

Latitude 39 05

Longitude 80 40

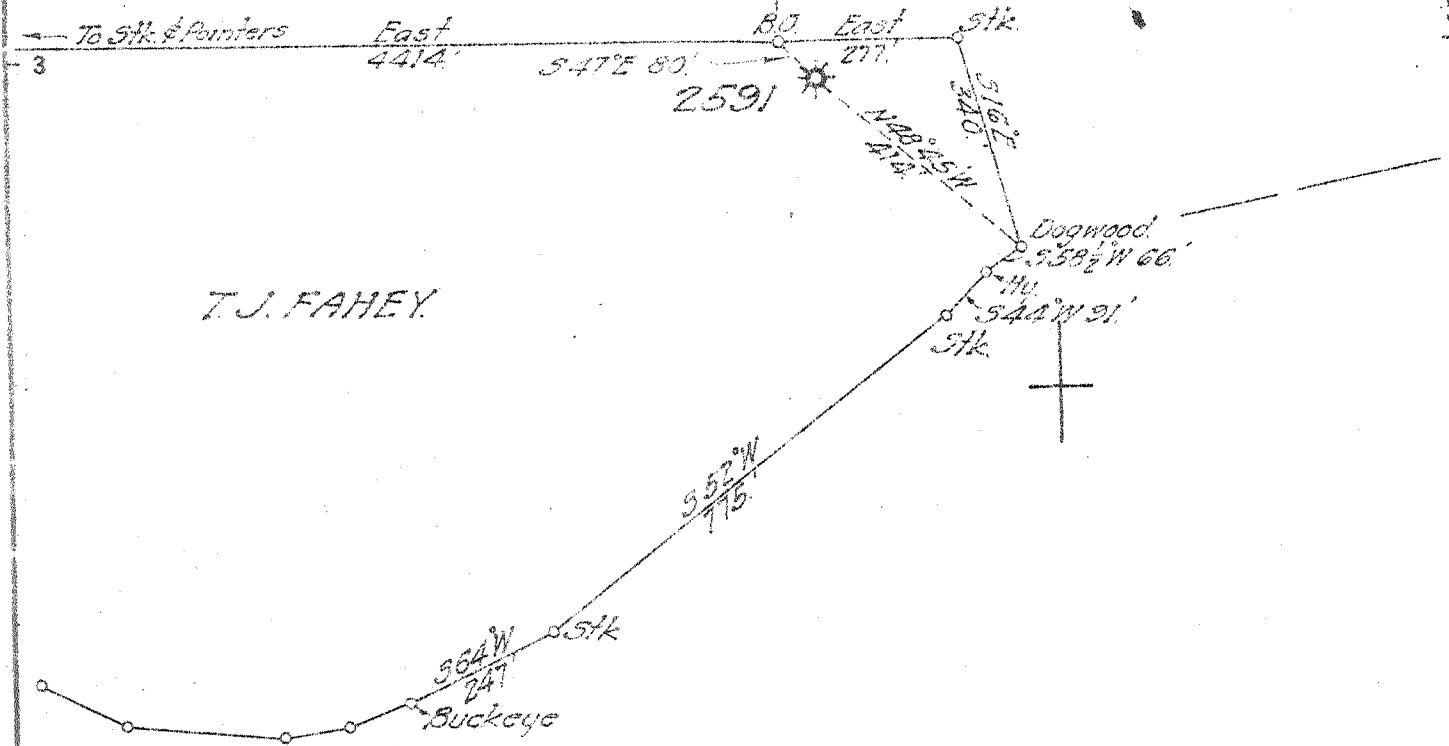
4.00  
2.15 W

Jos. Steinbeck

J.F. Stockert

T.J. FAHEY

James H. Bailey, Jr.



New Location   
 Drill Deeper   
 Abandonment

Company UNITED FUEL GAS CO.  
 Address CHARLESTON W.VA.  
 Farm T.J. FAHEY  
 Tract \_\_\_\_\_ Acres 29 Lease No. 22743  
 Well (Farm) No. 1 Serial No. 2591  
 Elevation (Spot Level) 900 BAR.  
 Quadrangle VADIS  
 County LEWIS District FREEMAN'S CREEK  
 Engineer M.A. Cunningham  
 Engineer's Registration No. 659  
 File No. 110-105 Drawing No. \_\_\_\_\_  
 Date SEPT. 13 1944 Scale 1" = 500'

STATE OF WEST VIRGINIA  
 DEPARTMENT OF MINES  
 OIL AND GAS DIVISION  
 CHARLESTON

WELL LOCATION MAP  
 FILE NO. LEW-267-A

+ Denotes location of well on United States Topographic Maps, scale 1 to 62,500, latitude and longitude lines being represented by border lines as shown.

- Denotes one inch spaces on border line of original tracing



STATE OF WEST VIRGINIA  
DEPARTMENT OF MINES  
OIL AND GAS DIVISION

WELL RECORD



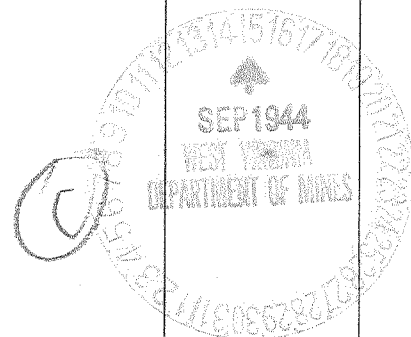
Permit No. 267-A OH or Gas Well GAS  
(KIND)

Company United Fuel Gas Company  
Address Box 1273, Charleston 25, W. Va.  
Farm T. J. Fahey Acres 99  
Location (waters) Leading Creek  
Well No. 2591 Elev. 900  
District Freemans Creek County Lewis  
The surface of tract is owned in fee by T. J. Fahey  
Address \_\_\_\_\_  
Mineral rights are owned by \_\_\_\_\_  
Address \_\_\_\_\_  
Drilling commenced March 24, 1926  
Drilling completed May 16, 1926  
Date Shot No record From \_\_\_\_\_ To \_\_\_\_\_  
With \_\_\_\_\_  
Open Flow \_\_\_\_\_ /10ths Water in \_\_\_\_\_ Inch  
\_\_\_\_\_ /10ths Merc. in \_\_\_\_\_ Inch  
Volume Gas Well \_\_\_\_\_ Cu. Ft.  
Rock Pressure \_\_\_\_\_ lbs. \_\_\_\_\_ hrs.  
Oil \_\_\_\_\_ bbls., 1st 24 hrs.  
Fresh water 60 feet \_\_\_\_\_ feet  
Salt water \_\_\_\_\_ feet \_\_\_\_\_ feet

Casing and Tubing	Used in Drilling	Left in Well	Packers
Size			
16			Kind of Packer
13			
10	181	181	Size of
8 1/4	854	854	
6 5/8	1540	1214	Depth set
5 3/16			
3			Perf. top
2			Perf. bottom
Liners Used			Perf. top
			Perf. bottom

CASING CEMENTED \_\_\_\_\_ SIZE \_\_\_\_\_ No. Ft. \_\_\_\_\_ Date \_\_\_\_\_  
COAL WAS ENCOUNTERED AT \_\_\_\_\_ FEET \_\_\_\_\_ INCHES  
\_\_\_\_\_ FEET \_\_\_\_\_ INCHES \_\_\_\_\_ FEET \_\_\_\_\_ INCHES  
\_\_\_\_\_ FEET \_\_\_\_\_ INCHES \_\_\_\_\_ FEET \_\_\_\_\_ INCHES

Formation	Color	Hard or Soft	Top	Bottom	Oil, Gas or Water	Depth Found	Remarks
Loam & Clay			1	14			
Gray Lime			14	25			
Slate			25	55			
Gray Lime			55	80	Water	60'	10 bailers per hour
Red Rock			80	120			
Gray Lime			120	150			
Red Rock			150	165			
Gray Lime			165	220			
Red Rock			220	240			
Black Lime			240	260			
Red Rock			260	270			
Gray Lime			270	290			
Red Rock			290	360			
White Lime			360	410			
White Slate			410	415			
Gray Lime			415	460			
Little Dunkard Sand			460	565			
Gray Lime			565	660			
Slate			660	785			
First Salt Sand			785	935	Gas	915	Show
Slate			935	1110			
Second Salt Sand			1110	1320	Gas	1150	Show
Slate			1320	1342			
Third Salt Sand			1342	1395			
Red Rock			1395	1461			
Slate & Shells			1461	1490			
Little Lime			1490	1510			
Pencil Cave			1510	1517			
Gritty Lime			1517	1537			
Big Lime			1537	1596			
Big Injun			1596	1704	Gas	1683	
Black Slate			1704	1745			
Squaw Sand			1745	1888			
Slate & Shells			1888	2160			
Gritty Lime			2160	2172			
Slate & Shells			2172	2198			
Gordon Stray			2198	2206			
Red Rock			2206	2216			



Formation	Color	Hard or Soft	Top	Bottom	Oil, Gas or Water	Depth Found	Remarks
Slate			2216	2290			
Fourth Sand			2290	2298			
Slate			2298	2371			
Fifth (Gritty Lime)			2371	2379			
Slate & Shells			2379	2520			
Total Depth				2520			

Date September 11, 194 4

APPROVED UNITED FUEL GAS COMPANY, Owner

By G. A. Cunningham  
(Title)