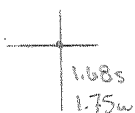


Latitude

Longitude



**Topo Location**

7.5' Loc. \_\_\_\_\_ 15' Loc. \_\_\_\_\_  
 \_\_\_\_\_ (calc.) \_\_\_\_\_

Company \_\_\_\_\_

Farm \_\_\_\_\_

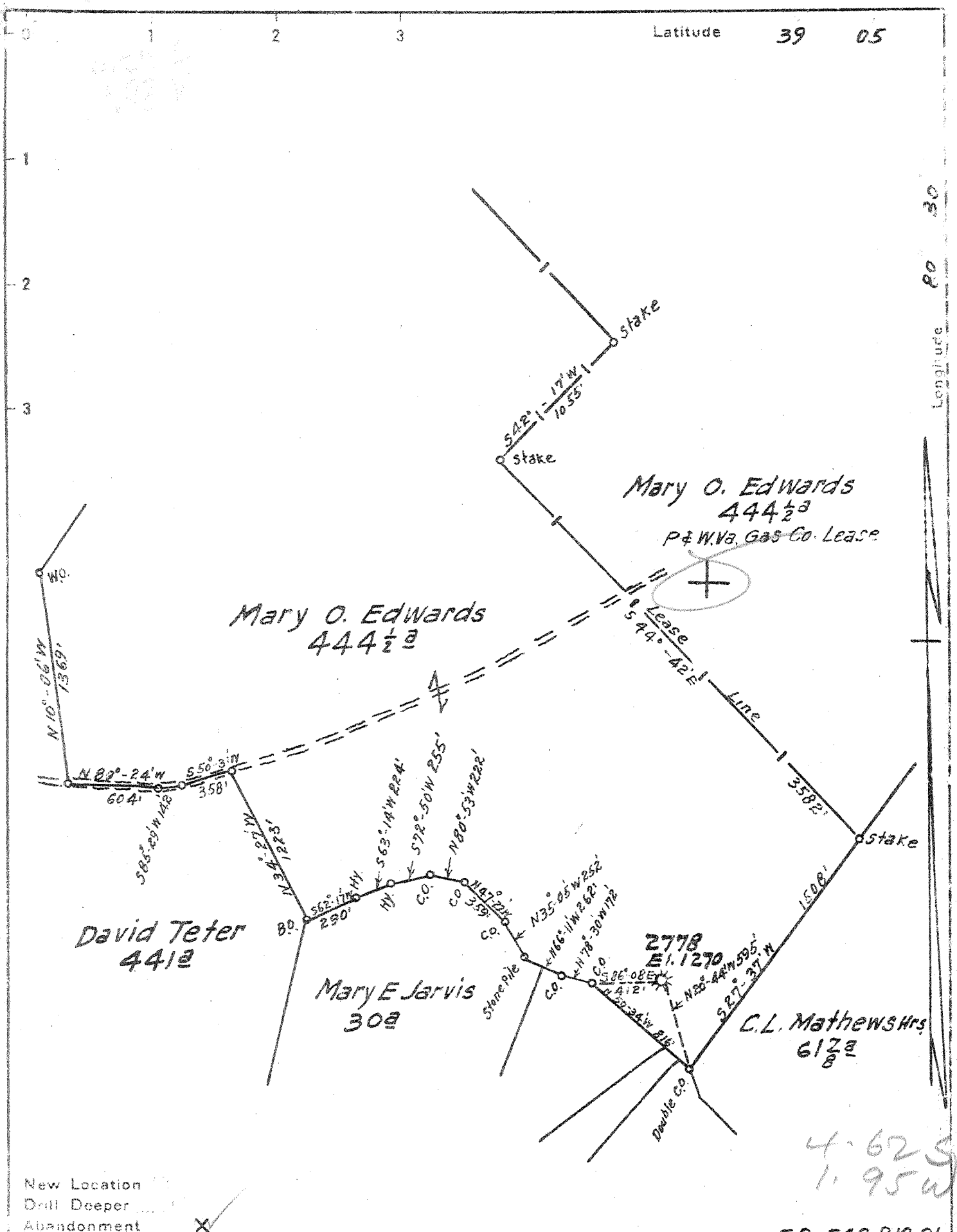
15' Quad \_\_\_\_\_  
(sec.)

7.5' Quad Camden \_\_\_\_\_

District Count House \_\_\_\_\_

**WELL LOCATION PLAT**

County 041 Permit 30231



FB 549 P19-21

Company Hope Natural Gas Co  
 Address Clarksburg, W.Va.  
 Farm Mary O. Edwards  
 Tract \_\_\_\_\_ Acres 444 1/2 Lease No. 5188  
 Well (Farm) No. 2 Serial No. 2778  
 Elevation (Spirit Level) 1270  
 Quadrangle Vadis  
 County Lewis District COURT HOUSE  
 Engineer W M Bowers  
 Engineer's Registration No. 900  
 File No. \_\_\_\_\_ Drawing No. \_\_\_\_\_  
 Date April 27, 1942 Scale 1" = 800'

STATE OF WEST VIRGINIA  
 DEPARTMENT OF MINES  
 OIL AND GAS DIVISION  
 CHARLESTON

WELL LOCATION MAP  
 FILE NO. LEW-231-A

+ Denotes location of well on United States Topographic Maps, scale 1 to 62,500, latitude and longitude lines being represented by border lines as shown  
 - Denotes one inch spaces on border line of original tracing.

STATE OF WEST VIRGINIA  
DEPARTMENT OF MINES  
OIL AND GAS DIVISION

314

WELL RECORD

Permit No. 231-A

Oil or Gas Well (KIND) *OG*

Company Hope Natural Gas Company.  
Address 445 West Main St. Clarksburg, W. Va.  
Farm M.O. Edwards Acres 444 1/2  
Location (waters) 2778  
Well No. 2778 Elev. 1270  
District Courthouse County Lewis  
The surface of tract is owned in fee by

Mineral rights are owned by  
Address  
Drilling commenced Feb. 13, 1913  
Drilling completed Apr. 11, 1913  
Date Shot 4012-13 From 2814 To 2824  
With 30qts

Open Flow /10ths Water in Inch  
/10ths Merc. in Inch  
Volume Cu. Ft.  
Rock Pressure lbs. hrs.  
Oil bbls., 1st 24 hrs.  
Fresh water None recorded feet  
Salt water None recorded feet

Casing and Tubing	Used in Drilling	Left in Well	Packers
Size			Kind of Packer
16.			
13.			
10.	180	59	Size of
8 1/4.	990	Pulled	
6 5/8.	2009	2009	Depth set
5 3/16.	2602	Pulled	
3.			Perf. top
2.	2888	Pulled	Perf. bottom
Liners Used			Perf. top
			Perf. bottom

Not cemented  
CASING CEMENTED SIZE No. Ft. Date  
COAL WAS ENCOUNTERED AT 340 FEET 60 INCHES  
FEET INCHES FEET INCHES  
FEET INCHES FEET INCHES

Formation	Color	Hard or Soft	Top	Bottom	Oil, Gas or Water	Depth Found	Remarks
Pittsburgh Coal			340	345			
Little Dunkard			590	620			
Big Dunkard			840	872			
Gas sand			885	1175			
First Salt sand			1240	1340			
Second Salt sand			1380	1570			
Maxon sand			1610	1630			
Little Lime			1870	1920			
Pencil cave			1920	1934			
Big Lime			1934	2009			
Big Injun sand			2009	2165	show gas	2140	
Gantz sand			2295	2315			
Gordon Stray			2587	2605			
Gordon sand			2610	2677	gas	2612	
Fourth sand			2717	2725			
Fifth sand			2812	2824	gas	2816	
		Total depth		2874			

