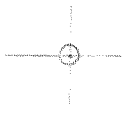


LATITUDE 39° 07' 30"

LONGITUDE 90° 22' 08"



7.5 OGIS topo location

7.5' loc 2155 15' loc _____
 1.98w (calc.) _____

Company _____

Farm _____

Quad WESTON 7 1/2'

County LEWIS

District HACKERS CREEK

WELL LOCATION MAP

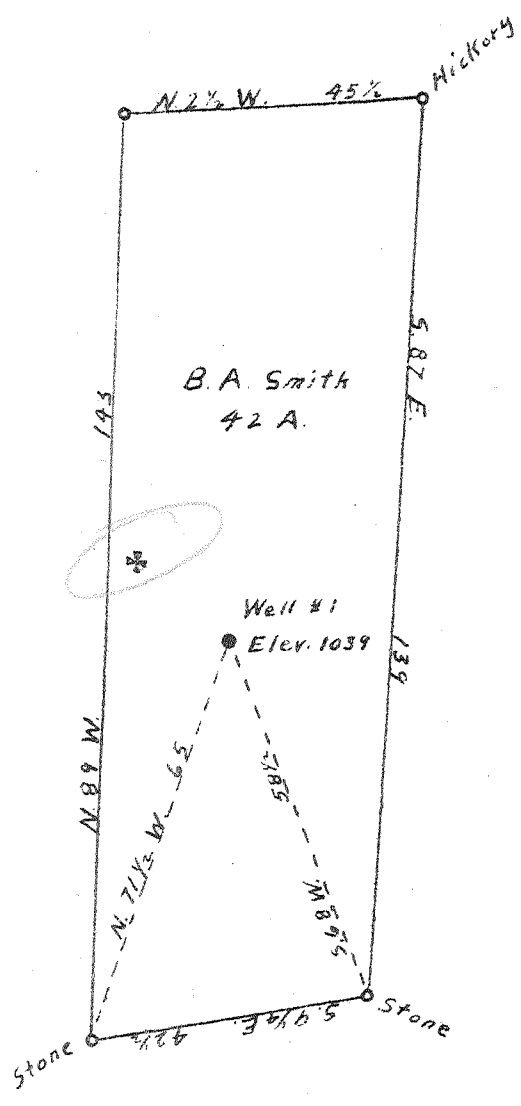
File No. 041-230A

5,153
4683 W

Longitude 81 20'



W.E.M. Whorter



B.A. Smith

Sam'l Alkire

R.R. Price

New Location...

Drill Deeper...

Abandonment...

5,209
4,38 W

Company Standard Gas Co.

Address Jane Lew, W. Va.

Farm B. A. Smith

Tract _____ Acres 42 Lease No. _____

Well (Farm) No. One Serial No. _____

Elevation (Spirit Level) 1039

Quadrangle Western

County Lewis District Hacketts Creek

Engineer A.K. Westfall

Engineer's Registration No. Co. Surveyor, Ritchie, Co.

File No. _____ Drawing No. _____

Date April 15, 1892 Scale 1" = 30 Feet

STATE OF WEST VIRGINIA
DEPARTMENT OF MINES
OIL AND GAS DIVISION
CHARLESTON

WELL LOCATION MAP
FILE NO. LEW-230-A

+ Denotes location of well on United States Topographic Maps, scale 1 to 62,500, latitude and longitude lines being represented by border lines as shown.

- Denotes one inch spaces on border line of original tracing.