

Latitude

+.275  
|.93w

Longitude

Topo Location

7.5' Loc. \_\_\_\_\_ 15' Loc. \_\_\_\_\_  
\_\_\_\_\_ (calc.) \_\_\_\_\_

Company \_\_\_\_\_

Farm \_\_\_\_\_

15' Quad \_\_\_\_\_  
(sec.)

7.5' Quad Weston

District Freemans Creek

WELL LOCATION PLAT

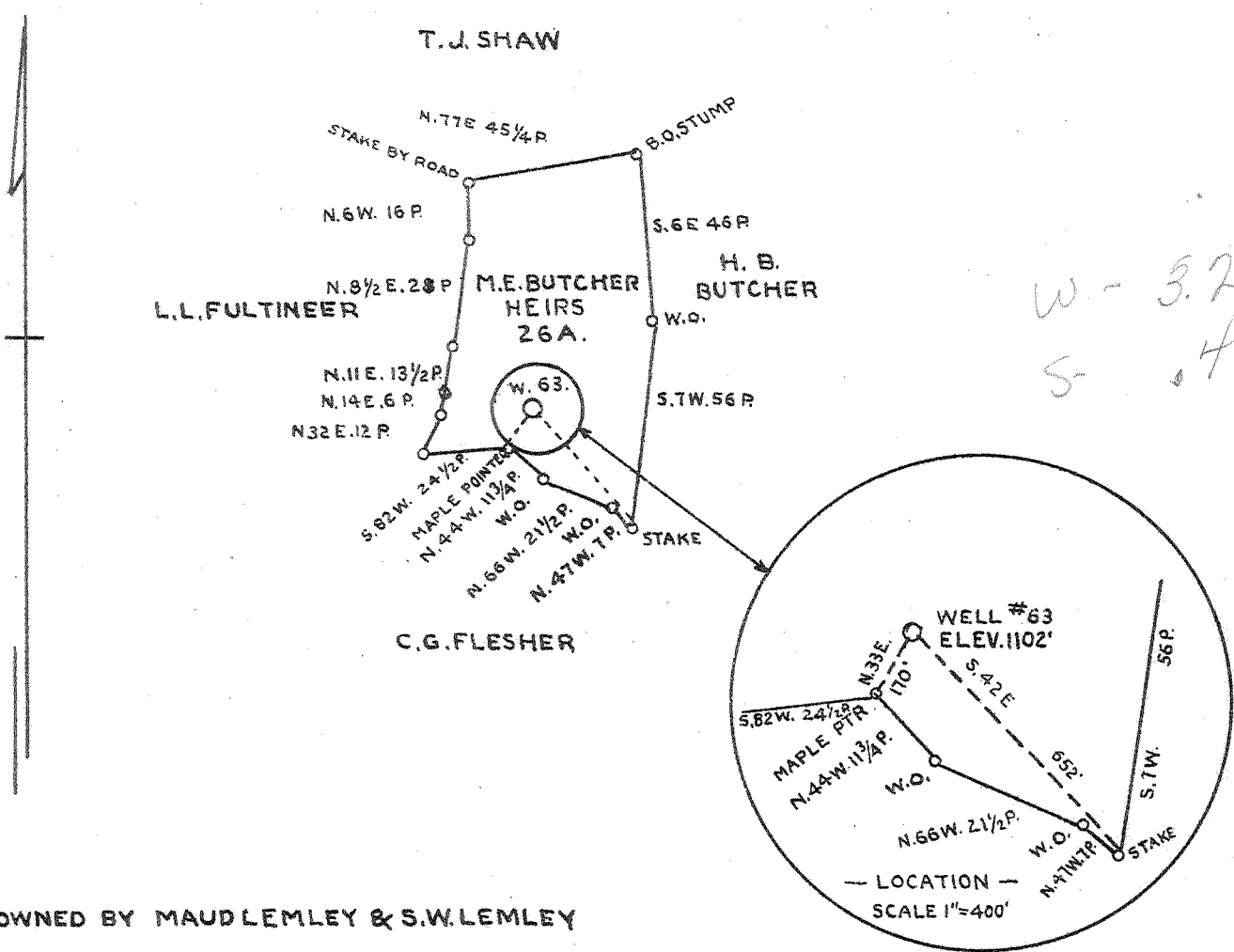
County 041 Permit 30206

Latitude 39° 05' Longitude 80° 25'

0 1 2 3

1 2 3

40  
315



W-3.2  
S-4

COAL OWNED BY MAUD LEMLEY & S.W. LEMLEY

- New Location...
- Drill Deeper.....
- Abandonment.....

Company **CUMBERLAND AND ALLEGHENY GAS CO.**  
 Address **800 UNION TRUST BLDG. PITTSBURGH PA.**  
 Farm **M.E. BUTCHER HEIRS (NOW S.W. LEMLEY ET. UX)**  
 Tract \_\_\_\_\_ Acres **26** Lease No. **259**  
 Well (Farm) No. \_\_\_\_\_ Serial No. **63**  
 Elevation (Spirit Level) **1102'**  
 Quadrangle **WESTON S.W. 1/4**  
 County **LEWIS** District **FREEMANS CREEK**  
 Engineer *J. L. M. [Signature]*  
 Engineer's Registration No. \_\_\_\_\_  
 File No. \_\_\_\_\_ Drawing No. **Y-10-57**  
 Date **APRIL 2-1941** Scale **1"=800'**

**STATE OF WEST VIRGINIA**  
 DEPARTMENT OF MINES  
 OIL AND GAS DIVISION  
 CHARLESTON

**WELL LOCATION MAP**  
 File No. **LEW-206A**

+ Denotes location of well on United States Topographic Maps, scale 1 to 62,500, latitude and longitude lines being represented by border lines as shown.  
 --- Denotes one inch spaces on border line of original tracing.

294

WEST VIRGINIA DEPARTMENT OF MINES  
OIL AND GAS DIVISION

WELL RECORD

Ab 206-A

Drilled in 1912

Permit No. \_\_\_\_\_ Oil or Gas Well Gas  
(Kind) \_\_\_\_\_

Cumberland and Allegheny Gas Co.

Company ~~Shamrock Manufacturing Co.~~  
Address 800 Union Trust Bldg., Pittsburgh, Pa.  
Farm M. E. Butcher Acres 46  
Location (waters) \_\_\_\_\_  
Well No. 1-63 Elev. 1102 ft.  
District Freemans Creek County Lewis  
The surface of tract is owned in fee by S W Lemley  
Address Weston, W. Va.  
Mineral rights are owned by Cumberland and Allegheny  
Gas Company Address Pittsburgh, Pa.  
Drilling commenced April 16, 1912  
Drilling completed May 29, 1912  
Date shot May 31, 1912 Depth of shot 2080 ft.

Casing and Tubing	Used in Drilling	Left in Well	Packers
Size			
16			Kind of Packer
13			Callanan
10	545	-	Size of
8 1/4	1013	-	6 5/8 x 3"
6 5/8	1375	1375	Depth set
5 3/16			1942 ft.
3			Perf. top
2			Perf. bottom
Liners Used			Perf. top
			Perf. bottom

Open Flow /10ths Water in \_\_\_\_\_ Inch  
/10ths Merc. in \_\_\_\_\_ Inch  
Volume \_\_\_\_\_ Cu. Ft.  
Rock Pressure \_\_\_\_\_ lbs. \_\_\_\_\_ hrs.  
Oil \_\_\_\_\_ bbls., 1st 24 hrs.  
Fresh water \_\_\_\_\_ feet \_\_\_\_\_ feet  
Salt water \_\_\_\_\_ feet \_\_\_\_\_ feet

CASING CEMENTED \_\_\_\_\_ SIZE \_\_\_\_\_ No. FT. \_\_\_\_\_ Date \_\_\_\_\_  
COAL WAS ENCOUNTERED AT 430 FEET 60 INCHES  
FEET \_\_\_\_\_ INCHES FEET \_\_\_\_\_ INCHES  
FEET \_\_\_\_\_ INCHES FEET \_\_\_\_\_ INCHES

Formation	Color	Hard or Soft	Top	Bottom	Oil Gas or Water	Depth Found	Remarks
Slate, Shells & Rocks			0	280			
Little Dunkard			280	315			
Coal			430	435	Good		
Big Dunkard			460	515	Water at 500		
Gas Sand			600	650			
1st Salt Sand			710	775			
2nd Salt Sand			815	885			
Shells			1215	1218	No Maxon Sand found		
Little Lime			1218	1235			
Big Lime			1235	1278	No break between Little & Big Lime		
Big Injun			1278	1399			
Gantz			1678	1705	Small gas at 1688		
Shells			1705	1805	No Pencil Cave		
30-Foot Sand			1805	1830			
Gordon Stray			1875	1910			
Gordon			1930	1955			
Fifth Sand			2077	2096			
Total depth				2118			Hole filled up to 2118 ft. 5th Sand good. Gas from 2080 to 2095

