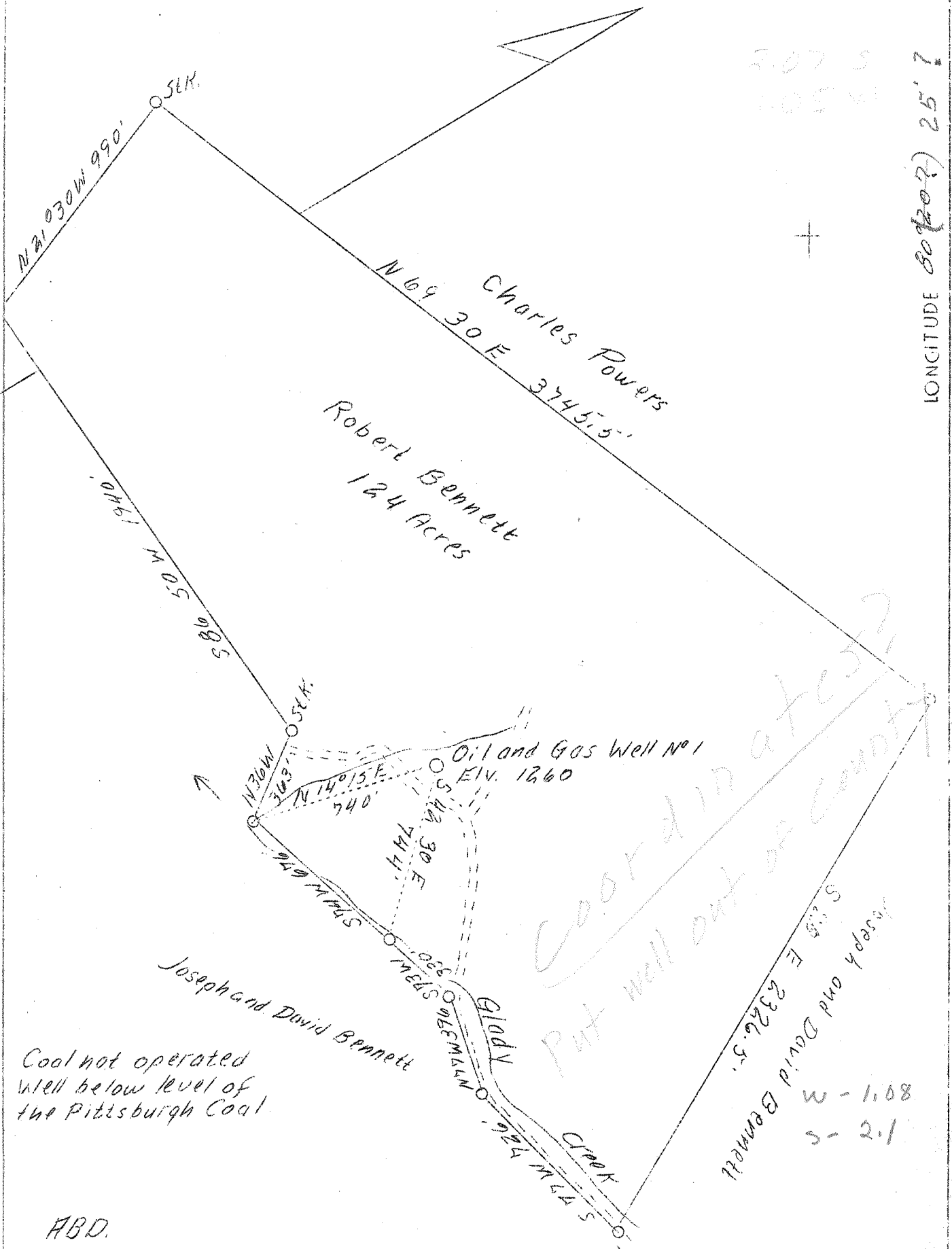


LATITUDE 38°50'

LONGITUDE 80°20' 25" ?



307 S
305 W

Charles Powers
N 69° 30' E 3745.5'
Robert Bennett
124 Acres

Oil and Gas Well No 1
Elev. 1260

*Coordinate at 527
Put well out of Bennett*

Cool not operated
Well below level of
the Pittsburgh Coal.

Joseph and David Bennett

Joseph and David Bennett
S 23° E 2326.5'
80 1/2 - W
5 - 2.1

ABD.

Company	William Moses
Address	Salem, W. Va.
Farm	Robert Bennett
Acres	124
Well (Farm) No.	1
Elevation (SL)	1260
Quadrangle	Crawford S.
County	Lewis
District	Collins Settlement
Engineer	C. C. Fittro, C. E.
Eng. Reg. No.	818
File No.	XZ
Drawing No.	131
Date	Sept. 16, 1939
Scale	50' - 1"

STATE OF WEST VIRGINIA
Department of Mines
OIL & GAS DIVISION
Charleston

WELL LOCATION MAP

File No. Lew-180 A

x Denotes location of well on U. S. Topographic Maps, scale 1 to 62,500, latitude and longitude lines being represented by border lines as shown.

- Denotes one inch spaces on border line of original tracing.

STATE OF WEST VIRGINIA
DEPARTMENT OF MINES
OIL AND GAS DIVISION

271

WELL RECORD

Ab
Permit No. 180-A

Oil or Gas Well
(Kind)

Company William Moses
Address 97 W. High Street, Salem, W. Va.
Farm Robert Bennett Acres 124
Location (waters) Gladys Fork Creek
Well No. 1 Elev. 1960'
District Collins Settler County Lewis
The surface of tract is owned in fee by Robert Bennett
Address Lewis County,

Casing and Tubing	Used in Drilling	Left in Well	Packers
Size			Kind of Packer
16			
13			
10			Size of
8 1/4		160'	
6 5/8		1320'	Depth set
5 3/16		1465'	
3			Perf. top
2			Perf. bottom
Liners Used			Perf. top
			Perf. bottom

Mineral rights are owned by Robert Bennett
Address Lewis County
Drilling commenced
Drilling completed
Date shot Depth of shot
Open Flow /10ths Water in Inch
/10ths Merc. in Inch
Volume Cu. Ft.
Rock Pressure lbs hrs.
Oil bbls., 1st 24 hrs.
Fresh water feet feet
Salt water feet feet

CASING CEMENTED SIZE No. Ft. Date
COAL WAS ENCOUNTERED AT No Coal FEET INCHES
FEET INCHES FEET INCHES
FEET No Coal INCHES FEET INCHES

Formation	Color	Hard or Soft	Top	Bottom	Oil, Gas or Water	Depth Found	Remarks
Big Dunkard			80	160			
Little Lime			1320	1340			
Blue Monday			1345	1405			
Big Lime			1405	1465			
Big Injun			1465	1585			
Gantz Sand			1720	1732			
Total Depth	1752						