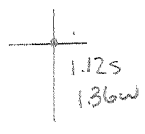


39°07'30"

Latitude

80°30'00"



Longitude

Topo Location

7.5' Loc. _____ 15' Loc. _____
 _____ (calc.) _____

Company _____

Farm _____

15' Quad _____
(sec.)

7.5' Quad Carndern

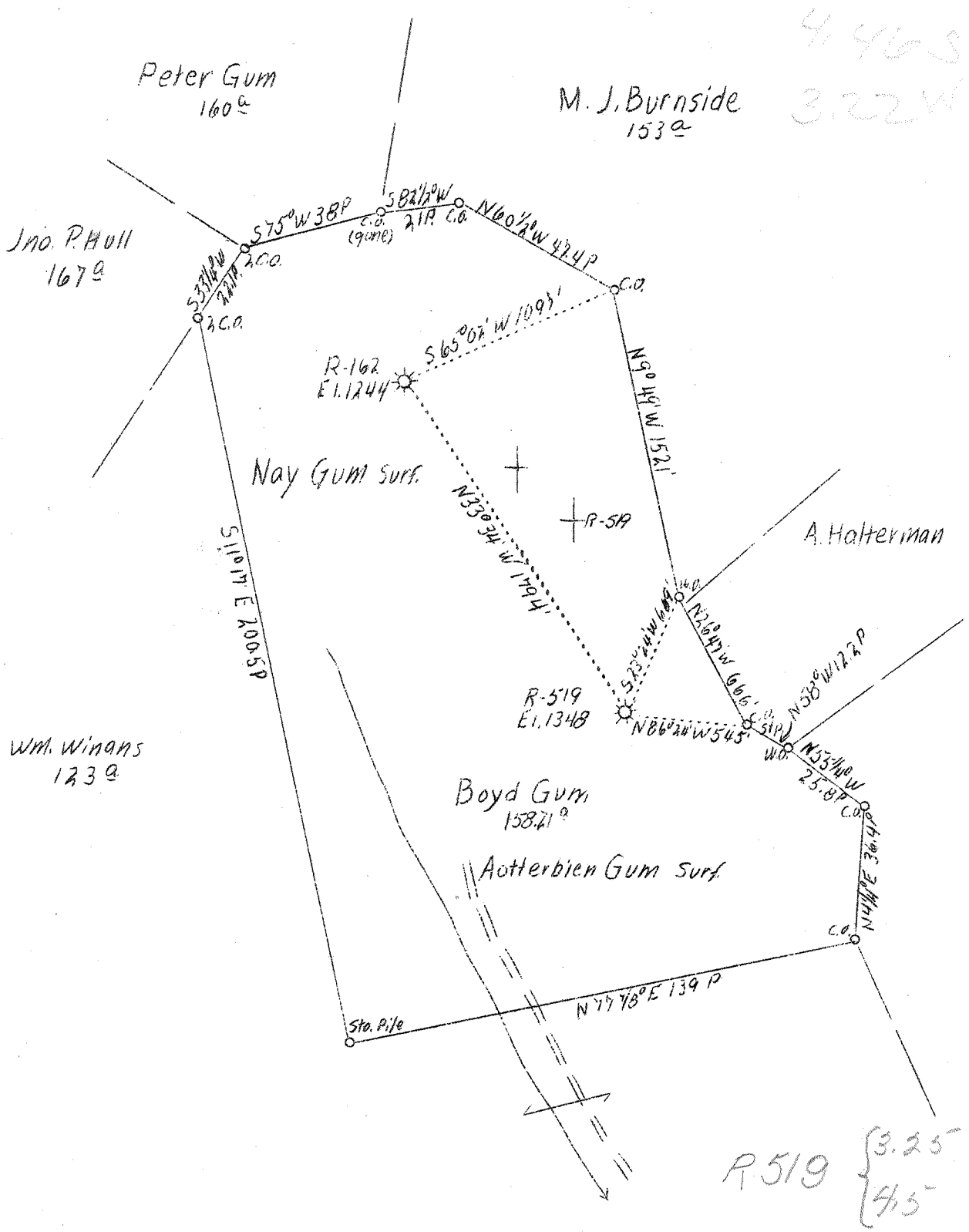
District Freemans Creek

WELL LOCATION PLAT

County 041 Permit 30167

LATITUDE 39° 10'

LONGITUDE 80° 30'



ABD-R-519

FB. 670 PB 574 E 3 Sh 69

Company	Reserve Gas Co.
Address	Clarksburg, W. Va.
Farm	Boyd Gum
Acres	160
Lease No.	606
Well (Farm) No.	1-2
Serial No.	162 - 519
Elevation	See Plat
Quadrangle	Vadis
County	Lewis
District	Freemans Creek
Engineer	W. M. Bowers
Eng. Reg. No.	900
Date	Feb. 6, 1939
Scale	1" - 40 poles

STATE OF WEST VIRGINIA
 Department of Mines
 OIL & GAS DIVISION
 Charleston

WELL LOCATION MAP

File No. LEW-167-A

x Denotes location of well on U. S. Topographic Maps, scale 1 to 62,500, latitude and longitude lines being represented by border lines as shown.

- Denotes one inch spaces on border line of original tracing.

WEST VIRGINIA DEPARTMENT OF MINES
OIL AND GAS DIVISION

WELL RECORD

257

AP 167-A

Permit No.

Oil or Gas Well 519
(Kind)

Company Reserve Gas Company
 Address 445 West Main St. Clarksburg, W. Va.
 Farm Boyd Gum Acres 160
 Location (waters) Limestone Lick
 Well No. 519 Elev. 1348
 District Freemas Creek County Lewis
 The surface of tract is owned in fee by.....
 Address.....
 Mineral rights are owned by.....
 Address.....
 Drilling commenced Oct. 29, 1914
 Drilling completed Dec. 24, 1914
 Date shot Jan. 1939 Depth of shot.....
 Open Flow /10ths Water in..... Inch
 /10ths Merc. in..... Inch
 Volume..... Cu. Ft.
 Rock Pressure..... lbs. hrs.
 Oil..... bbls., 1st 24 hrs.
 Fresh water None recorded feet..... feet
 Salt water None recorded feet..... feet

Casing and Tubing	Used in Drilling	Left in Well	Packers
Size			Kind of Packer.....
16.....			
13.....			
10.....	170	Pulled	Size of.....
8 1/4.....	1266	Pulled	
6 5/8.....	1987	1987	Depth set.....
5 3/16.....	2488	2488	
3.....			Perf. top.....
2.....	2790	Pulled	Perf. bottom.....
Liners Used.....			Perf. top.....
			Perf. bottom.....

Not cemented
 CASING CEMENTED..... SIZE..... No. FT..... Date.....
 COAL WAS ENCOUNTERED AT..... 60 FEET..... 24" INCHES
 376 FEET..... 60" INCHES..... FEET..... INCHES
 FEET..... INCHES..... FEET..... INCHES

Formation	Color	Hard or Soft	Top	Bottom	Oil Gas or Water	Depth Found	Remarks
Native Coal			60	62			
Pittsburgh Coal			376	381			
Little Dunkard			840	870			
Big Dunkard			895	970			
Gas Sand			1010	1035			
First Salt			1100	1290			
Second Salt			1310	1500			
Maxon Sand			1580	1625	Gas	1600	
Little Line			1805	1820			
Pencil Cave			1820	1850			
Big Line			1850	1920			
Big Injun			1920	2060			
Squaw			2065	2085			
Hantz			2190	2230			
Thirty Foot			2380	2420			
Gordon Stray			2480	2505			
Gordon			2507	2580	Gas	2514	
Fifth			2709	2729	Gas	2721	
Total Depth				2790			

