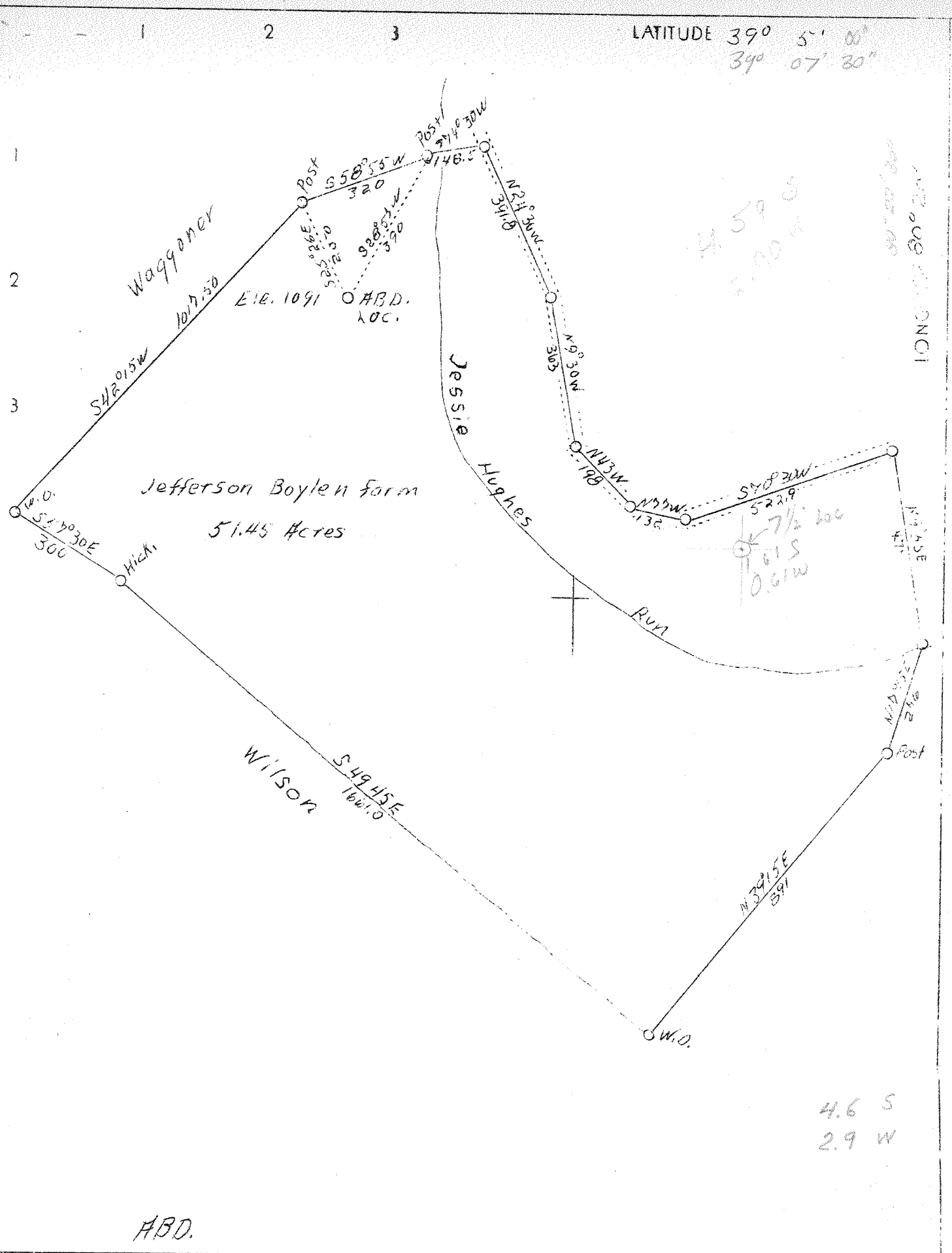


LATITUDE 39° 5' 00"  
39° 07' 30"



Company Standard Gas Co.  
 Address Jane Lew, W. Va.  
 Farm Jefferson Boylen  
 Acres 51.45  
 Well (Farm) No. 1  
 Elevation "Y" Level  
 Quadrangle Weston, S.C. WESTON 7 1/2'  
 County Lewis  
 District Hackers Creek  
 Engineer Britt Engineering Co.  
 Eng. Reg. No. 833  
 Date May 25, 1938  
 Scale 300' = 1"

STATE OF WEST VIRGINIA  
 Department of Mines  
 OIL & GAS DIVISION  
 Charleston

WELL LOCATION MAP

File No. Lew-144-A

X Denotes location of well on U. S. Topographic Maps, scale 1 to 62,500, latitude and longitude lines being represented by border lines as shown.

- Denotes one inch spaces on border line of original tracing.

144A

Hackers Creek District, Lewis County, W. Va.  
 By Standard Gas Co., Jane Lew, W. Va.  
 On  $51\frac{3}{4}$  acres.

Elevation.....

Surface and minerals owned by Heirs of J. D. Boylen, Jane Lew, W. Va.  
 Date of completion, etc., unknown. Purchased well drilled by  
 Trippet Oil & Gas Co.

$6\frac{5}{8}$ " casing, 1400'.

Gas well. Abandonment reported to Dept. of Mines June 3, 1938.

Record to ROT from Mrs. Griffith August 12, 1938.

	Top.	Bottom.
Gas Sand (water at 495')	425	- 500
Salt Sand	600	- 800
Big Lime	1280	- 1360
Big Injun Sand (oil, 1365', 10 to 15 bbls.) (little gas, 1435')	1360	- 1480
Berea Sand	1640	- 1650
Gordon Stray Sand	2014	- 2028
Gordon Sand (gas, 2041', 2,000,000 cu. ft.; gas, 2056-2058-2069')	2038	- 2200
Benson Sand	4257	- 4267
Total depth		4287

WEST VIRGINIA DEPARTMENT OF MINES  
OIL AND GAS DIVISION

WELL RECORD

*(Handwritten initials)*

Permit No. ....

Oil or Gas Well Gas  
(Kind)

Company Standard Gas Company  
 Address Jane Lew, W. Va.  
 Farm J. D. Boylen Acres 51 3/4  
 Location (waters) Jefferson  
 Well No. One Elev. ....  
 District Hacker's Creek County Lewis  
 The surface of tract is owned in fee by Heirs of  
J. D. Boylen Address Jane Lew, W. Va.  
 Mineral rights are owned by Same  
 Address .....

Drilling commenced Date unknown. Purchased  
 Drilling completed well drilled by Trippet  
Oil & Gas Co.  
 Date shot ..... Depth of shot .....

Open Flow /10ths Water in ..... Inch  
 /10ths Merc. in ..... Inch

Volume ..... Cu. Ft.  
 Rock Pressure ..... lbs. .... hrs.  
 Oil ..... bbls., 1st 24 hrs.  
 Fresh water ..... feet ..... feet  
 Salt water ..... feet ..... feet

Casing and Tubing	Used in Drilling	Left in Well	Packers
Size			Kind of Packer
16			
13			
10			Size of
8 3/4			
6 5/8	1400 ft.	1400 ft.	Depth set
5 3/16			
3			Perf. top
2			Perf. bottom
Liners Used			Perf. top
			Perf. bottom

CASING CEMENTED ..... SIZE ..... No. FT. .... Date .....

COAL WAS ENCOUNTERED AT ..... FEET ..... INCHES  
 ..... FEET ..... INCHES ..... FEET ..... INCHES  
 ..... FEET ..... INCHES ..... FEET ..... INCHES

Formation	Color	Hard or Soft	Top	Bottom	Oil Gas or Water	Depth Found	Remarks
Gas sand			425	500	Water	495 ft.	
Salt Sand			600	800			
Big Lime			1280	1360			
Big Injun Sand					Oil	1365 ft.	10 to 15 bbls.
Sand			1360	1480	little gas	1435 ft.	
Merica Sand			1640	1650			
Gordon Stray			2014	2028			
Gordon Sand			2038	2200	Gas	2041'	2 million ft.
Senson Sand			4257	4267	Gas	2056-2058-2069	
<b>TOTAL DEPTH</b>				4287			

