

LATITUDE 39°07'30"

39°07'08"

LONGITUDE

7'5 OGIS topo location

7.5' loc 2825 15' loc _____
 0.11W (calc.) _____

Company _____

Farm _____

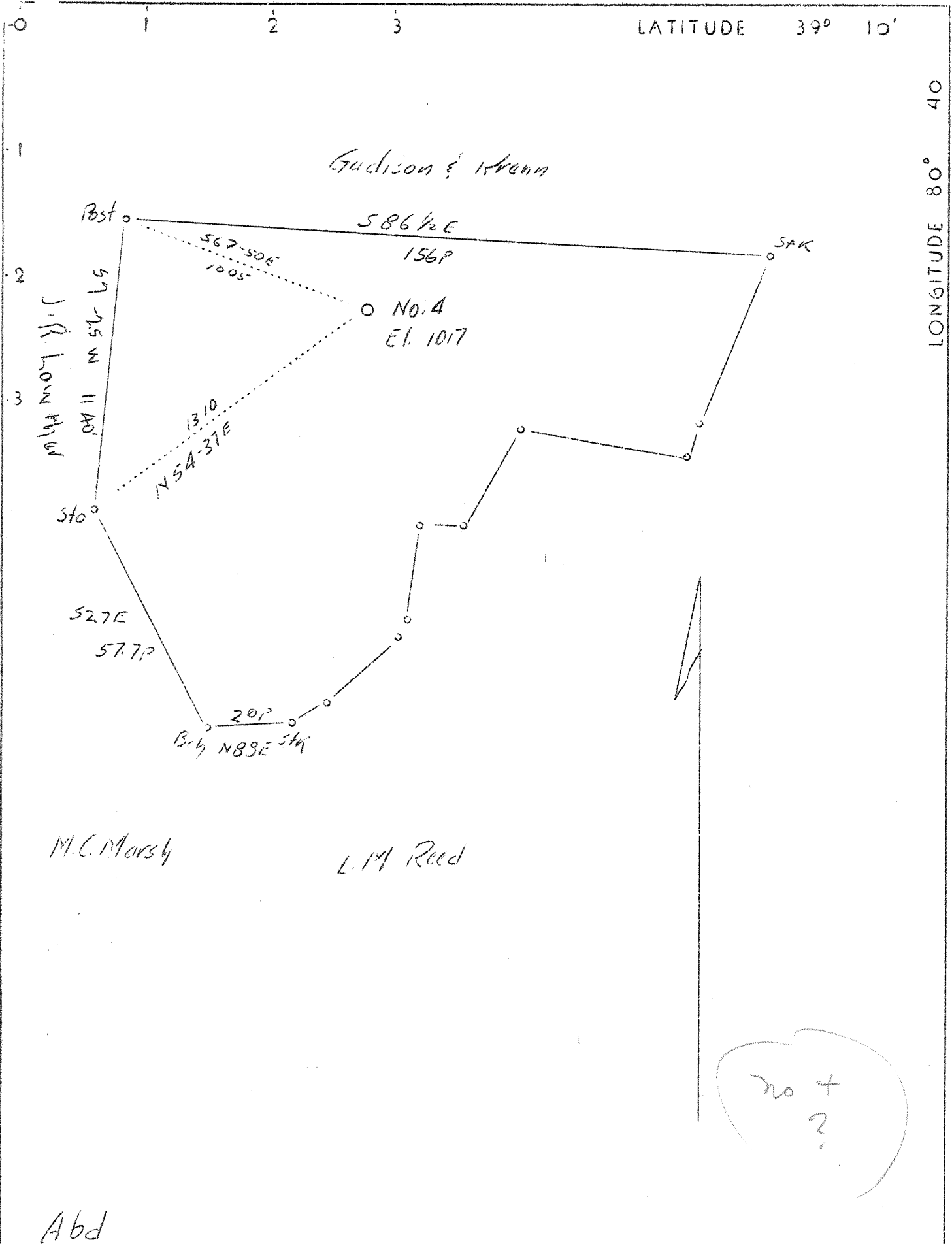
Quad VADIS

County LEWIS

District FREEMMS CREEK

WELL LOCATION MAP

File No. 041-127A



Abd

Company	Israel H. Beren
Address	Marietta, Ohio
Farm	L.M. Reed
Tract	Acres 73.1 Lease No.
Well (Farm) No.	4 Serial No.
Elevation (Spirit Level)	1017
Quadrangle	Vadis (Wb)
County	Lewis District Freemans Cr.
Engineer	C.C. Fittro, C.E.
Engineer's Registration No.	818
File No.	XYZ Drawing No. 92
Date	Oct. 26, 1937 Scale 1"-30 P.

STATE OF WEST VIRGINIA
 Department of Mines
 OIL AND GAS DIVISION
 CHARLESTON

WELL LOCATION MAP
 File No. LEV-127A

+ Denotes location of well on United States Topographic Maps, scale 1 to 62,500, latitude and longitude lines being represented by border lines of original tracing.

- Denotes one inch spaces on border line of original tracing.