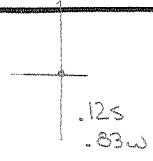


39°02'30"

Latitude



86°27'30"

Longitude

Topo Location

7.5' Loc. _____ 15' Loc. _____
 _____ (calc.) _____

Company _____

Farm _____

15' Quad _____
(sec.)

7.5' Quad Weston

District Court House

WELL LOCATION PLAT

County 041 Permit 30126

LATITUDE: 39° 02' 30"



03, 42, 08
LONGITUDE

7'5 OGIS topo location

7.5' LOC 0135 15' LOC _____
 133W (calc.) _____

Company _____

Farm _____

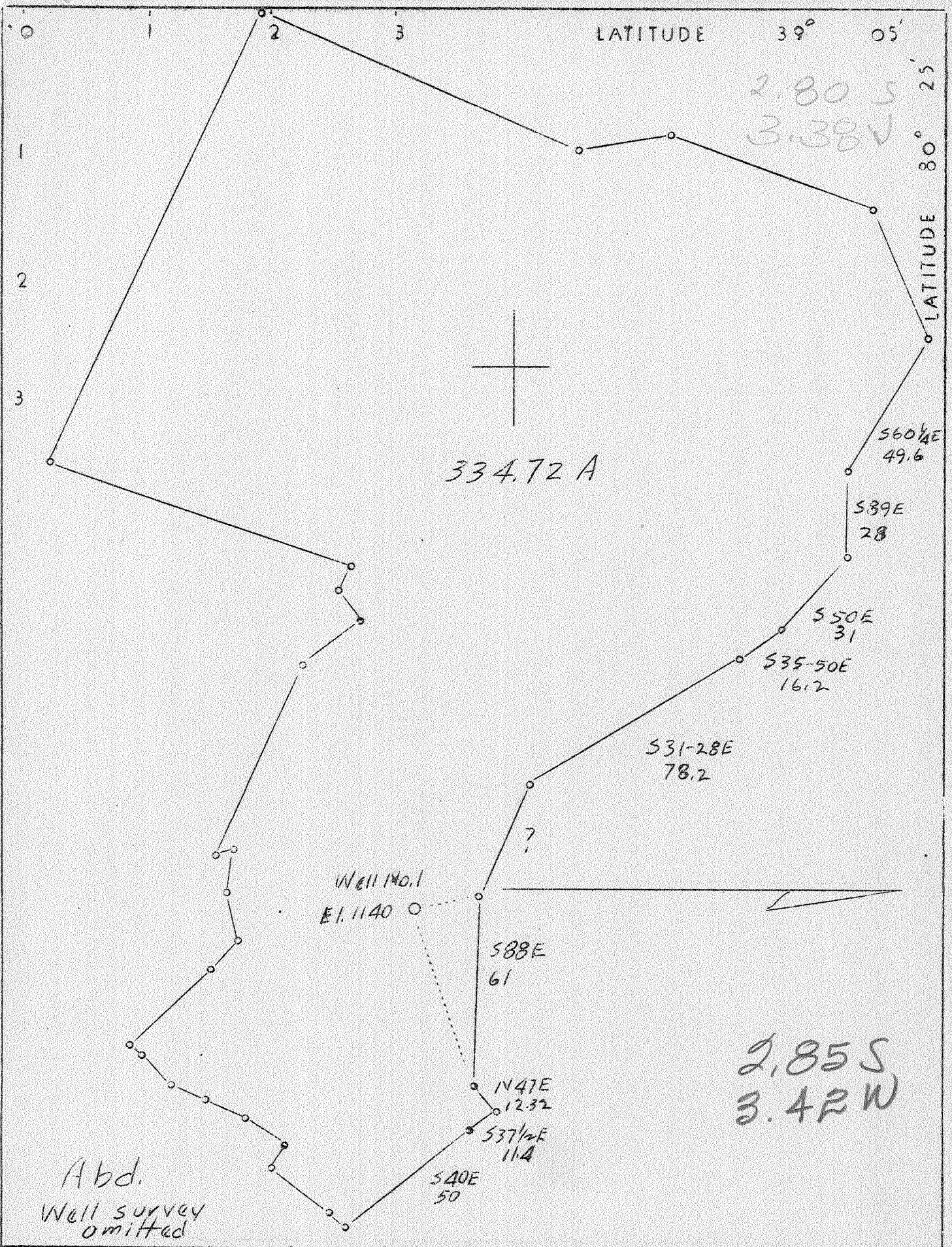
Quad WESTON 7 1/2'

County LEWIS

District COURT HOUSE

WELL LOCATION MAP

File No. 041-126A



Company	Weston State Hospital
Address	Weston, W.Va.
Farm	State
Tract	1 Acres 334.72 Lease No.
Well (Farm) No.	1 Serial No. 1
Quadrangle	Weston SW
County	Lewis
District	Court House
Engineer	M.L.B.Linger
Engineer's Registration No.	261
File No.	Drawing No.
Date	Scale 1"-40 P.

STATE OF WEST VIRGINIA
 Department of Mines
 OIL AND GAS DIVISION
 CHARLESTON

WELL LOCATION MAP
 File No. LEW-126A

+ Denotes location of well on United States Topographic Maps, scale 1 to 62,500, latitude and longitude lines being represented by border lines as shown.

— Denotes one inch spaces on border line of original tracing.