



west virginia department of environmental protection

Office of Oil and Gas
601 57th Street, S.E.
Charleston, WV 25304
(304) 926-0450
fax: (304) 926-0452

Harold D. Ward, Cabinet Secretary
www.dep.wv.gov

Monday, January 29, 2024
PERMIT MODIFICATION APPROVAL
Horizontal 6A / New Drill

HG ENERGY II APPALACHIA, LLC
5260 DUPONT ROAD

PARKERSBURG, WV 26101

Re: Permit Modification Approval for Winans 1216 S-8H
47-041-05752-00-00

Lateral Extension

HG ENERGY II APPALACHIA, LLC

The Office of Oil and Gas has reviewed the attached permit modification for the above referenced permit. The attached modification has been approved and well work may begin. Please be reminded that the oil and gas inspector is to be notified twenty-four (24) hours before permitted well work is commenced.

If there are any questions, please feel free to contact me at (304) 926- 0450.

A handwritten signature in blue ink, appearing to read 'James A. Martin', is written over a white rectangular area.

James A. Martin
Chief

Operator's Well Number: Winans 1216 S-8H
Farm Name: Stephen B Winans
U.S. WELL NUMBER: 47-041-05752-00-00
Horizontal 6A New Drill
Date Modification Issued: 01/29/2024

Promoting a healthy environment.

02/02/2024

STATE OF WEST VIRGINIA
DEPARTMENT OF ENVIRONMENTAL PROTECTION, OFFICE OF OIL AND GAS
WELL WORK PERMIT APPLICATION

1) Well Operator: HG Energy II Appalachia, LLC 494519932 Lewis Freeman Camden 7.5'
Operator ID County District Quadrangle

2) Operator's Well Number: Winans 1216 S-8H Well Pad Name: Winans 1216

3) Farm Name/Surface Owner: HG Energy II Appalachia, LLC Public Road Access: CR 10 @ Freemans Creek Road

4) Elevation, current ground: 1399' Elevation, proposed post-construction: 1394'

5) Well Type (a) Gas Oil _____ Underground Storage _____
Other _____

(b) If Gas Shallow Deep _____
Horizontal

6) Existing Pad: Yes or No No

7) Proposed Target Formation(s), Depth(s), Anticipated Thickness and Expected Pressure(s):
Marcellus at 7027/7100' and 73' in thickness. Anticipated pressure at 4314#.

8) Proposed Total Vertical Depth: 7,080'

9) Formation at Total Vertical Depth: Marcellus

10) Proposed Total Measured Depth: 32,725'

11) Proposed Horizontal Leg Length: 25,103'

12) Approximate Fresh Water Strata Depths: 214', 600', 861', 1306'

13) Method to Determine Fresh Water Depths: Nearest offset well data, (47-041-01754, 2174, 5732, 4411, 2629)

14) Approximate Saltwater Depths: 1605' (Vanek 1215)

15) Approximate Coal Seam Depths: 704', 865', 1214', 1285' (Surface casing is being extended to cover the coal in the DTI Field)

16) Approximate Depth to Possible Void (coal mine, karst, other): None

17) Does Proposed well location contain coal seams directly overlying or adjacent to an active mine? Yes _____ No

(a) If Yes, provide Mine Info: Name: _____
Depth: _____
Seam: _____
Owner: _____

RECEIVED
Office of Oil and Gas
JAN 24 2024
WV Department of
Environmental Protection

18) **CASING AND TUBING PROGRAM**

TYPE	Size (in)	New or Used	Grade	Weight per ft. (lb/ft)	FOOTAGE: For Drilling (ft)	INTERVALS: Left in Well (ft)	CEMENT: Fill-up (Cu. Ft.)/CTS
Conductor	30"	New	LS	157.5	120'	120' ✓	Drilled In
Fresh Water/Coal	20"	NEW	J-55	94	1360'	1360' ✓	40% Excess, CTS
Intermediate 1	13 3/8"	NEW	J-55 BTC	68	2480'	2480' ✓	40% Excess, CTS
Intermediate 2	9 5/8"	NEW	N-80 BTC	40	5975'	5975' ✓	40% Excess Tail, CTS
Production	5 1/2"	NEW	P-110 HP	23	32725'	32725' ✓	20% Excess Tail, CTS
Tubing							
Liners							

Kenneth Greynolds
Digitally signed by: Kenneth Greynolds
 DN: CN = Kenneth Greynolds email = Kenneth.L.Greynolds@wv.gov C = AD O = WVDEP OU = Oil and Gas
 Date: 2024.01.19 09:40:02 -0500

TYPE	Size (in)	Wellbore Diameter (in)	Wall Thickness (in)	Burst Pressure (psi)	Anticipated Max. Internal Pressure (psi)	Cement Type	Cement Yield (cu. ft./k)
Conductor	30"	30"	.500				Drilled In
Fresh Water/Coal	20"	26"	.438	2110	1200	Type 1, Class A ✓	40 % excess yield = 1.20, CTS
Intermediate 1	13 3/8"	17 1/2"	.480	3450		Type 1/Class A	Lead 40% excess, Tail 0% excess
Intermediate 2	9 5/8"	12 1/4"	.395	5750		Type 1/Class A	Lead 40% excess, Tail 0% Excess
Production	5 1/2"	8 1/2"	.415	16240 ✓	12500	Type 1/Class A	20% excess yield = 1.19, tail yield 1.24
Tubing							
Liners							

PACKERS

Kind:				RECEIVED Office of Oil and Gas
Sizes:				JAN 24 2024
Depths Set:				WV Department of Environmental Protection

WW-6B
(10/14)

API NO. 47- _____
OPERATOR WELL NO. Winans 1216 S-8H
Well Pad Name: Winans 1216

19) Describe proposed well work, including the drilling and plugging back of any pilot hole:

Drill the vertical depth to the Marcellus at an estimated total vertical depth of approximately 7080'. Drill horizontal leg to estimated 25,103' lateral length, 32,725' TMD. Hydraulically fracture, stimulate and be capable of producing from the Marcellus Formation. Should we encounter an unanticipated void in the coal, we will install a minimum of 20' of casing below the void but not more than 100' below the void, set a basket and grout to surface. We plan to run an ACP above the Gantz/Dominion Storage interval to aid in sealing off and isolating the storage interval.

20) Describe fracturing/stimulating methods in detail, including anticipated max pressure and max rate:

The stimulation will be completed with multiple stages divided over the lateral length of the well. Stage spacing is dependent upon engineering design. Slickwater fracturing technique will be utilized on each stage using sand, water, and chemicals. See attached list. Maximum pressure not to exceed 12,500 psi.

21) Total Area to be disturbed, including roads, stockpile area, pits, etc., (acres): 30.31 acres

22) Area to be disturbed for well pad only, less access road (acres): 9.74 acres

23) Describe centralizer placement for each casing string:

No centralizers will be used with conductor casing.
Freshwater/Coal - centralized every 3 joints to surface.
Intermediate 1 - Bow Spring on every joint, will also be running ACP for isolating storage zone
Intermediate 2 - Bow Spring on first 2 joints then every third joint to 100' from surface.
Production - Vertical - Run 1 spiral centralizer every 5 joints from the top of the curve to surface, Curve - Run 1 spiral centralizer every 3 joints from the 1st 5.5' long joint to the top of the curve.

RECEIVED
Office of Oil and Gas
JAN 24 2024
WV Department of
Environmental Protection

24) Describe all cement additives associated with each cement type:

Conductor -N/A, Casing to be drilled in w/ Dual Rotary Rig.
Fresh Water/Coal - *15.6 ppg FNE-1 + 3% bwoc CaCl40% ExcessYield=1.20 / CTS*
Intermediate 1 - **** Storage String **** CTS ****15.4 ppg Lead - Yield 1.24 - D896 Surface Set 100 lb / sack (Mix of Class A and Gypsum to meet Dominion Requirements)B348 - 0.5% BWOB Fluid Loss / D013 - 0.75% BWOB Retarder / D47 - 0.02 gal / sack VBWOB Anti Foam / D202 - 0.15% BWOB Dispersant / D095 1.5 lb per BBL CemNET* - 60% Excess15.9 ppg Tail - Yield 1.17 - D896 Surface Set 100 lb / sack (Mix of Class A and Gypsum to meet Dominion Requirements)B160A - 0.15% BWOB Dispersant / B547 - 0.35% BWOB GasBLOK* / D013 - 0.3% BWOB Retarder / D047 - 0.02 gal / sack Anti Foam / D801 - 0.03 gal / sack Retarder - 0% Excess*
Intermediate 2 - *Lead: 15.4 ppg PNE-1 + 2.5% bwoc CaCl40% Excess / Tail: 15.9 ppg PNE-1 + 2.5% bwoc CaCl zero% Excess. CTS*
Production - *Lead: 14.5 ppg POZ:PNE-1 + 0.3% bwoc R3 + 1% bwoc EC1 + 0.75 gal/sk FP13L + 0.3% bwoc MPA170Tail: 14.8 ppg PNE-1 + 0.35% bwoc R3 + 0.75 gal/sk FP13L + 50% bwoc ASCA1 + 0.5% bwoc MPA17020% ExcessLead Yield=1.19Tail Yield=1.94CTS*

25) Proposed borehole conditioning procedures:

Conductor - Ensure the hole is clean at TD.
Fresh Water/Coal - Once casing is at setting depth, circulate a minimum of one hole volume with Fresh Water prior to pumping cement.
Intermediate 1 - Once casing is at setting depth, Circulate and condition at TD. Circulate a minimum of one hole volume prior to pumping cement.
Intermediate 2 - Once casing is at setting depth, Circulate and condition mud at TD. Circulate a minimum of one hole volume prior to pumping cement.
Production - Once on bottom/TD with casing, circulate at max allowable pump rate for at least 2x bottoms up, or until returns and pump pressures indicate the hole is clean. Circulate a minimum of one hole volume prior to pumping cement.

*Note: Attach additional sheets as needed.



1216 S-8H
Marcellus Shale Horizontal
Lewis County, WV

14201803.78N 1762681.13E
 14201503.7N 1762954.58E
 14177843.7N 1771296.82E

1216 S-8H SHL
 1216 S-8H LP
 1216 S-8H BHL

1394'
 160.488°

Ground Elevation

Azimuth

WELLBORE DIAGRAM

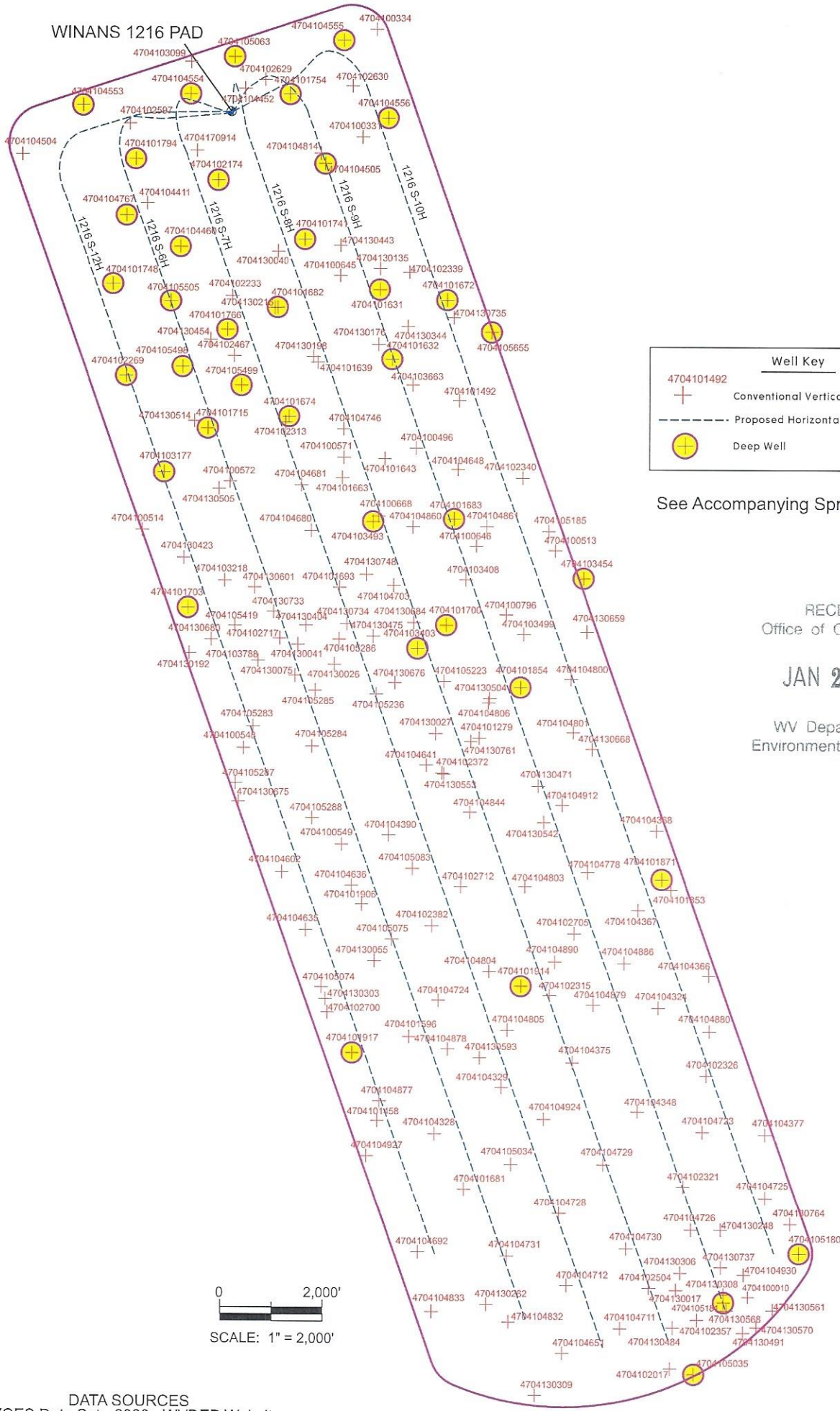
HOLE	CASING	GEOLOGY	TOP	BASE	MUD	CEMENT	CENTRALIZERS	CONDITIONING	COMMENTS
30"	30" 157.5# LS	Conductor	0	120	AIR	N/A, Casing to be drilled in w/ Dual Rotary Rig	N/A	Ensure the hole is clean at TD.	Conductor casing = 0.5" wall thickness
		Fresh Water	0	214, 600, 861, 1306		15.6 ppg PNE-1 + 3% bwoc CaCl 40% Excess Yield=1.20 / CTS	Centralized every 3 joints to surface	Once casing is at setting depth, circulate a minimum of one hole volume with Fresh Water prior to pumping cement.	Surface casing = 0.438" wall thickness Burst=2110 psi
26"	20" 94# J-55	Coals	650, 800, 1414	654, 802, 1417	AIR				
		Fresh Water Protection	0	1360		See above (LEFT) for Storage String Cement Blend to Meet DTI Requirements for Gas Storage Field Isolation	Bow Spring on every joint <i>*will also be running ACP for isolating storage zone*</i>	Once casing is at setting depth, Circulate and condition at TD. Circulate a minimum of one hole volume prior to pumping cement.	Intermediate casing = 0.480" wall thickness Burst=3450 psi
17.5"	13-3/8" 66# J-55 BTC	Little Lime	1927	1942	AIR / KCL				
		Big Lime	1980	2036	Salt				
		Injun / Gantz (Storage)	2036 / 2314	2134 / 2372	Polymer				
		Intermediate 1	0	2480					
		Thirty Foot	2519	2531					
		Gordon	2594	2640					
		5th Sand	2818	2850					
		Bayard	2884	2900					
		Speechley	3515	3531					
		Baltown / Benson	3869 / 4840	3783 / 4868					
12.25"	9-5/8" 40# N / L-80 BTC	Alexander / Elk	5418 / 5647	5543 / 5675	AIR / KCL	Lead: 15.4 ppg PNE-1 + 2.5% bwoc CaCl 0.35% bwoc MPA170 zero% Excess. CTS		Once casing is at setting depth, Circulate and condition mud at TD. Circulate a minimum of one hole volume prior to pumping cement.	Intermediate casing = 0.395" wall thickness Burst=5750 psi
		Intermediate 2	0	TVD: 5900' MD: 5975' inc: 17.664	Salt Polymer				
		Rhinestreet	6170	6404	AIR / 9.0ppg SOBM		Lead: 14.5 ppg POZ:PNE-1 + 0.3% bwoc R3 + 1% bwoc EC1 + 0.75 gal/sk FP13L + 0.3% bwoc MPA170	Run 1 spiral centralizer every 5 joints from the top of the curve to surface.	
		Cashaqua	6404	6658			Tail: 14.8 ppg PNE-1 + 0.35% bwoc R3 + 0.75 gal/sk FP13L + 50% bwoc ASCA1 + 0.5% bwoc MPA170	Once on bottom/TD with casing, circulate at max allowable pump rate for at least 2x bottoms up, or until returns and pump pressures indicate the hole is clean. Circulate a minimum of one hole volume prior to pumping cement.	Production casing = 0.415" wall thickness Burst=16240 psi Note: Actual centralizer schedules may be changed due to hole conditions
		Middlesex	6658	6737	11.5ppg-12.5ppg SOBM				
		West River	6737	6837			Lead Yield=1.19 CTS		
		Burkett	6837	6862					
		Tully Limestone	6862	6954					
		Hamilton	6954	7027					
		Marcellus	7027	7100					
8.75"	8.5" Curve	TMD / TVD (Production)	32725	7080	11.5ppg-12.5ppg SOBM				
		Onondaga	7100						

LP @ 7080' TVD / 7622 MD
 8.5" Hole - Cemented Long String
 5-1/2" 23# P-110 HP TXP / W461
 +1-25103' ft Lateral
 TD @ +/-7080' TVD
 +/-32725 MD
 X-centrizers

RECEIVED
 Office of Oil and Gas
 JAN 24 2024
 WV Department of Environmental Protection



WINANS 1216 PAD



Well Key

- 4704101492
+ Conventional Vertical Well
- - - Proposed Horizontal Marcellus Well
- ⊕ Deep Well

See Accompanying Spreadsheets

RECEIVED
Office of Oil and Gas

JAN 24 2024

WV Department of
Environmental Protection

DATA SOURCES
WVGES Data Set - 2020; WVDEP Website

Area of Review for:

WINANS 1216 SOUTH UNIT

- Proposed 1216 S-6H Proposed 1216 S-7H Proposed 1216 S-8H
- Proposed 1216 S-9H Proposed 1216 S-10H Proposed 1216 S-12H

HG ENERGY, II APPALACHIA, LLC

5260 DuPont Road, Parkersburg, WV 26101

02/02/2024



Freeman's Creek District, Lewis County, W.Va.

10/11/2023

EXISTING WELLS LOCATED WITHIN THE AREA OF REVIEW FOR:

WINANS 1216 SOUTH UNIT AND PROPOSED WELLS S-6H, S-7H, S-8H, S-9H, S-10H & S-12H

CT	API	COUNTY	FARM	OPERATOR NAME	FORMATION NAME	WELL TYPE	TVD	STATUS	LATITUDE	LONGITUDE
1	4704100010	Lewis	C & M L Butcher	Southern Oil Compnay	3rd Salt Sand	Oil	1326	PLUGGED	39.043400	-80.533660
2	4704100331	Lewis	J B Halterman	Eastern Gas Transmission & Storage, Inc.	Gantz	Storage	2278	ACTIVE	39.105683	-80.560034
3	4704100334	Lewis	Alice Burnside	Eastern Gas Transmission & Storage, Inc.	Hampshire Grp	Storage	2478	ACTIVE	39.111415	-80.559086
4	4704100496	Lewis	Doris Simmons	Diversified Production, LLC	Price Fm & equivs	Gas	1666	ACTIVE	39.089028	-80.556374
5	4704100513	Lewis	J A White	Clem Energy, LLC	Price Fm & equivs	Gas	1410	ACTIVE	39.083465	-80.546827
6	4704100514	Lewis	P White	Clem Energy LLC	Price Fm & equivs	Gas	1730	ACTIVE	39.084640	-80.575232
7	4704100548	Lewis	Stark A White	Appalachian Land & Development Co.	Up Devonian	Gas w/ Oil Show	2492	ABANDONED	39.072957	-80.568290
8	4704100549	Lewis	S A White	Appalachian Land & Development Co.	Price Fm & equivs	Gas w/ Oil Show	1610	ABANDONED	39.067763	-80.561574
9	4704100571	Lewis	Harold Hull et al	Central Contracting, Inc.	Price Fm & equivs	Gas	1780	PLUGGED	39.088536	-80.561353
10	4704100572	Lewis	Alva White et al	Central Contracting, Inc.	Price Fm & equivs	Dry w/ O&G Show	1790	PLUGGED	39.08724	-80.569209
11	4704100645	Lewis	Susan Snyder	Blue Creek Gas Company	Price Fm & equivs	Dry	1996	PLUGGED	39.098262	-80.561583
12	4704100646	Lewis	G L White	Clem Energy, LLC	Price Fm & equivs	Gas	1609	ACTIVE	39.083741	-80.552248
13	4704100668	Lewis	Doris Simmons	Allegheny Land and Mineral Co.	Price Fm & equivs	Gas w/ Oil Show	1756	PLUGGED	39.085355	-80.558974
14	4704100796	Lewis	G L White	Diversified Production, LLC	Big Lime	Gas	1806	ACTIVE	39.080058	-80.550182
15	4704101279	Lewis	G L White	Diversified Production, LLC	Gordon (undiff)	Gas	2238	ACTIVE	39.073463	-80.552063
16	4704101458	Lewis	S D Camden	Diversified Production LLC	Undf PRICE biw INJM	Gas w/ Oil Show	1984	ACTIVE	39.052971	-80.559152
17	4704101492	Lewis	Helen Garrett	Eastern Gas Transmission & Storage, Inc.	Greenland Gap Fm	Gas	4435	ACTIVE	39.091562	-80.553411
18	4704101596	Lewis	S D Camden	Diversified Production, LLC	Big Injun (Grnbr)	Gas w/ Oil Show	1618	ACTIVE	39.057434	-80.556957
19	4704101631	Lewis	W F Snyder et al	Diversified Production, LLC	Benson	Gas	4730	ACTIVE	39.097494	-80.558873
20	4704101632	Lewis	Kenneth T & Mary Hall	Diversified Production, LLC	Benson	Gas	4628	ACTIVE	39.093769	-80.558025
21	4704101639	Lewis	Kenneth T & Mary Hall	Diversified Production, LLC	Brallier	Gas	4488	ACTIVE	39.093610	-80.563144
22	4704101643	Lewis	Doris Simmons	Clem Energy, LLC	Brallier	Gas	4460	ACTIVE	39.088462	-80.558541
23	4704101663	Lewis	Harold Hull	Dorward Energy Corp.	Benson	Gas	4446	ACTIVE	39.087443	-80.561455
24	4704101672	Lewis	Israel Simmons	Eastern Gas Transmission & Storage, Inc.	Greenland Gap Fm	Gas	4520	ACTIVE	39.096922	-80.554238
25	4704101674	Lewis	B White	Diversified Production, LLC	Benson	Gas	4528	ACTIVE	39.090721	-80.565117
26	4704101681	Lewis	S D Camden	Diversified Production, LLC	Benson	Gas	4385	ACTIVE	39.049259	-80.553203
27	4704101682	Lewis	W F Snyder&Others	Diversified Production, LLC	Benson	Gas	4660	ACTIVE	39.096556	-80.565907
28	4704101683	Lewis	G L White	Diversified Production, LLC	Benson	Gas	4522	ACTIVE	39.085192	-80.553769
29	4704101693	Lewis	Lorentz See	Dorward Energy Corp.	not available	Gas	-	ACTIVE	39.081538	-80.561671
30	4704101700	Lewis	John A White	Allegheny Land and Mineral Co.	Benson	Dry	4570	PLUGGED	39.079510	-80.554321
31	4704101703	Lewis	Pitt F White	Allegheny Land and Mineral Co.	Benson	Dry	4706	PLUGGED	39.080472	-80.572092
32	4704101715	Lewis	Critchdon White Hrs	Diversified Production, LLC	Benson	Gas	4671	ACTIVE	39.090089	-80.570728
33	4704101741	Lewis	Steven B Winans	Eastern Gas Transmission & Storage, Inc.	Greenland Gap Fm	Gas	4607	ACTIVE	39.100224	-80.564020
34	4704101748	Lewis	Garnett A Gum	Eastern Gas Transmission & Storage, Inc.	Benson	Gas	4583	ACTIVE	39.097824	-80.577218
35	4704101754	Lewis	Nell L Hull	Eastern Gas Transmission & Storage, Inc.	Greenland Gap Fm	Gas	4853	ACTIVE	39.107951	-80.565019

02/02/2024

36	4704101766	Lewis	William Robert Hull	Eastern Gas Transmission & Storage, Inc.	Benson	Gas	4578	ACTIVE	39.095372	-80.569361
37	4704101794	Lewis	Robert McKinley/R Seckma	Eastern Gas Transmission & Storage, Inc.	Greenland Gap Fm	Gas	4600	ACTIVE	39.104510	-80.575661
38	4704101853	Lewis	M L Butcher	UNKNOWN	not available	not available	-	NEVER DRILLED	39.065298	-80.538880
39	4704101854	Lewis	G L White	Mineral Resource Management, LLC	Helderberg	Gas	7260	ACTIVE	39.076163	-80.549234
40	4704101871	Lewis	M L Butcher	Mountain V, LLC	Helderberg	Gas	7104	ACTIVE	39.065841	-80.539537
41	4704101906	Lewis	White Egan	Diversified Production, LLC	Big Injun (Grnbr)	Gas	1791	ACTIVE	39.064568	-80.560201
42	4704101914	Lewis	J T Lovett	Eastern Gas Transmission & Storage, Inc.	Helderberg	Gas	7243	PLUGGED	39.060133	-80.549241
43	4704101917	Lewis	Irene M Hall Trust	Diversified Production LLC	Helderberg	Gas	7491	PLUGGED	39.056574	-80.560878
44	4704102017	Lewis	James Jarvis	Diversified Production, LLC	Balltown	Dry w/ Gas Show	3679	ACTIVE	39.039584	-80.539051
45	4704102174	Lewis	Stephen Winans/J Williams	Eastern Gas Transmission & Storage, Inc.	Benson	Gas	4789	ACTIVE	39.103388	-80.569965
46	4704102233	Lewis	Robert Hull	Eastern Gas Transmission & Storage, Inc.	Balltown	Gas	3670	ACTIVE	39.097169	-80.569019
47	4704102269	Lewis	John K Gum	Eastern Gas Transmission & Storage, Inc.	Benson	Gas	4807	ACTIVE	39.092904	-80.576325
48	4704102313	Lewis	B White	Diversified Production, LLC	Hampshire Grp	Gas	2257	ACTIVE	39.090424	-80.565359
49	4704102315	Lewis	C Lovett	Ross & Wharton Gas Company, Inc.	not available	not available	-	ACTIVE	39.059642	-80.547249
50	4704102321	Lewis	Sprigg D Camden	Diversified Production, LLC	Hampshire Grp	Gas	2253	ABANDONED	39.049346	-80.538127
51	4704102326	Lewis	S Camden	Diversified Production, LLC	not available	not available	-	ACTIVE	39.055308	-80.536500
52	4704102339	Lewis	J Simmons	Eastern Gas Transmission & Storage, Inc.	Gordon	Gas	2426	PLUGGED	39.098434	-80.556812
53	4704102340	Lewis	J Simmons	Eastern Gas Transmission & Storage, Inc.	not available	Gas	-	ACTIVE	39.087382	-80.549064
54	4704102357	Lewis	J Jarvis	Diversified Production, LLC	UNKNOWN	Gas	-	ACTIVE	39.041615	-80.536821
55	4704102372	Lewis	White-Egan	Diversified Production, LLC	Hampshire Grp	Gas w/ Oil Show	2470	ACTIVE	39.071583	-80.554635
56	4704102382	Lewis	J Lovett	Diversified Production, LLC	Hampshire Grp	Oil and Gas	2453	ACTIVE	39.063420	-80.555354
57	4704102467	Lewis	J P Hull	Eastern Gas Transmission & Storage, Inc.	Hampshire Grp	Gas	2650	ACTIVE	39.093972	-80.568887
58	4704102504	Lewis	James Jarvis	East Resources, Inc.	Bayard	not available	-	PLUGGED	39.043897	-80.540468
59	4704102597	Lewis	J P Hull	Eastern Gas Transmission & Storage, Inc.	not available	Storage	-	ACTIVE	39.106411	-80.576060
60	4704102629	Lewis	Boyd Gum	Eastern Gas Transmission & Storage, Inc.	not available	not available	-	PLUGGED	39.108752	-80.566720
61	4704102630	Lewis	A Burnside	Eastern Gas Transmission & Storage, Inc.	not available	Storage	-	ACTIVE	39.108394	-80.560719
62	4704102700	Lewis	S D Camden	Diversified Production LLC	Big Injun (Grnbr)	Gas	2473	ACTIVE	39.058773	-80.562556
63	4704102705	Lewis	Adolphus Fisher	Diversified Production, LLC	Big Injun (Grnbr)	Gas	1890	ACTIVE	39.062956	-80.545573
64	4704102712	Lewis	White-Egan	Diversified Production, LLC	Hampshire Grp	Gas	2242	ZABANDONED	39.065522	-80.553357
65	4704102717	Lewis	W S White	Diversified Production, LLC	Hampshire Grp	Gas	2630	ACTIVE	39.078823	-80.565815
66	4704103099	Lewis	J W Eakin	Eastern Gas Transmission & Storage, Inc.	Mauch Chunk	Dry	1695	PLUGGED	39.109710	-80.571810
67	4704103177	Lewis	Grafton Coal	Mountain V, LLC ^{RECEIVED}	Benson	Gas	4774	ACTIVE	39.087758	-80.573721
68	4704103218	Lewis	Grafton Coal Co	Mountain V, LLC ^{Office of Oil and Gas}	Balltown	Gas	3976	ACTIVE	39.081897	-80.569585
69	4704103403	Lewis	R Hall/D Fisher	Mountain V, LLC	Benson	Gas	4672	ACTIVE	39.078285	-80.556311
70	4704103408	Lewis	R Hall/D Fisher	Mountain V, LLC	Benson	Gas	4478	ACTIVE	39.081931	-80.552958
71	4704103454	Lewis	Fisher et al	Mountain V, LLC	Benson	Gas	4602	ACTIVE	39.081958	-80.544873
72	4704103493	Lewis	Louise Hull	Clem Energy, LLC ^{RECEIVED}	Elk	Gas	5119	ACTIVE	39.085065	-80.559346
73	4704103499	Lewis	R & R White	Diversified Production, LLC	Alexander	Gas	4419	ACTIVE	39.079007	-80.548973
74	4704103663	Lewis	Louise Hull	Clem Energy, LLC	Balltown	Gas	4252	ACTIVE	39.092388	-80.556603

02/02/2024

75	4704103788	Lewis	Mark White et al	Diversified Production, LLC	Balltown	Gas	3618	ACTIVE	39.077644	-80.567309
76	4704104324	Lewis	Elmer C Cox	Diversified Production, LLC	Greenland Gap Fm	Gas	2620	ACTIVE	39.058932	-80.539797
77	4704104328	Lewis	Simeon A Hall Jr	Diversified Production, LLC	Greenland Gap Fm	Gas	2691	ACTIVE	39.052216	-80.555237
78	4704104329	Lewis	Simeon A Hall Jr	Diversified Production, LLC	Greenland Gap Fm	Gas	2711	ACTIVE	39.054632	-80.550638
79	4704104348	Lewis	James Luke White	Diversified Production, LLC	Greenland Gap Fm	Gas	2720	ACTIVE	39.053402	-80.541246
80	4704104366	Lewis	Jay T Shearer	Red Gas Co.	Greenland Gap Fm	Gas	2510	ACTIVE	39.060668	-80.536312
81	4704104367	Lewis	Jay T Shearer	Red Gas Co.	not available	not available	-	ACTIVE	39.064193	-80.541165
82	4704104368	Lewis	Jay T Shearer	Red Gas Co.	Price Fm & equivs	Gas	2013	ACTIVE	39.068425	-80.539887
83	4704104375	Lewis	Allen D Marple	Diversified Production, LLC	Greenland Gap Fm	Gas	2542	ACTIVE	39.056009	-80.545721
84	4704104377	Lewis	James Luke White	Diversified Production, LLC	Greenland Gap Fm	Gas	2636	ACTIVE	39.052127	-80.532474
85	4704104390	Lewis	Burl White	Diversified Production, LLC	Greenland Gap Fm	Gas	2600	ACTIVE	39.068276	-80.558311
86	4704104411	Lewis	Hull	Berry Energy, LLC	Greenland Gap Fm	not available	2660	ACTIVE	39.102159	-80.574886
87	4704104452	Lewis	Nell Louise Hull	Consol Gas Co.	Big Lime	Dry	2330	PLUGGED	39.108268	-80.568101
88	4704104460	Lewis	William R Hull	Eastern Gas Transmission & Storage, Inc.	Greenland Gap Fm	Gas	4784	ACTIVE	39.099830	-80.572566
89	4704104504	Lewis	Claude Goldsmith	Eastern Gas Transmission & Storage, Inc.	UNKNOWN	not available	-	PLUGGED	39.104768	-80.583437
90	4704104505	Lewis	Nell Louise Hull	Eastern Gas Transmission & Storage, Inc.	Greenland Gap Fm	Gas	4906	ACTIVE	39.104259	-80.562609
91	4704104553	Lewis	Robert McKinley et al	Eastern Gas Transmission & Storage, Inc.	Greenland Gap Fm	Gas	5185	ACTIVE	39.107391	-80.579259
92	4704104554	Lewis	Robert McKinley et al	Eastern Gas Transmission & Storage, Inc.	Greenland Gap Fm	Gas	4807	ACTIVE	39.107977	-80.571851
93	4704104555	Lewis	Robert E Thompson	Eastern Gas Transmission & Storage, Inc.	Greenland Gap Fm	Gas	4839	ACTIVE	39.110838	-80.561324
94	4704104556	Lewis	Robert E Thompson	Eastern Gas Transmission & Storage, Inc.	Greenland Gap Fm	Gas	4806	ACTIVE	39.106687	-80.558262
95	4704104602	Lewis	John Cole Jr et ux	Eastern Gas Transmission & Storage, Inc.	Greenland Gap Fm	Gas	3865	ACTIVE	39.066323	-80.565673
96	4704104635	Lewis	Burl L White	Petroleum Resources, LLC	Greenland Gap Fm	Gas	3865	ACTIVE	39.063208	-80.564034
97	4704104636	Lewis	Burl L White	Diversified Production LLC	Greenland Gap Fm	Gas	3619	ACTIVE	39.065580	-80.560900
98	4704104641	Lewis	White Family Trust	Diversified Production, LLC	Greenland Gap Fm	Gas	3646	ACTIVE	39.072010	-80.555702
99	4704104648	Lewis	Gerald Phillip Hull	Diversified Production, LLC	Greenland Gap Fm	Gas	3625	ACTIVE	39.087888	-80.553505
100	4704104651	Lewis	Walter Lee Jordan II	Eastern Gas Transmission & Storage, Inc.	Greenland Gap Fm	Gas	3686	ACTIVE	39.040442	-80.546438
101	4704104680	Lewis	Gerald P Hull	Diversified Production, LLC	Greenland Gap Fm	Gas	3594	ACTIVE	39.084589	-80.563605
102	4704104681	Lewis	Edward Clyde/Uurma Hull	Dorward Energy Corp.	Balltown	Gas	2600	ACTIVE	39.087058	-80.564273
103	4704104692	Lewis	Faye E Riley	Dorward Energy Corp.	Greenland Gap Fm	Gas w/ Oil Show	2711	ACTIVE	39.045865	-80.556360
104	4704104703	Lewis	Louise Hull	Diversified Production LLC RECEIVED	Greenland Gap Fm	Gas	3659	ACTIVE	39.081634	-80.557932
105	4704104711	Lewis	Walter L Jordan	Petroleum Resources, LLC	Misc Sands-RILY/BNSN	Gas	2630	ACTIVE	39.041746	-80.542448
106	4704104712	Lewis	Walter L Jordan	Diversified Production, LLC	Greenland Gap Fm	Gas	2720	ACTIVE	39.044039	-80.546158
107	4704104723	Lewis	James Luke White	Diversified Production, LLC	Greenland Gap Fm	Gas	2535	ACTIVE	39.052291	-80.536785
108	4704104724	Lewis	Irene M Hall Trust	Diversified Production, LLC	Greenland Gap Fm	Gas	2753	ACTIVE	39.059384	-80.554937
109	4704104725	Lewis	James Luke White	Diversified Production, LLC	Greenland Gap Fm	Gas	2568	ACTIVE	39.048754	-80.532462
110	4704104726	Lewis	James Luke White	Diversified Production, LLC	Greenland Gap Fm	Gas	2523	ACTIVE	39.047025	-80.537568
111	4704104728	Lewis	Lewis Debrular	Diversified Production, LLC	Greenland Gap Fm	Gas	2700	ACTIVE	39.047911	-80.546650
112	4704104729	Lewis	Lewis Debrular	Diversified Production, LLC	Greenland Gap Fm	Gas	2494	ACTIVE	39.050549	-80.543618
113	4704104730	Lewis	Lewis Debrular	Diversified Production, LLC	Greenland Gap Fm	Gas	2688	ACTIVE	39.046010	-80.542030

02/02/2024

114	4704104731	Lewis	Lewis Stephen Debrular	Diversified Production, LLC	Elizabeth	Oil and Gas	2696	ACTIVE	39.045613	-80.550259
115	4704104746	Lewis	Gerald P Hull et ux	Dorward Energy Corp.	Greenland Gap Fm	Gas	3422	ACTIVE	39.090052	-80.561368
116	4704104767	Lewis	Harriett Ahanasio	Eastern Gas Transmission & Storage, Inc.	Misc Sands-BNSN/BRLR	Gas	4852	ACTIVE	39.101509	-80.576295
117	4704104778	Lewis	Lewis J Linger II	Diversified Production, LLC	Greenland Gap Fm	Gas	2630	ACTIVE	39.066243	-80.544611
118	4704104800	Lewis	Charles E White	Diversified Production, LLC	Greenland Gap Fm	Gas	2730	ACTIVE	39.076630	-80.545732
119	4704104801	Lewis	Bruce Garrett et al	Diversified Production, LLC	Greenland Gap Fm	Gas	2550	ACTIVE	39.073734	-80.545613
120	4704104803	Lewis	Rodger L Myers	Diversified Production, LLC	Greenland Gap Fm	Gas	2614	ACTIVE	39.065516	-80.548918
121	4704104804	Lewis	Rodger L/Coleen M Myers	Diversified Production, LLC	Greenland Gap Fm	Gas	2720	ACTIVE	39.060957	-80.551402
122	4704104805	Lewis	Rodger L/Coleen M Myers	Diversified Production, LLC	Greenland Gap Fm	Gas	2720	ACTIVE	39.057778	-80.550190
123	4704104806	Lewis	Charles E White et al	Diversified Production, LLC	Hampshire Grp	Gas	2552	ACTIVE	39.075358	-80.551410
124	4704104814	Lewis	Gerald Philip Hull	Eastern Gas Transmission & Storage, Inc.	not available	not available	-	PLUGGED	39.104815	-80.562913
125	4704104832	Lewis	Robins Nest Farms LLC	Diversified Production, LLC	Greenland Gap Fm	Gas	3809	ACTIVE	39.042104	-80.550153
126	4704104833	Lewis	Robins Nest Farms Inc	Diversified Production LLC	Greenland Gap Fm	Gas	3682	ACTIVE	39.042674	-80.555430
127	4704104844	Lewis	White Family Revoc Trst	Diversified Production, LLC	Greenland Gap Fm	Gas	2671	ACTIVE	39.069483	-80.552719
128	4704104860	Lewis	Gerald Hull	Petroleum Resources, LLC	Greenland Gap Fm	Gas	3602	ACTIVE	39.084777	-80.556598
129	4704104861	Lewis	Louise Hull	Petroleum Resources, LLC	Greenland Gap Fm	Gas	3602	ACTIVE	39.084779	-80.551523
130	4704104877	Lewis	Irene M Hall Trst	Diversified Production LLC	Greenland Gap Fm	Gas	2780	ACTIVE	39.053998	-80.559017
131	4704104878	Lewis	Irene Hall Trust	Diversified Production, LLC	Greenland Gap Fm	Gas	2600	ACTIVE	39.056763	-80.554305
132	4704104879	Lewis	Allen D/Sharon M Marple	Diversified Production, LLC	Hampshire Grp	Gas	2501	ACTIVE	39.059105	-80.544259
133	4704104880	Lewis	Nancy E Smith/M Grogg	Diversified Production, LLC	Hampshire Grp	Gas	2722	ACTIVE	39.057660	-80.536281
134	4704104886	Lewis	Nancy E Smith/M Grogg	Diversified Production, LLC	RECEIVED Hampshire Grp Office of Oil and Gas	Gas	2625	ACTIVE	39.061353	-80.542127
135	4704104890	Lewis	Rodger L/Coleen M Myers	Diversified Production, LLC	Hampshire Grp	Gas	2530	ACTIVE	39.061434	-80.546904
136	4704104912	Lewis	Lewis J Linger II	Diversified Production, LLC	Hampshire Grp	Gas	2730	ACTIVE	39.069837	-80.546357
137	4704104924	Lewis	Allen D/Sharon M Marple	Diversified Production, LLC	Greenland Gap Fm	Gas	2600	ACTIVE	39.053002	-80.547692
138	4704104927	Lewis	Terry L/Debra C Moss	Diversified Production LLC	Greenland Gap Fm	Gas	2720	ACTIVE	39.051085	-80.559895
139	4704104930	Lewis	James Luke White	Diversified Production, LLC	Greenland Gap Fm	Gas	2780	ACTIVE	39.044591	-80.539953
140	4704105034	Lewis	Irene Hall Trust	Diversified Production, LLC	Greenland Gap Fm	Gas	2420	ACTIVE	39.050578	-80.549951
141	4704105035	Lewis	Arthur B Alton et al	Stephen Gas Co.	Greenland Gap Fm	Gas	4887	ACTIVE	39.039272	-80.537405
142	4704105063	Lewis	Gerald P Hull	Eastern Gas Transmission & Storage, Inc.	Alexander	Gas	5031	ACTIVE	39.109976	-80.568828
143	4704105074	Lewis	Burl L White	Diversified Production LLC	Greenland Gap Fm	Gas	2750	ACTIVE	39.060142	-80.562960
144	4704105075	Lewis	Burl L White	Diversified Production, LLC	Bayard	Gas	2720	ACTIVE	39.062685	-80.558131
145	4704105083	Lewis	Burl L White	Diversified Production, LLC	Bayard	Gas	2720	ACTIVE	39.066493	-80.556673
146	4704105180	Lewis	Harold Humphrey	Diversified Production, LLC	Greenland Gap Fm	Gas	4700	ACTIVE	39.045720	-80.530128
147	4704105181	Lewis	James Luke White	Diversified Production, LLC	Misc Sands-BNSN/BRLR	Gas	4900	ACTIVE	39.043110	-80.535334
148	4704105185	Lewis	Gerald Hull	Eastern Gas Transmission & Storage, Inc.	Greenland Gap Fm	Gas	3440	ACTIVE	39.084491	-80.547275
149	4704105223	Lewis	Ronald W White et al	Diversified Production, LLC	Greenland Gap Fm	Gas	3620	ACTIVE	39.076523	-80.554486
150	4704105236	Lewis	Edwin A Linger	Diversified Production, LLC	Greenland Gap Fm	Gas	3590	ACTIVE	39.075863	-80.559155
151	4704105283	Lewis	Edwin A Linger	Diversified Production LLC	Greenland Gap Fm	Gas	3650	ACTIVE	39.074130	-80.567630
152	4704105284	Lewis	Edwin A Linger	Diversified Production, LLC	Greenland Gap Fm	Gas	3650	ACTIVE	39.073018	-80.563595

02/02/2024

153	4704105285	Lewis	Edwin A Linger	Diversified Production, LLC	Greenland Gap Fm	Gas	3650	ACTIVE	39.076038	-80.563382
154	4704105286	Lewis	Edwin A Linger	Diversified Production, LLC	Greenland Gap Fm	Gas	3800	ACTIVE	39.078775	-80.561696
155	4704105287	Lewis	Edwin A Linger	Diversified Production LLC	Greenland Gap Fm	Gas	3680	ACTIVE	39.071076	-80.568852
156	4704105288	Lewis	Edwin A Linger	Diversified Production, LLC	Greenland Gap Fm	Gas	3650	ACTIVE	39.069183	-80.563606
157	4704105419	Lewis	James M White	Diversified Production, LLC	Greenland Gap Fm	Gas	3675	ACTIVE	39.079491	-80.568893
158	4704105498	Lewis	Peter V Hull	Eastern Gas Transmission & Storage, Inc.	Greenland Gap Fm	Gas	4610	ACTIVE	39.093363	-80.572468
159	4704105499	Lewis	Peter V Hull	Eastern Gas Transmission & Storage, Inc.	Greenland Gap Fm	Gas	4785	ACTIVE	39.092385	-80.568403
160	4704105505	Lewis	Peter V Hull	Eastern Gas Transmission & Storage, Inc.	Greenland Gap Fm	Gas	4558	ACTIVE	39.096877	-80.573276
161	4704105655	Lewis	Helen H Garrett	Eastern Gas Transmission & Storage, Inc.	Brallier	Gas	4747	ACTIVE	39.0955185	-80.551189
162	4704130017	Lewis	George H Jarvis	Reserve Gas Co.	undetermined unit	not available	1000	PLUGGED	39.043779	-80.538609
163	4704130026	Lewis	Stark A White	Reserve Gas Co.	Hampshire Grp	Gas	2635	PLUGGED	39.077456	-80.562031
164	4704130027	Lewis	R H Hall	Reserve Gas Co.	Hampshire Grp	Gas	2483	PLUGGED	39.073709	-80.555064
165	4704130040	Lewis	Henry Winans	Reserve Gas Co.	Hampshire Grp	Gas	2600	PLUGGED	39.099567	-80.565864
166	4704130041	Lewis	C White	Reserve Gas Co.	Hampshire Grp	Gas	2510	UNKNOWN	39.078494	-80.564554
167	4704130055	Lewis	R H Hall	Reserve Gas Co.	Hampshire Grp	Gas	2418	PLUGGED	39.061527	-80.559340
168	4704130075	Lewis	Stark A White	Reserve Gas Co.	Hampshire Grp	Gas	2674	PLUGGED	39.076845	-80.564765
169	4704130135	Lewis	Susan Snyder	Reserve Gas Co.	not available	not available	-	PLUGGED	39.098636	-80.558844
170	4704130176	Lewis	Edna & Harvey Hall	Reserve Gas Co.	Hampshire Grp	Gas	2625	PLUGGED	39.094561	-80.558961
171	4704130192	Lewis	P F White	Hope Natural Gas Company	Fifth	Gas	2712	PLUGGED	39.078059	-80.572006
172	4704130198	Lewis	Edna Simmons	Hope Natural Gas Company	Hampshire Grp	Gas	2388	PLUGGED	39.093911	-80.563443
173	4704130216	Lewis	Susan Snyder	Hope Natural Gas Company	not available	not available	2552	PLUGGED	39.096541	-80.566108
174	4704130248	Lewis	Sprigg D Camden	Hope Natural Gas Company	not available	not available	-	PLUGGED	39.047025	-80.535522
175	4704130262	Lewis	Stalaker Heirs	Hope Natural Gas Company	Hampshire Grp	Gas w/ Oil Show	2582	PLUGGED	39.043044	-80.551659
176	4704130303	Lewis	White-Egan	Hope Natural Gas Company	Hampshire Grp	Gas	2475	PLUGGED	39.059497	-80.562686
177	4704130306	Lewis	James Jarvis	Hope Natural Gas Company	Hampshire Grp	Oil and Gas	2306	PLUGGED	39.044705	-80.538310
178	4704130308	Lewis	Luke White Heirs	Hope Natural Gas Company	Hampshire Grp	Gas	2494	PLUGGED	39.043545	-80.535334
179	4704130309	Lewis	Solomon Jarvis	Hope Natural Gas Company	Hampshire Grp	Gas	2676	PLUGGED	39.038179	-80.548348
180	4704130344	Lewis	Susan Snyder Heirs	Hope Natural Gas Company	Hampshire Grp	Gas w/ Oil Show	2680	PLUGGED	39.095507	-80.556930
181	4704130404	Lewis	Crittenden White	Hope Natural Gas Company	Hampshire Grp	Gas	2306	PLUGGED	39.079509	-80.563996
182	4704130423	Lewis	P F White	Hope Natural Gas Company	Hampshire Grp	Gas	2510	PLUGGED	39.083135	-80.572383
183	4704130443	Lewis	Wm Winans	Hope Natural Gas Company	Fifth	Gas	2558	PLUGGED	39.099888	-80.561565
184	4704130454	Lewis	J Harley Hall	Tri-State Pipe Company, The	1st Salt Sand	Oil	949	PLUGGED	39.094827	-80.570534
185	4704130471	Lewis	W B McNemar	Hope Natural Gas Company	Hampshire Grp	Gas w/ Oil Show	2541	PLUGGED	39.070843	-80.548024
186	4704130475	Lewis	Stark White	Hope Natural Gas Company	Gordon	Gas	2280	PLUGGED	39.078929	-80.559354
187	4704130484	Lewis	James Jarvis	Hope Natural Gas Company	Pottsville Group	Oil	1314	PLUGGED	39.04176	-80.538866
188	4704130491	Lewis	W H Jeffries	Rubin, Joe, etal	3rd Salt Sand	Oil	1355	PLUGGED	39.04147	-80.534031
189	4704130504	Lewis	G L White	Mossor, W. H., et al	Hampshire Grp	Gas	2316	PLUGGED	39.075599	-80.551341
190	4704130505	Lewis	Crittenden White	Hope Natural Gas Company	Hampshire Grp	Gas	2391	PLUGGED	39.086851	-80.569968
191	4704130514	Lewis	Crittenden White	Hope Natural Gas Company	Hampshire Grp	Oil and Gas	2634	PLUGGED	39.090476	-80.571646

02/02/2024

192	4704130542	Lewis	White-Egan	Hope Natural Gas Company	Hampshire Grp	Gas	2416	PLUGGED	39.068923	-80.547626
193	4704130553	Lewis	White-Egan	Hope Natural Gas Company	Hampshire Grp	Oil and Gas	2423	PLUGGED	39.071533	-80.554506
194	4704130561	Lewis	E Cordelia Butcher	Valley Steel Products	undetermined unit	Oil w/ Gas Show	1434	PLUGGED	39.042675	-80.531986
195	4704130568	Lewis	E Cordelia Butcher	Valley Steel Products	Salt Sands (undiff)	Oil	1524	PLUGGED	39.042674	-80.535148
196	4704130570	Lewis	E Cordelia Butcher	Valley Steel Products	undetermined unit	Oil	1483	PLUGGED	39.04176	-80.533102
197	4704130593	Lewis	S D Camden	Hope Natural Gas Company	Hampshire Grp	Gas w/ Oil Show	2402	PLUGGED	39.056306	-80.552085
198	4704130601	Lewis	W H S White	Hope Natural Gas Company	Fifth	Gas w/ Oil Show	2388	PLUGGED	39.081540	-80.567532
199	4704130659	Lewis	G L White	Hope Natural Gas Company	Hampshire Grp	Gas	2399	PLUGGED	39.079108	-80.544659
200	4704130668	Lewis	W J Bailey	Hope Natural Gas Company	Fifth	Gas	2323	PLUGGED	39.072839	-80.544279
201	4704130675	Lewis	Stark White	Hope Natural Gas Company	Hampshire Grp	Gas	2482	PLUGGED	39.070083	-80.568649
202	4704130676	Lewis	Stark White	Hope Natural Gas Company	Hampshire Grp	Gas	2427	PLUGGED	39.076464	-80.557864
203	4704130680	Lewis	W S White	Hope Natural Gas Company	Gordon	Gas	2515	PLUGGED	39.078781	-80.570502
204	4704130684	Lewis	John A White	Hope Natural Gas Company	Gordon	Gas	2116	PLUGGED	39.079655	-80.556554
205	4704130733	Lewis	W H White	Hope Natural Gas Company	Hampshire Grp	Gas	2646	PLUGGED	39.080234	-80.566229
206	4704130734	Lewis	Stark White	Hope Natural Gas Company	Hampshire Grp	Gas	2672	PLUGGED	39.079592	-80.561165
207	4704130735	Lewis	Israel Simmons	Hope Natural Gas Company	Hampshire Grp	Gas	2390	PLUGGED	39.095987	-80.553786
208	4704130737	Lewis	Sprigg D Camden	Hope Natural Gas Company	Gordon Stray	Gas	2494	PLUGGED	39.044995	-80.535521
209	4704130748	Lewis	G L White	Hope Natural Gas Company	Gordon	Gas	2246	PLUGGED	39.082232	-80.559821
210	4704130761	Lewis	G L White	Hope Natural Gas Company	not available	not available	-	PLUGGED	39.073274	-80.552646
211	4704130764	Lewis	S D Camden	Hope Natural Gas Company	not available	not available	-	PLUGGED	39.047325	-80.530743
212	4704170914	Lewis	Boyd Gum	Hope Natural Gas Company	UNKNOWN	not available	-	ABANDONED	39.104977	-80.571421
								YELLOW DENOTES WELL WITH TVD > 4,500'		
								GREEN DENOTES SURVEYED WELLS		

SOURCE: WVGES DATASET (2020) and WVDEP WEBSITE AND FIELD SURVEYS

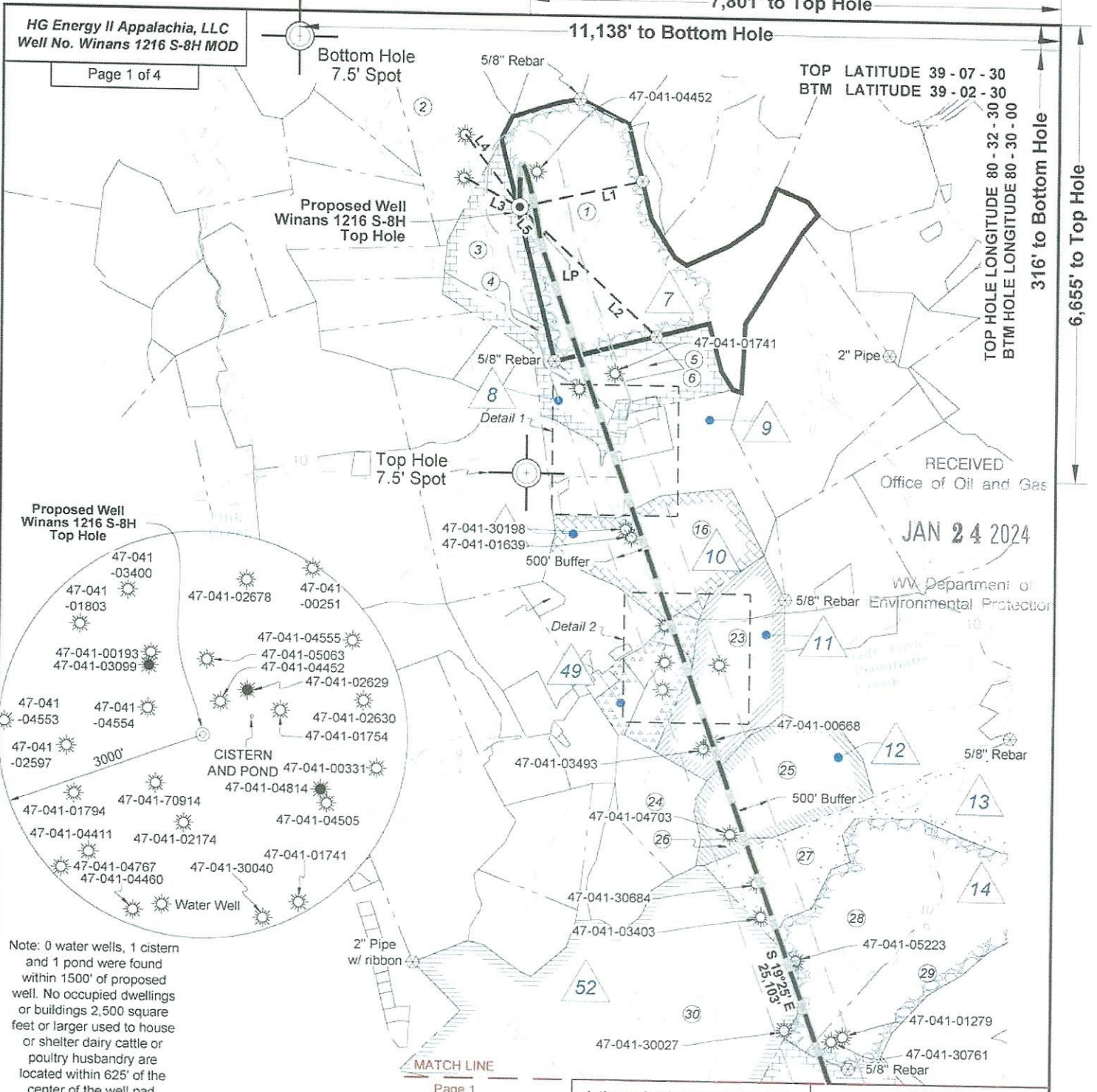
UPDATED 10/11/2023

RECEIVED
Office of Oil and Gas

JAN 24 2024

By: [Signature]
[Title]

02/02/2024



HG Energy II Appalachia, LLC
Well No. Winans 1216 S-8H MOD
Page 1 of 4

RECEIVED
Office of Oil and Gas
JAN 24 2024
WV Department of Environmental Protection

Note: 0 water wells, 1 cistern and 1 pond were found within 1500' of proposed well. No occupied dwellings or buildings 2,500 square feet or larger used to house or shelter dairy cattle or poultry husbandry are located within 625' of the center of the well pad.



Tag	Bearing	Dist.	Monument
L1	S 77°17' W	1,841.0'	1" Pipe
L2	N 47°29' W	2,743.6'	1" Pipe
L3	S 62°46' E	916.3'	47-041-04554
L4	S 37°31' E	1,324.2'	47-041-03099
L5	S 42°20' E	406.0'	Landing Point

I, the undersigned, hereby certify that this plat is correct to the best of my knowledge and belief and shows all the information required by law and the rules issued and prescribed by the Department of Environmental Protection.

Dwayne D. Matheny
Dwayne D. Matheny, P.S. 2070



FILE NO: 43-12-FC-21
DRAWING NO: Winans 1216 S-8H Well Plat
SCALE: 1" = 2000'
MINIMUM DEGREE OF ACCURACY: Submeter
PROVEN SOURCE OF ELEVATION: CORS, Bridgeport, WV

STATE OF WEST VIRGINIA
DEPARTMENT OF ENVIRONMENTAL PROTECTION
OIL AND GAS DIVISION

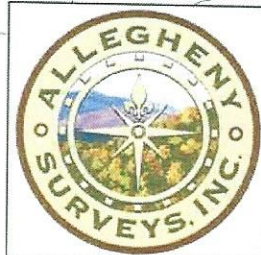
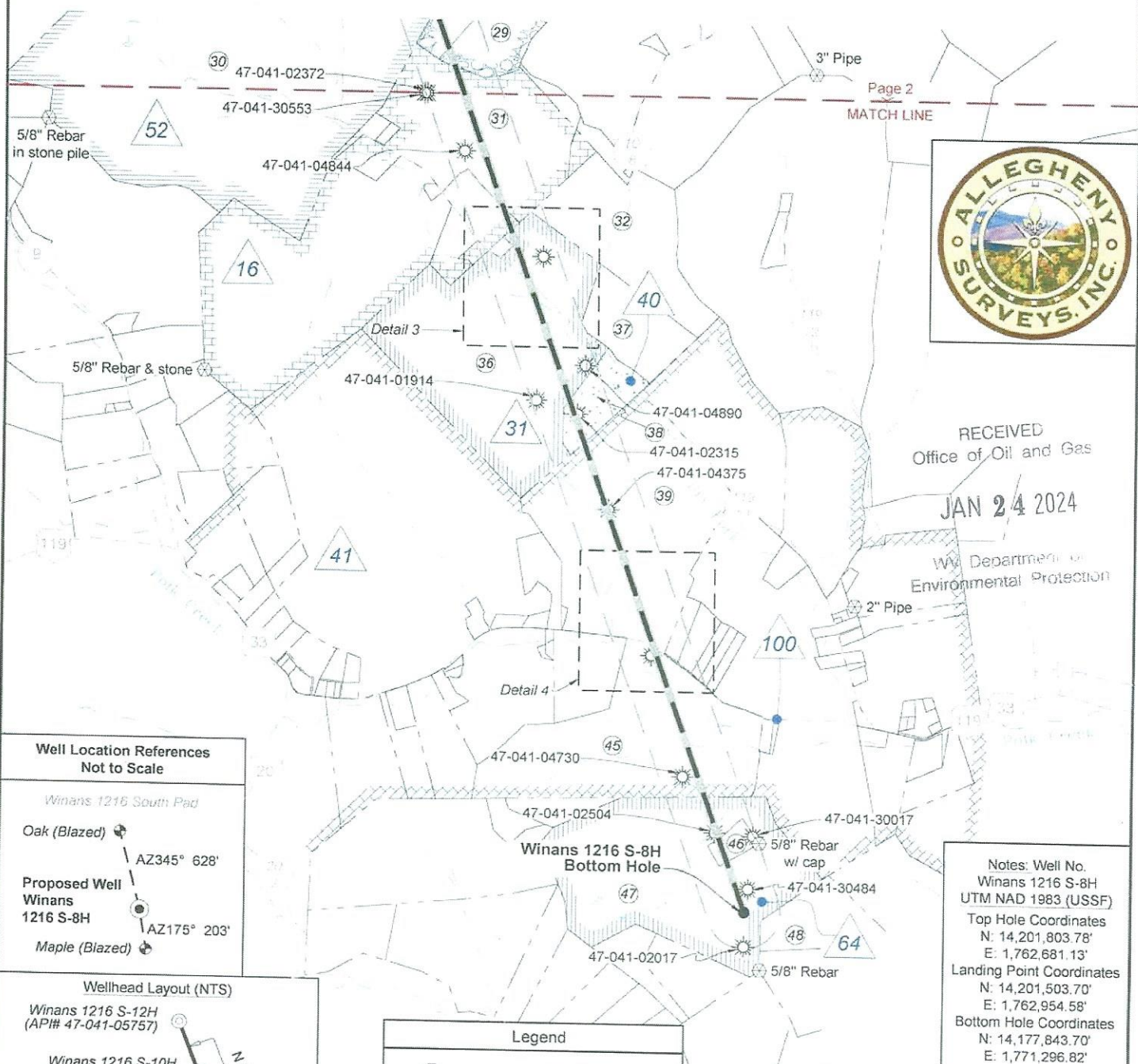
DATE: January 17, 2024
OPERATOR'S WELL NO: Winans 1216 S-8H
API WELL NO: 47-041-05752
STATE COUNTY PERMIT

WELL TYPE: OIL GAS LIQUID INJECTION WASTE DISPOSAL
(IF GAS) PRODUCTION: STORAGE DEEP SHALLOW

LOCATION: ELEVATION: 1,394' WATERSHED: Fink Creek
DISTRICT: Freemans Creek QUADRANGLE: Camden
SURFACE OWNER: Stephen B. Winans COUNTY: Lewis
ROYALTY OWNER: Elaina D. Yanceris, et al, et al LEASE NO: ACREAGE: 45.00
PROPOSED WORK: DRILL CONVERT DRILL DEEPER FRACTURE OR STIMULATE PLUG OFF OLD FORMATION
 PERFORATE NEW FORMATION OTHER PHYSICAL CHANGE IN WELL (SPECIFY) Bottom Hole MOD
 PLUG AND ABANDON CLEAN OUT AND REPLUG TARGET FORMATION: Marcellus Shale ESTIMATED DEPTH: 7,080' TVD
ESTIMATED DEPTH: 32,726' MD

WELL OPERATOR: HG Energy II Appalachia, LLC DESIGNATED AGENT: Diane C. White
ADDRESS: 5260 Dupont Road ADDRESS: 5260 Dupont Road
Parkersburg, WV 26101 Parkersburg, WV 26101

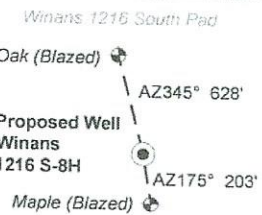
02/02/2024



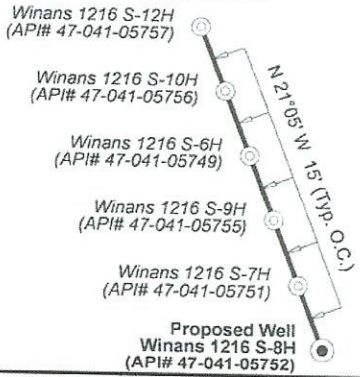
RECEIVED
Office of Oil and Gas
JAN 24 2024

WV Department of
Environmental Protection

**Well Location References
Not to Scale**



Wellhead Layout (NTS)



Legend

- Proposed gas well
- Well Reference, as noted
- ⊗ Monument, as noted
- ☀ Existing Well, as noted
- ☀ Existing Plugged Well, as noted
- ☀ Digitized Well, as noted
- Creek or Drain
- Existing Road
- Surface boundary (approx.)

Notes: Well No. Winans 1216 S-8H
UTM NAD 1983 (USSF)
Top Hole Coordinates
N: 14,201,803.78'
E: 1,762,681.13'
Landing Point Coordinates
N: 14,201,503.70'
E: 1,762,954.58'
Bottom Hole Coordinates
N: 14,177,843.70'
E: 1,771,296.82'

Notes: Well No. Winans 1216 S-8H
West Virginia Coordinate System of 1927, North Zone
based upon Differential GPS Measurements.
Top Hole coordinates Bottom Hole coordinates
Latitude: 39°06'24.21" Latitude: 39°02'26.87"
Longitude: 80°34'09.00" Longitude: 80°32'21.21"
UTM Zone 17, NAD 1983
Top Hole Coordinates Bottom Hole Coordinates
N: 4,328,718.450m N: 4,321,415.403m
E: 537,266.283m E: 539,892.351m
Plat orientation and corner and well references are
based upon the grid north meridian. Well location
references are based upon the magnetic meridian.

FILE NO: 43-12-FC-21
DRAWING NO: Winans 1216 S-8H Well Plat
SCALE: 1" = 2000'
MINIMUM DEGREE OF ACCURACY:
Submeter
PROVEN SOURCE OF ELEVATION:
CORS, Bridgeport, WV

STATE OF WEST VIRGINIA
DEPARTMENT OF ENVIRONMENTAL PROTECTION
OIL AND GAS DIVISION

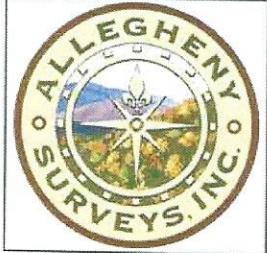
DATE: January 17 2024
OPERATOR'S WELL NO. Winans 1216 S-8H
API WELL NO
47 - 041 - 05752
STATE COUNTY PERMIT

WELL TYPE: OIL GAS LIQUID INJECTION WASTE DISPOSAL
(IF GAS) PRODUCTION: STORAGE DEEP SHALLOW

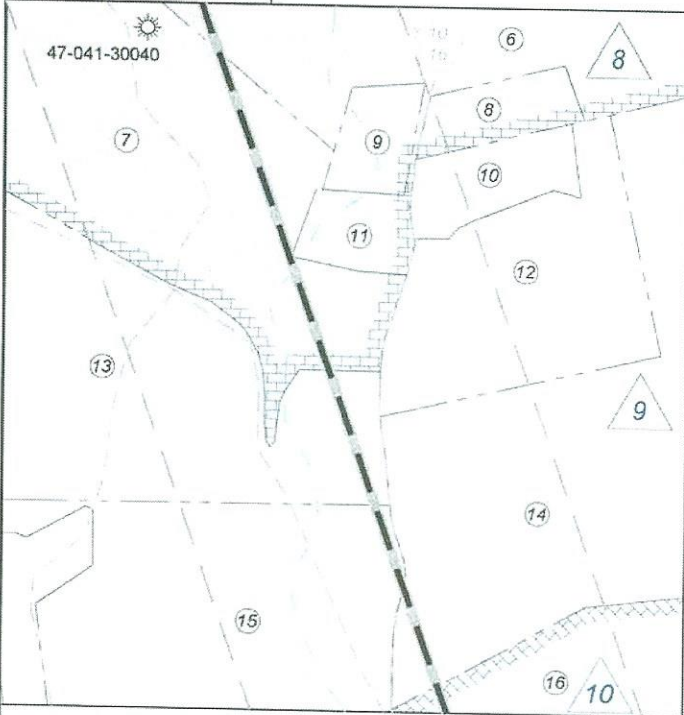
LOCATION: ELEVATION: 1,394' WATERSHED: Fink Creek
DISTRICT: Freemans Creek QUADRANGLE: Camden
SURFACE OWNER: Stephen B. Winans COUNTY: Lewis
ROYALTY OWNER: Elaina D. Yanceris, et al, et al ACREAGE: 45.00
LEASE NO: ACREAGE: 125
PROPOSED WORK: DRILL CONVERT DRILL DEEPER FRACTURE OR STIMULATE PLUG OFF OLD FORMATION
 PERFORATE NEW FORMATION OTHER PHYSICAL CHANGE IN WELL (SPECIFY) Bottom Hole MOD
 PLUG AND ABANDON CLEAN OUT AND REPLUG TARGET FORMATION: Marcellus Shale ESTIMATED DEPTH: 7,080' TVD
32,726' MD

WELL OPERATOR: HG Energy II Appalachia, LLC DESIGNATED AGENT: Diane C. White
ADDRESS: 5260 Dupont Road ADDRESS: 5260 Dupont Road
Parkersburg, WV 26101 Parkersburg, WV 26101

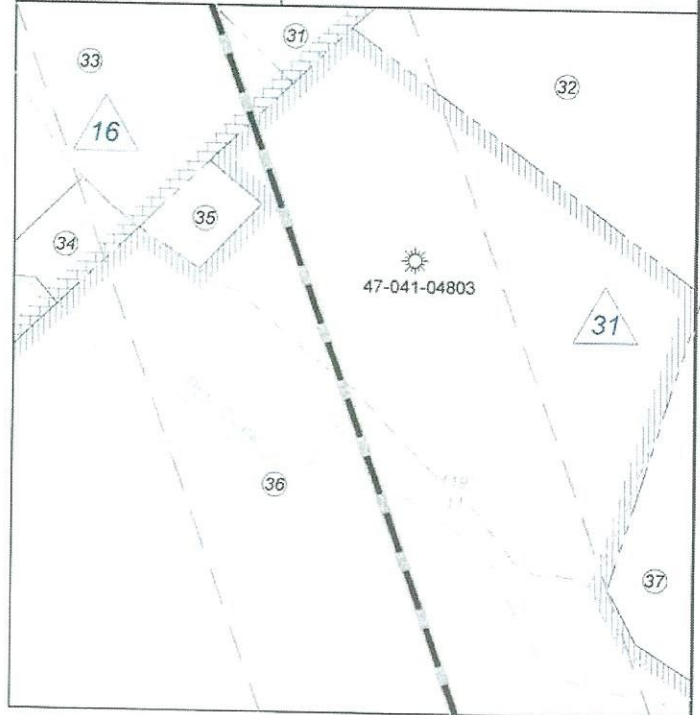
02/02/2024



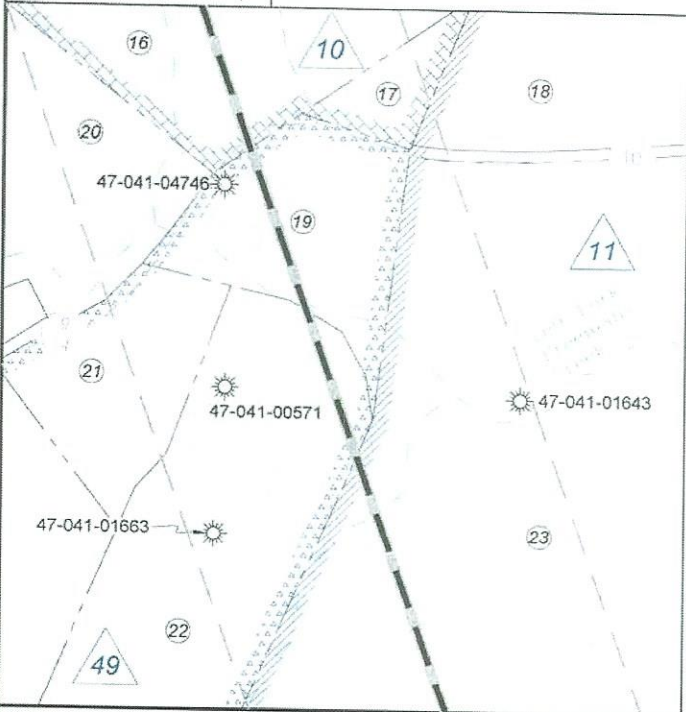
Detail 1 (Scale 1"=500')



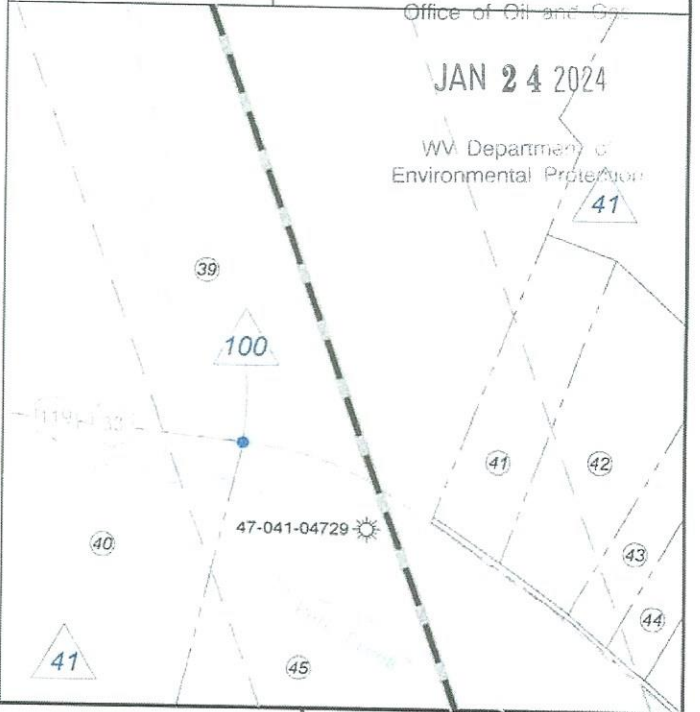
Detail 3 (Scale 1"=500')



Detail 2 (Scale 1"=500')



Detail 4 (Scale 1"=500')



FILE NO: 43-12-FC-21
DRAWING NO: Winans 1216 S-8H Well Plat
SCALE: 1" = 2000'
MINIMUM DEGREE OF ACCURACY:
Submeter
PROVEN SOURCE OF ELEVATION:
CORS, Bridgeport, WV

STATE OF WEST VIRGINIA
DEPARTMENT OF ENVIRONMENTAL PROTECTION
OIL AND GAS DIVISION

DATE: January 17, 2024
OPERATOR'S WELL NO. Winans 1216 S-8H
API WELL NO
47 - 041 - 05752
STATE COUNTY PERMIT

WELL TYPE: OIL GAS LIQUID INJECTION WASTE DISPOSAL
(IF GAS) PRODUCTION: STORAGE DEEP SHALLOW

LOCATION: ELEVATION: 1,394' WATERSHED: Fink Creek
DISTRICT: Freemans Creek
SURFACE OWNER: Stephen B. Winans
ROYALTY OWNER: Elaina D. Yanceris, et al, et al

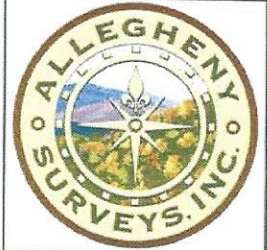
QUADRANGLE: Camden
COUNTY: Lewis
ACREAGE: 45.00
LEASE NO: _____ ACREAGE: 123

PROPOSED WORK: DRILL CONVERT DRILL DEEPER FRACTURE OR STIMULATE PLUG OFF OLD FORMATION
 PERFORATE NEW FORMATION OTHER PHYSICAL CHANGE IN WELL (SPECIFY) Bottom Hole MOD
 PLUG AND ABANDON CLEAN OUT AND REPLUG TARGET FORMATION: Marcellus Shale ESTIMATED DEPTH: 32,726' MD

WELL OPERATOR: HG Energy II Appalachia, LLC
ADDRESS: 5260 Dupont Road
Parkersburg, WV 26101

DESIGNATED AGENT: Diane C. White
ADDRESS: 5260 Dupont Road
Parkersburg, WV 26101

02/02/2024



Lewis Co. (Freemans Creek Dist.)

No.	TM / Par	Owner	Bk / Pg	Ac.
1	4C / 31	Gerald P. Hull	W18 / 661	199.25
2	4C / 22	Robert & Brenda McKinley, et al	540 / 137	74.00
3	4C / 21	Stephen B. Winans	630 / 50	45.00
4	4D / 47.2	Stephen B. Winans	630 / 50	5.17
5	5D / 64	Kenneth & Carol Goldsmith	639 / 497	10.00
6	4D / 46	Stephen B. Winans	630 / 50	43.00
7	4D / 47.1	Chad E. & Tammy L. Herron	612 / 459 & 461	31.15
8	5D / 65	Daniel C. Winans	630 / 26	1.52
9	4D / 46.1	Stephen B. & Barbara Winans	647 / 254	1.38
10	5D / 1.1	Jerry M. & Amanda Young	635 / 551	2.00
11	4D / 47	William D. & Velva J. Blake	348 / 712	1.33
12	5D / 1	Staci D. Blake	663 / 214	8.50
13	4D / 48	Stephen B. Winans, II	701 / 152	15.30
14	5D / 2	William K. Donaldson	W33 / 122	50.70
15	4D / 50	Stephen B. Winans, II	681 / 275	13.24
16	5D / 3	William K. Donaldson	W33 / 122	83.74
17	5D / 4	Sharon A. Harper Hull	W18 / 661	1.83
18	5D / 6	Gerald P. Hull	W18 / 661	16.93
19	5D / 6	Gerald P. & Mary Jo Hull	359 / 101	6.20
20	4D / 52	Sharon A. Harper Hull	W18 / 661	42.06
21	5D / 7	Gerald P. Hull	499 / 316	5.52
22	5D / 8	Gerald P. Hull	408 / 30	12.80
23	5D / 6.1	Gerald P. Hull	W18 / 661	68.22
24	5D / 9	Gerald P. Hull	499 / 316	40.48
25	5D / 11	Gerald P. Hull	W18 / 661	78.80
26	5E / 41	Daniel E. Fisher & Sue E. Hall	W34 / 597	5.20
27	5D / 28	Daniel E. Fisher & Sue E. Hall	W34 / 597	148.50
28	5E / 2.2	Richard A. & Robert E. White	725 / 348	102.90
29	5E / 2	Charles E. White, et al	725 / 344	102.90
30	5E / 1	Edwin A. & Ann K. Linger	315 / 369	412.38
31	5E / 4	David L. White & Elizabeth A. Porter	722 / 759	91.77
32	5E / 10	Lewis L. Linger, II	445 / 390	57.24
33	5E / 4.2	Timothy D. Rinehart	736 / 216	21.01
34	5E / 4.3	Timothy D. Rinehart	738 / 33	1.44
35	5E / 5	Roger L. & Coleen M. Myers Civil Action 18-C 21	519 / 36	1.23
36	5E / 6	Rodger L. & Coleen M. Myers	519 / 36	158.75
37	5E / 9	Lewis L. Linger, II	445 / 390	30.00
38	5E / 7	William C. Lovett Trust, et al	566 / 689	18.00
39	5F / 16	Sharon M. & Allen D. Marple	497 / 36	128.22
40	5F / 16.6	Sharon K. Summers Williams	W22 / 383	22.26
41	5F / 17	Stephen & Natalie DeBrular	771 / 208	3.95
42	5F / 18	Michael E. Taylor	565 / 345	5.64
43	5F / 16.1	Thomas E. Quinn	726 / 33	2.43
44	5F / 16.3	Adolfo M. & Brenda J. Rivera	551 / 56	2.52
45	5F / 16.4	Stephen L. Debrular	572 / 545	122.69
46	5F / 22.1	Lesa M. & Walter Jordan, II	781 / 540	5.07
47	5F / 22	Lesa M. & Walter Jordan, II	663 / 331	137.18
48	5F / 10	Arthur B. & Tercia A. Alton	482 / 716	28.00

RECEIVED
Office of Oil and Gas

JAN 24 2024

WV Department of
Environmental Protection

ID	Lease
7	Boyd Gum, et ux
8	William & Mary Winans
9	W.F. Snyder, et al
10	Kenneth T. Hall, et ux
11	Doris E. Simmons
12	J.G. White, et ux, et al
13	Georgia E. Hall, et vir, et al
14	G.L. White, et ux
16	H.G. Energy II Appalachia, LLC
31	J.T. Lovett
40	Ann L. Robb, et al
41	S.D. Camden, et al
49	Harold L. Hull, et ux, et al
52	Robert T. Harrison, et ux
64	James Jarvis, et ux
100	WVDOH

FILE NO: 43-12-FC-21
DRAWING NO: Winans 1216 S-8H Well Plat
SCALE: 1" = 2000'
MINIMUM DEGREE OF ACCURACY:
Submeter
PROVEN SOURCE OF ELEVATION:
CORS, Bridgeport, WV

STATE OF WEST VIRGINIA
DEPARTMENT OF ENVIRONMENTAL PROTECTION
OIL AND GAS DIVISION

DATE: January 17 2024
OPERATOR'S WELL NO. Winans 1216 S-8H
API WELL NO
47 - 041 - 05752
STATE COUNTY PERMIT

WELL TYPE: OIL GAS LIQUID INJECTION WASTE DISPOSAL
(IF GAS) PRODUCTION: STORAGE DEEP SHALLOW

LOCATION: ELEVATION: 1,394' WATERSHED: Fink Creek
DISTRICT: Freemans Creek
SURFACE OWNER: Stephen B. Winans
ROYALTY OWNER: Elaina D. Yanceris, et al, et al

QUADRANGLE: Camden
COUNTY: Lewis
ACREAGE: 45.00
ACREAGE: 123

PROPOSED WORK: DRILL CONVERT DRILL DEEPER FRACTURE OR STIMULATE PLUG OFF OLD FORMATION
 PERFORATE NEW FORMATION OTHER PHYSICAL CHANGE IN WELL (SPECIFY) Bottom Hole MOD
 PLUG AND ABANDON CLEAN OUT AND REPLUG TARGET FORMATION: Marcellus Shale ESTIMATED DEPTH: 32,726' MD

WELL OPERATOR: HG Energy II Appalachia, LLC
ADDRESS: 5260 Dupont Road
Parkersburg, WV 26101

DESIGNATED AGENT: Diane C. White
ADDRESS: 5260 Dupont Road
Parkersburg, WV 26101

**INFORMATION SUPPLIED UNDER WEST VIRGINIA CODE
Chapter 22, Article 6A, Section 5(a)(5)
IN LIEU OF FILING LEASE(S) AND OTHER CONTINUING CONTRACT(S)**

Under the oath required to make the verification on page 1 of this Notice and Application, I depose and say that I am the person who signed the Notice and Application for the Applicant, and that –

- (1) the tract of land is the same tract described in this Application, partly or wholly depicted in the accompanying plat, and described in the Construction and Reclamation Plan;
- (2) the parties and recordation data (if recorded) for lease(s) or other continuing contract(s) by which the Applicant claims the right to extract, produce or market the oil or gas are as follows:

Lease Name or Number	Grantor, Lessor, etc.	Grantee, Lessee, etc.	Royalty	Book/Page
----------------------	-----------------------	-----------------------	---------	-----------

****See Attached Sheets****

RECEIVED
Office of Oil and Gas
JAN 24 2024
WV Department of
Environmental Protection

Co-Tenancy utilization - At least 75% of the royalty owners have consented to the lawful use or development of the natural gas mineral property on the tract. The interests of the remaining co-tenants will be secured pursuant to the Co-Tenancy Act
 Horizontal Well Unit Utilization - Subject to unitization filing with the WV Oil and Gas Conservation Commission

**Acknowledgement of Possible Permitting/Approval
In Addition to the Office of Oil and Gas**

The permit applicant for the proposed well work addressed in this application hereby acknowledges the possibility of the need for permits and/or approvals from local, state, or federal entities in addition to the DEP, Office of Oil and Gas, including but not limited to the following:

- WV Division of Water and Waste Management
- WV Division of Natural Resources WV Division of Highways
- U.S. Army Corps of Engineers
- U.S. Fish and Wildlife Service
- County Floodplain Coordinator

The applicant further acknowledges that any Office of Oil and Gas permit in no way overrides, replaces, or nullifies the need for other permits/approvals that may be necessary and further affirms that all needed permits/approvals should be acquired from the appropriate authority before the affected activity is initiated.

Well Operator: HG Energy II Appalachia, LLC
 By: Diane White *Diane White*
 Its: Accountant

HG Energy II Appalachia, LLC - Winans 1216 S-8H Lease Chains

02/02/2024

1216s Tract	LEGACY LEASE NUMBER	TAX MAP	LEASE NUMBER	GRANTOR/LESSOR	GRANTEE/LESSEE	ROYALTY	DEED BOOK	PAGE
7	FK053212	03-004C-0031-0000	Q100386000	BOYD GUM AND MARY M. GUM, HIS WIFE	RESERVE GAS COMPANY	NOT LESS THAN 1/8	58	474
				RESERVE GAS COMPANY	HOPE NATURAL GAS COMPANY	DEED	155	202
				HOPE NATURAL GAS COMPANY	CONSOLIDATED GAS SUPPLY CORPORATION	CONFIRMATORY DEED	294	89
				CONSOLIDATED GAS SUPPLY CORPORATION	CONSOLIDATED GAS TRANSMISSION CORPORATION	ASSIGNMENT	425	127
				CNG TRANSMISSION CORPORATION	CNG TRANSMISSION CORPORATION	MERGER/NAME CHANGE	51	795
				DOMINION TRANSMISSION, INC.	DOMINION TRANSMISSION, INC.	MERGER/NAME CHANGE	58	362
				CNX GAS COMPANY LLC	CNX GAS COMPANY LLC	MEMORANDUM OF FARMOUT AGREEMENT	672	154
				DOMINION TRANSMISSION, INC.	NOBLE ENERGY, INC.	LIMITED PARTIAL ASSIGNMENT (50%)	684	57
				DOMINION TRANSMISSION, INC.	CNX GAS COMPANY LLC AND NOBLE ENERGY, INC.	PARTIAL ASSIGNMENT (32%)	712	848
				NOBLE ENERGY, INC.	HG ENERGY II APPALACHIA, LLC	ASSIGNMENT	717	1
				DOMINION TRANSMISSION, INC.	DOMINION ENERGY TRANSMISSION, INC.	ASSIGNMENT	722	170
				DOMINION ENERGY TRANSMISSION, INC.	HG ENERGY II APPALACHIA, LLC	MERGER/NAME CHANGE	WVSOS	
				DOMINION ENERGY TRANSMISSION, INC.	HG ENERGY II APPALACHIA, LLC	SECOND AMENDMENT TO MEMORANDUM OF FARMOUT AGREEMENT	723	499
				DOMINION ENERGY TRANSMISSION, INC.	HG ENERGY II APPALACHIA, LLC	THIRD AMENDMENT TO MEMORANDUM OF FARMOUT AGREEMENT	734	558
8	FK053100	03-004C-0021-0000 03-004D-0046-0000 03-004D-0046-0001 03-004D-0047-0000 03-004D-0047-0001 03-004D-0047-0002 03-005D-0064-0000 03-005D-0065-0000	Q100670000	WV Department of Environmental Protection	RESERVE GAS COMPANY	NOT LESS THAN 1/8	35	435
				J. I. WARDER	THE HENRY OIL AND GAS COMPANY	ASSIGNMENT	35	435
				T. N. BARNSDALL, THE SOUTHERN OIL COMPANY, FRED S. RICH AND W. S. MOWRIS	RESERVE GAS COMPANY	ASSIGNMENT	46	153
				RESERVE GAS COMPANY	HOPE NATURAL GAS COMPANY	ASSIGNMENT	85	106
				HOPE NATURAL GAS COMPANY	CONSOLIDATED GAS SUPPLY CORPORATION	DEED	155	202
				CONSOLIDATED GAS SUPPLY CORPORATION	CONSOLIDATED GAS TRANSMISSION CORPORATION	CONFIRMATORY DEED	294	89
				CNG TRANSMISSION CORPORATION	CNG TRANSMISSION CORPORATION	ASSIGNMENT	425	127
				DOMINION TRANSMISSION, INC.	DOMINION TRANSMISSION, INC.	MERGER/NAME CHANGE	51	795
				DOMINION TRANSMISSION, INC.	DOMINION TRANSMISSION, INC.	MERGER/NAME CHANGE	9	628
				CNX GAS COMPANY LLC	NOBLE ENERGY, INC.	MEMORANDUM OF FARMOUT AGREEMENT	672	154
				DOMINION TRANSMISSION, INC.	CNX GAS COMPANY LLC AND NOBLE ENERGY, INC.	LIMITED PARTIAL ASSIGNMENT (50%)	684	57
				CNX GAS COMPANY LLC	NOBLE ENERGY, INC.	PARTIAL ASSIGNMENT (32%)	712	848
				NOBLE ENERGY, INC.	HG ENERGY II APPALACHIA, LLC	ASSIGNMENT	717	1
				DOMINION TRANSMISSION, INC.	DOMINION ENERGY TRANSMISSION, INC.	ASSIGNMENT	722	170
DOMINION ENERGY TRANSMISSION, INC.	HG ENERGY II APPALACHIA, LLC	MERGER/NAME CHANGE	WVSOS					
DOMINION ENERGY TRANSMISSION, INC.	HG ENERGY II APPALACHIA, LLC	SECOND AMENDMENT TO MEMORANDUM OF FARMOUT AGREEMENT	723	499				
DOMINION ENERGY TRANSMISSION, INC.	HG ENERGY II APPALACHIA, LLC	THIRD AMENDMENT TO MEMORANDUM OF FARMOUT AGREEMENT	734	558				
9	MKA2	03-004D-0048-0000 03-004D-0050-0000 03-004D-0050-0001 03-005D-0001-0000 03-005D-0001-0001	MKA2	W. F. SNYDER, G. R. SNYDER, MYRTLE S. SNYDER, AND KENNETH T. HALL & MARY K. HALL	MACDONALD SPIDEL	NOT LESS THAN 1/8	306	81
				MACDONALD SPIDEL AND JUDY SPIDEL, HIS WIFE	UNION DRILLING INC	ASSIGNMENT	310	99
				UNION DRILLING INC	EQUITABLE RESOURCES EXPLORATION INC	ASSIGNMENT	467	552
				EQUITABLE RESOURCES EXPLORATION INC	EQUITABLE RESOURCES ENERGY COMPANY	ASSIGNMENT	477	471
				EQUITABLE RESOURCES ENERGY COMPANY	ENERVEST EAST LIMITED PARTNERSHIP	ASSIGNMENT	530	666

		03-005D-0002-0000 03-005D-0014-0000		ENERVEST EAST LIMITED PARTNERSHIP THE HOUSTON EXPLORATION COMPANY SENECA-UPSHUR PETROLEUM INC SENECA-UPSHUR PETROLEUM LLC ET AL KENNETH T. HALL & MARY K. HALL, HIS WIFE MACDONALD SPIDEL AND JUDY SPIDEL, HIS WIFE UNION DRILLING INC EQUITABLE RESOURCES EXPLORATION INC EQUITABLE RESOURCES ENERGY COMPANY ENERVEST EAST LIMITED PARTNERSHIP THE HOUSTON EXPLORATION COMPANY SENECA-UPSHUR PETROLEUM INC SENECA-UPSHUR PETROLEUM LLC ET AL	THE HOUSTON EXPLORATION COMPANY SENECA-UPSHUR PETROLEUM INC SENECA-UPSHUR PETROLEUM LLC HG ENERGY II APPALACHIA, LLC MACDONALD SPIDEL UNION DRILLING INC EQUITABLE RESOURCES EXPLORATION INC EQUITABLE RESOURCES ENERGY COMPANY ENERVEST EAST LIMITED PARTNERSHIP THE HOUSTON EXPLORATION COMPANY SENECA-UPSHUR PETROLEUM INC SENECA-UPSHUR PETROLEUM LLC HG ENERGY II APPALACHIA, LLC	ASSIGNMENT ASSIGNMENT CONFIRMATORY DEED ASSIGNMENT NOT LESS THAN 1/8 ASSIGNMENT ASSIGNMENT ASSIGNMENT ASSIGNMENT ASSIGNMENT CONFIRMATORY DEED ASSIGNMENT	586 592 654 729 306 310 467 477 530 586 592 654 729	271 339 653 74 83 99 552 471 666 271 339 653 74	
10	MKA1	03-005D-0003-0000 03-005D-0003-0001 03-005D-0004-0000	MKA1						
49	DECI	03-004D-0054-0000 03-005D-0005-0000 03-005D-0007-0000 03-005D-0008-0000	DECI	HAROLD L. HULL AND HIS WIFE, LOUISE HULL; VIRGIL HULL AND HIS WIFE, RUTH HULL; JUANITA IMBODEN AND HER HUSBAND, JOHN IMBODEN; VIRGINIA MATHENY AND HER HUSBAND, EDWARD MATHENY; EDWARD C. HULL AND HIS WIFE, ERMA HULL; EVA MAY CRIBBS AND HUSBAND, CRAIG CRIBBS; MARY E. MAZZIE, SINGLE DONALD CAYTON DAVID A. DORWARD VIRGINIA M. DORWARD DAVID A. DORWARD JR AND CAROL WISEMILLER GOLF-DEG Royalty Management LLC DORIS E. SIMMONS, SINGLE A. T. SIMMONS, TRUSTEE FOR DORIS SIMMONS ALLEGHENY LAND AND MINERAL COMPANY, A WEST VIRGINIA CORPORATION ALLEGHENY LAND AND MINERAL COMPANY ALAMCO, INC COLUMBIA NATURAL RESOURCES, LLC CHESAPEAKE APPALACHIA LLC CHESAPEAKE APPALACHIA LLC AND WINTER MOON ENERGY CORPORATION STATOILHYDRO USA ONSHORE PROPERTIES INC SWN EXCHANGE TITLEHOLDER LLC SWN PRODUCTION COMPANY LLC & EQUIJNOR USA ONSHORE PROPERTIES INC. J. G. WHITE AND MABEL F. WHITE, HIS WIFE; O.E. WHITE AND MAUDE WHITE, HIS WIFE J. FRANK HOFFMAN AND A. E. CAVENDER	D. B. CAYTON D. A. DORWARD VIRGINIA M. DORWARD DAVID A. DORWARD JR. AND CAROL WISEMILLER DORWARD ENERGY CORPORATION HG ENERGY II APPALACHIA, LLC ALLEGHENY LAND AND MINERAL COMPANY ALLEGHENY LAND AND MINERAL COMPANY ALLEGHENY LAND AND MINERAL COMPANY, A DELAWARE CORPORATION ALAMCO, INC COLUMBIA NATURAL RESOURCES INC CHESAPEAKE APPALACHIA LLC STATOILHYDRO USA ONSHORE PROPERTIES INC SWN PRODUCTION COMPANY LLC SWN EXCHANGE TITLEHOLDER LLC SWN PRODUCTION COMPANY LLC HG ENERGY II APPALACHIA, LLC	NOT LESS THAN 1/8 ASSIGNMENT WILL ASSIGNMENT ASSIGNMENT NOT LESS THAN 1/8 NOT LESS THAN 1/8 CONFIRMATORY DEED MERGER/NAME CHANGE CONFIRMATORY DEED CONFIRMATORY DEED ASSIGNMENT ASSIGNMENT ASSIGNMENT	310 311 6 616 799 258 260 401 554 603 632 684 687 9	53 171 230 741 121 687 29 538 184 285 50 333 407 637	
11	DECI	03-005D-0006-0000 03-005D-0006-0001	DECI						
12	SGC-2	03-005D-0011-0000 03-005E-0041-0000	SGC-2	BLUE CREEK GAS COMPANY; JOE RUBIN, JUDY RUBIN, SAM RUBIN, STANLEY RUBIN, DANIEL RUBIN, THE FLAT TOP NATIONAL BANK, TRUSTEES UNDER THE WILL OF RACHEL KANTOR, MARTIN GOLDMAN, ELA POLAN, EILEEN STOCK, ARTHUR A. KAPLAN, EUNICE KREBS, JOSEPH KALTENBACHER, NORRIS KANTOR, CARON LOPINSKY, MINNIE LOWY, MARGERY POLAN, STANLEY POLAN, FREIDA RIVITZ, BEN SHERMAN, SHERWIN STEIGER, ELLEN WOLF, LESTER SCHACHTER, PHILIP HOFFMAN, AND HUBERY M. GOLDMAN – MEMBERS OF JOINT VENTURE – MABLE WHITE WELLS NOS. 1 AND 2 STEPHEN GAS COMPANY PETROLEUM RESOURCES INC		ASSIGNMENT ASSIGNMENT	484 584	74 132	

02/02/2024

SWN#	DATE	DESCRIPTION	ASSIGNMENT	DATE	ASSIGNMENT	DATE	ASSIGNMENT	DATE	ASSIGNMENT
SWN738764-000	03-005D-0028-0000	SWN738764-000	STEPHEN GAS COMPANY	PETROLEUM RESOURCES INC	ASSIGNMENT	592	101		
			STEPHEN DEBRULAR DBA STEPHEN GAS COMPANY	PETROLEUM RESOURCES INC	ASSIGNMENT	615	688		
			PETROLEUM RESOURCES INC	MBM INTERESTS INC	ASSIGNMENT	611	910		
			STEPHEN GAS COMPANY	HG ENERGY II APPALACHIA, LLC	ASSIGNMENT	8	543		
			MRS. GEORGIA E. HALL AND S. A. HALL, HER HUSBAND; LENA HUME AND EDGAR HUME, HER HUSBAND; GEORGE S. WHITE AND FLAVEL WHITE, HIS WIFE; J. D. WHITE AND MAMIE WHITE, HIS WIFE; ADA WHITE, SINGLE; MAURICE G. WHITE AND LYDIA L. WHITE, HIS WIFE; ALICE WILLIAMS WHITE GYGAX AND JOHN GYGAX, HER HUSBAND; CHARLES S. WHITE AND ALCYCE G. WHITE, HIS WIFE; JOHN HENSELL WHITE AND MARY SUSAN WHITE, HIS WIFE; AND MARTHA WHITE STRALL AND LESTER STRALL, HER HUSBAND						
			ALLEGHENY LAND & MINERAL COMPANY (WV)	ALLEGHENY LAND AND MINERAL COMPANY (DE)	NOT LESS THAN 1/8	259	652		
			ALLEGHENY LAND & MINERAL COMPANY	ALAMCO INC	CONFIRMATORY DEED	401	538		
			ALAMCO INC	COLUMBIA NATURAL RESOURCES INC	MERGER/NAME CHANGE	457	667		
			COLUMBIA NATURAL RESOURCES INC	COLUMBIA NATURAL RESOURCES INC	DEED	554	184		
			COLUMBIA NATURAL RESOURCES INC	COLUMBIA NATURAL RESOURCES INC	MERGER/NAME CHANGE	554	184		
			CHEESAPEAKE APPALACHIA LLC	CHEESAPEAKE APPALACHIA LLC	CONFIRMATORY DEED	603	285		
			CHEESAPEAKE APPALACHIA LLC	STATOILHYDRO USA ONSHORE PROPERTIES INC	PARTIAL ASSIGNMENT	632	50		
			STATOILHYDRO USA ONSHORE PROPERTIES INC	STATOIL USA ONSHORE PROPERTIES INC	MERGER/NAME CHANGE	632	50		
			CHEESAPEAKE APPALACHIA LLC AND WINTER MOON ENERGY CORPORATION	SWN PRODUCTION COMPANY LLC	ASSIGNMENT	684	333		
			STATOIL USA ONSHORE PROPERTIES INC	SWN PRODUCTION COMPANY LLC	ASSIGNMENT	687	407		
			SWN PRODUCTION COMPANY LLC & EQUINOR USA ONSHORE PROPERTIES INC.	SWN PRODUCTION COMPANY LLC	ASSIGNMENT	687	407		
			G. L. WHITE AND SUSAN A. WHITE, HIS WIFE	HG ENERGY II APPALACHIA, LLC	ASSIGNMENT	778	719		
			C. L. TOPPING	C. L. TOPPING	NOT LESS THAN 1/8	35	451		
			T.N. BARNSDALL, THE SOUTHERN OIL COMPANY, FRED S. RICH AND W. S. MOWRIS	FRED S. RICH	ASSIGNMENT	40	576		
			FRED S. RICH	PERRY G. ALFRED, FRANK WHELAN, JAS. A. TIERNY, MARK PERRY, AND L. F. BULLARD	ASSIGNMENT	46	88		
			C. L. TOPPING	THE RESERVE GAS COMPANY	ASSIGNMENT	85	106		
			L. F. BULLARD TOWER AND E. Z. TOWER, HER HUSBAND	THE RESERVE GAS COMPANY	ASSIGNMENT	46	189		
			MARK PERRY AND CATHERINE PERRY, HIS WIFE	FRANK WHELAN	ASSIGNMENT	52	45		
			PERRY G. ALFRED, JAMES A. TIERNY, AND FRANK WHELAN	FRANK WHELAN	ASSIGNMENT	52	46		
			SOUTHERN OIL COMPANY	THE RESERVE GAS COMPANY	ASSIGNMENT	52	194		
			RESERVE GAS COMPANY	PITTSBURG OIL & GAS COMPANY	DEED	141	435		
			PITTSBURG OIL & GAS COMPANY	HOPE NATURAL GAS COMPANY	CONFIRMATORY DEED	155	202		
			HOPE NATURAL GAS COMPANY	OHIO-WEST VIRGINIA OIL & GAS CO	DEED	207	29		
			OHIO-WEST VIRGINIA OIL & GAS CO	CONSOLIDATED GAS SUPPLY CORPORATION	CONFIRMATORY DEED	294	89		
			CNG PRODUCING COMPANY	CONSOLIDATED GAS SUPPLY CORPORATION	ASSIGNMENT	414	494		
			CNG DEVELOPMENT COMPANY	CNG PRODUCING COMPANY	ASSIGNMENT	420	408		
			CONSOLIDATED GAS SUPPLY CORPORATION	DOMINION EXPLORATION & PRODUCTION, INC.	MERGER/NAME CHANGE	425	127		
			CONSOLIDATED GAS TRANSMISSION CORPORATION	CONSOLIDATED GAS TRANSMISSION CORPORATION	ASSIGNMENT	425	127		
			CNG TRANSMISSION CORPORATION	CNG TRANSMISSION CORPORATION	MERGER/NAME CHANGE	622	628		
			DOMINION TRANSMISSION, INC.	DOMINION TRANSMISSION, INC.	MERGER/NAME CHANGE	622	701		
			DOMINION EXPLORATION & PRODUCTION INC	DOMINION EXPLORATION & PRODUCTION, INC.	ASSIGNMENT	651	137		
			DOMINION TRANSMISSION, INC.	DOMINION TRANSMISSION, INC.	ASSIGNMENT	651	137		
			CONSOL ENERGY HOLDINGS LLC XVI	CONSOL ENERGY HOLDINGS LLC XVI	ASSIGNMENT	651	318		
			CNX GAS COMPANY LLC	CNX GAS COMPANY LLC	MERGER/NAME CHANGE	9	471		
			ROBERT T. HARRISON AND SHEILA HARRISON, HIS WIFE	HG ENERGY II APPALACHIA, LLC	ASSIGNMENT	798	692		
			REVA J. HARRISON, WIDOW	DOMINION EXPLORATION & PRODUCTION, INC.	NOT LESS THAN 1/8	577	709		
			PERRY SCOTT KNEPPER	DOMINION EXPLORATION & PRODUCTION, INC.	NOT LESS THAN 1/8	577	704		
				DOMINION EXPLORATION & PRODUCTION, INC.	NOT LESS THAN 1/8	577	820		

RECEIVED
Office of Oil and Gas

JAN 24 2024
WV Department of Environmental Protection

02/02/2024

RECEIVED
Office of Oil and Gas
JAN 24 2024
WV Department of
Environmental Protection

✓52

L022857

03-005E-0001-0000

L022857

✓16

CNX052978 FEE

03-005E-0004-0000

CNX052978 FEE

✓31

CNX055465

03-005E-0006-0000

CNX055465

ALICE MAY BOOKOUT AND GARY D. BOOKOUT, HER HUSBAND	DOMINION EXPLORATION & PRODUCTION, INC.	NOT LESS THAN 1/8	577	825
ELIZABETH ANN FIKE AND J. ROGERS FIKE, HER HUSBAND	DOMINION EXPLORATION & PRODUCTION, INC.	NOT LESS THAN 1/8	577	830
JOHN P. HARRISON AND ANN HARRISON, HIS WIFE	DOMINION EXPLORATION & PRODUCTION, INC.	NOT LESS THAN 1/8	577	835
SABRA LEE DONNELL, UNMARRIED	DOMINION EXPLORATION & PRODUCTION, INC.	NOT LESS THAN 1/8	578	550
CONSTANCE W. FURLATE, WIDOW	DOMINION EXPLORATION & PRODUCTION, INC.	NOT LESS THAN 1/8	579	181
MARGARET H. SCHREIBER (MARRIED PERSON ACTING IN HER OWN RIGHT)	DOMINION EXPLORATION & PRODUCTION, INC.	NOT LESS THAN 1/8	579	186
SYLVIA DEBINION	DOMINION EXPLORATION & PRODUCTION, INC.	NOT LESS THAN 1/8	583	169
JEFFREY PHILIP WHITE, AN INDIVIDUAL DEALING IN THEIR SOLE AND SEPARATE PROPERTY	DOMINION EXPLORATION & PRODUCTION, INC.	NOT LESS THAN 1/8	585	341
ERICA W. CLARY, MARRIED AND DEALING IN HER SOLE AND SEPARATE PROPERTY	DOMINION EXPLORATION & PRODUCTION, INC.	NOT LESS THAN 1/8	592	294
FAITH E. ROBERTS, MARRIED AND DEALING IN HER SOLE AND SEPARATE PROPERTY	DOMINION EXPLORATION & PRODUCTION, INC.	NOT LESS THAN 1/8	595	429
LISA G. BLACKWELL, MARRIED AND ACTING IN HER SOLE AND SEPARATE PROPERTY	DOMINION EXPLORATION & PRODUCTION, INC.	NOT LESS THAN 1/8	595	434
LAURA K. TAYLOR, MARRIED AND ACTING IN HER SOLE AND SEPARATE PROPERTY	DOMINION EXPLORATION & PRODUCTION, INC.	NOT LESS THAN 1/8	595	439
VATHINEE SENIVONGS WHITE, WIDOW	DOMINION EXPLORATION & PRODUCTION, INC.	NOT LESS THAN 1/8	612	491
EVELYN H. WHITE, WIDOW	DOMINION EXPLORATION & PRODUCTION, INC.	NOT LESS THAN 1/8	613	208
DOMINION EXPLORATION & PRODUCTION INC	DOMINION TRANSMISSION, INC.	ASSIGNMENT	651	137
DOMINION TRANSMISSION, INC.	CONSOL ENERGY HOLDINGS LLC XVI	ASSIGNMENT	651	318
CONSOL ENERGY HOLDINGS LLC XVI	CNX GAS COMPANY LLC	MERGER/NAME CHANGE	659	471
CNX GAS COMPANY LLC	NOBLE ENERGY, INC.	PARTIAL ASSIGNMENT (50%)	717	521
NOBLE ENERGY, INC.	HG ENERGY II APPALACHIA, LLC	ASSIGNMENT	722	170
NOBLE ENERGY, INC.	HG ENERGY II APPALACHIA, LLC	MINERAL DEED	722	293
J. T. LOVETT	H.P. CAMDEN, S.B. STILES, R.G. STILES, J. W. KELLEY, B.B. SPILLMAN, E.G. DAVISSON, LOUIS BENNETT AND J. W. ROSS	NOT LESS THAN 1/8	30	582
R.G. STILES, S.B. STILES, J.W. KELLY, B.D. SPILLMAN, E.G. DAVISSON, LOUIS BENNETT, J.W. ROSS, AND H.P. CAMDEN	H.M. PRESTON, F.M. KNAPP AND W.S. HOSKINS	ASSIGNMENT	42	509
H.M. PRESTON, F.M. KNAPP, AND W.S. HOSKINS	COLUMBIAN CARBON COMPANY	ASSIGNMENT	52	332
COLUMBIAN CARBON COMPANY	T.F. KOBLEGARD AND T.A. WHELAN	ASSIGNMENT	116	566
T.A. WHELAN AND T.F. KOBLEGARD	LEWCO GAS COMPANY	ASSIGNMENT	126	570
LEWCO GAS COMPANY	MID-PENN OIL CO	ASSIGNMENT	125	440
MID-PENN OIL CO.	HOPE CONSTRUCTION AND REFINING COMPANY	ASSIGNMENT	134	390
HOPE CONSTRUCTION AND REFINING COMPANY	HOPE NATURAL GAS COMPANY	MERGER/NAME CHANGE	294	WVS05
HOPE NATURAL GAS COMPANY	CONSOLIDATED GAS SUPPLY CORPORATION	CONFIRMATORY DEED	294	89
CONSOLIDATED GAS SUPPLY CORPORATION	CONSOLIDATED GAS TRANSMISSION CORPORATION	ASSIGNMENT	425	127
CONSOLIDATED GAS TRANSMISSION CORPORATION	CNG TRANSMISSION CORPORATION	MERGER/NAME CHANGE	455	628
CNG TRANSMISSION CORPORATION	DOMINION TRANSMISSION, INC.	MERGER/NAME CHANGE	651	137
DOMINION EXPLORATION & PRODUCTION INC	DOMINION TRANSMISSION, INC.	ASSIGNMENT	651	318
DOMINION TRANSMISSION, INC.	CONSOL ENERGY HOLDINGS LLC XVI	ASSIGNMENT	651	318
CONSOL ENERGY HOLDINGS LLC XVI	CNX GAS COMPANY LLC	MERGER/NAME CHANGE	9	471
CNX GAS COMPANY LLC	NOBLE ENERGY, INC.	PARTIAL ASSIGNMENT (50%)	659	521
NOBLE ENERGY, INC.	NOBLE ENERGY, INC.	ASSIGNMENT	717	170
NOBLE ENERGY, INC.	HG ENERGY II APPALACHIA, LLC	ASSIGNMENT	722	170
Ann Lynett Robb, et al.	HG ENERGY II APPALACHIA, LLC	LEASE	800	249
William R. Lovett, Trustee under Trust for Scott P. Lovett	HG ENERGY II APPALACHIA, LLC	LEASE	793	795
William R. Lovett	HG ENERGY II APPALACHIA, LLC	LEASE	793	799
William R. Lovett, Trustee under Trust for William C. Lovett	HG ENERGY II APPALACHIA, LLC	LEASE	793	797
Mike Ross, Inc.	HG ENERGY II APPALACHIA, LLC	LEASE	795	229

02/02/2024



HG Energy, LLC
5260 Dupont Road
Parkersburg, WV 26101
(304) 420-1100 - Office
(304) 863-3172 - Fax

January 19, 2024

WV DEP
Division of Oil & Gas
Attn: Cragin Blevins
601 57th Street
Charleston, West Virginia 25304

*Chk # 42175
7500.00*

RE: Winans 1216 S-8H Drill Permit Revision Request – (47-041-05752)
Freemans Creek District, Lewis County
West Virginia

Dear Mr. Blevins -

Per our discussions, enclosed are revised forms (WW-6B, casing schematic, survey plat, mylar, AOR, WW6A-1) and a check for expedited service for the 1216 S-8H well work permit revision request. We ask the permit be modified to reflect the revised lateral.

Please let me know if you have any questions or require additional information. I can be reached at (304) 420-1119 or dwhite@hgenergyllc.com.

Very truly yours,

Diane White

Diane C. White

Enclosures

cc: Ken Greynolds – WV DEP State Inspector

RECEIVED
Office of Oil and Gas

JAN 24 2024

WV Department of
Environmental Protection

02/02/2024