



---

west virginia department of environmental protection

---

Office of Oil and Gas  
601 57<sup>th</sup> Street, S.E.  
Charleston, WV 25304  
(304) 926-0450  
fax: (304) 926-0452

Harold D. Ward, Cabinet Secretary  
[www.dep.wv.gov](http://www.dep.wv.gov)

Monday, April 1, 2024  
PERMIT MODIFICATION APPROVAL  
Horizontal 6A / New Drill

HG ENERGY II APPALACHIA, LLC  
5260 DUPONT ROAD

PARKERSBURG, WV 26101

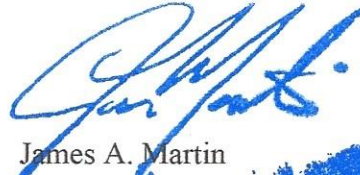
Re: Permit Modification Approval for Winans 1216 N-5H  
47-041-05744-00-00

**Lateral Extension**

HG ENERGY II APPALACHIA, LLC

The Office of Oil and Gas has reviewed the attached permit modification for the above referenced permit. The attached modification has been approved and well work may begin. Please be reminded that the oil and gas inspector is to be notified twenty-four (24) hours before permitted well work is commenced.

If there are any questions, please feel free to contact me at (304) 926- 0450.



James A. Martin  
Chief

Operator's Well Number: Winans 1216 N-5H  
Farm Name: HG ENERGY II APPALACHIA, LLC  
U.S. WELL NUMBER: 47-041-05744-00-00  
Horizontal 6A New Drill  
Date Modification Issued: 04/01/2024

Promoting a healthy environment.

04/05/2024

STATE OF WEST VIRGINIA  
DEPARTMENT OF ENVIRONMENTAL PROTECTION, OFFICE OF OIL AND GAS  
WELL WORK PERMIT APPLICATION

1) Well Operator: HG Energy II Appalachia, LLC 494519932 Lewis Freemans Camden 7.5'  
Operator ID County District Quadrangle

2) Operator's Well Number: Winans 1216 N-5H Well Pad Name: Winans 1216

3) Farm Name/Surface Owner: HG Energy II Appalachia, LLC Public Road Access: CR 10 @ Freemans Creek Road

4) Elevation, current ground: 1399' Elevation, proposed post-construction: 1394'

5) Well Type (a) Gas  Oil  Underground Storage   
Other

(b) If Gas Shallow  Deep   
Horizontal

6) Existing Pad: Yes or No No

7) Proposed Target Formation(s), Depth(s), Anticipated Thickness and Expected Pressure(s):  
Marcellus at 7127'/7200' and 73' in thickness. Anticipated pressure at 4314#.

8) Proposed Total Vertical Depth: 7,175'

9) Formation at Total Vertical Depth: Marcellus

10) Proposed Total Measured Depth: 32,774'

11) Proposed Horizontal Leg Length: 24,079'

12) Approximate Fresh Water Strata Depths: 214', 600', 861', 1306'

13) Method to Determine Fresh Water Depths: Nearest offset well data, (47-041-01754, 2174, 5732, 4411, 2629)

14) Approximate Saltwater Depths: 1605' (Vanek 1215)

15) Approximate Coal Seam Depths: 704', 865', 1214', 1285' (Surface casing is being extended to cover the coal in the DTI Field)

16) Approximate Depth to Possible Void (coal mine, karst, other): None

17) Does Proposed well location contain coal seams directly overlying or adjacent to an active mine? Yes  No

(a) If Yes, provide Mine Info: Name: \_\_\_\_\_  
Depth: \_\_\_\_\_  
Seam: \_\_\_\_\_  
Owner: \_\_\_\_\_

RECEIVED  
Office of Oil and Gas  
**MAR 18 2024**  
WV Department of  
Environmental Protection

4704105744

WW-6B  
(04/15)

API NO. 47-  
OPERATOR WELL NO. Winans 1216 N-5H  
Well Pad Name: Winans 1216

18)

CASING AND TUBING PROGRAM

TYPE	Size (in)	New or Used	Grade	Weight per ft. (lb/ft)	FOOTAGE: For Drilling (ft)	INTERVALS: Left in Well (ft)	CEMENT: Fill-up (Cu. Ft.)/CTS
Conductor	30"	New	LS	157.5	120'	120' ✓	Drilled In
Fresh Water/Coal	20"	NEW	J-55	94	1360'	1360' ✓	40% Excess, CTS ✓
Intermediate 1	13 3/8"	NEW	J-55 BTC	68	2480'	2480' ✓	40% Excess, CTS
Intermediate 2	9 5/8"	NEW	N/L-80 BTC	40	6125'	6125' ✓	40% Excess Tail, CTS
Production	5 1/2"	NEW	P-110 HP	23	32774'	32774' ✓	20% Excess Tail, CTS
Tubing							
Liners							

Kenneth Greynolds  
Digitally signed by: Kenneth Greynolds  
DN: CN = Kenneth Greynolds email = Kenneth.L.Greynolds@wv.gov C = AD O = WVDEP OU = Oil and Gas  
Date: 2024.03.13 14:28:43 -0400

TYPE	Size (in)	Wellbore Diameter (in)	Wall Thickness (in)	Burst Pressure (psi)	Anticipated Max. Internal Pressure (psi)	Cement Type	Cement Yield (cu. ft./k)
Conductor	30"	30"	.500				Drilled In
Fresh Water/Coal	20"	26"	.438	2110	1200	Type 1, Class A	40 % excess yield = 1.20, CTS
Intermediate 1	13 3/8"	17 1/2"	.480	3450		Type 1/Class A	Lead 40% excess, Tail 0% excess
Intermediate 2	9 5/8"	12 1/4"	.395	5750		Type 1/Class A	Lead 40% excess, Tail 0% Excess
Production	5 1/2"	8 1/2"	.415	16240	12500 ✓	Type 1/Class A	20% excess yield = 1.10, tail yield 1.54
Tubing							
Liners							

PACKERS

Kind:				
Sizes:				
Depths Set:				

RECEIVED  
Office of Oil and Gas

MAR 18 2024

WV Department of  
Environmental Protection

04/05/2024

19) Describe proposed well work, including the drilling and plugging back of any pilot hole:

Drill the vertical depth to the Marcellus at an estimated total vertical depth of approximately 7175'. Drill horizontal leg to estimated 24,079' lateral length, 32,774' TMD. Hydraulically fracture, stimulate and be capable of producing from the Marcellus Formation. Should we encounter an unanticipated void in the coal, we will install a minimum of 20' of casing below the void but not more than 100' below the void, set a basket and grout to surface. We plan to run an ACP above the Gantz/Dominion Storage interval to aid in sealing off and isolating the storage interval.

20) Describe fracturing/stimulating methods in detail, including anticipated max pressure and max rate:

The stimulation will be completed with multiple stages divided over the lateral length of the well. Stage spacing is dependent upon engineering design. Slickwater fracturing technique will be utilized on each stage using sand, water, and chemicals. See attached list. Maximum pressure not to exceed 12,500 psi.

21) Total Area to be disturbed, including roads, stockpile area, pits, etc., (acres): 30.31 acres

22) Area to be disturbed for well pad only, less access road (acres): 9.74 acres

23) Describe centralizer placement for each casing string:

No centralizers will be used with conductor casing.  
Freshwater/Coal - centralized every 3 joints to surface.  
Intermediate 1 - Bow Spring on every joint, will also be running ACP for isolating storage zone  
Intermediate 2 - Bow Spring on first 2 joints then every third joint to 100' from surface.  
Production - Vertical - Run 1 spiral centralizer every 5 joints from the top of the curve to surface, Curve - Run 1 spiral centralizer every 3 joints from the 1st 5.5' long joint to the top of the curve.

24) Describe all cement additives associated with each cement type:

Conductor -N/A, Casing to be drilled in w/ Dual Rotary Rig.  
Fresh Water/Coal - "15.6 ppg PNE-1 + 3% bwoc CaCl40% Excess/Yield=1.20 / CTS"  
Intermediate 1 - "" Storage String "" CTS ""15.4 ppg Lead - Yield 1.24 - D896 Surface Set: 100 lb / sack (Mix of Class A and Gypsum to meet Dominion Requirements)B348 - 0.5% BWOB Fluid Loss / D013 - 0.75% BWOB Retarder / D47 - 0.02 gal / sack V3WOB Anti Foam / D202 - 0.15% BWOB Dispersant / D095 1.5 lb per BBL CemNET - 60% Excess/15.9 ppg Tail - Yield 1.17 - D896 Surface Set: 100 lb / sack (Mix of Class A and Gypsum to meet Dominion Requirements)B160A - 0.15% BWOB Dispersant / B547 - 0.35% BWOB GasBLOK / D013 - 0.3% BWOB Retarder / D047 - 0.02 gal / sack Anti Foam / D601 - 0.03 gal / sack Retarder - 0% Excess"  
Intermediate 2 - "Lead: 15.4 ppg PNE-1 + 2.5% bwoc CaCl40% Excess / Tail: 15.9 ppg PNE-1 + 2.5% bwoc CaCl zero% Excess. CTS"  
Production - "Lead: 14.5 ppg POZ-PNE-1 + 0.3% bwoc R3 + 1% bwoc EC1 + 0.75 gal/sk FP13L + 0.3% bwoc MPA170Tail: 14.8 ppg PNE-1 + 0.35% bwoc R3 + 0.75 gal/sk FP13L + 50% bwoc ASCA1 + 0.5% bwoc MPA17020% Excess/Lead Yield=1.19Tail Yield=1.94CTS"

25) Proposed borehole conditioning procedures:

Conductor - Ensure the hole is clean at TD.  
Fresh Water/Coal - Once casing is at setting depth, circulate a minimum of one hole volume with Fresh Water prior to pumping cement.  
Intermediate 1 - Once casing is at setting depth, Circulate and condition at TD. Circulate a minimum of one hole volume prior to pumping cement.  
Intermediate 2 - Once casing is at setting depth, Circulate and condition mud at TD. Circulate a minimum of one hole volume prior to pumping cement.  
Production - Once on bottom/TD with casing, circulate at max allowable pump rate for at least 2x bottoms up, or until returns and pump pressures indicate the hole is clean. Circulate a minimum of one hole volume prior to pumping cement.

RECEIVED  
Office of Oil and Gas  
MAR 18 2024

\*Note: Attach additional sheets as needed.

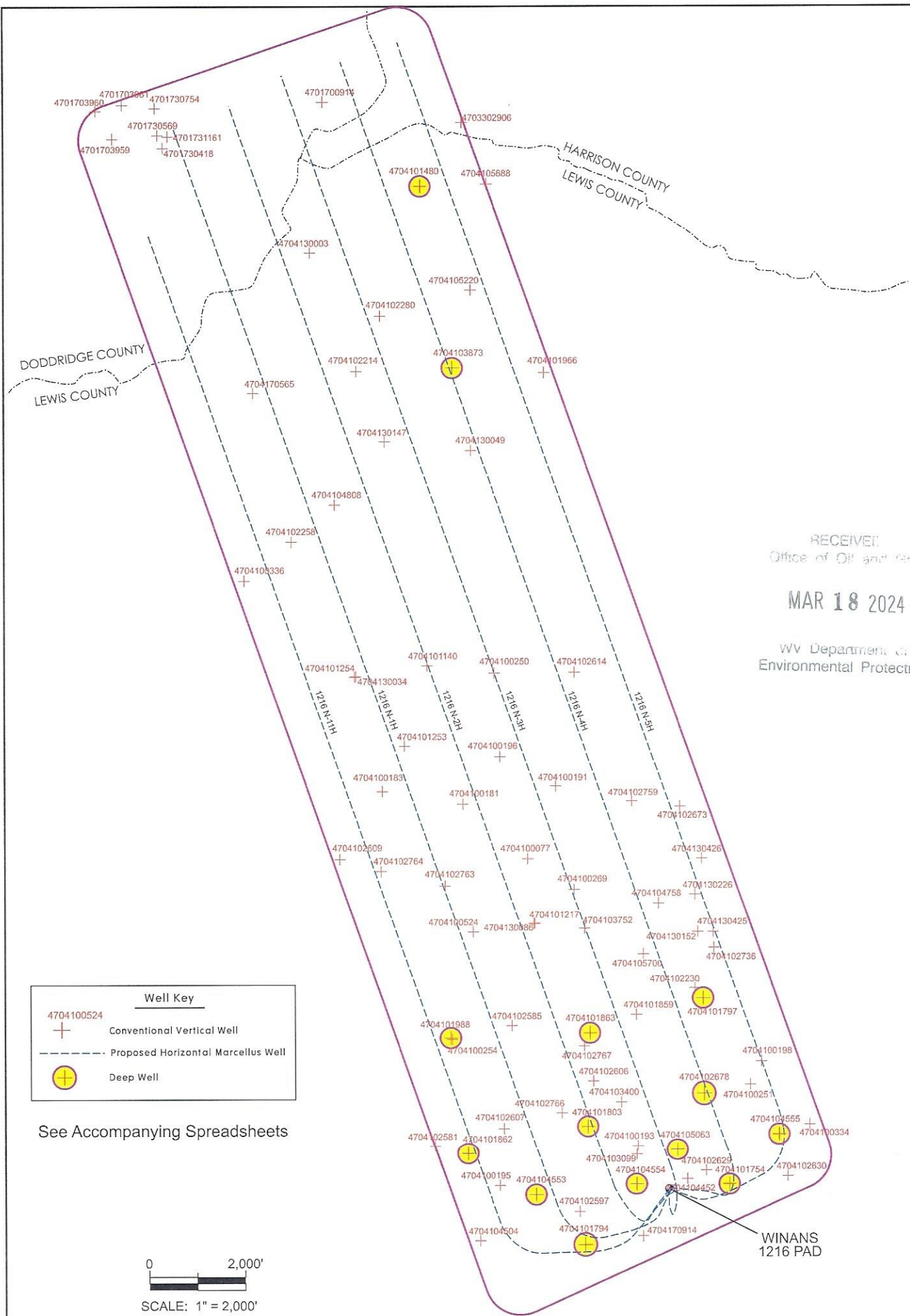


**1216 N-5H**  
**Marcellus Shale Horizontal**  
**Lewis County, WV**

\*\*\* Storage String \*\*\* CTS \*\*\*  
15.4 ppg Lead - Yield 1.24 - D896 Surface Set 100 lb / sack (Mix of Class A and Gypsum to meet Dominion Requirements)  
B348 - 0.5% BWOB Fluid Loss / D013 - 0.75% BWOB Retarder / D47 - 0.02 gal / sack BWOB Anti Foam / D202 - 0.15% BWOB  
Dispersant / D095 1.5 lb per BBL CemNET\* - 60% Excess  
15.9 ppg Tail - Yield 1.17 - D896 Surface Set 100 lb / sack (Mix of Class A and Gypsum to meet Dominion Requirements)  
B160A - 0.15% BWOB Dispersant / B647 - 0.35% BWOB GasBLOK\* / D013 - 0.3% BWOB Retarder / D047 - 0.02 gal / sack Anti Foam /  
D801 - 0.03 gal / sack Retarder - 0% Excess

Ground Elevation		1216 N-5H SHL		1216 N-5H LP		1216 N-5H BHL		1216 N-5H SHL		1216 N-5H LP		1216 N-5H BHL	
Azim		1394'		340.479°		340.479°		1394'		340.479°		340.479°	
WELLBORE DIAGRAM	HOLE	CASING	GEOLOGY	TOP	BASE	MUDD	CEMENT	CENTRALIZERS	CONDITIONING	COMMENTS			
	30"	30" 157.5# LS	Conductor	0	120	AIR	N/A, Casing to be drilled in w/ Dual Rotary Rig	N/A	Ensure the hole is clean at TD.	Conductor casing = 0.5" wall thickness			
	26"	20" 94# J-55	Fresh Water	0	214, 600, 861, 1306	AIR	15.6 ppg PNE-1 + 3% bwoc CaCl 40% Excess Yield=1.20 / CTS	Centralized every 3 joints to surface	Once casing is at setting depth, circulate a minimum of one hole volume with Fresh Water prior to pumping cement.	Surface casing = 0.438" wall thickness Burst=2110 psi			
			Coals	650, 800, 1414	654, 802, 1417								
	17.5"	13-3/8" 68# J-55 BTC	Fresh Water Protection	0	1360	AIR / KCL - Salt Polymer	See above (LEFT) for Storage String Cement Blend to Meet DDTI Requirements for Gas Storage Field Isolation	Bow Spring on every joint <i>*will also be running ACP for isolating storage zone*</i>	Once casing is at setting depth, Circulate and condition at TD. Circulate a minimum of one hole volume prior to pumping cement.	Intermediate casing = 0.480" wall thickness Burst=3450 psi			
			Little Lime	1927	1942								
			Big Lime	1980	2036								
	12.25"	9-5/8" 40# N / L-80 BTC	Intermediate 1	0	2480	AIR / KCL - Salt Polymer	Lead: 15.4 ppg PNE-1 + 2.5% bwoc CaCl 40% Excess / Tail: 15.9 ppg PNE-1 + 2.5% bwoc CaCl zero% Excess. CTS	Bow Spring on first 2 joints then every third joint to 100' form surface	Once casing is at setting depth, Circulate and condition mud at TD. Circulate a minimum of one hole volume prior to pumping cement.	Intermediate casing = 0.395" wall thickness Burst=5750 psi			
			Thirty Foot	2519	2531								
			Gordon	2594	2640								
			5th Sand	2818	2850								
Bayard			2884	2900									
8.75"	5-1/2" 23# P-110 HP TXP / W461	Intermediate 2	0	TVD: 5900' MD: 6125' Inc: 37 deg.	AIR / 9.0ppg SOBMM	Run 1 spiral centralizer every 5 joints from the top of the curve to surface.  Lead: 14.5 ppg POZ:PNE-1 + 0.3% bwoc R3 + 1% bwoc EC1 + 0.75 gal/sk FP13L + 0.3% bwoc MPA170 Tail: 14.8 ppg PNE-1 + 0.35% bwoc R3 + 0.75 gal/sk FP13L + 50% bwoc ASCA1 + 0.5% bwoc MPA170 20% Excess Lead Yield=1.19 Tail Yield=1.94 CTS	Run 1 spiral centralizer every 3 joints from the top of the curve.	Once on bottom/TD with department of casing, circulate at maximum allowable pump rate for at least 2x bottoms up, or until returns and pump pressures indicate the hole is clean. Circulate a minimum of one hole volume prior to pumping cement.	Office of Oil and Gas MAR 18 2024 RECEIVED				
		Rhinestreet	6270	6504									
		Cashaqua	6504	6758									
		Middlesex	6758	6837									
		West River	6837	6937									
8.5" Lateral	8.5" Curve	Burkett	6937	6962	11.5ppg-12.5ppg SOBMM	Run 1 spiral centralizer every 3 joints from the 1st 5.5" long joint to the top of the curve.	Once on bottom/TD with department of casing, circulate at maximum allowable pump rate for at least 2x bottoms up, or until returns and pump pressures indicate the hole is clean. Circulate a minimum of one hole volume prior to pumping cement.	Note: Actual centralizer schedules may be changed due to hole conditions					
		Tully Limestone	6962	7054									
		Hamilton	7054	6753									
		Marcellus	7127	7200									
		TMD / TVD (Production)	32773	7175									
Onondaga	7200												

LP @ 7175' TVD / 8694' MD  
8.5" Hole - Cemented Long String  
5-1/2" 23# P-110 HP TXP / W461  
+/-24079 ft Lateral  
TD @ +/-7175' TVD  
+/-32773' MD

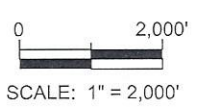


RECEIVED  
Office of Oil and Gas  
**MAR 18 2024**  
WV Department of  
Environmental Protection

**Well Key**

- 4704100524  
+ Conventional Vertical Well
- - - Proposed Horizontal Marcellus Well
- ⊕ Deep Well

See Accompanying Spreadsheets



DATA SOURCES  
WVGES Data Set - 2020; WVDEP Website

Area of Review for:

### WINANS 1216 NORTH UNIT

- Proposed 1216 N-1H
- Proposed 1216 N-2H
- Proposed 1216 N-3H
- Proposed 1216 N-4H
- Proposed 1216 N-5H
- Proposed 1216 N-11H

Freeman's Creek District, Lewis County, W.Va.  
Union District, Harrison County, W.Va.  
Greenbrier District, Doddridge County, W.Va.

HG ENERGY, II APPALACHIA, LLC  
5260 DuPont Road, Parkersburg, WV 26101

04/05/2024



10/11/2023

EXISTING WELLS LOCATED WITHIN THE AREA OF REVIEW FOR:

**WINANS 1216 NORTH UNIT AND PROPOSED WELLS N-1H, N-2H, N-3H, N-4H, N-5H & N-11H**

CT	API	COUNTY	FARM	OPERATOR NAME	FORMATION NAME	WELL TYPE	TVD	STATUS	LATITUDE	LONGITUDE
1	4701700914	Doddridge	W C Nicholas	Stonestreet Lands Co.	Gordon	Oil w/ Gas Show	2865	PLUGGED	39.170268	-80.594453
2	4701703959	Doddridge	Mary Smith	Beechlick Oil, Inc.	UNKNOWN	Gas	-	ACTIVE	39.168252	-80.609979
3	4701703960	Doddridge	Karen Frazee	Beechlick Oil, Inc.	UNKNOWN	Gas	-	ACTIVE	39.169814	-80.611189
4	4701703961	Doddridge	Karen Frazee	Beechlick Oil, Inc.	UNKNOWN	Gas	-	ACTIVE	39.170137	-80.609235
5	4701730418	Doddridge	Edgar Davisson	Hope Construction & Refining	Big Injun (undiff)	Oil	2102	PLUGGED	39.167717	-80.606253
6	4701730569	Doddridge	R W Golden	Hope Natural Gas Company	Up Devonian	Gas	2911	PLUGGED	39.168442	-80.606626
7	4701730754	Doddridge	Edgar Davison	Hope Natural Gas Company	Hampshire Grp	not available	2872	PLUGGED	39.169961	-80.606818
8	4701731161	Doddridge	Edgar Davisson	Hope Natural Gas Company	Hampshire Grp	Gas	2928	PLUGGED	39.168364	-80.605886
9	4703302906	Harrison	W W Nicholson	WV Mineral Group, LLC	Bradford	Oil and Gas	4129	ACTIVE	39.169087	-80.584184
10	4704100077	Lewis	Straley Heirs	Eastern Gas Transmission & Storage, Inc.	Squaw	Storage	2432	PLUGGED	39.126785	-80.579708
11	4704100181	Lewis	Trust	Eastern Gas Transmission & Storage, Inc.	Hampshire Grp	Storage	2383	ACTIVE	39.129925	-80.584464
12	4704100183	Lewis	Charles E Gum	Eastern Gas Transmission & Storage, Inc.	Hampshire Grp	Storage	2294	ACTIVE	39.130684	-80.590394
13	4704100191	Lewis	Alexander Brown	Eastern Gas Transmission & Storage, Inc.	UNKNOWN	Storage	3650	PLUGGED	39.130937	-80.577606
14	4704100193	Lewis	J P Hull	Eastern Gas Transmission & Storage, Inc.	Up Devonian	Storage	2179	PLUGGED	39.110213	-80.571739
15	4704100195	Lewis	Henry Snyder	Eastern Gas Transmission & Storage, Inc.	Gantz	Storage	2390	ACTIVE	39.107930	-80.581935
16	4704100196	Lewis	Marvin Lynn/M Simons	Eastern Gas Transmission & Storage, Inc.	Hampshire Grp	Storage	2462	ACTIVE	39.132648	-80.581693
17	4704100198	Lewis	Minor J Hall	Eastern Gas Transmission & Storage, Inc.	Gantz	Gas	2103	ACTIVE	39.115048	-80.562597
18	4704100250	Lewis	M Law	Eastern Gas Transmission & Storage, Inc.	Gantz	Storage	2327	ACTIVE	39.137475	-80.582081
19	4704100251	Lewis	Minor J Hall	Eastern Gas Transmission & Storage, Inc.	Gantz	Storage	2102	ACTIVE	39.113724	-80.563428
20	4704100254	Lewis	William J Woofter	Chevron USA Inc.	Gordon	Storage	2520	PLUGGED	39.116389	-80.585385
21	4704100269	Lewis	I E Waggoner	Eastern Gas Transmission & Storage, Inc.	Gantz	Storage	2300	ACTIVE	39.125013	-80.576302
22	4704100334	Lewis	Alice Burnside	Eastern Gas Transmission & Storage, Inc.	Hampshire Grp	Storage	2240	ACTIVE	39.111416	-80.559085
23	4704100336	Lewis	T J Fahey Hrs	Hope Natural Gas Company	Up Devonian	Storage	2730	PLUGGED	39.142828	-80.600471
24	4704100524	Lewis	A H Kemper	Eastern Gas Transmission & Storage, Inc.	Hampshire Grp	Storage	2510	ACTIVE	39.122609	-80.583773
25	4704101140	Lewis	M Law	Eastern Gas Transmission & Storage, Inc.	Fifth	Storage	2959	PLUGGED	39.137919	-80.587021
26	4704101217	Lewis	L Woofter	Eastern Gas Transmission & Storage, Inc.	Gantz	Storage	2359	ACTIVE	39.123068	-80.579202
27	4704101253	Lewis	Charles E Gum	Eastern Gas Transmission & Storage, Inc.	UNKNOWN	Storage	3013	ACTIVE	39.133292	-80.588726
28	4704101254	Lewis	C E Gum	Hope Natural Gas Company	Gantz	Storage	2576	PLUGGED	39.1373	-80.59238
29	4704101480	Lewis	Brent Maxwell	Eastern Gas Transmission & Storage, Inc.	Benson	Oil and Gas	5196	ACTIVE	39.165461	-80.587282
30	4704101754	Lewis	Nell L Hull	Eastern Gas Transmission & Storage, Inc.	Greenland Gap Fm	Gas	4853	ACTIVE	39.107951	-80.565020
31	4704101794	Lewis	Robert McKinley/R Seckma	Eastern Gas Transmission & Storage, Inc.	Greenland Gap Fm	Gas	4600	ACTIVE	39.104510	-80.575661
32	4704101797	Lewis	Martha H Burnside	Eastern Gas Transmission & Storage, Inc.	Greenland Gap Fm	Gas	4810	ACTIVE	39.118694	-80.566860
33	4704101803	Lewis	J P Hull	Eastern Gas Transmission & Storage, Inc.	Greenland Gap Fm	Gas	4960	ACTIVE	39.111350	-80.575406
34	4704101859	Lewis	Jacob L Straley	Eastern Gas Transmission & Storage, Inc.	UNKNOWN	not available	2375	PLUGGED	39.117775	-80.571778
35	4704101862	Lewis	Oris B Snyder Hrs	Eastern Gas Transmission & Storage, Inc.	Greenland Gap Fm	Gas	5020	ACTIVE	39.109807	-80.584274

04/05/2024

36	4704101863	Lewis	Charles Wooffter	RECEIVED by Dept. 18 2024	Eastern Gas Transmission & Storage, Inc.	Misc Sands-BNSN/BRLR	Dry w/ Gas Show	4941	PLUGGED	39.116724	-80.575201
37	4704101966	Lewis	Brent Maxwell		Eastern Gas Transmission & Storage, Inc.	Gordon	Dry	2896	PLUGGED	39.154711	-80.578247
38	4704101988	Lewis	William Wooffter		Eastern Gas Transmission & Storage, Inc.	Benson	Gas	5065	ACTIVE	39.116482	-80.585486
39	4704102214	Lewis	L Garrett		Eastern Gas Transmission & Storage, Inc.	Big Injun (Grnbr)	Gas	2209	ACTIVE	39.154846	-80.592101
40	4704102230	Lewis	M Hall	NY Department of Environmental Protection	Eastern Gas Transmission & Storage, Inc.	UNKNOWN	Gas	2638	PLUGGED	39.119289	-80.567460
41	4704102258	Lewis	J Hitt		Eastern Gas Transmission & Storage, Inc.	UNKNOWN	Gas	2873	ACTIVE	39.145049	-80.596972
42	4704102280	Lewis	B Maxwell		Eastern Gas Transmission & Storage, Inc.	UNKNOWN	not available	2282	ACTIVE	39.158011	-80.590323
43	4704102581	Lewis	Henry Snyder		Eastern Gas Transmission & Storage, Inc.	UNKNOWN	Storage	-	PLUGGED	39.110258	-80.586713
44	4704102585	Lewis	Charles Wooffter		Eastern Gas Transmission & Storage, Inc.	UNKNOWN	Storage	2441	ACTIVE	39.117184	-80.580948
45	4704102597	Lewis	J P Hull		Eastern Gas Transmission & Storage, Inc.	UNKNOWN	Storage	2394	ACTIVE	39.106411	-80.576060
46	4704102606	Lewis	Wm J Wooffter		Eastern Gas Transmission & Storage, Inc.	UNKNOWN	Storage	2810	ACTIVE	39.113965	-80.574972
47	4704102607	Lewis	Wm J Wooffter		Eastern Gas Transmission & Storage, Inc.	UNKNOWN	Storage	2749	ACTIVE	39.111264	-80.581583
48	4704102609	Lewis	A H Kemper		Eastern Gas Transmission & Storage, Inc.	UNKNOWN	Storage	-	ACTIVE	39.126810	-80.593577
49	4704102614	Lewis	Moses T Law		Eastern Gas Transmission & Storage, Inc.	UNKNOWN	Storage	2540	ACTIVE	39.137501	-80.576180
50	4704102629	Lewis	et al		Eastern Gas Transmission & Storage, Inc.	UNKNOWN	not available	2685	PLUGGED	39.108750	-80.566721
51	4704102630	Lewis	Alice Burnside		Eastern Gas Transmission & Storage, Inc.	UNKNOWN	Storage	2670	ACTIVE	39.108393	-80.560717
52	4704102673	Lewis	Alexander Brown		Eastern Gas Transmission & Storage, Inc.	UNKNOWN	not available	2937	PLUGGED	39.129725	-80.568463
53	4704102678	Lewis	M J Hall		Eastern Gas Transmission & Storage, Inc.	Brallier	Gas	5250	ACTIVE	39.113231	-80.566831
54	4704102736	Lewis	Minor J Hall		Eastern Gas Transmission & Storage, Inc.	UNKNOWN	not available	2878	PLUGGED	39.121607	-80.566037
55	4704102759	Lewis	Alexander Brown		Eastern Gas Transmission & Storage, Inc.	UNKNOWN	Storage	2212	ACTIVE	39.130046	-80.572012
56	4704102763	Lewis	Straley Heirs		Eastern Gas Transmission & Storage, Inc.	UNKNOWN	Storage	2253	ACTIVE	39.125247	-80.585815
57	4704102764	Lewis	James/Neil Hitt		Eastern Gas Transmission & Storage, Inc.	Hampshire Grp	Storage	2437	ACTIVE	39.126097	-80.590546
58	4704102766	Lewis	J P Hull		Eastern Gas Transmission & Storage, Inc.	UNKNOWN	Storage	2596	ACTIVE	39.112160	-80.577323
59	4704102767	Lewis	Charles Wooffter		Eastern Gas Transmission & Storage, Inc.	UNKNOWN	Storage	2767	ACTIVE	39.115989	-80.575640
60	4704103099	Lewis	J W Eakin		Eastern Gas Transmission & Storage, Inc.	Mauch Chunk	Dry	1695	PLUGGED	39.109710	-80.571810
61	4704103400	Lewis	J W Eakin		Eastern Gas Transmission & Storage, Inc.	UNKNOWN	not available	1972	PLUGGED	39.112764	-80.572943
62	4704103752	Lewis	Larry & Lynette Hines		Eastern Gas Transmission & Storage, Inc.	UNKNOWN	not available	2808	PLUGGED	39.12277	-80.575554
63	4704103873	Lewis	Hazel Kelley		CNG Development Co.	UNKNOWN	not available	5924	PLUGGED	39.15501	-80.585015
64	4704104452	Lewis	Nell Louise Hull		Consol Gas Company	Big Lime	Dry	2330	PLUGGED	39.108268	-80.568101
65	4704104504	Lewis	Claude Goldsmith		Eastern Gas Transmission & Storage, Inc.	UNKNOWN	not available	-	PLUGGED	39.104768	-80.583437
66	4704104553	Lewis	Robert McKinley et al		Eastern Gas Transmission & Storage, Inc.	Greenland Gap Fm	Gas	5185	ACTIVE	39.107391	-80.579259
67	4704104554	Lewis	Robert McKinley et al		Eastern Gas Transmission & Storage, Inc.	Greenland Gap Fm	Gas	4807	ACTIVE	39.107977	-80.571850
68	4704104555	Lewis	Robert E Thompson		Eastern Gas Transmission & Storage, Inc.	Greenland Gap Fm	Gas	4839	ACTIVE	39.110838	-80.561324
69	4704104758	Lewis	C A Straley/Lee Wooffter		Eastern Gas Transmission & Storage, Inc.	Fifth	Oil	2613	PLUGGED	39.124190	-80.570090
70	4704104808	Lewis	James J Hitt		Eastern Gas Transmission & Storage, Inc.	UNKNOWN	not available	3027	PLUGGED	39.147178	-80.593768
71	4704105063	Lewis	Gerald P Hull		Eastern Gas Transmission & Storage, Inc.	Alexander	Gas	5031	ACTIVE	39.109975	-80.568827
72	4704105220	Lewis	Flint, Wm. G.		Eastern Gas Transmission & Storage, Inc.	Greenland Gap Fm	Gas	4430	ACTIVE	39.090578	-80.45593
73	4704105688	Lewis	John E Tyler		Diversified Resources, Inc.	UNKNOWN	not available	-	NEVER DRILLED	39.165574	-80.582408
74	4704105700	Lewis	Lee Wooffter		Eastern Gas Transmission & Storage, Inc.	Gordon	Oil and Gas	2597	PLUGGED	39.121257	-80.571225

04/05/2024



75	4704130003	Lewis	Lowman G Garrett	Hope Natural Gas Company	UNKNOWN	not available	3241	PLUGGED	39.16168	-80.595447	
76	4704130034	Lewis	Kemper Heirs	Hope Natural Gas Company	Gordon Stray	Gas	2575	PLUGGED	39.137317	-80.592276	
77	4704130049	Lewis	Jno A L Nicholson	Hope Natural Gas Company	Hampshire Grp	Gas	3086	PLUGGED	39.150275	-80.583681	
78	4704130086	Lewis	Lewis Woofter	(Orphan well proj)	UNKNOWN	not available	2890	PLUGGED	39.12306	-80.579278	
79	4704130147	Lewis	Leman G Garrett	Hope Natural Gas Company	Hampshire Grp	Gas	2918	PLUGGED	39.150804	-80.590043	
80	4704130152	Lewis	J W Bailey	Hope Natural Gas Company	UNKNOWN	not available	2861	PLUGGED	39.122526	-80.567211	
81	4704130226	Lewis	P W Arbogast	South Penn Oil (S. Penn Nat. Gas)	Hampshire Grp	Oil and Gas	2690	PLUGGED	39.124697	-80.567411	
82	4704130425	Lewis	Sarepta Nutter	Bradford Supply Co.	Hampshire Grp	Oil and Gas	2838	PLUGGED	39.122526	-80.566094	
83	4704130426	Lewis	Sarepta Nutter	Bradford Supply Co.	Hampshire Grp	Gas	2783	PLUGGED	39.126151	-80.567401	
84	4704170565	Lewis	J Taylor	UNKNOWN	UNKNOWN	not available	-	ABANDONED	39.153612	-80.599744	
85	4704170914	Lewis	Boyd Gum	Hope Natural Gas Company	UNKNOWN	not available	-	ABANDONED	39.104977	-80.571421	
							YELLOW DENOTES WELL WITH TVD > 4,500'		GREEN DENOTES SURVEYED WELLS		

SOURCE: WVGES DATASET (2020) and WVDEP WEBSITE AND FIELD SURVEYS

UPDATED 10/11/2023

RECEIVED  
Office of

MAR 18 2024

WV Department of  
Environmental Protection

04/05/2024

7,920' to Top Hole  
1,627' to Bottom Hole

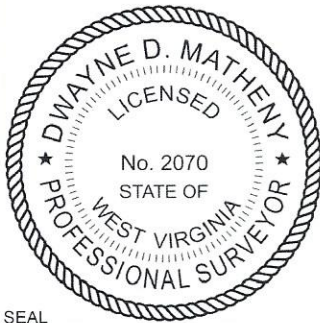
TOP LATITUDE 39 - 07 - 30  
BTM LATITUDE 39 - 12 - 30

TOP HOLE LONGITUDE 80 - 32 - 30  
BTM HOLE LONGITUDE 80 - 35 - 00

6,357' to Top Hole

12,656' to Bottom Hole

Page 2  
MATCH LINE

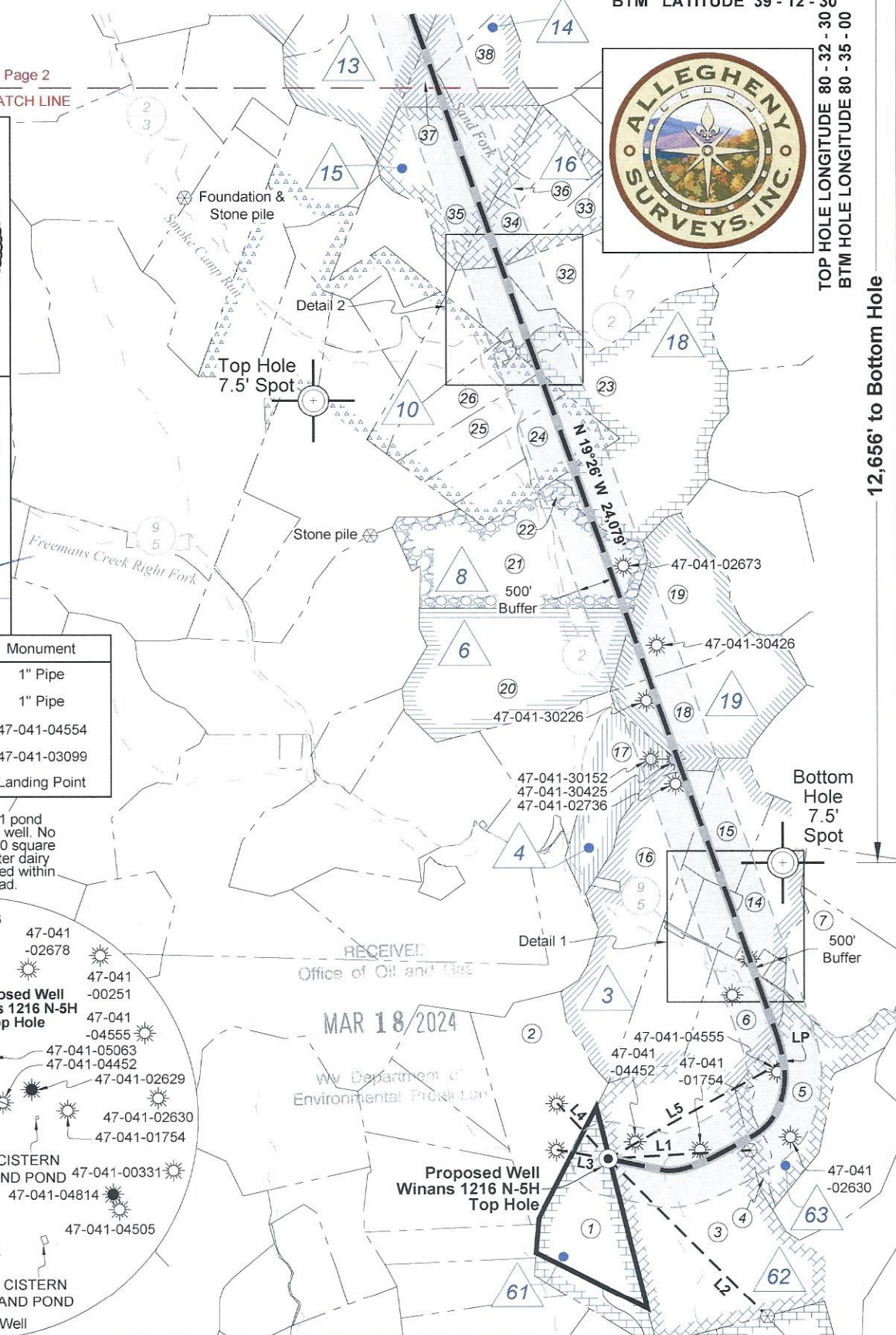
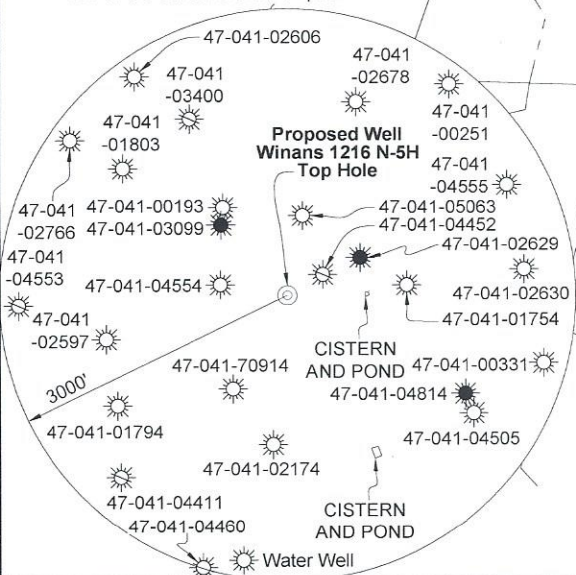


I, the undersigned, hereby certify that this plat is correct to the best of my knowledge and belief and shows all the information required by law and the rules issued and prescribed by the Department of Environmental Protection.

*Dwayne D. Matheny*  
Dwayne D. Matheny, P.S. 2070

Tag	Bearing	Dist.	Monument
L1	S 86°46' W	1,919.2'	1" Pipe
L2	N 44°53' W	3,036.1'	1" Pipe
L3	S 80°00' E	705.1'	47-041-04554
L4	S 42°20' E	1,019.0'	47-041-03099
L5	N 60°54' E	2,709.7'	Landing Point

Note: 0 water wells, 1 cistern and 1 pond were found within 1500' of proposed well. No occupied dwellings or buildings 2,500 square feet or larger used to house or shelter dairy cattle or poultry husbandry are located within 625' of the center of the well pad.



FILE NO: 43-12-FC-21  
DRAWING NO: Winans 1216 N-5H Well Plat  
SCALE: 1" = 2000'  
MINIMUM DEGREE OF ACCURACY: Submeter  
PROVEN SOURCE OF ELEVATION: CORS, Bridgeport, WV

**STATE OF WEST VIRGINIA**  
DEPARTMENT OF ENVIRONMENTAL PROTECTION  
**OIL AND GAS DIVISION**

DATE: January 24 2024  
OPERATOR'S WELL NO. Winans 1216 N-5H  
API WELL NO  
47 - 041 - 05744  
STATE COUNTY PERMIT

WELL TYPE:  OIL  GAS  LIQUID INJECTION  WASTE DISPOSAL  
(IF GAS) PRODUCTION:  STORAGE  DEEP  SHALLOW

LOCATION: ELEVATION: 1,394' WATERSHED: Fink Creek QUADRANGLE: Top: Camden Btm: Big Isaac  
DISTRICT: Freemans Creek COUNTY: Lewis  
SURFACE OWNER: Stephen B. Winans ACREAGE: 45.00  
ROYALTY OWNER: Elaina D. Yanceris, et al, et al LEASE NO: ACREAGE: 123

PROPOSED WORK:  DRILL  CONVERT  DRILL DEEPER  FRACTURE OR STIMULATE  PLUG OFF OLD FORMATION  
 PERFORATE NEW FORMATION  OTHER PHYSICAL CHANGE IN WELL (SPECIFY) Bottom Hole MOD 7,175' TVD  
 PLUG AND ABANDON  CLEAN OUT AND REPLUG TARGET FORMATION: Marcellus Shale ESTIMATED DEPTH: 32,774' MD

WELL OPERATOR: HG Energy II Appalachia, LLC DESIGNATED AGENT: Diane C. White  
ADDRESS: 5260 Dupont Road ADDRESS: 5260 Dupont Road  
Parkersburg, WV 26101 Parkersburg, WV 26101

RECEIVED  
Office of Oil and Gas  
MAR 18 2024  
WV Department of Environmental Protection

04/05/2024

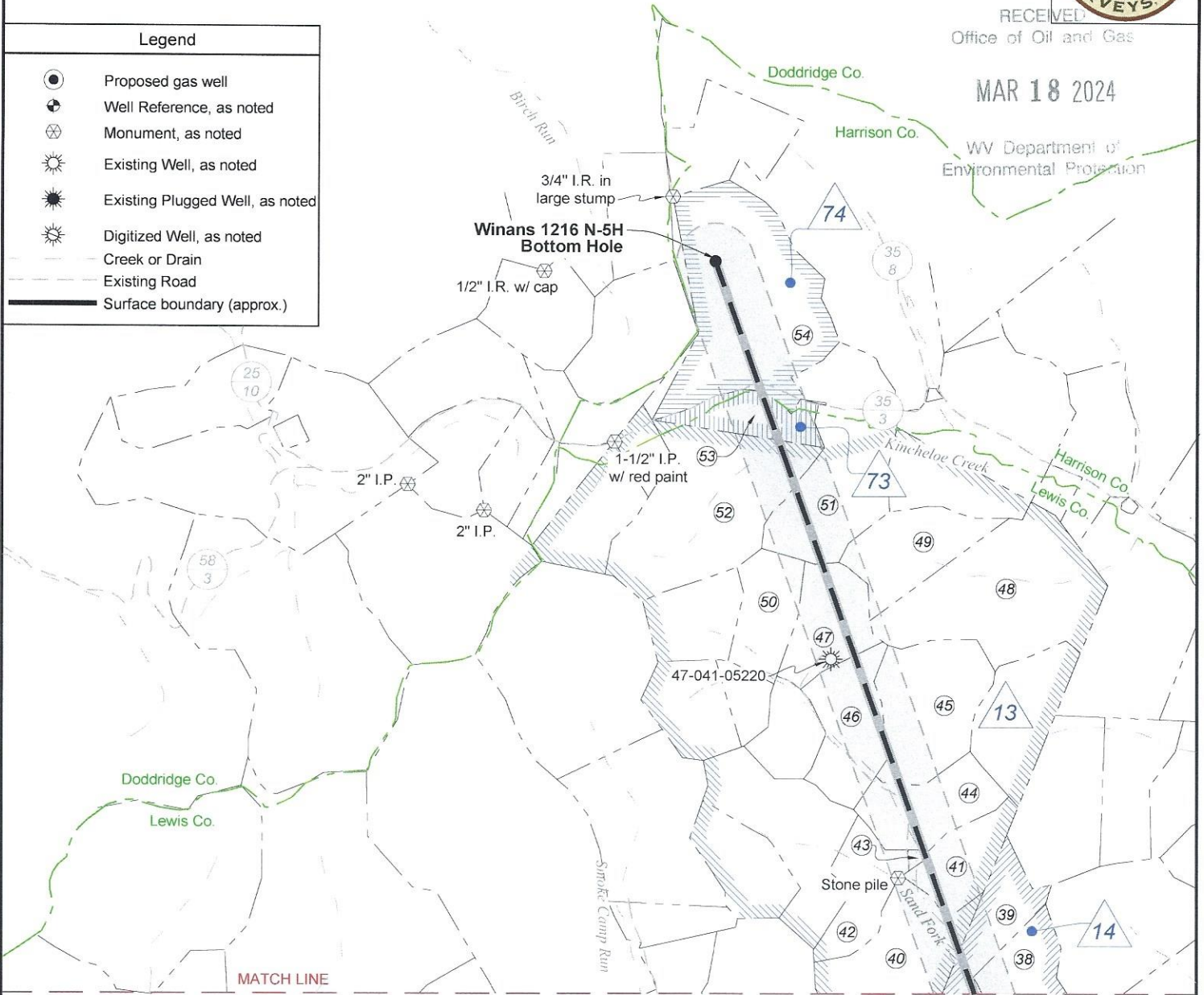


RECEIVED  
Office of Oil and Gas

MAR 18 2024

WV Department of  
Environmental Protection

Legend	
	Proposed gas well
	Well Reference, as noted
	Monument, as noted
	Existing Well, as noted
	Existing Plugged Well, as noted
	Digitized Well, as noted
	Creek or Drain
	Existing Road
	Surface boundary (approx.)



Page 1

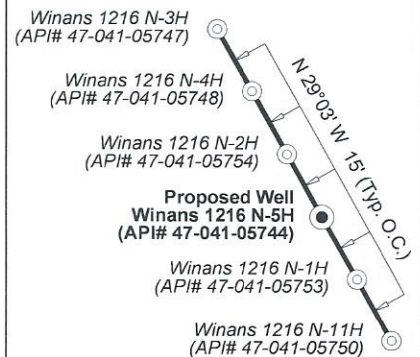
Notes: Well No. Winans 1216 N-5H  
UTM NAD 1983 (USSF)  
Top Hole Coordinates  
N: 14,202,100.69'  
E: 1,762,560.76'  
Landing Point Coordinates  
N: 14,203,418.26'  
E: 1,764,928.52'  
Bottom Hole Coordinates  
N: 14,226,115.78'  
E: 1,756,923.42'

Notes: Well No. Winans 1216 N-5H  
West Virginia Coordinate System of 1927, North Zone based upon Differential GPS Measurements.  
Top Hole coordinates Bottom Hole coordinates  
Latitude: 39°06'27.15" Longitude: 80°34'10.51" Latitude: 39°10'24.86" Longitude: 80°35'20.67"  
UTM Zone 17, NAD 1983  
Top Hole Coordinates Bottom Hole Coordinates  
N: 4,328,808.948m E: 537,229.594m N: 4,336,128.762m E: 535,511.329m  
Plat orientation and corner and well references are based upon the grid north meridian. Well location references are based upon the magnetic meridian.

**Well Location References Not to Scale**



**Wellhead Layout (NTS)**



FILE NO: 43-12-FC-21  
DRAWING NO: Winans 1216 N-5H Well Plat  
SCALE: 1" = 2000'  
MINIMUM DEGREE OF ACCURACY: Submeter  
PROVEN SOURCE OF ELEVATION: CORS, Bridgeport, WV

**STATE OF WEST VIRGINIA**  
DEPARTMENT OF ENVIRONMENTAL PROTECTION  
**OIL AND GAS DIVISION**

DATE: January 24 2024  
OPERATOR'S WELL NO. Winans 1216 N-5H  
API WELL NO  
47 - 041 - 05744  
STATE COUNTY PERMIT

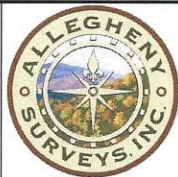
WELL TYPE:  OIL  GAS  LIQUID INJECTION  WASTE DISPOSAL  
(IF GAS) PRODUCTION:  STORAGE  DEEP  SHALLOW

LOCATION: ELEVATION: 1,394' WATERSHED: Fink Creek  
DISTRICT: Freemans Creek  
SURFACE OWNER: Stephen B. Winans  
ROYALTY OWNER: Elaina D. Yanceris, et al, et al LEASE NO: ACREAGE: 123

PROPOSED WORK:  DRILL  CONVERT  DRILL DEEPER  FRACTURE OR STIMULATE  PLUG OFF OLD FORMATION  
 PERFORATE NEW FORMATION  OTHER PHYSICAL CHANGE IN WELL (SPECIFY) Bottom Hole MOD 7,175' TVD  
 PLUG AND ABANDON  CLEAN OUT AND REPLUG TARGET FORMATION: Marcellus Shale ESTIMATED DEPTH: 32,774' MD

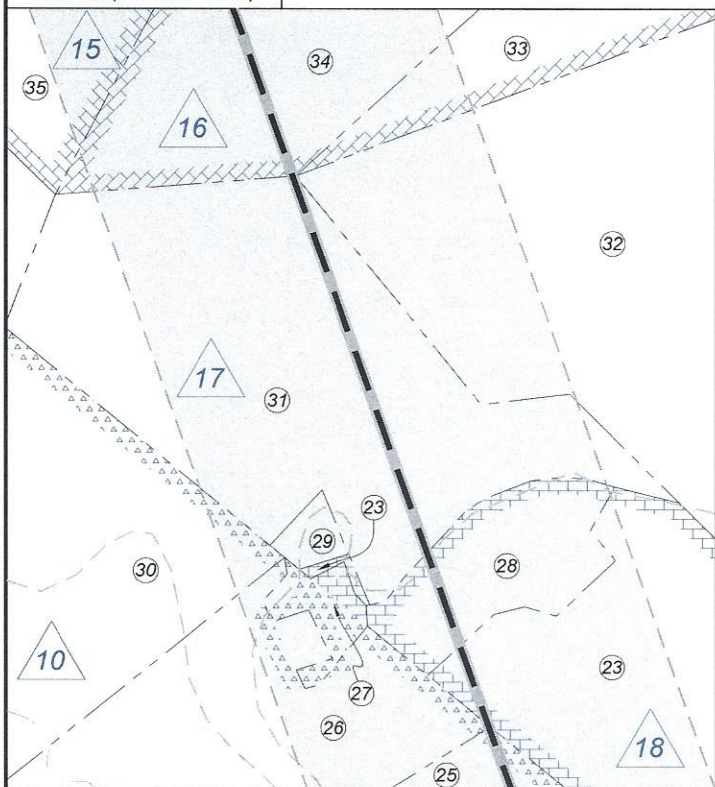
QUADRANGLE: Top: Camden Btm: Big Isaac  
COUNTY: Lewis  
ACREAGE: 45.00  
04/05/2024

WELL OPERATOR: HG Energy II Appalachia, LLC DESIGNATED AGENT: Diane C. White  
ADDRESS: 5260 Dupont Road ADDRESS: 5260 Dupont Road  
Parkersburg, WV 26101 Parkersburg, WV 26101

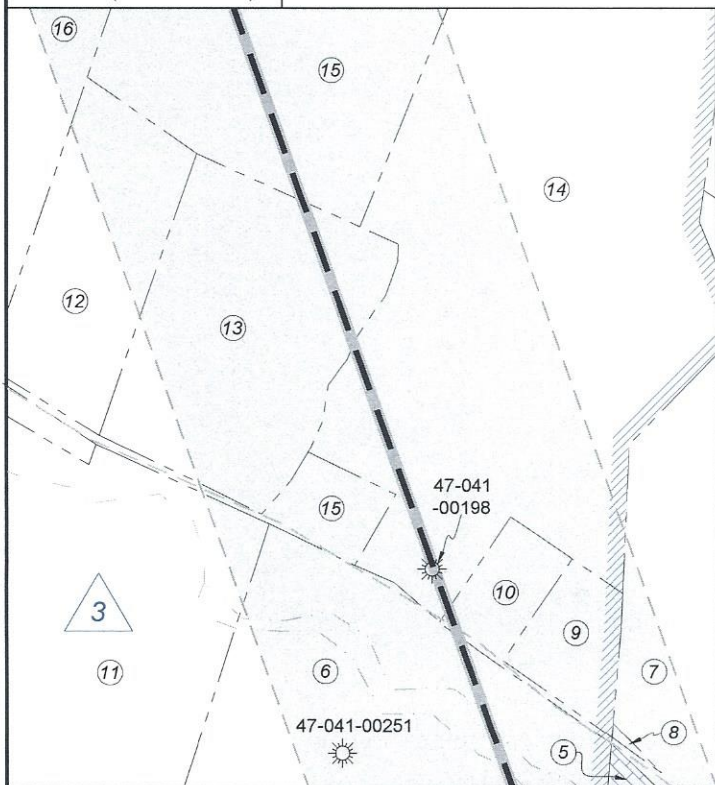


ID	Lease
3	Minor J. Hall, et ux
4	Mary M. Bailey, et al
6	I.E. Waggoner, et ux
8	Alexander Brown, et ux
10	Mary J. McConkey, et vir, et al
13	W. Brent Maxwell, et al
14	Hunter M. Bennett, Executor & Trustee of Alice B.
15	C.A. Coffindaffer, et al
16	Hunter M. Bennett, et ux
17	C.M. Garrett, et ux
18	J.R.H. Straley, et ux
19	Sarepta Nutter
61	William & Mary Winans
62	Boyd Gum, et ux
63	M.J. Burnside, et ux
73	Charmian L. Bulley, et al
74	Elva Kost, et al

Detail 2 (Scale 1"=500')



Detail 1 (Scale 1"=500')



Lewis Co. (Freemans Creek Dist.)

No.	TM / Par	Owner	Bk / Pg	Ac.
1	4C / 21	Stephen B. Winans	630 / 50	45.00
2	4C / 22	Robert & Brenda McKinley	777 / 635	74.00
3	4C / 31	Gerald P. Hull	W18 / 661	199.25
4	5C / 15.1	Gerald P. & Mary J. Hull	439 / 253	6.93
5	5C / 15	Robert E. & Pamela L. Thompson	519 / 627	60.82
6	4C / 34	Robert E. & Pamela L. Thompson	519 / 627	38.00
7	5C / 10	Stephen & Sherry Marsh	631 / 742	55.69
8	5C / 10.3	Ashley N. Stevens	774 / 566	0.06
9	5C / 9.1	Ashley N. Stevens	774 / 566	1.89
10	5C / 9.2	Nancy R. Blankenbarker, et al	748 / 30	1.43
11	4C / 30.1	Faye Isabella	654 / 202	36.88
12	4C / 28	H.G. Energy II Appalachia, LLC	780 / 456	6.67
13	4C / 32	H.G. Energy II Appalachia, LLC	780 / 456	9.77
14	5C / 9	Jason E. & Amy L. Hunt	792 / 700	37.96
15	4C / 30	Jason E. & Amy L. Hunt	792 / 700	26.96
16	4C / 23	Jason E. & Amy L. Hunt	627 / 224	76.25
17	4C / 26	Charles R. Bailey	W52 / 730	44.20
18	4C / 27	Jeremy B. & Rebecca K. Day	726 / 592	56.50
19	4B / 42	Steven E. Chumney	776 / 131	56.50
20	4C / 33	Crystal M. Mick	713 / 935	92.75
21	4B / 17	Clarence O. Ferguson	552 / 612	96.50
22	4B / 18	Raymond D. Workman	F29 / 428	3.53
23	4B / 40	Curtis G. Ferguson	552 / 449	121.21
24	4B / 20.2	Pamela I. E. Kochenower, et al	601 / 59	23.27
25	4B / 21	Karl H. & Theresa B. Skaggs, et al	712 / 704	24.00
26	4B / 22	Karl H. & Theresa B. Skaggs, et al	712 / 704	25.75
27	4B / 24	Law Chapel Cemetery Association	448 / 77	0.92
28	4B / 40.1	Paul E. & Nina Burt	766 / 880	4.00
29	4B / 25.1	Sue E. Hall, et al	556 / 536	0.25
30	4B / 23	Karl H. & Theresa B. Skaggs, et al	712 / 704	26.00
31	4B / 25	Sue E. Hall, et al	556 / 536	20.00
32	4B / 39	Mike Ross, Inc.	678 / 455	67.75
33	4B / 38	Christopher Dobbins	724 / 857	19.25
34	4B / 33	Mike Ross, Inc.	678 / 455	33.01
35	4B / 32	Larry K. Coffindaffer, et al	W45 / 431	60.00
36	4B / 33.2	Steven M. Miller	753 / 420	3.74
37	4B / 44	John W. Morgan	W10 / 536	6.50
38	4B / 48	Gregory B. Wright	722 / 430	26.75
39	4A / 17	Gregory B. Wright	722 / 430	20.25
40	4B / 47	John W. Morgan	502 / 152	56.50
41	4A / 18	Angela M. & Charles I. Adkins	769 / 332	24.70
42	4A / 20	John W. Morgan	601 / 74	27.63
43	4A / 19	Angela M. & Charles I. Adkins	769 / 332	0.95
44	4A / 32	James E. Titus, et al	W26 / 566	31.00
45	4A / 31	Kincheloe Mitigation Holdings, LLC	704 / 324	50.00
46	4A / 24	John W. Morgan	601 / 74	29.25
47	4A / 25	Gary W. Flint	461 / 107	27.25
48	4A / 28	Kincheloe Mitigation Holdings, LLC	704 / 324	80.00
49	4A / 29	Kincheloe Mitigation Holdings, LLC	704 / 324	39.75
50	4A / 6.1	Kathryn Carpenter, et al	559 / 414	26.25
51	4A / 26	Robert T. Tyler	715 / 227	69.97
52	4A / 2	Haven Sullivan	789 / 834	81.23
53	4A / 1.1	Haven Sullivan	789 / 834	21.41

No.	TM / Par	Owner	Bk / Pg	Ac.
54	421 / 2	Gregory A. Robertson	1607 / 798	103.13

FILE NO: 43-12-FC-21  
DRAWING NO: Winans 1216 N-5H Well Plat  
SCALE: 1" = 2000'  
MINIMUM DEGREE OF ACCURACY:  
Submeter  
PROVEN SOURCE OF ELEVATION:  
CORS, Bridgeport, WV

STATE OF WEST VIRGINIA  
DEPARTMENT OF ENVIRONMENTAL PROTECTION  
OIL AND GAS DIVISION

DATE: January 24 2024  
OPERATOR'S WELL NO. Winans 1216 N-5H  
API WELL NO  
47 - 041 - 05744  
STATE COUNTY PERMIT

WELL TYPE:  OIL  GAS  LIQUID INJECTION  WASTE DISPOSAL  
(IF GAS) PRODUCTION:  STORAGE  DEEP  SHALLOW

LOCATION: ELEVATION: 1,394' WATERSHED: Fink Creek  
DISTRICT: Freemans Creek

Top: Camden  
Btm: Big Isaac  
QUADRANGLE:  
COUNTY: Lewis  
ACREAGE: 45.00  
**04/03/2024**

SURFACE OWNER: Stephen B. Winans  
ROYALTY OWNER: Elaina D. Yanceris, et al, et al LEASE NO: ACREAGE: 123  
PROPOSED WORK:  DRILL  CONVERT  DRILL DEEPER  FRACTURE OR STIMULATE  PLUG OFF OLD FORMATION  
 PERFORATE NEW FORMATION  OTHER PHYSICAL CHANGE IN WELL (SPECIFY) Bottom Hole MOD 7,175' TVD  
 PLUG AND ABANDON  CLEAN OUT AND REPLUG TARGET FORMATION: Marcellus Shale ESTIMATED DEPTH: 32,774' MD

WELL OPERATOR: HG Energy II Appalachia, LLC DESIGNATED AGENT: Diane C. White  
ADDRESS: 5260 Dupont Road ADDRESS: 5260 Dupont Road  
Parkersburg, WV 26101 Parkersburg, WV 26101

WW-6A1  
(5/13)

Operator's Well No. Winans 1216 N25H

**INFORMATION SUPPLIED UNDER WEST VIRGINIA CODE  
Chapter 22, Article 6A, Section 5(a)(5)  
IN LIEU OF FILING LEASE(S) AND OTHER CONTINUING CONTRACT(S)**

Under the oath required to make the verification on page 1 of this Notice and Application, I depose and say that I am the person who signed the Notice and Application for the Applicant, and that –

- (1) the tract of land is the same tract described in this Application, partly or wholly depicted in the accompanying plat, and described in the Construction and Reclamation Plan;
- (2) the parties and recordation data (if recorded) for lease(s) or other continuing contract(s) by which the Applicant claims the right to extract, produce or market the oil or gas are as follows:

Lease Name or Number	Grantor, Lessor, etc.	Grantee, Lessee, etc.	Royalty	Book/Page
----------------------	-----------------------	-----------------------	---------	-----------

\*\*See Attached Sheets\*\*

RECEIVED  
Office of Oil and Gas

MAR 18 2024

WV Department of  
Environmental Protection

Co-Tenancy utilization - At least 75% of the royalty owners have consented to the lawful use or development of the natural gas mineral property on the tract. The interests of the remaining co-tenants will be secured pursuant to the Co-Tenancy Act  
Horizontal Well Unit Utilization - Subject to unitization filing with the WV Oil and Gas Conservation Commission

**Acknowledgement of Possible Permitting/Approval  
In Addition to the Office of Oil and Gas**

The permit applicant for the proposed well work addressed in this application hereby acknowledges the possibility of the need for permits and/or approvals from local, state, or federal entities in addition to the DEP, Office of Oil and Gas, including but not limited to the following:

- WV Division of Water and Waste Management
- WV Division of Natural Resources WV Division of Highways
- U.S. Army Corps of Engineers
- U.S. Fish and Wildlife Service
- County Floodplain Coordinator

The applicant further acknowledges that any Office of Oil and Gas permit in no way overrides, replaces, or nullifies the need for other permits/approvals that may be necessary and further affirms that all needed permits/approvals should be acquired from the appropriate authority before the affected activity is initiated.

Well Operator: HG Energy II Appalachia, LLC  
By: Diane White *Diane White*  
Its: Accountant

HG Energy II Appalachia, LLC  
 Winans 1216 N-5H Lease Chains  
 API # 47-041-05744

1216N Tract	LEGACY LEASE NUMBER	TAX MAP	LEASE NUMBER	GRANTOR/LESSOR	GRANTEE/LESSEE	ROYALTY	DEED BOOK	PAGE
62	FK053212	03-004C-0031-0000	Q100386000	BOYD GUM AND MARY M. GUM, HIS WIFE	RESERVE GAS COMPANY	NOT LESS THAN 1/8	58	474
				HOPE NATURAL GAS COMPANY	HOPE NATURAL GAS COMPANY	DEED	155	202
				CONSOLIDATED GAS SUPPLY CORPORATION	CONSOLIDATED GAS SUPPLY CORPORATION	CONFIRMATORY DEED	294	89
				CONSOLIDATED GAS TRANSMISSION CORPORATION	CONSOLIDATED GAS TRANSMISSION CORPORATION	ASSIGNMENT	425	127
				CNG TRANSMISSION CORPORATION	CNG TRANSMISSION CORPORATION	MERGER/NAME CHANGE	51	795
				DOMINION TRANSMISSION, INC.	DOMINION TRANSMISSION, INC.	MERGER/NAME CHANGE	58	362
				CNX GAS COMPANY LLC	CNX GAS COMPANY LLC	MEMORANDUM OF FARMOUT AGREEMENT	672	154
				DOMINION TRANSMISSION, INC.	CNX GAS COMPANY LLC AND NOBLE ENERGY, INC.	LIMITED PARTIAL ASSIGNMENT (50%)	684	57
				CNX GAS COMPANY LLC	NOBLE ENERGY, INC.	PARTIAL ASSIGNMENT (32%)	712	848
				NOBLE ENERGY, INC.	NOBLE ENERGY, INC.	ASSIGNMENT	717	1
				DOMINION TRANSMISSION, INC.	HG ENERGY II APPALACHIA, LLC	ASSIGNMENT	722	170
				DOMINION ENERGY TRANSMISSION, INC.	DOMINION ENERGY TRANSMISSION, INC.	MERGER/NAME CHANGE	WVSOS	
				DOMINION ENERGY TRANSMISSION, INC.	HG ENERGY II APPALACHIA, LLC	SECOND AMENDMENT TO MEMORANDUM OF FARMOUT AGREEMENT	723	499
				DOMINION ENERGY TRANSMISSION, INC.	HG ENERGY II APPALACHIA, LLC	THIRD AMENDMENT TO MEMORANDUM OF FARMOUT AGREEMENT	734	558
				DOMINION ENERGY TRANSMISSION, INC.	HG ENERGY II APPALACHIA, LLC	ASSIGNMENT (68%)	736	220
				WILLIAM WINANS AND MARY WINANS	J. I. WARDER	NOT LESS THAN 1/8	35	435
				J. I. WARDER	THE HENRY OIL AND GAS COMPANY	ASSIGNMENT	35	435
J. I. WARDER, J. W. TRACY, DAVID SNYDER, PLUS LEVI, FRANK ALFRED, PERRY G. ALFRED, AND H. W. LIGHTBURN (KNOWN AS THE HENRY OIL AND GAS COMPANY)	FRED S. RICH	ASSIGNMENT	44	546				
T. N. BARNSDALL, THE SOUTHERN OIL COMPANY, FRED S. RICH AND W. S. MOWRIS	RESERVE GAS COMPANY	ASSIGNMENT	85	106				
RESERVE GAS COMPANY	HOPE NATURAL GAS COMPANY	MERGER/NAME CHANGE	155	202				
HOPE NATURAL GAS COMPANY	CONSOLIDATED GAS SUPPLY CORPORATION	CONFIRMATORY DEED	294	89				
CONSOLIDATED GAS SUPPLY CORPORATION	CONSOLIDATED GAS TRANSMISSION CORPORATION	ASSIGNMENT	425	127				
CONSOLIDATED GAS TRANSMISSION CORPORATION	CNG TRANSMISSION CORPORATION	MERGER/NAME CHANGE	51	795				
CNG TRANSMISSION CORPORATION	DOMINION TRANSMISSION, INC.	MERGER/NAME CHANGE	9	628				
DOMINION TRANSMISSION, INC.	CNX GAS COMPANY LLC	MEMORANDUM OF FARMOUT AGREEMENT	672	154				
CNX GAS COMPANY LLC	NOBLE ENERGY, INC.	LIMITED PARTIAL ASSIGNMENT (50%)	684	57				
DOMINION TRANSMISSION, INC.	CNX GAS COMPANY LLC AND NOBLE ENERGY, INC.	PARTIAL ASSIGNMENT (32%)	712	848				
CNX GAS COMPANY LLC	NOBLE ENERGY, INC.	ASSIGNMENT	717	1				
NOBLE ENERGY, INC.	HG ENERGY II APPALACHIA, LLC	ASSIGNMENT	722	170				
DOMINION TRANSMISSION, INC.	DOMINION ENERGY TRANSMISSION, INC.	MERGER/NAME CHANGE	WVSOS					
DOMINION ENERGY TRANSMISSION, INC.	HG ENERGY II APPALACHIA, LLC	SECOND AMENDMENT TO MEMORANDUM OF FARMOUT AGREEMENT	723	499				
DOMINION ENERGY TRANSMISSION, INC.	HG ENERGY II APPALACHIA, LLC	THIRD AMENDMENT TO MEMORANDUM OF FARMOUT AGREEMENT	734	558				
DOMINION ENERGY TRANSMISSION, INC.	HG ENERGY II APPALACHIA, LLC	ASSIGNMENT (68%)	736	220				
M. J. BURNSIDE AND ALICE BURNSIDE, HIS WIFE	H. H. HILTON	NOT LESS THAN 1/8	40	120				
H. H. HILTON	CRUDE OIL COMPANY	ASSIGNMENT	55	435				
CRUDE OIL COMPANY	THE HOPE NATURAL GAS COMPANY AND RESERVE GAS COMPANY	ASSIGNMENT	55	456				
RESERVE GAS COMPANY	HOPE NATURAL GAS COMPANY	DEED	155	202				
HOPE NATURAL GAS COMPANY	CONSOLIDATED GAS SUPPLY CORPORATION	CONFIRMATORY DEED	294	89				
CONSOLIDATED GAS SUPPLY CORPORATION	CONSOLIDATED GAS TRANSMISSION CORPORATION	ASSIGNMENT	425	127				
CONSOLIDATED GAS TRANSMISSION CORPORATION	CNG TRANSMISSION CORPORATION	MERGER/NAME CHANGE	WVSOS					
CNG TRANSMISSION CORPORATION	DOMINION TRANSMISSION, INC.	MERGER/NAME CHANGE	9	628				
DOMINION TRANSMISSION, INC.	DOMINION EXPLORATION & PRODUCTION INC	ASSIGNMENT	651	137				
DOMINION EXPLORATION & PRODUCTION INC	CONSOL ENERGY HOLDINGS LLC XVI	ASSIGNMENT	651	318				

RECEIVED  
 Office of Oil and Gas  
 04/05/2024  
 APR 18 2024















**HG Energy, LLC**  
5260 Dupont Road  
Parkersburg, WV 26101  
(304) 420-1100 - Office  
(304) 863-3172 - Fax

March 15, 2024

*Chk # 42684  
7500*

WV DEP  
Division of Oil & Gas  
Attn: Cragin Blevins  
601 57<sup>th</sup> Street  
Charleston, West Virginia 25304

RE: Winans 1216 N-5H Drill Permit Revision Request – (47-041-05744)  
Freemans Creek District, Lewis County  
West Virginia

Dear Mr. Blevins -

Per our discussions, enclosed are revised forms (WW-6B, casing schematic, survey plat, mylar, AOR, WW6A-1) and a check for expedited service for the 1216 N-5H well work permit revision request. We ask the permit be modified to reflect the revised lateral.

Please let me know if you have any questions or require additional information. I can be reached at (304) 420-1119 or [dwhite@hgenergyllc.com](mailto:dwhite@hgenergyllc.com).

Very truly yours,

*Diane White*

Diane C. White

Enclosures

cc: Ken Greynolds – WV DEP State Inspector

RECEIVED  
Office of Oil and Gas

MAR 18 2024

WV Department of  
Environmental Protection

04/05/2024