



west virginia department of environmental protection

Office of Oil and Gas
601 57th Street, S.E.
Charleston, WV 25304
(304) 926-0450
fax: (304) 926-0452

Harold D. Ward, Cabinet Secretary
www.dep.wv.gov

Monday, June 7, 2021
PERMIT MODIFICATION APPROVAL
Horizontal 6A / New Drill

HG ENERGY II APPALACHIA, LLC
5260 DUPONT ROAD
PARKERSBURG, WV 26101

Re: Permit Modification Approval for FLESHER 1212 N-2H
47-041-05711-00-00

Extend Lateral, 15526' to 16461'. Updated Lease Chain.

HG ENERGY II APPALACHIA, LLC

The Office of Oil and Gas has reviewed the attached permit modification for the above referenced permit. The attached modification has been approved and well work may begin. Please be reminded that the oil and gas inspector is to be notified twenty-four (24) hours before permitted well work is commenced.

If there are any questions, please feel free to contact me at (304) 926- 0450.

James A. Martin
Chief

Operator's Well Number: FLESHER 1212 N-2H
Farm Name: H. G. ENERGY II APPALACHIA, LLC
U.S. WELL NUMBER: 47-041-05711-00-00
Horizontal 6A New Drill
Date Modification Issued: 06/07/2021

Promoting a healthy environment.

06/11/2021

WW-6B
(04/15)

API NO. 47- _____
OPERATOR WELL NO. Flesher 1212 N-2H
Well Pad Name: Flesher 1212

STATE OF WEST VIRGINIA
DEPARTMENT OF ENVIRONMENTAL PROTECTION, OFFICE OF OIL AND GAS
WELL WORK PERMIT APPLICATION

1) Well Operator: HG Energy II Appalachia, Inc. 494519932 Lewis Freeman Weston 7.5'
Operator ID County District Quadrangle

2) Operator's Well Number: Flesher 1212 N-2H Well Pad Name: Flesher 1212

3) Farm Name/Surface Owner: Flesher Public Road Access: SR19 to Kincheloe Run Rd to Valley Chapel Rd

4) Elevation, current ground: 1338' Elevation, proposed post-construction: 1332'

5) Well Type (a) Gas Oil _____ Underground Storage _____

Other _____

(b) If Gas Shallow Deep _____

Horizontal SDW

6) Existing Pad: Yes or No No 5/21/2021

7) Proposed Target Formation(s), Depth(s), Anticipated Thickness and Expected Pressure(s):
Marcellus at 6845'/6927' and 82' in thickness. Anticipated pressure at 4314#.

8) Proposed Total Vertical Depth: 6925'

9) Formation at Total Vertical Depth: Marcellus

10) Proposed Total Measured Depth: 23,855'

11) Proposed Horizontal Leg Length: 16,461'

12) Approximate Fresh Water Strata Depths: 105', 273', 302'

13) Method to Determine Fresh Water Depths: Nearest offset well data, (47-041-5338, 0218)

14) Approximate Saltwater Depths: 1028' (Nearest offset well data, 47-041-1673)

15) Approximate Coal Seam Depths: 420', 525' 830' (Surface casing is being extended to cover the coal in the DTI Storage Field)

16) Approximate Depth to Possible Void (coal mine, karst, other): None

17) Does Proposed well location contain coal seams directly overlying or adjacent to an active mine? Yes _____ No

(a) If Yes, provide Mine Info: Name: _____
Depth: _____
Seam: _____
Owner: _____

RECEIVED
Office of Oil and Gas
MAY 27 2021
WV Department of
Environmental Protection

WW-6B
(04/15)

API NO. 47- _____
OPERATOR WELL NO. Flesher 1212 N-2H
Well Pad Name: Flesher 1212

18)

CASING AND TUBING PROGRAM

TYPE	Size (in)	New or Used	Grade	Weight per ft. (lb/ft)	FOOTAGE: For Drilling (ft)	INTERVALS: Left in Well (ft)	CEMENT: Fill-up (Cu. Ft.)/CTS
Conductor	30"	New	LS	157.5	120'	120'	Drilled In
Fresh Water/Coal	20"	NEW	J-55	94	1000'	1000'	CTS
Intermediate 1	13 3/8"	NEW	J-55 BTC	68	2100'	2100'	CTS
Intermediate 2	9 5/8"	NEW	J-55 BTC	40	2900'	2900'	CTS
Production	5 1/2"	NEW	P-110 HP	23	23855'	23855'	CTS
Tubing							
Liners							

SDW
5/21/2021

TYPE	Size (in)	Wellbore Diameter (in)	Wall Thickness (in)	Burst Pressure (psi)	Anticipated Max. Internal Pressure (psi)	Cement Type	Cement Yield (cu. ft./k)
Conductor	30"	30"	.500				Drilled In
Fresh Water/Coal	20"	26"	.438	2110	1200	Type 1, Class A	40 % excess yield = 1.20, CTS
Intermediate 1	13 3/8"	17 1/2"	.480	3450		Type 1/Class A	Load 40% excess, Tail 0% excess
Intermediate 2	9 5/8"	12 1/4"	.395	3950		Type 1/Class A	Load 40% excess, Tail 0% Excess
Production	5 1/2"	8 1/2"	.415	16240	12500	Type 1/Class A	20% excess yield = 1.10, and yield 1.24
Tubing							
Liners							

RECEIVED
Office of Oil and Gas
MAY 27 2021
12500
WV Department of Environmental Protection

PACKERS

Kind:				
Sizes:				
Depths Set:				

WW-6B
(10/14)

API NO. 47- _____
OPERATOR WELL NO. Flesher 1212 N-2H
Well Pad Name: Flesher 1212

19) Describe proposed well work, including the drilling and plugging back of any pilot hole:

Drill the vertical depth to the Marcellus at an estimated total vertical depth of approximately 6925 feet. Drill horizontal leg to estimated 16,461 lateral length, 23,855 TMD. Hydraulically fracture stimulate and be capable of producing from the Marcellus Formation. Should we encounter an unanticipated void in the coal, we will install a minimum of 20' of casing below the void but not more than 100' below the void, set a basket and grout to surface. We plan to run an ACP above the Gantz/Dominion Storage interval to aid in sealing off and isolating the storage interval.

20) Describe fracturing/stimulating methods in detail, including anticipated max pressure and max rate:

The stimulation will be completed with multiple stages divided over the lateral length of the well. Stage spacing is dependent upon engineering design. Slickwater fracturing technique will be utilized on each stage using sand, water, and chemicals. See attached list. Maximum pressure not to exceed 12,500 psi.

21) Total Area to be disturbed, including roads, stockpile area, pits, etc., (acres): 33.17 acres

22) Area to be disturbed for well pad only, less access road (acres): 6.84 acres

23) Describe centralizer placement for each casing string:

No centralizers will be used with conductor casing.
Freshwater/Coal - centralized every 3 joints to surface.
Intermediate 1 - Bow Spring on every joint, will also be running ACP for isolating storage zone
Intermediate 2 - Bow Spring on first 2 joints then every third joint to 100' from surface.
Production - Run 1 spiral centralizer every 5 joints from the top of the curve to surface. Run 1 spiral centralizer every 3 joints from the 1st 5.5" long joint to the top of the curve.

24) Describe all cement additives associated with each cement type:

Conductor - N/A, Casing to be drilled in w/ Dual Rotary Rig.
Fresh Water/Coal - 15.9 ppg PNE-1 + 3% bwoc CaCl₂, 40% Excess Yield = 1.20, CTS
Intermediate 1 - Lead: 15.4 ppg PNE-1 + 2.5% bwoc CaCl₂, 40% Excess / Tail: 15.9 ppg PNE-1 + 2.5% bwoc CaCl₂ zero% Excess, CTS
Intermediate 2 - Lead: 15.4 ppg PNE-1 + 2.5% bwoc CaCl₂, 40% Excess, Tail: 15.9 ppg, PNE-1 + 2.5% bwoc CaCl₂, zero% Excess, CTS
Production - Lead: 14.5 ppg POZ:PNE-1 + 0.3% bwoc R3 + 1% bwoc EC1 + 0.75 gal/sk FP13L + 0.3% bwoc MPA170, Tail: 14.8 ppg PNE-1 + 0.35% bwoc R3 + 0.75 gal/sk FP13L + 50% bwoc ASCA1 + 0.5% bwoc MPA170 20% Excess, Lead Yield=1.94, CTS

RECEIVED
Office of Oil and Gas
MAY 27 2021
WV Department of
Environmental Protection

25) Proposed borehole conditioning procedures:

Conductor - Ensure the hole is clean at TD.
Fresh Water/Coal - Once casing is at setting depth, circulate a minimum of one hole volume with Fresh Water prior to pumping cement.
Intermediate 1 - Once casing is at setting depth, Circulate and condition at TD. Circulate a minimum of one hole volume prior to pumping cement.
Intermediate 2 - Once casing is at setting depth, Circulate and condition mud at TD. Circulate a minimum of one hole volume prior to pumping cement.
Production - Once on bottom/TD with casing, circulate at max allowable pump rate for at least 2x bottoms up, or until returns and pump pressures indicate the hole is clean. Circulate a minimum of one hole volume prior to pumping cement.

*Note: Attach additional sheets as needed.

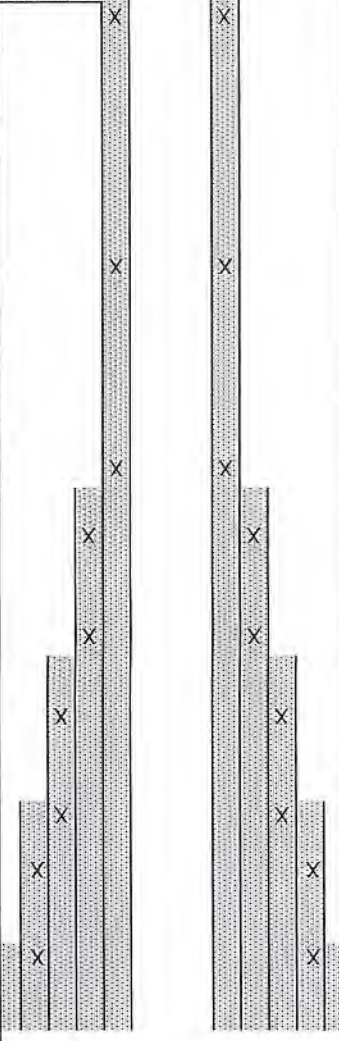


4704105711

1212 N-2H
 Marcellus Shale Horizontal
 Lewis County, WV

1212 N-2H SH	1212 N-2H SH	14206127.01N 1785720.05E	1212 N-2H SH	1212 N-2H SH	1212 N-2H SH	14221866.87N 1779609.66E
1212 N-2H SH	1212 N-2H SH	14206352.07N 1785092E	1212 N-2H SH	1212 N-2H SH	1212 N-2H SH	14221866.87N 1779609.66E
1212 N-2H SH	1212 N-2H SH	14206352.07N 1785092E	1212 N-2H SH	1212 N-2H SH	1212 N-2H SH	14221866.87N 1779609.66E

WELLBORE DIAGRAM	HOLE	CASING	GEOLOGY	TOP	BASE	DEPTH	CENTRALIZERS	CONDITIONING	COMMENTS		
<p>Ground Elevation 1332.2' Azm 340.539°</p>	30"	30" 157.5# LS	Conductor	0	120		N/A	Ensure the hole is clean at TD.	Conductor casing = 0.5" wall thickness		
	26"	20" 94# J-55	Fresh Water	0	273		15.6 ppg PNE-1 + 3% bwoc CaCl	Centralized every 3 joints to surface	Once casing is at setting depth, circulate a minimum of one hole volume with Fresh Water prior to pumping cement.	Surface casing = 0.438" wall thickness Burst=2110 psi	
			Kilniting Coal	987	992		40% Excess				
			Protection	0	1000		Yield=1.20 / CTS				
	17.5"	J-55 BTC 13-3/8" 68#	Big Lime	1548	1613		Lead: 15.4 ppg PNE-1 + 40% Excess / Tail: 15.9 ppg PNE-1 + 2.5% bwoc CaCl	Bow Spring on every joint	Once casing is at setting depth, Circulate and condition at TD. Circulate a minimum of one hole volume prior to pumping cement.	Intermediate casing = 0.480" wall thickness Burst=3450 psi	
			Injun / Gantz (Storage)	1613 / 1898	1718 / 1958		zero% Excess, CTS	ACF for isolating "will also be running storage zone"			
			AIR / KCL Salt Polymer	1613	1718 / 1958		Lead: 15.4 ppg PNE-1 + 40% Excess / Tail: 15.9 ppg PNE-1 + 2.5% bwoc CaCl	Bow Spring on first 2 joints then every third joint to 100' form surface	Once casing is at setting depth, Circulate and condition mud at TD. Circulate a minimum of one hole volume prior to pumping cement.	Intermediate casing = 0.395" wall thickness Burst=3950 psi	
	<p>12.25"</p>	9-5/8" 40# J-55 BTC	Fifty / Thirty Foot	2008 / 2105	2033 / 2128		Lead: 15.4 ppg PNE-1 + 40% Excess / Tail: 15.9 ppg PNE-1 + 2.5% bwoc CaCl	Bow Spring on first 2 joints then every third joint to 100' form surface	Once casing is at setting depth, Circulate and condition mud at TD. Circulate a minimum of one hole volume prior to pumping cement.	Intermediate casing = 0.395" wall thickness Burst=3950 psi	
			Gordon Stray / Gordon	2128 / 2198	2198 / 2288		zero% Excess, CTS				
			Bayard Sand	2450	2480		zero% Excess, CTS				
			Intermediate 2	0	2900		zero% Excess, CTS				
			5th Sand	2374	2416		zero% Excess, CTS				
AIR / KCL Salt Polymer			2198 / 2288	2198 / 2288		Lead: 14.5 ppg POZ:PNE-1 + 0.3% bwoc R3 + 1% bwoc EC1 + 0.75 gal/sk MP170	Run 1 spiral centralizer every 5 joints from the top of the curve to surface.	Once on bottom/TD with casing, circulate at max allowable pump rate for at least 2x bottoms up, or until returns and pump pressure indicate the hole is clean. Circulate a minimum of one hole volume prior to pumping cement.	Production casing = 0.415" wall thickness Burst=16240 psi Note:Actual centralizer schedules may be changed due to hole conditions		
8.5" Curve 23# 5-1/2" P-110 HP CDC HTQ		Rhinestreet	6256	6445		Lead: 14.5 ppg POZ:PNE-1 + 0.3% bwoc R3 + 1% bwoc EC1 + 0.75 gal/sk MP170	Run 1 spiral centralizer every 5 joints from the top of the curve to surface.	Once on bottom/TD with casing, circulate at max allowable pump rate for at least 2x bottoms up, or until returns and pump pressure indicate the hole is clean. Circulate a minimum of one hole volume prior to pumping cement.	Production casing = 0.415" wall thickness Burst=16240 psi Note:Actual centralizer schedules may be changed due to hole conditions		
		Cashagua	6445	6526		MPA170					
		Middlesex	6526	6625		Tail: 14.8 ppg PNE-1 + 0.35% bwoc R3 + 0.75 gal/sk FP13L + 50% bwoc ASCA1 + 0.5% bwoc MPA170	Run 1 spiral centralizer every 3 joints from the top of the curve.	Once on bottom/TD with casing, circulate at max allowable pump rate for at least 2x bottoms up, or until returns and pump pressure indicate the hole is clean. Circulate a minimum of one hole volume prior to pumping cement.	Production casing = 0.415" wall thickness Burst=16240 psi Note:Actual centralizer schedules may be changed due to hole conditions		
		West River	6625	6660		MPA170					
		Burkett	6660	6751		MPA170					
		Tully Limestone	6751	6815		MPA170					
8.5" Lateral	Hamilton	6815	6815		MPA170						
	Marcellus	6845	6927		MPA170						
	TMD / TVD (Production)	23855	6927		MPA170						
	Onondaga	6927	6927		MPA170						
	SOBM	11.5ppg	11.5ppg		MPA170						
	SOBM	12.5ppg	12.5ppg		MPA170						



LP @ 6925' TVD / 7394'
 MD
 8.5" Hole - Cemented Long String
 5-1/2" 23# P-110 HP CDC HTQ
 +/-16451' Lateral
 TD @ +/-6925' TVD
 +/-23855' MD
 X=Centralizers

EXISTING WELLS LOCATED WITHIN THE AREA OF REVIEW FOR:

FLESHER 1212 NORTH UNIT AND PROPOSED WELLS N-1H, N-2H, N-3H, N-4H & N-9H

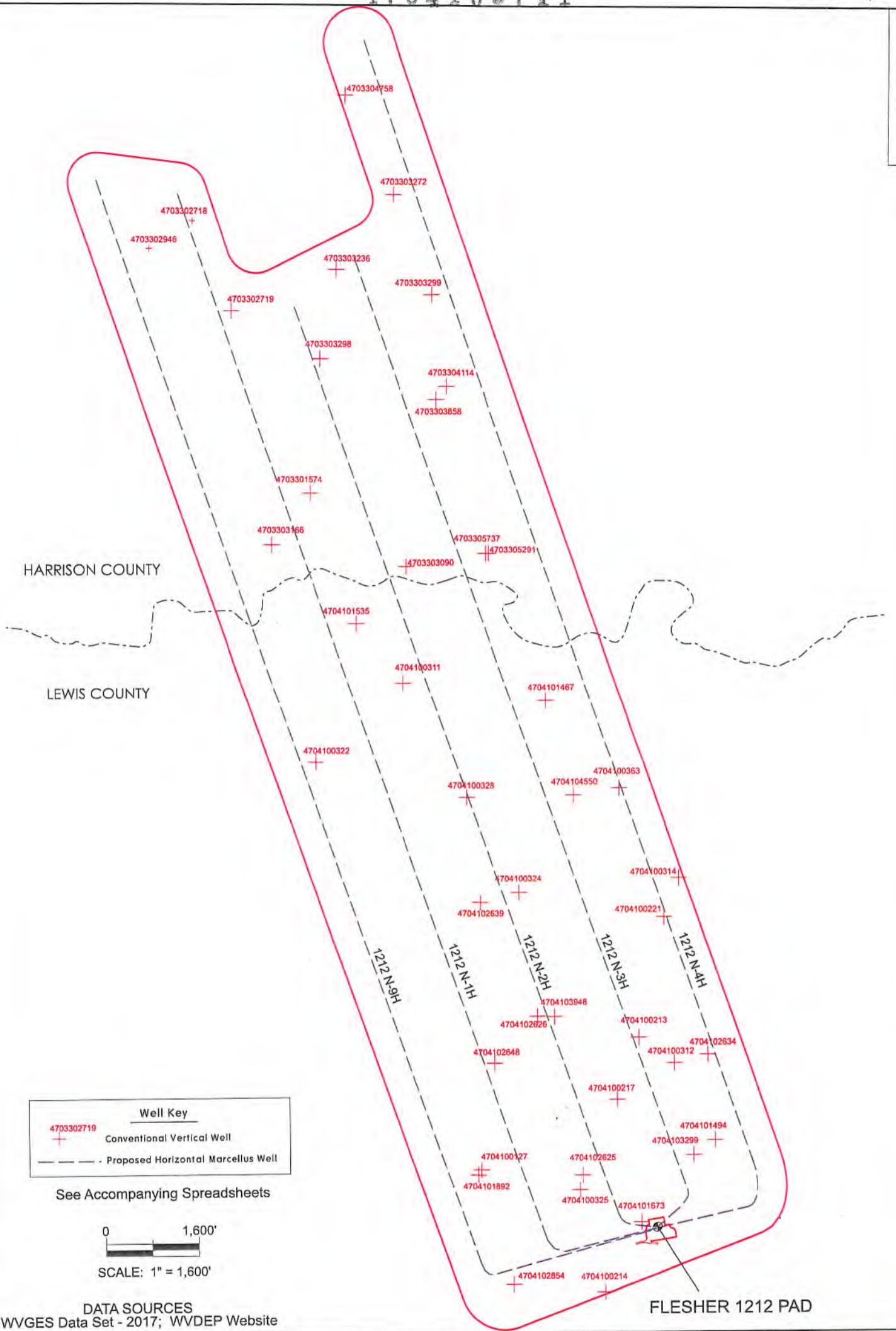
CT	API	COUNTY	FARM	OPERATOR NAME	FORMATION NAME	WELL TYPE	TVD	STATUS	LATITUDE	LONGITUDE
1	4703301574	Harrison	Beeghley	Dominion Energy Transmission, Inc.	Hampshire Grp	Gas	2625	ACTIVE	39.152970	-80.508015
2	4703302718	Harrison	Coffindaaffer, J	Tenmile Land LLC	Elk	Gas	5526	ACTIVE	39.165741	-80.515096
3	4703302719	Harrison	Coffindaaffer, J	Tenmile Land LLC	Elk	Gas	5512	ACTIVE	39.161514	-80.512726
4	4703302946	Harrison	Coffindaaffer, J	Tenmile Land LLC	Elk	Gas	5693	ACTIVE	39.164435	-80.517705
5	4703303090	Harrison	C C Tallman/M P Davis 1	Dominion Energy Transmission, Inc.	Hampshire Grp	Gas	2385	PLUGGED	39.149500	-80.502237
6	4703303166	Harrison	R Stanley	Dominion Energy Transmission, Inc.	Alexander	Gas	5273	ACTIVE	39.150573	-80.510360
7	4703303236	Harrison	William L/S Coffindaaffer	Alliance Petroleum Co., LLC	Greenland Gap Fm	Gas	5200	ACTIVE	39.163430	-80.506373
8	4703303272	Harrison	William L Coffindaaffer	Alliance Petroleum Co., LLC	Greenland Gap Fm	Gas	5000	ACTIVE	39.166933	-80.502915
9	4703303298	Harrison	Loxie V McLung	Alliance Petroleum Co., LLC	Balltown	Oil and Gas	3650	ACTIVE	39.159262	-80.507375
10	4703303299	Harrison	Sherry D Baldwin etal	Alliance Petroleum Co., LLC	Greenland Gap Fm	Gas	5100	ACTIVE	39.162227	-80.500606
11	4703303858	Harrison	Catherine C Price	Diversified Resources, Inc.	not available	not available	-	Not Drilled	39.157331	-80.500374
12	4703304114	Harrison	Catherine C Price 1	Enervest Operating, LLC	Greenland Gap Fm	Gas	4800	ACTIVE	39.157941	-80.499754
13	4703304758	Harrison	Geraldine C Dickenson Est	Dominion Energy Transmission, Inc.	Benson	Gas	4950	ACTIVE	39.171609	-80.505825
14	4703305291	Harrison	William R Dallas	Consol Gas Company	not available	not available	-	Not Drilled	39.150104	-80.497282
15	4703305737	Harrison	William R Dallas	Dominion Energy Transmission, Inc.	Alexander	Gas	4950	ACTIVE	39.150090	-80.497450
16	4704100127	Lewis	Edwin Gaston	Dominion Energy Transmission, Inc.	Fifth	Gas	2380	PLUGGED	39.121173	-80.498140
17	4704100213	Lewis	W T Garton	Dominion Energy Transmission, Inc.	Gantz	Storage	1850	ACTIVE	39.127276	-80.488549
18	4704100214	Lewis	Geo Norris	Dominion Energy Transmission, Inc.	Hampshire Grp	Storage	2275	ACTIVE	39.115382	-80.490758
19	4704100217	Lewis	Edwin Gaston	Dominion Energy Transmission, Inc.	Gantz	Storage	1890	ACTIVE	39.124393	-80.489885
20	4704100221	Lewis	F L Post 2	Dominion Energy Transmission, Inc.	Gantz	Storage	1970	ACTIVE	39.132930	-80.486946
21	4704100311	Lewis	A Hughes	Dominion Energy Transmission, Inc.	Up Devonian	Storage	2199	ACTIVE	39.144083	-80.502504
22	4704100312	Lewis	W T Garton	Dominion Energy Transmission, Inc.	Hampshire Grp	Gas	2263	PLUGGED	39.126053	-80.486425
23	4704100314	Lewis	F L Post	Dominion Energy Transmission, Inc.	Hampshire Grp	Storage	2397	ACTIVE	39.134769	-80.485998
24	4704100322	Lewis	A H Hughes	UNKNOWN	Hampshire Grp	Gas	2601	PLUGGED	39.140364	-80.507823
25	4704100324	Lewis	Clark Gaston	Dominion Energy Transmission, Inc.	Hampshire Grp	Storage	2106	ACTIVE	39.134155	-80.495652
26	4704100325	Lewis	George Norris	Hope Natural Gas Company	Hampshire Grp	Gas	2228	PLUGGED	39.120161	-80.492216
27	4704100328	Lewis	H J Hughes	Dominion Energy Transmission, Inc.	Hampshire Grp	Storage	2401	ACTIVE	39.138624	-80.498743
28	4704100363	Lewis	N J Oldaker	UNKNOWN	Up Devonian	Storage	1905	PLUGGED	39.139006	-80.489544
29	4704101467	Lewis	H J Hughes	UNKNOWN	Fifth	Storage	2407	PLUGGED	39.143186	-80.493922
30	4704101494	Lewis	S R Hall	Dominion Energy Transmission, Inc.	Fifth	Storage	2453	ACTIVE	39.122439	-80.484011
31	4704101535	Lewis	Virginia Hughes	Dominion Energy Transmission, Inc.	Fifth	Dry	2576	PLUGGED	39.146842	-80.505298
32	4704101673	Lewis	Cecil I Dempsey	Dominion Energy Transmission, Inc.	Greenland Gap Fm	Gas	4509	ACTIVE	39.118627	-80.488538
33	4704101892	Lewis	Edwin Gaston	Dominion Energy Transmission, Inc.	Benson	Storage	4470	ACTIVE	39.120917	-80.498325

MAY 27 2021
 WV Department of Environmental Protection
 Division of Oil and Gas

34	4704102625	Lewis	J S Norris	Dominion Energy Transmission, Inc.	not available	Storage	-	ACTIVE	39.120873	-80.492026
35	4704102626	Lewis	A R Frashuer	Dominion Energy Transmission, Inc.	not available	Storage	-	ACTIVE	39.128328	-80.494641
36	4704102634	Lewis	T S Allman	Dominion Energy Transmission, Inc.	not available	Storage	-	ACTIVE	39.126443	-80.484399
37	4704102639	Lewis	H L Frashuer	Dominion Energy Transmission, Inc.	not available	Storage	-	ACTIVE	39.133693	-80.497995
38	4704102648	Lewis	Edwin Gaston	Dominion Energy Transmission, Inc.	not available	Storage	-	ACTIVE	39.126152	-80.497246
39	4704102854	Lewis	J S Norris	Dominion Energy Transmission, Inc.	not available	Storage	-	ACTIVE	39.115783	-80.496273
40	4704103299	Lewis	Susan Hall	Dominion Energy Transmission, Inc.	not available	not available	2368	PLUGGED	39.122284	-80.485081
41	4704103948	Lewis	John Mann	Dominion Energy Transmission, Inc.	Greenland Gap Fm	Gas	4575	ACTIVE	39.128306	-80.493609
42	4704104550	Lewis	R E/Terry Brincefield	Dominion Energy Transmission, Inc.	Greenland Gap Fm	Gas	4618	ACTIVE	39.138691	-80.492300
UPDATED 5/12/2021					YELLOW DENOTES WELL WITH TVD > 4,500'			GREEN DENOTES SURVEYED WELLS		

SOURCE: WVGES DATASET (2020) and WVDEP WEBSITE AND FIELD SURVEYS

RECEIVED
Office of Oil and Gas
MAY 27 2021
WV Department of
Environmental Protection



Area of Review for:

FLESHER 1212 NORTH UNIT

- Proposed 1212 N-1H
- Proposed 1212 N-2H
- Proposed 1212 N-3H
- Proposed 1212 N-4H
- Proposed 1212 N-9H

HG ENERGY, II APPALACHIA, LLC
5260 DuPont Road, Parkersburg, WV 26101

06/11/2021



Freeman's Creek District, Lewis County, W.Va.
& Union District, Harrison County, W.Va.

Updated: 5/12/2021

8,379' to Top Hole

2,582' to Bottom Hole

TOP LATITUDE 39 - 07 - 30
BTM LATITUDE 39 - 10 - 00

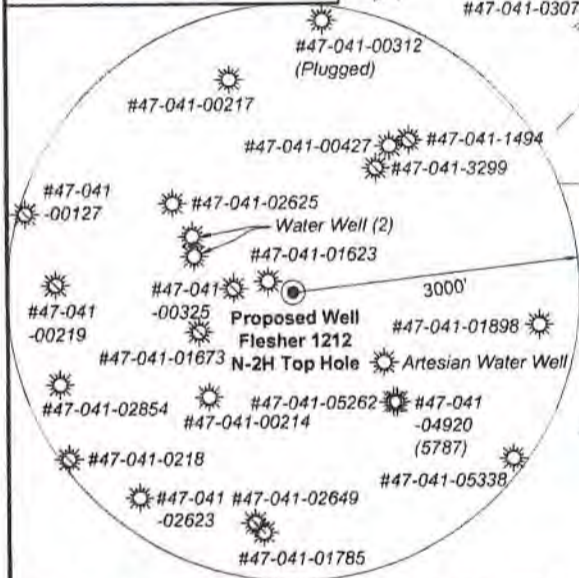
TOP LONGITUDE 80 - 27 - 30
BTM LONGITUDE 80 - 30 - 00

1,848' to Bottom Hole



I, the undersigned, hereby certify that this plat is correct to the best of my knowledge and belief and shows all the information required by law and the rules issued and prescribed by the Department of Environmental Protection.

Kevin S. James
Kevin S. James, P.S. 2305



Note: 2 water wells and 1 artesian well was found within 1500' of proposed well. No occupied dwellings or buildings 2,500 square feet or larger used to house or shelter dairy cattle or poultry husbandry are located within 625' of the center of the well pad.

FILE NO: 156-36-12-U-F-19
DRAWING NO: Flesher 1212 N-2H Well Plat
SCALE: 1" = 2000'
MINIMUM DEGREE OF ACCURACY: Submeter
PROVEN SOURCE OF ELEVATION: CORS, Bridgeport, WV

STATE OF WEST VIRGINIA
DEPARTMENT OF ENVIRONMENTAL PROTECTION
OIL AND GAS DIVISION

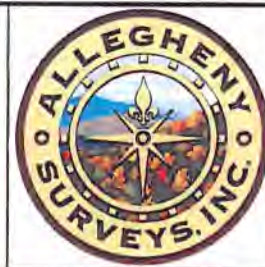
DATE: May 13 2021
OPERATOR'S WELL NO. Flesher 1212 N-2H
API WELL NO MOD
47 - 041 - 05711
STATE COUNTY PERMIT

WELL TYPE: OIL GAS LIQUID INJECTION WASTE DISPOSAL
(IF GAS) PRODUCTION: STORAGE DEEP SHALLOW

LOCATION: ELEVATION: 1,332.2' WATERSHED: Middle West Fork Creek
DISTRICT: Freemans Creek
SURFACE OWNER: H.G. Energy II Appalachia, LLC
ROYALTY OWNER: W.D. Hitt, et al, et al LEASE NO: ACREAGE: 210.00

PROPOSED WORK: DRILL CONVERT DRILL DEEPER FRACTURE OR STIMULATE PLUG OFF OLD FORMATION
 PERFORATE NEW FORMATION OTHER PHYSICAL CHANGE IN WELL (SPECIFY) BH-MOD 6,925' TVD
 PLUG AND ABANDON CLEAN OUT AND REPLUG TARGET FORMATION: Marcellus Shale ESTIMATED DEPTH: 23,855' MD

WELL OPERATOR: HG Energy II Appalachia, LLC DESIGNATED AGENT: Diane C. White
ADDRESS: 5260 Dupont Road ADDRESS: 5260 Dupont Road
Parkersburg, WV 26101 Parkersburg, WV 26101

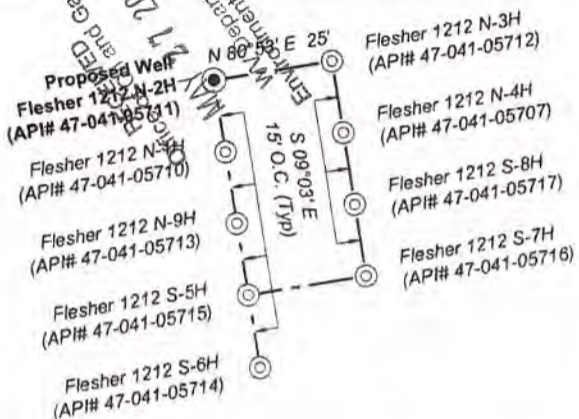


Notes: Well No. Flesher 1212 N-2H
West Virginia Coordinate System of 1927, North Zone
based upon Differential GPS Measurements.
Top Hole coordinates Latitude: 39°07'05.77" Longitude: 80°29'16.33"
Bottom Hole coordinates Latitude: 39°09'41.73" Longitude: 80°30'32.80"
UTM Zone 17, NAD 1983
Top Hole Coordinates N: 4,330,036.173m E: 544,288.559m
Bottom Hole Coordinates N: 4,334,833.697m E: 542,426.109m
Plat orientation and corner and well references are based upon the grid north meridian. Well location references are based upon the magnetic meridian.

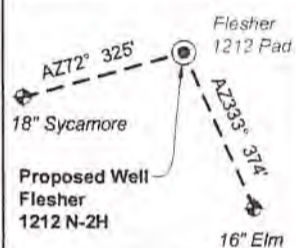
Notes:
Well No. Flesher 1212 N-2H
UTM NAD 1983 (USSF)
Top Hole Coordinates N: 14,206,127.01' E: 1,785,720.05'
Landing Point Coordinates N: 14,206,352.07' E: 1,785,092.01'
Bottom Hole Coordinates N: 14,221,866.87' E: 1,779,609.66'

Tag	Bearing	Dist.	Description
L1	N 42°34' W	1,564.9'	#47-041-05262
L2	N 21°02' E	689.3'	1/2" Rebar
L3	N 66°57' E	1,601.4'	1" Iron pipe
L4	S 34°37' E	1,979.3'	5/8" Rebar
L5	N 70°17' W	667.2'	Landing point

Wellhead Layout (NTS)



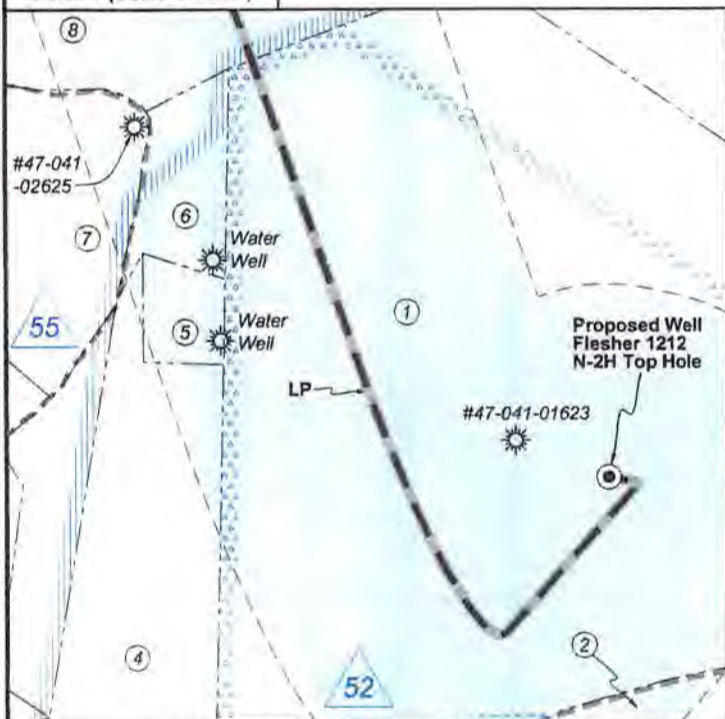
Well Location References
Not to Scale



Legend

- Proposed gas well
- Well Reference, as noted
- Monument, as noted
- Existing Well, as noted
- Digitized Well, as noted
- Creek or Drain
- Existing Road
- Surface boundary (approx.)
- Interior surface tracts (approx.)

Detail 1 (Scale 1"=500')



Detail 2 (Scale 1"=500')



FILE NO: 156-36-12-U-F-19
DRAWING NO: Flesher 1212 N-2H Well Plat
SCALE: 1" = 2000'
MINIMUM DEGREE OF ACCURACY: Submeter
PROVEN SOURCE OF ELEVATION: CORS, Bridgeport, WV

STATE OF WEST VIRGINIA
DEPARTMENT OF ENVIRONMENTAL PROTECTION
OIL AND GAS DIVISION

DATE: May 13 2021
OPERATOR'S WELL NO. Flesher 1212 N-2H
API WELL NO. 47-041-05711
STATE COUNTY PERMIT

WELL TYPE: OIL GAS LIQUID INJECTION WASTE DISPOSAL
(IF GAS) PRODUCTION: STORAGE DEEP SHALLOW

LOCATION: ELEVATION: 1,332.2' WATERSHED: Middle West Fork Creek

DISTRICT: Freemans Creek

SURFACE OWNER: H.G. Energy II Appalachia, LLC

ROYALTY OWNER: W.D. Hitt, et al, et al

LEASE NO: _____ ACREAGE: 210.00

PROPOSED WORK: DRILL CONVERT DRILL DEEPER FRACTURE OR STIMULATE PLUG OFF OLD FORMATION
 PERFORATE NEW FORMATION OTHER PHYSICAL CHANGE IN WELL (SPECIFY) BH-MOD

PLUG AND ABANDON CLEAN OUT AND REPLUG TARGET FORMATION: Marcellus Shale ESTIMATED DEPTH: 23,855' MD

Btm: Big Isaac
Top: Weston
COUNTY: Wayne
ACREAGE: 70.00

WELL OPERATOR: HG Energy II Appalachia, LLC
ADDRESS: 5260 Dupont Road
Parkersburg, WV 26101

DESIGNATED AGENT: Diane C. White
ADDRESS: 5260 Dupont Road
Parkersburg, WV 26101

06/11/2021



RECEIVED
 Office of Oil and Gas
 MAY 27 2021
 WV Department of Environmental Protection

Lewis Co. - Freeman Creek Dist.

No.	TM / Par	Owner	Bk / Pg	Ac.
1	6C / 47	HG Energy II Appalachia, LLC	753 / 453	70.00
2	6C / 43	Gary Allen Sias	646 / 688	50.59
3	6C / 25.1	William Radtka & Helen Burton	655 / 681	5.85
4	6C / 25	Robert M. Painter	629 / 411	27.48
5	6C / 23.8	Richard G. & Loretta E. Hayhurst	673 / 69	1.19
6	6C / 23.11	Richard G. & Loretta E. Hayhurst	718 / 245	2.53
7	6C / 23.3	Richard G. Hayhurst, et ux	566 / 470	19.37
8	6C / 23	Richard G. Hayhurst	566 / 357	34.80
9	6C / 61	Mann Family Trust	617 / 608	49.91
10	6C / 58	Mann Family Trust	617 / 608	7.62
11	6C / 22	Mann Family Trust	617 / 608	265.19
12	6C / 61.1	Susanne Mann & Theodore W. Lanoutte	702 / 38	5.00
13	6B / 30.1	Theodore & Mary C. Eldridge	561 / 257	11.75
14	6B / 31	Mann Family Trust	617 / 608	17.00
15	6B / 32	Mann Family Trust	617 / 608	23.00
16	6B / 33	Robert E. Brincefield Jr. & Terri Lynne Trust, et al	578 / 630	50.05
17	6B / 33.1	Robert E. Brincefield Jr. & Terri Lynne Trust, et al	578 / 630	2.20
18	6B / 13	Mann Family Trust	617 / 608	38.55
19	6B / 28	Robert E. Brincefield Jr. & Terri Lynne Trust, et al	578 / 630	31.00
20	6B / 27	Robert E. Brincefield Jr. & Terri Lynne Trust, et al	578 / 630	14.00
21	6B / 26	Robert E. Brincefield Jr. & Terri Lynne Trust, et al	578 / 630	14.00
22	6B / 36	Robert E. Brincefield Jr. & Terri Lynne Trust, et al	578 / 630	28.00
23	6B / 19.1	Robert E. Brincefield Jr. & Terri Lynne Trust, et al	578 / 630	52.00
24	6B / 25	Robert E. Brincefield Jr. & Terri Lynne Trust, et al	578 / 630	45.00
25	6B / 24	Robert E. Brincefield Jr. & Terri Lynne Trust, et al	578 / 630	11.15
26	6B / 22	Robert E. Brincefield Jr. & Terri Lynne Trust, et al	578 / 630	99.46
27	6B / 21.1	Robert E. Brincefield Jr. & Terri Lynne Trust, et al	578 / 630	44.00
28	6B / 21	Mark D. Roles	W50 / 769	195.91
29	6B / 50	Jackie & Barbara Caplinger	623 / 445	10.49
30	6B / 21.2	Mark D. & Betty Roles	557 / 627	25.47
31	6B / 21.3	Margaret E. Roles	W50 / 769	6.63

ID	Lease
12	Mary Post Davis, et al
14	Fannie M. Hughes, et al
15	Alvadore Hughes, et al
16	Henry Frashuer, et al
19	A.R. Frashuer, et al
23	A.C. Thrash, et al
32	W.H. Coffindaffer, et al
33	J.M. Beeghley, et ux
35	Daisy Lynch, et al
39	Robert Max McDonald, Trustee
40	Loxie V. McClung, et al
45	Edwin Gaston, et al
52	W.D. Hitt, et al
55	J.S. Norris, et al
60	Agnes J. Coffindaffer, et al

Harrison Co. - Union-Outside Dist.

No.	TM / Par	Owner	Bk / Pg	Ac.
32	443 / 8.2	Estella Breise	W197 / 1310	10.00
33	443 / 18	Glennville N. Potts, et ux	677 / 212	0.10
34	443 / 8.1	Estella Breise	W197 / 1310	0.70
35	443 / 8	Amanda Braimantyer	W197 / 1310	53.40
36	443 / 3	Kyle & Luann Baker	1369 / 45	1.00
37	443 / 2.1	Bernard & Darlene Baird	1200 / 919	1.62
38	443 / 2	Lou Ann Baker	1307 / 1155	26.54
39	443 / 6	Amanda Braimantyer	W197 / 1310	0.60
40	443 / 7	Amanda Braimantyer	W197 / 1310	0.57
41	443 / 1	Lou Ann Baker	1323 / 1089	25.14
42	422 / 38	Jody Ross & Dawn Price	1283 / 546	36.77
43	423 / 23	Jeffery & Anessa Griffith	1313 / 1245	25.10
44	423 / 13	Jeffery & Anessa Griffith	1313 / 1245	45.10
45	422 / 37	Jody Ross & Dawn Price	1283 / 546	34.70
46	422 / 35	Jody Ross & Dawn Price	1283 / 546	31.16
47	422 / 36	Sherry D. Baldwin, et al	1531 / 944	2.20
48	423 / 12	Sherry D. Baldwin	1531 / 944	65.39
49	422 / 21	Jeffery & Anessa Griffith	1314 / 173	15.76
50	443 / 5	Amanda Braimantyer	W197 / 1310	0.47
51	443 / 4	Glennville N. Potts, et ux	677 / 212	0.48
52	423 / 11	William L. & Sandra L. Coffindaffer	1157 / 151	94.00
53	422 / 19	William L. & Sandra L. Coffindaffer	1335 / 1091	1.00
54	422 / 18	Stephen J. & Freda P. Perkins	1258 / 66	61.60

FILE NO: 156-36-12-U-F-19
 DRAWING NO: Flesher 1212 N-2H Well Plat
 SCALE: 1" = 2000'
 MINIMUM DEGREE OF ACCURACY:
 Submeter
 PROVEN SOURCE OF ELEVATION:
 CORS, Bridgeport, WV

STATE OF WEST VIRGINIA
 DEPARTMENT OF ENVIRONMENTAL PROTECTION
OIL AND GAS DIVISION

DATE: May 13 2021
 OPERATOR'S WELL NO. Flesher 1212 N-2H
 API WELL NO **MOD**
 47 - 041 - 05711
 STATE COUNTY PERMIT

WELL TYPE: OIL GAS LIQUID INJECTION WASTE DISPOSAL
 (IF GAS) PRODUCTION: STORAGE DEEP SHALLOW

LOCATION: ELEVATION: 1,332.2' WATERSHED: Middle West Fork Creek

Btm: Big Isaac
 QUADRANGLE: Top: Weston

DISTRICT: Freemans Creek

COUNTY: Lewis **06/11/2021**

SURFACE OWNER: H.G. Energy II Appalachia, LLC

ACREAGE: 70.00

ROYALTY OWNER: W.D. Hitt, et al, et al

LEASE NO: _____ ACREAGE: 210.00

PROPOSED WORK: DRILL CONVERT DRILL DEEPER FRACTURE OR STIMULATE PLUG OFF OLD FORMATION
 PERFORATE NEW FORMATION OTHER PHYSICAL CHANGE IN WELL (SPECIFY) BH-MOD

PLUG AND ABANDON CLEAN OUT AND REPLUG TARGET FORMATION: Marcellus Shale ESTIMATED DEPTH: 23,855' MD 6,925' TVD

WELL OPERATOR: HG Energy II Appalachia, LLC

DESIGNATED AGENT: Diane C. White

ADDRESS: 5260 Dupont Road
Parkersburg, WV 26101

ADDRESS: 5260 Dupont Road
Parkersburg, WV 26101

8,379' to Top Hole

2,582' to Bottom Hole

TOP LATITUDE 39 - 07 - 30
BTM LATITUDE 39 - 10 - 00

TOP LONGITUDE 80 - 27 - 30
BTM LONGITUDE 80 - 30 - 00

1,848' to Bottom Hole

Flesher 1212 N-2H
Bottom Hole

Top Hole
7.5' Spot

Bottom
Hole 7.5'
Spot

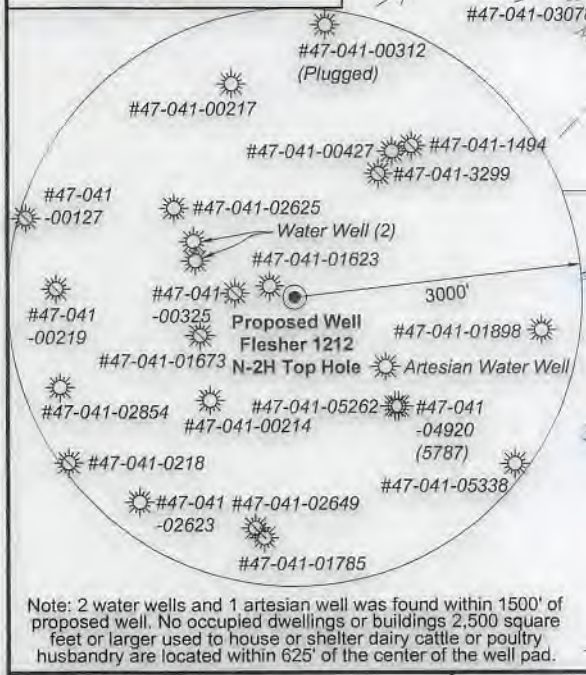


SEAL

I, the undersigned, hereby certify that this plat is correct to the best of my knowledge and belief and shows all the information required by law and the rules issued and prescribed by the Department of Environmental Protection.

Kevin S. James

Kevin S. James, P.S. 2305



Note: 2 water wells and 1 artesian well was found within 1500' of proposed well. No occupied dwellings or buildings 2,500 square feet or larger used to house or shelter dairy cattle or poultry husbandry are located within 625' of the center of the well pad.

FILE NO: 156-36-12-U-F-19
DRAWING NO: Flesher 1212 N-2H Well Plat
SCALE: 1" = 2000'
MINIMUM DEGREE OF ACCURACY: Submeter
PROVEN SOURCE OF ELEVATION: CORS, Bridgeport, WV

STATE OF WEST VIRGINIA
DEPARTMENT OF ENVIRONMENTAL PROTECTION
OIL AND GAS DIVISION

DATE: May 13 2021
OPERATOR'S WELL NO. Flesher 1212 N-2H
API WELL NO. MOD
47 - 041 - 05711
STATE COUNTY PERMIT

WELL TYPE: OIL GAS LIQUID INJECTION WASTE DISPOSAL
(IF GAS) PRODUCTION: STORAGE DEEP SHALLOW

LOCATION: ELEVATION: 1,332.2' WATERSHED: Middle West Fork Creek

QUADRANGLE: Btm: Big Isaac
Top: Weston
COUNTY: Lee 06/11/2021
ACREAGE: 70.00

DISTRICT: Freemans Creek
SURFACE OWNER: H.G. Energy II Appalachia, LLC

ROYALTY OWNER: W.D. Hitt, et al, et al

LEASE NO: ACREAGE: 210.00

PROPOSED WORK: DRILL CONVERT DRILL DEEPER FRACTURE OR STIMULATE PLUG OFF OLD FORMATION
 PERFORATE NEW FORMATION OTHER PHYSICAL CHANGE IN WELL (SPECIFY) BH-MOD 6,925' TVD

PLUG AND ABANDON CLEAN OUT AND REPLUG TARGET FORMATION: Marcellus Shale ESTIMATED DEPTH: 23,855' MD

WELL OPERATOR: HG Energy II Appalachia, LLC
ADDRESS: 5260 Dupont Road
Parkersburg, WV 26101

DESIGNATED AGENT: Diane C. White
ADDRESS: 5260 Dupont Road
Parkersburg, WV 26101

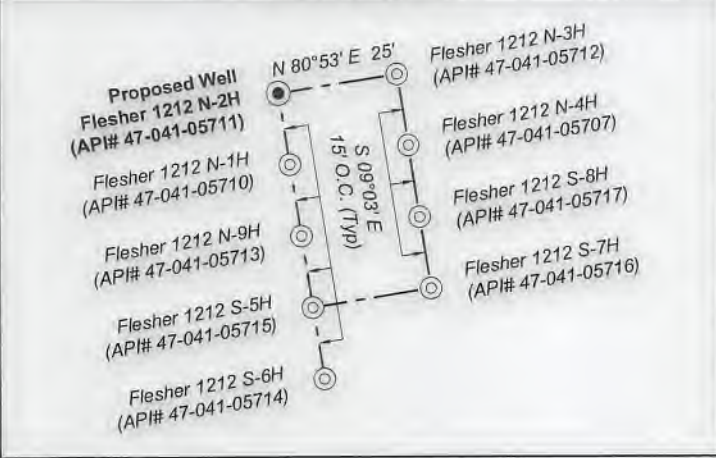


Notes: Well No. Flesher 1212 N-2H
West Virginia Coordinate System of 1927, North Zone
based upon Differential GPS Measurements.
Top Hole coordinates Bottom Hole coordinates
Latitude: 39°07'05.77" Longitude: 39°09'41.73"
Longitude: 80°29'16.33" Longitude: 80°30'32.80"
UTM Zone 17, NAD 1983
Top Hole Coordinates Bottom Hole Coordinates
N: 4,330,036.173m N: 4,334,833.697m
E: 544,288.559m E: 542,426.109m
Plat orientation and corner and well references are
based upon the grid north meridian. Well location
references are based upon the magnetic meridian.

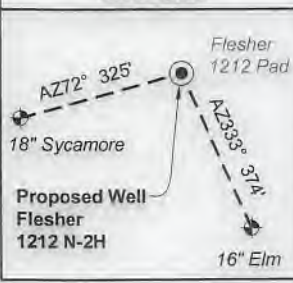
Notes:
Well No. Flesher 1212 N-2H
UTM NAD 1983 (USSF)
Top Hole Coordinates
N: 14,206,127.01'
E: 1,785,720.05'
Landing Point Coordinates
N: 14,206,352.07'
E: 1,785,092.01'
Bottom Hole Coordinates
N: 14,221,866.87'
E: 1,779,609.66'

Tag	Bearing	Dist.	Description
L1	N 42°34' W	1,564.9'	#47-041-05262
L2	N 21°02' E	689.3'	1/2" Rebar
L3	N 66°57' E	1,601.4'	1" Iron pipe
L4	S 34°37' E	1,979.3'	5/8" Rebar
L5	N 70°17' W	667.2'	Landing point

Wellhead Layout (NTS)



Well Location References
Not to Scale



Legend	
	Proposed gas well
	Well Reference, as noted
	Monument, as noted
	Existing Well, as noted
	Digitized Well, as noted
	Creek or Drain
	Existing Road
	Surface boundary (approx.)
	Interior surface tracts (approx.)

Detail 1 (Scale 1"=500')



Detail 2 (Scale 1"=500')



FILE NO: 156-36-12-U-F-19
DRAWING NO: Flesher 1212 N-2H Well Plat
SCALE: 1" = 2000'
MINIMUM DEGREE OF ACCURACY:
Submeter
PROVEN SOURCE OF ELEVATION:
CORS, Bridgeport, WV

STATE OF WEST VIRGINIA
DEPARTMENT OF ENVIRONMENTAL PROTECTION
OIL AND GAS DIVISION

DATE: May 13 2021
OPERATOR'S WELL NO. Flesher 1212 N-2H
API WELL NO MOD
47 - 041 - 05711
STATE COUNTY PERMIT

WELL TYPE: OIL GAS LIQUID INJECTION WASTE DISPOSAL
(IF GAS) PRODUCTION: STORAGE DEEP SHALLOW
LOCATION: ELEVATION: 1,332.2' WATERSHED: Middle West Fork Creek
DISTRICT: Freemans Creek
SURFACE OWNER: H.G. Energy II Appalachia, LLC
ROYALTY OWNER: W.D. Hitt, et al, et al LEASE NO: ACREAGE: 210.00
PROPOSED WORK: DRILL CONVERT DRILL DEEPER FRACTURE OR STIMULATE PLUG OFF OLD FORMATION
 PERFORATE NEW FORMATION OTHER PHYSICAL CHANGE IN WELL (SPECIFY) BH-MOD 6,925' TVD
 PLUG AND ABANDON CLEAN OUT AND REPLUG TARGET FORMATION: Marcellus Shale ESTIMATED DEPTH: 23,855' MD

WELL OPERATOR: HG Energy II Appalachia, LLC DESIGNATED AGENT: Diane C. White
ADDRESS: 5260 Dupont Road ADDRESS: 5260 Dupont Road
Parkersburg, WV 26101 Parkersburg, WV 26101



Lewis Co. - Freeman Creek Dist.				
No.	TM / Par	Owner	Bk / Pg	Ac.
1	6C / 47	HG Energy II Appalachia, LLC	753 / 453	70.00
2	6C / 43	Gary Allen Sias	646 / 688	50.59
3	6C / 25.1	William Radtka & Helen Burton	655 / 681	5.85
4	6C / 25	Robert M. Painter	629 / 411	27.48
5	6C / 23.8	Richard G. & Loretta E. Hayhurst	673 / 69	1.19
6	6C / 23.11	Richard G. & Loretta E. Hayhurst	718 / 245	2.53
7	6C / 23.3	Richard G. Hayhurst, et ux	566 / 470	19.37
8	6C / 23	Richard G. Hayhurst	566 / 357	34.80
9	6C / 61	Mann Family Trust	617 / 608	49.91
10	6C / 58	Mann Family Trust	617 / 608	7.62
11	6C / 22	Mann Family Trust	617 / 608	265.19
12	6C / 61.1	Susanne Mann & Theodore W. Lanoulte	702 / 38	5.00
13	6B / 30.1	Theodore & Mary C. Eldridge	561 / 257	11.75
14	6B / 31	Mann Family Trust	617 / 608	17.00
15	6B / 32	Mann Family Trust	617 / 608	23.00
16	6B / 33	Robert E. Brincefield Jr. & Terri Lynne Trust, et al	578 / 630	50.05
17	6B / 33.1	Robert E. Brincefield Jr. & Terri Lynne Trust, et al	578 / 630	2.20
18	6B / 13	Mann Family Trust	617 / 608	38.55
19	6B / 28	Robert E. Brincefield Jr. & Terri Lynne Trust, et al	578 / 630	31.00
20	6B / 27	Robert E. Brincefield Jr. & Terri Lynne Trust, et al	578 / 630	14.00
21	6B / 26	Robert E. Brincefield Jr. & Terri Lynne Trust, et al	578 / 630	14.00
22	6B / 36	Robert E. Brincefield Jr. & Terri Lynne Trust, et al	578 / 630	28.00
23	6B / 19.1	Robert E. Brincefield Jr. & Terri Lynne Trust, et al	578 / 630	52.00
24	6B / 25	Robert E. Brincefield Jr. & Terri Lynne Trust, et al	578 / 630	45.00
25	6B / 24	Robert E. Brincefield Jr. & Terri Lynne Trust, et al	578 / 630	11.15
26	6B / 22	Robert E. Brincefield Jr. & Terri Lynne Trust, et al	578 / 630	99.46
27	6B / 21.1	Robert E. Brincefield Jr. & Terri Lynne Trust, et al	578 / 630	44.00
28	6B / 21	Mark D. Roles	W50 / 769	195.91
29	6B / 50	Jackie & Barbara Caplinger	623 / 445	10.49
30	6B / 21.2	Mark D. & Betty Roles	557 / 627	25.47
31	6B / 21.3	Margaret E. Roles	W50 / 769	6.63

ID	Lease
12	Mary Post Davis, et al
14	Fannie M. Hughes, et al
15	Alvadore Hughes, et al
16	Henry Frashuer, et al
19	A.R. Frashuer, et al
23	A.C. Thrash, et al
32	W.H. Coffindaffer, et al
33	J.M. Beeghley, et ux
35	Daisy Lynch, et al
39	Robert Max McDonald, Trustee
40	Loxie V. McClung, et al
45	Edwin Gaston, et al
52	W.D. Hitt, et al
55	J.S. Norris, et al
60	Agnes J. Coffindaffer, et al

Harrison Co. - Union-Outside Dist.				
No.	TM / Par	Owner	Bk / Pg	Ac.
32	443 / 8.2	Estella Breise	W197 / 1310	10.00
33	443 / 18	Glennville N. Potts, et ux	677 / 212	0.10
34	443 / 8.1	Estella Breise	W197 / 1310	0.70
35	443 / 8	Amanda Braimantyer	W197 / 1310	53.40
36	443 / 3	Kyle & Luann Baker	1369 / 45	1.00
37	443 / 2.1	Bernard & Darlene Baird	1200 / 919	1.62
38	443 / 2	Lou Ann Baker	1307 / 1155	26.54
39	443 / 6	Amanda Braimantyer	W197 / 1310	0.60
40	443 / 7	Amanda Braimantyer	W197 / 1310	0.57
41	443 / 1	Lou Ann Baker	1323 / 1089	25.14
42	422 / 38	Jody Ross & Dawn Price	1283 / 546	36.77
43	423 / 23	Jeffery & Anessa Griffith	1313 / 1245	25.10
44	423 / 13	Jeffery & Anessa Griffith	1313 / 1245	45.10
45	422 / 37	Jody Ross & Dawn Price	1283 / 546	34.70
46	422 / 35	Jody Ross & Dawn Price	1283 / 546	31.16
47	422 / 36	Sherry D. Baldwin, et al	1531 / 944	2.20
48	423 / 12	Sherry D. Baldwin	1531 / 944	65.39
49	422 / 21	Jeffery & Anessa Griffith	1314 / 173	15.76
50	443 / 5	Amanda Braimantyer	W197 / 1310	0.47
51	443 / 4	Glennville N. Potts, et ux	677 / 212	0.48
52	423 / 11	William L. & Sandra L. Coffindaffer	1157 / 151	94.00
53	422 / 19	William L. & Sandra L. Coffindaffer	1335 / 1091	1.00
54	422 / 18	Stephen J. & Freda P. Perkins	1258 / 66	61.60

FILE NO: 156-36-12-U-F-19
DRAWING NO: Flesher 1212 N-2H Well Plat
SCALE: 1" = 2000'
MINIMUM DEGREE OF ACCURACY:
Submeter
PROVEN SOURCE OF ELEVATION:
CORS, Bridgeport, WV

STATE OF WEST VIRGINIA
DEPARTMENT OF ENVIRONMENTAL PROTECTION
OIL AND GAS DIVISION

DATE: May 13 2021
OPERATOR'S WELL NO. Flesher 1212 N-2H
API WELL NO
47 - 041 - 05711
STATE COUNTY PERMIT

WELL TYPE: OIL GAS LIQUID INJECTION WASTE DISPOSAL
(IF GAS) PRODUCTION: STORAGE DEEP SHALLOW

LOCATION: ELEVATION: 1,332.2' WATERSHED: Middle West Fork Creek

Btm: Big Isaac
QUADRANGLE: Top: Weston

DISTRICT: Freemans Creek

COUNTY: **06/11/2021**

SURFACE OWNER: H.G. Energy II Appalachia, LLC

ACREAGE: 70.00

ROYALTY OWNER: W.D. Hitt, et al, et al

LEASE NO: ACREAGE: 210.00

PROPOSED WORK: DRILL CONVERT DRILL DEEPER FRACTURE OR STIMULATE PLUG OFF OLD FORMATION
 PERFORATE NEW FORMATION OTHER PHYSICAL CHANGE IN WELL (SPECIFY) BH-MOD 6,925' TVD

PLUG AND ABANDON CLEAN OUT AND REPLUG TARGET FORMATION: Marcellus Shale ESTIMATED DEPTH: 23,855' MD

WELL OPERATOR: HG Energy II Appalachia, LLC

DESIGNATED AGENT: Diane C. White

ADDRESS: 5260 Dupont Road
Parkersburg, WV 26101

ADDRESS: 5260 Dupont Road
Parkersburg, WV 26101

WW-6A1
(5/13)

Operator's Well No. Flesher 1212 N-2H

**INFORMATION SUPPLIED UNDER WEST VIRGINIA CODE
Chapter 22, Article 6A, Section 5(a)(5)
IN LIEU OF FILING LEASE(S) AND OTHER CONTINUING CONTRACT(S)**

Under the oath required to make the verification on page 1 of this Notice and Application, I depose and say that I am the person who signed the Notice and Application for the Applicant, and that –

(1) the tract of land is the same tract described in this Application, partly or wholly depicted in the accompanying plat, and described in the Construction and Reclamation Plan;

(2) the parties and recordation data (if recorded) for lease(s) or other continuing contract(s) by which the Applicant claims the right to extract, produce or market the oil or gas are as follows:

Lease Name or Number	Grantor, Lessor, etc.	Grantee, Lessee, etc.	Royalty	Book/Page
----------------------	-----------------------	-----------------------	---------	-----------

See Attached Sheets

**Acknowledgement of Possible Permitting/Approval
In Addition to the Office of Oil and Gas**

The permit applicant for the proposed well work addressed in this application hereby acknowledges the possibility of the need for permits and/or approvals from local, state, or federal entities in addition to the Office of Oil and Gas, including but not limited to the following:

- WV Division of Water and Waste Management
- WV Division of Natural Resources
- WV Division of Highways
- U.S. Army Corps of Engineers
- U.S. Fish and Wildlife Service
- County Floodplain Coordinator

The applicant further acknowledges that any Office of Oil and Gas permit in no way overrides, replaces, or nullifies the need for other permits/approvals that may be necessary and further affirms that all needed permits/approvals should be acquired from the appropriate authority before the affected activity is initiated.

Well Operator: HG Energy II Appalachia, LLC
 By: Diane White *Diane White*
 Its: Accountant

RECEIVED
Office of Oil and Gas
MAY 9 2021
WV Department of
Environmental Protection

HG Energy II Appalachia, LLC - Flesher 1212 N-2H Lease Chain

1212N Tract	LEGACY LEASE NUMBER	TAX MAP	LEASE NUMBER	GRANTOR/LESSOR	GRANTEE/LESSEE	ROYALTY	DEED BOOK	PAGE				
52	FK053270	03-006C-0045-0000 03-006C-0046-0000 03-006C-0053-0000 03-006C-0054-0000 03-007C-0007-0000 p/o 03-006C-0043-0000 p/o 03-006C-0043-0001 p/o 03-006C-0047-0000	Q100675000	W. D. HITT AND ALDA HITT, HIS WIFE; J. C. HITT AND DORA HITT, HIS WIFE; L.A. MCCARTY AND F. R. MCCARTY, HER HUSBAND; GEORGE W. NEELY AND GRACE M. NEELY, HIS WIFE	RESERVE GAS COMPANY	NOT LESS THAN 1/8	68	524				
				RESERVE GAS COMPANY	HOPE NATURAL GAS COMPANY	CONFIRMATORY DEED	155	202				
				HOPE NATURAL GAS COMPANY	CONSOLIDATED GAS SUPPLY CORPORATION	CONFIRMATORY DEED	294	89				
				CONSOLIDATED GAS SUPPLY CORPORATION	CONSOLIDATED GAS TRANSMISSION CORPORATION	ASSIGNMENT	425	127				
				CONSOLIDATED GAS TRANSMISSION CORPORATION	CNG TRANSMISSION CORPORATION	MERGER/NAME CHANGE	WVSOS					
				CNG TRANSMISSION CORPORATION	DOMINION TRANSMISSION, INC.	MERGER/NAME CHANGE	WVSOS					
				DOMINION TRANSMISSION, INC.	CNX GAS COMPANY LLC	MEMORANDUM FARMOUT AGREEMENT	672	154				
				CNX GAS COMPANY LLC	NOBLE ENERGY, INC.	LIMITED PARTIAL ASSIGNMENT (50%)	684	57				
				DOMINION TRANSMISSION, INC.	CNX GAS COMPANY LLC AND NOBLE ENERGY, INC.	PARTIAL ASSIGNMENT (32%)	712	848				
				CNX GAS COMPANY LLC	NOBLE ENERGY, INC.	ASSIGNMENT	717	1				
				NOBLE ENERGY, INC.	HG ENERGY II APPALACHIA, LLC	ASSIGNMENT	722	139				
				DOMINION TRANSMISSION, INC.	DOMINION ENERGY TRANSMISSION, INC.	MERGER/NAME CHANGE	WVSOS					
				DOMINION ENERGY TRANSMISSION, INC.	HG ENERGY II APPALACHIA, LLC	SECOND AMENDMENT TO MEMORANDUM OF FARMOUT AGREEMENT	723	499				
				DOMINION ENERGY TRANSMISSION, INC.	HG ENERGY II APPALACHIA, LLC	THIRD AMENDMENT TO MEMORANDUM OF FARMOUT AGREEMENT	734	558				
				DOMINION ENERGY TRANSMISSION, INC.	HG ENERGY II APPALACHIA, LLC	ASSIGNMENT (68%)	736	220				
				55	FK053181	03-006C-0023-0000 03-006C-0023-0001 03-006C-0023-0002 03-006C-0023-0003 03-006C-0023-0004 03-006C-0023-0005 03-006C-0023-0006 03-006C-0023-0007 03-006C-0023-0008 03-006C-0023-0009 03-006C-0023-0010 03-006C-0021-0000	Q101024000	J. S. NORRIS AND GEO. NORRIS AND L. N. NORRIS, HIS WIFE	SOUTH PENN OIL COMPANY	NOT LESS THAN 1/8	42	122
								SOUTH PENN OIL COMPANY	HOPE NATURAL GAS COMPANY	ASSIGNMENT	85	127
HOPE NATURAL GAS COMPANY	RESERVE GAS COMPANY	ASSIGNMENT	79					370				
SOUTH PENN OIL COMPANY	RESERVE GAS COMPANY	ASSIGNMENT	79					237				
RESERVE GAS COMPANY	HOPE NATURAL GAS COMPANY	CONFIRMATORY DEED	155					202				
HOPE NATURAL GAS COMPANY	CONSOLIDATED GAS SUPPLY CORPORATION	CONFIRMATORY DEED	294					89				
CONSOLIDATED GAS SUPPLY CORPORATION	CONSOLIDATED GAS TRANSMISSION CORPORATION	ASSIGNMENT	425					127				
CONSOLIDATED GAS TRANSMISSION CORPORATION	CNG TRANSMISSION CORPORATION	MERGER/NAME CHANGE	WVSOS									
CNG TRANSMISSION CORPORATION	DOMINION TRANSMISSION, INC.	MERGER/NAME CHANGE	WVSOS									
DOMINION TRANSMISSION, INC.	CNX GAS COMPANY LLC	MEMORANDUM OF FARMOUT AGREEMENT	672					154				
DOMINION TRANSMISSION, INC.	CNX GAS COMPANY LLC	POWER OF ATTORNEY	21					81				
CNX GAS COMPANY LLC	NOBLE ENERGY, INC.	LIMITED PARTIAL ASSIGNMENT (50%)	684					57				
DOMINION TRANSMISSION, INC.	CNX GAS COMPANY LLC AND NOBLE ENERGY, INC.	PARTIAL ASSIGNMENT (32%)	712					848				
CNX GAS COMPANY LLC	NOBLE ENERGY, INC.	ASSIGNMENT	717					1				
NOBLE ENERGY, INC.	HG ENERGY II APPALACHIA, LLC	ASSIGNMENT	722					139				
NOBLE ENERGY, INC.	HG ENERGY II APPALACHIA, LLC	ASSIGNMENT	722					170				
DOMINION TRANSMISSION, INC.	DOMINION ENERGY TRANSMISSION, INC.	MERGER/NAME CHANGE	WVSOS									
DOMINION ENERGY TRANSMISSION, INC.	HG ENERGY II APPALACHIA, LLC	SECOND AMENDMENT TO MEMORANDUM OF FARMOUT AGREEMENT	723	499								
DOMINION ENERGY TRANSMISSION, INC.	HG ENERGY II APPALACHIA, LLC	THIRD AMENDMENT TO MEMORANDUM OF FARMOUT AGREEMENT	734	558								
DOMINION ENERGY TRANSMISSION, INC.	HG ENERGY II APPALACHIA, LLC	ASSIGNMENT (68%)	736	220								
45	FK053267	Mapped as 03-006B-0029-0000 03-006B-0048-0000 03-006C-0022-0000 Assessed as 03-006C-0022-0000	Q100387000 FEEHGII0066	EDWIN GASTON AND LAURA L. GASTON, HUSBAND; W. GASTON AND IDA GASTON, HIS WIFE; W. GASTON AND SUSAN GASTON, HIS WIFE; I. V. GASTON	RESERVE GAS COMPANY	NOT LESS THAN 1/8	71	318				
				RESERVE GAS COMPANY	HOPE NATURAL GAS COMPANY	ASSIGNMENT	155	202				
				HOPE NATURAL GAS COMPANY	CONSOLIDATED GAS SUPPLY CORPORATION	CONFIRMATORY DEED	294	89				
				CONSOLIDATED GAS SUPPLY CORPORATION	CONSOLIDATED GAS TRANSMISSION CORPORATION	ASSIGNMENT	425	127				
				CONSOLIDATED GAS TRANSMISSION CORPORATION	CNG TRANSMISSION CORPORATION	MERGER/NAME CHANGE	WVSOS					
				CNG TRANSMISSION CORPORATION	DOMINION TRANSMISSION, INC.	MERGER/NAME CHANGE	WVSOS					
				DOMINION TRANSMISSION, INC.	CNX GAS COMPANY LLC	MEMORANDUM OF FARMOUT AGREEMENT	672	154				
				DOMINION TRANSMISSION, INC.	CNX GAS COMPANY LLC	POWER OF ATTORNEY	21	81				
				CNX GAS COMPANY LLC	NOBLE ENERGY, INC.	LIMITED PARTIAL ASSIGNMENT (50%)	684	57				
				DOMINION TRANSMISSION, INC.	CNX GAS COMPANY LLC AND NOBLE ENERGY, INC.	PARTIAL ASSIGNMENT (32%)	712	848				

Environmental Protection
 Office of Oil and Gas
 27 2021
 RECEIVED

		03-006C-0022-0001 03-006C-0058-0000 03-006C-0061-0000		CNX GAS COMPANY LLC	NOBLE ENERGY, INC.	ASSIGNMENT	717	1
				NOBLE ENERGY, INC.	HG ENERGY II APPALACHIA, LLC	ASSIGNMENT	722	139
				NOBLE ENERGY, INC.	HG ENERGY II APPALACHIA, LLC	ASSIGNMENT	722	170
				DOMINION TRANSMISSION, INC.	DOMINION ENERGY TRANSMISSION, INC.	MERGER/NAME CHANGE	WVSOS	
				DOMINION ENERGY TRANSMISSION, INC.	HG ENERGY II APPALACHIA, LLC	SECOND AMENDMENT TO MEMORANDUM OF FARMOUT AGREEMENT	723	499
				DOMINION ENERGY TRANSMISSION, INC.	HG ENERGY II APPALACHIA, LLC	THIRD AMENDMENT TO MEMORANDUM OF FARMOUT AGREEMENT	734	558
				DOMINION ENERGY TRANSMISSION, INC.	HG ENERGY II APPALACHIA, LLC	ASSIGNMENT (68%)	736	220
19	FK053186	03-006B-0013-0000 03-006B-0031-0000 03-006B-0032-0000 03-006B-0033-0000	Q100920000	A. R. FRASHUER AND VICTORIA FRASHUER, HIS WIFE	SOUTH PENN OIL COMPANY	NOT LESS THAN 1/8	42	68
				SOUTH PENN OIL COMPANY	HOPE NATURAL GAS COMPANY	ASSIGNMENT	85	127
				HOPE NATURAL GAS COMPANY	RESERVE GAS COMPANY	ASSIGNMENT	79	370
				SOUTH PENN OIL COMPANY	RESERVE GAS COMPANY	ASSIGNMENT	79	237
				RESERVE GAS COMPANY	HOPE NATURAL GAS COMPANY	MERGER/NAME CHANGE	155	202
				HOPE NATURAL GAS COMPANY	CONSOLIDATED GAS SUPPLY CORPORATION	CONFIRMATORY DEED	294	89
				CONSOLIDATED GAS SUPPLY CORPORATION	CONSOLIDATED GAS TRANSMISSION CORPORATION	ASSIGNMENT	425	127
				CONSOLIDATED GAS COMPANY	CNG TRANSMISSION CORPORATION	MERGER/NAME CHANGE	WVSOS	
				CNG TRANSMISSION CORPORATION	DOMINION TRANSMISSION, INC.	MERGER/NAME CHANGE	WVSOS	
				DOMINION TRANSMISSION, INC.	CNX GAS COMPANY LLC	MEMORANDUM OF FARMOUT AGREEMENT	672	154
				CNX GAS COMPANY LLC	NOBLE ENERGY, INC.	LIMITED PARTIAL ASSIGNMENT (50%)	684	57
				DOMINION TRANSMISSION, INC.	CNX GAS COMPANY LLC AND NOBLE ENERGY, INC.	PARTIAL ASSIGNMENT (32%)	712	848
				CNX GAS COMPANY LLC	NOBLE ENERGY, INC.	ASSIGNMENT	717	1
				NOBLE ENERGY, INC.	HG ENERGY II APPALACHIA, LLC	ASSIGNMENT	722	139
				NOBLE ENERGY, INC.	HG ENERGY II APPALACHIA, LLC	ASSIGNMENT	722	170
				DOMINON TRANSMISSION, INC.	DOMINION ENERGY TRANSMISSION, INC.	MERGER/NAME CHANGE	WVSOS	
				DOMINION ENERGY TRANSMISSION, INC.	HG ENERGY II APPALACHIA, LLC	SECOND AMENDMENT TO MEMORANDUM OF FARMOUT AGREEMENT	723	499
				DOMINION ENERGY TRANSMISSION, INC.	HG ENERGY II APPALACHIA, LLC	THIRD AMENDMENT TO MEMORANDUM OF FARMOUT AGREEMENT	734	558
				DOMINION ENERGY TRANSMISSION, INC.	HG ENERGY II APPALACHIA, LLC	ASSIGNMENT (68%)	736	220
16	FK053251	03-006B-0026-0000 03-006B-0027-0000 03-006B-0028-0000	Q100484000	HENRY L. FRASHUER AND ICIE FRASHUER, HIS WIFE; AND WILLIAM J. FRASHUER AND DORA E. FRASHUER, HIS WIFE	RESERVE GAS COMPANY	NOT LESS THAN 1/8	68	284
				HENRY L. FRASHUER AND ICIE FRASHUER, HIS WIFE; AND WILLIAM J. FRASHUER AND DORA E. FRASHUER, HIS WIFE; AND AMANDA I. HARTLEY AND J. J. HARTLEY, HER HSBAND	RESERVE GAS COMPANY	NOT LESS THAN 1/8	73	154
				RESERVE GAS COMPANY	HOPE NATURAL GAS COMPANY	MERGER/NAME CHANGE	155	202
				HOPE NATURAL GAS COMPANY	CONSOLIDATED GAS SUPPLY CORPORATION	CONFIRMATORY DEED	294	89
				CONSOLIDATED GAS SUPPLY CORPORATION	CONSOLIDATED GAS TRANSMISSION CORPORATION	ASSIGNMENT	425	127
				CONSOLIDATED GAS TRANSMISSION CORPORATION	CNG TRANSMISSION CORPORATION	MERGER/NAME CHANGE	WVSOS	
				CNG TRANSMISSION CORPORATION	DOMINION TRANSMISSION, INC.	MERGER/NAME CHANGE	WVSOS	
				DOMINION TRANSMISSION, INC.	CNX GAS COMPANY LLC	MEMORANDUM OF FARMOUT AGREEMENT	672	154
				CNX GAS COMPANY LLC	NOBLE ENERGY, INC.	LIMITED PARTIAL ASSIGNMENT (50%)	684	57
				DOMINION TRANSMISSION, INC.	CNX GAS COMPANY LLC AND NOBLE ENERGY, INC.	PARTIAL ASSIGNMENT (32%)	712	848
				CNX GAS COMPANY LLC	NOBLE ENERGY, INC.	ASSIGNMENT	171	1
				NOBLE ENERGY, INC.	HG ENERGY II APPALACHIA, LLC	ASSIGNMENT	722	139
				NOBLE ENERGY, INC.	HG ENERGY II APPALACHIA, LLC	ASSIGNMENT	722	170
				DOMINION TRANSMISSION, INC.	DOMINION ENERGY TRANSMISSION, INC.	MERGER/NAME CHANGE	WVSOS	
				DOMINION ENERGY TRANSMISSION, INC.	HG ENERGY II APPALACHIA, LLC	SECOND AMENDMENT TO MEMORANDUM OF FARMOUT AGREEMENT	723	499
				DOMINION ENERGY TRANSMISSION, INC.	HG ENERGY II APPALACHIA, LLC	THIRD AMENDMENT TO MEMORANDUM OF FARMOUT AGREEMENT	734	558
				DOMINION ENERGY TRANSMISSION, INC.	HG ENERGY II APPALACHIA, LLC	ASSIGNMENT (68%)	736	220

RECEIVED
 Division of Oil and Gas
 Administration
 March 17 2021

14	FK062423	03-006B-0024-0000 03-006B-0025-0000 03-006B-0036-0000 p/o 03-006B-0037-0001	Q100396000	FANNIE M. HUGHES; HOWARD G. HUGHES AND MYRL R. HUGHES, HIS WIFE; OLA OAKES AND FINLEY OAKES, HER HUSBAND; AUDREY H. KEYS AND C. C. KEYS, HER HUSBAND; MARIE WALKER AND L. J. WALKER, HER HUSBAND; FLODA HUGHES LAYMAN; EVADNEY HUGHES; JAMES A. HUGHES AND HAZEL D. HUGHES, HIS WIFE; C. B. MARTIN AND ANNA H. MARTIN, HIS WIFE; BEATRICE COTTRELL JONES AND H. E. JONES, HER HUSBAND, GLENOLA ROSENCRANCE AND K. K. ROSENCRANCE, HER HUSBAND; KATHRYN C. JEFFERSON AND AUL L. JEFFERSON, HER HUSBAND; VIRGINIA C. WILEY AND A. V. WILEY, HER HUSBAND; LOLA MARTIN, PAULINE WALSH AND MARTIN WALSH, HER HUSBAND; ALLEN HUGHES AND RUBY HUGHES, HIS WIFE	HOPE NATURAL GAS COMPANY	NOT LESS THAN 1/8	213	279
				HOPE NATURAL GAS COMPANY	CONSOLIDATED GAS SUPPLY CORPORATION	CONFIRMATORY DEED	294	89
				CONSOLIDATED GAS SUPPLY CORPORATION	CONSOLIDATED GAS TRANSMISSION CORPORATION	ASSIGNMENT	425	127
				CONSOLIDATED GAS TRANSMISSION CORPORATION	CNG TRANSMISSION CORPORATION	MERGER/NAME CHANGE	WVSOS	
				CNG TRANSMISSION CORPORATION	DOMINION TRANSMISSION, INC.	MERGER/NAME CHANGE	WVSOS	
				DOMINION TRANSMISSION, INC.	CNX GAS COMPANY LLC	MEMORANDUM OF FARMOUT AGREEMENT	672	154
				CNX GAS COMPANY LLC	NOBLE ENERGY, INC.	LIMITED PARTIAL ASSIGNMENT (50%)	684	57
				DOMINION TRANSMISSION, INC.	CNX GAS COMPANY LLC AND NOBLE ENERGY, INC.	PARTIAL ASSIGNMENT (32%)	712	848
				CNX GAS COMPANY LLC	NOBLE ENERGY, INC.	ASSIGNMENT	717	1
				NOBLE ENERGY, INC.	HG ENERGY II APPALACHIA, LLC	ASSIGNMENT	722	139
				NOBLE ENERGY, INC.	HG ENERGY II APPALACHIA, LLC	ASSIGNMENT	722	170
				DOMINON TRANSMISSION, INC.	DOMINION ENERGY TRANSMISSION, INC.	MERGER/NAME CHANGE	WVSOS	
				DOMINION ENERGY TRANSMISSION, INC.	HG ENERGY II APPALACHIA, LLC	SECOND AMENDMENT TO MEMORANDUM OF FARMOUT AGREEMENT	723	499
				DOMINION ENERGY TRANSMISSION, INC.	HG ENERGY II APPALACHIA, LLC	THIRD AMENDMENT TO MEMORANDUM OF FARMOUT AGREEMENT	734	558
				DOMINION ENERGY TRANSMISSION, INC.	HG ENERGY II APPALACHIA, LLC	ASSIGNMENT (68%)	736	220
				23	FK062057	03-006B-0023-0000 03-006B-0022-0000	Q100500000	A. C. THRASH AND MARTHA D. THRASHER, HIS WIFE; HOWARD G. HUGHES AND MYRL R. HUGHES, HIS WIFE; FANNIE M. HUGHES; AUDREY H. KEYS AND C. C. KEYS, HER HUSBAND; FODA HUGHES LAYMAN
HOPE NATURAL GAS COMPANY	CONSOLIDATED GAS SUPPLY CORPORATION	CONFIRMATORY DEED	294					89
CONSOLIDATED GAS SUPPLY CORPORATION	CONSOLIDATED GAS TRANSMISSION CORPORATION	ASSIGNMENT	425					127
CONSOLIDATED GAS TRANSMISSION CORPORATION	CNG TRANSMISSION CORPORATION	MERGER/NAME CHANGE	WVSOS					
CNG TRANSMISSION CORPORATION	DOMINION TRANSMISSION, INC.	MERGER/NAME CHANGE	WVSOS					
DOMINION TRANSMISSION, INC.	CNX GAS COMPANY LLC	MEMORANDUM OF FARMOUT AGREEMENT	672					154
CNX GAS COMPANY LLC	NOBLE ENERGY, INC.	LIMITED PARTIAL ASSIGNMENT (50%)	684					57
DOMINION TRANSMISSION, INC.	CNX GAS COMPANY LLC AND NOBLE ENERGY	PARTIAL ASSIGNMENT (32%)	712					848
CNX GAS COMPANY LLC	NOBLE ENERGY, INC.	ASSIGNMENT	717					1
NOBLE ENERGY, INC.	HG ENERGY II APPALACHIA, LLC	ASSIGNMENT	722					139
NOBLE ENERGY, INC.	HG ENERGY II APPALACHIA, LLC	ASSIGNMENT	722					170
DOMINON TRANSMISSION, INC.	DOMINION ENERGY TRANSMISSION, INC.	MERGER/NAME CHANGE	WVSOS					
DOMINION ENERGY TRANSMISSION, INC.	HG ENERGY II APPALACHIA, LLC	SECOND AMENDMENT TO MEMORANDUM OF FARMOUT AGREEMENT	723					499
DOMINION ENERGY TRANSMISSION, INC.	HG ENERGY II APPALACHIA, LLC	THIRD AMENDMENT TO MEMORANDUM OF FARMOUT AGREEMENT	734					558
DOMINION ENERGY TRANSMISSION, INC.	HG ENERGY II APPALACHIA, LLC	ASSIGNMENT (68%)	736					220
		20-0443-0017-0000 03-006B-0050-0000						ALVADORE HUGHES, WIDOWER; ALDA DAVIS, WIDOW; PAULINE H. COURTNEY AND VANCE COURTNEY, HER HUSBAND; ICIE L. LAW, WIDOW; PAUL HUGHES AND MARIE HUGHES, HIS WIFE; HENRETTA HUGHES, WIDOW; ALDA DAVIS, ATTORNEY IN FACET FOR LAWRESNCE A. HUGHES; AND LAWRENCE A. HUGHES AND GLENNA F. HUGHES, HIS WIFE
				HOPE NATURAL GAS COMPANY	CONSOLIDATED GAS SUPPLY CORPORATION	CONFIRMATORY DEED	LEWIS 294	89
				CONSOLIDATED GAS SUPPLY CORPORATION	CONSOLIDATED GAS TRANSMISSION CORPORATION	ASSIGNMENT	HARRISON 1136	250
				CONSOLIDATED GAS TRANSMISSION CORPORATION	CNG TRANSMISSION CORPORATION	MERGER/NAME CHANGE	LEWIS 425	127
							HARRISON 903	179
							LEWIS 796	247

RECEIVED
 May 27 2021
 Department of
 Environmental Protection
 or Oil and Gas

15	FK064263	03-006B-0021-0001 p/o 03-006B-0021-0002 p/o 03-006B-0021-0000 p/o 03-006B-0021-0003	Q100437000 FEEHGII0029 FEEHGII0032	CNG TRANSMISSION CORPORATION	DOMINION TRANSMISSION, INC.	MERGER/NAME CHANGE	58	362
				DOMINION TRANSMISSION, INC.	CNX GAS COMPANY LLC	MEMORANDUM OF FARMOUT AGREEMENT	HARRISON 1522	33
				CNX GAS COMPANY LLC	NOBLE ENERGY, INC.	LIMITED PARTIAL ASSIGNMENT (50%)	LEWIS 672	154
				DOMINION TRANSMISSION, INC.	CNX GAS COMPANY LLC AND NOBLE ENERGY	PARTIAL ASSIGNMENT (32%)	HARRISON 1543	1235
				CNX GAS COMPANY LLC	NOBLE ENERGY, INC.	ASSIGNMENT	LEWIS 684	57
				NOBLE ENERGY, INC.	HG ENERGY II APPALACHIA, LLC	ASSIGNMENT	1576	125
				DOMINION TRANSMISSION, INC.	DOMINION ENERGY TRANSMISSION, INC.	ASSIGNMENT	1584	942
						ASSIGNMENT	1600	660
						MERGER/NAME CHANGE	WVSOS	
						SECOND AMENDMENT TO MEMORANDUM OF FARMOUT AGREEMENT	HARRISON 1601	581
		HG ENERGY II APPALACHIA, LLC	LEWIS 723	499				
		DOMINION ENERGY TRANSMISSION, INC.	HARRISON 1621	962				
		HG ENERGY II APPALACHIA, LLC	LEWIS 734	558				
		DOMINION ENERGY TRANSMISSION, INC.	736	220				
12	FK064253	20-0443-0005-0000 20-0443-0006-0000 20-0443-0007-0000 20-0443-0008-0000 20-0443-0008-0001 20-0443-0018-0000 20-4403-0019-0000 20-0443-0020-0000 p/o 03-006B-0021-0002 p/o 03-006B-0021-0003	Q100298000	MARY POST DAVIS AND EVERETT W. DAVIS, HER HUSBAND; O. ROY TALLMAN AND MARY L. TALLMAN, HIS WIFE; A. D. TALLMAN AND NATALIE TALLMAN, HIS WIFE; PEARL ANDERSON AND R. E. ANDERSON, HER HUSBAND; H. B. TALLMAN AND SOPHIE L. TALLMAN, HIS WIFE; W.H. TALLMAN AND FLORENCE TALLMAN, HIS WIFE, EDNA WARDEN AND W. W. WARDER, HER HUSBAND; MARY TALLMAN, SINGLE; CLARA R. TALLMAN, WIDOW; C. D. PAUGH, WIDOWER; C. W. PAUGH AND SALLIE PAUGH, HIS; MARY ALMA ATKINSON, SEPARATEDFROM HER HUSBAND	HOPE NATURAL GAS COMPANY	NOT LESS THAN 1/8	LEWIS 220	325
							HARRISON 775	241
				HOPE NATURAL GAS COMPANY	CONSOLIDATED GAS SUPPLY CORPORATION	CONFIRMATORY DEED	LEWIS 294	89
				CONSOLIDATED GAS SUPPLY CORPORATION	CONSOLIDATED GAS TRANSMISSION CORPORATION	ASSIGNMENT	HARRISON 1136	250
				CONSOLIDATED GAS TRANSMISSION CORPORATION	CNG TRANSMISSION CORPORATION	MERGER/NAME CHANGE	LEWIS 425	127
				CNG TRANSMISSION CORPORATION	DOMINION TRANSMISSION, INC.	MERGER/NAME CHANGE	51	795
						MERGER/NAME CHANGE	58	362
				DOMINION TRANSMISSION, INC.	CNX GAS COMPANY LLC	MEMORANDUM OF FARMOUT AGREEMENT	HARRISON 1522	33
							LEWIS 672	154
							HARRISON 1543	1235
				CNX GAS COMPANY LLC	NOBLE ENERGY, INC.	LIMITED PARTIAL ASSIGNMENT (50%)	LEWIS 684	57
				DOMINION TRANSMISSION, INC.	CNX GAS COMPANY LLC AND NOBLE ENERGY	PARTIAL ASSIGNMENT (32%)	1576	125
				CNX GAS COMPANY LLC	NOBLE ENERGY, INC.	ASSIGNMENT	1584	942
				NOBLE ENERGY, INC.	HG ENERGY II APPALACHIA, LLC	ASSIGNMENT	1600	660
				DOMINION TRANSMISSION, INC.	DOMINION ENERGY TRANSMISSION, INC.	MERGER/NAME CHANGE	WVSOS	
						SECOND AMENDMENT TO MEMORANDUM OF FARMOUT AGREEMENT	HARRISON 1601	581
						HG ENERGY II APPALACHIA, LLC	LEWIS 723	499
						DOMINION ENERGY TRANSMISSION, INC.	HARRISON 1621	962
		HG ENERGY II APPALACHIA, LLC	LEWIS 734	558				
		DOMINION ENERGY TRANSMISSION, INC.	736	220				
35	FK061801	20-0443-0002-0000 20-0443-0002-0001 20-0443-0003-0000	Q101043000 FEEHGII0016	DAISY LYNCH, ET AL.	HOPE NATURAL GAS COMPANY	NOT LESS THAN 1/8	727	339
				HOPE NATURAL GAS COMPANY	CONSOLIDATED GAS SUPPLY CORPORATION	CONFIRMATORY DEED	903	179
				CONSOLIDATED GAS SUPPLY CORPORATION	CONSOLIDATED GAS TRANSMISSION CORPORATION	ASSIGNMENT	1136	250
				CONSOLIDATED GAS TRANSMISSION CORPORATION	CNG TRANSMISSION CORPORATION	MERGER/NAME CHANGE	WVSOS	
				CNG TRANSMISSION CORPORATION	DOMINION TRANSMISSION, INC.	MERGER/NAME CHANGE	WVSOS	
				DOMINION TRANSMISSION, INC.	CNX GAS COMPANY LLC	MEMORANDUM OF FARMOUT AGREEMENT	1522	33
						FIRST AMENDMENT TO MEMORANDUM OF FARMOUT AGREEMENT	1524	491
				DOMINION TRANSMISSION, INC.	CNX GAS COMPANY LLC	LIMITED PARTIAL ASSIGNMENT (50%)	1543	1235
				CNX GAS COMPANY LLC	NOBLE ENERGY, INC.	PARTIAL ASSIGNMENT (32%)	1576	125
				DOMINION TRANSMISSION, INC.	CNX GAS COMPANY LLC AND NOBLE ENERGY, INC.	ASSIGNMENT	1584	942
				CNX GAS COMPANY LLC	NOBLE ENERGY, INC.	ASSIGNMENT	1600	660
				NOBLE ENERGY, INC.	HG ENERGY II APPALACHIA, LLC	ASSIGNMENT	WVSOS	
				DOMINON TRANSMISSION, INC.	DOMINION ENERGY TRANSMISSION, INC.	MERGER/NAME CHANGE	WVSOS	
						SECOND AMENDMENT TO MEMORANDUM OF FARMOUT AGREEMENT	1601	581
		HG ENERGY II APPALACHIA, LLC						
		DOMINION TRANSMISSION, INC.						
		HG ENERGY II APPALACHIA, LLC	1621	1295				
		DOMINION ENERGY TRANSMISSION, INC.						

MAY 27 2021
 RECEIVED
 Office of Oil and Gas
 Environmental Protection
 WV Department of

33	FK052872	20-0443-0001-0000	Q100474000 FEEHGII0016	DOMINION ENERGY TRANSMISSION, INC.	HG ENERGY II APPALACHIA, LLC	ASSIGNMENT (68%)	1637	1081	
				J. M. BEEGHLEY, ET UX	SOUTH PENN OIL COMPANY	NOT LESS THAN 1/8	113	419	
				SOUTH PENN OIL COMPANY	HOPE NATURAL GAS COMPANY	ASSIGNMENT	240	210	
				HOPE NATURAL GAS COMPANY	RESERVE GAS COMPANY	ASSIGNMENT	221	210	
				RESERVE GAS COMPANY	HOPE NATURAL GAS COMPANY	CONFIRMATORY DEED	508	573	
				HOPE NATURAL GAS COMPANY	CONSOLIDATED GAS SUPPLY CORPORATION	CONFIRMATORY DEED	903	179	
				CONSOLIDATED GAS SUPPLY CORPORATION	CONSOLIDATED GAS TRANSMISSION CORPORATION	ASSIGNMENT	1136	250	
				CONSOLIDATED GAS TRANSMISSION CORPORATION	CNG TRANSMISSION CORPORATION	MERGER/NAME CHANGE	WVSOS		
				CNG TRANSMISSION CORPORATION	DOMINION TRANSMISSION, INC.	MERGER/NAME CHANGE	WVSOS		
				DOMINION TRANSMISSION, INC.	CNX GAS COMPANY LLC	MEMORANDUM OF FARMOUT AGREEMENT	1522	33	
						FIRST AMENDMENT TO MEMORANDUM OF FARMOUT AGREEMENT	1524	491	
				DOMINION TRANSMISSION, INC.	CNX GAS COMPANY LLC	NOBLE ENERGY, INC.	LIMITED PARTIAL ASSIGNMENT (50%)	1543	1235
				CNX GAS COMPANY LLC	CNX GAS COMPANY LLC	NOBLE ENERGY, INC.	ASSIGNMENT	1584	942
				NOBLE ENERGY, INC.	HOPE NATURAL GAS COMPANY	ASSIGNMENT	1600	660	
				DOMINION TRANSMISSION, INC.	DOMINION ENERGY TRANSMISSION, INC.	MERGER/NAME CHANGE	WVSOS		
				DOMINION TRANSMISSION, INC.	CNX GAS COMPANY LLC AND NOBLE ENERGY, INC.	PARTIAL ASSIGNMENT (32%)	1576	125	
						SECOND AMENDMENT TO MEMORANDUM OF FARMOUT AGREEMENT	1601	581	
						THIRD AMENDMENT TO MEMORANDUM OF FARMOUT AGREEMENT	1621	1295	
						ASSIGNMENT (68%)	736	220	
				32	FK066167	p/o 20-0422-0037-0000 p/o 20-0422-0038-0001	Q100992000	W. H. COFFINDAFFER AND MAXIE COFFINDAFFER, HIS WIFE; THE UNION NATIONAL BANK OF CLARKSBURG, GAURDIAN OF ROBERT L. COFFINDAFFER; THE UNION NATIONAL BANK OF CLARKSBURG TRUSTEE FOR CLYDE C. COFFINDAFFER U/W OF ABRAM B, COFFINDAFFER; R. S. COFFINDAFFER AND BEULAH B. COFFINDAFFER, HIS WIFE; ELVA CURREY AND H. T. CURREY, HER HUSBAND; BERTHA COFFINDAFFER, WIDOW; TAYLOR COFFINDAFFER AND VIGINIA COFFINDAFFER, HIS WIFE; MARY LEE GIBSON AND CRAMER W. GIBSON, HER HUSBAND; TILLMAN F. WILLIAMS AND LUETTA WILLIAMS, HIS WIFE; C. Z. COFFINDAFFER AND PAULINE L. COFFINDAFFER, HIS WIFE; ALBERTA WILLIAMS, SINGLE; JAMES L. RODGERS AND MARY L. RODGERS, HIS WIFE; JAMES R. RODGERS AND BETTYE MAE RODGERS, HIS WIFE; E. E. COFFINDAFFER AND LAURA R. COFFINDAFFER, HIS WIFE	HOPE NATURAL GAS COMPANY
HOPE NATURAL GAS COMPANY	CONSOLIDATED GAS SUPPLY CORPORATION	CONFIRMATORY DEED	903					179	
CONSOLIDATED GAS SUPPLY CORPORATION	CONSOLIDATED GAS TRANSMISSION CORPORATION	ASSIGNMENT	1136					250	
CONSOLIDATED GAS TRANSMISSION CORPORATION	CNG TRANSMISSION CORPORATION	MERGER/NAME CHANGE	51					795	
CNG TRANSMISSION CORPORATION	DOMINION TRANSMISSION, INC.	MERGER/NAME CHANGE	58					362	
DOMINION TRANSMISSION, INC.	CNX GAS COMPANY LLC	MEMORANDUM OF FARMOUT AGREEMENT	1522					33	
CNX GAS COMPANY LLC	NOBLE ENERGY, INC.	LIMITED PARTIAL ASSIGNMENT (50%)	1543					1235	
DOMINION TRANSMISSION, INC.	CNX GAS COMPANY LLC AND NOBLE ENERGY, INC.	PARTIAL ASSIGNMENT (32%)	1576					125	
CNX GAS COMPANY LLC	NOBLE ENERGY, INC.	ASSIGNMENT	1584					942	
NOBLE ENERGY, INC.	HG ENERGY II APPALACHIA, LLC	ASSIGNMENT	1600					660	
NOBLE ENERGY, INC.	HG ENERGY II APPALACHIA, LLC	ASSIGNMENT	1600					692	
DOMINION TRANSMISSION, INC.	DOMINION ENERGY TRANSMISSION, INC.	MERGER/NAME CHANGE	WVSOS						
DOMINION ENERGY TRANSMISSION, INC.	HG ENERGY II APPALACHIA, LLC	SECOND AMENDMENT TO MEMORANDUM OF FARMOUT AGREEMENT	1601					581	
DOMINION ENERGY TRANSMISSION, INC.	HG ENERGY II APPALACHIA, LLC	THIRD AMENDMENT TO MEMORANDUM OF FARMOUT AGREEMENT	1621					1295	
DOMINION ENERGY TRANSMISSION, INC.	HG ENERGY II APPALACHIA, LLC	ASSIGNMENT (68%)	736					220	
39		20-0422-0020-0000 20-0422-0020-0001 20-0422-0035-0000	FEEHGII0072	ROBERT MAX MCDONALD, AS TRUSTEE OF THE MCDONALD TRUST DATED JULY 30, 1996	HG ENERGY II APPALACHIA, LLC	MINERAL DEED	1629	831	
				LOXIE V. MCCLUNG AND WILBERT D. MCCLUNG, HER HUSBAND; ELMA F. MCCLUNG AND JUNIOR MCCLUNG, HER HUSBAND	WEST VIRGINIA ENERGIES	NOT LESS THAN 1/8	1143	638	
				GASTON OLDAKER AND ONIA OLDAKER, HIS WIFE	WEST VIRGINIA ENERGIES	NOT LESS THAN 1/8	1143	641	
				WEST VIRGINIA ENERGIES, INC.	STONEWALL GAS COMPANY	ASSIGNMENT	1153	716	

RECEIVED
 MAY 27 2021
 Office of Oil and Gas
 WV Department of Environmental Protection

40		20-0422-0036-0000	Q101870000	STONEWALL GAS COMPANY	DOMINION APPALACHIAN DEVELOPMENT PROPERTIES, INC	MERGER/NAME CHANGE	59	1086
		20-0423-0012-0000		DOMINION APPALACHIAN DEVELOPMENT PROPERTIES, INC	CNX GAS COMPANY LLC	AFFIDAVIT - MERGER/NAME CHANGE	1472	294
60	N/A	20-0422-0021-0000	TBD	CNX GAS COMPANY LLC	NOBLE ENERGY, INC.	ASSIGNMENT (50%)	1584	13
				CNX GAS COMPANY LLC	NOBLE ENERGY, INC.	ASSIGNMENT	1584	942
				NOBLE ENERGY, INC.	HG ENERGY II APPALACHIA, LLC	ASSIGNMENT	1600	650
				NOBLE ENERGY, INC.	HG ENERGY II APPALACHIA, LLC	ASSIGNMENT	1600	692
				Agnes J. Coffindaffer	HG ENERGY II APPALACHIA, LLC	NOT LESS THAN 1/8	1706	1226
				Connie C. Ferrell	HG ENERGY II APPALACHIA, LLC	NOT LESS THAN 1/8	1706	1232
				Wade H. Coffindaffer III	HG ENERGY II APPALACHIA, LLC	NOT LESS THAN 1/8	1705	1105
				Debra C. Oyler AKA Debra Kay Stansbury	HG ENERGY II APPALACHIA, LLC	NOT LESS THAN 1/8	1710	317
				Charles Russell Jackson	HG ENERGY II APPALACHIA, LLC	NOT LESS THAN 1/8		
				Sidney Boggess Jackson	HG ENERGY II APPALACHIA, LLC	NOT LESS THAN 1/8	1705	1082
				Trustees of the Carney B. Jackson Revocable Trust	HG ENERGY II APPALACHIA, LLC	NOT LESS THAN 1/8	1705	1066
				Terry Bostardi	HG ENERGY II APPALACHIA, LLC	NOT LESS THAN 1/8	1708	690
				Frank Bostardi, Jr.	HG ENERGY II APPALACHIA, LLC	NOT LESS THAN 1/8	1710	882
				William J. Sheldon	HG ENERGY II APPALACHIA, LLC	NOT LESS THAN 1/8	1707	30
				Trustees of the Jackson Lodge No. 35 A. F. & A. M. Cemetery	HG ENERGY II APPALACHIA, LLC	NOT LESS THAN 1/8	1705	1086
				Shelly Legaspi	HG ENERGY II APPALACHIA, LLC	NOT LESS THAN 1/8	1708	688
				Barbara Ann Dawson	HG ENERGY II APPALACHIA, LLC	NOT LESS THAN 1/8	1706	1224
				Tillman Lee Williams (Life Estate)	HG ENERGY II APPALACHIA, LLC	NOT LESS THAN 1/8	1707	426
				Aneta Marie Davis aka Anita Maire Davis (Remainder)	HG ENERGY II APPALACHIA, LLC	NOT LESS THAN 1/8	1707	422
				Rita Jane Davis (Remainder)	HG ENERGY II APPALACHIA, LLC	NOT LESS THAN 1/8	1710	892
				Aneta Marie Davis aka Anita Maire Davis (Life Estate)	HG ENERGY II APPALACHIA, LLC	NOT LESS THAN 1/8	1707	422
				Beth Ann Thompson (Remainder)	HG ENERGY II APPALACHIA, LLC	NOT LESS THAN 1/8	1710	305
				Rita Jane Davis (Life Estate)	HG ENERGY II APPALACHIA, LLC	NOT LESS THAN 1/8	1710	888
				Russell L. Currey c/o Renee Jones	HG ENERGY II APPALACHIA, LLC	NOT LESS THAN 1/8	1705	1103
				Susan J. Smith	HG ENERGY II APPALACHIA, LLC	NOT LESS THAN 1/8	1705	1080
				Ralph LaGatta (Life Estate)	HG ENERGY II APPALACHIA, LLC	NOT LESS THAN 1/8	1705	1098
				Carmela Weber (Remainder)	HG ENERGY II APPALACHIA, LLC	NOT LESS THAN 1/8	1705	1098
				Michael LaGatta (Remainder)	HG ENERGY II APPALACHIA, LLC	NOT LESS THAN 1/8	1705	1098
				The Francis J. LaGatta Revocable Trust (Remainder)	HG ENERGY II APPALACHIA, LLC	NOT LESS THAN 1/8	1705	1098
				Breana Lewis	HG ENERGY II APPALACHIA, LLC	NOT LESS THAN 1/8	1707	901
				Jane Ann Barton	HG ENERGY II APPALACHIA, LLC	NOT LESS THAN 1/8	1705	1205
				Jackie Lyn Gear	HG ENERGY II APPALACHIA, LLC	NOT LESS THAN 1/8	1706	1230
					HG ENERGY II APPALACHIA, LLC	MINERAL DEED	1705	1203
					HG ENERGY II APPALACHIA, LLC	MINERAL DEED	1705	1078
					HG ENERGY II APPALACHIA, LLC	MINERAL DEED	1711	60
					HG ENERGY II APPALACHIA, LLC	MINERAL DEED	1705	1084
				Richard Thomas Ford, II	HG ENERGY II APPALACHIA, LLC	NOT LESS THAN 1/8	1706	1234
				Diana Jean Smith Rahm	HG ENERGY II APPALACHIA, LLC	NOT LESS THAN 1/8	1705	1068
				Stephen Sanger	HG ENERGY II APPALACHIA, LLC	NOT LESS THAN 1/8	1708	712
				Timothy Sanger	HG ENERGY II APPALACHIA, LLC	NOT LESS THAN 1/8	1708	615
James R. Smith	HG ENERGY II APPALACHIA, LLC	NOT LESS THAN 1/8	1707	414				
Stephen Shaheen	HG ENERGY II APPALACHIA, LLC	NOT LESS THAN 1/8	1705	1101				

RECEIVED
 Office of Oil and Gas
 MAY 27 2021
 WV Department of
 Environmental Protection



HG Energy, LLC
5260 Dupont Road
Parkersburg, WV 26101
(304) 420-1100 - Office
(304) 863-3172 - Fax

4704105711

May 13, 2021

WV DEP
Division of Oil & Gas
Attn: Kelly Kees
601 57th Street
Charleston, West Virginia 25304

RECEIVED
Office of Oil and Gas
MAY 27 2021
WV Department of
Environmental Protection

RE: Flesher 1212 N-2H Request for Permit Revision – (47-041-05711)
Freemans Creek District, Lewis County, West Virginia
Request for Modification Due to Acquiring Additional Leases

Dear Ms. Kees -

Per our discussions, enclosed are revised forms (survey plat, mylar, WW-6B, casing schematic, and WW6A-1) for the requested 1212 N-2H well work permit revision. Also included is a check to cover the cost of requesting a modification for an existing permit. We ask the permit be modified to reflect additional leases acquired to length the lateral.

Please let me know if you have any questions or require additional information. I can be reached at (304) 420-1119 or dwhite@hgenergyllc.com.

Very truly yours,

Diane White

Diane C. White

Enclosures

cc: Sam Ward – DEP State Inspector

06/11/2021