



west virginia department of environmental protection

Office of Oil and Gas
601 57th Street, S.E.
Charleston, WV 25304
(304) 926-0450
fax: (304) 926-0452

Harold D. Ward, Cabinet Secretary
www.dep.wv.gov

Monday, January 25, 2021
PERMIT MODIFICATION APPROVAL
Horizontal 6A / New Drill

HG ENERGY II APPALACHIA, LLC
5260 DUPONT ROAD

PARKERSBURG, WV 26101

Re: Permit Modification Approval for MCDONALD 1211 N-5H
47-041-05701-00-00

Extend Lateral Length

HG ENERGY II APPALACHIA, LLC

The Office of Oil and Gas has reviewed the attached permit modification for the above referenced permit. The attached modification has been approved and well work may begin. Please be reminded that the oil and gas inspector is to be notified twenty-four (24) hours before permitted well work is commenced.

If there are any questions, please feel free to contact me at (304) 926- 0450.

A blue ink signature of James A. Martin.

James A. Martin
Chief

Operator's Well Number: MCDONALD 1211 N-5H
Farm Name: HG ENERGY II APPALACHIA, LLC
U.S. WELL NUMBER: 47-041-05701-00-00
Horizontal 6A New Drill
Date Modification Issued: 1/25/2021

Promoting a healthy environment.

WW-6B
(04/15)

API NO. 47- _____ - _____
OPERATOR WELL NO. McDonald 1211 N-5H
Well Pad Name: McDonald 1211

STATE OF WEST VIRGINIA
DEPARTMENT OF ENVIRONMENTAL PROTECTION, OFFICE OF OIL AND GAS
WELL WORK PERMIT APPLICATION

1) Well Operator: HG Energy II Appalachia, L.P. 494519932 Lewis Freeman West Milford 7.5'
Operator ID County District Quadrangle

2) Operator's Well Number: McDonald 1211 N-5H Well Pad Name: McDonald 1211

3) Farm Name/Surface Owner: McDonald Public Road Access: SR 19

4) Elevation, current ground: 1280' Elevation, proposed post-construction: 1264.5'

5) Well Type (a) Gas Oil _____ Underground Storage _____
Other _____
(b) If Gas Shallow Deep _____
Horizontal

6) Existing Pad: Yes or No No

7) Proposed Target Formation(s), Depth(s), Anticipated Thickness and Expected Pressure(s):
Marcellus at 6753'/6835' and 82' in thickness. Anticipated pressure at 4314#.

8) Proposed Total Vertical Depth: 6800'

9) Formation at Total Vertical Depth: Marcellus

10) Proposed Total Measured Depth: 26,490'

11) Proposed Horizontal Leg Length: 19,146'

12) Approximate Fresh Water Strata Depths: 34', 107', 205', 229', 249'

13) Method to Determine Fresh Water Depths: Nearest offset well data, (47-041-5128, 3938, 4929)

14) Approximate Saltwater Depths: 1299', 1675'

15) Approximate Coal Seam Depths: 810' to 815', (Surface casing being extended to cover additional seams of coal in the DTI Storage Field)

16) Approximate Depth to Possible Void (coal mine, karst, other): None

17) Does Proposed well location contain coal seams directly overlying or adjacent to an active mine? Yes _____ No

(a) If Yes, provide Mine Info: Name: _____
Depth: _____
Seam: _____
Owner: _____

RECEIVED
Office of Oil and Gas

DEC 16 2020

WV Department of
Environmental Protection

Bary Stiles
12-10-20

4704105701

WW-6B
(04/15)

API NO. 47- _____
OPERATOR WELL NO. McDonald 1211 N-5H
Well Pad Name: McDonald 1211

18)

CASING AND TUBING PROGRAM

| TYPE | Size (in) | New or Used | Grade | Weight per ft. (lb/ft) | FOOTAGE: For Drilling (ft) | INTERVALS: Left in Well (ft) | CEMENT: Fill-up (Cu. Ft.)/CTS |
|------------------|-----------|-------------|----------|------------------------|----------------------------|------------------------------|-------------------------------|
| Conductor | 30" | New | LS | 157.5 | 120' | 120' | Drilled In |
| Fresh Water/Coal | 20" | NEW | J-55 | 94 | 1000' | 1000' | CTS |
| Intermediate 1 | 13 3/8" | NEW | J-55 BTC | 68 | 2040' | 2040' | CTS |
| Intermediate 2 | 9 5/8" | NEW | J-55 BTC | 40 | 2750' | 2750' | CTS |
| Production | 5 1/2" | NEW | P-110 HP | 23 | 26490' | 26490' | CTS |
| Tubing | | | | | | | |
| Liners | | | | | | | |

| TYPE | Size (in) | Wellbore Diameter (in) | Wall Thickness (in) | Burst Pressure (psi) | Anticipated Max. Internal Pressure (psi) | Cement Type | Cement Yield (cu. ft./k) |
|------------------|-----------|------------------------|---------------------|----------------------|--|-----------------|---|
| Conductor | 30" | 30" | .500 | | | | Drilled In |
| Fresh Water/Coal | 20" | 26" | .438 | 2110 | 1200 | Type 1, Class A | 40 % excess yield = 1.20, CTS |
| Intermediate 1 | 13 3/8" | 17 1/2" | .480 | 3450 | | Type 1/Class A | Lead 40% excess, Tail 0% excess |
| Intermediate 2 | 9 5/8" | 12 1/4" | .395 | 3950 | | Type 1/Class A | Lead 40% excess, Tail 0% Excess + |
| Production | 5 1/2" | 8 1/2" | .415 | 16240 | 12000 | Type 1/Class A | 20% excess yield = 1.19, tail yield 1.24 + |
| Tubing | | | | | | | |
| Liners | | | | | | | |

PACKERS

| | | | | |
|-------------|--|--|--|--|
| Kind: | | | | |
| Sizes: | | | | |
| Depths Set: | | | | |

RECEIVED
Office of Oil and Gas

DEC 16 2020

WV Department of
Environmental Protection

Barry Stille
12-10-20

WW-6B
(10/14)

API NO. 47- _____ - _____
OPERATOR WELL NO. McDonald 1211 N-5H
Well Pad Name: McDonald 1211

19) Describe proposed well work, including the drilling and plugging back of any pilot hole:

Drill the vertical depth to the Marcellus at an estimated total vertical depth of approximately 6800 feet. Drill horizontal leg to estimated 19,146' lateral length, 26,490' TMD. Hydraulically fracture stimulate and be capable of producing from the Marcellus Formation. Should we encounter an unanticipated void in the coal, we will install a minimum of 20' of casing below the void but not more than 100' below the void, set a basket and grout to surface. We plan to run an ACP above the Gantz/Dominion Storage interval to aid in sealing off and isolating the storage interval.

20) Describe fracturing/stimulating methods in detail, including anticipated max pressure and max rate:

The stimulation will be completed with multiple stages divided over the lateral length of the well. Stage spacing is dependent upon engineering design. Slickwater fracturing technique will be utilized on each stage using sand, water, and chemicals. See attached list. Maximum pressure not to exceed 12,500 psi.

21) Total Area to be disturbed, including roads, stockpile area, pits, etc., (acres): 22.75 acres

22) Area to be disturbed for well pad only, less access road (acres): 7.31 acres

23) Describe centralizer placement for each casing string:

No centralizers will be used with conductor casing.
Freshwater/Coal - centralized every 3 joints to surface.
Intermediate 1 - Bow Spring on every joint, will also be running ACP for isolating storage zone
Intermediate 2 - Bow Spring on first 2 joints then every third joint to 100' from surface.
Production - Run 1 spiral centralizer every 5 joints from the top of the curve to surface. Run 1 spiral centralizer every 3 joints from the 1st 5.5' long joint to the top of the curve.

24) Describe all cement additives associated with each cement type:

Conductor - N/A, Casing to be drilled in w/ Dual Rotary Rig.
Fresh Water/Coal - 15.6 ppg PNE-1 + 3% bwoc CaCl₂, 40% Excess Yield = 1.20, CTS
Intermediate 1 - Lead: 15.4 ppg PNE-1 + 2.5% bwoc CaCl₂, 40% Excess, Tail: 15.9 ppg PNE-1 + 2.5% bwoc CaCl₂ zero% Excess, CTS
Intermediate 2 - Lead: 15.4 ppg PNE-1 + 2.5% bwoc CaCl₂, 40% Excess, Tail: 15.9 ppg PNE-1 + 2.5% bwoc CaCl₂ zero% Excess, CTS
Production - Lead: 14.5 ppg POZ/PNE-1 + 0.3% bwoc R3 + 1% bwoc EC1 + 0.75 gal/sk FP13L + 0.3% bwoc MPA170, Tail: 14.8 ppg PNE-1 + 0.35% bwoc R3 + 0.75 gal/sk FP13L + 50% bwoc ASCA1 + 0.5% bwoc MPA170 20% Excess, Lead Yield=1.19, Tail Yield=1.94, CTS

25) Proposed borehole conditioning procedures:

Conductor - Ensure the hole is clean at TD.
Fresh Water/Coal - Once casing is at setting depth, circulate a minimum of one hole volume with Fresh Water prior to pumping cement.
Intermediate 1 - Once casing is at setting depth, Circulate and condition at TD. Circulate a minimum of one hole volume prior to pumping cement.
Intermediate 2 - Once casing is at setting depth, Circulate and condition mud at TD. Circulate a minimum of one hole volume prior to pumping cement.
Production - Once on bottom/TD with casing, circulate at max allowable pump rate for at least 2x bottoms up, or until returns and pump pressures indicate the hole is clean. Circulate a minimum of one hole volume prior to pumping cement.

RECEIVED
Office of Oil and Gas

DEC 16 2020

WV Department of
Environmental Protection

*Note: Attach additional sheets as needed.



4704105701

1211 N-5H
Marcellus Shale Horizontal
Lewis County, WV

| Ground Elevation | | | 1211 N-5H SHL | | | | | 14211837.96N 1789516.42E | | |
|------------------------|---------------|--|-------------------------|----------------------|-------------|------------------------|---|---|---|---|
| Azm | | | 1211 N-5H LP | | | | | 14212802.35N 1790237.59E | | |
| WELLBORE DIAGRAM | | | 1211 N-5H BHL | | | | | 14230956.42N 1784205.98E | | |
| HOLE | CASING | GEOLOGY | TOP | BASE | MUD | CEMENT | CENTRALIZERS | CONDITIONING | COMMENTS | |
| | 30" | 30" 157.5# LS | Conductor | 0 | 120 | AIR | N/A, Casing to be drilled in w/ Dual Rotary Rig | N/A | Ensure the hole is clean at TD. | Conductor casing = 0.5" wall thickness |
| | 28" | 20" 94# J-55 | Fresh Water | 0 | 205 | AIR | 15.6 ppg PNE-1 + 3% bwoc CaCl 40% Excess Yield=1.20 / CTS | Centralized every 3 joints to surface | Once casing is at setting depth, circulate a minimum of one hole volume with Fresh Water prior to pumping cement. | Surface casing = 0.438" wall thickness Burst=2110 psi |
| | | | Kittanning Coal | 919 | 924 | | | | | |
| | | | Fresh Water Protection | 0 | 1000 | | | | | |
| | 17.5" | 13-3/8" 68# J-55 BTC | Big Lime | 1480 | 1545 | AIR / KCL Salt Polymer | Lead: 15.4 ppg PNE-1 + 2.5% bwoc CaCl 40% Excess / Tail: 15.9 ppg PNE-1 + 2.5% bwoc CaCl zero% Excess. CTS | Bow Spring on every joint <i>*will also be running ACP for isolating storage zone*</i> | Once casing is at setting depth, Circulate and condition at TD. Circulate a minimum of one hole volume prior to pumping cement. | Intermediate casing = 0.480" wall thickness Burst=3450 psi |
| | | | Injun / Gantz (Storage) | 1545 / 1830 | 1650 / 1890 | | | | | |
| | | | Intermediate 1 | 0 | 2040 | | | | | |
| | 12.25" | 9-5/8" 40# J-55 BTC | Fifty / Thirty Foot | 1940 / 2037 | 1965 / 2060 | AIR / KCL Salt Polymer | Lead: 15.4 ppg PNE-1 + 2.5% bwoc CaCl 40% Excess / Tail: 15.9 ppg PNE-1 + 2.5% bwoc CaCl zero% Excess. CTS | Bow Spring on first 2 joints then every third joint to 100' form surface | Once casing is at setting depth, Circulate and condition mud at TD. Circulate a minimum of one hole volume prior to pumping cement. | Intermediate casing = 0.395" wall thickness Burst=3950 psi |
| | | | Gordon Stray / Gordon | 2060 / 2130 | 2130 / 2220 | | | | | |
| | | | 5th Sand | 2320 | 2360 | | | | | |
| | | | Bayard Sand | 2405 | 2420 | | | | | |
| | 8.5" Vertical | 5-1/2" 23# P-110 HP CDC HTQ RECEIVED Office of Oil and Gas DEC 16 2020 WV Department of Environmental Protection | Speechley | 3025 | 3041 | AIR / 9.0ppg SOBM | Lead: 14.5 ppg POZ:PNE-1 + 0.3% bwoc R3 + 1% bwoc EC1 + 0.75 gal/sk FP13L + 0.3% bwoc MPA170 Tail: 14.8 ppg PNE-1 + 0.35% bwoc R3 + 0.75 gal/sk FP13L + 50% bwoc ASCA1 + 0.5% bwoc MPA170 20% Excess Lead Yield=1.19 Tail Yield=1.94 CTS | Run 1 spiral centralizer every 5 joints from the top of the curve to surface. | Once on bottom/TD with casing, circulate at max allowable pump rate for at least 2x bottoms up, or until returns and pump pressures indicate the hole is clean. Circulate a minimum of one hole volume prior to pumping cement. | Production casing = 0.415" wall thickness Burst=16240 psi Note: Actual centralizer schedules may be changed due to hole conditions |
| | | | Balltown | 3250 | 3290 | | | | | |
| | | | Benson | 4340 | 4350 | | | | | |
| | 8.5" Lateral | | Rhinestreet | 6107 | 6377 | 11.5ppg-12.5ppg SOBM | | | | |
| Cashaqua | | | 6377 | 6477 | | | | | | |
| Middlesex | | | 6477 | 6509 | | | | | | |
| West River | | | 6509 | 6580 | | | | | | |
| Burkett | | | 6580 | 6590 | | | | | | |
| Tully Limestone | | | 6590 | 6698 | | | | | | |
| Hamilton | | | 6698 | 6753 | | | | | | |
| Marcellus | | | 6753 | 6835 | | | | | | |
| TMD / TVD (Production) | 26490 | | 6800 | | | | | | | |
| Onondaga | 6835 | | | 11.5ppg-12.5ppg SOBM | | | | | | |

LP @ 6800' TVD / 7344' MD

8.5" Hole - Cemented Long String
5-1/2" 23# P-110 HP CDC HTQ

+/-19146' ft Lateral

TD @ +/-6800' TVD
+/-26490' MD

X=centralizers



RECEIVED
 Office of Oil and Gas
 DEC 16 2020
 WV Department of
 Environmental Protection

1211 N-5H
Marcellus Shale Horizontal
Lewis County, WV

1211 N-5H SHL

14211837.96N 1789516.42E

Ground Elevation

1265.5'

1211 N-5H LP

14212802.35N 1790237.59E

Azm

340.538 / 344.203°

1211 N-5H BHL

14230956.42N 1784205.98E

| WELLBORE DIAGRAM | HOLE | CASING | GEOLOGY | TOP | BASE | MUD | CEMENT | CENTRALIZERS | CONDITIONING | COMMENTS |
|------------------|------------------------|-----------------------------|-------------------------|-----------------------|-----------------------|------------------------|---|---|---|--|
| | 30" | 30" 157.5# LS | Conductor | 0 | 120 | AIR | N/A, Casing to be drilled in w/ Dual Rotary Rig | N/A | Ensure the hole is clean at TD. | Conductor casing = 0.5" wall thickness |
| | 26" | 20" 94# J-55 | Fresh Water | 0 | 205 | AIR | 15.6 ppg PNE-1 + 3% bwoc CaCl 40% Excess / Tail: 15.9 ppg PNE-1 + 2.5% bwoc CaCl Yield=1.20 / CTS | Centralized every 3 joints to surface | Once casing is at setting depth, circulate a minimum of one hole volume with Fresh Water prior to pumping cement. | Surface casing = 0.438" wall thickness Burst=2110 psi |
| | | | Kittanning Coal | 919 | 924 | | | | | |
| | | | Fresh Water Protection | 0 | 1000 | | | | | |
| | 17.5" | 13-3/8" 68# J-55 BTC | Big Lime | 1480 | 1545 | AIR / KCL Salt Polymer | Lead: 15.4 ppg PNE-1 + 2.5% bwoc CaCl 40% Excess / Tail: 15.9 ppg PNE-1 + 2.5% bwoc CaCl zero% Excess. CTS | Bow Spring on every joint <i>"will also be running ACP for isolating storage zone"</i> | Once casing is at setting depth, Circulate and condition at TD. Circulate a minimum of one hole volume prior to pumping cement. | Intermediate casing = 0.480" wall thickness Burst=3450 psi |
| | | | Injun / Gantz (Storage) | 1545 / 1830 | 1650 / 1890 | | | | | |
| | | | Intermediate 1 | 0 | 2040 | | | | | |
| | | | Fifty / Thirty Foot | 1940 / 2037 | 1965 / 2060 | | | | | |
| | 12.25" | 9-5/8" 40# J-55 BTC | Gordon Stray / Gordon | 2060 / 2130 | 2130 / 2220 | AIR / KCL Salt Polymer | Lead: 15.4 ppg PNE-1 + 2.5% bwoc CaCl 40% Excess / Tail: 15.9 ppg PNE-1 + 2.5% bwoc CaCl zero% Excess. CTS | Bow Spring on first 2 joints then every third joint to 100' form surface | Once casing is at setting depth, Circulate and condition mud at TD. Circulate a minimum of one hole volume prior to pumping cement. | Intermediate casing = 0.395" wall thickness Burst=3950 psi |
| | | | 5th Sand | 2320 | 2360 | | | | | |
| | | | Bayard Sand | 2405 | 2420 | | | | | |
| | | | Intermediate 2 | 0 | 2750 | | | | | |
| | 8.5" Vertical | 5-1/2" 23# P-110 HP CDC HTQ | Speechley | 3025 | 3041 | AIR / 9.0ppg SOBMs | Lead: 14.5 ppg POZ:PNE-1 + 0.3% bwoc R3 + 1% bwoc EC1 + 0.75 gal/sk FP13L + 0.3% bwoc MPA170 Tail: 14.8 ppg PNE-1 + 0.35% bwoc R3 + 0.75 gal/sk FP13L + 50% bwoc ASCA1 + 0.5% bwoc MPA170 20% Excess Lead Yield=1.19 Tail Yield=1.94 CTS | Run 1 spiral centralizer every 5 joints from the top of the curve to surface. | Once on bottom/TD with casing, circulate at max allowable pump rate for at least 2x bottoms up, or until returns and pump pressures indicate the hole is clean. Circulate a minimum of one hole volume prior to pumping cement. | Production casing = 0.415" wall thickness Burst=16240 psi Note: Actual centralizer schedules may be changed due to hole conditions |
| | | | Balltown | 3250 | 3290 | | | | | |
| | | | Benson | 4340 | 4350 | | | | | |
| 8.5" Curve | Rhinestreet | | 6107 | 6377 | 11.5ppg-12.5ppg SOBMs | | | | | |
| | Cashaqua | | 6377 | 6477 | | | | | | |
| | Middlesex | | 6477 | 6509 | | | | | | |
| | West River | | 6509 | 6580 | | | | | | |
| | Burkett | | 6580 | 6590 | | | | | | |
| | Tully Limestone | | 6590 | 6698 | | | | | | |
| | Hamilton | | 6698 | 6753 | | | | | | |
| | Marcellus | | 6753 | 6835 | | | | | | |
| | TMD / TVD (Production) | | 26490 | 6800 | | | | | | |
| Onondaga | 6835 | | | | | | | | | |
| 8.5" Lateral | | | | 11.5ppg-12.5ppg SOBMs | | | | | | |

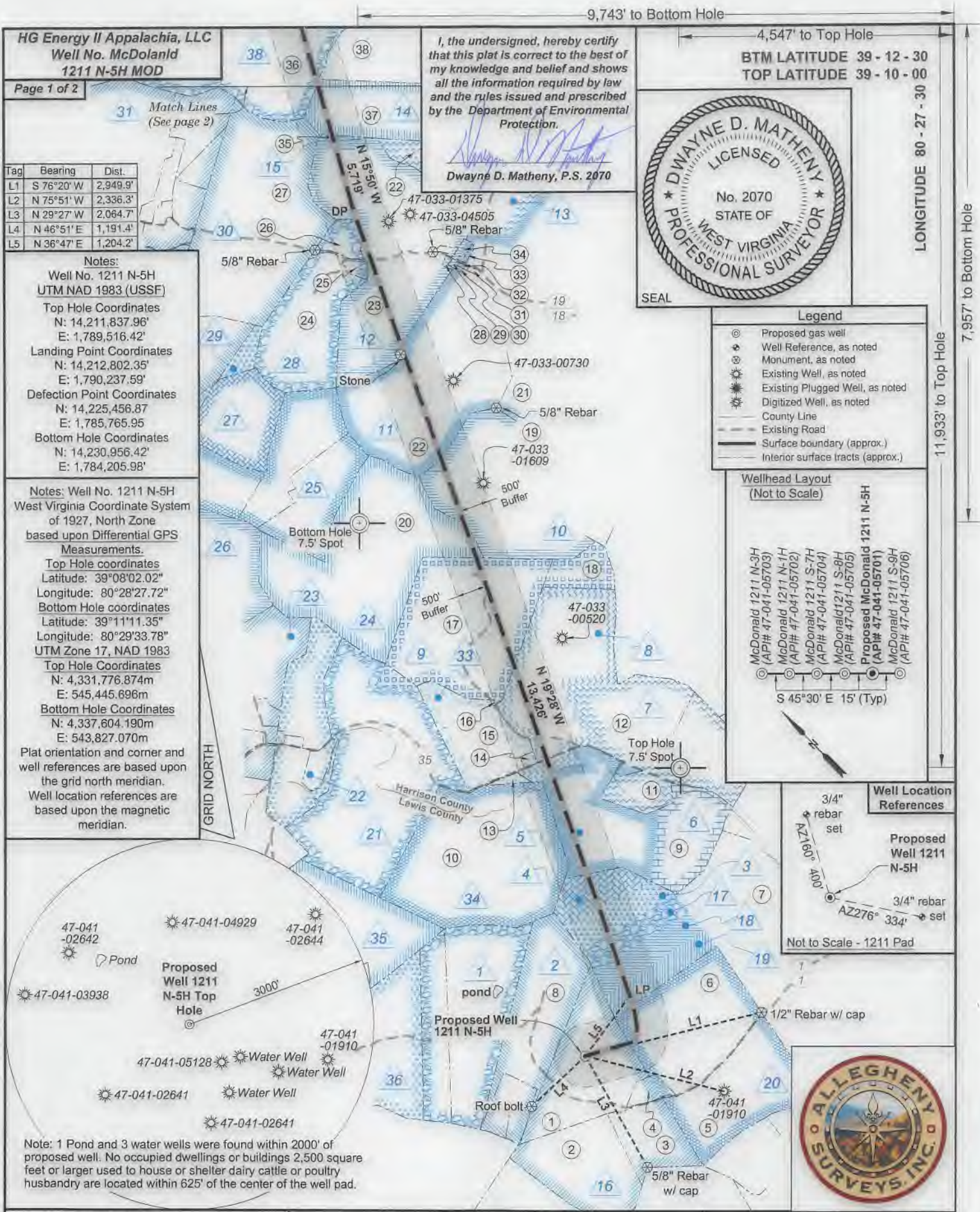
LP @ 6800' TVD / 7344' MD

8.5" Hole - Cemented Long String
5-1/2" 23# P-110 HP CDC HTQ

+/-19146' Lateral

TD @ +/-6800' TVD
+/-26490' MD

X=centralizers



HG Energy II Appalachia, LLC
Well No. McDoland
1211 N-5H MOD

Page 1 of 2

I, the undersigned, hereby certify that this plat is correct to the best of my knowledge and belief and shows all the information required by law and the rules issued and prescribed by the Department of Environmental Protection.

Dwayne D. Matheny
Dwayne D. Matheny, P.S. 2070



| Tag | Bearing | Dist. |
|-----|------------|----------|
| L1 | S 76°20' W | 2,949.9' |
| L2 | N 75°51' W | 2,336.3' |
| L3 | N 29°27' W | 2,064.7' |
| L4 | N 46°51' E | 1,191.4' |
| L5 | N 36°47' E | 1,204.2' |

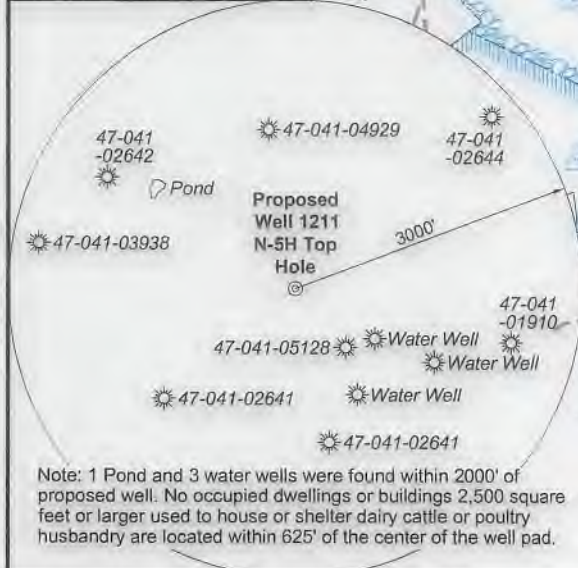
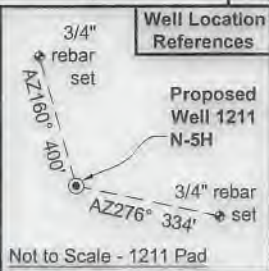
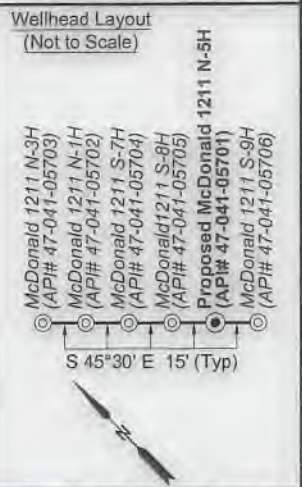
Notes:
Well No. 1211 N-5H
UTM NAD 1983 (USSF)
Top Hole Coordinates
N: 14,211,837.96'
E: 1,789,516.42'
Landing Point Coordinates
N: 14,212,802.35'
E: 1,790,237.59'
Defection Point Coordinates
N: 14,225,456.87'
E: 1,785,765.95'
Bottom Hole Coordinates
N: 14,230,956.42'
E: 1,784,205.98'

Notes: Well No. 1211 N-5H
West Virginia Coordinate System of 1927, North Zone based upon Differential GPS Measurements.
Top Hole coordinates
Latitude: 39°08'02.02"
Longitude: 80°28'27.72"
Bottom Hole coordinates
Latitude: 39°11'11.35"
Longitude: 80°29'33.78"
UTM Zone 17, NAD 1983
Top Hole Coordinates
N: 4,331,776.874m
E: 545,445.696m
Bottom Hole Coordinates
N: 4,337,604.190m
E: 543,827.070m
Plat orientation and corner and well references are based upon the grid north meridian.
Well location references are based upon the magnetic meridian.

9,743' to Bottom Hole
4,547' to Top Hole
BTM LATITUDE 39 - 12 - 30
TOP LATITUDE 39 - 10 - 00
LONGITUDE 80 - 27 - 30

Legend

- ⊙ Proposed gas well
- ⊙ Well Reference, as noted
- ⊙ Monument, as noted
- ⊙ Existing Well, as noted
- ⊙ Existing Plugged Well, as noted
- ⊙ Digitized Well, as noted
- County Line
- Existing Road
- Surface boundary (approx.)
- Interior surface tracts (approx.)



FILE NO: 79-36-12-U-F-18
DRAWING NO: 1211 N-5H Well Plat
SCALE: 1" = 2000'
MINIMUM DEGREE OF ACCURACY: Submeter
PROVEN SOURCE OF ELEVATION: CORS, Bridgeport, WV

STATE OF WEST VIRGINIA
DEPARTMENT OF ENVIRONMENTAL PROTECTION
OIL AND GAS DIVISION

DATE: December 2 2020
OPERATOR'S WELL NO. 1211 N-5H
API WELL NO
47 - 041 - 05701
STATE COUNTY PERMIT

WELL TYPE: OIL GAS LIQUID INJECTION WASTE DISPOSAL
(IF GAS) PRODUCTION: STORAGE DEEP SHALLOW

LOCATION: ELEVATION: 1,265.5' WATERSHED: Middle West Fork Creek QUADRANGLE: West Milford
DISTRICT: Freemans Creek COUNTY: Lewis
SURFACE OWNER: HG Energy II Appalachia, LLC ACREAGE: 61.50
ROYALTY OWNER: Mary R. Post, et al, et al LEASE NO: ACREAGE: 145.00
PROPOSED WORK: DRILL CONVERT DRILL DEEPER FRACTURE OR STIMULATE PLUG OFF OLD FORMATION
 PERFORATE NEW FORMATION OTHER PHYSICAL CHANGE IN WELL (SPECIFY) MOD - BHL
 PLUG AND ABANDON CLEAN OUT AND REPLUG TARGET FORMATION: Marcellus Shale ESTIMATED DEPTH: 26,490' MD 6,800' TVD

WELL OPERATOR: HG Energy II Appalachia, LLC DESIGNATED AGENT: Diane C. White
ADDRESS: 5260 Dupont Road ADDRESS: 5260 Dupont Road
Parkersburg, WV 26101 Parkersburg, WV 26101



| ID | Lease |
|----|------------------------------|
| 1 | J.L. Post, et al |
| 2 | HG Energy II Appalachia, LLC |
| 3 | Rosa L. Brown, et al |
| 4 | Cora B. Allman, et al |
| 5 | Guinn Minter, et al |
| 6 | HG Energy II Appalachia, LLC |
| 7 | W.R. Neeley, et al |
| 8 | HG Energy II Appalachia, LLC |
| 9 | J.H. Neeley & et al |
| 10 | R.C. McDonald, et al |
| 11 | R.C. McDonald, et ux, et al |
| 12 | B.F. Thrash, et ux |
| 13 | Lola McDonald, et al |
| 14 | George Paul Linn |
| 15 | HG Energy II Appalachia, LLC |
| 16 | Mary E. Post, et al |
| 17 | A.D. Beeghley & et al |
| 18 | Arthur Beeghley & et al |
| 19 | James Beeghley, et al |
| 20 | Guinn Minter, et al |
| 21 | A.W. Davis |
| 22 | Mary Robinson, et al |
| 23 | C.G. Ash |
| 24 | C.M. Garrett, et al |
| 25 | Worthy R. Lowman |
| 26 | W.L. Oldaker, et al |
| 27 | Worthy R. Lowman |
| 28 | William & Sue Gaston |
| 29 | E. Rider, et al |
| 30 | D.M. Cole, et al |
| 31 | Jesse B. Knight, et al |
| 33 | Ginn Minter, et al |
| 34 | L.W. Davis, et al |
| 35 | Henry L. Frashuer, et al |
| 36 | Henry L. Frashuer, et al |
| 38 | Mary Ann Hall, et al |
| 40 | Hallie McHagan, et al |

| No. | TM / Par | Owner | Bk / Pg | Ac. |
|-----|------------|---------------------------------------|-------------|--------|
| 1 | 7B / 10 | CNX Gas Company, LLC | 680 / 266 | 61.50 |
| 2 | 7B / 11 | CNX Gas Company, LLC | 680 / 266 | 54.50 |
| 3 | 7B / 13 | Melvin B. & Terri D. Woods | 672 / 241 | 25.50 |
| 4 | 7B / 10.1 | Charles H. & Vanessa D. Brosius | 616 / 527 | 5.00 |
| 5 | 7B / 21 | John J. Oldaker, Jr. | 658 / 56 | 65.00 |
| 6 | 7B / 22 | CNX Gas Company, LLC | 680 / 266 | 73.676 |
| 7 | 7B / 23 | Atlantic Coast Pipeline, LLC | 700 / 779 | 167.89 |
| 8 | 7B / 9 | Brincefield Family Trust | 588 / 740 | 56.76 |
| 9 | 7B / 1 | Mary Lou Curry | 681 / 628 | 98.12 |
| 10 | 6B / 40 | Robert G. & Leah V. Burnside | 660 / 388 | 126.50 |
| 11 | 444 / 15 | Marjorie Neely | 830 / 349 | 53.46 |
| 12 | 443 / 15 | John C. & Donna R. Holden | 1581 / 551 | 127.94 |
| 13 | 443 / 29.3 | Ruth Burnside | 1268 / 1188 | 1.426 |
| 14 | 443 / 29.1 | Laurie D. & Marion D. Watts Jr. | 1462 / 1312 | 0.70 |
| 15 | 443 / 29 | Danny L. & Rebecca A. Stickel | 1258 / 1130 | 39.01 |
| 16 | 443 / 29.2 | Steve L. & Nadine J. Villers | 1226 / 203 | 0.21 |
| 17 | 443 / 14 | Steve L. & Nadine J. Villers | 1180 / 529 | 102.03 |
| 18 | 443 / 16 | Elizabeth Ann Summerfield | 1548 / 263 | 11.92 |
| 19 | 423 / 28 | Christopher M. Gillespie, et al | 1479 / 475 | 88.00 |
| 20 | 423 / 27 | James C. Garrett | 1412 / 891 | 128.82 |
| 21 | 423 / 8 | James McDonald | 1570 / 597 | 176.00 |
| 22 | 423 / 7 | K. Wade & Mary M. Dickinson | 1275 / 942 | 197.98 |
| 23 | 423 / 6 | K. Wade & Mary M. Dickinson | 1275 / 942 | 127.39 |
| 24 | 423 / 20 | Jefferson Lambert & Linda J. Ashcraft | 1320 / 409 | 56.47 |
| 25 | 423 / 20.2 | Edward W. & Leeann Gump | 1320 / 404 | 1.93 |
| 26 | 423 / 20.1 | Edward W. & Leeann Gump | 1428 / 1200 | 7.54 |
| 27 | 423 / 5 | Ernest Aubrey Rider | 1136 / 136 | 137.48 |
| 28 | 423 / 6.1 | Ronald L. & Susan D. Cochran | 1588 / 403 | 0.34 |
| 29 | 423 / 7.1 | Ronald L. & Susan D. Cochran | 1588 / 403 | 0.38 |
| 30 | 423 / 7.5 | Ronald L. & Susan D. Cochran | 1588 / 403 | 0.30 |
| 31 | 423 / 7.2 | Jason Murphy | 1386 / 378 | 0.38 |
| 32 | 423 / 7.3 | Ronald L. & Susan D. Cochran | 1588 / 403 | 0.26 |
| 33 | 423 / 7.8 | Gary Leonard & Roberta L. Gray | 1268 / 729 | 1.52 |
| 34 | 423 / 7.6 | Gary Leonard & Roberta L. Gray | 1244 / 1218 | 1.00 |
| 35 | 403 / 26 | Anthony G. Queen Estates | 1320 / 223 | 1.03 |
| 36 | 403 / 25 | Arden L. Skidmore | 1622 / 1302 | 201.00 |
| 37 | 403 / 27 | Mary V. Gabriel | W146 / 481 | 63.00 |
| 38 | 403 / 29 | Mary V. Gabriel | W146 / 481 | 67.13 |
| 39 | 403 / 30 | Ronald M. & Melissa Hitt | 1244 / 401 | 56.50 |
| 40 | 403 / 4 | Clara Mae Hurst, et al | 1269 / 696 | 229.45 |
| 41 | 403 / 4.5 | Antero Midstream, LLC | 1542 / 703 | 7.00 |
| 42 | 403 / 4.6 | Stonewall Gas Gathering, LLC | 1548 / 1210 | 1.75 |
| 43 | 403 / 4.1 | Terry & Kimberly Simons | 1597 / 530 | 2.47 |
| 44 | 403 / 4.2 | David K. & Lisa A. Gaines | 1239 / 345 | 15.04 |



FILE NO: 79-36-12-U-F-18
DRAWING NO: 1211 N-5H Well Plat
SCALE: 1" = 2000'
MINIMUM DEGREE OF ACCURACY:
Submeter
PROVEN SOURCE OF ELEVATION:
CORS, Bridgeport, WV

STATE OF WEST VIRGINIA
DEPARTMENT OF ENVIRONMENTAL PROTECTION
OIL AND GAS DIVISION

DATE: December 2 2020
OPERATOR'S WELL NO. 1211 N-5H
API WELL NO
47 - 041 - 0570
STATE COUNTY PERMIT

WELL TYPE: OIL GAS LIQUID INJECTION WASTE DISPOSAL
(IF GAS) PRODUCTION: STORAGE DEEP SHALLOW

LOCATION: ELEVATION: 1,265.5' WATERSHED: Middle West Fork Creek QUADRANGLE: West Milford
DISTRICT: Freemans Creek COUNTY: Lewis
SURFACE OWNER: HG Energy II Appalachia, LLC ACREAGE: 61.50
ROYALTY OWNER: Mary R. Post, et al, et al LEASE NO: ACREAGE: 145.00
PROPOSED WORK: DRILL CONVERT DRILL DEEPER FRACTURE OR STIMULATE PLUG OFF OLD FORMATION
 PERFORATE NEW FORMATION OTHER PHYSICAL CHANGE IN WELL (SPECIFY) MOD - BHL 6,800' TVD
 PLUG AND ABANDON CLEAN OUT AND REPLUG TARGET FORMATION: Marcellus Shale ESTIMATED DEPTH: 26,490' MD

WELL OPERATOR: HG Energy II Appalachia, LLC DESIGNATED AGENT: Diane C. White
ADDRESS: 5260 Dupont Road ADDRESS: 5260 Dupont Road
Parkersburg, WV 26101 Parkersburg, WV 26101

HG Energy II Appalachia, LLC
Well No. McDolanid
1211 N-5H MOD

Page 1 of 2

| Tag | Bearing | Dist. |
|-----|------------|----------|
| L1 | S 76°20' W | 2,949.9' |
| L2 | N 75°51' W | 2,336.3' |
| L3 | N 29°27' W | 2,064.7' |
| L4 | N 46°51' E | 1,191.4' |
| L5 | N 36°47' E | 1,204.2' |

Notes:

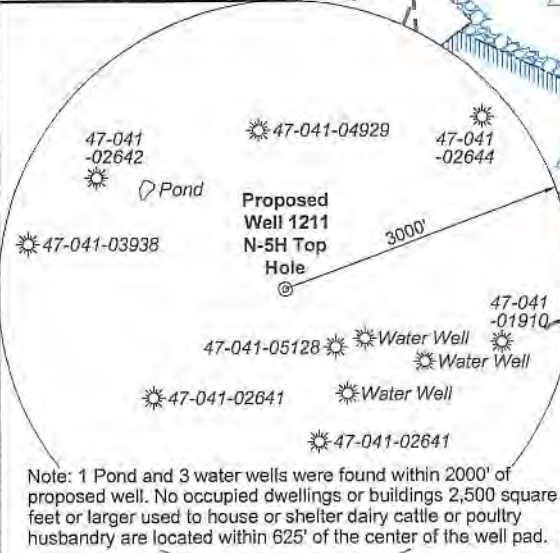
Well No. 1211 N-5H
UTM NAD 1983 (USSF)
Top Hole Coordinates
N: 14,211,837.96'
E: 1,789,516.42'
Landing Point Coordinates
N: 14,212,802.35'
E: 1,790,237.59'
Defection Point Coordinates
N: 14,225,456.87
E: 1,785,765.95
Bottom Hole Coordinates
N: 14,230,956.42'
E: 1,784,205.98'

Notes: Well No. 1211 N-5H
West Virginia Coordinate System
of 1927, North Zone
based upon Differential GPS
Measurements.

Top Hole coordinates
Latitude: 39°08'02.02"
Longitude: 80°28'27.72"
Bottom Hole coordinates
Latitude: 39°11'11.35"
Longitude: 80°29'33.78"
UTM Zone 17, NAD 1983

Top Hole Coordinates
N: 4,331,776.874m
E: 545,445.696m
Bottom Hole Coordinates
N: 4,337,604.190m
E: 543,827.070m

Plat orientation and corner
and well references are based upon
the grid north meridian.
Well location references are
based upon the magnetic
meridian.



I, the undersigned, hereby certify that this plat is correct to the best of my knowledge and belief and shows all the information required by law and the rules issued and prescribed by the Department of Environmental Protection.

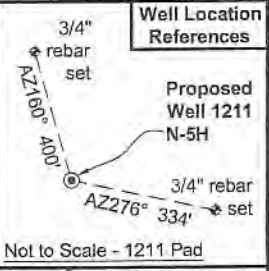
Dwayne D. Matheny, P.S. 2070



BTM LATITUDE 39 - 12 - 30
TOP LATITUDE 39 - 10 - 00

Legend

- Proposed gas well
- Well Reference, as noted
- Monument, as noted
- Existing Well, as noted
- Existing Plugged Well, as noted
- Digitized Well, as noted
- County Line
- Existing Road
- Surface boundary (approx.)
- Interior surface tracts (approx.)



FILE NO: 79-36-12-U-F-18
DRAWING NO: 1211 N-5H Well Plat
SCALE: 1" = 2000'
MINIMUM DEGREE OF ACCURACY: Submeter
PROVEN SOURCE OF ELEVATION: CORS, Bridgeport, WV

STATE OF WEST VIRGINIA
DEPARTMENT OF ENVIRONMENTAL PROTECTION
OIL AND GAS DIVISION

DATE: December 2 2020
OPERATOR'S WELL NO. 1211 N-5H
API WELL NO
47 - 041 - 05702
STATE - COUNTY PERMIT

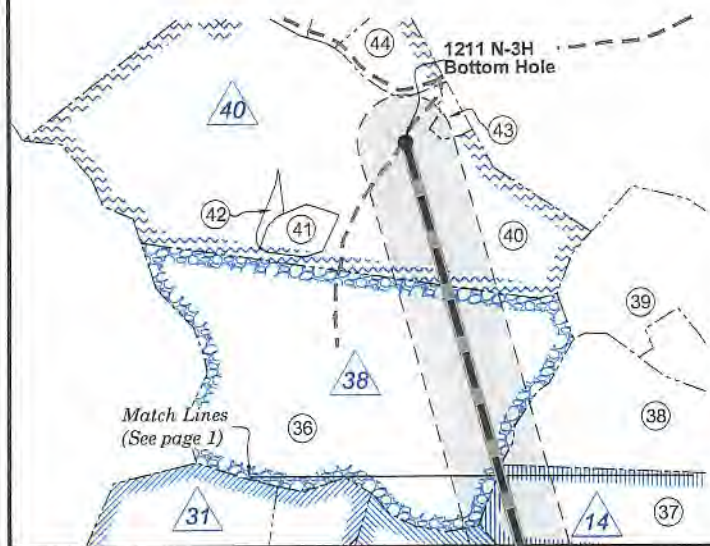
WELL TYPE: OIL GAS LIQUID INJECTION WASTE DISPOSAL
(IF GAS) PRODUCTION: STORAGE DEEP SHALLOW

LOCATION: ELEVATION: 1,265.5' WATERSHED: Middle West Fork Creek
DISTRICT: Freemans Creek
SURFACE OWNER: HG Energy II Appalachia, LLC
ROYALTY OWNER: Mary R. Post, et al, et al LEASE NO: ACREAGE: 145.00
PROPOSED WORK: DRILL CONVERT DRILL DEEPER FRACTURE OR STIMULATE PLUG OFF OLD FORMATION
 PERFORATE NEW FORMATION OTHER PHYSICAL CHANGE IN WELL (SPECIFY) MOD - BHL
 PLUG AND ABANDON CLEAN OUT AND REPLUG TARGET FORMATION: Marcellus Shale ESTIMATED DEPTH: 26,490' MD 8,800' TVD

WELL OPERATOR: HG Energy II Appalachia, LLC
ADDRESS: 5260 Dupont Road Parkersburg, WV 26101
DESIGNATED AGENT: Diane C. White
ADDRESS: 5260 Dupont Road Parkersburg, WV 26101



| ID | Lease |
|----|------------------------------|
| 1 | J.L. Post, et al |
| 2 | HG Energy II Appalachia, LLC |
| 3 | Rosa L. Brown, et al |
| 4 | Cora B. Allman, et al |
| 5 | Guinn Minter, et al |
| 6 | HG Energy II Appalachia, LLC |
| 7 | W.R. Neeley, et al |
| 8 | HG Energy II Appalachia, LLC |
| 9 | J.H. Neeley & et al |
| 10 | R.C. McDonald, et al |
| 11 | R.C. McDonald, et ux, et al |
| 12 | B.F. Thrash, et ux |
| 13 | Lola McDonald, et al |
| 14 | George Paul Linn |
| 15 | HG Energy II Appalachia, LLC |
| 16 | Mary E. Post, et al |
| 17 | A.D. Beeghley & et al |
| 18 | Arthur Beeghley & et al |
| 19 | James Beeghley, et al |
| 20 | Guinn Minter, et al |
| 21 | A.W. Davis |
| 22 | Mary Robinson, et al |
| 23 | C.C. Ash |
| 24 | C.M. Garrett, et al |
| 25 | Worthy R. Lowman |
| 26 | W.L. Oldaker, et al |
| 27 | Worthy R. Lowman |
| 28 | William & Sue Gaston |
| 29 | E. Rider, et al |
| 30 | D.M. Cole, et al |
| 31 | Jesse B. Knight, et al |
| 33 | Ginn Minter, et al |
| 34 | L.W. Davis, et al |
| 35 | Henry L. Frashuer, et al |
| 36 | Henry L. Frashuer, et al |
| 38 | Mary Ann Hall, et al |
| 40 | Hallie McLagan, et al |



| No. | TM / Par | Owner | Bk / Pg | Ac. |
|-----|------------|---------------------------------------|-------------|--------|
| 1 | 7B / 10 | CNX Gas Company, LLC | 680 / 266 | 61.50 |
| 2 | 7B / 11 | CNX Gas Company, LLC | 680 / 266 | 54.50 |
| 3 | 7B / 13 | Melvin B. & Terri D. Woods | 672 / 241 | 25.50 |
| 4 | 7B / 10.1 | Charles H. & Vanessa D. Brosius | 616 / 527 | 5.00 |
| 5 | 7B / 21 | John J. Oldaker, Jr. | 658 / 56 | 65.00 |
| 6 | 7B / 22 | CNX Gas Company, LLC | 680 / 266 | 73.676 |
| 7 | 7B / 23 | Atlantic Coast Pipeline, LLC | 700 / 779 | 167.89 |
| 8 | 7B / 9 | Brincefield Family Trust | 588 / 740 | 56.76 |
| 9 | 7B / 1 | Mary Lou Curry | 681 / 626 | 98.12 |
| 10 | 6B / 40 | Robert G. & Leah V. Burnside | 660 / 388 | 126.50 |
| 11 | 444 / 15 | Marjorie Neely | 830 / 349 | 53.46 |
| 12 | 443 / 15 | John C. & Donna R. Holden | 1581 / 551 | 127.94 |
| 13 | 443 / 29.3 | Ruth Burnside | 1268 / 1168 | 1.426 |
| 14 | 443 / 29.1 | Laurie D. & Marion D. Watts Jr. | 1462 / 1312 | 0.70 |
| 15 | 443 / 29 | Danny L. & Rebecca A. Stickel | 1258 / 1130 | 39.01 |
| 16 | 443 / 29.2 | Steve L. & Nadine J. Villers | 1226 / 203 | 0.21 |
| 17 | 443 / 14 | Steve L. & Nadine J. Villers | 1180 / 529 | 102.03 |
| 18 | 443 / 16 | Elizabeth Ann Summerfield | 1548 / 263 | 11.92 |
| 19 | 423 / 28 | Christopher M. Gillespie, et al | 1479 / 475 | 88.00 |
| 20 | 423 / 27 | James C. Garrett | 1412 / 891 | 128.82 |
| 21 | 423 / 8 | James McDonald | 1570 / 597 | 176.00 |
| 22 | 423 / 7 | K. Wade & Mary M. Dickinson | 1275 / 942 | 197.98 |
| 23 | 423 / 6 | K. Wade & Mary M. Dickinson | 1275 / 492 | 127.39 |
| 24 | 423 / 20 | Jefferson Lambert & Linda J. Ashcraft | 1320 / 409 | 56.47 |
| 25 | 423 / 20.2 | Edward W. & Leeann Gump | 1320 / 404 | 1.93 |
| 26 | 423 / 20.1 | Edward W. & Leeann Gump | 1428 / 1200 | 7.54 |
| 27 | 423 / 5 | Ernest Aubrey Rider | 1136 / 136 | 137.48 |
| 28 | 423 / 6.1 | Ronald L. & Susan D. Cochran | 1588 / 403 | 0.34 |
| 29 | 423 / 7.1 | Ronald L. & Susan D. Cochran | 1588 / 403 | 0.38 |
| 30 | 423 / 7.5 | Ronald L. & Susan D. Cochran | 1588 / 403 | 0.30 |
| 31 | 423 / 7.2 | Jason Murphy | 1386 / 378 | 0.38 |
| 32 | 423 / 7.3 | Ronald L. & Susan D. Cochran | 1588 / 403 | 0.26 |
| 33 | 423 / 7.8 | Gary Leonard & Roberta L. Gray | 1268 / 729 | 1.52 |
| 34 | 423 / 7.6 | Gary Leonard & Roberta L. Gray | 1244 / 1218 | 1.00 |
| 35 | 403 / 26 | Anthony G. Queen Estates | 1320 / 223 | 1.03 |
| 36 | 403 / 25 | Arden L. Skidmore | 1622 / 1302 | 201.00 |
| 37 | 403 / 27 | Mary V. Gabriel | W146 / 481 | 63.00 |
| 38 | 403 / 29 | Mary V. Gabriel | W146 / 481 | 67.13 |
| 39 | 403 / 30 | Ronald M. & Melissa Hitt | 1244 / 401 | 56.50 |
| 40 | 403 / 4 | Clara Mae Hurst, et al | 1269 / 696 | 229.45 |
| 41 | 403 / 4.5 | Antero Midstream, LLC | 1542 / 703 | 7.00 |
| 42 | 403 / 4.6 | Stonewall Gas Gathering, LLC | 1548 / 1210 | 1.75 |
| 43 | 403 / 4.1 | Terry & Kimberly Simons | 1597 / 530 | 2.47 |
| 44 | 403 / 4.2 | David K. & Lisa A. Gaines | 1239 / 345 | 15.04 |

FILE NO: 79-36-12-U-F-18
DRAWING NO: 1211 N-5H Well Plat
SCALE: 1" = 2000'
MINIMUM DEGREE OF ACCURACY:
Submeter
PROVEN SOURCE OF ELEVATION:
CORS, Bridgeport, WV

STATE OF WEST VIRGINIA
DEPARTMENT OF ENVIRONMENTAL PROTECTION
OIL AND GAS DIVISION

DATE: December 2 2020
OPERATOR'S WELL NO. 1211 N-5H
API WELL NO
47 - 041 - 05702
STATE COUNTY PERMIT

WELL TYPE: OIL GAS LIQUID INJECTION WASTE DISPOSAL
(IF GAS) PRODUCTION: STORAGE DEEP SHALLOW

LOCATION: ELEVATION: 1,265.5' WATERSHED: Middle West Fork Creek QUADRANGLE: West Milford
DISTRICT: Freemans Creek COUNTY: Lewis
SURFACE OWNER: HG Energy II Appalachia, LLC ACREAGE: 61.50
ROYALTY OWNER: Mary R. Post, et al, et al LEASE NO: ACREAGE: 145.00
PROPOSED WORK: DRILL CONVERT DRILL DEEPER FRACTURE OR STIMULATE PLUG OFF OLD FORMATION
 PERFORATE NEW FORMATION OTHER PHYSICAL CHANGE IN WELL (SPECIFY) MOD - BHL 6,800' TVD
 PLUG AND ABANDON CLEAN OUT AND REPLUG TARGET FORMATION: Marcellus Shale ESTIMATED DEPTH: 28,490' MD

WELL OPERATOR: HG Energy II Appalachia, LLC DESIGNATED AGENT: Diane C. White
ADDRESS: 5260 Dupont Road ADDRESS: 5260 Dupont Road
Parkersburg, WV 26101 Parkersburg, WV 26101

WW-6A1
(5/13)

Operator's Well No. McDonald 1211 N-5H

**INFORMATION SUPPLIED UNDER WEST VIRGINIA CODE
Chapter 22, Article 6A, Section 5(a)(5)
IN LIEU OF FILING LEASE(S) AND OTHER CONTINUING CONTRACT(S)**

Under the oath required to make the verification on page 1 of this Notice and Application, I depose and say that I am the person who signed the Notice and Application for the Applicant, and that –

- (1) the tract of land is the same tract described in this Application, partly or wholly depicted in the accompanying plat, and described in the Construction and Reclamation Plan;
- (2) the parties and recordation data (if recorded) for lease(s) or other continuing contract(s) by which the Applicant claims the right to extract, produce or market the oil or gas are as follows:

| Lease Name or Number | Grantor, Lessor, etc. | Grantee, Lessee, etc. | Royalty | Book/Page |
|----------------------|-----------------------|-----------------------|---------|-----------|
|----------------------|-----------------------|-----------------------|---------|-----------|

**** See Attached Sheets ****

RECEIVED
Office of Oil and Gas

DEC 16 2020

WV Department of
Environmental Protection

**Acknowledgement of Possible Permitting/Approval
In Addition to the Office of Oil and Gas**

The permit applicant for the proposed well work addressed in this application hereby acknowledges the possibility of the need for permits and/or approvals from local, state, or federal entities in addition to the DEP, Office of Oil and Gas, including but not limited to the following:

- WV Division of Water and Waste Management
- WV Division of Natural Resources WV Division of Highways
- U.S. Army Corps of Engineers
- U.S. Fish and Wildlife Service
- County Floodplain Coordinator

The applicant further acknowledges that any Office of Oil and Gas permit in no way overrides, replaces, or nullifies the need for other permits/approvals that may be necessary and further affirms that all needed permits/approvals should be acquired from the appropriate authority before the affected activity is initiated.

Well Operator: HG Energy II Appalachia, LLC
 By: Diane White *Diane White*
 Its: Agent

HG Energy II Appalachia, LLC
McDonald 1211 N-5H Lease Chain

RECEIVED
Office of Oil and Gas
DEC 16 2020
WV Department of
Environmental Protection

4704105701

| TRACT # | LEGACY LEASE NUMBER | TAX MAP | LEASE NUMBER | GRANTOR/LESSOR | GRANTEE/LESSEE | ROYALTY | DEED BOOK | PAGE |
|------------------------------------|------------------------------------|---|---------------|---|--|---|---------------|------|
| 16 | FK053254 | 03-007B-0010-0000 03-007B-0011-0000 03-007B-0013-0000 p/o 03-007B-0010-0001 | Q10048600 | MARY E. POST; J. L. POST; F. L. POST AND B. J. POST, HIS WIFE; IDA B. GASTON AND CLARK GASTON, HER HUSBAND; G. W. POST AND FLAVA POST, HIS WIFE | RESERVE GAS COMPANY | NOT LESS THAN 1/8 | 68 | 291 |
| | | | | RESERVE GAS COMPANY | HOPE NATURAL GAS COMPANY | CONFIRMATORY DEED | 155 | 202 |
| | | | | HOPE NATURAL GAS COMPANY | CONSOLIDATED GAS SUPPLY CORPORATION | CONFIRMATORY DEED | 294 | 89 |
| | | | | CONSOLIDATED GAS SUPPLY CORPORATION | CONSOLIDATED GAS TRANSMISSION CORPORATION | ASSIGNMENT | 425 | 127 |
| | | | | CONSOLIDATED GAS TRANSMISSION CORPORATION | CNG TRANSMISSION CORPORATION | MERGER/NAME CHANGE | WVSOS | |
| | | | | CNG TRANSMISSION CORPORATION | DOMINION TRANSMISSION, INC. | MERGER/NAME CHANGE | WVSOS | |
| | | | | DOMINION TRANSMISSION, INC. | DOMINION EXPLORATION & PRODUCTION, INC. | ASSIGNMENT | 620 | 139 |
| | | | | DOMINION EXPLORATION & PRODUCTION, INC. | DOMINION TRANSMISSION, INC. | ASSIGNMENT | 651 | 137 |
| | | | | DOMINION TRANSMISSION, INC. | CNX GAS COMPANY LLC | MEMORANDUM FARMOUT AGREEMENT | 672 | 154 |
| | | | | CNX GAS COMPANY LLC | NOBLE ENERGY, INC. | LIMITED PARTIAL ASSIGNMENT (50%) | 684 | 57 |
| | | | | DOMINION TRANSMISSION, INC. | CNX GAS COMPANY LLC AND NOBLE ENERGY, INC. | PARTIAL ASSIGNMENT (32%) | 712 | 848 |
| | | | | CNX GAS COMPANY LLC | NOBLE ENERGY, INC. | ASSIGNMENT | 717 | 1 |
| | | | | NOBLE ENERGY, INC. | HG ENERGY II APPALACHIA, LLC | ASSIGNMENT | 722 | 139 |
| | | | | DOMINION TRANSMISSION, INC. | DOMINION ENERGY TRANSMISSION, INC. | MERGER/NAME CHANGE | WVSOS | |
| | | | | DOMINION ENERGY TRANSMISSION, INC. | HG ENERGY II APPALACHIA, LLC | SECOND AMENDMENT TO MEMORANDUM OF FARMOUT AGREEMENT | 723 | 499 |
| DOMINION ENERGY TRANSMISSION, INC. | HG ENERGY II APPALACHIA, LLC | AMENDED AND RESTATED PARTIAL ASSIGNMENT | 723 | 527 | | | | |
| 20 | FK108080 | 20-0443-0029-0000 20-0443-0029-0001 20-0443-0029-0003 20-0444-0002-0000 20-0444-0001-0000 20-0444-0024-0000 20-00444-0025-0000 p/o 03-007B-0001-0000 p/o 03-007B-0001-0000 p/o 20-0443-0015-0000 p/o 20-0443-0016-0000 p/o 20-0443-0015-0000 | Q101020000 | GUINN MINTER AND JANE MINTER, HIS WIFE | RESERVE GAS COMPANY | NOT LESS THAN 1/8 | LEWIS 227 | 174 |
| | | | | RESERVE GAS COMPANY | HOPE NATURAL GAS COMPANY | CONFIRMATORY DEED | HARRISON 174 | 203 |
| | | | | HOPE NATURAL GAS COMPANY | CONSOLIDATED GAS SUPPLY CORPORATION | CONFIRMATORY DEED | LEWIS 155 | 202 |
| | | | | CONSOLIDATED GAS SUPPLY CORPORATION | CONSOLIDATED GAS TRANSMISSION CORPORATION | CONFIRMATORY DEED | HARRISON 508 | 573 |
| | | | | CONSOLIDATED GAS TRANSMISSION CORPORATION | CNG TRANSMISSION CORPORATION | CONFIRMATORY DEED | LEWIS 294 | 89 |
| | | | | CNG TRANSMISSION CORPORATION | DOMINION TRANSMISSION, INC. | CONFIRMATORY DEED | HARRISON 903 | 179 |
| | | | | DOMINION TRANSMISSION, INC. | CNX GAS COMPANY LLC | ASSIGNMENT | LEWIS 425 | 127 |
| | | | | DOMINION TRANSMISSION, INC. | CNX GAS COMPANY LLC | ASSIGNMENT | HARRISON 1136 | 250 |
| | | | | CNX GAS COMPANY LLC | NOBLE ENERGY, INC. | MEMORANDUM FARMOUT AGREEMENT | LEWIS 672 | 154 |
| | | | | NOBLE ENERGY, INC. | HG ENERGY II APPALACHIA, LLC | MEMORANDUM FARMOUT AGREEMENT | HARRISON 1522 | 33 |
| | | | | DOMINION TRANSMISSION, INC. | CNX GAS COMPANY LLC | FIRST AMENDMENT TO MEMORANDUM FARMOUT AGREEMENT | HARRISON 1524 | 491 |
| | | | | CNX GAS COMPANY LLC | NOBLE ENERGY, INC. | LIMITED PARTIAL ASSIGNMENT (50%) | LEWIS 684 | 57 |
| | | | | DOMINION TRANSMISSION, INC. | CNX GAS COMPANY LLC AND NOBLE ENERGY, INC. | PARTIAL ASSIGNMENT (32%) | LEWIS 712 | 848 |
| | | | | CNX GAS COMPANY LLC | NOBLE ENERGY, INC. | ASSIGNMENT | HARRISON 1576 | 125 |
| | | | | NOBLE ENERGY, INC. | HG ENERGY II APPALACHIA, LLC | ASSIGNMENT | LEWIS 717 | 1 |
| NOBLE ENERGY, INC. | HG ENERGY II APPALACHIA, LLC | ASSIGNMENT | LEWIS 722 | 139 | | | | |
| DOMINION TRANSMISSION, INC. | DOMINION ENERGY TRANSMISSION, INC. | ASSIGNMENT | HARRISON 1600 | 660 | | | | |
| DOMINION ENERGY TRANSMISSION, INC. | HG ENERGY II APPALACHIA, LLC | MERGER/NAME CHANGE | HARRISON 1600 | 692 | | | | |
| DOMINION ENERGY TRANSMISSION, INC. | HG ENERGY II APPALACHIA, LLC | AMENDED AND RESTATED PARTIAL ASSIGNMENT | WVSOS | | | | | |
| DOMINION ENERGY TRANSMISSION, INC. | HG ENERGY II APPALACHIA, LLC | AMENDED AND RESTATED PARTIAL ASSIGNMENT | LEWIS 723 | 527 | | | | |
| DOMINION ENERGY TRANSMISSION, INC. | HG ENERGY II APPALACHIA, LLC | SECOND AMENDMENT TO MEMORANDUM OF FARMOUT AGREEMENT | LEWIS 723 | 499 | | | | |
| DOMINION ENERGY TRANSMISSION, INC. | HG ENERGY II APPALACHIA, LLC | FARMOUT AGREEMENT | HARRISON 1601 | 581 | | | | |

4704105701

| | | | | | | | | | | | | |
|---|--|---|---------------|------------------------------------|--|---|-------------|--|-------------------------------------|-------------------|-----|-----|
| 3 | FK064839 | p/o 03-007B-0005-000 | Q100982000 | DOMINION TRANSMISSION, INC. | CNX GAS COMPANY LLC | MEMORANDUM FARMOUT AGREEMENT | 672 | 154 | | | | |
| | | | | CNX GAS COMPANY LLC | NOBLE ENERGY, INC. | LIMITED PARTIAL ASSIGNMENT (50%) | 684 | 57 | | | | |
| | | | | DOMINION TRANSMISSION, INC. | CNX GAS COMPANY LLC AND NOBLE ENERGY, INC. | PARTIAL ASSIGNMENT (32%) | 712 | 848 | | | | |
| | | | | CNX GAS COMPANY LLC | NOBLE ENERGY, INC. | ASSIGNMENT | 717 | 1 | | | | |
| | | | | CNX GAS COMPANY LLC | NOBLE ENERGY, INC. | CORRECTIVE ASSIGNMENT AND BILL OF SALE | 725 | 784 | | | | |
| | | | | NOBLE ENERGY, INC. | HG ENERGY II APPALACHIA, LLC | ASSIGNMENT | 722 | 139 | | | | |
| | | | | NOBLE ENERGY, INC. | HG ENERGY II APPALACHIA, LLC | ASSIGNMENT | 722 | 170 | | | | |
| | | | | DOMINION TRANSMISSION, INC. | DOMINION ENERGY TRANSMISSION, INC. | MERGER/NAME CHANGE | | WVSOS | | | | |
| | | | | DOMINION ENERGY TRANSMISSION, INC. | HG ENERGY II APPALACHIA, LLC | SECOND AMENDMENT TO MEMORANDUM OF | 723 | 527 | | | | |
| | | | | DOMINION ENERGY TRANSMISSION, INC. | HG ENERGY II APPALACHIA, LLC | AMENDED AND RESTATED PARTIAL ASSIGNMENT | 723 | 499 | | | | |
| | | | | 4 | FK064848 | p/o 03-007B-0023-000 | Q1100599000 | CORA B. ALLMAN AND S. M. ALLMAN, HER HUSBAND | HOPE NATURAL GAS COMPANY | NOT LESS THAN 1/8 | 224 | 222 |
| | | | | | | | | HOPE NATURAL GAS COMPANY | CONSOLIDATED GAS SUPPLY CORPORATION | CONFIRMATORY DEED | 294 | 89 |
| CONSOLIDATED GAS SUPPLY CORPORATION | CONSOLIDATED GAS TRANSMISSION CORPORATION | ASSIGNMENT | 425 | | | | | 127 | | | | |
| CONSOLIDATED GAS TRANSMISSION CORPORATION | CNG TRANSMISSION CORPORATION | MERGER/NAME CHANGE | | | | | | WVSOS | | | | |
| CNG TRANSMISSION CORPORATION | DOMINION TRANSMISSION, INC. | MERGER/NAME CHANGE | | | | | | WVSOS | | | | |
| DOMINION TRANSMISSION, INC. | CNX GAS COMPANY LLC | MEMORANDUM FARMOUT AGREEMENT | 672 | | | | | 154 | | | | |
| CNX GAS COMPANY LLC | NOBLE ENERGY, INC. | LIMITED PARTIAL ASSIGNMENT (50%) | 684 | | | | | 57 | | | | |
| DOMINION TRANSMISSION, INC. | CNX GAS COMPANY LLC AND NOBLE ENERGY, INC. | PARTIAL ASSIGNMENT (32%) | 712 | | | | | 848 | | | | |
| CNX GAS COMPANY LLC | NOBLE ENERGY, INC. | ASSIGNMENT | 717 | | | | | 1 | | | | |
| NOBLE ENERGY, INC. | HG ENERGY II APPALACHIA, LLC | ASSIGNMENT | 722 | | | | | 139 | | | | |
| NOBLE ENERGY, INC. | HG ENERGY II APPALACHIA, LLC | ASSIGNMENT | 722 | | | | | 170 | | | | |
| DOMINION TRANSMISSION, INC. | DOMINION ENERGY TRANSMISSION, INC. | MERGER/NAME CHANGE | | | | | | WVSOS | | | | |
| DOMINION ENERGY TRANSMISSION, INC. | HG ENERGY II APPALACHIA, LLC | SECOND AMENDMENT TO MEMORANDUM OF FARMOUT AGREEMENT | 723 | | | | | 527 | | | | |
| DOMINION ENERGY TRANSMISSION, INC. | HG ENERGY II APPALACHIA, LLC | AMENDED AND RESTATED PARTIAL ASSIGNMENT | 723 | | | | | 499 | | | | |
| GUINN MINTER AND JANE MINTER, HIS WIFE | RESERVE GAS COMPANY | NOT LESS THAN 1/8 | LEWIS 227 | | | | | 174 | | | | |
| RESERVE GAS COMPANY | HOPE NATURAL GAS COMPANY | CONFIRMATORY DEED | HARRISON 174 | | | | | 203 | | | | |
| HOPE NATURAL GAS COMPANY | CONSOLIDATED GAS SUPPLY CORPORATION | CONFIRMATORY DEED | LEWIS 155 | | | | | 202 | | | | |
| CONSOLIDATED GAS SUPPLY CORPORATION | CONSOLIDATED GAS TRANSMISSION CORPORATION | CONFIRMATORY DEED | HARRISON 508 | | | | | 573 | | | | |
| CONSOLIDATED GAS TRANSMISSION CORPORATION | CNG TRANSMISSION CORPORATION | CONFIRMATORY DEED | LEWIS 294 | | | | | 89 | | | | |
| CNG TRANSMISSION CORPORATION | DOMINION TRANSMISSION, INC. | CONFIRMATORY DEED | HARRISON 903 | | | | | 179 | | | | |
| DOMINION TRANSMISSION, INC. | DOMINION TRANSMISSION, INC. | ASSIGNMENT | LEWIS 425 | | | | | 127 | | | | |
| DOMINION TRANSMISSION, INC. | CNX GAS COMPANY LLC | ASSIGNMENT | HARRISON 1136 | | | | | 250 | | | | |
| DOMINION TRANSMISSION, INC. | CNX GAS COMPANY LLC | MERGER/NAME CHANGE | | | | | | WVSOS | | | | |
| DOMINION TRANSMISSION, INC. | CNX GAS COMPANY LLC | MERGER/NAME CHANGE | | | | | | WVSOS | | | | |
| DOMINION TRANSMISSION, INC. | CNX GAS COMPANY LLC | MEMORANDUM FARMOUT AGREEMENT | LEWIS 672 | 154 | | | | | | | | |
| DOMINION TRANSMISSION, INC. | CNX GAS COMPANY LLC | FIRST AMENDMENT TO MEMORANDUM FARMOUT AGREEMENT | HARRISON 1522 | 33 | | | | | | | | |
| CNX GAS COMPANY LLC | NOBLE ENERGY, INC. | LIMITED PARTIAL ASSIGNMENT (50%) | LEWIS 684 | 57 | | | | | | | | |
| DOMINION TRANSMISSION, INC. | CNX GAS COMPANY LLC AND NOBLE ENERGY, INC. | PARTIAL ASSIGNMENT (32%) | HARRISON 1543 | 1235 | | | | | | | | |
| CNX GAS COMPANY LLC | NOBLE ENERGY, INC. | ASSIGNMENT | LEWIS 712 | 848 | | | | | | | | |
| NOBLE ENERGY, INC. | HG ENERGY II APPALACHIA, LLC | ASSIGNMENT | HARRISON 1576 | 125 | | | | | | | | |
| NOBLE ENERGY, INC. | HG ENERGY II APPALACHIA, LLC | ASSIGNMENT | LEWIS 717 | 1 | | | | | | | | |
| DOMINION TRANSMISSION, INC. | DOMINION ENERGY TRANSMISSION, INC. | MERGER/NAME CHANGE | HARRISON 1584 | 942 | | | | | | | | |
| DOMINION ENERGY TRANSMISSION, INC. | HG ENERGY II APPALACHIA, LLC | AMENDED AND RESTATED PARTIAL ASSIGNMENT | LEWIS 722 | 139 | | | | | | | | |
| DOMINION ENERGY TRANSMISSION, INC. | HG ENERGY II APPALACHIA, LLC | SECOND AMENDMENT TO MEMORANDUM OF FARMOUT AGREEMENT | HARRISON 1600 | 660 | | | | | | | | |
| DOMINION ENERGY TRANSMISSION, INC. | HG ENERGY II APPALACHIA, LLC | FARMOUT AGREEMENT | HARRISON 1600 | 692 | | | | | | | | |
| DOMINION ENERGY TRANSMISSION, INC. | HG ENERGY II APPALACHIA, LLC | FARMOUT AGREEMENT | | WVSOS | | | | | | | | |
| DOMINION ENERGY TRANSMISSION, INC. | HG ENERGY II APPALACHIA, LLC | AMENDED AND RESTATED PARTIAL ASSIGNMENT | LEWIS 723 | 527 | | | | | | | | |
| DOMINION ENERGY TRANSMISSION, INC. | HG ENERGY II APPALACHIA, LLC | SECOND AMENDMENT TO MEMORANDUM OF FARMOUT AGREEMENT | LEWIS 723 | 499 | | | | | | | | |
| DOMINION ENERGY TRANSMISSION, INC. | HG ENERGY II APPALACHIA, LLC | FARMOUT AGREEMENT | HARRISON 1601 | 581 | | | | | | | | |

RECEIVED
Office of Oil and Gas
DEC 16 2020
WV Department of
Environmental Protection

4704105701

RECEIVED
Office of Oil and Gas
DEC 16 2020
WV Department of
Environmental Protection

| | | | | | | | | |
|------------------------------------|------------------------------|---|---------------|---|--|---|---------------|------|
| 7 | FK052898 | 20-0443-0015-0000 20-0444-0015-0000 | Q100381000 | W.R. NEELY AND L.E. NEELY | RESERVE GAS COMPANY | NOT LESS THAN 1/8 | 174 | 205 |
| | | | | EDWARD G. SMITH AND JESSIE B. SMITH | RESERVE GAS COMPANY | FEE CONVEYANCE | 77 | 264 |
| | | | | RESERVE GAS COMPANY | HOPE NATURAL GAS COMPANY | FEE CONVEYANCE | 508 | 573 |
| | | | | HOPE NATURAL GAS COMPANY | CONSOLIDATED GAS SUPPLY CORPERATION | MERGER/NAME CHANGE | 903 | 179 |
| | | | | CONSOLIDATED GAS SUPPLY CORPERATION | CONSOLIDATED GAS TRANSMISSION CORPERATION | ASSIGNMENT | 1136 | 250 |
| | | | | CONSOLIDATED GAS TRANSMISSION CORPERATION | CNG GAS TRANSMISSION CORPERATION | MERGER/NAME CHANGE | 51 | 795 |
| | | | | CNG GAS TRANSMISSION CORPERATION | DOMINION TRANSMISSION, INC | MERGER/NAME CHANGE | 58 | 362 |
| | | | | DOMINION TRANSMISSION, INC | CNX GAS COMPANY, LLC | FARMOUT AGREEMENT | 1522 | 33 |
| | | | | DOMINION TRANSMISSION, INC | CNX GAS COMPANY, LLC | AMENDMENT TO FARMOUT AGREEMENT | 1524 | 491 |
| | | | | CNX GAS COMPANY, LLC | NOBLE ENERGY, INC | LIMITED PARTIAL ASSIGNMENT OF FARMOUT | 1543 | 1235 |
| | | | | CNX GAS COMPANY, LLC | NOBLE ENERGY, INC | ASSIGNMENT | 1584 | 942 |
| | | | | NOBLE ENERGY, INC. | HG ENERGY II APPALACHIA, LLC | ASSIGNMENT | 1600 | 692 |
| | | | | DOMINION TRANSMISSION INC | DOMINION ENERGY TRANSMISSION, INC. | MERGER/NAME CHANGE | WVSOS | |
| DOMINION ENERGY TRANSMISSION INC. | HG ENERGY II APPALACHIA, LLC | SECOND AMENDMENT TO MEMORANDUM OF FARMOUT AGREEMENT | 1601 | 581 | | | | |
| 8 | FK052752 | 20-0443-0015-0000 20-0444-0016-0000 20-0444-0017-0000 20-0444-0018-0000 20-0444-0018-0001 p/o 03-0007-0001-0000 04-007B-0001-0000 | FK052752 FEE | DOMINION TRANSMISSION, INC. | CNX GAS COMPANY, LLC AND NOBLE ENERGY, INC | NOT LESS THAN 1/8 | HARRISON 1601 | 563 |
| | | | | DOMINION TRANSMISSION, INC. | CNX GAS COMPANY LLC | MEMORANDUM OF FARMOUT AGREEMENT | LEWIS 692 | 570 |
| | | | | DOMINION TRANSMISSION INC | DOMINION ENERGY TRANSMISSION, INC. | MERGER/NAME CHANGE | HARRISON 1522 | 33 |
| | | | | DOMINION ENERGY TRANSMISSION INC. | HG ENERGY II APPALACHIA, LLC | SECOND AMENDMENT TO MEMORANDUM OF FARMOUT AGREEMENT | LEWIS 672 | 154 |
| | | | | CNX GAS COMPANY LLC | NOBLE ENERGY, INC. | ASSIGNMENT AND BILL OF SALE | WVSOS | |
| | | | | NOBLE ENERGY, INC. | HG ENERGY II APPALACHIA, LLC | SECOND AMENDMENT TO MEMORANDUM OF FARMOUT AGREEMENT | HARRISON 1601 | 581 |
| | | | | DOMINION ENERGY TRANSMISSION, INC. | HG ENERGY II APPALACHIA, LLC | ASSIGNMENT, BILL OF SALE AND CONVEYANCE | LEWIS 723 | 257 |
| | | | | DOMINION ENERGY TRANSMISSION, INC. | HG ENERGY II APPALACHIA, LLC | ASSIGNMENT AND BILL OF SALE | HARRISON 1584 | 942 |
| | | | | NOBLE ENERGY, INC. | HG ENERGY II APPALACHIA, LLC | ASSIGNMENT, BILL OF SALE AND CONVEYANCE | LEWIS 717 | 1 |
| | | | | DOMINION ENERGY TRANSMISSION, INC. | HG ENERGY II APPALACHIA, LLC | ASSIGNMENT, BILL OF SALE AND CONVEYANCE | HARRISON 1600 | 660 |
| DOMINION ENERGY TRANSMISSION, INC. | HG ENERGY II APPALACHIA, LLC | ASSIGNMENT, BILL OF SALE AND CONVEYANCE | LEWIS 722 | 139 | | | | |
| DOMINION ENERGY TRANSMISSION, INC. | HG ENERGY II APPALACHIA, LLC | FEE CONVEYANCE | 1627 | 1254 | | | | |
| DOMINION ENERGY TRANSMISSION, INC. | HG ENERGY II APPALACHIA, LLC | THIRD AMENDMENT TO MEMORANDUM OF FARMOUT AGREEMENT | HARRISON 1621 | 1295 | | | | |
| DOMINION ENERGY TRANSMISSION, INC. | HG ENERGY II APPALACHIA, LLC | FARMOUT AGREEMENT | LEWIS 734 | 558 | | | | |
| 9 | FK064871 | 20-0443-0014-0000 20-0443-0016-0000 p/o 20-0443-0028-0000 | Q100993000 | J. H. NEELY AND CLAUDIE NEELY, HIS WIFE (1/2) | HOPE NATURAL GAS COMPANY | NOT LESS THAN 1/8 | 732 | 315 |
| | | | | WM. A. JACKSON (1/2) | HOPE NATURAL GAS COMPANY | NOT LESS THAN 1/8 | 769 | 40 |
| | | | | HOPE NATURAL GAS COMPANY | CONSOLIDATED GAS SUPPLY CORPORATION | CONFIRMATORY DEED | 903 | 179 |
| | | | | CONSOLIDATED GAS SUPPLY CORPORATION | CONSOLIDATED GAS TRANSMISSION CORPORATION | ASSIGNMENT | 1136 | 250 |
| | | | | CONSOLIDATED GAS TRANSMISSION CORPORATION | CNG TRANSMISSION CORPORATION | MERGER/NAME CHANGE | WVSOS | |
| | | | | CNG TRANSMISSION CORPORATION | DOMINION TRANSMISSION, INC. | MERGER/NAME CHANGE | WVSOS | |
| | | | | DOMINION TRANSMISSION, INC. | CONSOL ENERGY HOLDINGS LLC VI, CONSOL ENERGY HOLDINGS LLC XVI, CONSOL GAS COMPANY LLC, CNX GAS COMPANY LLC | MERGER/NAME CHANGE | 1472 | 294 |
| | | | | DOMINION TRANSMISSION, INC. | CNX GAS COMPANY LLC | MEMORANDUM OF FARMOUT AGREEMENT | 1522 | 33 |
| | | | | CNX GAS COMPANY LLC | NOBLE ENERGY, INC. | LIMITED PARTIAL ASSIGNMENT (50%) | 1543 | 1235 |
| | | | | DOMINION TRANSMISSION, INC. | CNX GAS COMPANY LLC AND NOBLE ENERGY, INC. | PARTIAL ASSIGNMENT (32%) | 1576 | 125 |
| | | | | CNX GAS COMPANY LLC | NOBLE ENERGY, INC. | ASSIGNMENT AND BILL OF SALE | 1584 | 942 |
| | | | | NOBLE ENERGY, INC. | HG ENERGY II APPALACHIA, LLC | ASSIGNMENT, BILL OF SALE AND CONVEYANCE | 1600 | 660 |
| | | | | NOBLE ENERGY, INC. | HG ENERGY II APPALACHIA, LLC | ASSIGNMENT, BILL OF SALE AND CONVEYANCE | 1600 | 692 |
| | | | | DOMINION TRANSMISSION INC | DOMINION ENERGY TRANSMISSION, INC. | MERGER/NAME CHANGE | WVSOS | |
| | | | | DOMINION ENERGY TRANSMISSION INC. | HG ENERGY II APPALACHIA, LLC | SECOND AMENDMENT TO MEMORANDUM OF FARMOUT AGREEMENT | 1601 | 581 |

4704105701

RECEIVED
Office of Oil and Gas
DEC 16 2020
WV Department of
Environmental Protection

| | | | | | | | | |
|-------------------------------------|---|---|------------|--|--|---|------|--|
| 24 | FK064358 | 20-423-0027-0000 | Q100857000 | C.M. GARRETT AND DELPHIA GARRETT, HIS WIFE; CHARLES M. GARRETT, JR. AND HILDA GARRETT, HIS WIFE; JOSEPH R. GARRETT | HOPE NATURAL GAS COMPANY | NOT LESS THAN 1/8 | 727 | 333 |
| | | | | HOPE NATURAL GAS COMPANY | CONSOLIDATED GAS SUPPLY CORPORATION | CONFIRMATORY DEED | 903 | 179 |
| | | | | CONSOLIDATED GAS SUPPLY CORPORATION | CONSOLIDATED GAS TRANSMISSION CORPORATION | ASSIGNMENT | 1136 | 250 |
| | | | | CONSOLIDATED GAS TRANSMISSION CORPORATION | CNG TRANSMISSION CORPORATION | MERGER/NAME CHANGE | | WVSOS |
| | | | | CNG TRANSMISSION CORPORATION | DOMINION TRANSMISSION, INC. | MERGER/NAME CHANGE | | WVSOS |
| | | | | DOMINION TRANSMISSION, INC. | CNX GAS COMPANY LLC | MEMORANDUM OF FARMOUT AGREEMENT | 1522 | 33 |
| | | | | CNX GAS COMPANY LLC | NOBLE ENERGY, INC. | LIMITED PARTIAL ASSIGNMENT (50%) | 1543 | 1235 |
| | | | | DOMINION TRANSMISSION, INC. | CNX GAS COMPANY LLC AND NOBLE ENERGY, INC. | PARTIAL ASSIGNMENT (32%) | 1576 | 125 |
| | | | | CNX GAS COMPANY LLC | NOBLE ENERGY, INC. | ASSIGNMENT AND BILL OF SALE | 1584 | 942 |
| | | | | NOBLE ENERGY, INC. | HG ENERGY II APPALACHIA, LLC | ASSIGNMENT, BILL OF SALE AND CONVEYANCE | 1600 | 660 |
| DOMINION ENERGY TRANSMISSION INC. | HG ENERGY II APPALACHIA, LLC | SECOND AMENDMENT TO MEMORANDUM OF FARMOUT AGREEMENT | 1601 | 581 | | | | |
| 10 | FK052942 | 20-0423-0028-0000 | Q100477000 | R. C. MCDONALD AND M. B. MCDONALD, HIS WIFE; AND A. M. MCDONALD AND LYDIA D. MCDONALD, HIS WIFE | HOPE NATURAL GAS COMPANY | NOT LESS THAN 1/8 | 237 | 89 |
| | | | | HOPE NATURAL GAS COMPANY | RESERVE GAS COMPANY | ASSIGNMENT | 271 | 388 |
| | | | | RESERVE GAS COMPANY | HOPE NATURAL GAS COMPANY | CONFIRMATORY DEED | 508 | 573 |
| | | | | HOPE NATURAL GAS COMPANY | CONSOLIDATED GAS SUPPLY CORPORATION | CONFIRMATORY DEED | 903 | 179 |
| | | | | CONSOLIDATED GAS SUPPLY CORPORATION | CONSOLIDATED GAS TRANSMISSION CORPORATION | ASSIGNMENT | 1136 | 250 |
| | | | | CONSOLIDATED GAS TRANSMISSION CORPORATION | CNG TRANSMISSION CORPORATION | MERGER/NAME CHANGE | | WVSOS |
| | | | | CNG TRANSMISSION CORPORATION | DOMINION TRANSMISSION, INC. | MERGER/NAME CHANGE | | WVSOS |
| | | | | DOMINION TRANSMISSION, INC. | CNX GAS COMPANY LLC | MEMORANDUM OF FARMOUT AGREEMENT | 1522 | 33 |
| | | | | CNX GAS COMPANY LLC | NOBLE ENERGY, INC. | LIMITED PARTIAL ASSIGNMENT (50%) | 1543 | 1235 |
| | | | | DOMINION TRANSMISSION INC | CNX GAS COMPANY LLC AND NOBLE ENERGY, INC. | PARTIAL ASSIGNMENT (32%) | 1576 | 125 |
| | | | | CNX GAS COMPANY LLC | NOBLE ENERGY, INC. | ASSIGNMENT AND BILL OF SALE | 1584 | 942 |
| | | | | NOBLE ENERGY, INC. | HG ENERGY II APPALACHIA, LLC | ASSIGNMENT AND BILL OF SALE | 1600 | 660 |
| | | | | NOBLE ENERGY, INC. | HG ENERGY II APPALACHIA, LLC | ASSIGNMENT AND BILL OF SALE | 1600 | 692 |
| | | | | DOMINION TRANSMISSION INC | DOMINION ENERGY TRANSMISSION, INC. | MERGER/NAME CHANGE | | WVSOS |
| DOMINION ENERGY TRANSMISSION, INC. | HG ENERGY II APPALACHIA, LLC | SECOND AMENDMENT TO MEMORANDUM OF FARMOUT AGREEMENT | 1601 | 581 | | | | |
| 11 | FK026553 | 17-20-0423-0008-0000, 17-20-0423-0007-0000 | Q100462000 | R C MCDONALD, M.B. MCDONALD; A.M. MCDONALD AND LYDIA MCDONALDET AL | HOPE NATURAL GAS COMPANY | NOT LESS THAN 1/8 | 237 | 94 |
| | | | | HOPE NATURAL GAS COMPANY | CONSOLIDATED GAS SUPPLY CORPERATION | MERGER/NAME CHANGE | 903 | 179 |
| | | | | CONSOLIDATED GAS SUPPLY CORPERATION | CONSOLIDATED GAS TRANSMISSION CORPERATION | ASSIGNMENT | 1136 | 250 |
| | | | | CONSOLIDATED GAS TRANSMISSION CORPERATION | CNG GAS TRANSMISSION CORPERATION | MERGER/NAME CHANGE | 51 | 795 |
| | | | | CNG GAS TRANSMISSION CORPERATION | DOMINION TRANSMISSION, INC | MERGER/NAME CHANGE | 58 | 362 |
| | | | | DOMINION TRANSMISSION, INC | CNX GAS COMPANY, LLC | FARMOUT AGREEMENT | 1522 | 33 |
| | | | | CNX GAS COMPANY, LLC | NOBLE ENERGY, INC | LIMITED PARTIAL ASSIGNMENT | 1543 | 1235 |
| | | | | CNX GAS COMPANY, LLC | NOBLE ENERGY, INC | ASSIGNMENT | 1584 | 942 |
| | | | | NOBLE ENERGY, INC. | HG ENERGY II APPALACHIA, LLC | ASSIGNMENT AND BILL OF SALE | 1600 | 660 |
| | | | | NOBLE ENERGY, INC. | HG ENERGY II APPALACHIA, LLC | ASSIGNMENT AND BILL OF SALE | 1600 | 692 |
| | | | | DOMINION TRANSMISSION INC | DOMINION ENERGY TRANSMISSION, INC. | MERGER/NAME CHANGE | | WVSOS |
| | | | | DOMINION ENERGY TRANSMISSION, INC. | HG ENERGY II APPALACHIA, LLC | SECOND AMENDMENT TO MEMORANDUM OF FARMOUT AGREEMENT | 1601 | 581 |
| | | | | | | | | B. F. THRASH AND M. E. THRASH, HIS WIE |
| HOPE NATURAL GAS COMPANY | CONSOLIDATED GAS SUPPLY CORPORATION | CONFIRMATORY DEED | 903 | | | | | 179 |
| CONSOLIDATED GAS SUPPLY CORPORATION | CONSOLIDATED GAS TRANSMISSION CORPORATION | ASSIGNMENT | 1136 | | | | | 250 |

RECEIVED
 Office of Oil and Gas
 DEC 16 2020
 WV Department of
 Environmental Protection

4704105701

| | | | | | | | | |
|----|----------|--|------------|--|--|---|-------|------|
| 12 | FK014710 | 20-0423-0006-0000 20-0423-0006-0001 p/o 20-0423-0007-0000 p/o 20-0423-0008-0000 | Q101152000 | CONSOLIDATED GAS TRANSMISSION CORPORATION | CNG TRANSMISSION CORPORATION | MERGER/NAME CHANGE | 51 | 795 |
| | | | | CNG TRANSMISSION CORPORATION | DOMINION TRANSMISSION, INC. | MERGER/NAME CHANGE | 58 | 362 |
| | | | | DOMINION TRANSMISSION, INC. | DOMINION EXPLORATION & PRODUCTION, INC. | ASSIGNMENT | 1374 | 110 |
| | | | | DOMINION EXPLORATION & PRODUCTION, INC. | DOMINION TRANSMISSION, INC. | ASSIGNMENT | 1457 | 978 |
| | | | | DOMINION TRANSMISSION INC | CONSOL ENERGY HOLDINGS LLC XVI | ASSIGNMENT (WELL #6597) | 1458 | 299 |
| | | | | CONSOL ENERGY HOLDINGS LLC XVI | CONSOL GAS COMPANY | MERGER/NAME CHANGE | 59 | 1019 |
| | | | | CONSOL GAS COMPANY | CNX GAS COMPANY LLC | MERGER/NAME CHANGE | 1472 | 294 |
| | | | | DOMINION TRANSMISSION, INC. | CNX GAS COMPANY LLC | MEMORANDUM OF FARMOUT AGREEMENT | 1522 | 33 |
| | | | | DOMINION TRANSMISSION, INC. | CNX GAS COMPANY LLC | FIRST AMENDMENT TO MEMORANDUM FARMOUT AGREEMENT | 1524 | 491 |
| | | | | CNX GAS COMPANY LLC | NOBLE ENERGY, INC. | LIMITED PARTIAL ASSIGNMENT (50%) | 1543 | 1235 |
| | | | | DOMINION TRANSMISSION, INC. | CNX GAS COMPANY LLC AND NOBLE ENERGY, INC. | PARTIAL ASSIGNMENT (32%) | 1576 | 125 |
| | | | | CNX GAS COMPANY LLC | NOBLE ENERGY, INC. | ASSIGNMENT AND BILL OF SALE | 1584 | 942 |
| | | | | NOBLE ENERGY, INC. | HG ENERGY II APPALACHIA LLC | ASSIGNMENT, BILL OF SALE AND CONVEYANCE | 1600 | 660 |
| | | | | DOMINION ENERGY TRANSMISSION, INC. | HG ENERGY II APPALACHIA LLC | SECOND AMENDMENT TO MEMORANDUM OF FARMOUT AGREEMENT | 1601 | 581 |
| 28 | FK002350 | 20-0423-0020-0000 20-0423-0020-0001 20-0423-0020-0002 | Q101147000 | WILLIAM GASTON AND SUE GASTON, HIS WIFE | SOUTH PENN OIL COMPANY | NOT LESS THAN 1/8 | 113 | 439 |
| | | | | HOPE NATURAL GAS COMPANY | CONSOLIDATED GAS SUPPLY CORPORATION | CONFIRMATORY DEED | 903 | 179 |
| | | | | PENNZOIL COMPANY | CONSOLIDATED GAS SUPPLY CORPORATION | ASSIGNMENT | 1126 | 2 |
| | | | | CONSOLIDATED GAS SUPPLY CORPORATION | CONSOLIDATED GAS TRANSMISSION CORPORATION | ASSIGNMENT | 1136 | 250 |
| | | | | CONSOLIDATED GAS TRANSMISSION CORPORATION | CNG TRANSMISSION CORPORATION | MERGER/NAME CHANGE | 51 | 795 |
| | | | | CNG TRANSMISSION CORPORATION | DOMINION TRANSMISSION, INC. | MERGER/NAME CHANGE | 58 | 362 |
| | | | | DOMINION TRANSMISSION, INC. | CNX GAS COMPANY LLC | MEMORANDUM OF FARMOUT AGREEMENT | 1522 | 33 |
| | | | | DOMINION TRANSMISSION, INC. | CNX GAS COMPANY LLC | FIRST AMENDMENT TO MEMORANDUM FARMOUT AGREEMENT | 1524 | 491 |
| | | | | CNX GAS COMPANY LLC | NOBLE ENERGY, INC. | LIMITED PARTIAL ASSIGNMENT (50%) | 1543 | 1235 |
| | | | | DOMINION TRANSMISSION, INC. | CNX GAS COMPANY LLC AND NOBLE ENERGY, INC. | PARTIAL ASSIGNMENT (32%) | 1576 | 125 |
| | | | | CNX GAS COMPANY LLC | NOBLE ENERGY, INC. | ASSIGNMENT AND BILL OF SALE | 1584 | 942 |
| | | | | NOBLE ENERGY, INC. | HG ENERGY II APPALACHIA LLC | ASSIGNMENT, BILL OF SALE AND CONVEYANCE | 1600 | 660 |
| | | | | DOMINION TRANSMISSION, INC. | DOMINION ENERGY TRANSMISSION, INC. | MERGER/NAME CHANGE | WVSOS | |
| | | | | DOMINION ENERGY TRANSMISSION, INC. | HG ENERGY II APPALACHIA LLC | SECOND AMENDMENT TO MEMORANDUM OF FARMOUT AGREEMENT | 1601 | 581 |
| 13 | FK076952 | 20-0423-0007-0000 20-0423-0007-0004 20-0423-0007-0007 | Q101000000 | LOLA MCDONALD, WIDOW; E. B. MCDONALD AND GARNET L. MCDONALD, HIS WIFE; MACEL R. NICHOLSON AND W. B. NICHOLSON, HER HUSBAND; BARBARA V. HARRIS AND RICHARD R. HARRIS, HER HUSBAND; LUCILE M. WALLS, JOHN R. MCDONALD AND NINA MCDONALD, HIS WIFE; FRANK H. MCDONALD AND EVELYN B. MCDONALD, HIS WIFE; W. PAUL MCDONALD AND FRED A. G. MCDONALD, HIS WIFE; ROBERT H. MCDONALD AND EVELYN MCDONALD, HIS WIFE; AND MARY MCDONALD, SINGLE | CONSOLIDATED GAS SUPPLY CORPORATION | NOT LESS THAN 1/8 | 936 | 533 |
| | | | | ALAMCO, INC. FORMERLY ALLEGHENY LAND AND MINERAL COMPANY | ENSOURCE INC. | PARTIAL ASSIGNMENT | 1170 | 609 |
| | | | | CONSOLIDATED GAS TRANSMISSION CORPORATION | CNG TRANSMISSION CORPORATION | MERGER/NAME CHANGE | 51 | 795 |
| | | | | ALAMCO INC | UMC PETROLEUM CORPORATION | ASSIGNMENT | 1218 | 1012 |
| | | | | UMC PETROLEUM CORPORATION | ASHLAND EXPLORATION CORPORATION INC | ASSIGNMENT | 1263 | 494 |
| | | | | CNG TRANSMISSION CORPORATION | DOMINION TRANSMISSION, INC. | MERGER/NAME CHANGE | 58 | 362 |
| | | | | DOMINION TRANSMISSION INC | DOMINION EXPLORATION AND PRODUCTION | ASSIGNMENT | 1340 | 815 |
| | | | | DOMINION EXPLORATION & PRODUCTION, INC. | DOMINION TRANSMISSION, INC. | ASSIGNMENT | 1457 | 978 |
| | | | | DOMINION TRANSMISSION, INC. | CNX GAS COMPANY LLC | MEMORANDUM OF FARMOUT AGREEMENT | 1522 | 33 |
| | | | | DOMINION TRANSMISSION, INC. | CNX GAS COMPANY LLC | FIRST AMENDMENT TO MEMORANDUM FARMOUT AGREEMENT | 1524 | 491 |
| | | | | CNX GAS COMPANY LLC | NOBLE ENERGY, INC. | LIMITED PARTIAL ASSIGNMENT (50%) | 1543 | 1235 |

4704105701

12095 LEASE CHAIN

| | | | | | | | | |
|------------------------------------|--|---|--|--|--|---|-------|------|
| 14 | FK108087 | 20-0403-0027-0000 20-0403-0027-0001 | Q100819000 | Dominion Transmission, Inc. | CNX Gas Company LLC and Noble Energy, Inc. | Partial Assignment (32%) | 1576 | 125 |
| | | | | CNX Gas Company LLC | Noble Energy, Inc. | Assignment and Bill of Sale | 1584 | 942 |
| | | | | Noble Energy, Inc. | HG Energy II Appalachia LLC | Assignment, Bill of Sale and Conveyance | 1600 | 660 |
| | | | | Dominion Transmission, Inc. | Dominion Energy Transmission, Inc. | Merger/Name Change | WVSOS | |
| | | | | Dominion Energy Transmission, Inc. | HG Energy II Appalachia LLC | Second Amendment to Memorandum of Farmout Agreement | 1601 | 581 |
| | | | | Irene Q. Linn and G. Paul Linn, her husband | Consolidated Gas Supply Corporation | Not Less Than 1/8 | 935 | 629 |
| | | | | Consolidated Gas Supply Corporation | Consolidated Gas Transmission Corporation | Assignment | 1136 | 250 |
| | | | | Consolidated Gas Transmission Corporation | CNG Transmission Corporation | Merger/Name Change | 51 | 795 |
| | | | | CNG Transmission Corporation | Dominion Transmission, Inc. | Merger/Name Change | 58 | 362 |
| | | | | Dominion Transmission, Inc. | CNX Gas Company LLC | Memorandum of Farmout Agreement | 1522 | 33 |
| CNX Gas Company LLC | Noble Energy, Inc. | Limited Partial Assignment (50%) | 1543 | 1235 | | | | |
| Dominion Transmission, Inc. | CNX Gas Company LLC and Noble Energy, Inc. | Partial Assignment (32%) | 1576 | 125 | | | | |
| CNX Gas Company LLC | Noble Energy, Inc. | Assignment and Bill of Sale | 1584 | 942 | | | | |
| Noble Energy, Inc. | HG Energy II Appalachia LLC | Assignment, Bill of Sale and Conveyance | 1600 | 660 | | | | |
| Dominion Transmission, Inc. | Dominion Energy Transmission, Inc. | Merger/Name Change | WVSOS | | | | | |
| Dominion Energy Transmission, Inc. | HG Energy II Appalachia LLC | Second Amendment to Memorandum of Farmout Agreement | 1601 | 581 | | | | |
| 15 | FK108123 FEE | 20-0403-0026-0000 | FK108123 FEE | Lucy W Queen et al | Hope Natural Gas Company | Fee Conveyance | 239 | 183 |
| | | | | Reserve Gas Company | Hope Natural Gas Company | Fee Conveyance | 508 | 573 |
| | | | | Hope Natural Gas Company | Consolidated Gas Supply Corporation | Merger/Name Change | 903 | 179 |
| | | | | Consolidated Gas Supply Corporation | Consolidated Gas Transmission Corporation | Assignment | 1136 | 250 |
| | | | | Consolidated Gas Transmission Corporation | CNG Gas Transmission Corporation | Merger/Name Change | 51 | 795 |
| | | | | CNG Gas Transmission Corporation | Dominion Transmission, Inc. | Merger/Name Change | 58 | 362 |
| | | | | Dominion Transmission, Inc. | CNX Gas Company, LLC | Farmout Agreement | 1522 | 33 |
| | | | | CNX Gas Company, LLC | Noble Energy, Inc. | Limited Partial Assignment of Farmout | 1543 | 1235 |
| | | | | CNX Gas Company, LLC | Noble Energy, Inc. | Assignment | 1584 | 942 |
| | | | | Noble Energy, Inc. | HG Energy II Appalachia, LLC | Assignment | 1600 | 692 |
| | | | | Dominion Transmission, Inc. | Dominion Energy Transmission, Inc. | Merger/Name Change | WVSOS | |
| | | | | Dominion Energy Transmission, Inc. | HG Energy II Appalachia, LLC | Second Amendment to Memorandum of Farmout Agreement | 1601 | 581 |
| | | | | Dominion Energy Transmission, Inc. | HG Energy II Appalachia, LLC | Fee Conveyance | 1627 | 1254 |
| 38 | 13993 14412 14786 15235 15236 15237 15381 15522 15523 15524 15525 15646 15647 15648 | 20-0403-0025-0000 | 13993 14412 14786 15235 15236 15237 15381 15522 15523 15524 15525 15646 15647 15648 | Hall, Mary Ann | Antero Resources Appalachian Corporation | Not Less Than 1/8 | 1501 | 687 |
| | | | | Daughtery, Arden F. and Mary D. Daughtery, his wife | Doran & Associates, Inc. | Not Less Than 1/8 | 1095 | 625 |
| | | | | Doran & Associates, Inc. | NRM Petroleum Corporation | Assignment | 1096 | 367 |
| | | | | NRM Petroleum Corporation | Natural Resource Management Corporation | Merger/Name Change | WVSOS | |
| | | | | Natural Resource Management Corporation | Edisto Resources Corporation | Merger/Name Change | WVSOS | |
| | | | | NRM Operating Company, L.P.; Edisto Resources Corporation | Eastern American Energy Corporation | Assignment | 1216 | 558 |
| | | | | Eastern American Energy Corporation | Energy Corporation of America | Assignment | 1441 | 1003 |
| | | | | Energy Corporation of America | Antero Resources Appalachia Corporation | Assignment | 1503 | 93 |
| | | | | Energy Corporation of America | Antero Resources Appalachia Corporation | Assignment | 1524 | 620 |
| | | | | Hall, Mary Ann | Antero Resources Appalachian Corporation | Not Less Than 1/8 | 1499 | 339 |
| | | | | Rymer, John William | Antero Resources Appalachian Corporation | Not Less Than 1/8 | 1500 | 961 |
| | | | | Curry, Helen Ruth | Antero Resources Appalachian Corporation | Not Less Than 1/8 | 1501 | 44 |
| | | | | Saunders, Jessie | Antero Resources Appalachian Corporation | Not Less Than 1/8 | 1501 | 672 |
| | | | | Cunningham, Nancy E. | Antero Resources Appalachian Corporation | Not Less Than 1/8 | 1501 | 677 |
| | | | | Curry, Dr. Steven T. | Antero Resources Appalachian Corporation | Not Less Than 1/8 | 1501 | 667 |
| | | | | Venetozzi, Mary Elizabeth, AKA Mary E. Venetozzi, by Michael Ventozzi, her Conservator by Order of Appointment dated Sept 28, 2010 and Recorded Nov 27, 2012 in MIS book 40, Pg 712 in Harrison County, WV | Antero Resources Appalachian Corporation | Not Less Than 1/8 | 1501 | 1200 |

REC'D
 Office of State Gas
 DEC 16 2020
 WV Department of Environmental Protection

4704105701

| | | | | | | | | |
|----|-------------------------|-------------------|-------------------------|---|---|----------------------------|-------|------|
| | 15040 15649 15707 | | 15040 15649 15707 | Curry, Marjorie, a/k/a Marjorie M. Curry, by R. Lynn Curry, her AIF | Antero Resources Appalachian Corporation | NOT LESS THAN 1/8 | 1501 | 995 |
| | | | | Curry, John H. III | Antero Resources Appalachian Corporation | NOT LESS THAN 1/8 | 1501 | 1205 |
| | | | | Curry, Krista | Antero Resources Appalachian Corporation | NOT LESS THAN 1/8 | 1501 | 1000 |
| | | | | Halterman, Naomi | Antero Resources Appalachian Corporation | NOT LESS THAN 1/8 | 1502 | 114 |
| | | | | Franklin, Eleanor Jane | Antero Resources Appalachian Corporation | NOT LESS THAN 1/8 | 1502 | 119 |
| | | | | Curry, Thomas | Antero Resources Appalachian Corporation | NOT LESS THAN 1/8 | 1502 | 124 |
| | | | | Curry, Susan G. | Antero Resources Appalachian Corporation | NOT LESS THAN 1/8 | 1502 | 962 |
| | | | | Antero Resources Appalachia Corporation | Antero Resources Corporation | MERGER / NAME CHANGE | WVSOS | |
| | | | | Antero Resources Corporation | HG ENERGY II APPALACHIA, LLC | Notice of Letter Agreement | 1705 | 100 |
| | | | | McGahan, Hallie, widow | Consolidated Gas Supply Corporation | NOT LESS THAN 1/8 | 1034 | 1094 |
| 40 | 2847, 2848, 2849 | 20-0403-0004-0000 | 2847, 2848, 2849 | Sayler, Mary M. and J.M. Sayler, w/h; Maude Caynor Todd and O.V. Todd, w/h; Harvey J. Caynor and Maude Caynor, h/w; et al | Consolidated Gas Supply Corporation | NOT LESS THAN 1/8 | 1034 | 425 |
| | | | | Wilson, Leon F. and Thelma M. Wilson, h/w; Robert L. Wilson and Cathy D. Wilson, h/w | Consolidated Gas Supply Corporation | NOT LESS THAN 1/8 | 1034 | 1090 |
| | | | | Consolidated Gas Supply Corporation | Consolidated Gas Transmission Corporation | MERGER / NAME CHANGE | WVSOS | |
| | | | | Consolidated Gas Transmission Corporation | CNG Transmission Corporation | MERGER / NAME CHANGE | WVSOS | |
| | | | | CNG Transmission Corporation | Dominion Transmission, Inc. | MERGER / NAME CHANGE | WVSOS | |
| | | | | Dominion Transmission, Inc. | Antero Resources Appalachia Corporation | ASSIGNMENT | 1423 | 1068 |
| | | | | Antero Resources Appalachia Corporation | Antero Resources Corporation | MERGER / NAME CHANGE | WVSOS | |
| | | | | Naeser, Jo Ann | Antero Resources Appalachian Corporation | NOT LESS THAN 1/8 | 1114 | 106 |
| | | | | Antero Resources Appalachia Corporation | Antero Resources Corporation | MERGER / NAME CHANGE | WVSOS | |
| | | | | Antero Resources Appalachian Corporation | HG ENERGY II APPALACHIA, LLC | Notice of Letter Agreement | 1705 | 100 |

RECEIVED
Office of Oil and Gas
DEC 16 2020
WV Department of
Environmental Protection



HG Energy, LLC
5260 Dupont Road
Parkersburg, WV 26101
(304) 420-1100 - Office
(304) 863-3172 - Fax

December 9, 2020

WV DEP
Division of Oil & Gas
Attn: Kelly Kees
601 57th Street
Charleston, West Virginia 25304

RE: McDonald 1211 N-5H Permit Revision – (47-041-05702)
Freemans Creek District, Lewis County
West Virginia

Dear Ms. Kees -

Per our discussions, enclosed are revised forms (survey plat, mylar, WW-6B, casing schematic and WW6A-1) for the 1211 N-5H well work permit. We request the permit be modified as additional leases have been secured to lengthen the lateral.

Please let me know if you have any questions or require additional information. I can be reached at (304) 420-1119 or dwhite@hgenergyllc.com.

Very truly yours,

Diane White

Diane C. White

Enclosures

cc: Barry Stollings – Inspector

RECEIVED
Office of Oil and Gas

DEC 16 2020

WV Department of
Environmental Protection

November 19, 2020
Mr. Tim Rady
Antero Resources Corporation
1615 Wynkoop Street
Denver, Colorado 80202

RE: **Permission to Permit and Drill – McDonald 1211 N – 3H and McDonald 1211 N – 5H Units**

Harrison County, West Virginia

Dear Mr. Rady,

HG Energy II Appalachia, LLC (“**HG**”) hereby requests permission of Antero Resources Corporation (“**Antero**”) to proceed with its plans to drill one or more horizontal wells in, under, and through certain properties subject to oil and gas interests in the Target Depths owned or controlled by Antero located in Harrison County, West Virginia (as more particularly described on Exhibit A to this letter agreement (for clarity, including only those portions of the properties described in the column entitled “Conveyed Interest,” and specifically excluding the portions of the properties described in the column entitled “Retained Interest,” in each case, on Exhibit A, and insofar as located within the Units (as defined below), the “**Properties**”), pursuant to the terms and conditions of this letter agreement. Antero and HG are currently negotiating an acreage trade agreement for the exchange and/or granting of certain oil and gas interests in Doddridge, Harrison, Marion, and Wetzel Counties, West Virginia (the “**Potential Trade**”). Antero and HG anticipate that the Potential Trade will include the Properties and HG desires to commence drilling the Properties for the initial development of HG’s McDonald 1211 N – 3H and McDonald 1211 N – 5H Units (as more particularly described on Exhibit B to this letter agreement, the “**Units**”) during the pendency of negotiations and in advance of the closing of the Potential Trade. As used herein, “**Target Depths**” means those depths from the top of the Rhinestreet formation, at a depth of 5,827 feet, as seen by the Antero Resources Corporation Rymer 4H pilot hole, API 47095022730000, Tyler County, West Virginia, to the center of the earth.

In order to generate mutual goodwill between Antero and HG, and for one hundred dollars (\$100.00) and other good and valuable consideration, the receipt and sufficiency of which are hereby acknowledged, Antero hereby grants HG the rights to apply for and obtain all applicable governmental permits for the drilling of one or more wellbore laterals in, under, and through the Properties (collectively, “**Wells**”) and to drill such Wells; *provided*, that Antero expressly withholds and does not grant HG the right to complete or produce the Wells on or under the Properties or to access or conduct surface operations on the Properties.

In the event that Antero and HG do not finalize, execute and close the Potential Trade within one hundred and twenty (120) days after the date of this letter agreement (the “**Trade Deadline**”), then within ten (10) days after the Trade Deadline, (a) HG will pay Antero a purchase price of \$1,000/NRI acre for the Properties, and (b) Antero will concurrently transfer and convey the

Properties to HG pursuant to a mutually agreeable form of assignment, which will contain a special warranty of title by, through, and under Antero, but not otherwise and which, for the avoidance of doubt, will (unless otherwise agreed to by HG and Antero in writing) reserve to Antero all of Antero's right, title, and interest in formations other than the Target Depths. If Antero and HG do not finalize, execute, and close the Potential Trade on or prior to or on date that is one hundred and twenty (120) days after the date of this letter agreement, Antero and HG may mutually agree to extend the Trade Deadline for an additional thirty (30) days (*provided* that the electing party must then be continuing to negotiate in good faith in order to continue to pursue the transactions contemplated by the Potential Trade) while reasonably accommodating HG's ongoing development needs and requests for the Units.

Upon the written request of HG, Antero agrees to promptly provide to Antero copies of all applicable oil and gas leases, assignments, deeds, and other instruments (including amendments, modifications, and ratifications to each of the foregoing) to the extent related to the Properties.

HG hereby agrees to release, protect, indemnify, defend and hold Antero harmless from and against any claims, expenses, damages, injuries, claims or obligations or liabilities (including reasonable attorneys' fees) that may be brought by any third party against Antero or its affiliates to the extent arising out of HG's operations pursuant to this letter agreement and that arise on or after the date of this letter agreement.

Nothing in this letter agreement will diminish any current or future rights of Antero in the Properties or other properties. This letter agreement and the rights and obligations of Antero and HG hereunder will terminate upon the earlier of (i) the assignment of the Properties to HG pursuant to the third paragraph above, or (ii) if and when Antero and HG consummate the closing of the Potential Trade with respect to the Properties. This letter agreement will be binding upon HG and Antero and their respective successors and assigns. In the event of any assignment or transfer of this letter agreement, the assigning or transferring party shall require such assignee or transferee to expressly assume and be bound by the terms of this letter agreement.

If the above meets your approval, please execute in the space provided below and return one signed copy to the letterhead address. Should you have any questions, please contact Tyler Adams at (303) 357-7249.

[Signature Page Follows.]

Sincerely,

HG Energy II Appalachia, LLC

By: **Jared Hall**
Title: **President**

Agreed to and accepted this _____ day of November, 2020.

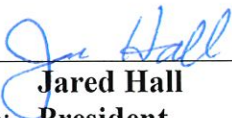
Antero Resources Corporation



By: **Tim Rady**
Title: **Vice President – Land**

Sincerely,

HG Energy II Appalachia, LLC



By: **Jared Hall**
Title: **President**

Agreed to and accepted this _____ day of November, 2020.

Antero Resources Corporation

By: **Tim Rady**
Title: **Vice President – Land**

EXHIBIT A

PROPERTIES

[Exhibit Pages Follow.]

Antero Resources Corporation
 Permission to Permit and Drill – McDonald 1211 N – 3H and McDonald 1211 N – 5H Units

| Lessor | Lessee | Lease Date | Lease Gross Acres | Conveyed Gross Acres | Conveyed Net Acres | NRI | NRI Acres | State | County | District | Book | Page | Split Tract Plat | Conveyed Interest (Tax-Map-Parcel) | Retained Interest |
|--|--|------------|-------------------|----------------------|--------------------|---------|-----------|-------|----------|----------|------|------|------------------|---|---|
| Hall, Mary Ann | Antero Resources Appalachian Corporation | 9/14/2012 | 202.89300 | 144.22800 | 18.02850 | 0.86 | 15.50451 | WV | Harrison | Union | 1499 | 339 | D | 20-403-25 (those portions crosshatched on Exhibit B- Part II (D)) | 20-403-25 (those portions dotted on Exhibit B- Part II (D)) |
| Rymer, John William | Antero Resources Appalachian Corporation | 10/18/2012 | 202.89300 | 144.22800 | 18.02850 | 0.86000 | 15.50451 | WV | Harrison | Union | 1500 | 961 | D | 20-403-25 (those portions crosshatched on Exhibit B- Part II (D)) | 20-403-25 (those portions dotted on Exhibit B- Part II (D)) |
| Curry, Helen Ruth | Antero Resources Appalachian Corporation | 10/26/2012 | 202.89300 | 144.22800 | 4.50713 | 0.86000 | 3.87613 | WV | Harrison | Union | 1501 | 44 | D | 20-403-25 (those portions crosshatched on Exhibit B- Part II (D)) | 20-403-25 (those portions dotted on Exhibit B- Part II (D)) |
| Saunders, Jessie | Antero Resources Appalachian Corporation | 10/30/2012 | 202.89300 | 144.22800 | 1.12642 | 0.86000 | 0.96872 | WV | Harrison | Union | 1501 | 672 | D | 20-403-25 (those portions crosshatched on Exhibit B- Part II (D)) | 20-403-25 (those portions dotted on Exhibit B- Part II (D)) |
| Cunningham, Nancy E. | Antero Resources Appalachian Corporation | 10/24/2012 | 202.89300 | 144.22800 | 1.12642 | 0.86000 | 0.96872 | WV | Harrison | Union | 1501 | 677 | D | 20-403-25 (those portions crosshatched on Exhibit B- Part II (D)) | 20-403-25 (those portions dotted on Exhibit B- Part II (D)) |
| Hall, Mary Ann | Antero Resources Appalachian Corporation | 10/30/2012 | 202.89300 | 144.22800 | 1.12642 | 0.86000 | 0.96872 | WV | Harrison | Union | 1501 | 687 | D | 20-403-25 (those portions crosshatched on Exhibit B- Part II (D)) | 20-403-25 (those portions dotted on Exhibit B- Part II (D)) |
| Curry, Dr. Steven T. | Antero Resources Appalachian Corporation | 10/30/2012 | 202.89300 | 144.22800 | 1.12642 | 0.86000 | 0.96872 | WV | Harrison | Union | 1501 | 667 | D | 20-403-25 (those portions crosshatched on Exhibit B- Part II (D)) | 20-403-25 (those portions dotted on Exhibit B- Part II (D)) |
| Venetozzi, Mary Elizabeth, AKA Mary E. Venetozzi, by Michael Ventozzi, her Conservator by Order of Appointment dated Sept 28, 2010 and Recorded Nov 27, 2012 in MIS book 40, Pg 712 in Harrison County, WV | Antero Resources Appalachian Corporation | 10/27/2012 | 202.89300 | 144.22800 | 4.50713 | 0.86 | 3.87613 | WV | Harrison | Union | 1501 | 1200 | D | 20-403-25 (those portions crosshatched on Exhibit B- Part II (D)) | 20-403-25 (those portions dotted on Exhibit B- Part II (D)) |
| Curry, Marjorie, a/k/a Marjorie M. Curry, by R. Lynn Curry, her AIF | Antero Resources Appalachian Corporation | 11/7/2012 | 202.89300 | 144.22800 | 4.50713 | 0.86 | 3.87613 | WV | Harrison | Union | 1501 | 995 | D | 20-403-25 (those portions crosshatched on Exhibit B- Part II (D)) | 20-403-25 (those portions dotted on Exhibit B- Part II (D)) |
| Curry, John H. III | Antero Resources Appalachian Corporation | 10/26/2012 | 202.89300 | 144.22800 | 1.12642 | 0.86 | 0.96872 | WV | Harrison | Union | 1501 | 1205 | D | 20-403-25 (those portions crosshatched on Exhibit B- Part II (D)) | 20-403-25 (those portions dotted on Exhibit B- Part II (D)) |
| Curry, Krista | Antero Resources Appalachian Corporation | 10/25/2012 | 202.89300 | 144.22800 | 1.12642 | 0.86 | 0.96872 | WV | Harrison | Union | 1501 | 1000 | D | 20-403-25 (those portions crosshatched on Exhibit B- Part II (D)) | 20-403-25 (those portions dotted on Exhibit B- Part II (D)) |
| Halterman, Naomi | Antero Resources Appalachian Corporation | 10/26/2012 | 202.89300 | 144.22800 | 4.50713 | 0.86000 | 3.87613 | WV | Harrison | Union | 1502 | 114 | D | 20-403-25 (those portions crosshatched on Exhibit B- Part II (D)) | 20-403-25 (those portions dotted on Exhibit B- Part II (D)) |
| Franklin, Eleanor Jane | Antero Resources Appalachian Corporation | 10/26/2012 | 202.89300 | 144.22800 | 4.50713 | 0.86000 | 3.87613 | WV | Harrison | Union | 1502 | 119 | D | 20-403-25 (those portions crosshatched on Exhibit B- Part II (D)) | 20-403-25 (those portions dotted on Exhibit B- Part II (D)) |
| Curry, Thomas | Antero Resources Appalachian Corporation | 10/24/2012 | 202.89300 | 144.22800 | 1.12642 | 0.86000 | 0.96872 | WV | Harrison | Union | 1502 | 124 | D | 20-403-25 (those portions crosshatched on Exhibit B- Part II (D)) | 20-403-25 (those portions dotted on Exhibit B- Part II (D)) |
| Curry, Susan G. | Antero Resources Appalachian Corporation | 10/24/2012 | 202.89300 | 144.22800 | 1.12642 | 0.86000 | 0.96872 | WV | Harrison | Union | 1502 | 962 | D | 20-403-25 (those portions crosshatched on Exhibit B- Part II (D)) | 20-403-25 (those portions dotted on Exhibit B- Part II (D)) |
| Daughtery, Arden F. and Mary D. Daughtery, his wife | Doran & Associates, Inc. | 12/1/1979 | 202.89300 | 144.22800 | 72.11400 | 0.875 | 63.09975 | WV | Harrison | Union | 1095 | 625 | D | 20-403-25 (those portions crosshatched on Exhibit B- Part II (D)) | 20-403-25 (those portions dotted on Exhibit B- Part II (D)) |

Permission to Permit and Drill – McDonald 1211 N – 3H and McDonald 1211 N – 5H Units

| | | | | | | | | | | | | | | | |
|---|-------------------------------------|-----------|-----------|----------|----------|---------|----------|----|----------|-------|------|------|---|--|--|
| Saylor, Mary M. and J.M. Saylor, w/h; Maude Caynor Todd and O.V. Todd, w/h; Harvey J. Caynor and Maude Caynor, h/w; et al | Consolidated Gas Supply Corporation | 4/24/1975 | 296.00000 | 59.71000 | 41.79700 | 0.87500 | 36.57238 | WV | Harrison | Union | 1034 | 425 | F | 20-403-p/o 4; 20-403-p/o 4.1; 20-403-4.5; 20-403.p/o 4.6 (those portions crosshatched on Exhibit B- Part II (F)) | 20-403-p/o 4; 20-403-p/o 4.1; 20-403-4.5; 20-403.p/o 4.6 (those portions dotted on Exhibit B- Part II (F)) |
| Wilson, Leon F. and Thelma M. Wilson, h/w; Robert L. Wilson and Cathy D. Wilson, h/w | Consolidated Gas Supply Corporation | 5/20/1975 | 221.00000 | 59.71000 | 7.96113 | 0.87500 | 6.96599 | WV | Harrison | Union | 1034 | 1090 | F | 20-403-p/o 4; 20-403-p/o 4.1; 20-403-4.5; 20-403.p/o 4.6 (those portions crosshatched on Exhibit B- Part II (F)) | 20-403-p/o 4; 20-403-p/o 4.1; 20-403-4.5; 20-403.p/o 4.6 (those portions dotted on Exhibit B- Part II (F)) |
| McGahan, Hallie, widow | Consolidated Gas Supply Corporation | 5/20/1975 | 296.00000 | 59.71000 | 9.95187 | 0.87500 | 8.70788 | WV | Harrison | Union | 1034 | 1094 | F | 20-403-p/o 4; 20-403-p/o 4.1; 20-403-4.5; 20-403.p/o 4.6 (those portions crosshatched on Exhibit B- Part II (F)) | 20-403-p/o 4; 20-403-p/o 4.1; 20-403-4.5; 20-403.p/o 4.6 (those portions dotted on Exhibit B- Part II (F)) |

EXHIBIT B

UNITS

| Operator | Unit Name | Unit Well API |
|---------------------------------|----------------------|---------------|
| HG Energy II Appalachia, LLC | McDonald 1211 N – 3H | 4704105703 |
| HG Energy II Appalachia, LLC | McDonald 1211 N – 5H | 4704105701 |