

4104008P

WW-7
8-30-06



West Virginia Department of Environmental Protection
Office of Oil and Gas
WELL LOCATION FORM: GPS

API: 47-041-04008 WELL NO.: Mullooly 2
FARM NAME: Yochym
RESPONSIBLE PARTY NAME: Petroleum Development Corp.
COUNTY: Lewis DISTRICT: Courthouse
QUADRANGLE: Roanoke 7.5'
SURFACE OWNER: Charles G Yochym
ROYALTY OWNER: Mullooly Heirs
UTM GPS NORTHING: 4316585.514
UTM GPS EASTING: 547566.328 GPS ELEVATION: 1220

The Responsible Party named above has chosen to submit GPS coordinates in lieu of preparing a new well location plat for a plugging permit or assigned API number on the above well. The Office of Oil and Gas will not accept GPS coordinates that do not meet the following requirements:

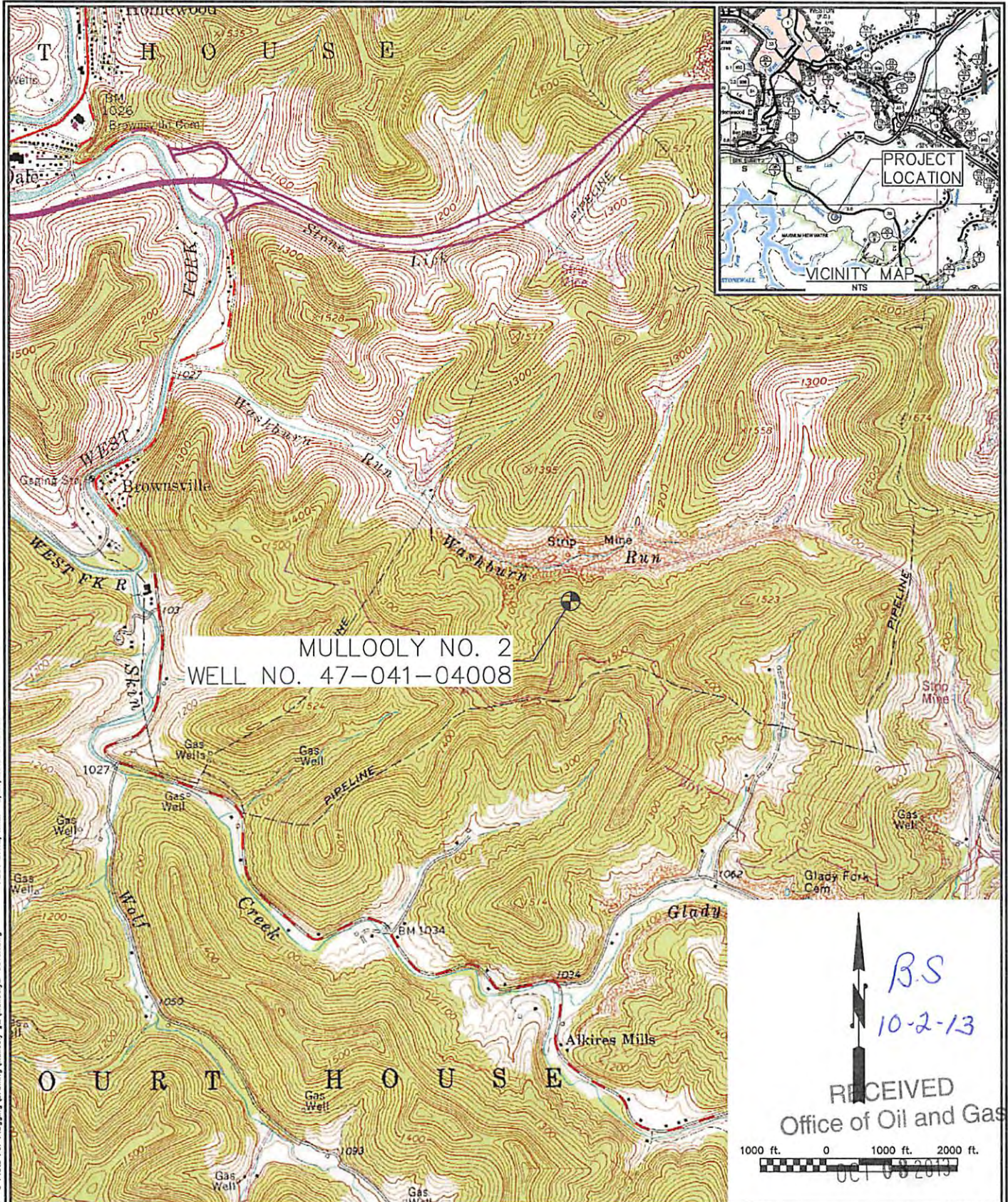
- Datum: NAD 1983, Zone: 17 North, Coordinate Units: meters, Altitude: height above mean sea level (MSL) – meters.
- Accuracy to Datum – 3.05 meters
- Data Collection Method:
Survey grade GPS : Post Processed Differential 0.02M
Real-Time Differential 0.02M
Mapping Grade GPS : Post Processed Differential _____
Real-Time Differential _____

Received
OCT 21 2013
Office of Oil and Gas
WV Dept. of Environmental Protection

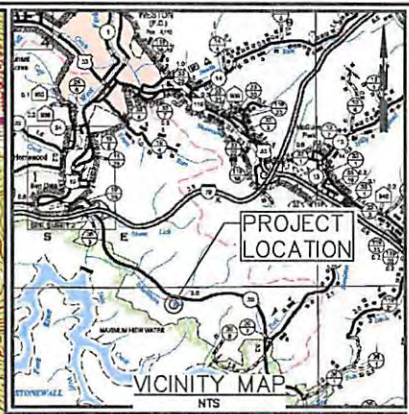
4. Letter size copy of the topography map showing the well location.

I the undersigned, hereby certify this data is correct to the best of my knowledge and belief and shows all the information required by law and the regulations issued and prescribed by the Office of Oil and Gas.

[Signature] _____ Agent _____ 10/21/13 _____
Signature Title Date



MULLOOLY NO. 2
WELL NO. 47-041-04008




B.S
10-2-13

RECEIVED
Office of Oil and Gas

OCT 08 2013

1000 ft. 0 1000 ft. 2000 ft.

CAD FILE: R:\030-2384-PDC-6-Plate For Plugging_Drawing\Mullooly_#2\Mullooly2-Cover.dwg PLOT DATE/TIME: 9/25/2013 9:30 AM

 PDC MOUNTAINEER	<h2 style="margin: 0;">THRASHER</h2> <p style="font-size: small; margin: 0;">THE THRASHER GROUP, INC. 600 WHITE OAKS BOULEVARD - BRIDGEPORT, WV 26330 PHONE: 304-624-4108 FAX: 304-624-7831</p>	<p>PDC MOUNTAINEER, LLC WV Department of Environmental Protection WELL PLUGGING PLAN FOR MULLOOLY NO. 2 LEWIS COUNTY, WV</p>	<p>SHEET NO. 1</p>
THE INFORMATION CONTAINED HEREIN IS THE SOLE PROPERTY OF THE THRASHER GROUP, INC. REPRODUCTION OF THESE DOCUMENTS IN WHOLE OR IN PART, FOR ANY REASON WITHOUT PRIOR WRITTEN PERMISSION, IS STRICTLY PROHIBITED. COPYRIGHT © 2013 THE THRASHER GROUP, INC.		VICINITY MAP - ROANOKE & WESTON, WV 7.5' QUADS	