

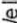

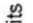




Diversified Gas & Oil Corporation
 100 Diversified Way
 Pikeville KY, 41051

47-041-02211

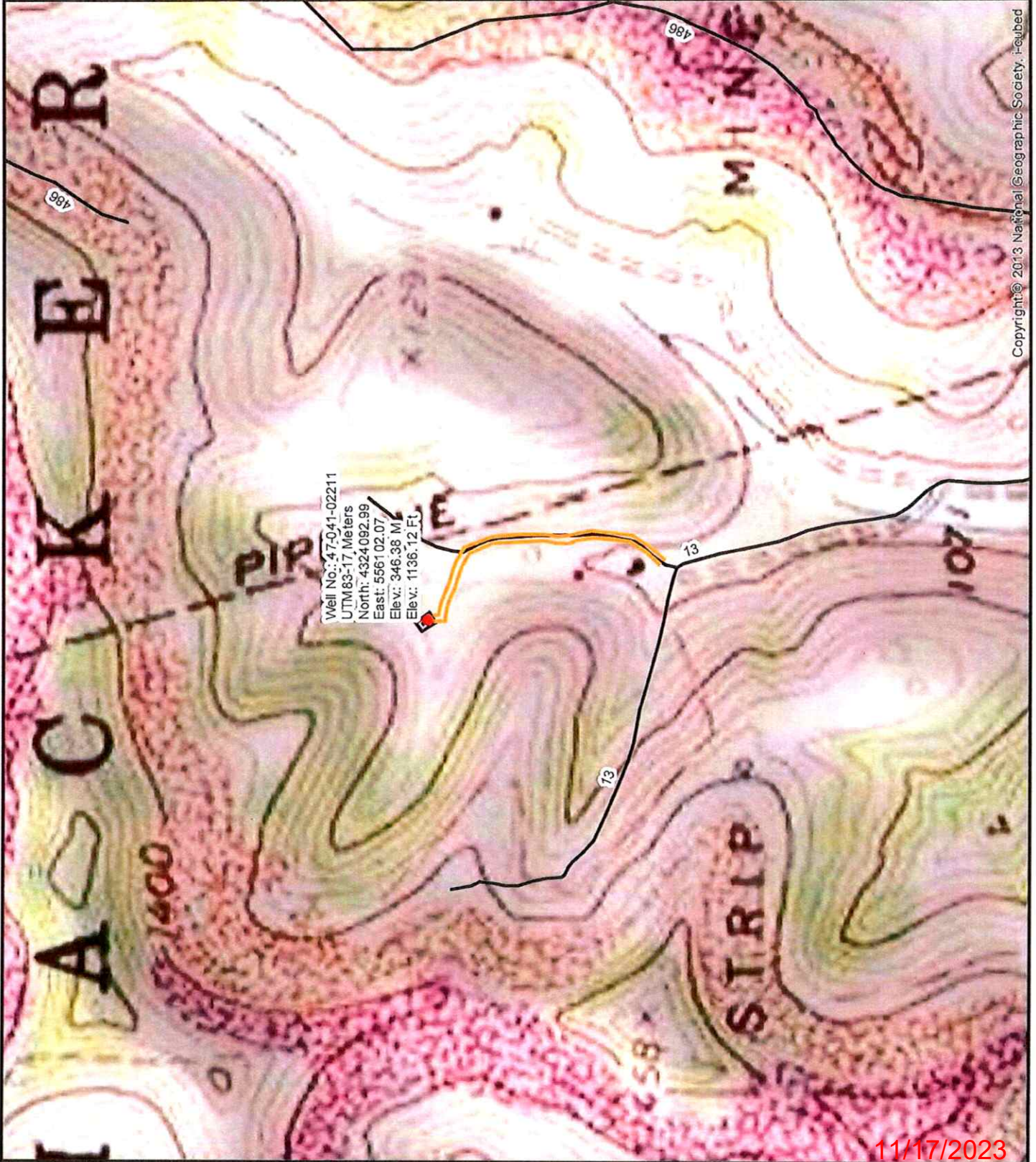
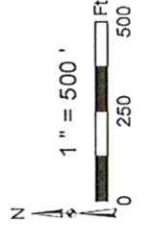
Plugging Map

Legend

-  Well
-  Access Road
-  Pits
-  Pad
-  Public Roads

RECEIVED
 Office of Oil and Gas
 OCT 27 2023

WV Department of
 Environmental Protection



Copyright © 2013 National Geographic Society. i-Quad

11/17/2023








Diversified Gas & Oil Corporation
 100 Diversified Way
 Pikeville KY, 41051

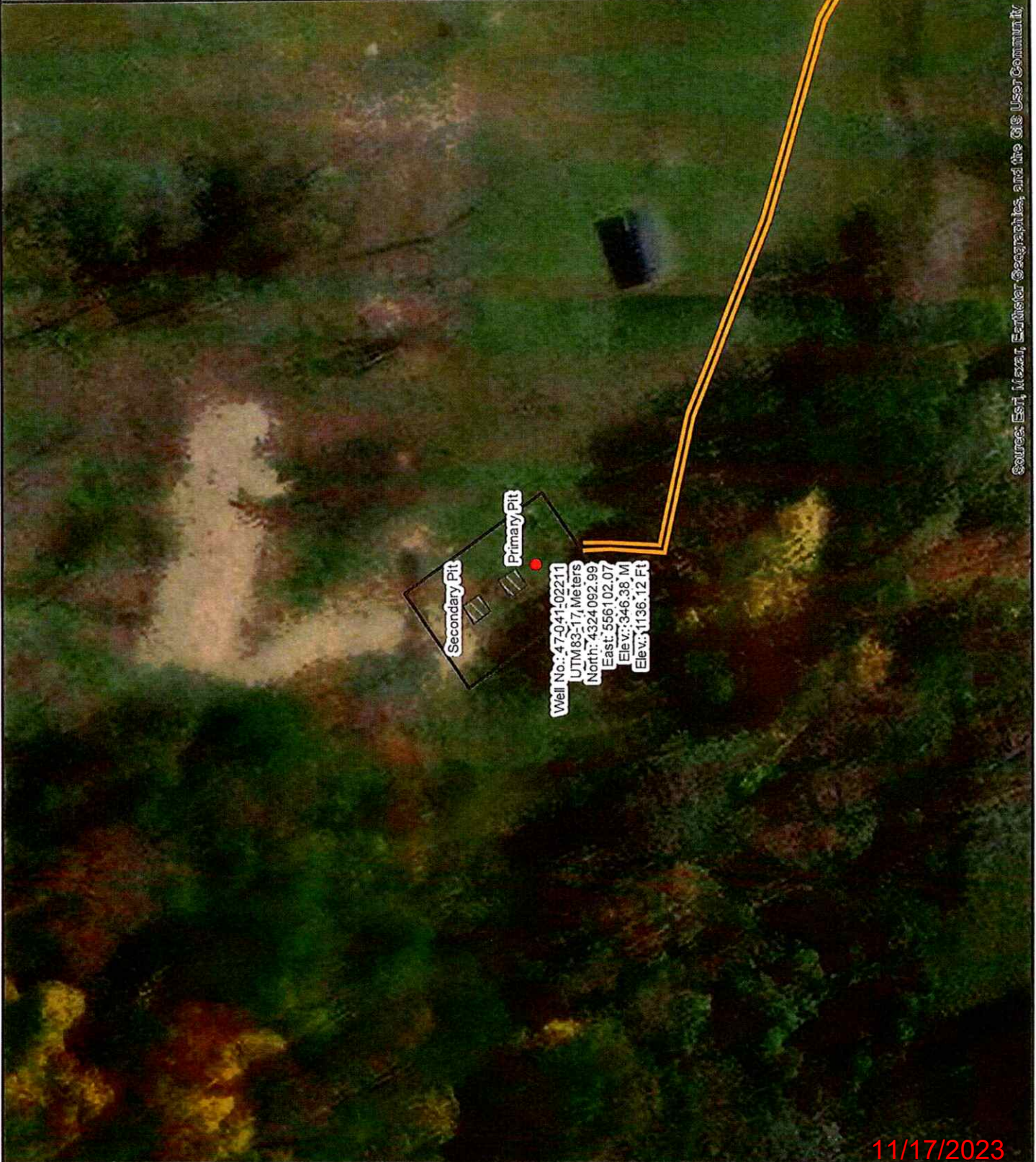
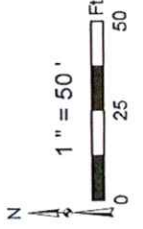
47-041-02211

Plugging Map

Legend

-  Well
-  Access Road
-  Pits
-  Pad
-  Public Roads

RECEIVED
 Office of Oil and Gas
 OCT 27 2023
 WV Department of
 Environmental Protection



Well No.: 47-041-02211
 UTM83-17, Meters
 North: 4324092.99
 East: 556102.07
 Elev.: 346.38 M
 Elev.: 1136.12 Ft

Secondary Pit

Primary Pit

Source: Esri, Maxar, Earthstar Geographics, and the GIS User Community

11/17/2023

WW-7
8-30-06



West Virginia Department of Environmental Protection
Office of Oil and Gas
WELL LOCATION FORM: GPS

API: 4704102211 WELL NO.: Morrison A 102211 CNX
FARM NAME: A.N. Morrison
RESPONSIBLE PARTY NAME: Diversified Production, LLC
COUNTY: Lewis DISTRICT: Hackers Creek
QUADRANGLE: Berlin 7.5'
SURFACE OWNER: Carl M. & Kimberly A. Bosley
ROYALTY OWNER: See Attached
UTM GPS NORTHING: 4324092.99
UTM GPS EASTING: 556102.07 GPS ELEVATION: 1136.12'

The Responsible Party named above has chosen to submit GPS coordinates in lieu of preparing a new well location plat for a plugging permit or assigned API number on the above well. The Office of Oil and Gas will not accept GPS coordinates that do not meet the following requirements:

1. Datum: NAD 1983, Zone: 17 North, Coordinate Units: meters, Altitude: height above mean sea level (MSL) – meters.
2. Accuracy to Datum – 3.05 meters
3. Data Collection Method:

Survey grade GPS : Post Processed Differential
Real-Time Differential

Mapping Grade GPS : Post Processed Differential
Real-Time Differential

4. Letter size copy of the topography map showing the well location.

I the undersigned, hereby certify this data is correct to the best of my knowledge and belief and shows all the information required by law and the regulations issued and prescribed by the Office of Oil and Gas.


Signature

Chris Veazey - Permitting Supervisor
Title

09/15/23
Date

RECEIVED
Office of Oil and Gas

OCT 27 2023

WV Department of
Environmental Protection

11/17/2023