

Latitude

	.81s
	2.09w

Longitude

Topo Location

7.5' Loc. _____ 15' Loc. _____
 _____ (calc.) _____

Company _____

Farm _____

15' Quad _____
(sec.)

7.5' Quad Peterson

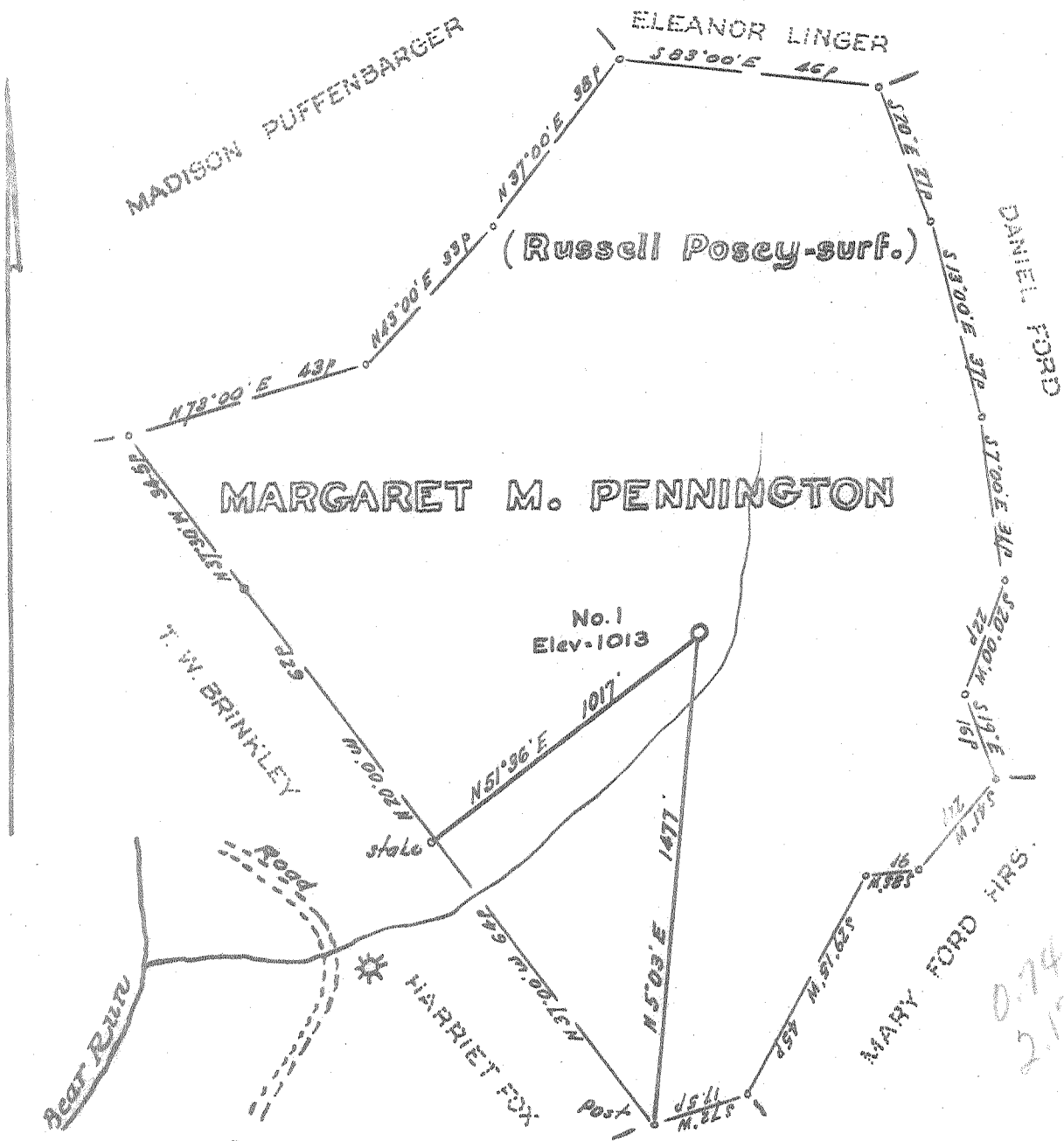
District Collins Settlement

WELL LOCATION PLAT

County 041 Permit 1549

LATITUDE 35° 55'

LONGITUDE 80° 30'



Minimum Error of Closure 1 in 200

Source of Elevation Harriet Fox Well No. 1 = 1013'

I, the undersigned, hereby certify that this map is correct to the best of my knowledge and belief and shows all the information required by paragraph 6 of the rules and regulations of the oil and gas section of the mining laws of West Virginia.

- Fracture.....
- New Location.....
- Drill Deeper.....
- Abandonment.....

Signed: [Signature]
 Squares: N S E W

Map No.

Company BEAR RUN DEVELOPMENT CO.
 Address 5/6 H.G. Hardberger, Agt. 311 S. Spring St. Harrisville, W. Va.
 Farm Margaret M. Pennington
 Tract _____ Acres 103 Lease No. _____
 Well (Farm) No. one "A" Serial No. _____
 Elevation (Spirit Level) 1013
 Quadrangle Burnsville EC
 County Lewis District Collins sett.
 Engineer [Signature]
 Engineer's Registration No. 1227
 File No. 78-A-6 Drawing No. _____
 Date May 19, 1967 Scale 1" = 300' = 495'

STATE OF WEST VIRGINIA
 DEPARTMENT OF MINES
 OIL AND GAS DIVISION
 CHARLESTON

WELL LOCATION MAP

FILE NO. LEW-1549

+ Denotes location of well on United States Topographic Maps, scale 1 to 62,500, latitude and longitude lines being represented by border lines as shown.
 - Denotes one inch spaces on border line of original tracing.

6-6-67 186



STATE OF WEST VIRGINIA
DEPARTMENT OF MINES
OIL AND GAS DIVISION

Rotary
Spudder
Cable Tools
Storage

Quadrangle BURNSVILLE

WELL RECORD

Oil or Gas Well GAS
(KIND)

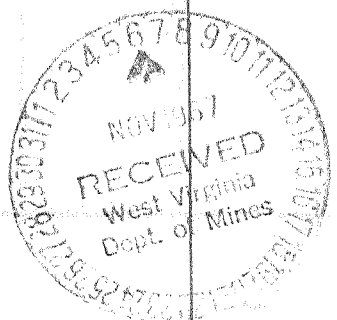
Permit No. LEW-1549

Company Bear Run Development Co. Harrisville, W. Va.
 Address c/o H.G. Hardbarger, 311 So. Spring St.
 Farm R. Posey - M. Pennington Acres 103
 Location (waters) Bear Run
 Well No. 1-A Elev. 1013
 District Collins Settlement County Lewis
 The surface of tract is owned in fee by R. Posey
 Address Elkins, Rte No. 2, W. Va.
 Mineral rights are owned by M. Pennington
Swallow Hill Rd. Address Pittsburgh, Pa.
 Drilling commenced August 23, 1967
 Drilling completed Sept. 23, 1967
 Date Shot From To
 With
 Open Flow /10ths Water in Inch
 /10ths Merc. in Inch
 Volume Cu. Ft.
 Rock Pressure lbs. hrs.
 Oil bbls., 1st 24 hrs.
 WELL ACIDIZED (DETAILS)
 WELL FRACTURED (DETAILS) 910 Bbls wtr., 25,000 lbs 20/40 sd, 15,000 lbs 10/20 sd.,
500 gal. MCA
 RESULT AFTER TREATMENT (Initial open Flow or bbls.) 1,704,000 cu. ft. Gas
 ROCK PRESSURE AFTER TREATMENT 565 lbs after 2 HOURS (Fractured 9/26, tested 10/3/67)
 Fresh Water 1 Bailer/hr. Feet 1520-1555 Salt Water Feet
 Producing Sand Gordon Depth 2304-2335

Casing and Tubing	Used in Drilling	Left in Well	Packers
Size			Kind of Packer
16	16		
13			Size of
10 3/4	445		
8 1/4	1175		Depth set
6			
5 3/16			Perf. top 2324
4 1/2	2377		Perf. bottom 2326
3			Perf. top
2			Perf. bottom
Liners Used			

Attach copy of cementing record.
 CASING CEMENTED 4 1/2 SIZE 2377 No. Ft. Sept. 23, '67 Date
 Amount of cement used (bags) 100
 Name of Service Co. Lawson Cem. Co., Weston
 COAL WAS ENCOUNTERED AT None FEET None INCHES
 FEET None INCHES FEET None INCHES
 FEET None INCHES FEET None INCHES

Formation	Color	Hard or Soft	Top	Bottom	Oil, Gas or Water	Depth	Remarks
Soil			0	15			
Red Rock		s	15	45			
late/Shell		s	45	55			
Red Rock		s	55	80			
Slate	gry	s	80	95			
Red Rock		s	95	145			
Sand	gry	h	145	170			
Red Rock		s	170	200			
Slate	gry	s	200	215			
Lime	gry	h	215	240			
Slate	gry	s	240	300			
Sand	wh.	h	300	320			
Slate	gry	s	320	400			
Slate	red	s	400	436			
Slate	gry	s	436	450			
Slate	red	s	450	460			
Slate	blk	h	460	470			
Shale	gry	s	470	490			
Sand	wh.	h	490	540			
and/Slate	gry	h	540	740			
Sand	gry	h	740	818			
Slate	gry	h	818	840			
Sand	wh.	h	840	945			
Slate	gry	h	945	952			
Sand	wh.	h	952	1025			
Slate	blk	s	1025	1050			
Sand	gry	h	1050	1078			
Slate	blk	s	1078	1088			



Formation	Color	Hard or Soft	Top	Bottom	Oil, Gas or Water	Depth Found	Remarks
Sand	gry	h	1088	1175			
Slate	blk	h	1175	1200			
Sand	gry	h	1200	1345			
Slate	blk	h	1345	1395			
Sand	gry	h	1395	1405			
Shale	blk	s	1405	1420			
Sand	gry	h	1420	1455			
Slate	blk	h	1455	1520			
Sand	wh.	s	1520	1555	wtr.		1 bailer/hr.
Slate	blk	s	1555	1575			
Shale	red	s	1575	1680			
Sand	gry	h	1680	1690			
Slate	gry	s	1690	1730			
L.Lime	gry	h	1730	1760			
P.Cave	gry	s	1760	1768			
B.Lime	gry	h	1768	1845			
Keener	tan	h	1845	1870			
B.Injun	tan	h	1870	1935			
Shale Sdy.	gry	h	1935	2139			
Sand Sh.	gry	h	2139	2156			
Shale (Sdy)	gry	h	2156	2294			
Gordon Sd.	wh-tan	h	2295	2310			
Gordon Sd.	wh-tan	s	2310	2318	Gas		
Sand	tan	h	2318	2325			
Shale Sdy.	gry	h	2325	2375			
Shale	gry	s	2375	2450			
Shale Sdy Stk	gry	h	2450	2495			

Date October 30, 1967.

APPROVED Bear Run Dev. Co., Owner

By H.G. Hardbarger
(Title)

H.G. Hardbarger, Agent.