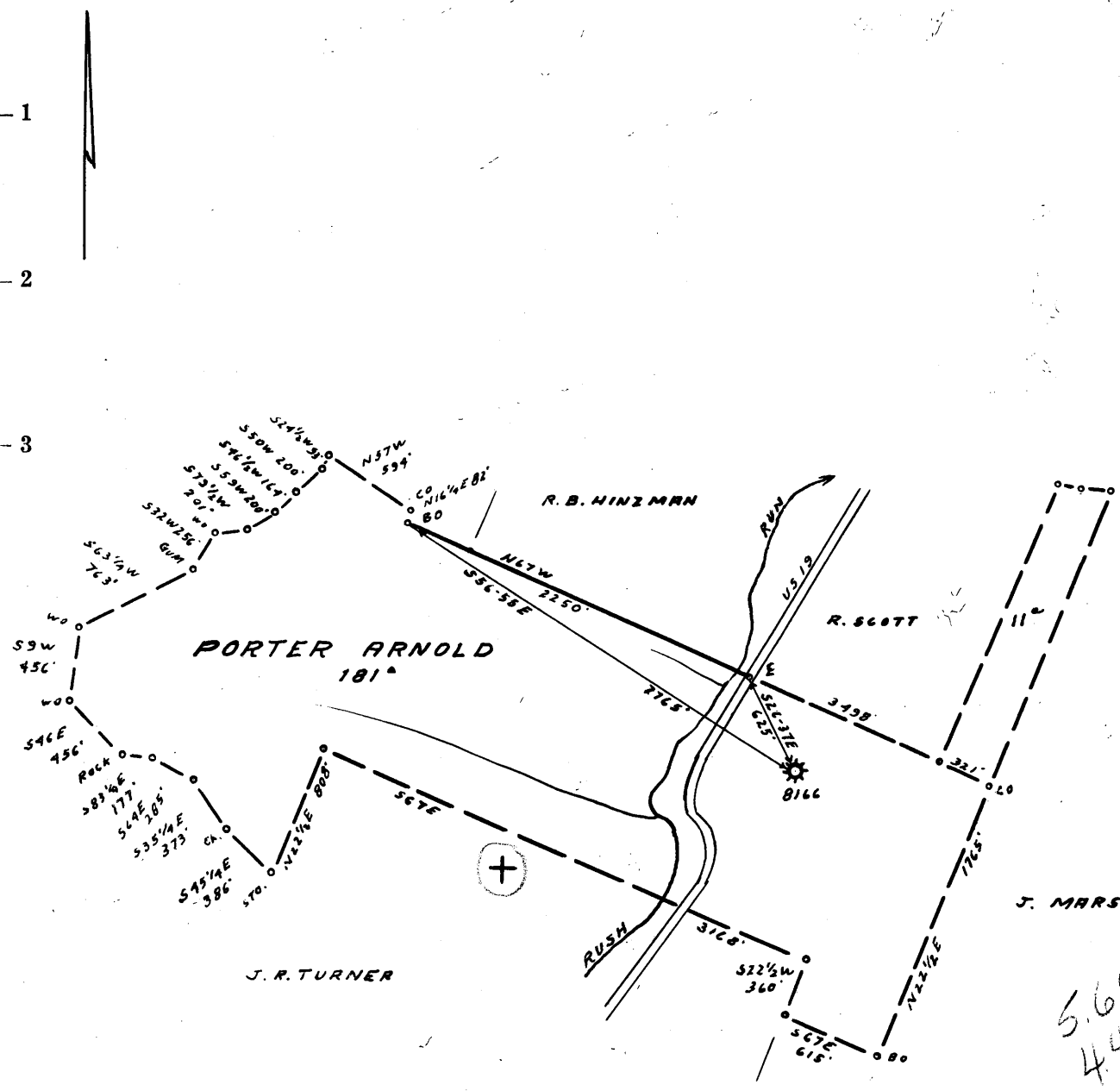


Latitude 39 ° 05'

Longitude 80 ° 25'



5.61 S
4.45 W

- Redrill.... RECONDITION
- New Location.
- Drill Deeper.....
- Abandonment.....

PARTIAL PLUG

Company EQUITABLE GAS CO. WVA. DIV.
 Address CLARKSBURG, W. VA.
 Farm PORTER ARNOLD
 Tract _____ Acres 209 Lease No. 25175
 Well (Farm) No. 1 Serial No. (8166)
 Elevation (Spirit Level) 1166' VA.
 Quadrangle WESTON - SW 34
 County LEWIS District COURTHOUSE
 Engineer James D. Ruffin
 Engineer's Registration No. 1084
 File No. 201/66 Drawing No. _____
 Date 7-13-62 Scale 1" = 1000'

STATE OF WEST VIRGINIA
 DEPARTMENT OF MINES
 OIL AND GAS DIVISION
 CHARLESTON

WELL LOCATION MAP
 FILE NO. LEW-1095

+ Denotes location of well on United States Topographic Maps, scale 1 to 62,500, latitude and longitude lines being represented by border lines as shown.

— Denotes one inch spaces on border line of original tracing.

RDMC

9-0-186



STATE OF WEST VIRGINIA
DEPARTMENT OF MINES
OIL AND GAS DIVISION

Quadrangle Weston SW 3.3

Permit No. ~~LEW759PP~~ LEW-1095

WELL RECORD
PARTIAL PLUG AND RECONDITION

Oil or Gas Well Gas Storage
(KIND)

Company Equitable Gas Company
Address 420 Blvd. of Allies, Pittsburgh 19, Pa.
Farm P. Arnold Acres 204
Location (waters) Weston SW 3.3
Well No. 8166 Elev. 1,166
District Courthouse County Lewis
The surface of tract is owned in fee by R. F. and J. R. Turner, Route 2, Weston, West Virginia
Mineral rights are owned by G. Hammer, Agent, 216 3rd. St., Weston, W. Va. - G. Koelln, Galahad Rd., Hudson, Wisc.
Repair Drilling commenced 5-29-62
Repair Drilling completed 9-4-62
Date Shot -- From -- To --
With --
Open Flow -- /10ths Water in -- Inch
-- /10ths Merc. in -- Inch
Volume -- Cu. Ft.
Rock Pressure -- lbs. -- hrs.
Oil -- bbls., 1st 24 hrs.
WELL ACIDIZED --
WELL FRACTURED --

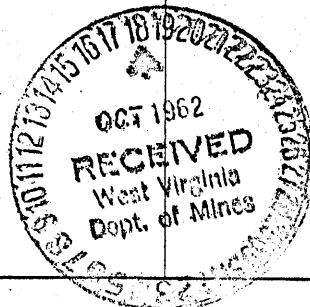
Casing and Tubing	Used in Drilling	Left in Well	Packers
Size			Kind of Packer
16			Anchor
13			Size of <u>6-5/8" x 3'</u>
10	187	None	Depth set <u>2,319</u>
8 3/4	972	None	
6 3/4	1972	1972	
5 3/16			Perf. top
3	2375	2375	Perf. bottom
2			Perf. top
Liners Used			Perf. bottom

CASING CEMENTED -- SIZE -- No. Ft. -- Date --
Aquagel around 3" from 2,319 to surface.
COAL WAS ENCOUNTERED AT -- FEET -- INCHES
-- FEET -- INCHES -- FEET -- INCHES
-- FEET -- INCHES -- FEET -- INCHES

RESULT AFTER TREATMENT --
ROCK PRESSURE AFTER TREATMENT --
Fresh Water -- Feet -- Salt Water -- Feet --

Formation	Color	Hard or Soft	Top	Bottom	Oil, Gas or Water	Depth	Remarks
L. Dunkard Sand			503	515			
B. Dunkard Sand			713	727			
Salt Sand			947	983			
Salt Sand			1022	1072			
Salt Sand			1155	1192			
Salt Sand			1197	1215			
Salt Sand			1383	1540			
Salt Sand			1625	1653			
Maxton Sand			1821	1859			
Little Lime			1869	1893			
Big Lime			1902	1966			
Big Injun Sand			1971	2009			
Big Injun Sand			2017	2088			
Gantz Sand			2320	2374	Gas	2350	Temp. Survey
Fifty Foot Sand			2442	2461	Gas	2456-60	Temp. Survey
Cleaned Out to				2519			
Cemented Back			2519	2375			
Completed Total Depth				2375			

NOTE: Log shown from Gamma Ray Survey except where noted.
Located in Rhodes Gas Storage Pool Area.



(over)

525/350/175