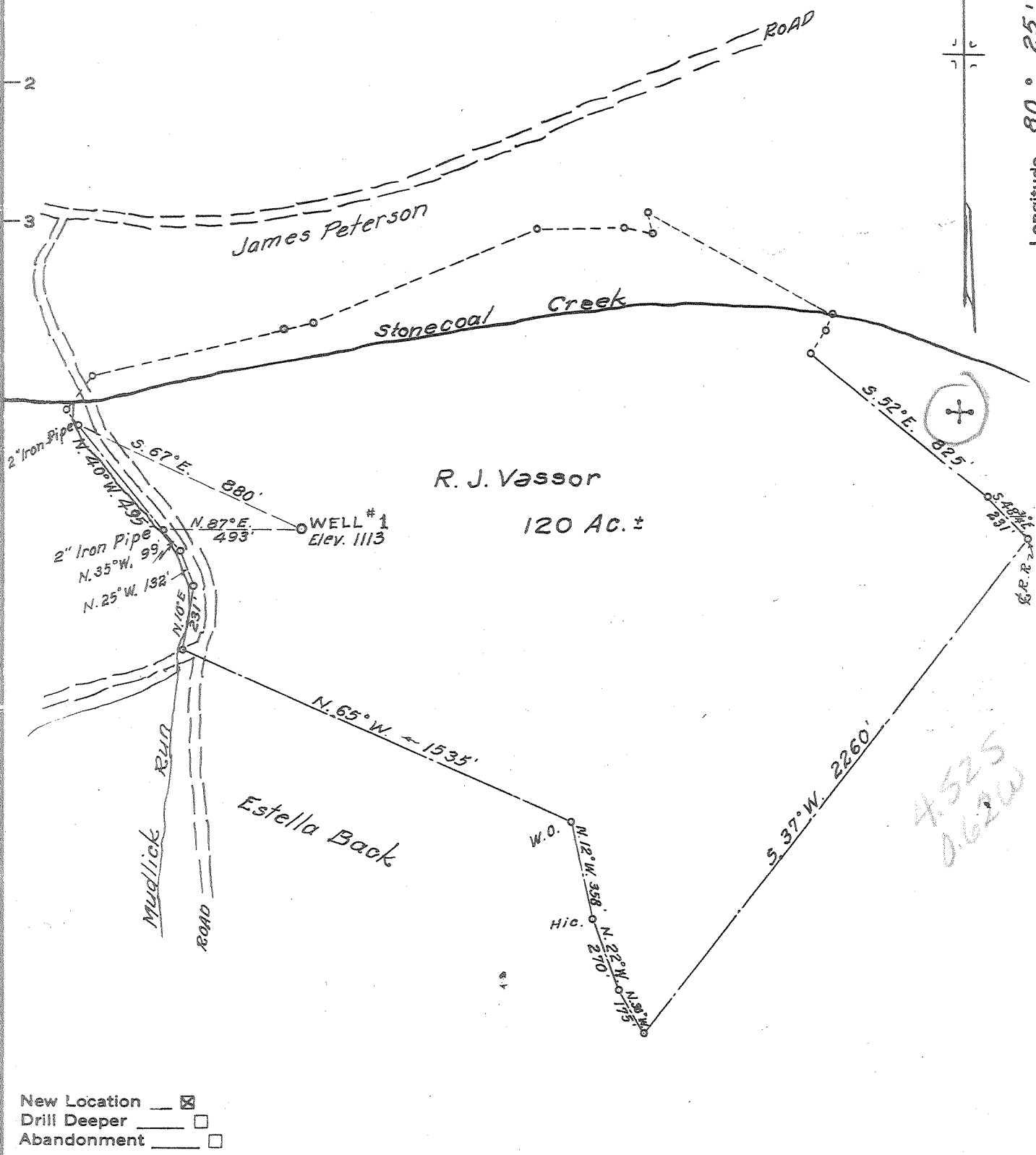


Latitude 39° 05'

Longitude 80° 25'



- New Location
- Drill Deeper
- Abandonment

Company Bear Run Oil & Gas Co
 Address P.O. Box 925, Clarksburg, W Va
 Farm R. J. Vassor
 Tract 1 Acres 120± Lease No. _____
 Well (Farm) No. 1 Serial No. _____
 Elevation (Spirit Level) 1113
 Quadrangle Weston SW
 County Lewis District Hackers Creek
 Engineer Parker & Peters
 Engineer's Registration No. 485
 File No. _____ Drawing No. _____
 Date Sept. 14, 1962 Scale 1" = 500'

STATE OF WEST VIRGINIA
 DEPARTMENT OF MINES
 OIL AND GAS DIVISION
 CHARLESTON

WELL LOCATION MAP
 FILE NO. Lew-1087

+ Denotes location of well on United States Topographic Maps, scale 1 to 62,500, latitude and longitude lines being represented by border lines as shown.

— Denotes one inch spaces on border line of original tracing.

6-6 153



STATE OF WEST VIRGINIA
DEPARTMENT OF MINES
OIL AND GAS DIVISION 17

Quadrangle Weston

Permit No. LEW-1087

WELL RECORD

Oil or Gas Well Gas
(KIND)

Company Bear Run Oil & Gas Company
Address Schroath Building, Clarksburg, W. Va.
Farm R. J. Vassar Acres 96

Location (waters) Mudlick Run
Well No. Vassar #1 Elev. 1113 ft.
District Hackers Creek County Lewis

The surface of tract is owned in fee by _____
Address _____

Mineral rights are owned by _____
Address _____

Drilling commenced November 12, 1962

Drilling completed January 8, 1963

Date Shot _____ From _____ To _____

With _____

Open Flow 50/10ths Water in 2 Inch
/10ths Merc. in _____ Inch

Volume 300,000 Cu. Ft.

Rock Pressure 525 lbs. 24 hrs.

Oil _____ bbls., 1st 24 hrs.

WELL ACIDIZED _____

WELL FRACTURED not fractured

| Casing and Tubing | Used in Drilling | Left in Well | Packers |
|-------------------|------------------|--------------|----------------|
| Size | | | Kind of Packer |
| 16 | | | |
| 13 | | | |
| 10 10 in. | 292 | none | Size of |
| 8 8 | 964 | none | |
| 7 in | 1723 | 1723' | Depth set |
| 5 3/16 | | | |
| 3 | | | Perf. top |
| 2 | | | Perf. bottom |
| Liners Used | | | Perf. top |
| | | | Perf. bottom |

CASING CEMENTED _____ SIZE _____ No. Ft. _____ Date _____
not cemented

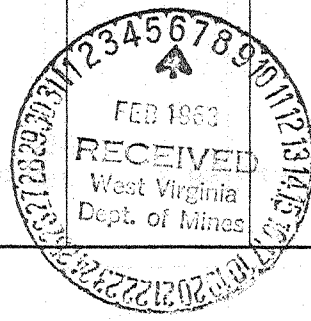
COAL WAS ENCOUNTERED AT _____ FEET _____ INCHES
_____ FEET _____ INCHES _____ FEET _____ INCHES
_____ FEET _____ INCHES _____ FEET _____ INCHES

RESULT AFTER TREATMENT _____

ROCK PRESSURE AFTER TREATMENT - ~~XXXXXXXX~~

Fresh Water 890' - 920' Feet Salt Water 1355' Feet

| Formation | Color | Hard or Soft | Top | Bottom | Oil, Gas or Water | Depth | Remarks |
|------------------|-------|--------------|-----|--------|-------------------|-------|---------|
| Clay | | | 0 | 8 | | | |
| Slate | | | 8 | 16 | | | |
| Sand | | | 16 | 21 | | | |
| Slate Shells | | | 21 | 135 | | | |
| Sand | | | 135 | 155 | | | |
| Red Rock | | | 155 | 170 | | | |
| Red Rock Slate | | | 170 | 225 | | | |
| Lime | | | 225 | 240 | | | |
| Slate | | | 240 | 245 | | | |
| Red Rock & Slate | | | 245 | 290 | | | |
| Lime | | | 290 | 300 | | | |
| Red Rock | | | 300 | 315 | | | |
| Slate | | | 315 | 355 | | | |
| Red Rock | | | 355 | 365 | | | |
| Slate & Shells | | | 365 | 380 | | | |
| Red Rock | | | 380 | 386 | | | |
| Slate & Shells | | | 386 | 445 | | | |
| Red Rock | | | 445 | 470 | | | |
| Slate & Shells | | | 470 | 600 | | | |
| Sand | | | 600 | 680 | | | |
| Slate Black | | | 680 | 690 | | | |
| Lime Shells | | | 690 | 807 | | | |
| Sand | | | 807 | 817 | | | |
| Slate Shells | | | 817 | 830 | | | |
| Gritty Lime | | | 830 | 845 | | | |



| Formation | Color | Hard or Soft | Top // | Bottom | Oil, Gas or Water | Depth Found | Remarks |
|-------------------|-------|--------------|--------|--------|-------------------|-------------|-------------------|
| Slate | | | 845 | 850 | | | |
| Hard Sand | | | 850 | 942 | Water | 890 | 2 Bailers hours |
| Black Slate | | | 942 | 947 | " | 920 | 1 " |
| Sand | | | 947 | 995 | | | |
| Black Slate | | | 995 | 1003 | | | |
| Sand | | | 1003 | 1060 | | | |
| Slate | | | 1060 | 1087 | | | |
| Shells | | | 1087 | 1145 | | | |
| Black Slate | | | 1145 | 1170 | | | |
| Sand | | | 1170 | 1205 | | | |
| Black Slate | | | 1205 | 1225 | | | |
| Lime | | | 1225 | 1245 | | | |
| Sand | | | 1245 | 1370 | Water | 1355 | 1/2 Bailers hrs. |
| Black Slate | | | 1370 | 1375 | | | |
| Sand | | | 1375 | 1390 | | | |
| Red Rock | | | 1390 | 1400 | | | |
| Slate | | | 1400 | 1410 | | | |
| Pink Rock | | | 1410 | 1435 | | | |
| Lime Shells | | | 1435 | 1450 | | | |
| Sand | | | 1450 | 1470 | | | |
| Red Rock | | | 1470 | 1480 | | | |
| Lime | | | 1480 | 1487 | | | |
| Sand | | | 1487 | 1515 | | | |
| Red Rock & Shells | | | 1515 | 1558 | | | |
| Sand | | | 1558 | 1570 | | | |
| Red Rock | | | 1570 | 1580 | | | |
| White Slate | | | 1580 | 1590 | | | |
| Red Rock | | | 1590 | 1612 | | | |
| Sand | | | 1612 | 1625 | | | |
| Red Rock | | | 1625 | 1627 | | | |
| Sand | | | 1627 | 1633 | | | |
| Slate | | | 1633 | 1646 | | | |
| Lime Little | | | 1646 | 1670 | | | |
| Sand B. M. | | | 1670 | 1698 | | | |
| Slate | | | 1698 | 1703 | | | |
| Big Lime | | | 1703 | 1760 | Bubble gas | 1740 | |
| Injun Sand | | | 1760 | 1885 | " " | 1760 | |
| Slate | | | 1885 | 1895 | " " | 2005 | |
| Sand | | | 1895 | 1940 | " " | 2015 | |
| Slate | | | 1940 | 1990 | | | |
| Sand | | | 1990 | 2035 | 40/10 W. | Through 2" | Of Water |
| Slate | | | 2035 | 2090 | | | |
| Sand | | | 2090 | 2115 | | | |
| Slate | | | 2115 | 2165 | | | |
| Lime | | | 2165 | 2185 | | | |
| Slate | | | 2185 | 2230 | | | |
| Hard Lime | | | 2230 | 2250 | | | |
| Red Rock | | | 2250 | 2265 | | | |
| Red Sand | | | 2265 | 2330 | | | |
| Slate | | | 2330 | 2345 | | | |
| Sand | | | 2345 | 2365 | | | |
| Slate | | | 2365 | 2368 | | | |
| Sand | | | 2368 | 2415 | 2530 | 50/10 W. | Through 2" O F W. |
| Slate Shells | | | 2415 | 2505 | | | |
| Sand | | | 2505 | 2510 | | | |
| Slate Shells | | | 2510 | 2594 | | | |
| Sand | | | 2594 | 2617 | | | |
| Slate Shells | | | 2617 | 2642 | Total Depth | | |

Date February 5, 1963

APPROVED BRAR RUN OIL & GAS COMPANY, Owner

By _____ (Title)
President