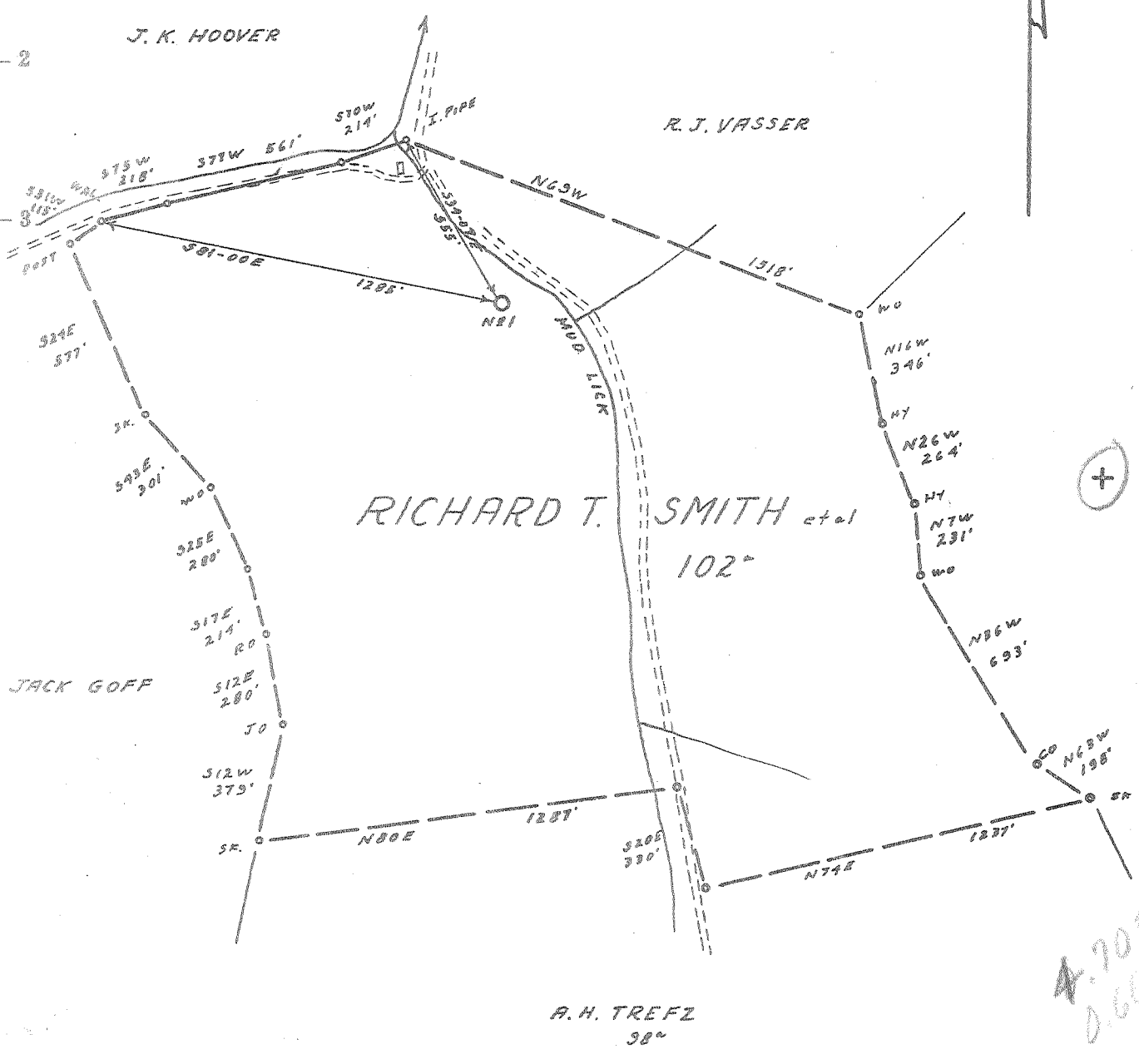


Latitude 39° 05'

Longitude 80° 25'



4.705
0.66W

- Redrill.....
- New Location.
- Drill Deeper.....
- Abandonment.....

Company BEAR RUN OIL & GAS CO.
 Address BOX 325 CLARKSBURG, W.VA.
 Farm RICHARD T. SMITH et al
 Tract _____ Acres 102 Lease No. _____
 Well (Farm) No. 1 Serial No. _____
 Elevation (Spirit Level) 1020' VA.
 Quadrangle WESTON SW 4² SW
 County LEWIS District HACKERS CK.
 Engineer James D. Jeffries
 Engineer's Registration No. 4084
 File No. 202 1120 Drawing No. _____
 Date 8-12-61 Scale 1" = 500'

STATE OF WEST VIRGINIA
 DEPARTMENT OF MINES
 OIL AND GAS DIVISION
 CHARLESTON

WELL LOCATION MAP
 FILE NO. lew-841

+ Denotes location of well on United States Topographic Maps, scale 1 to 62,500, latitude and longitude lines being represented by border lines as shown.

— Denotes one inch spaces on border line of original tracing.

RDM



STATE OF WEST VIRGINIA
DEPARTMENT OF MINES
OIL AND GAS DIVISION 10

Quadrangle Weston

Permit No. LEW 841

WELL RECORD

Oil or Gas Well O & G
(KIND)

Company Bear Run Oil & Gas Co.
Address P. O. Box 925- Clarksgurg, W. Va.
Farm Richard T. Smith Acres 98
Location (waters) Mud Lick
Well No. 1 Elev. 1020
District Hackers Creek County Lewis
The surface of tract is owned in fee by Richard T. Smith
Address Weston, W. Va.
Mineral rights are owned by Richard T. Smith & etl
Address Weston, W. Va.
Drilling commenced August 19, 1961
Drilling completed September 26, 1961
Date Shot _____ From _____ To _____
With _____
Open Flow 10/10ths Water in _____ 2 Inch
_____/10ths Merc. in _____ Inch
Volume _____ Cu. Ft.
Rock Pressure 560 lbs. lbs. _____ hrs.
Oil _____ 5 bbls., 1st 24 hrs.
WELL ACIDIZED _____

Casing and Tubing	Used in Drilling	Left in Well	Packers
Size			Kind of Packer _____
16			
18			
10	<u>261</u>		Size of _____
8 1/4	<u>896</u>		
6 1/2	<u>1782</u>	<u>1742</u>	Depth set _____
5 1/2	<u>1840</u>	<u>1840</u>	
3			Perf. top _____
2			Perf. bottom _____
Liners Used			Perf. top _____
			Perf. bottom _____

CASING CEMENTED 4 1/2 SIZE _____ No. Ft. _____ Date _____
90 sks cement Garaton

COAL WAS ENCOUNTERED AT _____ FEET _____ INCHES
_____ FEET _____ INCHES FEET _____ INCHES
_____ FEET _____ INCHES FEET _____ INCHES

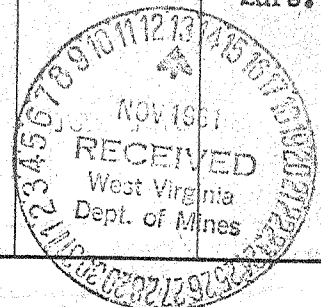
WELL FRACTURED yes 4 Allision-1000 bbrls water 4000 acid 70,000 lbs sand

RESULT AFTER TREATMENT one million and half cubic ft. gas

ROCK PRESSURE AFTER TREATMENT 600 lbs - 24 hours

Fresh Water _____ Feet Salt Water _____ Feet

Formation	Color	Hard or Soft	Top	Bottom	Oil, Gas or Water	Depth	Remarks
clay			0	5	water	5 feet	
gravel			5	15			
slate			15	25			
sand			25	35			
rock	red		35	40			
slate	shell		40	55			
rock	red		55	165	373		water hole full 50ft.
slate	shell		165	225			
rock	red		225	260	260		
slate	shell		260	310			
rock	red		300	368	141		
slate	shell		368	393			
slate	black		393	395			
slate	shell		395	475			
sand			475	555	show gas	495 ft.	enough water to drill with
slate	shell		555	620			
slate & lime			620	722			
slate	black		722	745			
sand			745	810	water	795 ft.	10 bailers in 2hrs.
slate	black		810	820			
sand			820	830			
slate			830	835			
sand			835	880			
slate	black		880	895			
sand			895	920			
slate	black		920	940			
slate	shell		940	1025			



Formation	Color	Hard or Soft	Top /	Bottom	Oil, Gas or Water	Depth Found	Remarks
sand		hard	1025	1075			
slate shell	white		1075	1095			
sand			1095	1247		water	1240 1247
slate shell			1247	1265			
rock	red		1265	1300			
slate shells			1300	1325			
rock	red		1325	1350			
lime			1350	1392			
rock	red		1392	1479			
slate shell			1479	1495			
sand			1495	1520			
slate			1520	1525			
little lime			1525	1530			
sand			1550	1568		show gas	1556 1565
slate white			1568	1575			
big lime			1575	1628			
keener			1628	1650			
injūn			1650	1740		show oil	1650 1654 1660 1665
slate			1740	1750			
Pessum sand			1750	1800			
slate lime			1800	1875			
sand			1875	1903			
slate shells			1903	1955			
sand			1955	1986			
lime			1986	2000			
slate shells			2000	2035			
sand			2035	2063		show gas	2053 2063
slate shell			2063	2080			
rock	fred		2080	2085			
sand			2085	2120			
slate shell			2120	2142			
lime		2142	2160				
limem	red	2160	2190				
slate shells		2190	2205				
sand		2205	2230		nshow oil	2223	
slate		2230	2255				
sand		2255	2282				
lime		2282	2290				
sand		2290	2316;				
slate shells		2316	2381				
sand		2381	2391				
slate		2391					

Date Nov 10 1961
APPROVED Thomas A Lamb Owner
By President
(Title)