

WW-7
8-30-06



West Virginia Department of Environmental Protection
Office of Oil and Gas
WELL LOCATION FORM: GPS

API: 47-041-00276-R WELL NO.: 608164

FARM NAME: Will E. Morris ET AL

RESPONSIBLE PARTY NAME: Equitrans, L.P.

COUNTY: Lewis DISTRICT: Collins Settlement

QUADRANGLE: Crawford N/W 1.3

SURFACE OWNER: US Army Corps of Engineers

ROYALTY OWNER: US Bureau of Land Management

UTM GPS NORTHING: 4311531.933

UTM GPS EASTING: 544433.732 GPS ELEVATION: 363.6264m(1193')

The Responsible Party named above has chosen to submit GPS coordinates in lieu of preparing a new well location plat for a plugging permit or assigned API number on the above well. The Office of Oil and Gas will not accept GPS coordinates that do not meet the following requirements:

1. Datum: NAD 1983, Zone: 17 North, Coordinate Units: meters, Altitude: height above mean sea level (MSL) – meters.
2. Accuracy to Datum – 3.05 meters
3. Data Collection Method:

Survey grade GPS : Post Processed Differential

Real-Time Differential

Mapping Grade GPS : Post Processed Differential

Real-Time Differential

4. **Letter size copy of the topography map showing the well location.**

I the undersigned, hereby certify this data is correct to the best of my knowledge and belief and shows all the information required by law and the regulations issued and prescribed by the Office of Oil and Gas.

[Signature]
Signature

Attorney in fact
Title

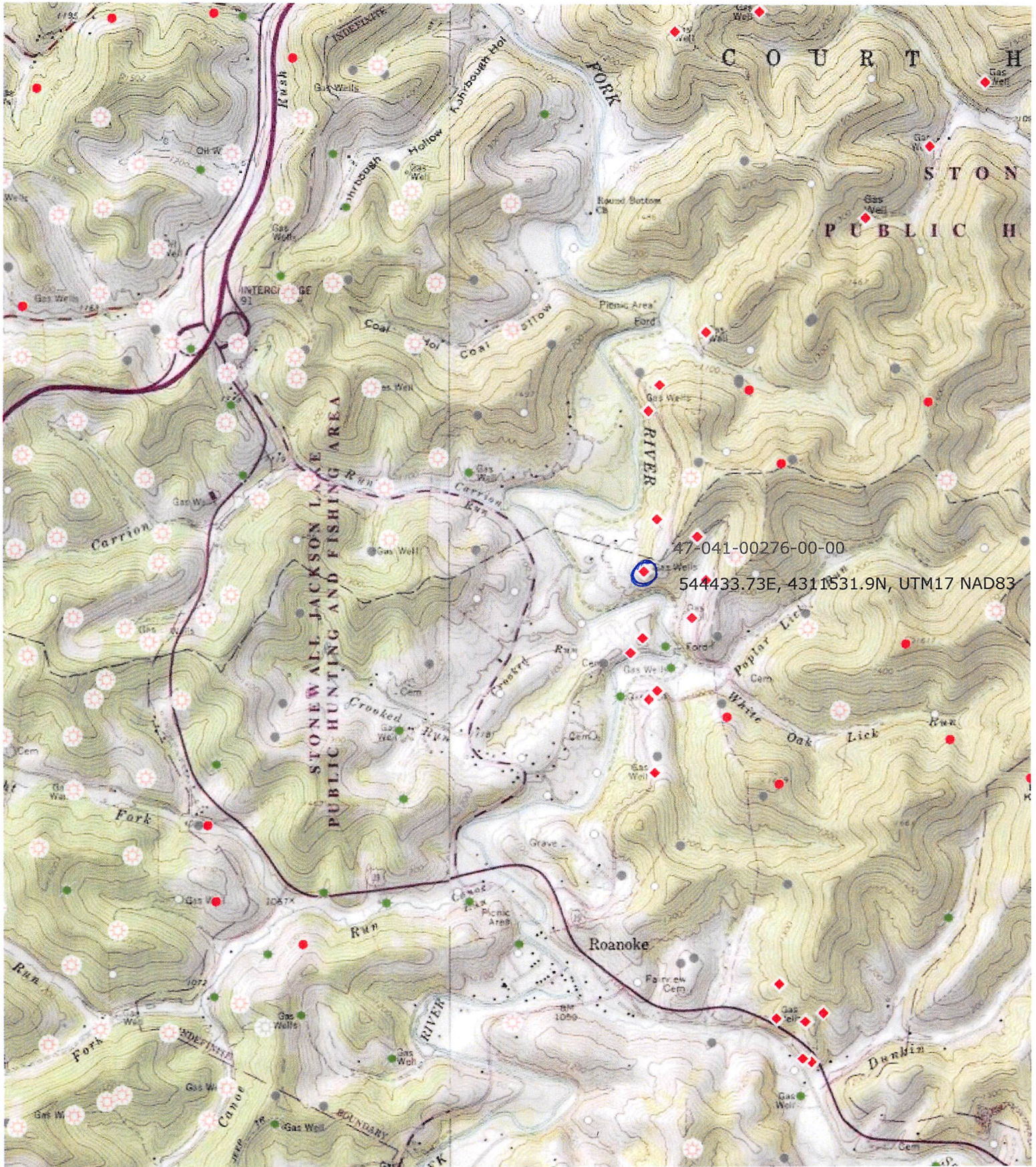
4-16-19
Date

RECEIVED
Office of Oil and Gas

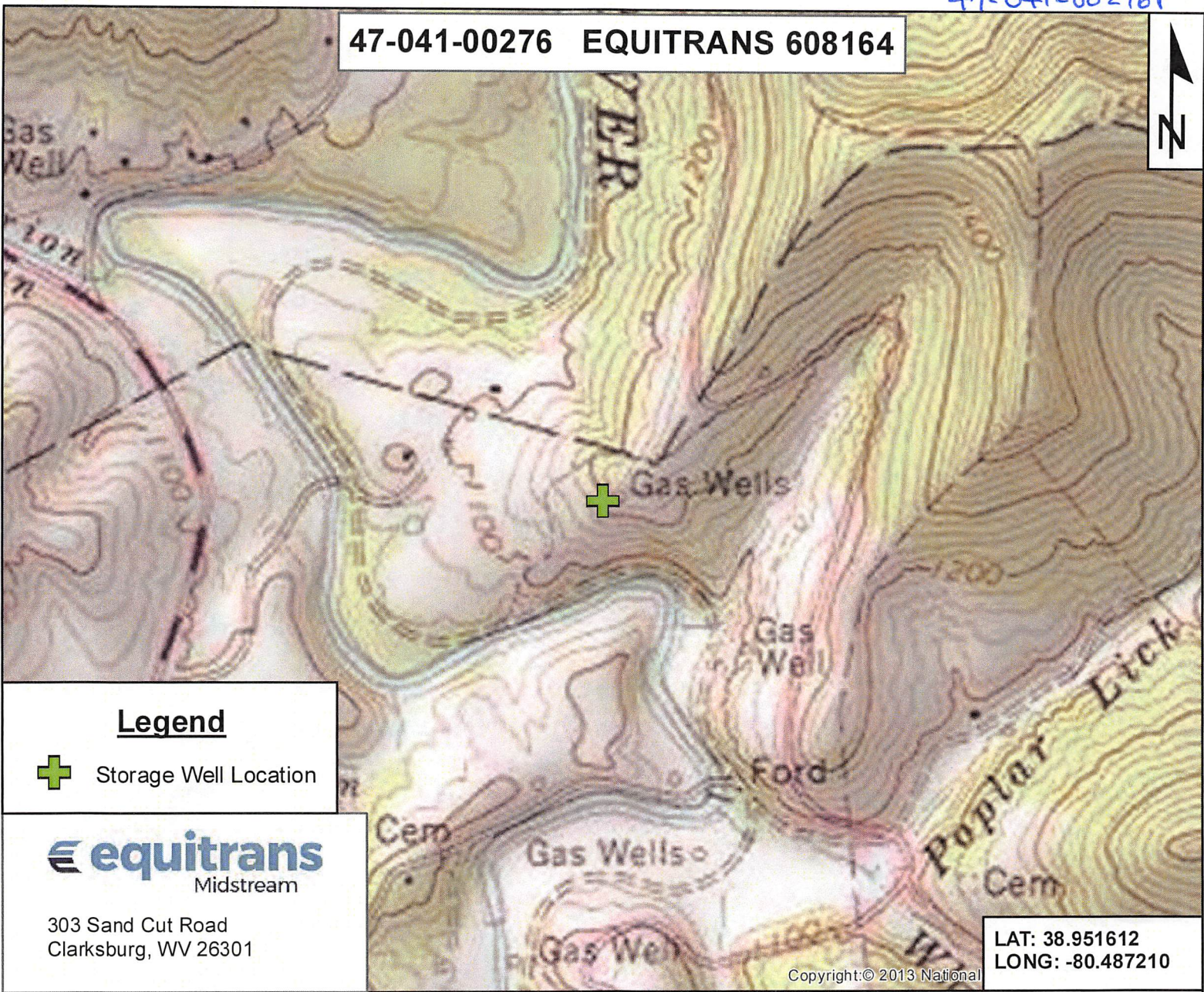
MAY 2 2019

WV Department of
Environmental Protection

47-041-00276 P



47-041-00276 EQUITRANS 608164



Legend

 Storage Well Location



303 Sand Cut Road
Clarksburg, WV 26301

LAT: 38.951612
LONG: -80.487210

DISCLAIMER:
This map is confidential and is to be used only for the express informational purposes for which it was created. Unauthorized use, copying, or dissemination is strictly prohibited. Equitrans Midstream does not warrant the accuracy of the location of any items shown on this map, including, but not limited to, any structures, well or pipeline facilities, property boundaries, topography, roadways, or waterways. The items shown on the map may not have been placed on the map using survey lines or GPS coordinates. The specific location of any of the map items should be determined by a field survey performed by a licensed surveyor upon consultation with Equitrans Midstream.

Quad: Crawford N.W. 1.3

Scale: Not Mapped to Scale
Office of Oil and Gas

County: Lewis

Date: 3/25/2019 MAY 2 2019

District: Collins Settlement

WV Department of
Environmental Protection
API: 47-041-00276