

Issued
11-24-69
Redrill 8-25-69
New Location
Drill Deeper
Abandonment

7.5 loc
2.655 38°55'
1.56W 80°25'

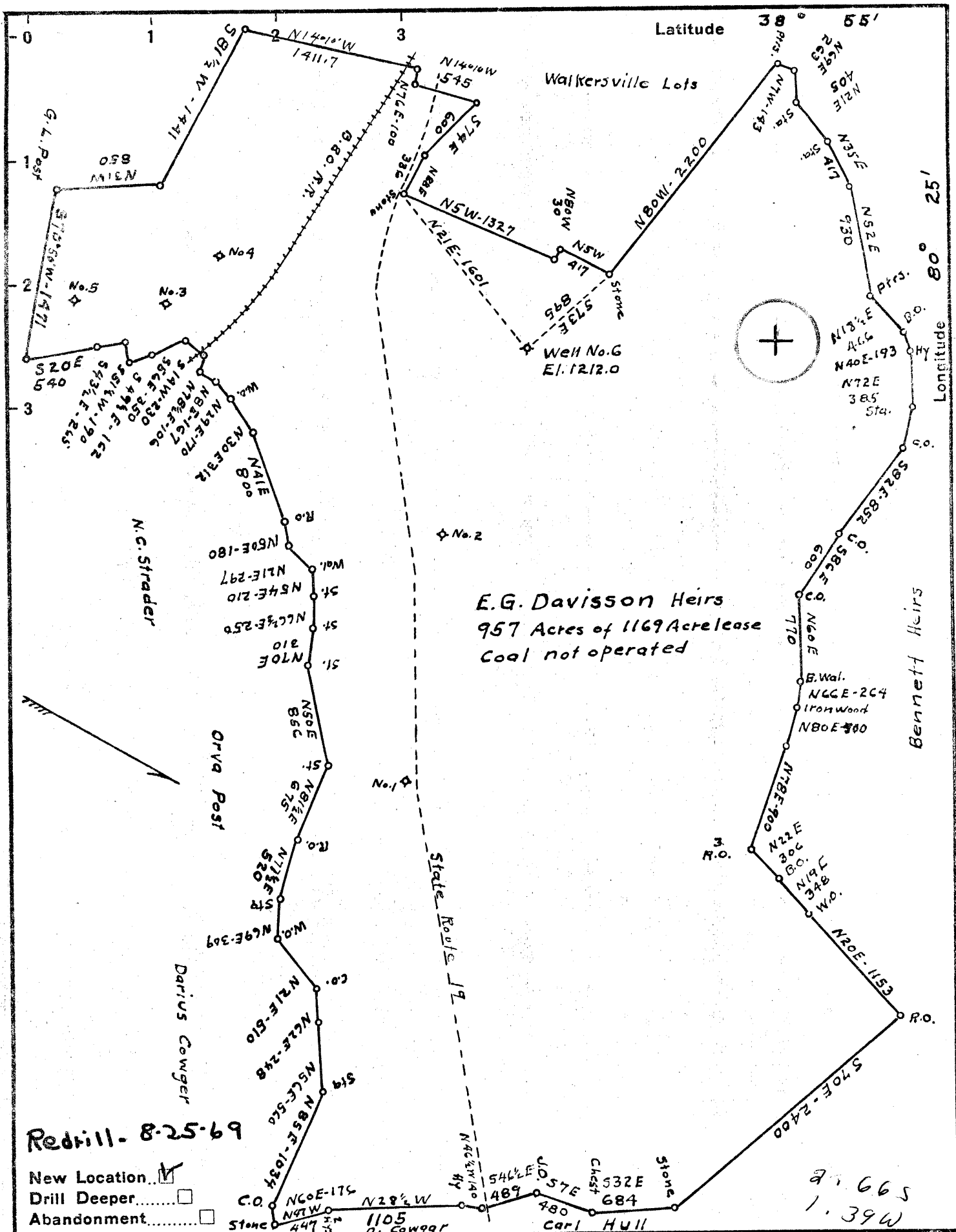
calc 15' loc
2.655
1.56W

J. C. BAKER & SON, INC.
 Company The Mard Lick Oil & Gas Co.
 Address 612 Keyston Bldg. Hillsburg, Pa.
 Farm E. G. Davisson Heirs
 Tract _____ Acres 957 Lease No. _____
 Well (Farm) No. Six Serial No. 6-100
 Elevation (Spirit Level) 1212.0
 Quadrangle Crawford Mc Roanoke
 County Lewis District Collins Settlement
 Engineer W. O. Garrow
 Engineer's Registration No. 811
 File No. _____ Drawing No. _____
 Date June 14 1941 Scale 1" = 1000'

STATE OF WEST VIRGINIA
 DEPARTMENT OF MINES
 OIL AND GAS DIVISION
 CHARLESTON

WELL LOCATION MAP
 FILE NO. LEW-50-Red-P

+ Denotes location of well on United States Topographic Maps, scale 1 to 62,500, latitude and longitude lines being represented by border lines as shown.
 - Denotes one inch spaces on border line of original tracing.



Redrill - 8-25-69

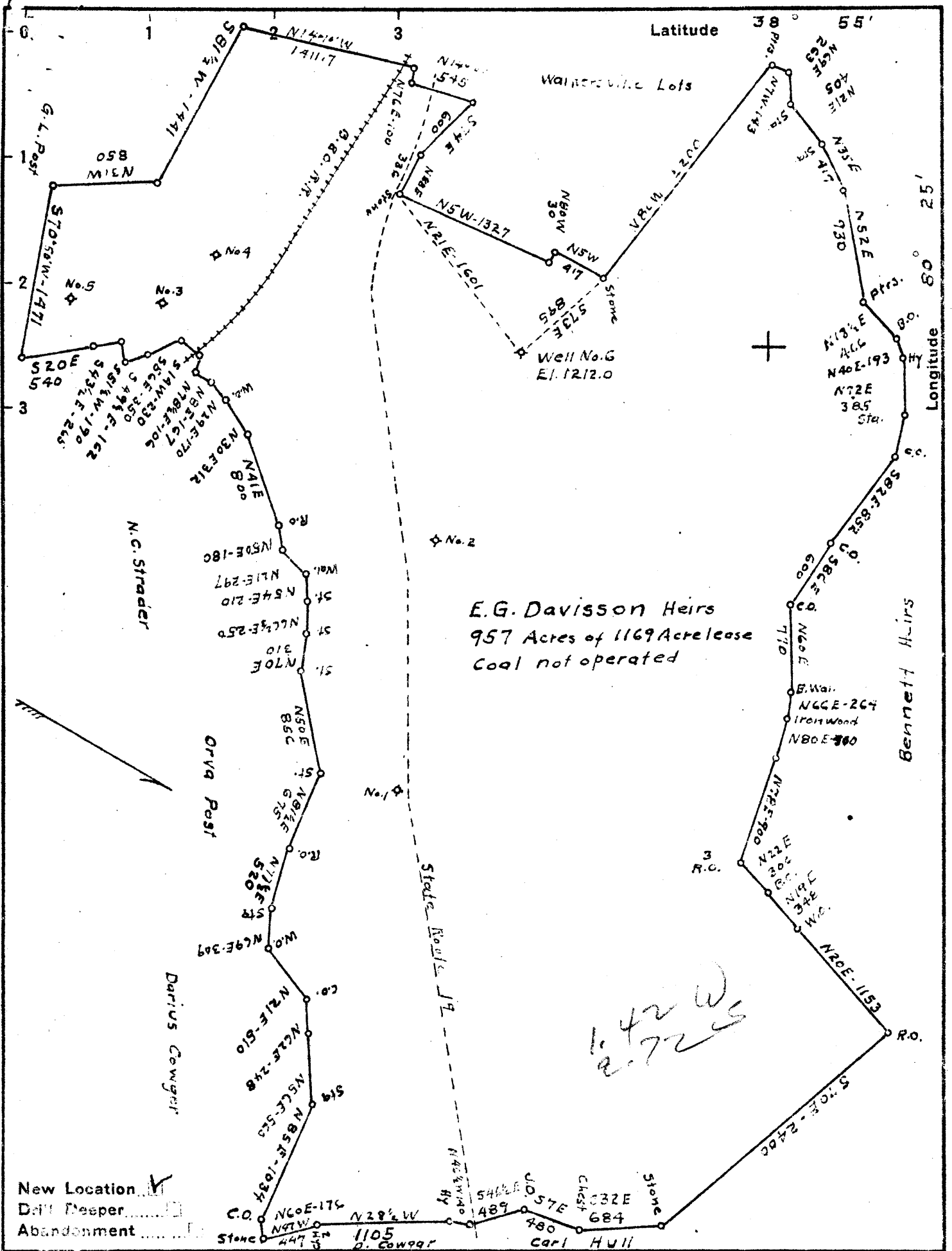
New Location
 Drill Deeper
 Abandonment

J. C. BAKER & SON, INC.
 Company The Mud Lick Oil & Gas Co.
 Address Gassaway, W. Va.
~~612 Keyston Bldg. Pittsburg Pa.~~
 Farm E.G. Davisson Heirs
 Tract _____ Acres 957 Lease No. _____
 Well (Farm) No. Six Serial No. 6-100
 Elevation (Spirit Level) 1212.0
 Quadrangle Crawford **WC**
 County Lewis District Collins Settlement
 Engineer C.O. Hewig
 Engineer's Registration No. 811
 File No. _____ Drawing No. _____
 Date June 14 1941 Scale 1" = 1000'

STATE OF WEST VIRGINIA
 DEPARTMENT OF MINES
 OIL AND GAS DIVISION
 CHARLESTON

WELL LOCATION MAP
 FILE NO. LEW-50-Red

+ Denotes location of well on United States Topographic Maps, scale 1: to 62,500, latitude and longitude lines being represented by border lines as shown.
 - Denotes one inch spaces on border line of original tracing.



E.G. Davisson Heirs
 957 Acres of 1169 Acre lease
 Coal not operated

New Location
 Drill Deeper
 Abandonment

Company The Mud Lick Oil & Gas Co.
 Address 612 Keystone Bldg. Pittsburg Pa.
 Farm E.G. Davisson Heirs
 Tract _____ Acres 957 Lease No. _____
 Well (Farm) No. Six Serial No. 6-100
 Elevation (Spirit Level) 1212.0
 Quadrangle Crawford **WC**
 County Lewis District Collins Settlement
 Engineer C.O. Jewwig
 Engineer's Registration No. 811
 File No. _____ Drawing No. _____
 Date June 14 1941 Scale 1" = 1000'

STATE OF WEST VIRGINIA
 DEPARTMENT OF MINES
 OIL AND GAS DIVISION
 CHARLESTON

WELL LOCATION MAP
 FILE NO. LEW-50

+ Denotes location of well on United States Topographic Maps, scale 1 to 62,500, latitude and longitude lines being represented by border lines as shown.
 - Denotes one inch spaces on border line of original tracing.

WATER RESOURCES DIVISION
UNITED STATES GEOLOGICAL SURVEY
WELL RECORD

Permit No. Low- 59

Company: East Lick Oil & Gas Co.
 Address: 612 Keystone Bldg.
 City: Cincinnati Akron 997
 Location: ---
 Well No: 200 Elev. 1212'
 District: ~~Collier~~ Hamilton County
 Mineral: U.S. Barleson Sale, Weston, W.Va.
 Commenced: June 26, 1941
 Completed: Aug. 4, 1941
 Shut: Aug 28 Depth: 2112-2151'
 Flow: 8/10ths W in 1"

Dry Hole
 Casing & Tubing
 10 100
 24 220
 6 5/8 1500 2000

Clay	S		16	
Slate	S	16	50	
Lime	H	50	150	
Slate	Dk	150	165	
Sand	Wh	165	220	
Slate	S	220	230	
Sand	H	230	290	
Slate & Shells	S	270	510	Gas 500' Little Water 525'
Sand	S	510	530	
Slate	S	530	535	
Sand	H	535	560	
Slate	S	560	565	
Sand	H	565	615	Little Water 610'
Slate	S	615	620	
Sand	H	620	690	
Slate	S	690	835	
Sand	H	835	865	
Slate & Shells	S	865	940	
Sand	H	940	1100	Bubble of Gas 950'
Slate	S	1100	1200	
Sand	H	1200	1265	
Slate	S	1265	1360	
Red Rock	S	1360	1365	
Slate	DM	1365	1385	
Red Rock	S	1385	1400	
Sand	H	1400	1415	
Red Rock	S	1415	1425	
Slate	S	1425	1440	
Shale & Lime	H	1440	1480	
Slate	S	1480	1485	
Sand	H	1485	1533	Gas at 1475'
Big Lins	H	1533	1517	Oil at 1507'
Big Injan	H	1517	1700	
Slate	S	1700	1730	
Sand	H	1730	1775	Oil 1775'
Slate	S	1775	1835	
Sand	H	1835	1890	Gas 1765'
Slate & Shell	S	1890	1945	
Red Rock	DM	1945	1990	Gas 1937'
Sand	H	1990	1970	
Slate	S	1970	1980	
Red Rock	S	1980	2000	
Sand	H	2000	2000	
Red Rock & Shell	S	2000	2070	
Sand	H	2070	2065	
Red Rock & Shell	S	2065	2115	Gas at 2115' - 2110'
Sand	H	2115	2135	
Slate	S	2135	2135	
Sand	H	2135	2200	
Slate	S	2200	2200	
Slate & Lime	H	2200	2225	
Slate	S	2225	2225	
Slate & Lime	H	2225	2225	

1941
 10 1/2
 11 1/2
 12 1/2



STATE OF WEST VIRGINIA
DEPARTMENT OF MINES
OIL AND GAS DIVISION

Rotary
Spudder
Cable Tools
Storage *Dry*
Oil or Gas Well *Gas*
(KIND)

Quadrangle *Crawford*

Permit No. *LW-50 Redrill*

WELL RECORD

Company <i>J. C. Baker & Son, Inc.</i>	Casing and Tubing	Used in Drilling	Left in Well	Packers
Address <i>Cassaway, W. Va.</i>	Size			
Farm <i>Wm D. Blair</i> Acres	16			Kind of Packer
Location (waters) <i>West Fork River</i>	13			Size of
Well No. <i>2</i> Elev. <i>1212</i>	10	<i>766'</i>	<i>none</i>	Depth set
District <i>Collins Settlement</i> County <i>Lewis</i>	8 1/4			
The surface of tract is owned in fee by	6%	<i>1587'</i>	<i>2000</i>	
Mineral rights are owned by <i>Wm D. Blair</i>	5 3/16			
Address <i>Charleston, W. Va.</i>	4 1/2			Perf. top
Drilling commenced <i>8/19/69</i>	3			Perf. bottom
Drilling completed <i>Oct. 1, 1969</i>	2			Perf. top
Date Shot From To	Liners Used			Perf. bottom
With				
Open Flow /10ths Water in Inch	Attach copy of cementing record.			
/10ths Merc. in Inch	CASING CEMENTED SIZE No. Ft. Date			
Volume Cu. Ft.	Amount of cement used (bags)			
Rock Pressure lbs. hrs.	Name of Service Co.			
Oil bbls., 1st 24 hrs.	COAL WAS ENCOUNTERED AT FEET INCHES			
WELL ACIDIZED (DETAILS)	FEET INCHES FEET INCHES			
WELL FRACTURED (DETAILS) No.	FEET INCHES FEET INCHES			
RESULT AFTER TREATMENT (Initial open Flow or bbls.)	<i>Non Commercial</i>			
ROCK PRESSURE AFTER TREATMENT HOURS				
Fresh Water Feet	Salt Water Feet			
Producing Sand	Depth			

Formation	Color	Hard or Soft	Top	Bottom	Oil, Gas or Water	Depth	Remarks
Slate & shells			2391	2425			
Lime			2425	2500			
Slate & shells			2500	2610			
Lime			2610	3000			
Slate & shells			3000	3190			
Lime			3190	3300			
Slate & shells			2900	3177			
Lime			2477	2610			
Slate & Shells			2610	3755			
Lime, Gritty			3755	3815			
Slate & shells			3815	4205			
Benson			4205	4320			
Lime, gritty			4320	4320			
Slate & shells			4320	4418			show of gas at 4430-35
Sand, Benson			4438				
total depth			1560				

OWDD 4560
2391
2169
New footage

PE Rpt 11/14/69

J. C. Baker & Son, Inc.

WELL NO. 2

PERMIT NO. LW-50

DATE NOV 1969

DRILLER: TOP 150

L. L. 1440 1460

S. L. 1533 1618

LOG: TOP 1618

BENSON: 4205 4220

DRILLER: TOP 150

S. L. 1617 1700

BENSON: 2110 2838

LOG: TOP 2838

BENSON: 4418 4438

WELL DEPTH BENSON: AC 195'

WELL NAME: S. E. G. DAYLISSEON METRS

DATE: 11/14/69

COMPLETION

