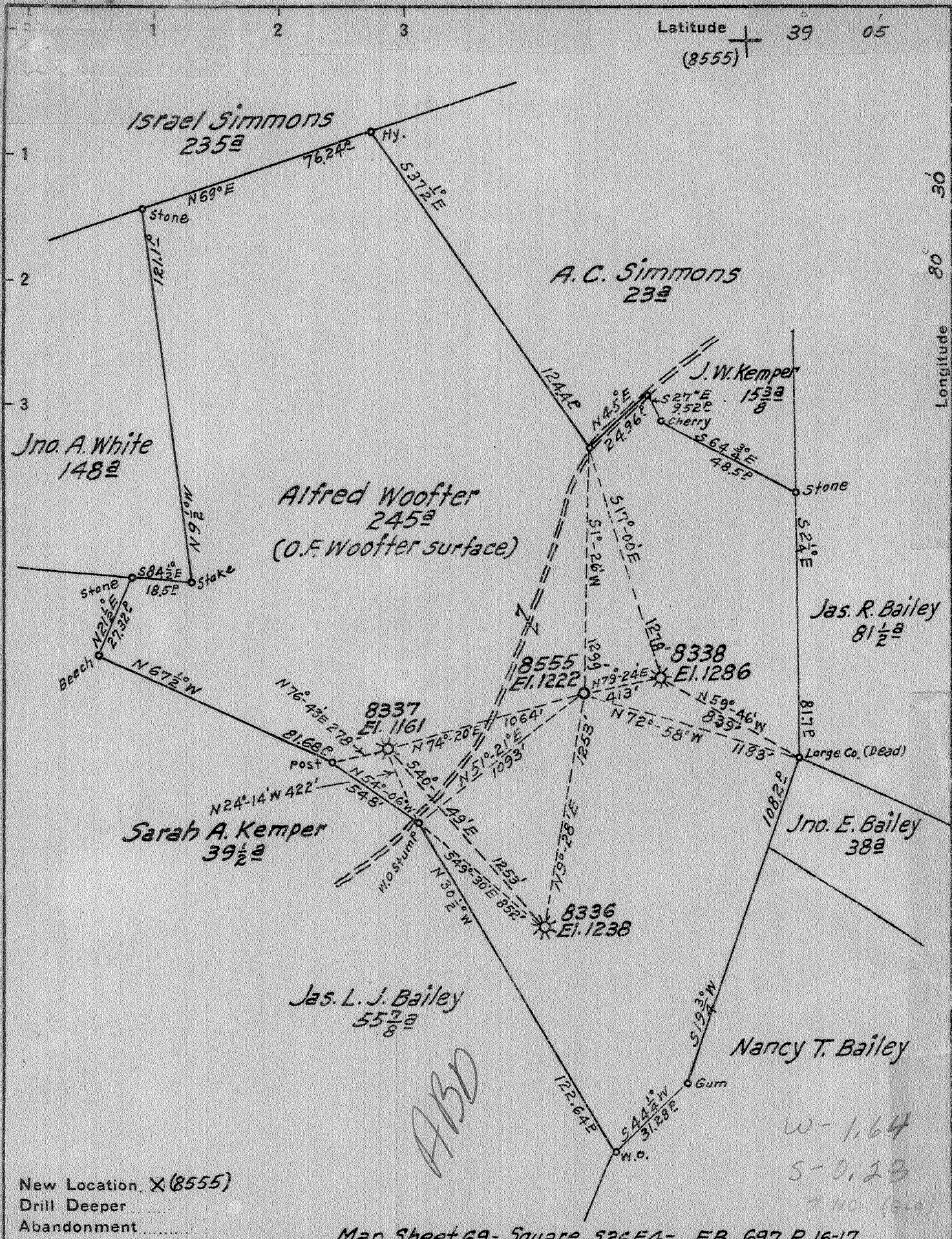


Latitude $39^{\circ} 05'$
(8555)

Longitude $80^{\circ} 30'$



New Location. X (8555)
Drill Deeper
Abandonment

Map Sheet 69-Square 526E4- FB. 697 P. 16-17

Company Hope Natural Gas Co
 Address Clarksburg, W.Va.
 Farm Alfred Woofter
 Tract _____ Acres 245 Lease No. 53205
 Well (Farm) No. _____ Serial No. 8336-8337
8338-8555
 Elevation (Spirit Level) 1238-1161-1286-1222
 Quadrangle Radis SE
 County Lewis District Freemans Creek
 Engineer W.M. Powers
 Engineer's Registration No. 900
 File No. _____ Drawing No. _____
 Date April 22, 1941 Scale 1" = 40 poles

STATE OF WEST VIRGINIA
DEPARTMENT OF MINES
OIL AND GAS DIVISION
CHARLESTON

WELL LOCATION MAP
FILE NO. LEW-49

+ Denotes location of well on United States Topographic Maps, scale 1 to 62,500, latitude and longitude lines being represented by border lines as shown.
 - Denotes one inch spaces on border line of original tracing.

WEST VIRGINIA DEPARTMENT OF MINES
OIL & GAS DIVISION
W E L L R E C O R D

| | | | | |
|-------------------|---------------------------------|-----------------|------|--------------------------|
| Permit No. Lew-49 | | Gas Well | | |
| Company | Hope Natural Gas Co | Casing & Tubing | | |
| Address | Clarksburg, W.Va. | | | |
| Farm | Alfred Woofter Acres 245 | 10 | 1393 | 1393 |
| Location | -- | 7 | 6710 | 6710 |
| Well No | 8555 Elev. 1222 | 2½ | 6993 | 6993 |
| District | Freemans Creek Lewis County | | | |
| Surface | O.F. Woofter, R#1 Weston, W.Va. | | | |
| Commenced | 6-5-1941 | | | Casing cemented. |
| Completed | 10-20-41 | | | 10" & 7" casing cemented |
| Shot | Nov. 1941 Depth Oriskany | | | |
| Volume | 474,000 A.S. (C.F.) | | | No coal recorded |
| Rock Pressure | 2185 lbs. 24 hrs | | | |

WELL LOG FROM SAMPLE ANALYSIS

| | | | | | | | |
|---------------|------------------|------|-------------|-------------------|---------------------|------|-------|
| Shale | Gr | 490 | 520 | Sand | Wh. Gr. to Grn | 2690 | 2722 |
| Siltstone | Gr | 520 | 528 | Sh & Siltst. | Gr. to Grn | 2722 | 2740 |
| Sandstone | Wh | 528 | 650 | Sand | Gr-Grn, fine | 2740 | 2754 |
| Shale | Bk | 650 | 660 | Limestone | Br, sandy | 2754 | 2758 |
| Sandstone | Gr to Wh | 660 | 721 | Sh. & Siltst. | Gr-Grn to Br | 2758 | 2870 |
| Shale | Gr | 721 | 780 | Sand | Gr, fine, limey | 2870 | 2880 |
| Sandstone | Gr to Wh | 780 | 810 | Shale | Gr | 2880 | 2925 |
| Shale | Gr | 810 | 840 | Sand | Dk. Br, fine | 2925 | 2970 |
| Sandstone | Gr | 840 | 880 | Sh. & Siltst. | Gr-Grn, & Br | 2970 | 4110 |
| Shale | Sandy | 880 | 891 | Sh. & Siltst. | Br & Gr | 4110 | 4295 |
| Sandstone | Gr-fine | 891 | 929 | Dolomite | Br, impure | 4295 | 4300 |
| Shale | Bk to Gr | 929 | 1021 | Sh. & Siltst. | Br. to Gr | 4300 | 4342 |
| Sandstone | Gr to Wh | 1021 | 1030 | Shale | Gr | 4342 | 4420 |
| Shale | Gr, Sandy | 1030 | 1083 | Sand | Gr to Wh, Fine | 4420 | 4429 |
| Sandstone | Wh-fine | 1083 | 1114 | Sh. & Siltst. | Gr-Grn | 4429 | 5400 |
| Siltstone | Br to Grn | 1114 | 1190 | Sh. & Siltst. | Gr to Bk | 5400 | 5800 |
| Sandstone | Gr to Grn | 1190 | 1225 | Shale | Gr, Br & Bk | 5800 | 6044 |
| Shale | Red to Grn | 1225 | 1334 | Shale | Gr & Bk, Calcite | | |
| Limestone | Br. Gr. Shaley | 1334 | 1345 L.L. | | Veins | 6044 | 6103 |
| Shale | Gr. Grn. R. Lmy | 1345 | 1358 | Shale | Gr to Bk, Soft | 6103 | 6410 |
| Limestone | Br. Gr, Sandy | 1358 | 1449 B.L. | Shale | Bk, limoy | 6410 | 6478 |
| Shale | Gr-green | 1449 | 1453 | Limestone | Gr, impure, silty | 6478 | 6503 |
| Limestone | Br-Gr, Sandy | 1453 | 1505 | Shale | Dk. Gr, Lime Shells | 6503 | 6620 |
| Sandstone | Fine, Br. Lmy | 1505 | 1520 | Shale | Dk, lime shells | 6620 | 6670 |
| Limestone | Gr-Wh, Shaley | 1520 | 1558 | Shale | Bk., V. Soft, Limoy | 6670 | 6680 |
| Shale | Gr. Grn. Sandy | 1558 | 1575 | Limestone | Gr, Cherty | 6680 | 6708* |
| Sandstone | Fine, Gr | 1575 | 1604 | Chert & Limestone | Br. to Gr | 6708 | 6907 |
| Shale | Gray | 1604 | 1610 | Sand | Wh, fine, hard | 6907 | 6912 |
| Sandstone | Gr to Grn, Fine | 1610 | 1628 | Chert & Limestone | Br & Gr limey | 6912 | 6940 |
| Sh. & Siltst. | Dk. Gr | 1628 | 1973 | Sand | Wh to Gr, hard | 6940 | 7025* |
| Sandstone | Wh to Br | 1973 | 1984 (30') | Sand | Gr. fine, limey | 7025 | 7040 |
| Shale | Gr-Grn, Sandy | 1984 | 2043 | Limestone | Gr | 7040 | 7100 |
| Sandstone | Gr-Wh | 2043 | 2060 (Gor.) | Sandstone | Gr., fine, hard | 7100 | 7121 |
| Shale | Gr | 2060 | 2090 (Str.) | Limestone | Gr, sandy | 7121 | 7274 |
| Sand | Wh to Gr | 2090 | 2119 (Gor.) | Sand | Gr & White, fine | 7274 | 7290 |
| Shale | Dk Gr | 2119 | 2264 | Limestone | Gr | 7290 | 7325 |
| Sand-petly | Br., Course, | 2264 | 2288-5th | | | | |
| Shale | Sandy-Gr to Grn, | 2288 | 2320 Gas- | | | | |
| Sand | Gr-Grn, Fine | 2320 | 2330 | TOTAL DEPTH | | | 7325 |
| Shale | Gr, sandy | 2330 | 2340 | | | | |
| Sand | Gr-grn. Fine | 2340 | 2371-Shaley | | | | |
| Sh. Siltst. | Gr to grn. | 2371 | 2672 | | | | |
| Limestone | Br. H, dense | 2672 | 2675 | | | | |
| Shale | Gr-Grn | 2675 | 2690 | | | | |

*(Huntersville Chert)

*(Oriskany Gas)

| | | |
|------|------|------|
| 6680 | 6907 | 7025 |
| 1222 | 1222 | 1222 |
| 5458 | 5685 | 5803 |

7325
2288
5037