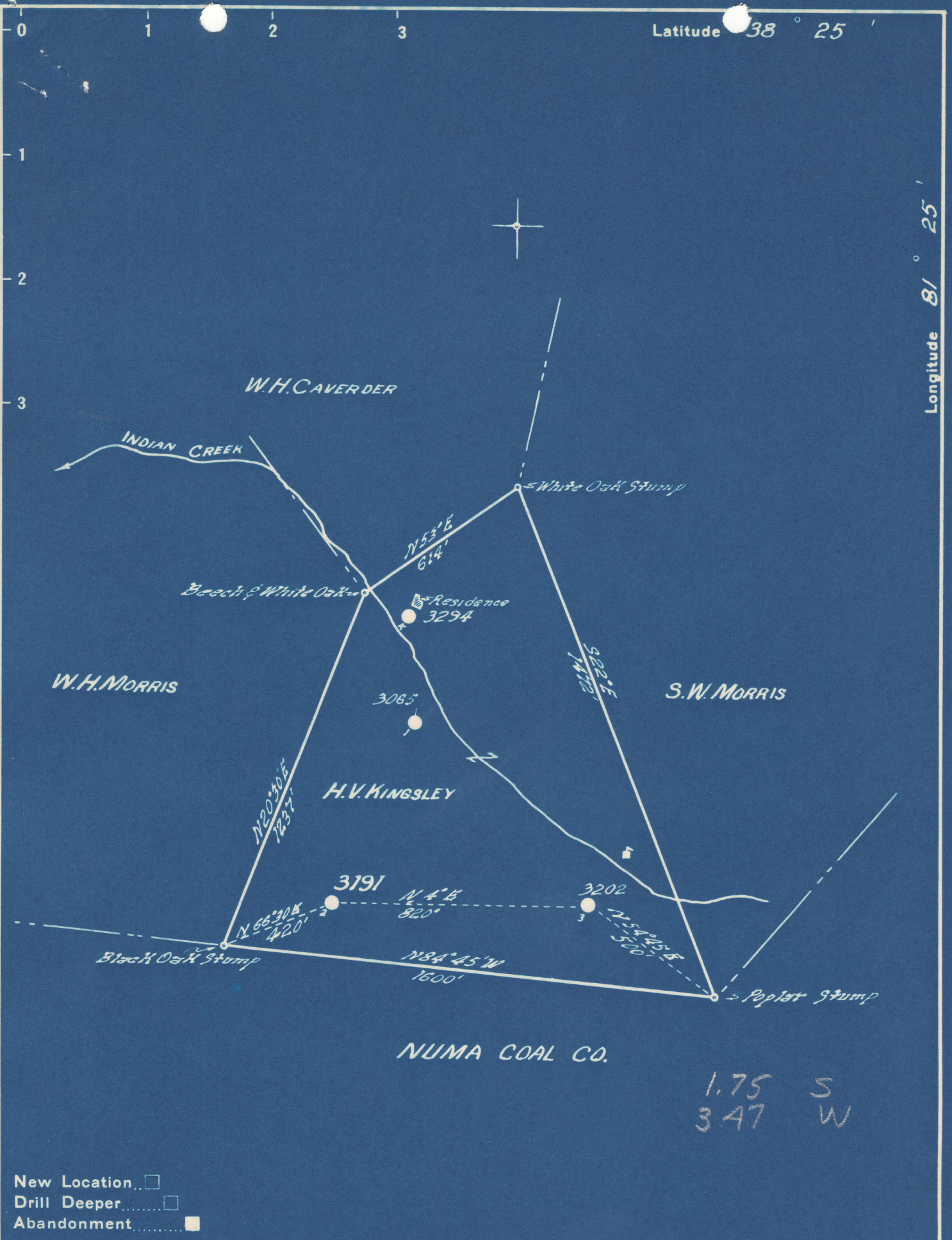


Latitude 38° 25'

Longitude 81° 25'



1.75 S
3.47 W

New Location...
 Drill Deeper...
 Abandonment...

Company VIRGINIAN GASOLINE & OIL CO.
 Address CHARLESTON, W. VA.
 Farm H.V. KINGSLEY
 Tract _____ Acres 30 Lease No. 893
 Well (Farm) No. 2 Serial No. 3191
 Elevation (Spirit Level) 924.3
 Quadrangle CLENDENIN
 County KANAWHA District E1K
 Engineer St. Morris
 Engineer's Registration No. 662
 File No. 70-61 Drawing No. _____
 Date AUGUST 31, 1948 Scale 1" = 400'

STATE OF WEST VIRGINIA
 DEPARTMENT OF MINES
 OIL AND GAS DIVISION
 CHARLESTON

WELL LOCATION MAP
 FILE NO. KAN-529-A

+ Denotes location of well on United States Topographic Maps, scale 1 to 62,500, latitude and longitude lines being represented by border lines as shown.

- Denotes one inch spaces on border line of original tracing.

6-5217

Elk District, Kanawha County, W. Va.
 By Virginian Gasoline & Oil Co., Box 1273, Charleston, 25, W. Va.
 Abandoned under permit Kan-.....-A?
 On 30 acres, on Indian Creek.
 Elevation, 924.3' L.
 Minerals owned by Nora Vickers et al., Pinch, W. Va.
 Drilling commenced June 23, 1915; completed Aug. 18, 1915.
 Shot Aug. 18, 1915, at....., with 180 qts.
 Oil, 20 bbls., 1st 24 hrs.
 8 $\frac{1}{4}$ " casing, 645' (pulled); 6 $\frac{5}{8}$ ", 1615'; 5 $\frac{3}{16}$ ", 1657'.
 Oil well. Abandonment reported to Dept. of Mines Sept. 1, 1948.
 Record to RCT from Mrs. Griffith Jan. 5, 1949. Old File No. 1337.

	Top.	Bottom.
Slate	0	80
Sand	80	150
Slate	150	250
Sand	250	330
Slate	330	400
Sand	400	450
Slate and lime shells	450	520
Sand	520	550
Slate	550	580
Sand	580	635
Slate	635	720
Sand	720	790
Slate and lime shells	790	880
Salt Sand	880	955
Slate	955	980
Salt Sand	980	1400
Lime	1400	1495
Red rock	1495	1500
Slate	1500	1510
Red rock	1510	1520
Sand and lime shells	1520	1535
Slate	1535	1555
Little Lime	1555	1580
Pencil Cave	1580	1585
Lime shells	1585	1590
Slate	1590	1595
Black lime	1595	1610
Big Lime	1610	1760
Big Injun Sand	1760	1840
Squaw Sand (gas, 1865-1870')	1840	1910
Weir Sand (top pay, 1920'; more oil, 1994')	1910	2022
Total depth		2034



STATE OF WEST VIRGINIA
DEPARTMENT OF MINES
OIL AND GAS DIVISION

1337

WELL RECORD

Permit No. 529A

ABANDONMENT

Oil or Gas Well Oil
(KIND)

Company VIRGINIAN GASOLINE & OIL CO.
Address P.O. Box 1273, Charleston 25, W. Va.
Farm H. V. Kingsley Acres 30
Location (waters) Indian Creek
Well No. 3191 Elev. 924.3
District Elk County Kanawha
The surface of tract is owned in fee by _____
Address _____
Mineral rights are owned by Nora Vickers et al
Pinch, W. Va. Address _____
Drilling commenced 6-23-15
Drilling completed 8-18-15
Date Shot 8-18-15 From _____ To _____
With 180 Qts.
Open Flow /10ths Water in _____ Inch
/10ths Merc. in _____ Inch
Volume _____ Cu. Ft.
Rock Pressure _____ lbs. _____ hrs.
Oil 20 bbls., 1st 24 hrs.
Fresh water _____ feet _____ feet
Salt water _____ feet _____ feet

Casing and Tubing	Used in Drilling	Left in Well	Packers
Size			
16			Kind of Packer
13			
10			Size of
8 1/4	645	Pulled	
6 5/8	1615	1615	Depth set <u>50 1/2</u>
5 3/16	1657	1657	<u>173 joints</u>
3			Perf. top
2		<u>all</u>	Perf. bottom <u>19 1/6</u>
Liners Used			Perf. top
			Perf. bottom

CASING CEMENTED _____ SIZE _____ No. Ft. _____ Date _____
COAL WAS ENCOUNTERED AT _____ FEET _____ INCHES
_____ FEET _____ INCHES FEET _____ INCHES
_____ FEET _____ INCHES FEET _____ INCHES

Formation	Color	Hard or Soft	Top	Bottom	Oil, Gas or Water	Depth Found	Remarks
Slate				80			
Sand			80	150			
Slate			150	250			
Sand			250	330			
Slate			330	400			
Sand			400	450			
Slate & Lime Shells			450	520			
Sand			520	550			
Slate			550	580			
Sand			580	635			
Slate			635	720			
Sand			720	790			
Slate & Lime Shells			790	880			
Salt Sand			880	955			
Slate			955	980			
Salt sand			980	1400			
Lime			1400	1495			
Red Rock			1495	1500			
Slate			1500	1510			
Red Rock			1510	1520			
Sand & Lime Shells			1520	1535			
Slate			1535	1555			
Little Lime			1555	1580			
Pencil Cave			1580	1585			
Lime Shells			1585	1590			
Slate			1590	1595			
Black Lime			1595	1610			
Big Lime			1610	1760			
Big Injun			1760	1840			
Squaw			1840	1910			
Weir Sand			1910	2022			
Total Depth				2034	Top Pay Gas More Oil	1920 1865-1870 1994	



