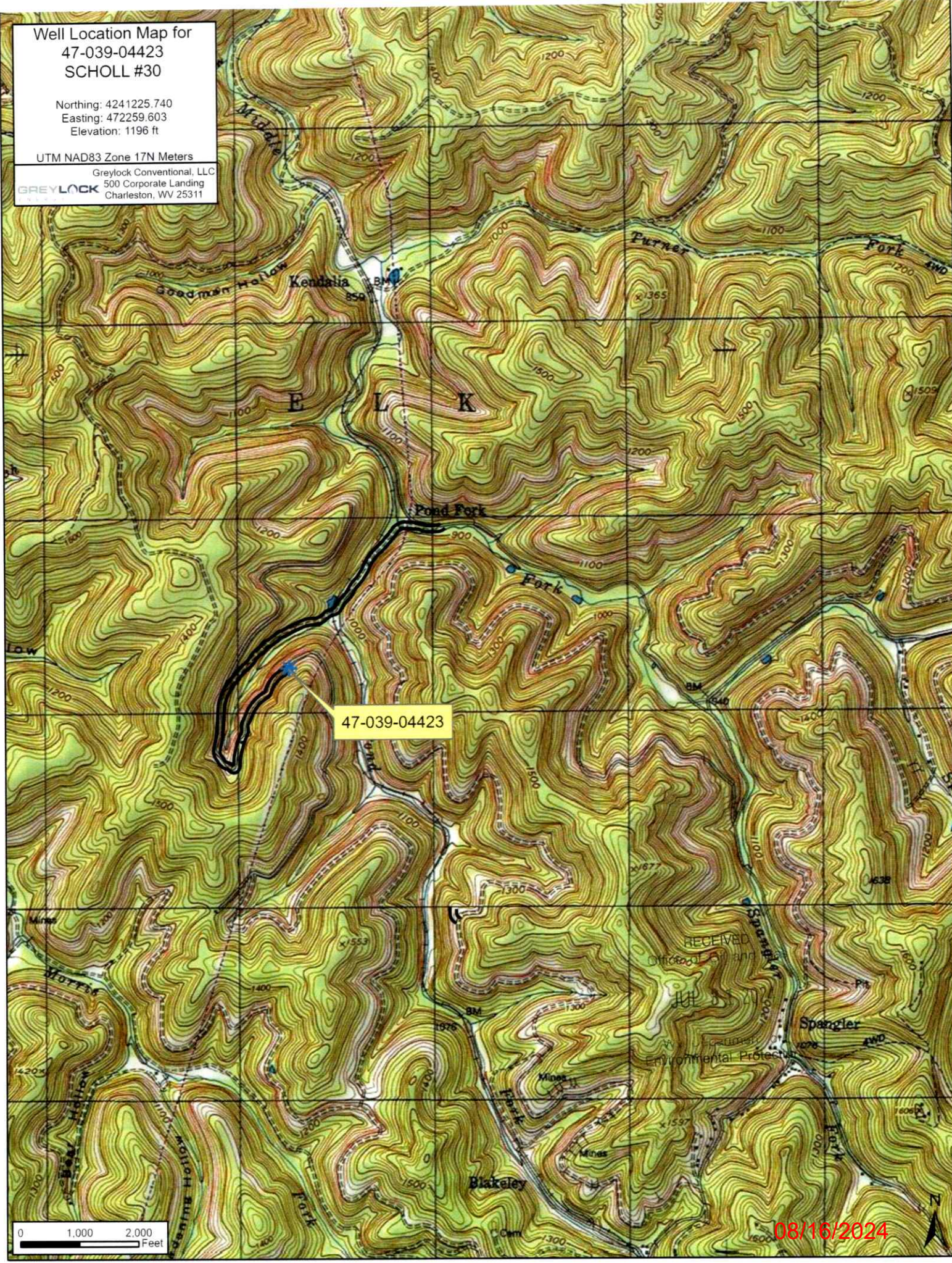


Well Location Map for
47-039-04423
SCHOLL #30

Northing: 4241225.740
Easting: 472259.603
Elevation: 1196 ft

UTM NAD83 Zone 17N Meters

Greylock Conventional, LLC
500 Corporate Landing
Charleston, WV 25311

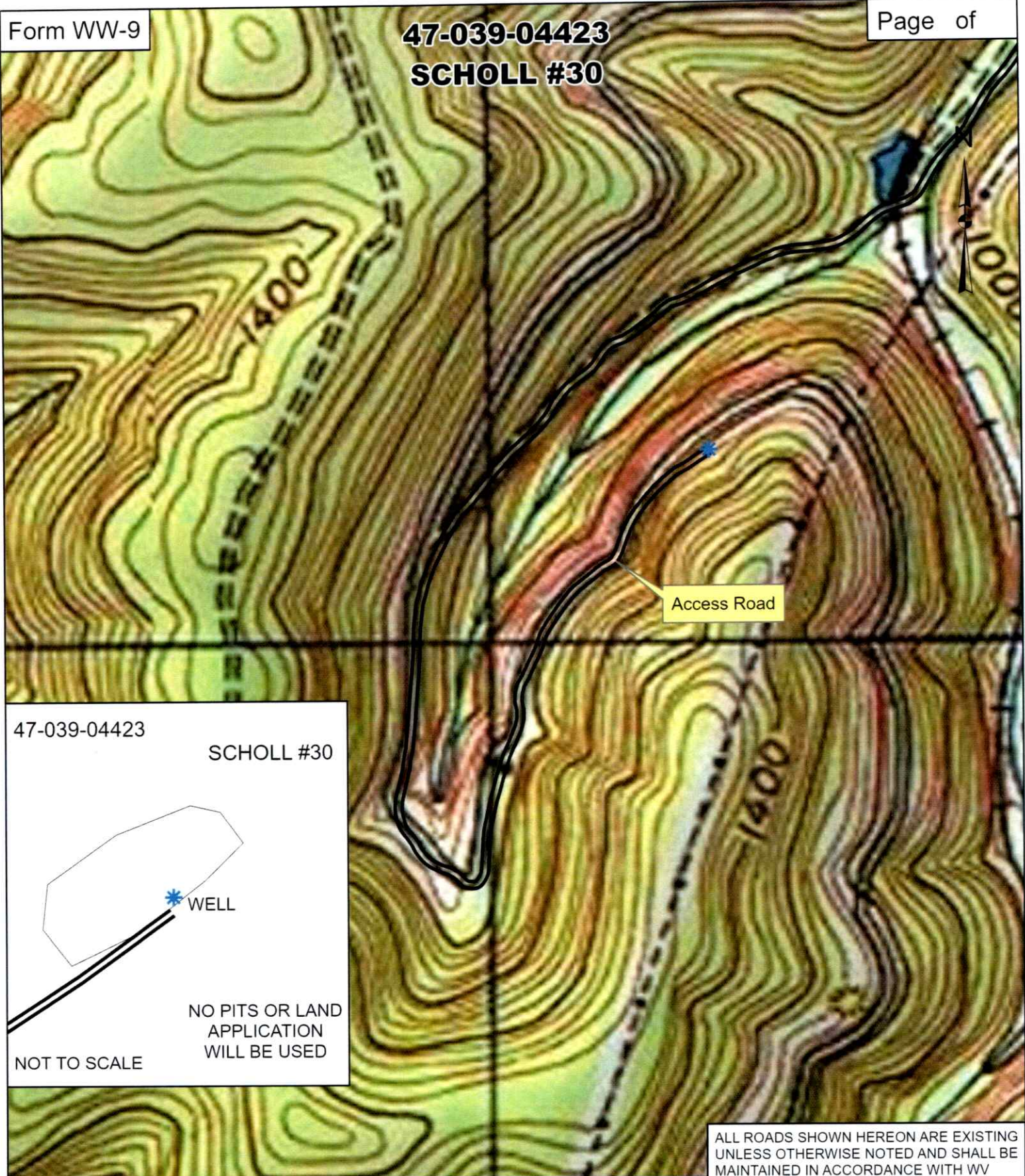


47-039-04423



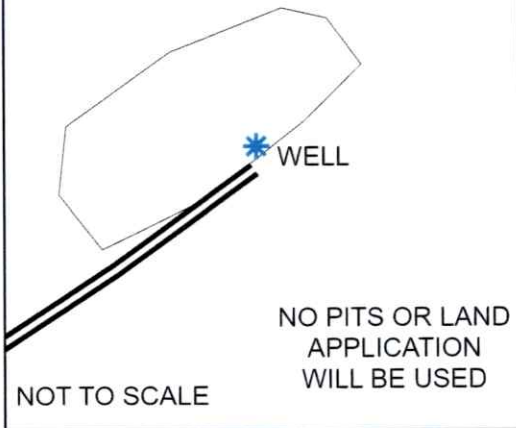
08/16/2024

RECEIVED
Office of Oil and
Gas
July 25 2024
WV Department
Environmental Protection



47-039-04423

SCHOLL #30



Access Road

ALL ROADS SHOWN HEREON ARE EXISTING UNLESS OTHERWISE NOTED AND SHALL BE MAINTAINED IN ACCORDANCE WITH WV D.E.P. OIL AND GAS BMP MANUAL ENTRANCES AT COUNTY/STATE ROADS SHALL BE MAINTAINED WITH WV D.O.T. REGULATION. SEPARATE PERMITS MAY BE REQUIRED BY D.O.T.

EARTHWORK CONTRACTORS ARE RESPONSIBLE FOR NOTIFICATION TO THE OPERATOR AND **08/16/2024** TO ANY DEVIATION FROM THIS PLAN.

GREYLOCK
ENERGY

Greylock Conventional, LLC

500 Corporate Landing Charleston, WV 25311
304-925-6100 - www.greylockenergy.com

Date: 5/23/2024

0 150 300 600 900 1,200



Feet

1:6,000



TOPO SECTION OF USGS
MAMMOTH 7.5' QUADRANGLE

WW-7
8-30-06



West Virginia Department of Environmental Protection
Office of Oil and Gas

WELL LOCATION FORM: GPS

API: 47-039-04423 WELL NO.: 30

FARM NAME: Scholl

RESPONSIBLE PARTY NAME: Greylock Conventional, LLC.

COUNTY: Kanawha DISTRICT: Elk

QUADRANGLE: Mammoth 7.5

SURFACE OWNER: We R Farmers

ROYALTY OWNER: _____

UTM GPS NORTHING: 4241225.74

UTM GPS EASTING: 472259.60 GPS ELEVATION: 1196 ft

The Responsible Party named above has chosen to submit GPS coordinates in lieu of preparing a new well location plat for a plugging permit or assigned API number on the above well. The Office of Oil and Gas will not accept GPS coordinates that do not meet the following requirements:

1. Datum: NAD 1983, Zone: 17 North, Coordinate Units: meters, Altitude: height above mean sea level (MSL) – meters.
2. Accuracy to Datum – 3.05 meters
3. Data Collection Method:

Survey grade GPS _____: Post Processed Differential _____
Real-Time Differential _____

Mapping Grade GPS X: Post Processed Differential _____
Real-Time Differential X

RECEIVED
Office of Oil and Gas

JUL 31 2024

WV DEPARTMENT
Environmental Protection

4. **Letter size copy of the topography map showing the well location.**

I the undersigned, hereby certify this data is correct to the best of my knowledge and belief and shows all the information required by law and the regulations issued and prescribed by the Office of Oil and Gas.

G-M 24
Signature

Asset Dev. Manager
Title

5/20/24
Date

08/16/2024