

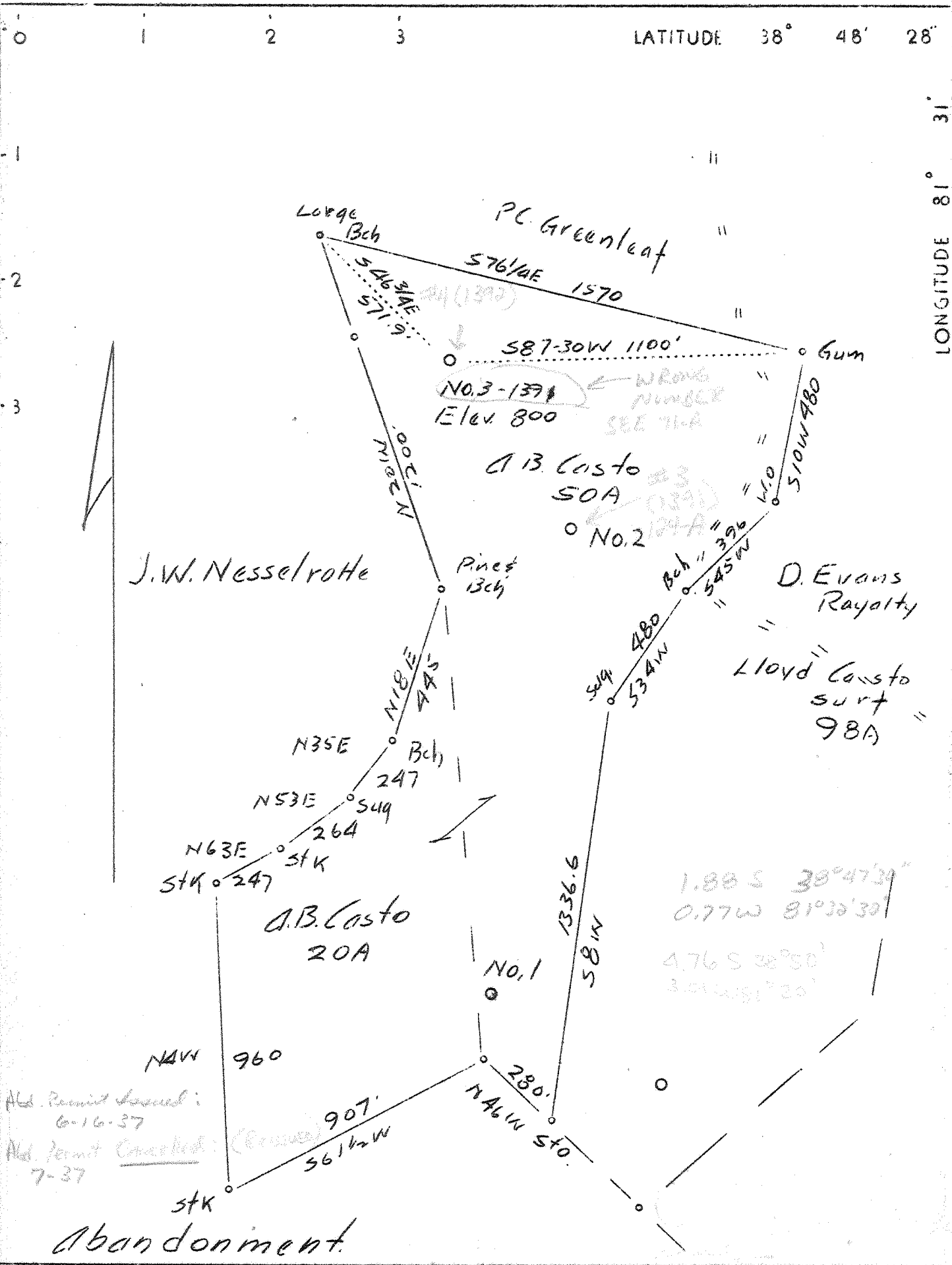
Abd-Permit ISSUED 1-24-38 FEB - 8 1938

Company	Walker-Beren Oil Co.
Address	Box 96, Parkersburg, W.Va.
Farm	A.B.Casto
Tract	1 Acres 50 Lease No.
Well (Farm)	No. 4.1392 Serial No.
Elevation ( Spirit Level)	800 F.
Quadrangle	Ripley (SE)
County	Jackson District Washington
Engineer	Wm. Litton, Surveyor
Engineer's Registration No.	
File No.	Drawing No.
Date	May 20, 1937 Scale 1"=400'

STATE OF WEST VIRGINIA  
 Department of Mines  
 OIL AND GAS DIVISION  
 CHARLESTON  
 WELL LOCATION MAP  
 File No. JAC-71A  
 WAS LOCATION FOR 65-A  
 + Denotes location of well on United States Topographic Maps, scale 1 to 62,500, latitude and longitude lines being represented by border lines as shown.  
 - Denotes one inch spaces on border line of original tracing.

LATITUDE 38° 48' 28"

LONGITUDE 81° 31'



Company Walker Beren Oil Company  
 Address P.O.Box 1105, Parkersburg, W.Va.  
 Farm A.B. Casto  
 Tract 1 & 2 Acres 70 Lease No. \_\_\_\_\_  
 Well (Farm) No. 3 Serial No. 1391  
 Elevation (Spirit Level) 800'  
 Quadrangle Ripley, W.Va. SE  
 County Jackson District Washington  
 Engineer Wm. Litton  
 Engineer's Registration No. \_\_\_\_\_  
 File No. \_\_\_\_\_ Drawing No. \_\_\_\_\_  
 Date May 29 Scale 1"-400'

STATE OF WEST VIRGINIA  
 Department of Mines  
 OIL AND GAS DIVISION *Record for #3 (1391) is with Inc. 12412*  
 CHARLESTON

WELL LOCATION MAP  
 File No. JAC-65A  
~~CANCELLED~~ *REMOVED AS 71-A*

+ Denotes location of well on United States Topographic Maps, scale 1 to 62,500, latitude and longitude lines being represented by border lines as shown.

— Denotes one inch spaces on border line of original tracing.