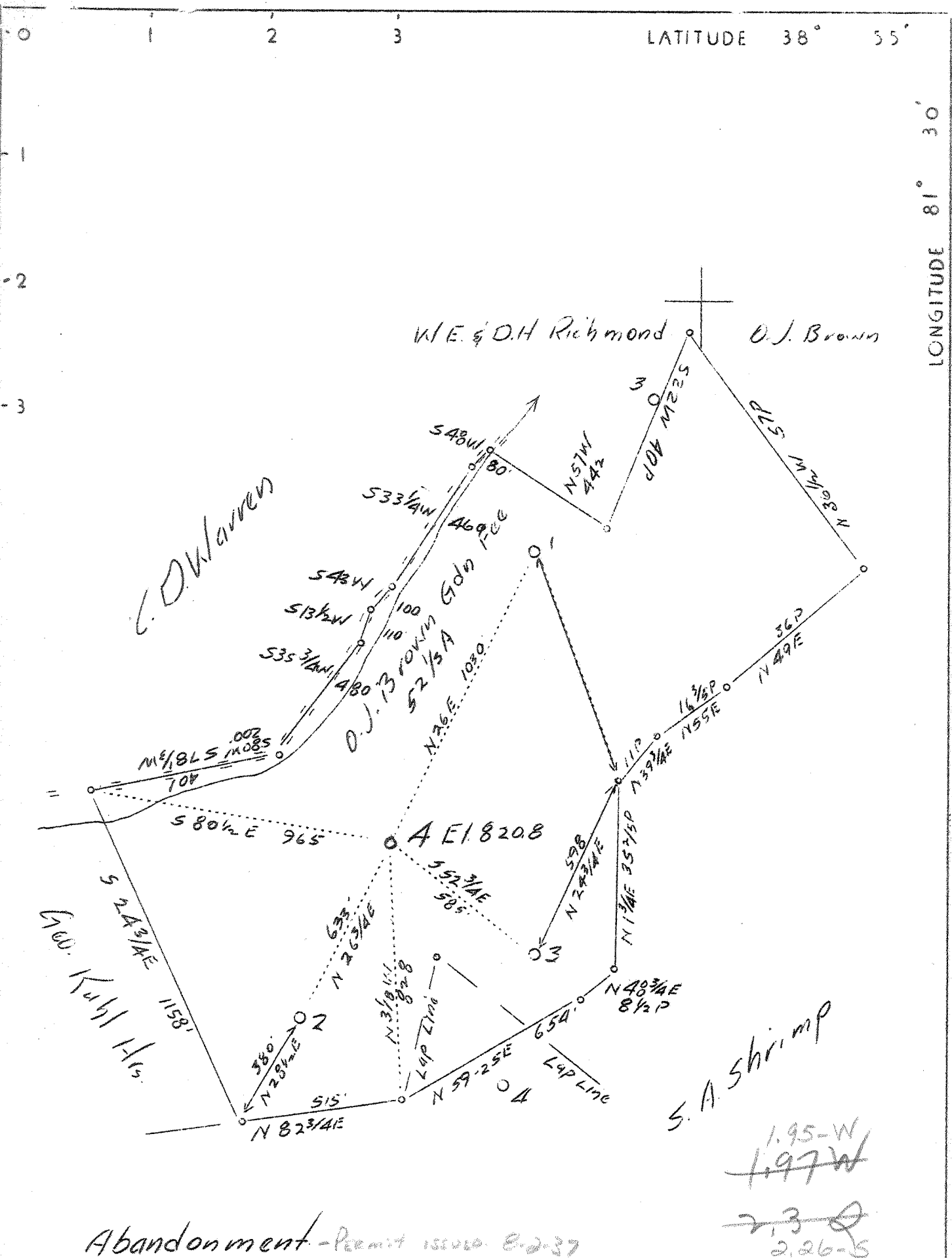


LATITUDE 38° 55'

LONGITUDE 81° 30'



Abandonment - Permit issued E-2-37

1.95-W  
1.97-W  
~~2.3~~  
2.26-S

Company	South Penn Oil Co.
Address	411 Seventh Ave., Pittsburgh, Pa.
Farm	O.J. Brown Gdn.
Tract	Acres 52-1/3 Lease No. 79652
Well (Farm) No.	4 Serial No.
Quadrangle	Ripley <i>EC</i>
County	Jackson
District	Ravenswood
Engineer	Emmon Haines
Engineer's Registration No.	
File No.	Drawing No.
Date	June 12, 1937 Scale 1"=400'

STATE OF WEST VIRGINIA  
 Department of Mines  
 OIL AND GAS DIVISION  
 CHARLESTON

WELL LOCATION MAP  
 File No. JAC-70A

+ Denotes location of well on United States Topographic Maps, scale 1 to 62,500, latitude and longitude lines being represented by border lines as shown.

— Denotes one inch spaces on border line of original tracing.

O. J. BROWN, GUARDIAN NO. 4 WELL.

70A

Ravenswood District, Jackson County, W. Va.  
By South Penn Oil Co.  
On.....acres.  
Elevation, 820.8'.  
Completed April 10, 1929.  
Keller Map G-22.  
Oil well.

	Top.	Bottom.
Salt Sand (salt water, 1800')	1773	- 1967
Big Lime	1967	- 2035
Big Injun Sand	2035	- 2069
Brown shale	2142	- 2456
Berea Sand (oil, 2457-2466') (Bl. 1635.2')	2456	- 2466
Blue Lime	2466	- 2476
Total depth		2476

SEE JAC 70-A

WEST VIRGINIA DEPARTMENT OF MINES  
OIL AND GAS DIVISION

52

WELL RECORD

OIL

Permit No. JAC-70-A

Oil or Gas Well (Kind)

Company SOUTH PENN OIL COMPANY  
 Address 411 Seventh Ave., Pittsburgh, Pa.  
 Farm O. J. Brown, Gdn. 52-1/3 Acres  
 Location (waters) Sand Creek  
 Well No. 4 Elev. 820.80'  
 District Ravenswood County Jackson  
 The surface of tract is owned in fee by O. J. Brown, Gdn. Liverpool, W. Va.  
 Mineral rights are owned by O. J. Brown, Gdn. et al Liverpool, W. Va.  
 Drilling commenced March 7, 1929  
 Drilling completed April 10, 1929 2456 1/2  
 Date shot April 15, 1929 Depth of shot 2474  
 Open Flow /10ths Water in. Inch  
 /10ths Merc. in. Inch  
 Volume Cu. Ft.  
 Rock Pressure lbs. hrs.  
 Oil bbls., 1st 24 hrs.  
 Fresh water feet feet  
 Salt water 1800 feet feet

Casing and Tubing	Used in Drilling	Left in Well	Packers
Size			
16.			Kind of Packer
13.			Steel Shoe
10.	830 (Pulled)		Size of
8 1/4	1186 (Pulled)		6-5/8"
6 5/8	2107		Depth set
5 3/16			2068'
3.			Perf. top
2.	Tub. 2476		Perf. bottom
Liners Used			Perf. top
Cond. 16			Perf. bottom

CASING CEMENTED SIZE No. FT. Date  
 COAL WAS ENCOUNTERED AT FEET INCHES  
 FEET INCHES FEET INCHES  
 FEET INCHES FEET INCHES

Formation	Color	Hard or Soft	Top	Bottom	Oil Gas or Water	Depth Found	Remarks
✓ Salt Sand			1773	1967	Water	1800	
✓ Big Lime			1967	2035			
✓ Big Injun			2035	2069			
✓ Brown Shale			2142	2456			
✓ Berea			2456	2466	Oil	2457-2466	
Blue Lime			2466	2476			
Total Depth				2476			

410

