





### input coordinates

enter comma delimited coordinates. examples:  
38 15 30.1, -81 25 15.2 (lat, lon as degrees minutes seconds)  
38.123456, -81.123456 (lat, lon as decimal degrees)  
500000, 4100000 (UTM as easting, northing)  
1987654.32, 364123.45 (WV state plane as easting, northing)

38.901006464,-81.571221241

Lat/Lon WGS 1984

Convert

### output coordinates

450468.24,4305945.46

UTM NAD83 Zone 17N

view on Google Maps

### options

- display output as degrees/minutes/seconds
- zoom to point

### history (copy/paste)

1,38.9010065,-81.5712212,LL  
WGS84(G1674),450468.24,4305945.46,UTM17N  
NAD83(2011)

RECEIVED  
Office of Oil and Gas

DEC 2 2020

WV Department of  
Environmental Protection

### notes about datum conversions

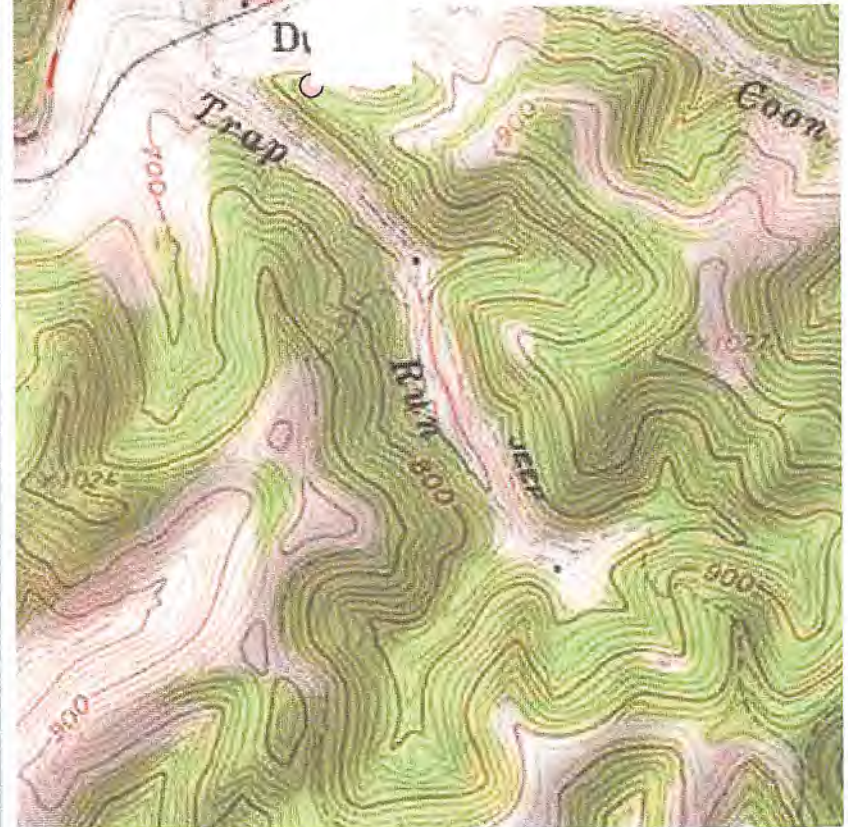
1. *Conversions between NAD27 and NAD83.* This converts between NAD27 and NAD83(1986) using the NADCON transformation. Newer realizations of NAD83, such as NAD83(CORS96) and NAD83(2011) can differ from NAD83(1986) by a meter or so. This conversion uses the Esri transformation NAD\_1927\_To\_NAD\_1983\_NADCON.

2. *Conversions between NAD27 and WGS84.* Basically this just applies the NADCON transformation from NAD27 to NAD83(1986). NAD83(1986) is the original realization of NAD83, which is practically identical to the original WGS84. The difference between the



#### Point #1

County: Jackson  
 huc-10: Left Fork Sandy Creek-Sandy Creek  
 huc-12: Right Fork Sandy Creek (050302020502)  
 Zip: 25252 (LE ROY)  
 Quadrangle: Liverpool  
 Near: Duncan (Populated Place)  
 elevation: 742.58 (226.34m) *227.5840 = 746.47'*  
 wxbrief: 385403.6N/813416.4W



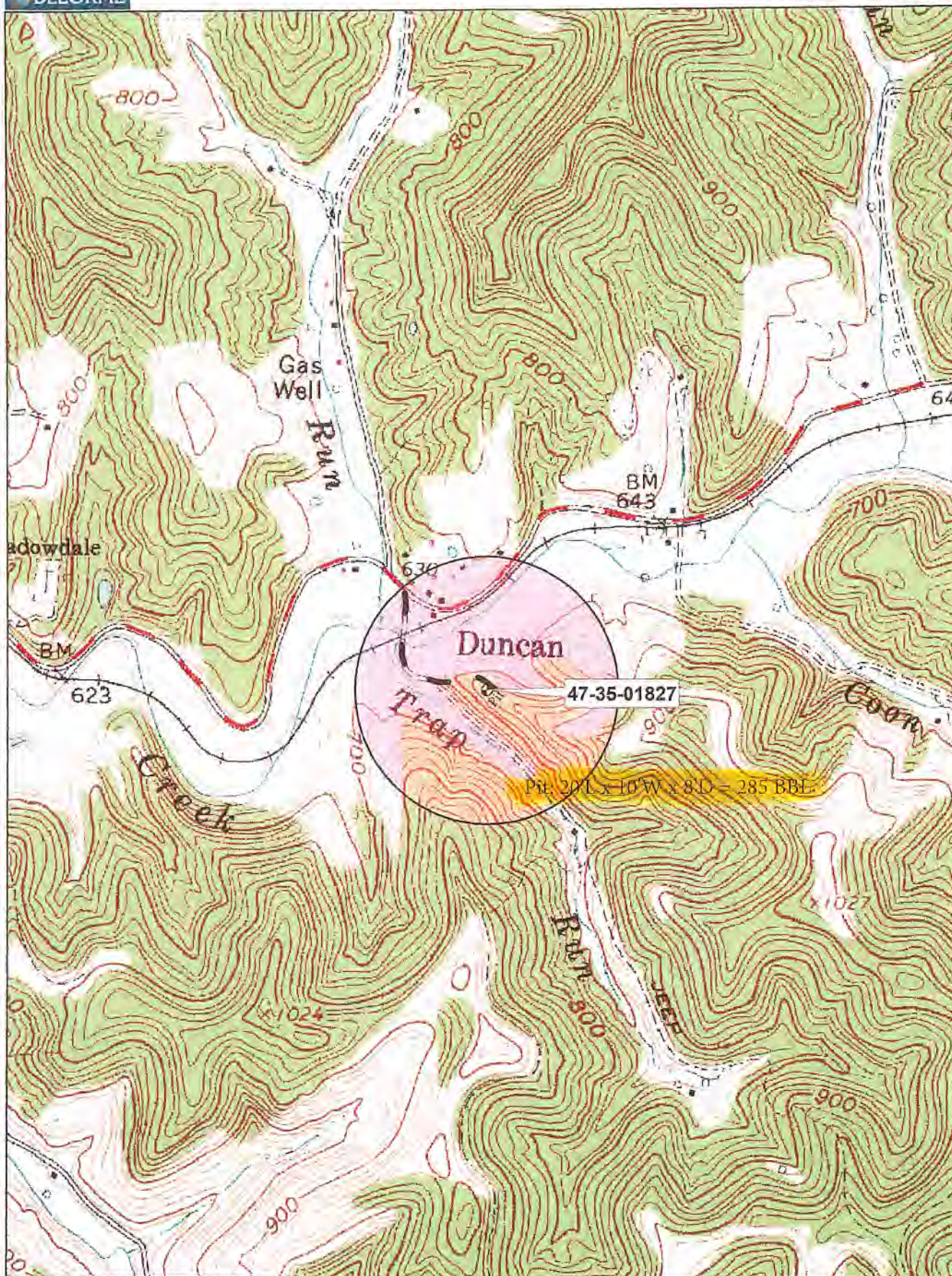
clear markers

street map

image

topo





Data use subject to license. **RECEIVED**  
 © DeLorme, XMap® 8. Office of Oil and Gas  
 www.delorme.com

DEC 2 2 2020

WV Department of  
 Environmental Protection

