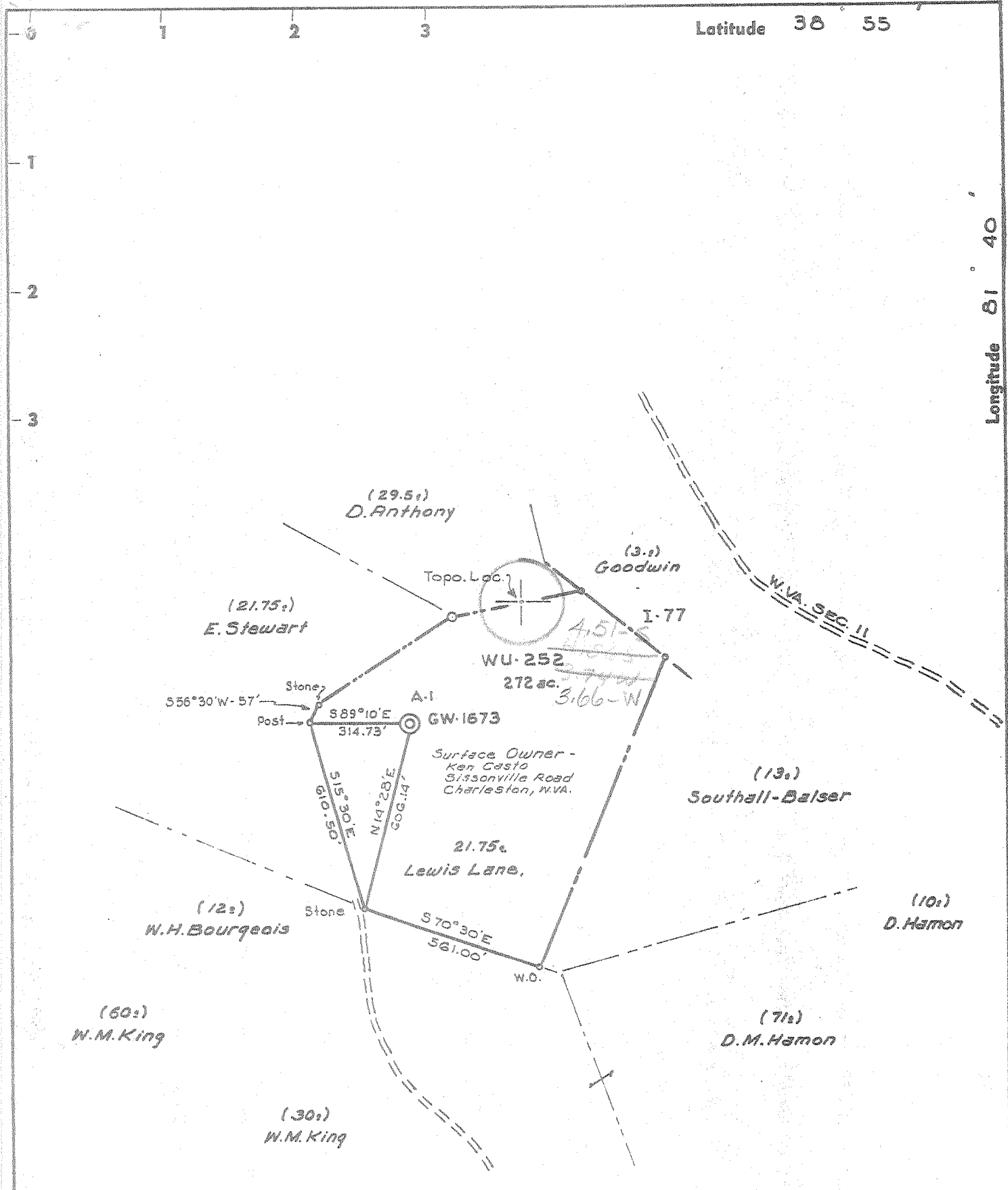


Latitude 38 55

Longitude 81 40



- New Location
- Drill Deeper
- Redrill
- Abandonment

Degree of Accuracy is one part in 200
 Bench Mark: U.S.G.S. Data Point at intersect W.V.A. Sec. 11 & 12/5. Elev. 718'
 "I, the undersigned, hereby certify that this map is correct to the best of my knowledge and belief and shows all the information required by paragraph 6 of the rules and regulations of the oil and gas section of the mining laws of West Virginia."

Company	CITIES SERVICE OIL COMPANY
Address	Box 873, CHARLESTON, W.VA.
Farm	LEWIS LANE ETAL CONSOL.
Tract	Acres 21.75 Lease No. WU-252
Well (Farm) No.	A-1 Serial No. GW-1673
Elevation (Spirit Level)	813.39'
Quadrangle	RIPLEY WC
County	JACKSON District RIPLEY
Engineer	Wendell S. Moore
Engineer's Registration No.	2113
File No.	Drawing No. W-8-70
Date	MAY 12, 1970 Scale 1"=400'

STATE OF WEST VIRGINIA
 DEPARTMENT OF MINES
 OIL AND GAS DIVISION
 CHARLESTON

WELL LOCATION MAP
 FILE NO. JAC-1208

+ Denotes location of well on United States Topographic Maps, scale 1 to 62,500, latitude and longitude lines being represented by border lines as shown.
 - Denotes one inch spaces on border line of original tracing.



STATE OF WEST VIRGINIA
DEPARTMENT OF MINES
OIL AND GAS WELLS DIVISION 3

Rotary
Spudder
Cable Tools
Storage

Quadrangle Ripley
Permit No. JAC-1208

WELL RECORD

Oil or Gas Well Gas
(KIND)

Company Cities Service Oil Company
Address Box 873, Charleston, W. Va. 25323
Farm Lewis Lane, et al Acres 272
Location (waters) _____
Well No. "A" #1, GW-1673 Elev. 813.39'
District Ripley County Jackson
The surface of tract is owned in fee by Ken Gasto
Sissonville Road Address Charleston, W. Va.
Mineral rights are owned by Lewis Lane
Box 170 Address Pataskala, Ohio

Casing and Tubing	Used in Drilling depth set	Left in Well	Packers
Size			Kind of Packer
16			none
13 3/8" 48#	65'	all	Size of
8-5/8" 24#	2271'	all	Depth set
5-1/2" 17#	5566'	all	Perf. top
4 1/2			Perf. bottom
3			Perf. top
2 3/8" 4, 6#	5619'	5619'	Perf. bottom
Liners Used			

Drilling commenced 5-25-70
Drilling completed 6-15-70
Date Shot not shot From _____ To _____
With _____
Open Flow /10ths Water in _____ Inch
/10ths Merc. in _____ Inch
Volume _____ Cu. Ft.
Rock Pressure _____ lbs. _____ hrs.
Oil _____ bbls., 1st 24 hrs.
WELL ACIDIZED (DETAILS) Not acidized
WELL FRACTURED (DETAILS) See reverse side

Attach copy of cementing record.
CASING CEMENTED _____ SIZE _____ No. Ft. _____ Date _____
Amount of cement used (bags) _____
Name of Service Co. See reverse side
COAL WAS ENCOUNTERED AT _____ FEET _____ INCHES
_____ FEET _____ INCHES _____ FEET _____ INCHES
_____ FEET _____ INCHES _____ FEET _____ INCHES

RESULT AFTER TREATMENT (Initial open flow or bbls.) 43,800 MCF (Newburg) CAOF 4 pt. test 4.3 bbls. per min.
ROCK PRESSURE AFTER TREATMENT 24 HOURS 1,712#
Fresh Water 376' Feet Salt Water _____ Feet
Producing Sand Newburg Sand 5612-5616' Depth per electric logs

Formation	Color	Hard or Soft	Top	Bottom	Oil, Gas or Water	Depth	Remarks
Shale			0	30			
Sandy Shale			30	85			
Sand			85	115			
Shale			115	130			
Sand			130	170			
Shale, Sandy			170	481	F. water	376'	
Shale			481	529			
Sandy Shale			529	536			
Shale			536	545			
Shaley Sand			545	808			
Sand			808	1105			
Shale			1105	1200			
Sand			1200	1432			
Shale and Sand			1432	1490			
Sand - Salt sand			1490	1666			
Sandy Shale			1666	1746			
Lime - Big lime			1746	1945			
Sandy Lime - layers and others			1945	2205			
Sand			2205	2266			
Shale			2266	4769			
Lime			4769	5566			
Lime			5566	5621			
Newburg Sand			5621	5630	Gas	5,623'	Est. 15 MMC
Total depth				5630'	Drillers' Meas.		
				5616'	Bedwell's meas.		
Electric logs show:				535			
Newburg Sand			5612	5616			

RECEIVED
SEP 24 1970
OIL & GAS DIVISION
DEPT. OF MINES

Formation	Color	Hard or Soft	Top 3	Bottom	Oil, Gas or Water	Depth Found	Remarks
CASING INFORMATION							
5-25-70							Set and cemented 13-3/8" 48# B-grade casing at 65' with 65 sacks cement with 3% Ca. Cl. added. Cement circulated to surface.
6-9-70							Set and cemented 8-5/8" 24# H-40 new casing at 2,271' with 320 sacks Pozmix followed with 100 sacks of regular cement. Did not circulate to surface. Good circulation of gel while cementing.
6-14-70							Set and cemented 5-1/2" 17# K-55 new casing at 5566' with 133 sacks Lite Poz-3 cement and 35 sacks Latex cement. Pumped 200 bbls. gel with lost circulation material ahead of cement. Gel circulated to surface. Hole stopped circulating just before plug hit float. Hole standing full. Ran Birdwell GR inside drive pipe at 5,476'. Top of Onondaga by GR Log 4,770'. Float at 5,536'. Centralizers at 5,536', 5,497', 5,351', 5,285' and 5,159'
6-17-70							Ran Birdwell Gamma Ray Log
6-25-70							<u>Fractured the Newburg Sand</u> Pumped 500 gallons mud acid and followed with 12,000# 10-20 sand in 19,300 gallons gelled water. Maximum treating pressure 5,300#. Average treating pressure 4,733#. AIR 7.6 bbls/min.
7-8-70							4 Pt. bottom hole absolute O. F. 11,250 MCFD - 72 hour SIP 1,906#.
8-31-70							<u>Refractured the Newburg Sand</u> Pumped 500 gallons mud acid and followed with 27,500# 20-40 sand in 36,000 gallons gelled water. Maximum treating pressure 4,900#. Average treating pressure 4,700#. AIR 21 bbls/min.
9-4-70							Turned into line. Gas measuring 6,800 MCFD against 860# line pressure with 1,200# on tubing and 1,775# on annulus. 4 pt. test to be run in line.
9-22-70							4 Pt. CAOF by United Fuel 43,800 MCFD. 24 hour SIWHP 1,712#

Date September 23, 1970.

APPROVED Cities Service Oil Company, Owner

by J. D. Todd, Region Prod. Manager
(Title)