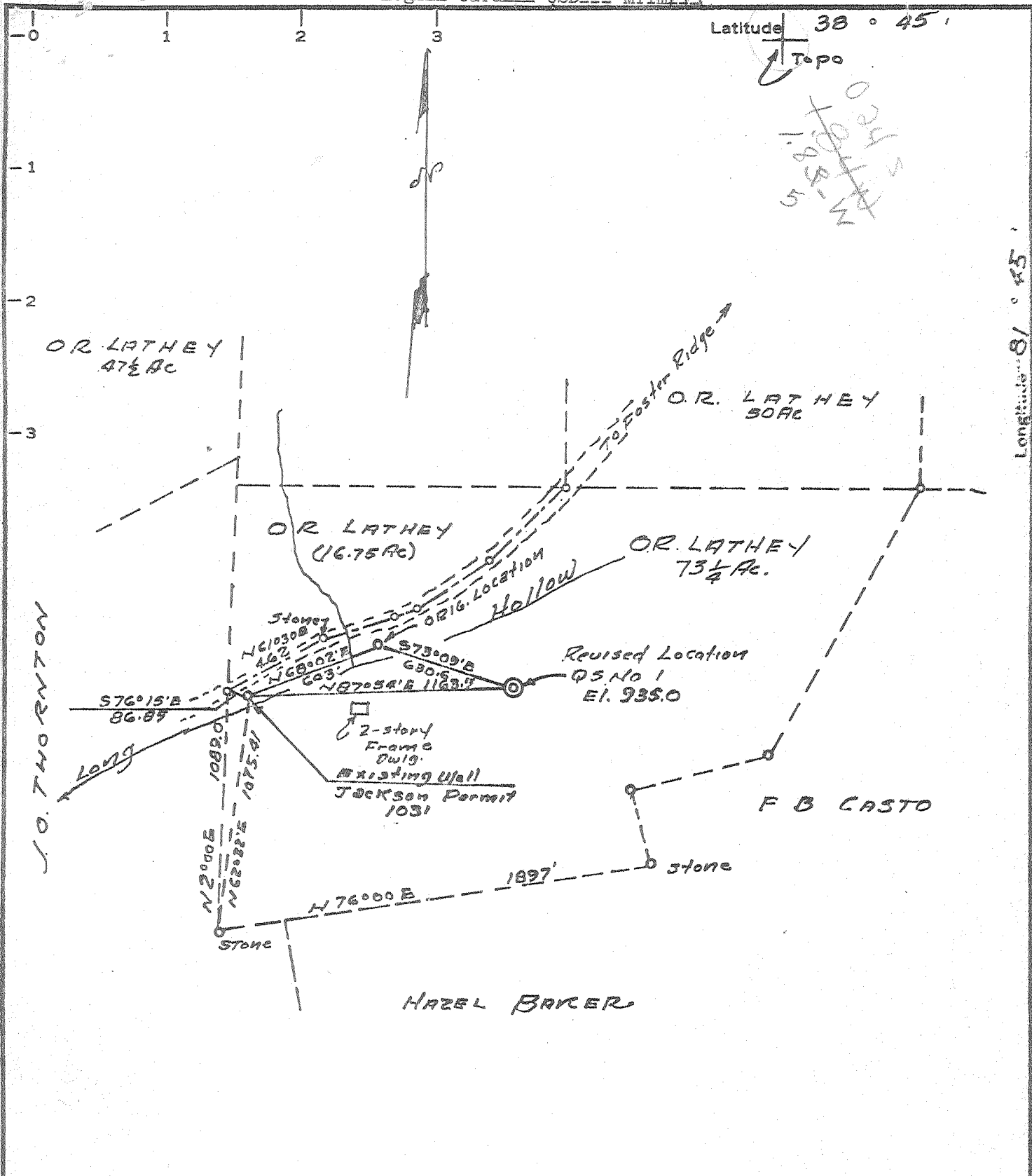


Latitude 38° 45'
 Topo



MINIMUM ERROR OF CLOSURE 1' in 200

SOURCE OF ELEVATION OR Lathey Well No. 1 Jackson Permit No 1031 Elev 791.05

New Location
 Drill Deeper
 Abandonment
 9-27-68

"I, THE UNDERSIGNED, HEREBY CERTIFY THAT THIS MAP IS CORRECT TO THE BEST OF MY KNOWLEDGE AND BELIEF AND SHOWS ALL THE INFORMATION REQUIRED BY PARAGRAPH 6 OF THE RULES AND REGULATIONS OF THE OIL AND GAS SECTION OF THE MINING LAWS OF WEST VIRGINIA."

Company QUAKER STATE OIL REFG. CORP
 Address PO Box 1327 Parkersburg, W. Va.
 Farm OR LATHEY
 Tract _____ Acres 73 1/4 Lease No. _____
 Well (Farm) No. Q5 No 1 Serial No. _____
 Elevation (Spirit Level) 935.0
 Quadrangle Winfield NE
 County Jackson District Ripley
 Engineer J. F. [Signature]
 Engineer's Registration No. 2492
 File No. _____ Drawing No. _____
 Date July 25 1968 Scale 1" = 600'

STATE OF WEST VIRGINIA
 DEPARTMENT OF MINES
 OIL AND GAS DIVISION
 CHARLESTON
 code this as a new location
 WELL LOCATION MAP
 FILE NO. JAC-1156-REV.-P-~~1-2~~ 69
 7-29-68
 + Denotes location of well on United States Topographic Maps, scale 1 to 62,500, latitude and longitude lines being represented by border lines as shown.
 - Denotes one inch spaces on border line of original tracing.
 The drilling was cancelled



STATE OF WEST VIRGINIA
DEPARTMENT OF MINES
OIL AND GAS DIVISION

WELL RECORD

Rotary
Spudder
Cable Tools
Storage
Oil or Gas Well *Gas*

WELL RECORD FAILED TO APPEAR
IN THE ALLEN SERVICE WHEN PARTIAL
PLUG WAS ISSUED - PARTIAL PLUG
ORDER CANCELLED.

Location WINFIELD
Permit No. JAC-1156 (~PP)

Company QUAKER STATE OIL REFINING CORPORATION
Address P. O. Box 1327, Parkersburg, W. Va.
Owner O. R. Lathey Acres 73 1/2
Location (waters) Long Hollow
Well No. ONE Elev. 935.0
District Ripley County Jackson
The surface of tract is owned in fee by
Address
Mineral rights are owned by O. R. Lathey
Address Ripley, W. Va.
Drilling commenced 8-2-68
Drilling completed 9-2-68
Date Shot From To

Casing and Tubing	Used in Drilling	Left in Well	Packers
Size			Kind of Packer
16			*Cnt. w/240 sacks
13	198 *		Size of
10			Depth set
8-5/8	2638		**Cmt'd 8-28-68 by Dowell w/160 cf
6 3/4			Perf. top
3-3/8 x 16 5/8	5656 **		Perf. bottom
4 1/2			Perf. top
3			Perf. bottom
2			Perf. top
Liners Used			Perf. bottom

Open Flow /10ths Water in Inch
/10ths Merc. in Inch
Volume 311 MCF - Oriskany 311 MCF Cu. Ft.
Rock Pressure 1040 lbs. hrs.
Oil bbls., 1st 24 hrs.

Attach copy of cementing record.
CASING CEMENTED 8-5/8 SIZE No. Ft. 8-22-68 Date
Amount of cement used (bags) 80 sacks
Name of Service Co. Dowell
COAL WAS ENCOUNTERED AT FEET INCHES
FEET INCHES FEET INCHES
FEET INCHES FEET INCHES

WELL FRACTURED (DETAILS)

RESULT AFTER TREATMENT (Initial open Flow or bbls.)
ROCK PRESSURE AFTER TREATMENT HOURS
Fresh Water 135 Feet Salt Water Feet
Producing Sand Oriskany Depth

311 MCF 5010
5698 5698
935 4982
4765 716

Formation	Color	Hard or Soft	Top	Bottom	Oil, Gas or Water	Depth	Remarks
Surface			0	41			
Gravel			41	69			
Sand			69	100			
Sand & shale			100	1974	Fresh water @ 135'		
Shale			1974	2130			
Shale			2130	2608			
Shale			2608	2618			
Shale			2618	4891			
Oriskany Sand			4891	4982	Gas - 311 MCF		
Helderberg			4982	5010			
Mass Island-Salina			5010	5200			
Newburg Interval			5200	5698			
McKenzie			5698	5714 (not developed)			
TOTAL DEPTH			5714	5765			
			5765	5765			

Dry hole footage 5765
5010
755
(Make note yel. copy Card)

