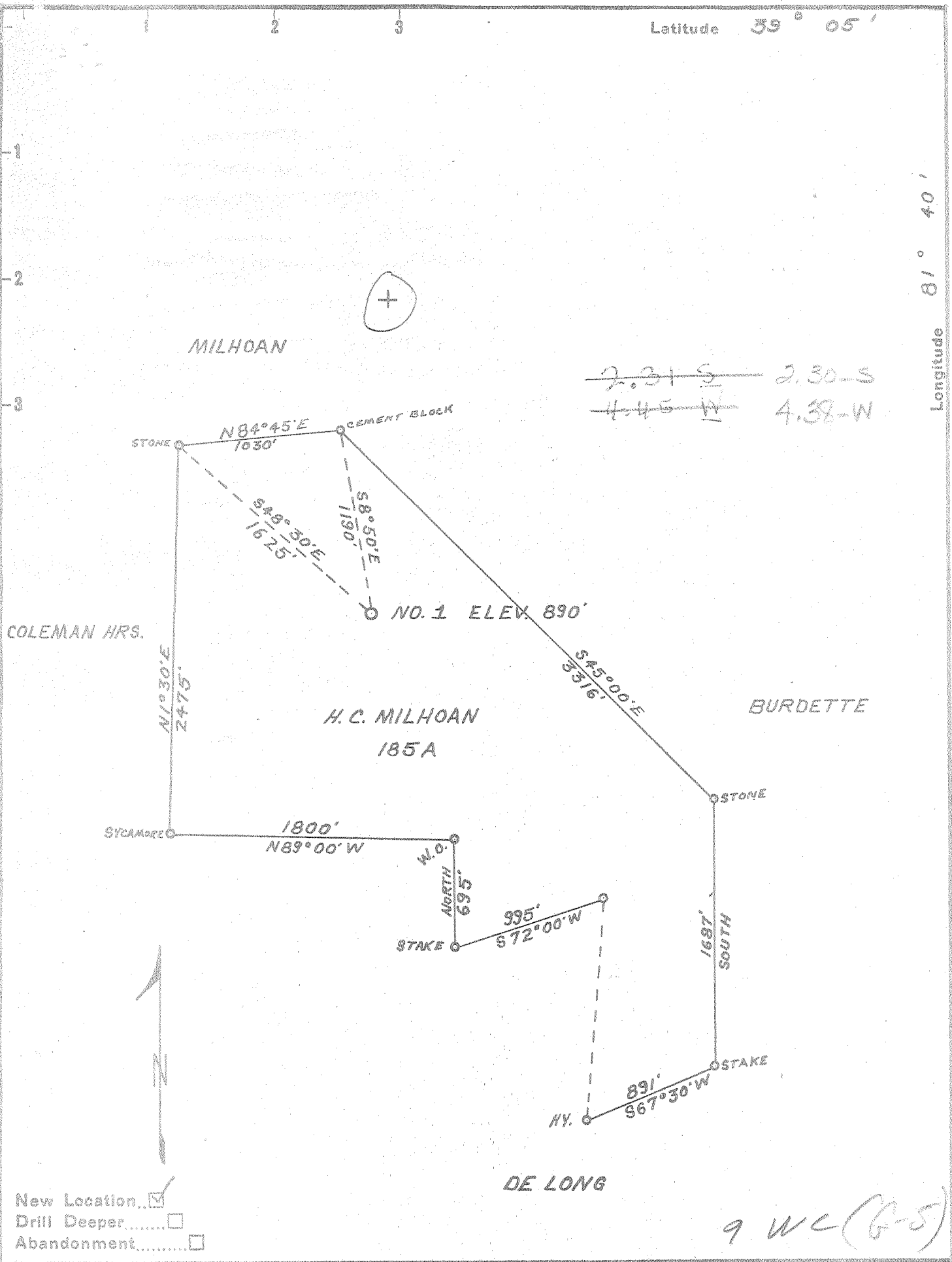


Latitude 39° 05'

Longitude 81° 40'



New Location...    
 Drill Deeper.....    
 Abandonment.....

9 WC (G-5)

Company D. D. FOSTER

Address 501 ALCOA BLDG., PITT. 19, PENNA.

Farm H. C. MILHOAN

Tract \_\_\_\_\_ Acres 185 Lease No. \_\_\_\_\_

Well (Farm) No. 1 Serial No. \_\_\_\_\_

Elevation (Spirit Level) 890

Quadrangle BELLEVILLE - SW

County JACKSON District GRANT

Engineer Douglas W. Morris  
 SURVEYED BY J. F. DEEM  
 Engineer's Registration No. 1653

File No. \_\_\_\_\_ Drawing No. \_\_\_\_\_

Date DEC. 16, 1953 Scale 1" = 800'

STATE OF WEST VIRGINIA  
 DEPARTMENT OF MINES  
 OIL AND GAS DIVISION  
 CHARLESTON

WELL LOCATION MAP  
 FILE NO. JAC-864

+ Denotes location of well on United States Topographic Maps, scale 1 to 62,500, latitude and longitude lines being represented by border lines as shown.

- Denotes one inch spaces on border line of original tracing.

~~3-2~~ Neptune 255

Deep Well V



STATE OF WEST VIRGINIA  
DEPARTMENT OF MINES  
OIL AND GAS DIVISION 5

Quadrangle Belleville

WELL RECORD

Permit No. Jac-861

Oil or Gas Well Gas  
(KIND)

Company D. D. Foster  
Address 501 Alcoa Building, Pittsburgh 19,  
Farm Carl Milhoan Acres 185  
Location (waters) Little Pond Creek  
Well No. 1 Elev. 878  
District Grant County Jackson  
The surface of tract is owned in fee by Carl Milhoan  
Address Ravenswood, W. Va.  
Mineral rights are owned by Carl Milhoan  
Address \_\_\_\_\_  
Drilling commenced July 27, 1954  
Drilling completed October 21, 1954  
Date Shot \_\_\_\_\_ From \_\_\_\_\_ To \_\_\_\_\_  
With \_\_\_\_\_

| Casing and Pa. Tubing       | Used in Drilling | Left in Well  | Packers               |
|-----------------------------|------------------|---------------|-----------------------|
| Size                        |                  |               | Anchor                |
| 16                          |                  |               | Kind of Packer        |
| 18 <u>3/8</u>               | <u>34'</u>       | <u>34'</u>    |                       |
| 10                          | <u>785</u>       | <u>Pulled</u> | Size of               |
| <del>8 1/2</del> <u>5/8</u> | <u>1310'</u>     | <u>1310'</u>  | <u>Steel Shoe</u>     |
| <del>7 3/8</del> <u>7</u>   | <u>1945'</u>     | <u>1945'</u>  | Depth set <u>4417</u> |
| <del>5 3/4</del> <u>1/2</u> | <u>4470'</u>     | <u>4470'</u>  | <u>Anchor</u>         |
| 3                           |                  |               | Perf. top             |
| 2                           |                  |               | Perf. bottom          |
| Liners Used                 | <u>None</u>      |               | Perf. top             |
|                             |                  |               | Perf. bottom          |

Open Flow /10ths Water in \_\_\_\_\_ Inch  
/10ths Merc. in \_\_\_\_\_ Inch  
Volume 360000 Cu. Ft.  
Rock Pressure 1340 lbs. \_\_\_\_\_ hrs.  
Oil \_\_\_\_\_ bbls., 1st 24 hrs.  
Fresh water 375' 600' feet \_\_\_\_\_ feet  
Salt water \_\_\_\_\_ feet \_\_\_\_\_ feet

CASING CEMENTED \_\_\_\_\_ SIZE \_\_\_\_\_ No. Ft. \_\_\_\_\_ Date \_\_\_\_\_  
See Reverse Side.  
COAL WAS ENCOUNTERED AT None FEET \_\_\_\_\_ INCHES  
\_\_\_\_\_ FEET \_\_\_\_\_ INCHES \_\_\_\_\_ FEET \_\_\_\_\_ INCHES  
\_\_\_\_\_ FEET \_\_\_\_\_ INCHES \_\_\_\_\_ FEET \_\_\_\_\_ INCHES

| Formation                 | Color | Hard or Soft | Top  | Bottom | Oil, Gas or Water | Depth Found | Remarks        |
|---------------------------|-------|--------------|------|--------|-------------------|-------------|----------------|
| Surface                   |       |              | 0    | 10     |                   |             |                |
| Red Rock                  |       |              | 10   | 35     |                   |             |                |
| Sand                      |       |              | 35   | 50     |                   |             |                |
| Red Rock                  |       |              | 50   | 70     |                   |             |                |
| Slate                     |       |              | 70   | 80     |                   |             |                |
| Red Rock                  |       |              | 80   | 120    |                   |             |                |
| Sand                      |       |              | 120  | 130    |                   |             |                |
| Blue Slate                |       |              | 130  | 145    |                   |             |                |
| Red Rock                  |       |              | 145  | 265    |                   |             |                |
| Slate                     |       |              | 265  | 305    |                   |             |                |
| Sand - <u>1 1/2 P.H.?</u> |       |              | 305  | 400    | F. Water          | 375'        | 1 bbl. hr.     |
| Slate & Shells            |       |              | 400  | 430    |                   |             |                |
| Sand                      |       |              | 430  | 440    |                   |             |                |
| Red Rock                  |       |              | 440  | 470    |                   |             |                |
| Slate & Shells            |       |              | 470  | 525    |                   |             |                |
| Red Rock                  |       |              | 525  | 550    |                   |             |                |
| Slate                     |       |              | 550  | 580    |                   |             |                |
| Sand - <u>1 1/2 P.H.?</u> |       |              | 580  | 615    | F. Water          | 600'        | 1 bbl. hr.     |
| Slate & Shells            |       |              | 615  | 668    |                   |             |                |
| Sand                      |       |              | 668  | 700    |                   |             |                |
| Slate & Shells            |       |              | 700  | 725    |                   |             |                |
| Red Rock                  |       |              | 725  | 775    |                   |             |                |
| Slate & Shells            |       |              | 775  | 787    |                   |             |                |
| Red Rock                  |       |              | 787  | 850    |                   |             |                |
| Slate & Shells            |       |              | 850  | 900    |                   |             |                |
| Red Rock                  |       |              | 900  | 943    |                   |             |                |
| Slate & Shells            |       |              | 943  | 990    |                   |             |                |
| Sand                      |       |              | 990  | 1025   |                   |             |                |
| Slate & Shells            |       |              | 1025 | 1055   |                   |             |                |
| Red Rock                  |       |              | 1055 | 1075   |                   |             |                |
| Slate & Shells            |       |              | 1075 | 1105   |                   |             |                |
| Sand                      |       |              | 1105 | 1165   | S. Water          | 1140        | 1 1/2 bbl. hr. |
| Slate & Shells            |       |              | 1165 | 1240   |                   |             |                |
| Sand - <u>Salt Sand</u>   |       |              | 1240 | 1290   | S. Water          | 1285        | 5 bbl. hr.     |
| Slate & Shells            |       |              | 1290 | 1365   |                   |             |                |
| Sand - <u>Salt Sand</u>   |       |              | 1365 | 1405   | S. Water          | 1370        | 1 bbl. hr.     |
| Slate & Shells            |       |              | 1405 | 1595   |                   |             |                |
| Sand - <u>Salt Sand</u>   |       |              | 1595 | 1670   | S. Water          | 1665        | 2 bbl. hr.     |



| Formation       | Color | Hard or Soft | Top <sup>5</sup>                 | Bottom | Oil, Gas or Water | Depth Found  | Remarks |  |
|-----------------|-------|--------------|----------------------------------|--------|-------------------|--------------|---------|--|
| Big Lime        |       |              | 1670                             | 1790   |                   |              |         |  |
| Late & Shells   |       |              | 1790                             | 1875   |                   |              |         |  |
| Lime (Sandy)    |       |              | 1875                             | 1950   |                   |              |         |  |
| Late & Shells   |       |              | 1950                             | 1960   |                   |              |         |  |
| Lime (Gritty)   |       |              | 1960                             | 2000   |                   |              |         |  |
| Late & Shells   |       |              | 2000                             | 2196   |                   |              |         |  |
| Brown Shale     |       |              | 2196                             | 2207   | SLR 2200'         |              |         |  |
| Area Sand       |       |              | 2207                             | 2211   |                   |              |         |  |
| Late & Shells   |       |              | 2211                             | 2960   |                   |              |         |  |
| Lime            |       |              | 2960                             | 3060   |                   |              |         |  |
| Late & Shells   |       |              | 3060                             | 3350   |                   |              |         |  |
| Lime Shells     |       |              | 3350                             | 3356   |                   |              |         |  |
| Brown Shale     |       |              | 3356                             | 3456   |                   |              |         |  |
| Lime            |       |              | 3458                             | 3475   |                   |              |         |  |
| Late & Shells   |       |              | 3475                             | 3660   |                   |              |         |  |
| Brown Shale     |       |              | 3660                             | 3840   |                   |              |         |  |
| White Shale     |       |              | 3840                             | 4140   |                   |              |         |  |
| Brown Shale     |       |              | 4140                             | 4356   | Gas 4319'         | Gas 4/10--1" |         |  |
| Cornefious Lime |       |              | 4356                             | 4460   |                   |              |         |  |
| Risknay Sand    |       |              | 4460                             | 4460   | DIM               |              |         |  |
|                 |       |              |                                  | 4468   | SIM.              |              |         |  |
|                 |       |              |                                  | 4470   | SLR               |              |         |  |
|                 |       |              | Total Depth-----                 |        |                   |              |         |  |
|                 |       |              | 7" & 8" cemented with 550 sacks. |        |                   |              |         |  |
|                 |       |              |                                  | 4356   | 4468              |              |         |  |
|                 |       |              |                                  | 878    | 878               |              |         |  |
|                 |       |              |                                  | 3478   | 3590              |              |         |  |

ement record  
October 20, 1954

475

4356 4468  
878 878  
3478 3590

Date....., 19

APPROVED....., Owner

By.....

(741a)