

C.E. NICHOLSON

Jos. A. Suck

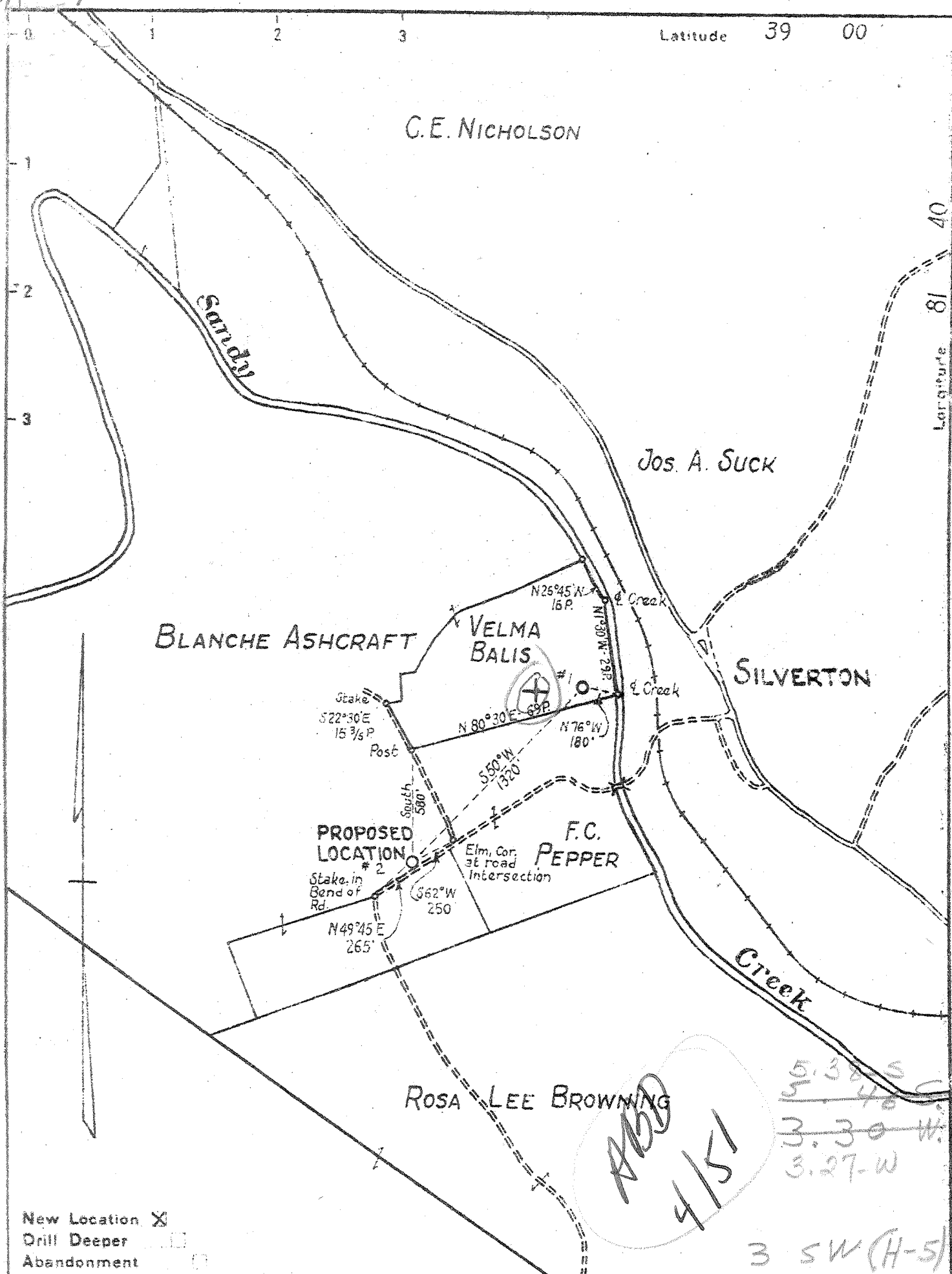
BLANCHE ASHCRAFT

VELMA BALIS

SILVERTON

F.C. PEPPER

ROSA LEE BROWNING



Stake #2  
S22°36'E  
15 3/4 P  
Post

PROPOSED LOCATION #2  
Stake in Bend of Rd.

Elm. Cor. at road intersection

5.38 S  
5.48 W  
3.30 W  
3.27 W  
3 SW (H-5)

ADD  
4/51

- New Location
- Drill Deeper
- Abandonment

Company COLUMBIAN CARBON CO.  
 Address Box 873 CHARLESTON, W.VA.  
 Farm BLANCHE ASHCRAFT ETAL  
 Tract \_\_\_\_\_ Acres 358.5 Lease No. WU 116  
 Well (Farm) No. 2 Serial No. GW-984  
 Elevation (Spirit Level) 615.3  
 Quadrangle RIPLEY-3 S533 W331NW  
 County JACKSON District RAVENSWOOD  
 Engineer C.A. Branham  
 Engineer's Registration No. 683  
 File No. \_\_\_\_\_ Drawing No. \_\_\_\_\_  
 Date 9-30-47 Scale 1" = 660' Silvertown (281)

STATE OF WEST VIRGINIA  
 DEPARTMENT OF MINES  
 OIL AND GAS DIVISION  
 CHARLESTON

WELL LOCATION MAP  
 FILE NO. JAC-569

+ Denotes location of well on United States Topographic Maps, scale 1 to 62,500, latitude and longitude lines being represented by border lines as shown.

- Denotes one inch spaces on border line of original tracing.

DPD, Oniskany

WEST VIRGINIA DEPARTMENT OF MINES  
OIL & GAS DIVISION  
W E L L R E C O R D

Permit No. Jac 569

Gas Well  
CASING & TUBING

Ripley Quad.

Company	Columbian Carbon Company		
Address	Box 873, Charleston, W.Va. 23	16 65#	39'11 Same
Farm	Blanche Ashcraft et al A 358.5	13 3/8 48#	678'11 Bld.
Location	Sandy Creek	10 1/2 40#	1038'1 Pld.
Well No.	2-GW 984 Elev. 615.3 G	8 1/2 24#	1831'5 Same
District	Ravenswood Jackson County	7 22-23#	2175'9 Same
Surface	Blanche Ashcraft et al, Ravenswood, W.Va.		
Mineral	Same	5 3/16 15#	4408'8 Same
Commenced	10-17-47	2 3/8	4497'11 Same
Completed	1-16-48	1-2 tubing cage	
Date shot	1-16-48	Depth 4470' SLM to 4490' SLM	3 1/2 61'9 Same
Open flow	64/10ths W in 3"	Midget B.H. Packer	
Volume	759,000 C.F.	Size 5 1/2 x 7	
Rock Pressure	1300 lbs. 96 hrs.	Depth 4391' SLM	
Fresh Water	160' 1-16" blr; 390' 2 1/2-16" blrs.; S.W. 1120' H.F.	Coal at 415' 48"; 705' 48"; 830' 48"	
	508-530 3 1/2-16" blrs.; S.W. 900' 2-10" blrs.; 1049-62 1-10" Blr.		

Surface	0	23	Coal	1193	1195
Sand	23	50	Sand	1195	1224
Red Rock	50	56	Slate & Shells	1224	1322
Lime	56	70	Sand	1322	1357
Red Rock	70	95	Slate	1357	1383
Slate	95	105	Lime	1383	1412
Sand	105	180	Sand	1412	1418
Red Rock	180	187	Slate	1418	1428
Sand	187	200	Sand	1428	1445
Slate	200	210	Slate	1445	1490
Red Rock	210	232	Lime	1490	1502
Slate & Shells	232	250	Slate	1502	1508
Red Rock	250	258	Little Lime	1508	1525
Sand	258	268	Slate - P. C. W. E. - ?	1525	1532
Red Rock	268	274	Big Lime	1532	1658
Slate	274	315	Slate	1658	1660
Red Rock	315	360	Sand - Keener } 340	1660	1670
Sand - 1 <sup>st</sup> P.H. Sand - ?	360	415	Slate & Shells	1670	1707
Coal	415	419	Sand - Injun - ?	1707	1795
Slate	419	508	Lime	1795	1805
Sand - 2 <sup>nd</sup> P.H. Sand - ?	508	530	Slate & Shells	1805	1814
Slate	530	540	Lime 1818 DLM-1819 SLM	1814	1823
Red Rock	540	546	Slate & Shells	1823	2100
Slate	546	563	Black Shale - Cape Co. sh.	2100	2121
Red Rock	563	595	Berea Grit 2121 DLM-2121 SLM	2128	2170
Sand	595	614	Slate	2128	2176
Slate	614	626	Lime Shells	2176	3290
Red Rock	626	655	Slate & Shells	2176	3375
Slate	655	664	Brown Shale - 441	3290	3460
Shell	664	668	Slate & Shells	3375	3525
Slate & Shells	668	705	White Slate	3460	3775
Coal	705	709	Brown Shale	3525	3860
Slate & Shells	709	753	Slate & Shells	3775	4165 4378 SLM
Red Rock	753	761	White Slate	3860	4382 DLM
Slate & Shells	761	780	Brown Shale 4395 DLM-4391' SLM	4378' SLM	4473 DLM
Red Rock	780	788	Corniferous Lime - 442	4470 SLM	4490 4470 SLM
Slate & Shells	788	830	Oriskany Sand	4490	4550 T.D. 485
Coal	830	834	Lime - Held	4490	
Slate & Shells	834	886	Gas 1709-14 Show; 1742-44 show; 2122' 5/10		
Sand	886	948	W 2" 94 M blow down to 3/10 W 2" 73 M;		
Slate & Shells	948	966	3730' show; Oil 4409' show; Gas Pays 4480-		
Sand	966	1006	81' 33/10 W 2" 242 M		
Slate	1006	1025	Cement record: 10-26-47 13 3/8" csg. not		
Sand	1025	1039	aquagelled. 10-31-47 10 1/2" csg. ran 16 sacks		
Slate	1039	1049	aquagel-cir. and rets. 11-26-47 8 5/8"		
Sand	1049	1062	csg. ran 22 bags aquagel through tbg. to	4550	
Slate & Shells	1062	1083	float pipe in. Cir. and Rets. 12-4-47	2128	
Sand	1083	1095	SLM 7" csg. ran on steel show-no aquagel.	2922	
Slate 1087' DLM-1095 SLM	1095	1116	1-5-48 5 1/2" csg. aquagelled through 2"	expl	
Sand	1116	1134	tbg. with 50 sacks aquagel. C.C.Co. Crew	fty.	
Slate	1134	1145			
Sand	1145	1176			
Slate	1176	1193			

4378	4470	4490
615	615	615
3763	3855	3875