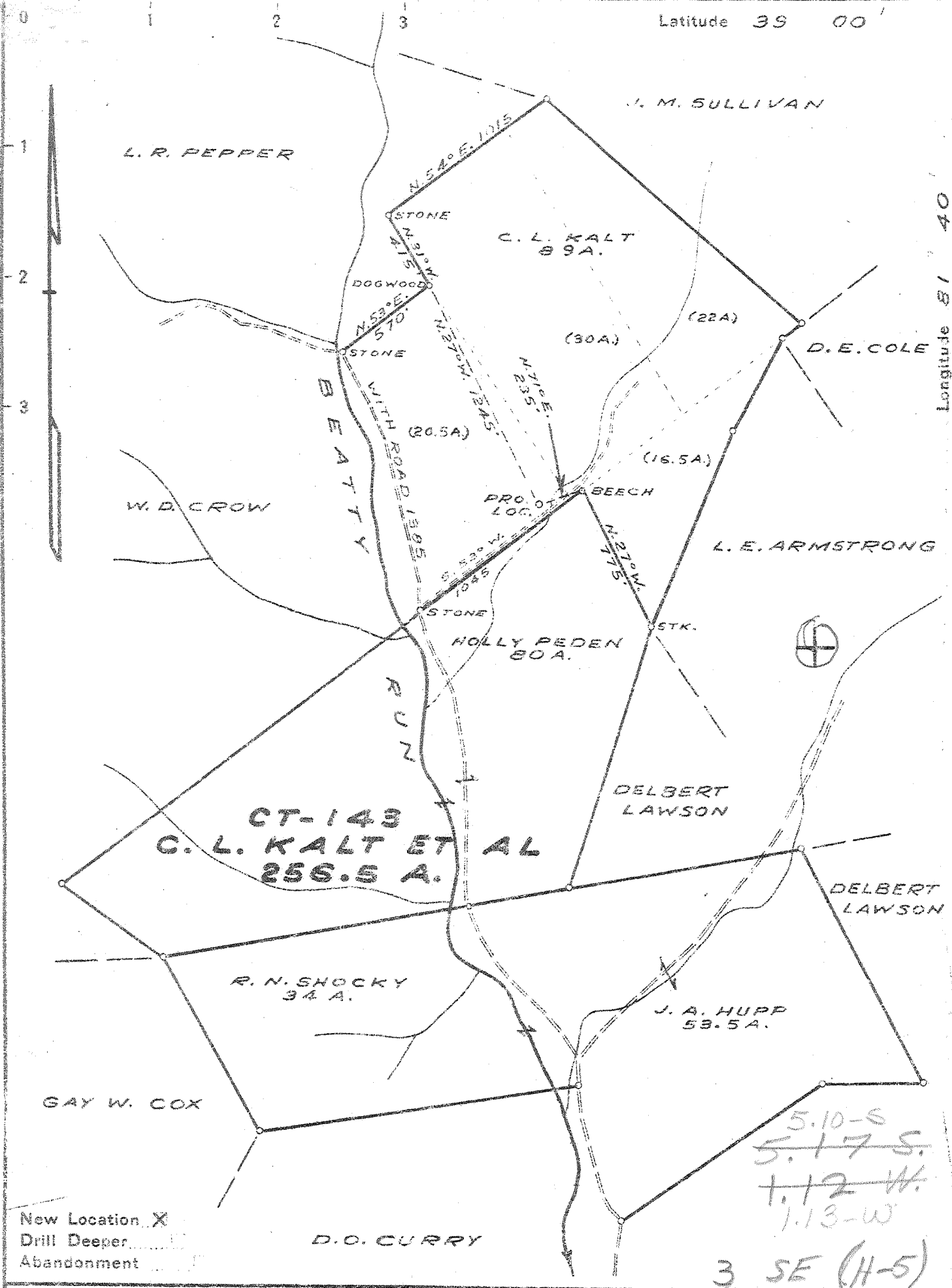


Latitude 39 00'

Longitude 81 40'



New Location X
 Drill Deeper
 Abandonment

D.O. CURRY

5.10-S
~~5.17 S.~~
~~1.12 W.~~
 1.13-W
 3 SE (H-5)

Company COLUMBIAN CARBON CO.
 Address CHARLESTON W.VA.
 Farm C. L. KALT ET AL
 Tract _____ Acres 256.5 Lease No. CT-143
 Well (Farm) No. 1 Serial No. GW-927
 Elevation (Spirit Level) 713.2
 Quadrangle RIPLEY NW 3-500-113
 County JACKSON District RAVENSWOOD
 Engineer J. M. Seel
 Engineer's Registration No. 772
 File No. _____ Drawing No. 402
 Date OCT. 4, 1946 Scale. 1" = 660'

STATE OF WEST VIRGINIA
 DEPARTMENT OF MINES
 OIL AND GAS DIVISION
 CHARLESTON

WELL LOCATION MAP
 FILE NO. JAC-538

+ Denotes location of well on United States Topographic Maps, scale 1 to 62,500, latitude and longitude lines being represented by border lines as shown.
 - Denotes one inch spaces on border line of original tracing.

Deep Well

WEST VIRGINIA DEPARTMENT OF MINES
OIL & GAS DIVISION
W E L L R E C O R D

Permit No. Jac 538

Dry Hole
CASING & TUBING

| | | |
|--------------|--|-----------------------|
| Ripley Quad. | Columbian Carbon Company | |
| Company | Box 873, Charleston 23, W.Va. | 16" 69# 18' same |
| Address | C.L. Kalt et al Acres 256.5 | 13 3/8 48# 647'9 pld. |
| Farm | Beatty Run | 10 1/2 40# 1178'7 pld |
| Location | l-GW-927 Elev. 713.2 G | 8 1/2 24# 2049'5 pld. |
| Well No. | Ravenswood Jackson County | 7 23# 4787'8 same |
| District | C.L. Kalt et al, Crow Summit, W.Va. | |
| Surface | Same for further addresses contact C. C. Co. | |
| Mineral | 10-30-46 | Midget B.H. Packer |
| Commenced | 2-3-47 | Size 7" |
| Completed | | Depth 4754 SLM |
| Not shot | | |
| Volume | Dry Hole | |
| Fresh Water | 30' 1-16" blr. 1 hr; 320' 5-16" blr. 1 hr | |
| | 540' 5-16" blr. 1 hr. | Coal at 594' 48" |
| Salt Water | 1130' 5-13" blrs. 1 hr; 1308' H.F. | |

| | | | |
|-------------------------|------|------|---|
| Clay | 0 | 10 | CEMENT RECORD: 11-8-46 13 3/8" casing Ran 17 sacks aquagel and 1 bale fibertex, Circulation 550'. C.C. Co. Crew |
| Sand | 10 | 25 | |
| Red Rock | 25 | 90 | 11-14-46 10 1/2" casing. Ran 21 sacks aquagel and 1 bale fibertex. Pipe floated in, C.C.Co. Crew |
| Slate | 90 | 135 | |
| Sand | 135 | 153 | 12-14-46 8 5/8" casing- ran 24 sacks aquagel and 1 bale fibertex. Returns O.K. C.C.Co. Crew |
| Red Rock | 153 | 285 | |
| Sand | 285 | 330 | 1-15-47 7" casing. Aquagelled. C.C.Co. Crew |
| Slate | 330 | 360 | |
| Sand | 360 | 390 | |
| Slate | 390 | 430 | |
| Red Rock | 430 | 475 | |
| Slate | 475 | 550 | |
| Sand | 550 | 594 | |
| Coal | 594 | 598 | |
| Sand | 598 | 615 | |
| Slate | 615 | 680 | |
| Sand | 680 | 720 | |
| Slate | 720 | 750 | |
| Red Rock | 750 | 870 | |
| Slate | 870 | 920 | |
| Red Rock | 920 | 1000 | |
| Slate | 1000 | 1050 | |
| Sand | 1050 | 1220 | |
| Slate | 1220 | 1290 | |
| Sand | 1290 | 1314 | |
| Slate | 1314 | 1313 | |
| Sand | 1313 | 1395 | |
| Slate | 1395 | 1420 | |
| Sand | 1420 | 1435 | |
| Slate | 1435 | 1464 | |
| Slate | 1464 | 1478 | |
| Sand | 1478 | 1500 | |
| Slate | 1500 | 1530 | |
| Sand | 1530 | 1564 | |
| Slate | 1564 | 1574 | |
| Sand | 1574 | 1587 | |
| Slate | 1587 | 1590 | |
| Sand | 1590 | 1789 | |
| Big Lime | 1789 | 1832 | |
| Sand - Injun | 1832 | 2025 | |
| Slate & Shells | 2025 | 2161 | |
| Black Lime | 2161 | 2189 | |
| Slate & Shells | 2189 | 3875 | |
| Shale | 3875 | 3963 | |
| Slate & Shells | 3963 | 3930 | |
| Shale | 3930 | 4000 | |
| Slate & Shells | 4000 | 4540 | |
| Shale | 4540 | 4722 | |
| Lime, Corniferous - 463 | 4722 | DLM | |
| | 4742 | SLM | 4843 SLM |
| Oriskany Sand | 4843 | SLM | 4887 |
| Black Lime - Held | 4887 | | 4932 |
| Total Depth | | | 4932 |

4742 4843 4887
 716 716 716

 4026 4127 4171

(485)