

New Location X
 Drill Deeper
 Abandonment

4 NE (H-S)

1.41-S
~~1.43-S~~
~~0.40-W~~
 0.39-W

Company	<u>United Carbon Company</u>		
Address	<u>Charleston, W. Va.</u>		
Farm	<u>T.A. Wilcox</u>		
Tract	Acres <u>90</u>	Lease No.	<u>3757</u>
Well (Farm) No.	<u>One</u>	Serial No.	<u>1397</u>
Elevation (Spirit Level)	<u>596.2 Gr.</u>		
Quadrangle	<u>Ripley N.W. WC</u>		
County	<u>Jackson</u>	District	<u>Ravenswood</u>
Engineer	<u>E. Withrow</u>		
Engineer's Registration No.			
File No.	Drawing No.		
Date	<u>June 12, 1946</u> Scale <u>1" = 660'</u>		

STATE OF WEST VIRGINIA
 DEPARTMENT OF MINES
 OIL AND GAS DIVISION
 CHARLESTON

WELL LOCATION MAP
 FILE NO. JAC-527

+ Denotes location of well on United States Topographic Maps, scale 1 to 62,500, latitude and longitude lines being represented by border lines as shown.
 - Denotes one inch spaces on border line of original tracing.

No. Samples 6-6-1-22

Deep Well

WEST VIRGINIA DEPARTMENT OF MINES
OIL & GAS DIVISION
WELL RECORD

Permit No. Jac 527
Ripley Quad.

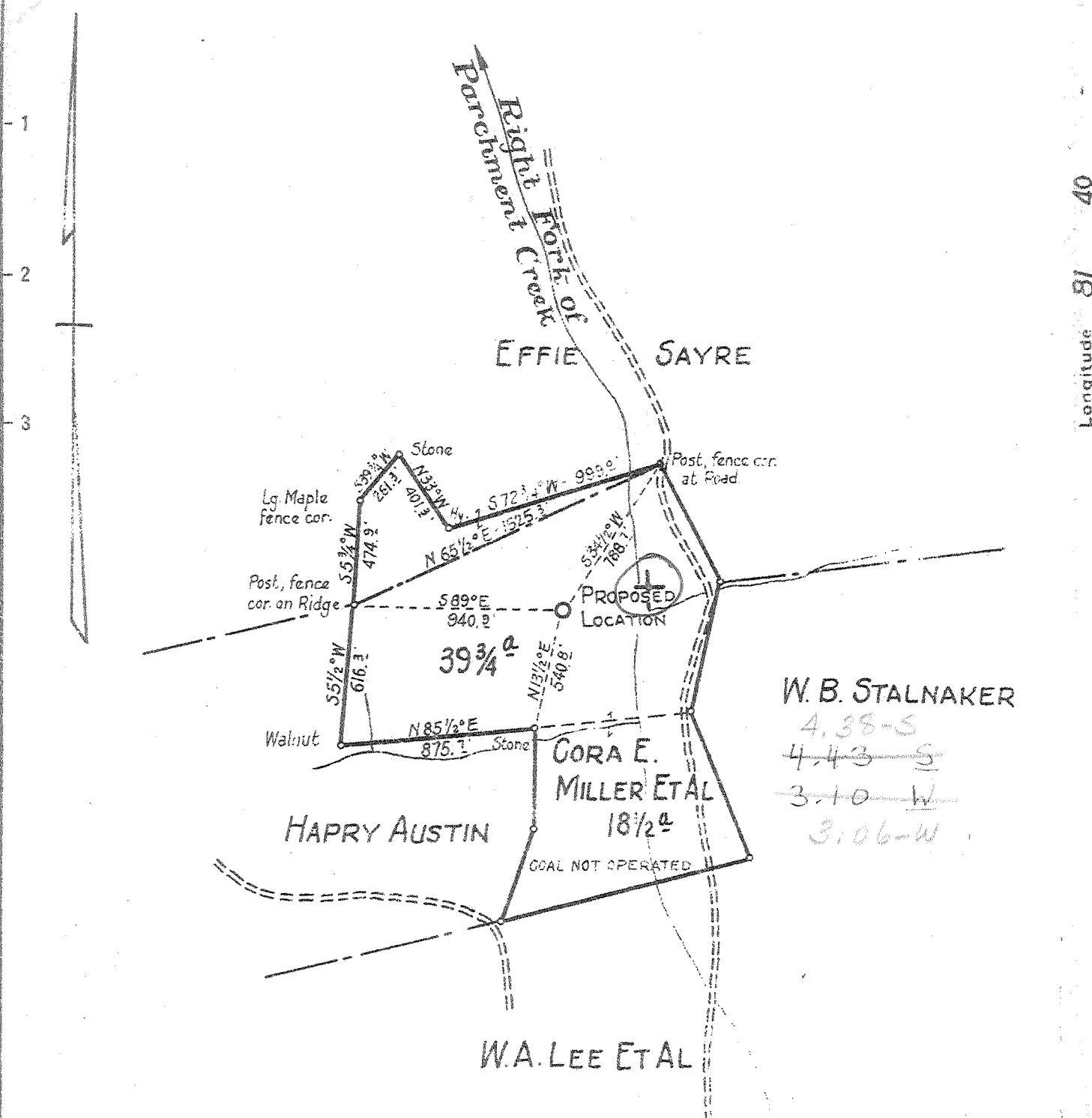
Gas Well
CASING & TUBING

Company	United Carbon Company			
Address	Box 1913, Charleston 27, W. Va.	16	70'	70'
Farm	T.A. Wilcox et al A 90	10 1/2	517'	
Location	Sandy Creek	8 5/8	1203'	1203'
Well No.	1(1397) Elev. 601.2'	7 OD	1978'	1978'
District	Ravenswood Jackson County	5 1/2	4680'	4680'
Surface		2 3/8 OD	4814'	4814'
Mineral	T.A. Wilcox et al, Crow Summit, W. Va.			
Commenced	June 13, 1946		Casing cemented 7"	
Completed	Sept. 24, 1946		5 1/2 110'	9-12-46
Date shot	9-24-46 Depth 4777 to 4818 with 60 qts. glycerine			
Volume	696,000 C.F.			
Rock Pressure	1325 lbs. 24 hrs.			
Salt Water	1535' H.F.			

Sand		0	70	
Slate	Wh	70	140	
Red Rock		140	160	
Sand		160	180	
Red Rock		180	210	
Slate	Wh	210	260	
Red Rock		260	270	
Slate		270	450	
Sand		450	510	
Slate		510	620	
Red Rock		620	640	
Slate	Wh	640	700	
Sand		700	730	
Red Rock		730	745	
Slate	Wh	745	1150	
Sand		1150	1165	
Slate		1165	1195	
Sand		1195	1455	
Slate		1455	1495	
Sand - Salt Sand - ?		1495	1600	
- Pencil Cave		1600	1605	
- Big Lime		1605	1765	
- Sand - Injura		1765	1900	
Slate & Shells		1900	2240	
- Shale - Coffee Sh Br		2240	2250	
- Berea Sand		2250	2275	
Slate & Shells		2275	3715	
Shale	Br	3715	3835	
Slate & Shells		3835	4400	Gas 3840-3845
Shale	Br	4400	4670	
- Corniferous Lime - 463		4670	4776	
- Oriskany Sand		4776	4822	Gas 4779-4784 207 MCF
- Lime		4822	4828	
Sand		4828	4843	
Lime		4843	4843	
TOTAL DEPTH			4843	
Filled back to			4822	

485

4670 4776 4843



W. B. STALNAKER
~~4.38-S~~
~~4.43-S~~
~~3.10-W~~
 3.06-W

New Location
 Drill Deeper
 Abandonment

Company WEST VIRGINIA GAS CORPORATION
 Address P.O. Box 1433 CHARLESTON 25, W. VA.
 Farm CORA E. MILLER ETAL
 Tract _____ Acres 58 1/4 Lease No. 323
 Well (Farm) No. 1 Serial No. 542
 Elevation (Spirit Level) 933.77'
 Quadrangle KENNA N.W. 3 S4.30 W3.13
 County JACKSON District RIPLEY
 Engineer W.S. GRAVELY
 Engineer's Registration No. _____
 File No. _____ Drawing No. _____
 Date JUNE 14, 1946 Scale 1" = 660'

STATE OF WEST VIRGINIA
 DEPARTMENT OF MINES
 OIL AND GAS DIVISION
 CHARLESTON

WELL LOCATION MAP
 FILE NO. JAC-528

+ Denotes location of well on United States Topographic Maps, scale 1 to 62,500, latitude and longitude lines being represented by border lines as shown.

- Denotes one inch spaces on border line of original tracing.

Deep Well.

WEST VIRGINIA DEPARTMENT OF MINES
OIL & GAS DIVISION
W E L L R E C O R D

Permit No. Jac 528
Kenna N.W. Quad.

Dry Hole
casing & tubing

Company	West Virginia Gas Corp.			
Address	P.O. Box 1433, Charleston 25, W.Va.	16	54	54
Farm	Cora E. Miller Acres 58½	13 3/8	778'6	-
Location	Right Fork of Parchment Creek	10½	1144	-
Well No.	One Serial 542 Elev. 933.77	8 5/8	2221	2221
District	Ripley Jackson County	7	5081	5081
Surface	F.D. Austin, Given, W.Va.			
Mineral	Cora E. Miller, Given, W.Va.			
	W.H. O'Dell, 504 Columbia Ave., Charleston, W.Va.			
Commenced	July 6, 1946			
Completed	Oct. 24, 1946			
Volume	Dry			
Fresh Water	215' 6 blrs. per hr.			
Salt Water	1385' Some; 1435			

Casing cemented:
11 bags aquagel behind
13" 7 bags aquagel
behind 10"; 15 bags
aquagel behind 8 5/8"
12 bags cement behind
7"

Coal at 610' 36"
1243' 48"; 1385' 60"

White Clay	0	26	Sand	1172	1238
Red Clay	26	35	Slate	1238	1243
Sand Stone	35	57	Coal	1243	1247
Red Rock	57	77	Sand	1247	1285
Blue Sand stone	77	90	Slate	1285	1317
Red Rock	90	94	Sand	1317	1375
Blue Mud	94	98	Slate	1375	1385
Red Rock	98	107	Coal	1385	1400
Slate	107	128	Salt Wand	1400	1450
Lime	128	145	Lime	1450	1471
Red Rock	145	210	Slate	1471	1488
Sandstone	210	215	Lime	1488	1500
Blue Mud	215	220	Slate	1500	1574
Blue Rock	220	230	Lime	1574	1594
Lime	230	245	Sand	1594	1607
Red Rock	245	285	Slate	1607	1705
Blue Rock	285	290	Lime	1705	1729
Red Rock	290	295	Sand - <i>Sack Sand</i>	1729	1975
Sandstone	295	311	Slate	1975	1980
Red Rock	311	320	Lime - <i>Big Lime</i>	1980	2150
Sand	320	330	Slate - <i>340</i>	2150	2154
Lime	330	350	Lime	2154	2166
Red Rock	350	360	Big Injun Sand	2166	2199
Sandstone	360	370	Slate	2199	2203
Red Rock	370	415	Sand - <i>Squaws</i>	2203	2234
Sand	415	445	Lime	2234	2246
Lime	445	457	Slate	2246	2646
Red Rock	457	493	Berea	2646	2670
Slate	493	537	Slate	2670	3545
Lime	537	546	Brown Shale	3545	3595
Sand	546	588	Slate & Shells	3595	3685
Slate	588	610	Brown Shale	3685	3725
Coal	610	613	Slate & Shells	3725	3885
Sand	613	623	Brown Shale	3885	4000
Lime	623	645	Slate & Shells	4000	4125
Slate & Shells	645	672	Brown Shale	4125	4435
Lime	672	712	Slate & Shells	4435	4820
Slate	712	727	Brown Shale	4820	5040
Lime	727	749	Corniferous Lime - <i>463</i>	5040	5167
Red Rock	749	757	Oriskany Sand	5167	5197
Lime	757	770	Black Lime - <i>held</i>	5197	5213
Red Rock	770	806	Total Depth	<u>485</u>	5213
Sand	806	845			
Red Rock	845	876	Gas 2172 show no test		
White Slate	876	904	Gas 2648 show		
Sand	904	945	Gas 4220 No test		
Black Slate	945	1015	Shale and Berea 2/10 W 1"		
Red Rock	1015	1038	Gas 5167-5172 smell		
Lime Shell	1038	1043	Steel Line run 5177 for check		
Slate & Shells	1043	1136			
Lime, Gritty	1136	1153	To be plugged and abandoned.		
Black Slate	1153	1172			