

LATITUDE 38°52'30"

GAS WELL #7317 (47-035-00513)

BARBARA ANN McDONALD TM-34 PAR 46

ROMIE GLEN BURGESS (SURVIVORSHIP) TM-34 PAR 49

RAVENSWOOD DIST. RIPLEY DIST.

DIST. WV CO. RT. 21/19 LINE

TO PARKERSBURG

0.985 1.380

ROGER DUANE SIMPKINS & STEVEN LEE SIMPKINS TM-4 PAR 4

RADIO TOWER

10" DBL NY In-Fence Corner In RTW

GAS WELL #7287 (47-035-00523)

GAS WELL #7319

BILLIE IRENE ADAMS & HAYWARD CARL ADAMS, JR. DB 293 PG 413 TM-4 PAR 6

R. C. STARCHER, HRS. TM-8 PAR 12

NOTES: This Map Is For Well Location Only & Does Not Represent A Complete Property Survey. Location Determined By Differential GPS

(+) DENOTES LOCATION OF WELL ON UNITED STATES TOPOGRAPHIC MAPS (7 1/2)

FILE NO. DRAWING NO. 7319 SCALE 1" = 400' MINIMUM DEGREE OF ACCURACY 1/200 PROVEN SOURCE OF ELEVATION EXISTING WELL CONCRETE PAD

I THE UNDERSIGNED, HEREBY CERTIFY THAT THIS PLAT IS CORRECT TO THE BEST OF MY KNOWLEDGE AND BELIEF AND SHOWS ALL THE INFORMATION REQUIRED BY LAW AND THE REGULATIONS ISSUED AND PRESCRIBED BY THE DEPARTMENT OF ENERGY. (SIGNED) R.P.E. L.L.S. 499



WEST VIRGINIA DIVISION OF ENVIRONMENTAL PROTECTION OFFICE OF OIL AND GAS #10 McJUNKIN ROAD NITRO, WEST VIRGINIA 25143-2506



DATE OCTOBER 21, 1997 OPERATOR'S WELL NO. 7319 API WELL NO. 47 035 00518P STATE COUNTY PERMIT

WELL TYPE: OIL GAS X LIQUID INJECTION WASTE DISPOSAL (IF "GAS,") PRODUCTION STORAGE X DEEP SHALLOW LOCATION: ELEVATION 852' WATER SHED Left Fork Of Sycamore Creek DISTRICT Ripley COUNTY Jackson QUADRANGLE Ripley, WV COORDINATES LAT: 38°51'38" LONG: 81°41'33" SURFACE OWNER Billie Irene & Hayward Carl Adams Jr. ACREAGE 53.75 OIL & GAS ROYALTY OWNER Ronald O. Johnson, Et Al. LEASE ACREAGE 61 COAL OWNER John H. Riley, Hrs. LEASE NO. 52360 PROPOSED WORK: DRILL CONVERT DRILL DEEPER REDRILL FRACTURE OR STIMULATE PLUG OFF OLD FORMATION PERFORATE NEW FORMATION OTHER PHYSICAL CHANGE IN WELL (SPECIFY) Well drill in 1954

PLUG AND ABANDON X CLEAN OUT AND REPLUG TARGET FORMATION ESTIMATED DEPTH 5131' NOV 14 1997 WELL OPERATOR COLUMBIA GAS TRANSMISSION CORP DESIGNATED AGENT RICHARD L COTY ADDRESS PO Box 1273, Charleston, WV 25325-1273 ADDRESS PO Box 1273, Charleston, WV 25325-1273

JACKSON COUNTY NAME PERMIT 518

FORM WVA 980

P

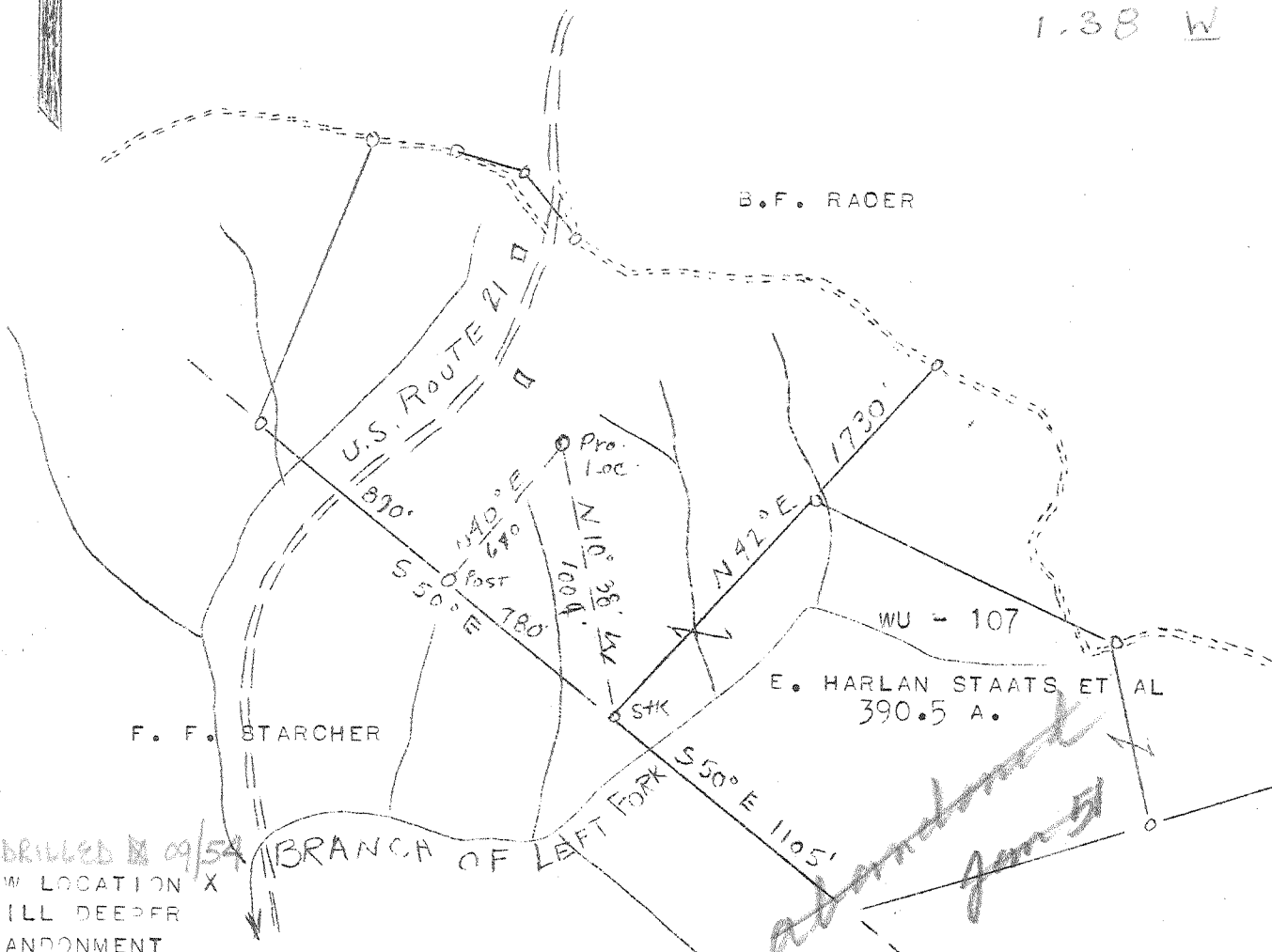
LATITUDE 39° 55'

LONGITUDE 81° 40'

- 1 W.M. RILEY 63 A.
- 2 S.G. STARCHER 40 A.
- 3 S.G. STARCHER 10 A.
- 4 W.M. RILEY 42 A.
- 5 A.W. BOICE 237.5 A.

SKETCH SHOWING TRACTS INCLUDED
IN CONSOLIDATION WU - 107
SCALE 1" = 2640'

(+)
3.85-S
3.90-S
1.38-W



Redrilled 09/54
NEW LOCATION X
DRILL DEEPER
ABANDONMENT

COMPANY COLUMBIAN CARBON CO.
 ADDRESS CHA LESTON, W. VA.
 FARM E HARLAN STAATS ET AL
 TRACT ACRES 390.5 LEASE NO WU-107
 WELL (FARM) NO. 1 SERIAL NO
 ELEVATION (SPIRIT LEVEL) 852-5
 QUADRANGLE RIPLEY 4-390-141 - W
 COUNTY JACKSON DISTRICT RIPLEY
 ENGINEER J. N. SELL
 ENGINEER'S REGISTRATION NO. 772
 FILE NO DRAWING NO. 368
 DATE 3-8-45 SCALE 1" - 660'

STATE OF WEST VIRGINIA
 DEPARTMENT OF MINES
 OIL AND GAS DIVISION
 CHARLESTON

WELL LOCATION MAP

FILE NO. JAC. - 518-W

+ DENOTES LOCATION OF WELL ON UNITED
 STATE TOPOGRAPHIC MAPS, SCALE 1 TO
 62,500, LATITUDE AND LONGITUDE LINES
 BEING REPRESENTED BY BORDER LINES AS
 SHOWN.

- DENOTES ONE INCH SPACES ON BORDER
 LINE OF ORIGINAL TRACING.

9 0 *Starch*

Deep Well



STATE OF WEST VIRGINIA
DEPARTMENT OF MINES
OIL AND GAS DIVISION //

Quadrangle Ripley

Permit No. Jac.-518-R

WELL RECORD

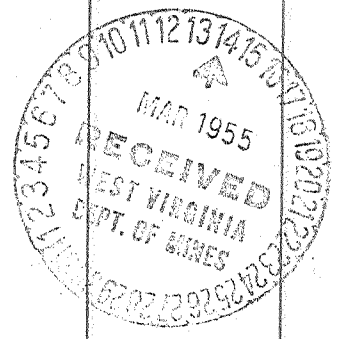
Oil or Gas Well Storage
(KIND)

Company United Fuel Gas
Address Box 1273, Charleston, W. Va.
Farm Vena R. Dye et al #1 Acres 61
Location (waters) Lt. Fk. of Sycamore Creek
Well No. X59-7319 Elev. 852.5
District Ripley County Jackson
The surface of tract is owned in fee by _____
Address _____
Mineral rights are owned by Ralph Riley
1220 E. 6th St.
Address Denver, Colorado
Drilling commenced 9-2-54
Drilling completed 9-24-54
Date Shot _____ From _____ To _____
With _____
Open Flow _____ /10ths Water in _____ Inch
_____ /10ths Merc. in _____ Inch
Volume _____ Cu. Ft.
Rock Pressure _____ lbs. _____ hrs.
Oil _____ bbls., 1st 24 hrs.
Fresh water _____ feet _____ feet
Salt water 1486' feet _____ feet

| Casing and Tubing | Used in Drilling | Left in Well | Packers |
|-------------------|------------------|--------------|----------------|
| Size | | | |
| 16 | | | Kind of Packer |
| 13 | | | |
| 10 | | | Size of |
| 8 1/4 | | | |
| 6 3/8 | | | Depth set |
| 5 3/16 | | | |
| 4 1/2" | <u>4917'</u> | <u>4917'</u> | Perf. top |
| 2 | | | Perf. bottom |
| Liners Used | | | Perf. top |
| | | | Perf. bottom |

CASING CEMENTED _____ SIZE _____ No. Ft. _____ Date _____
COAL WAS ENCOUNTERED AT 732 FEET 24 INCHES
_____ FEET _____ INCHES FEET _____ INCHES
_____ FEET _____ INCHES FEET _____ INCHES

| Formation | Color | Hard or Soft | Top | Bottom | Oil, Gas or Water | Depth Found | Remarks |
|---------------------|-------|--------------|-----|--------|-------------------|-------------|---------|
| Top Soil | | | 0 | 2 | | | |
| Red Clay | | | 2 | 10 | | | |
| Red Rock | | | 10 | 24 | | | |
| Blue Soapstone | | | 24 | 34 | | | |
| Red Rock | | | 34 | 90 | | | |
| Blue Slate | | | 90 | 115 | | | |
| Red Rock | | | 115 | 140 | | | |
| Blue Slate | | | 140 | 150 | | | |
| Red Rock | | | 150 | 230 | | | |
| Blue Slate | | | 230 | 258 | | | |
| Slate & Sand | | | 258 | 270 | | | |
| Red Rock | | | 270 | 325 | | | |
| Blue Slate | | | 325 | 335 | | | |
| Sand | | | 335 | 348 | | | |
| Blue Slate | | | 348 | 354 | | | |
| Red Rock | | | 354 | 364 | | | |
| Blue Slate | | | 364 | 390 | | | |
| Red Rock | | | 390 | 395 | | | |
| Sand | | | 395 | 469 | | | |
| Slate | | | 469 | 479 | | | |
| Sand | | | 479 | 515 | | | |
| Blue Slate | | | 515 | 528 | | | |
| Sand | | | 528 | 545 | | | |
| Slate | | | 545 | 560 | | | |
| Red Rock | | | 560 | 592 | | | |
| Blue Slate | | | 592 | 606 | | | |
| Red Rock | | | 606 | 635 | | | |
| Blue Slate | | | 635 | 670 | | | |
| Sand - 13 Pts. Sand | | | 670 | 732 | | | |
| Coal | | | 732 | 734 | | | |
| Slate | | | 734 | 753 | | | |
| Lime | | | 753 | 756 | | | |
| Slate | | | 756 | 762 | | | |
| Red Rock | | | 762 | 764 | | | |
| Gritty Slate | | | 764 | 776 | | | |
| Sand | | | 776 | 782 | | | |
| Slate | | | 782 | 784 | | | |
| Gritty Lime | | | 784 | 830 | | | |
| Sand | | | 830 | 860 | | | |



| Formation | Color | Hard or Soft | Top | Bottom | Oil, Gas or Water | Depth Found | Remarks |
|----------------------|-------|--------------|------|--------|-------------------|-------------|---------|
| Slate | | | 860 | 867 | | | |
| Red Rock | | | 867 | 882 | | | |
| Slate | | | 882 | 910 | | | |
| Red Rock | | | 910 | 915 | | | |
| Slate | | | 915 | 920 | | | |
| Sand | | | 920 | 967 | | | |
| Red Rock | | | 967 | 987 | | | |
| Slate | | | 987 | 1004 | | | |
| Sand | | | 1004 | 1012 | | | |
| Red Rock | | | 1012 | 1022 | | | |
| Lime | | | 1022 | 1040 | | | |
| Slate | | | 1040 | 1067 | | | |
| Red Rock | | | 1067 | 1086 | | | |
| Lime | | | 1086 | 1095 | | | |
| Red Rock | | | 1095 | 1104 | | | |
| Lime | | | 1104 | 1114 | | | |
| Red Rock | | | 1114 | 1117 | | | |
| Slate | | | 1117 | 1286 | | | |
| Sand | | | 1286 | 1296 | | | |
| Slate | | | 1296 | 1305 | | | |
| Lime Shell | | | 1305 | 1310 | | | |
| Gray Slate | | | 1310 | 1400 | | | |
| Sand | | | 1400 | 1424 | | | |
| Gray Slate | | | 1424 | 1450 | | | |
| Black Slate | | | 1450 | 1483 | | | |
| Salt Sand | | | 1483 | 1588 | | | |
| Black Slate & Shells | | | 1588 | 1770 | | | |
| Sand & Broken Lime | | | 1770 | 1802 | | | |
| Sand - Salt Sand | | | 1802 | 1903 | | | |
| Slate | | | 1903 | 1907 | | | |
| Hard Lime | | | 1907 | 1947 | | | |
| Big Lime | | | 1947 | 2072 | | | |
| Big Injun Sand | | | 2072 | 2117 | | | |
| Black Lime Shells | | | 2117 | 2160 | | | |
| White Slate | | | 2160 | 2167 | | | |
| Lime & Shells | | | 2167 | 2255 | | | |
| Sand Shells | | | 2255 | 2330 | | | |
| Slate | | | 2330 | 2525 | Gas show | 2540' | |
| Brown Shale | | | 2525 | 2535 | | | |
| Berea Grit | | | 2535 | 2557 | Gas | 5052' | |
| Slate & Shells | | | 2557 | 3421 | | | |
| Brown Shale | | | 3421 | 3471 | Gas | 5066-5068 | |
| Slate & Shells | | | 3471 | 3780 | | | |
| Brown Shale | | | 3780 | 3880 | | | |
| Slate & Shells | | | 3880 | 4031 | | | |
| Brown Shale | | | 4031 | 4361 | | | |
| White Slate | | | 4361 | 4700 | | | |
| Brown Shale | | | 4700 | 4822 | | | |
| Dark Shale | | | 4822 | 4947 | | | |
| Corniferous Lime | | | 4947 | 5050 | | | |
| Criskany Sand | | | 5050 | 5095 | | | |
| Gritty Lime | | | 5095 | 5109 | | | |
| Sand | | | 5109 | 5119 | | | |
| Lime | | | 5119 | 5131 | | | |
| Total Depth | | | | 5131 | | | |

485

Date March 11, 19 55

UNITED FUEL GAS CO.

APPROVED

Owner

By

A. R. Furell



STATE OF WEST VIRGINIA
DEPARTMENT OF MINES
OIL AND GAS DIVISION

Rifley

WELL RECORD

Permit No. 140-518

Oil or Gas Well (KIND)

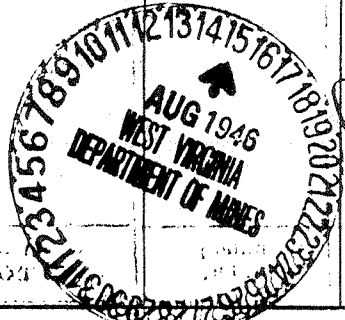
Company Columbian Carbon Company
 Address Box 873, Charleston 23, W. Va.
 Farm 2. Parlan Staats, etal Acres 390.5
 Location (waters) Branch of Left Fork
 Well No. 1-501 Elev. 855.5 DF
 District Rifley County Jackson
 The surface of tract is owned in fee by Stella Bonnell
 Address Rifley, W. Va.
 (Mineral rights are owned by Stella Bonnell)
 Address Parlan Staats, etal
 (For further addresses contact Columbian Carbon)
 Address
 Drilling commenced 7-30-15
 Drilling completed 7-30-15
 Date Shot 7-30-15 From 5050' 31" To 5000' 31 1/4"
 With 100% Gelatin 30%
 Open Flow 2 1/10ths Water in 7" Inch
2 1/10ths Merc. in Inch
 Volume 1105 Cu. Ft.
 Rock Pressure 1105 lbs. 15 hrs.
 Oil 450' 110' 72' bbls., 1st 24 hrs.
 Fresh water 1836' 1810' feet
 Salt water feet

| Casing and Tubing | Used in Drilling | Left in Well | Packers |
|------------------------|-------------------|---------------|------------------------|
| Size | | | |
| 16. <u>3/8" 1 1/2"</u> | <u>10' 3"</u> | <u>10' 3"</u> | Kind of Packer <u></u> |
| 18. <u>3/8" 1 1/2"</u> | <u>7' 2" 1/4"</u> | <u>pulled</u> | Button hole <u></u> |
| 10. <u>3/8" 2 1/2"</u> | <u>11' 7" 6"</u> | <u>pulled</u> | Size of <u>7"</u> |
| 8 1/4" <u>2 1/2"</u> | <u>31' 2" 8"</u> | <u></u> | Depth set <u></u> |
| 6 1/2" <u>2 1/2"</u> | <u>31' 2" 5"</u> | <u></u> | |
| 5 3/8" <u></u> | <u></u> | <u></u> | |
| 3" <u>3/8" 1 1/2"</u> | <u>10' 3"</u> | <u></u> | Perf. top <u></u> |
| 2" <u>3/8" 1 1/2"</u> | <u>10' 3"</u> | <u></u> | Perf. bottom <u></u> |
| Liners Used | | | Perf. top <u></u> |
| <u>5 1/2" 3.75"</u> | <u>217"</u> | <u>217"</u> | Perf. bottom <u></u> |

CASING CEMENTED SIZE No. Ft.
 See reverse side
 COAL WAS ENCOUNTERED AT 732 FEET 2 1/2 INCHES
 FEET INCHES FEET INCHES
 FEET INCHES FEET INCHES

| Formation | Color | Hard or Soft | Top | Bottom | Oil, Gas or Water | Depth Found | Remarks |
|--------------------|-------|--------------|-----|--------|-------------------|-------------|----------|
| Top soil | | | 0 | 2 | | | |
| Red Clay | | | 2 | 10 | | | |
| Red Rock | | | 10 | 24 | | | |
| Blue Soapstone | | | 24 | 34 | | | |
| Red Rock | | | 34 | 90 | | | |
| Blue Slate | | | 90 | 115 | | | |
| Red Rock | | | 115 | 110 | | | |
| Blue Slate | | | 110 | 150 | | | |
| Red Rock | | | 150 | 250 | | | |
| Blue Slate | | | 250 | 253 | | | |
| Slate & Sand | | | 252 | 270 | | | |
| Red Rock | | | 270 | 325 | | | |
| Blue Slate | | | 325 | 335 | | | |
| Sand | | | 335 | 345 | | | |
| Blue Slate | | | 345 | 354 | | | |
| Red Rock | | | 354 | 364 | | | |
| Blue Slate | | | 364 | 395 | | | |
| Red Rock | | | 390 | 395 | | | |
| Sand | | | 395 | 439 | F. water | 150' | no drill |
| Slate | | | 439 | 449 | F. water | 140' | 3 hrs. 1 |
| Sand | | | 449 | 515 | | | |
| Blue Slate | | | 515 | 529 | | | |
| Sand | | | 523 | 515 | | | |
| Slate | | | 515 | 560 | | | |
| Red Rock | | | 560 | 580 | | | |
| Blue Slate | | | 592 | 606 | | | |
| Red Rock | | | 606 | 635 | | | |
| Blue Slate | | | 635 | 670 | | | |
| Sand | | | 670 | 732 | | | |
| Coal | | | 732 | 734 | F. water | 721' | 7 hrs. |
| Slate | | | 734 | 753 | | | |
| Line | | | 753 | 756 | | | |
| Slate | | | 756 | 762 | | | |
| Red Rock | | | 762 | 764 | | | |
| Gritty Slate | | | 764 | 776 | | | |
| Sand | | | 776 | 782 | | | |
| Slate | | | 782 | 784 | | | |
| Gritty <u>110'</u> | | | 784 | 1130' | | | |

POOR COPY



Handwritten signature

| Formation | Color | Hard or Soft | Top | Bottom | Oil, Gas or Water | Depth Found | Remarks |
|----------------------|---|--------------|-----------|-----------|-------------------|-------------|---------|
| Sand | | | 830 | 860 | | | |
| Slate | | | 860 | 867 | | | |
| Red Rock | | | 867 | 892 | | | |
| Slate | | | 882 | 910 | | | |
| Red Rock | | | 910 | 915 | | | |
| Slate | | | 915 | 920 | | | |
| Sand | | | 920 | 967 | | | |
| Red Rock | | | 967 | 987 | | | |
| Slate | | | 987 | 1004 | | | |
| Sand | | | 1004 | 1012 | | | |
| Red Rock | | | 1012 | 1022 | | | |
| Lime | | | 1022 | 1040 | | | |
| Slate | | | 1040 | 1067 | | | |
| Red Rock | | | 1067 | 1086 | | | |
| Lime | | | 1086 | 1095 | | | |
| Red Rock | | | 1095 | 1104 | | | |
| Lime | | | 1104 | 1114 | | | |
| Red Rock | | | 1114 | 1117 | | | |
| Slate | | | 1117 | 1286 | | | |
| Sand | | | 1286 | 1288 | | | |
| Slate | | | 1296 | 1305 | | | |
| Lime Shell | | | 1305 | 1310 | | | |
| Gray Slate | | | 1310 | 1350 | | | |
| Sand | | | 1350 | 1384 | | | |
| Gray Slate | | | 1384 | 1424 | | | |
| Black Slate | | | 1424 | 1450 | | | |
| Salt Sand | | | 1450 | 1483 | | | |
| Black Slate & Shells | | | 1483 | 1533 | | | |
| Sand & Broken Lime | | | 1533 | 1770 | | | |
| Sand | | | 1770 | 1802 | | | |
| Slate | | | 1802 | 1903 | | | |
| Hard Lime | | | 1903 | 1907 | | | |
| Big Lime | | | 1907 | 1947 | | | |
| Big Injun Sand | | | 1947 | 2072 | | | |
| Black Lime Shells | | | 2072 | 2117 | | | |
| White Slate | | | 2117 | 2160 | | | |
| Lime & Shells | | | 2160 | 2167 | | | |
| Sand Shells | | | 2167 | 2255 | | | |
| Slate | | | 2255 | 2330 | | | |
| Brown Shale | Cojol | | 2330 | 2525 | | | |
| Brown Grit | | | 2525 | 2535 | | | |
| Slate & Shells | | | 2535 | 2557 | | | |
| Brown Shale | | | 2557 | 3121 | | | |
| Slate & Shells | | | 3121 | 3471 | | | |
| Brown Shale | | | 3471 | 3780 | | | |
| Slate & Shells | | | 3780 | 3880 | | | |
| Brown Shale | | | 3880 | 4031 | | | |
| White Slate | | | 4031 | 4361 | | | |
| Brown Shale | | | 4361 | 4700 | | | |
| Dark Shale | | | 4700 | 4822 | | | |
| Corniferous Lime | | | 4822 | 4947 SLM | | | |
| Oriskany Sand | | | 4947 SLM | 5050 SLM | | | |
| Gritty Lime | | | 5050 SLM | 5095 | | | |
| Sand | | | 5095 | 5109 | | | |
| Lime | | | 5109 | 5119 | | | |
| | | | 5119 | 5131 SLM | | | |
| TOTAL DEPTH | | | 5125' SLM | 5131' SLM | | | |
| CEMENT RECORD | | | | | | | |
| 5-6-16 | 13-3/8" casing. Ran 13" casing at 748' SLM with 19 sacks Aquagel and 50# Fibertex. Casing locked - pulled and reran at 784' SLM with 19 more sacks Aquagel and 50# Fibertex. Circulation while mixing returns 610' Columbian Carbon Crew. | | | | | | |
| 5-21-16 | 10" casing - ran 31 sacks Aquagel and 50# Fibertex. Circulation while mixing. Returns 1260' Columbian Carbon Company Crew. | | | | | | |
| 6-11-16 | 8-5/8" casing. Ran 20 sacks Aquagel and 50# Fibertex. Circulation while mixing. Returns 1475' Columbian Carbon Crew. | | | | | | |
| 7-18-16 | 7" casing. Ran 50 sacks Aquagel and 50# Fibertex. Circulation and returns at 2810' Columbian Carbon Company Crew. | | | | | | |

S. water

1350'

hole full

S. water

1310'

hole full

1000

show

GAS PAYS: 5052' 1/10 W. 7" 22# 0000
5062-64' 7/10 W. 7" 22# 11200
5066-68' 9/10 W. 7" 22# 129500

BT

DEVELOPMENT OF WELLS

August 11,

Date

194

Columbian Carbon Company

APPROVED

O. W. Van Patten, Sup't

Own

By

(Title)

Ripley

Formerly F-20463

ELEV. 853-L

COMPLETION REPORT

X-59
NO. 7319

FARM E. H. Staats, et al

MAP SQ. 58-93

WELL OWNERS United Fuel Gas Company (Columbian Carbon Co.)

DISTRICT Ripley COUNTY Jackson STATE W. Va.

PERMIT NO. 518 TOTAL DEPTH 5131' COMPLETED 7-29-46

OPEN FLOW 2,443

M. C. F.

Oriskany

R. P.

INJUN

SHALE

Cornif. 4948-5050

MAXON

BEREA

Oriskany 5050-5119

BIG LIME

REMARKS: Gas 5056-5068'. Shot 7-30-46 with 400# Gel. from 5050-5090'