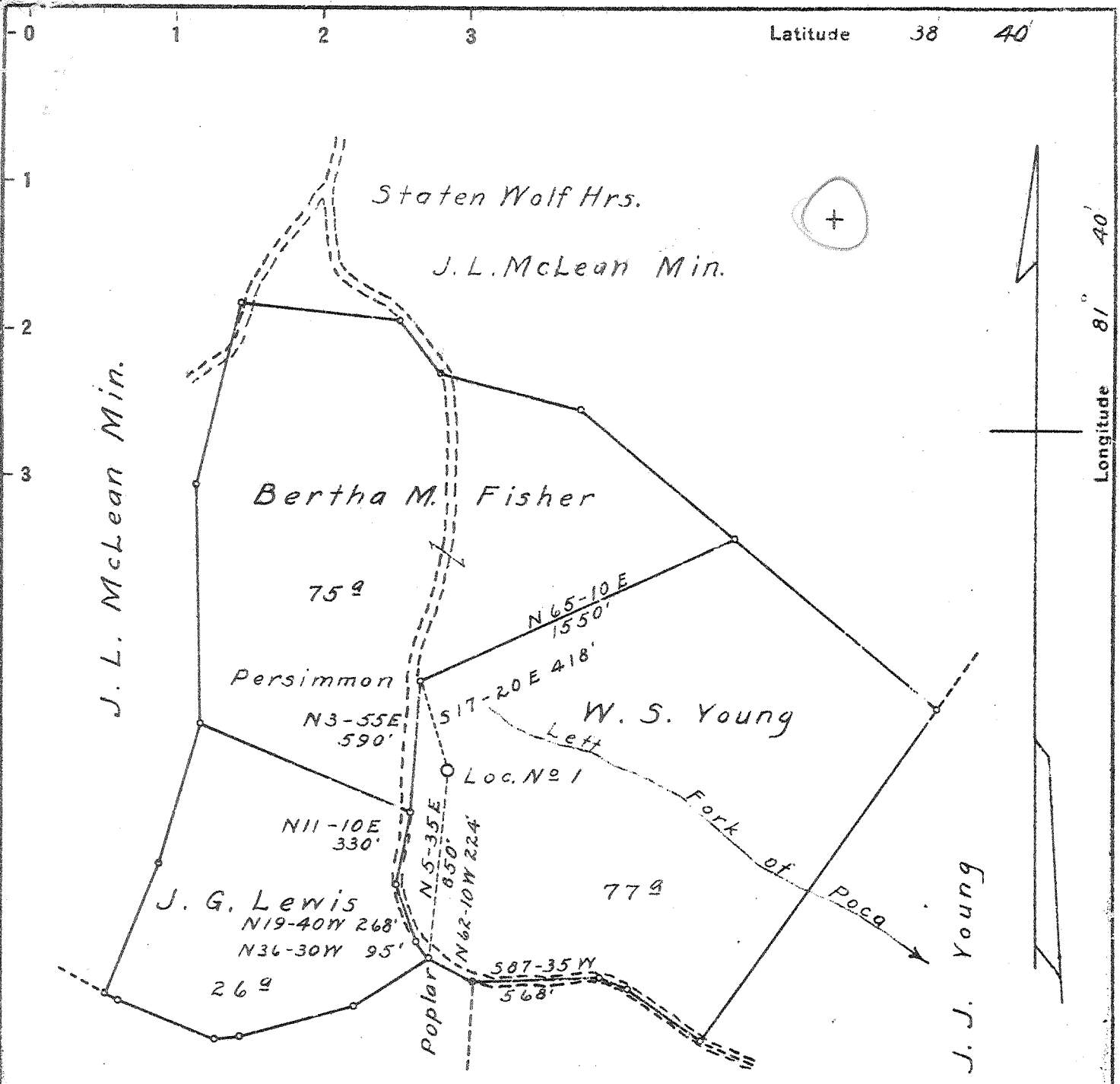


P



W. H. Boggess

Ona D. Lewis

1.42-S
~~1.45S~~
~~1.9W~~
 1.89-W

abandoned
 Oct. 47

#1
O

New Location...
 Drill Deeper...
 Abandonment...

Company United Carbon Company
 Address Charleston, W. Va.
 Farm W. S. Young et al
 Tract _____ Acres 178 Lease No. 2457
 Well (Farm) No. 1 Serial No. 1121
 Elevation (Spirit Level) 988.71
 Quadrangle Kenna - WC
 County Jackson District Ripley
 Engineer E. G. Withrow
 Engineer's Registration No. _____
 File No. _____ Drawing No. _____
 Date March 8, 1943 Scale 1" = 60'

STATE OF WEST VIRGINIA
 DEPARTMENT OF MINES
 OIL AND GAS DIVISION
 CHARLESTON

WELL LOCATION MAP
 FILE NO. JAC-444

+ Denotes location of well on United States Topographic Maps, scale 1 to 62,500, latitude and longitude lines being represented by border lines as shown.
 - Denotes one inch spaces on border line of original tracing.

WEST VIRGINIA DEPARTMENT OF MINES
OIL & GAS DIVISION
W E L L R E C O R D

Permit No. Jac 444			Gas Well
Kenna Quad.			CASING & TUBING
Company	United Carbon Co.		
Address	Box 1913, Charleston 27, W.Va.	16 (Wood)	12'
Farm	W.S. Young et al Across 178	13 3/8	790 0
Location	Left Fork of Poca	10 1/2	1091 0
Well No	1 Elev. 988.71	8 5/8	2270 2270
District	Ripley Jackson County	7	5136 5136
Surface	W.S. Young et al, Kenna, W.Va.	2 3/8	5230 5230
Mineral	Same		
Commenced	April 28, 1943		
Completed	Aug. 14, 1943		
Date shot	8-15-43 Depth 5219 to 5242 with 60 qts. glycerine		
Open flow	20/10ths W in 7"	CASING CEMENTED:	
Volume	680 lbs. 24 hrs. 1,392 MCF.	8 5/8"	504', 6-19-43
Salt Water	1800' H.F.	7"	210', 7-31-43

Red Rock	12	25	-Corniferous Lime -463	5120	5218
Slate & Shells	25	67	-Oriskany Sand	5218	5256
Red Rock	67	77	-Lime - Held.	5256	
Slate & Shells	77	90	TOTAL DEPTH 485		5260
Red Rock	90	240	Hole filled up to		5256
Sand	240	275			
Slate & Shells	275	315	Small show gas 2560'		
Red Rock & Shells	315	565	Gas 5219' show. No test		
Sand	565	590			
Slate & Shells	590	645	Gauges in Oriskany B.S.		
Red Rock & Shells	645	665	5220' 20/10 W 2" 189 MCF		
Slate & Shells	665	695	5222' 2/10 W 7" 22# 610 MCF		
Red Rock & Shells	695	775	5224' 4/10 W 7" 22# 862 MCF		
Slate & Shells	775	815			
Red Rock	815	890	RECORD OF SHOT:		
Slate & Shells	890	950			
Red Rock	950	1015	Test before shot 2/10 W 7" 24# 598 MCF		
Sand	1015	1055	Shot with 60 qts. glyc. from 5219 to 5242'		
Slate & Shells	1055	1130	With 24" Shells on 14' Anchor		
Sand	1130	1160			
Slate & Shells	1160	1290	TEST AFTER SHOT:		
Sand	1290	1365			
Slate & Shells	1365	1480	First 10 Mins. 26/10 W 7" 24# 2,157 MCF		
Sand	1480	1500	" 15 " 25/10 W 7" " 2,157 "		
Slate	1500	1515	" 20 " 22/10 W 7" " 1,984 "		
Sand	1515	1535	" 25 " 22/10 W 7" " 1,984 "		
Slate & Shells	1535	1595	" 30 " 22/10 W 7" " 1,984 "		
Sand	1595	1620	" 40 " 22/10 W 7" " 1,984 "		
Slate & Shells	1620	1675	" 45 " 20/10 W 7" " 1,892 "		
Lime	1675	1730	" 50 " 20/10 W 7" " 1,892 "		
Slate	1730	1733	" 60 " 20/10 W 7" " 1,892 "		
✓ Salt Sand	1733	1912	Show oil 1747'		
Slate	1912	1915			
✓ Maxon Sand - 2	1915	2000			
✓ Big Lime	2000	2171			
✓ Injun Sand - Kenna } 340	2171	2176			
Slate	2176	2183			
✓ Injun Sand	2183	2210			
Slate	2210	2240			
✓ Sand-Squaw	2240	2255			
Lime	2255	2263			
Slate & Shells	2263	2658			
✓ Lime-Berea - 2	2658	2718	Small show Gas 2660'		
Slate & Shells	2718	3900			
✓ Shale Brown - 441	3900	3950			
Slate & Shells	3950	4330			
Shale Brown	4330	4440			
Slate & Shells	4440	4875			
Shale Brown	4875	5040			
Slate White	5040	5060			
✓ Shale Black - MARCELLUS	5060	5120			