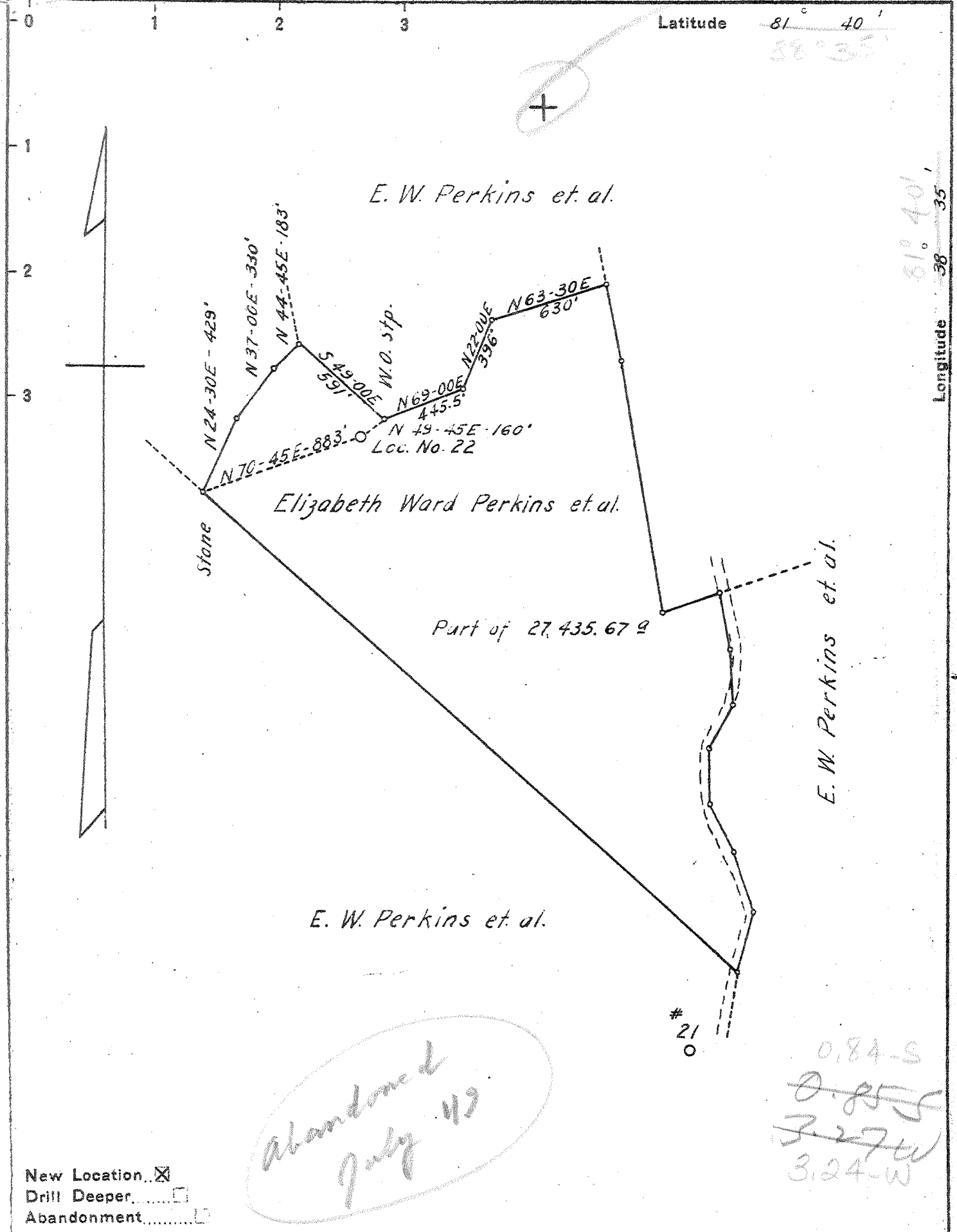


P



New Location
 Drill Deeper
 Abandonment

Abandoned July 49

0.84-S
~~0.85-S~~
 3.27-W
 3.24-W

Company	United Carbon Co.		
Address	Charleston, W. Va.		
Farm	Elizabeth Ward Perkins et al.		
Tract	Acres 27,435.67	Lease No.	2428
Well (Farm) No.	22	Serial No.	1088
Elevation (Spirit Level)	1033.59 Ground		
Quadrangle	Kenna - C		
County	Jackson	District	Ripley
Engineer	E. W. Withrow		
Engineer's Registration No.			
File No.	Drawing No.		
Date	9-28-42	Scale	1" = 660'

STATE OF WEST VIRGINIA
 DEPARTMENT OF MINES
 OIL AND GAS DIVISION
 CHARLESTON

WELL LOCATION MAP

FILE NO. JAC-407

+ Denotes location of well on United States Topographic Maps, scale 1 to 62,500, latitude and longitude lines being represented by border lines as shown.

- Denotes one inch spaces on border line of original tracing.

Deep Well

WEST VIRGINIA DEPARTMENT OF MINES
OIL & GAS DIVISION
W E L L R E C O R D

Permit No. Jac 407		Gas Well
Kenna Quad.		CASING & TUBING
Company	United Carbon Company	16 16
Address	Box 1913, Charleston, W.Va.	13 3/8 776
Farm	Eliz. Ward Perkins et al Acres 27,435.67 10 $\frac{1}{2}$ 118 $\frac{1}{2}$ '	
Location	Dudden Fork	8 5/8 2256' 2256'
Well No	22 Elev. 1004'	7 5205 5202
District	Ripley Jackson County	
Surface	George Hall, Kenna, W.Va.	
Mineral	Eliz. Ward Perkins et al	
	c/o Jas. S. Conley, Atty., 1101 Union Bldg.	
	Charleston, W.Va.	Casing cemented:
Commenced	Oct. 15, 1942	8 5/8 514' 12-23-42
Completed	April 3, 1943	7 210' 3-18-43
Open Flow	70/10ths W in 7" O.D. 22#	
Volume	3,610,000 C.F.	
Rock Pressure	1570 lbs. 48 hrs.	
Salt Water	1374' 1 blr. pr. hr.	

Clay	30	Lime	1700	1750
Red Rock	60	Salt Sand	1750	2080
Slate	60	Big Lime	2080	2112
Red Rock	80	Sand - Inj	2112	2170
Sand	130	Slate White	2170	2180
Red Rock	150	Sand - S. Sand	2180	2215
Slate	210	Slate & Shells	2215	3850
Sand	255	Brown Shale - 441	3850	4000
Slate	290	Slate White	4000	4330
Red Rock	300	Shale Brown	4330	4450
Slate	365	Slate White	4450	4610
Red Rock	400	Slate & Shells	4610	4800
Slate & Shells	430	Slate White	4800	4935
Sand	490	Shale Brown	4935	5130
Slate	520	Shale Black	5130	5190 - MARCELLUS
Red Rock	530	Corniferous Lime	5190	5295 - #463
Lime	545	Oriskany Sand	5295	5333
Sand	686	Lime - Red	5333	
Slate	739	746	485	
Red Rock	746	774 Show Gas 5302	No test	
Slate	774	800		
Red Rock	800	815	TOTAL DEPTH	5335
Slate	815	825		
Red Rock	825	840	Gauges in Oriskany Sand:	
Lime	840	845	5302' show gas . No Test	
Slate	845	855	5304' 2/10 W 7" 22# 610 MCF	
Lime	855	880	5305' 4/10 W 7" 22# 862 MCF	
Slate	880	918	5307' 6/10 W 7" 22# 1,057 MCF	
Lime	918	978	5308' 8/10 W 7" 22# 1,220 MCF	
Red Rock	978	1006	5318' 6/10 W 7" 22# 1,057 MCF	
Lime	1006	1022	5324' 4/10 W 7" 22# 862 MCF	
Red Rock	1022	1038	5325' 12/10 W 7" 22# 1,494 MCF	
Lime	1038	1070	5324' 62/10 W 7" 22# 3,397 MCF	
Slate & Shells	1070	1100	5326 46/10 W 7" 22# 2,926 MCF	
Lime	1100	1145	5328 66/10 W 7" 22# 3,504 MCF	
Slate	1145	1160	5330 70/10 W 7" 22# 3,610 MCF	
Sand	1160	1175	5331 72/10 W 7" 22# 3,660 MCF	
Slate	1175	1204	5335 70/10 W 7" 22# 3,610 MCF when shut	
Sand	1204	1230	in	
Slate	1230	1240		
Lime	1240	1245		
Slate	1245	1255		
Lime	1255	1285		
Sand	1285	1304		
Slate	1304	1340		
Sand	1340	1440		
Slate & Shells	1440	1450		
Sand	1450	1480		
Slate & Shells	1480	1555		
Sand	1555	1620		
Slate	1620	1635		
Sand	1635	1700		