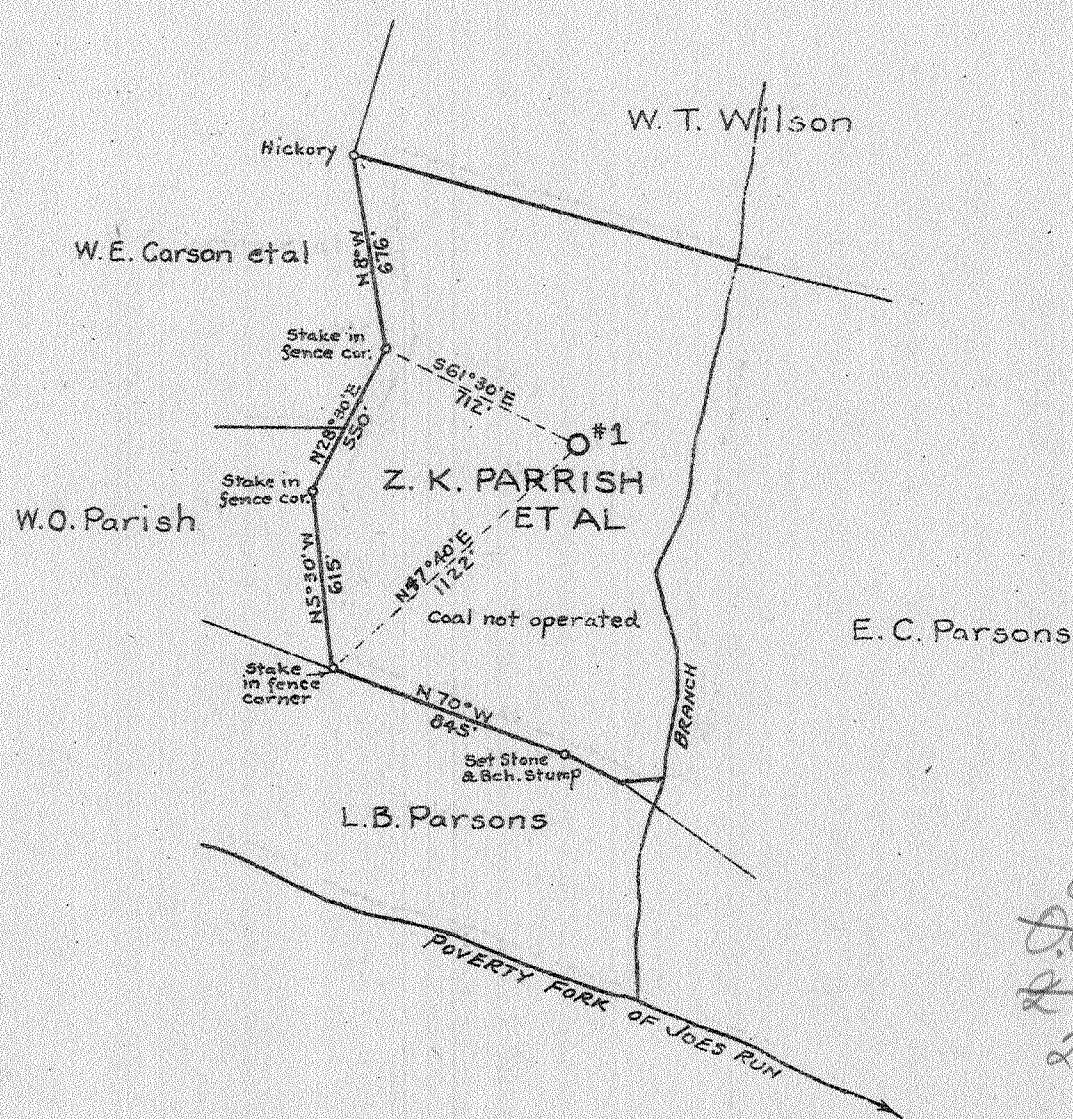




Latitude 38 50

Longitude 81 35



0.03-5
~~0.02~~
~~2.70 W~~
 2.65-W

New Location X
 Drill Deeper
 Abandonment

Company MULLINS GAS CO.
 Address CHARLESTON, W.VA.
 Farm Z. K. PARRISH ET AL
 Tract _____ Acres 53 Lease No. _____
 Well (Farm) No. 1 Serial No. _____
 Elevation (Spirit Level) 812.3
 Quadrangle RIPLEY
 County JACKSON District RIPLEY
 Engineer [Signature]
 Engineer's Registration No. 659
 File No. 60-91 Drawing No. _____
 Date MAR. 18, 1942 Scale 1" = 660'

STATE OF WEST VIRGINIA
 DEPARTMENT OF MINES
 OIL AND GAS DIVISION
 CHARLESTON

WELL LOCATION MAP
 FILE NO. JAC-314

+ Denotes location of well on United States Topographic Maps, scale 1 to 62,500, latitude and longitude lines being represented by border lines as shown.

- Denotes one inch spaces on border line of original tracing.

6-6-1942

WEST VIRGINIA DEPARTMENT OF MINES
OIL & GAS DIVISION
W E L L R E C O R D

Permit No. Jac 314	Mullins Gas Company et al	Gas Well
Company	Box 28, Charleston, W.Va.	CASING & TUBING
Address	Z.K. Parrish et al Acres 160(Consolidated 16	18 32 32
Farm	Joes Run of Mill Creek Tracts)	13 3/8 199 Pulled
Location	1 Elev. 812.3 (G)	10 1/2 1148 Pulled
Well No.	Ripley Jackson County	85/8 2091 2091
District	Z.K. Parrish et al	7" 5021 5021
Surface	Same	23/8 5118 5118
Mineral	June 1, 1942	Perf. 6' with 32
Commenced	Aug. 31, 1942	1/2" holes
Completed		
Not shot		
Flow	65/10ths M in 7" O.D. 22#	Casing shoes;
Volume	12,836,000 C.F.	1- 8 5/8" O.D. &
Rock Pressure	1440 lbs. 24hrs.	1- 7" O.D.
Fresh Water	335' 1/2 b.p.h.; 375' 1/2 b.p.h.	
Salt Water	635' 10 b.p.h.;	Perf. top 5122
	1465' hole full	Perf. bot 5128
		Casing cemented:
		5021' 7" O.D. 8-24-42
		20 sacks Hi-Early Cement

Red Rock	2	140	Black Lime	2080	2125
Lime	140	160	Lime Shells	2125	2140
Red Rock	160	200	Sand - WEIR	2140	2250
Lime	200	210	Slate & Shells	2250	2300
Red Rock	210	225	White Slate	2300	2440
Gray Slate	225	250	✓ Brown Shale	2440	2455
Red Rock	250	275	✓ Berea Shells	2455	2468
Gray Slate	275	300	Slate & Shells	2468	3714
Sand	300	335	Brown Shale - AA	3714	3850
Gray Slate	335	360	Slate & Shells	3850	3990
Lime	360	375	Brown Shale	3990	4280
Red Rock	375	390	White Slate	4280	4780
Gray Lime	390	400	Brown Shale	4780	4980
Gray Slate	400	420	✓ Black Shale - MARCELLUS	4980	5006
Red Rock	420	435	✓ Corniferous Lime - 463	5006	5116
Lime	435	475	✓ Oriskany Sand	5116	---
Slate	475	500			
Red Rock	500	525	TOTAL DEPTH	475	5130
Blue Lime	525	530			
Red Rock	530	560			
✓ Pitts. Sand	560	635			
Gray Slate	635	760			
Sand	760	780			
Red Rock	780	920			
Gray Slate	920	990			
Sand	990	1000			
Slate & Shells	1000	1035			
Red Rock	1035	1045			
Gray Slate	1045	1140			
Slate & Shells	1140	1280			
Sand	1280	1320			
Slate & Shells	1320	1345			
✓ Salt Sand	1345	1465			
Slate & Shells	1465	1745			
Lime	1745	1755			
Slate	1755	1760			
Sand	1760	1905			
Big Lime	1905	1968			
Big Injun <i>Keener 340</i>	1968	1995			
Slate & Shells	1995	2010			
✓ Squaw Sand <i>Injun</i>	2010	2080			