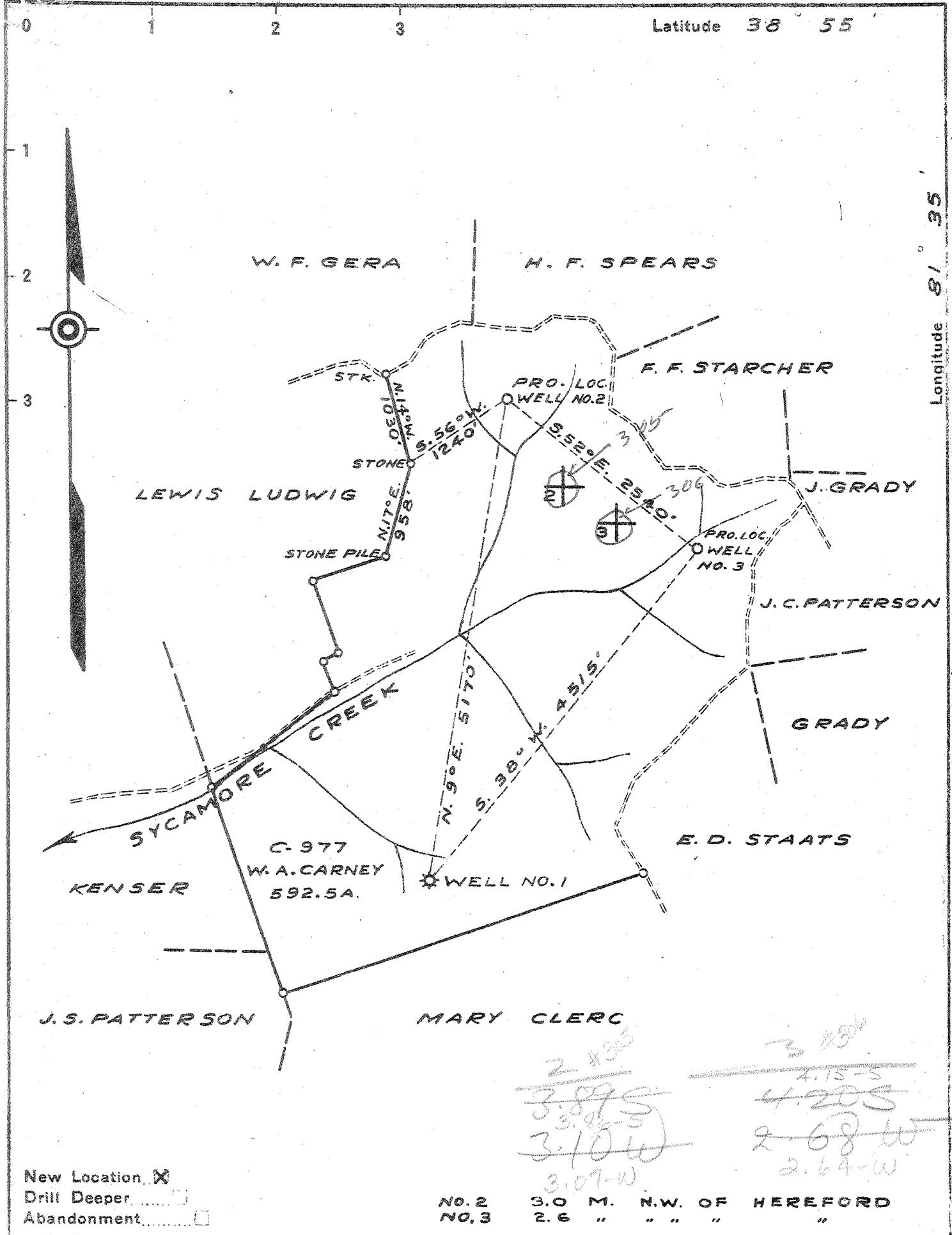


Latitude 38 55

Longitude 81 35



New Location
 Drill Deeper
 Abandonment

NO. 2
 NO. 3

3.0 M. N.W. OF HEREFORD
 2.6 " " " "

Handwritten notes:
 2 #305
 3.895
 3.895-5
 3.10 W
 3.07 W
 3 #306
 4.15-5
 4.20 S
 2.68 W
 2.64 W

Company COLUMBIAN CARBON CO.
 Address BOX 1240 CHARLESTON W.VA.
 Farm W. A. CARNEY
 Tract _____ Acres 592.5 Lease No. C-977
 Well (Farm) No. 2 AND 3 Serial No. _____
 Elevation (Spirit Level) 2=945.4 3=879.6
 Quadrangle RIPLEY S.W. -5-C
 County JACKSON District RIPLEY
 Engineer J. M. Sell
 Engineers Registration No. 772
 File No. _____ Drawing No. 425
 Date JAN. 23, 1942 Scale 1" = 1320'

STATE OF WEST VIRGINIA
 DEPARTMENT OF MINES
 OIL AND GAS DIVISION
 CHARLESTON

WELL LOCATION MAP

FILE NO. JAC-305 - # 2

JAC-306 - # 3

+ Denotes location of well on United States Topographic Maps, scale 1 to 62,500, latitude and longitude lines being represented by border lines as shown.

- Denotes one inch spaces on border line of original tracing.

Handwritten: 6-6-1942

WEST VIRGINIA DEPARTMENT OF MINES
OIL & GAS DIVISION
W E L L R E C O R D

Permit No. Jac-305

Company Columbian Carbon Company
Address Box 873, Charleston, W.Va.
Farm W.A. Carney Acres 592.5
Location Sycamore Creek
Well No 2 (GW-646) Elev. 950.7 DF
District Ripley Jackson County
Surface Enoch Staats & W.A. Carney
 Ripley, W.Va.

Gas Well
CASING & TUBING

16	40'	40'
13 3/8	861'2	0
10 3/4	1268'1	1092'4
8 5/8	2274'4	0
7	5203'9	5203'9
2 3/8	5369'7	5369'7

Mineral ---
Commenced 4-15-42
Completed 7-17-42
Not shot
Volume 5955 MCF
Rock Pressure 1225# 11 days
Fresh Water 777' 5-15" Blrs. /hr.
Salt Water 1363-66' 1/2-10" blr.pr.hr.
 1565' Hole Full

Yellow Clay	0	20	Lime	2002	2020
Red Rock	20	26	Sandy Lime	2020	2023
Yellow Clay	26	48	Big Lime	2023	2175
Red Rock	48	55	Slate	2175	2178
Blue Slate	55	60	Sand - <i>Keener</i> } 340	2178	2196
Red Rock	60	108	Slate	2196	2210
Blue Slate	108	118	Sand <i>Inj.</i>	2210	2269
Red Rock	118	190	Slate	2269	2284
Blue Slate	190	197	Lime	2284	2290
Red Rock	197	228	Slate & Shells	2290	2619
Blue Slate	228	248	Brown Shale	2619	2630
Red Rock	248	289	Borca Sand	2630	2656
Blue Slate	289	325	Slate & Shells	2656	4246
Red Rock	325	497	Brown Shale - 441	4246	4438
Blue Slate	497	512	Slate & Shells	4438	4920
Sand	512	538	Brown Shale	4920	5088
Red Rock	538	558	Slate	5088	5113
Blue Slate	558	575	Black Shale - MARCELIUS	5113	5143 SLM
Red Rock	575	645	Corniferous Lime - 46	5143 SLM	5265 SLM
Blue Slate	645	650	Oriskany Sand	5265 SLM	5323
Red Rock	650	737	Lime	5323	5333
Blue Slate	737	749	Oriskany Sand <i>Hard</i>	5333	5350 SLM
Red Rock	749	761	TOTAL DEPTH		5350 SLM
Sand	761	829	PAYS: 5266-70; 5284-86; 5288-91		
Slate	829	855			
Lime	855	858	CEMENT RECORD:		
Green Slate	858	968	4-25-42 Aquagelled 13 3/8" casing. Ran		
Red Rock	968	1090	23 sacks aquagel and 1 bail Fibrotex.		
Blue Slate	1090	1156			
Sand	1156	1186	5-9-42 Aquagelled 10 3/4" casing. Ran 17		
Slate	1186	1205	sacks aquagel and 1 bail Fibrotex.		
Red Rock	1205	1233			
Slate & Shells	1233	1274	6-1-42 Aquagelled 8 5/8" casing. Ran		
Red Rock	1274	1282	26 sacks aquagel and 1 bail Fibrotex.		
Slate	1282	1287			
Lime	1287	1297	6-27-42 Cemented 7" casing. Ran 12		
Slate & Shells	1297	1336	sacks Superior Cement. Pulled pipe up		
Sand	1336	1375	60' and ran 50 sacks aquagel and 4 bails		
Slate & Shells	1375	1526	Fibrotex. Set pipe back on bottom. No		
Sand	1526	1551	Circulation-no returns. 50' cement in		
Slate & Shells	1551	1555	hole.		
Salt Sand	1555	1640			
Slate & Shells	1640	1654	Show of gas 2648'		
Sand	1654	1670			
Slate	1670	1672			
Sand	1672	1695			
Slate	1695	1747			
Sand	1747	1803			
Lime	1803	1820			
Slate & Shells	1820	1917			
Sand	1917	2002			

5143 5265 5350
951 951

4192 4314