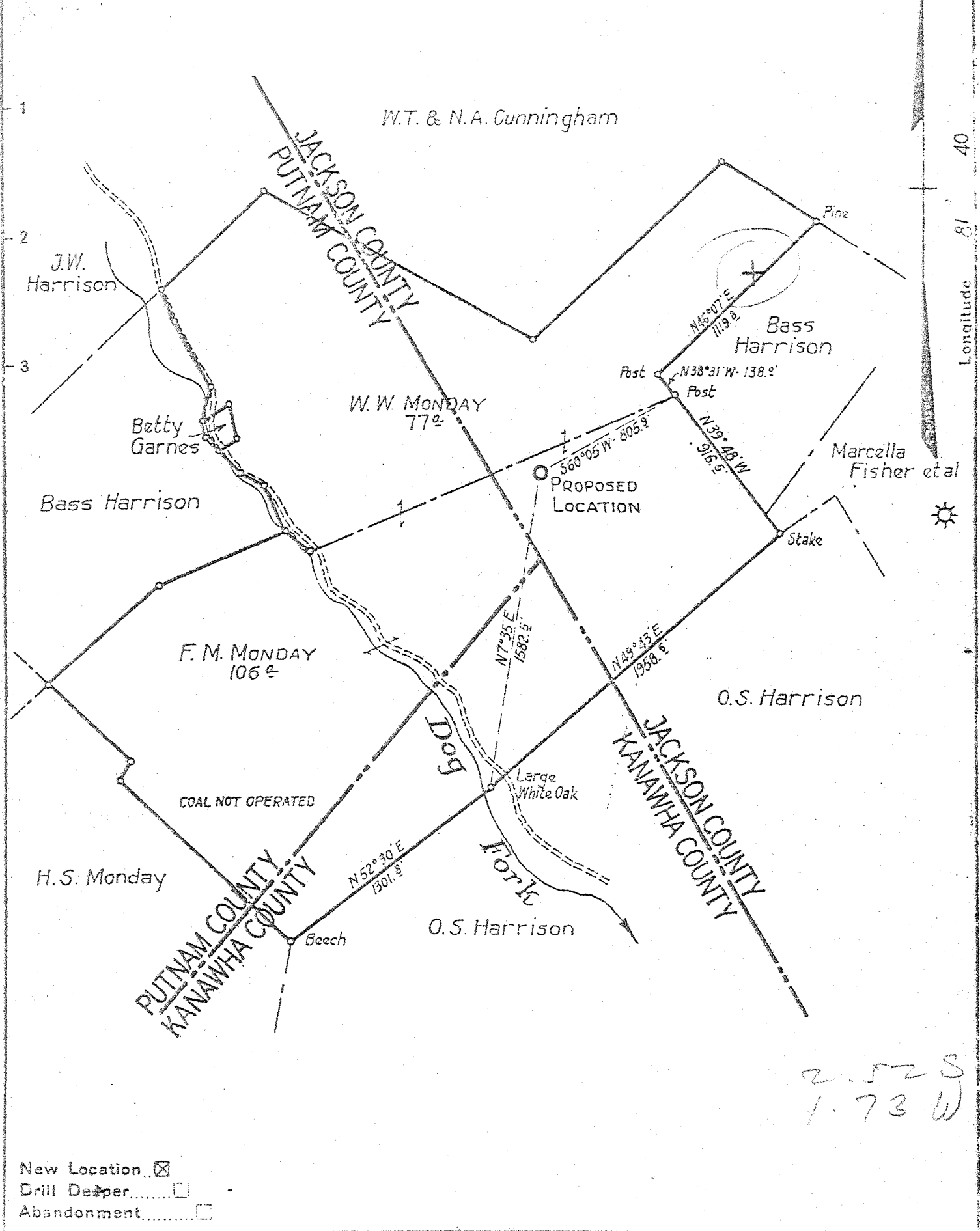


Latitude 38 40 Longitude 81 40



2.52 S
1.73 W

New Location
 Drill Deeper
 Abandonment

Company WEST VIRGINIA GAS CORPORATION
 Address P.O. BOX 404 CHARLESTON, W. VA.
 Farm F.M. MONDAY ET AL
 Tract _____ Acres 183[±] Lease No. 0V441-0V445
 Well (Farm) No. ONE Serial No. 068
 Elevation (Spirit Level) 822
 Quadrangle KENNA ~~WV~~ WC
 County JACKSON District RIPLEY
 Engineer W. S. GRAVELY
 Engineer's Registration No. _____
 File No. 3 Drawing No. _____
 Date FEB. 12, 1942 Scale 1" = 660'

STATE OF WEST VIRGINIA
 DEPARTMENT OF MINES
 OIL AND GAS DIVISION
 CHARLESTON

WELL LOCATION MAP
 FILE NO. Jac-297

+ Denotes location of well on United States Topographic Maps, scale 1 to 62,500, latitude and longitude lines being represented by border lines as shown.

- Denotes one inch spaces on border line of original tracing.

10-6-1942

WEST VIRGINIA DEPARTMENT OF MINES
OIL & GAS DIVISION
W E L L R E C O R D

Permit No. Jac 297

Company	W. Va. Gas Corp.	Gas Well	CASING & TUBING
Address	801 Union Bldg., Charleston, W. Va.	16	24 24
Farm	F. M. Monday et al Acres 183	10	978' 11 25' 2
Location	Dog Fork	8 1/2	2152' 4 2152' 4
Well No	One serial No. C-68 Elev. 881.70	7	5072' 9 5072' 9
District	Ripley Jackson County	2	5145'
Surface	F. M. Monday, Liberty, W. Va.		
Mineral	Same		Perf. top 5122'
Commenced	3-25-42		Perf. bot 5127'
Completed	7-2-42		
Flow	11-10ths M. in 7" (22#)		Casing cemented:
Volume	5,280 M CF.		120 bags cement behind
Rock Pressure	1060 lbs. hrs.---		8 5/8"
Fresh Water	1015' and 1620'		10 bags aquagcl behind
			7"
			12 bags cement behind
			7"

Red Rock	0	60	Brown Shale	3765	3805
Sand	60	130	Slate & Shells	3805	4200
Red Rock	130	160	Brown Shale	4200	4335
Sand	160	180	White Shale	4335	4740
Red Rock	180	200	Brown Shale	4740	5005
Sand	200	225	Corniferous Lime ⁴⁶³	5005	5099
Red Rock	225	355	Oriskany Sand	5099	5129
White Slate	355	380	TOTAL DEPTH		5129
Red Rock	380	410			
White Slate	410	420	Gas show 3765-3805		
Sand	420	450	6-28-42 14/10 M 7" 22#	5955 M-5100-	
Slate & Shells	450	504		5108	
Red Rock	504	525	13/10 M 7" 22#	5738 M-5111	
Slate & Shells	525	555	13/10 M 7" 22#	5738 M-5114	
Red Rock	555	650	11/10 M 7" 22#	5280 M-5126	
Slate & Shells	650	665			
Red Rock	665	725			
Sand	725	745			
Slate & Shells	745	822			
Red Rock	822	860			
Slate & Shells	860	869			
Sand	869	880			
White Slate	880	915			
Red Rock	915	950			
Slate & Shells	950	970			
Black Lime	970	995			
Sand	995	1020			
Slate	1020	1023			
Lime	1023	1040			
Slate	1040	1050			
Sand	1050	1090			
Slate & Shells	1090	1158			
Sand	1158	1212			
Slate & Shells	1212	1320			
Sand	1320	1400			
Slate & Shells	1400	1445			
Sand	1445	1465			
Slate & Shells	1465	1580			
Salt Sand	1580	1710			
Slate	1710	1722			
Salt Sand	1722	1928			
Big Lime ³⁴⁰	1928	2044			
Slate	2044	2049			
Injun Sand	2049	2110			
Slate	2110	2113			
Sand - ^{Squaw}	2113	2140			
Limo	2140	2160			
Slate & Shells	2160	2230			
Limo	2230	2250			
Slate & Shells	2250	2525			
Borea Grit	2525	2554			
Slate & Shells	2554	3765			