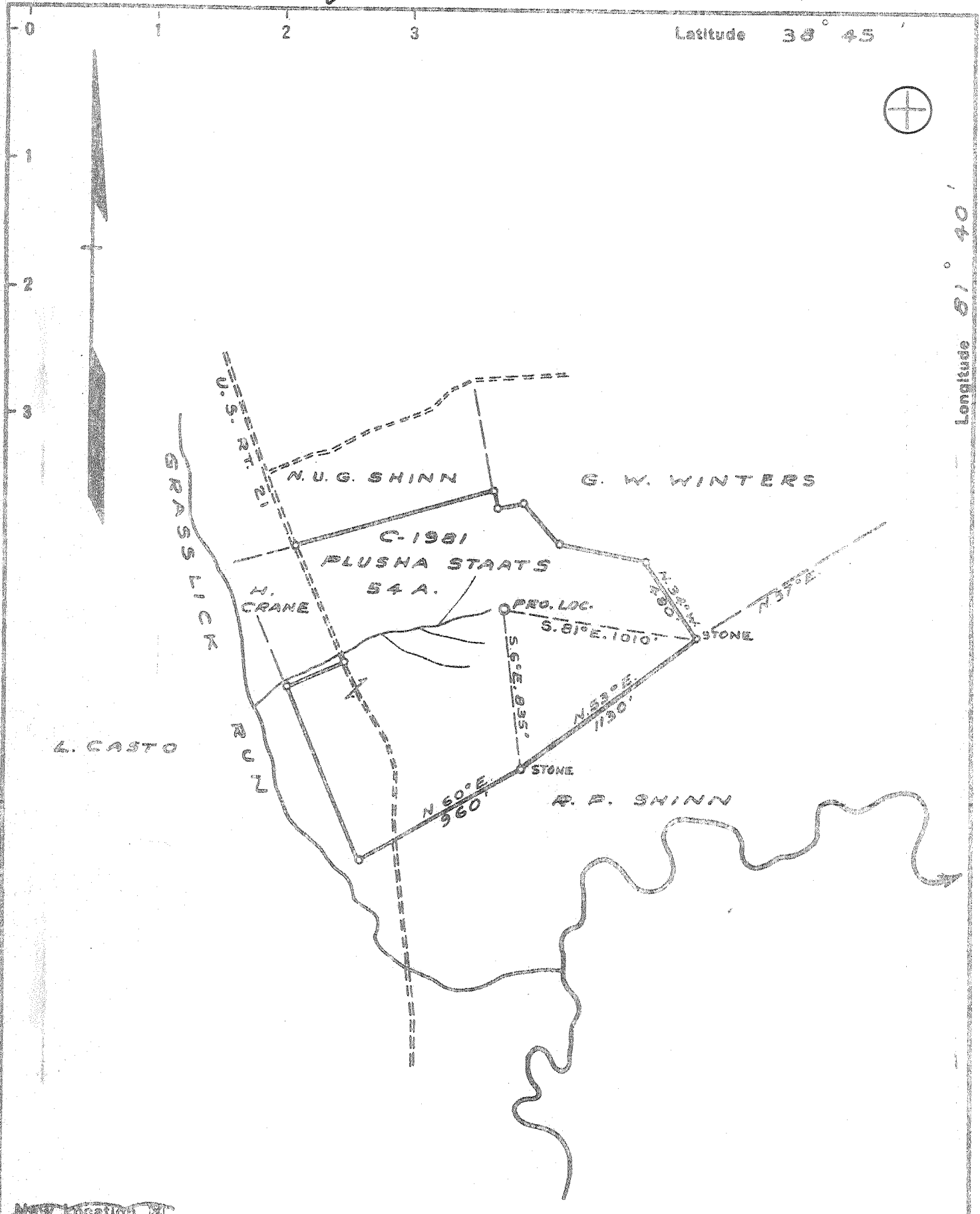


Latitude 38° 45'

Longitude 81° 40'



New Location
 Drill Deeper
 Abandonment

Wanted 2-4-74

LOC. 2.8 M. WEST OF STAATS MILLS

City Service Oil Company
 Company ~~COLUMBIAN CARBON CO.~~
 Address ~~BOX 1240~~ CHARLESTON W.VA. 25323
 Farm PLUSHA STAATS
 Tract _____ Acres 54 Lease No. C-1981
 Well (Farm) No. ONE Serial No. GW-640
 Elevation (Spirit Level) 865.7
 Quadrangle KENNA N.W. -3-
 County JACKSON District RIPLEY
 Engineer J. McCall
 Engineer's Registration No. 772
 File No. _____ Drawing No. 424
 Date 12-19-41 Scale 1" = 660'

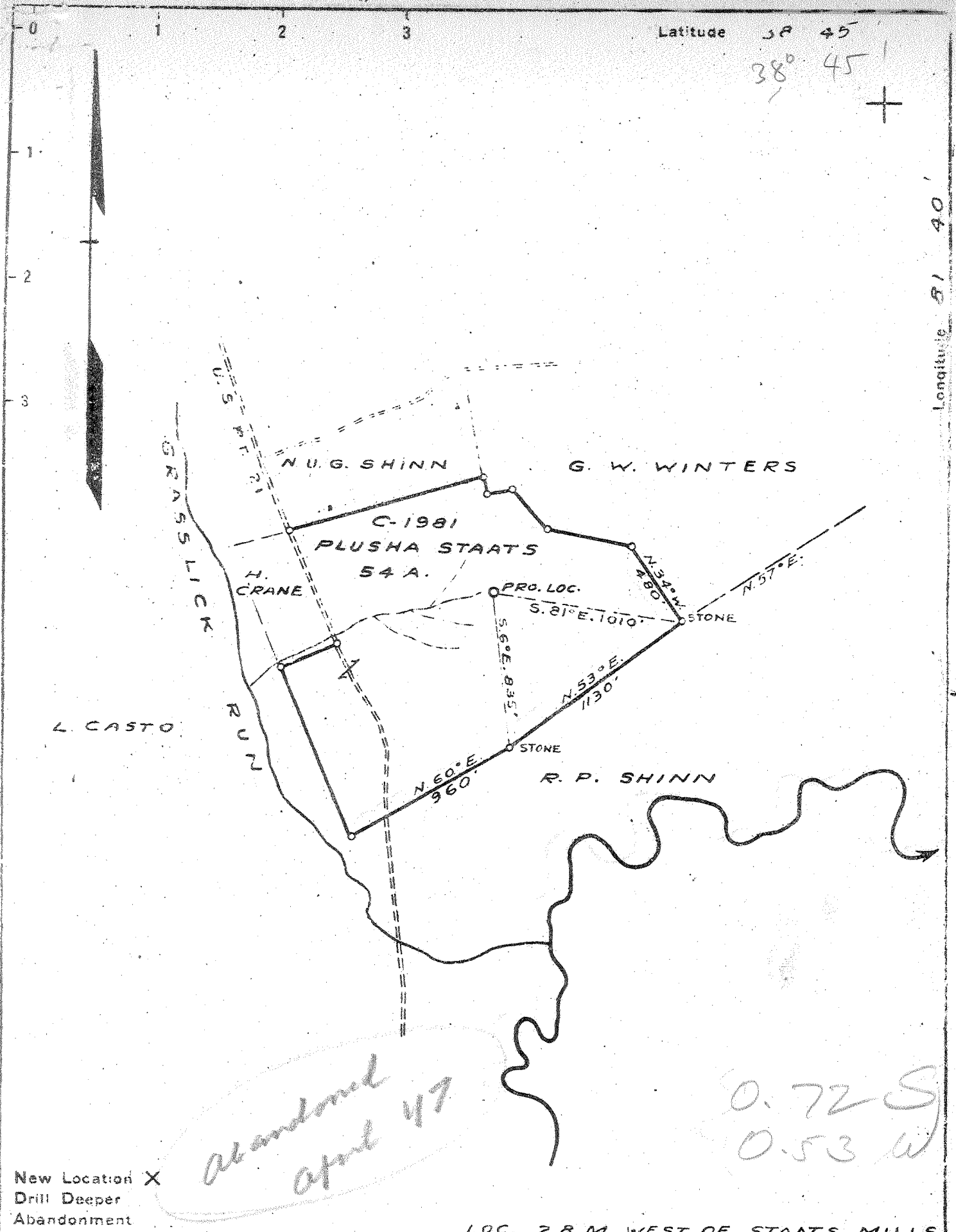
STATE OF WEST VIRGINIA
 DEPARTMENT OF MINES
 OIL AND GAS DIVISION
 CHARLESTON

WELL LOCATION MAP
 FILE NO. JAG-271-P

+ Denotes location of well on United States Topographic Maps, scale 1 to 62,500, latitude and longitude lines being represented by border lines as shown.

- Denotes one inch spaces on border line of original tracing.

47-035



New Location X
 Drill Deeper
 Abandonment

*abandoned
 April 47*

*0.72 S
 0.53 W*

LOC. 2.8 M. WEST OF STAATS MILLS

Company	COLUMBIAN CARBON CO.
Address	BOX 1240 CHARLESTON W.VA.
Farm	PLUSHA STAATS
Tract	Acres 54 Lease No. C-1981
Well (Farm) No.	ONE Serial No.
Elevation (Spirit Level)	865.7
Quadrangle	KENNA (N.W.) -3-
County	JACKSON District RIPLEY
Engineer	<i>J. McCall</i>
Engineer's Registration No.	772
File No.	Drawing No. 424
Date	12-19-41 Scale 1" = 660'

STATE OF WEST VIRGINIA
 DEPARTMENT OF MINES
 OIL AND GAS DIVISION
 CHARLESTON

WELL LOCATION MAP
 FILE NO. JAC-271

+ Denotes location of well on United States Topographic Maps, scale 1 to 62,500, latitude and longitude lines being represented by border lines as shown.

- Denotes one inch spaces on border line of original tracing.

6-6-192

WEST VIRGINIA DEPARTMENT OF MINES
OIL & GAS DIVISION
W E L L R E C O R D

Permit No. Jac-271		Gas Well
Company	Columbian Carbon Co.	CASING & TUBING
Address	Box 1240, Charleston, W.Va.	16 21'4 21'4
Farm	Plusha Staats Acres 54	13 3/8 847' Pulled
Location	Grasslick Run	10 1/2 1165'5 "
Well No	1 (GW- 640) Elev. 873.8 D.F.	8 5/8 2177'11 2177'11
District	Ripley Jackson County	7 5088'10 5088'10
Surface	Plusha Staats et al, contact	2 3/8 5232'1 5232'1
Mineral	Col. Carbon for addresses	Liners
Commenced	Same	3 1/2 92'8 92'8
Completed	2-7-42	
Shot	4-22-42	See below for Cement
Volume	4-22-42 Depth 5145' SLM-5185' SLM Record	
Rock Pressure	400# 80% Gelatin	
Fresh Water	2,250 MCF	
Salt Water	1315 lbs. 4 da.	
	300' 4-15" blrs. pr. hr.;	
	1330' 2-10" blrs. pr. hr.; 1795'	
	Hole Full; 1315' hole full	

Sand	0	40	Slate	2159	2510
Red Rock	40	115	✓ Brown Shale	2510	2527
Slate	115	130	✓ Borea Grit	2527	2533
Red Rock	130	230	Slate Shells	2533	3277
Sand	230	255	Brown Shale	3277	3325
Slate	255	265	Slate	3325	3790
Sand	265	325	Brown Shale - 441	3790	3815
Slate	325	340	Slate & Shells	3815	4025
Red Rock	340	355	Brown Shale	4025	4190
Slate	355	370	White Slate	4190	4240
Limo, broken	370	405	Brown Shale	4240	4335
Slate	405	414	Slate	4335	4770
Red Rock	414	430	Brown Shale	4770	4895
Slate	430	475	Slate White	4895	4925
Red Rock	475	530	Brown Shale	4925	5012
Slate	530	560	Black Shale - MARCELLUS	5012	5042 SLM
Sand	560	570	✓ Corniferous Lime - 463	5042 SLM	5145 SLM
Slate	570	630	✓ Oriskany Sand	5145 SLM	5191
Lime	630	640	✓ Lime	5191	5200
Red Rock	640	655	Oriskany Sand	5200	5211
Slate	655	675	✓ Lime	5211	5222 SLM
Sand	675	703	TOTAL DEPTH		5222 SLM
Slate	703	714			
Sand	714	730			
Slate	730	735			
Sand	735	818			
Red Rock	818	839			
Lime	839	841	SLM 2-18-42 Aquagelled 13 3/8" casing.		
Red Rock	841	846	Ran 25 sacks aquagel with 1 sack Fibrotex		
Slate	846	864	mixed 6%.		
Sand	864	910			
Slate	910	940	2-23-42 Aquagelled 10 1/2" casing. Ran		
Red Rock	940	960	20 sacks aquagel with 1 sack Firbrotex.		
Slate	960	970			
Lime	970	980	3-10-42 Cemented 8 5/8" casing. Ran		
Sand	980	1006	100 sacks Superior Cement. Ran 10' spacer		
Slate	1006	1080	12' cement in hole.		
Sand	1080	1151			
Slate	1151	1158	4-11-42 Cemented 7" casing. Ran 12 sacks		
---Shell	1158	1160	Superior cement in dump bailer. 46'		
Slate	1160	1175	cement in hole.		
Sand	1175	1260			
Slate	1260	1425			
Sand	1425	1540			
Slate	1540	1560			
Sand	1560	1575			
Slate	1575	1595			
Sand	1595	1945			
✓ Dig Lime	1945	2047			
Slate	2047	2049			
✓ Sand - Injun	2049	2159			