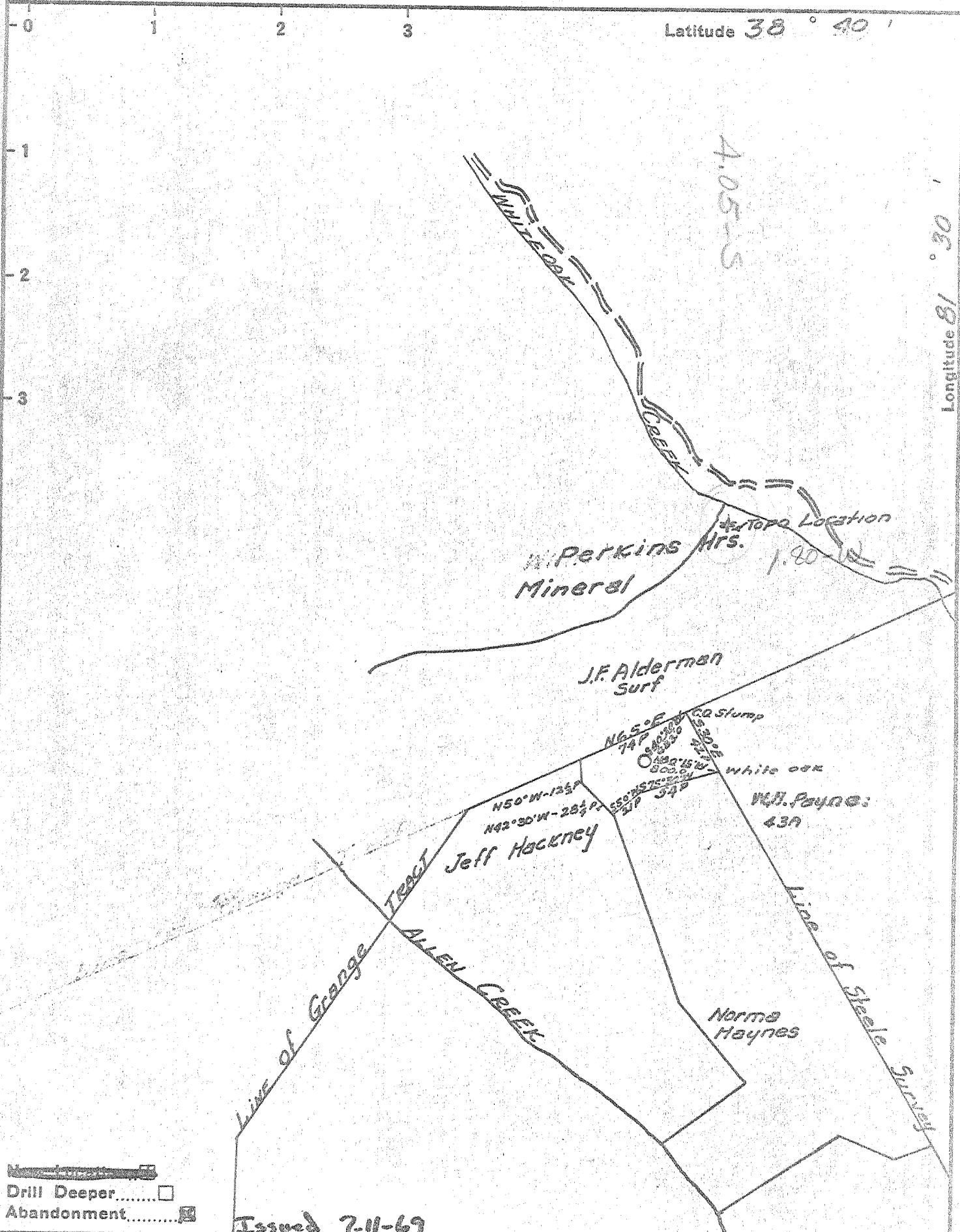


7/11/69 CE



Drill Deeper
 Abandonment

Issued 7-11-69

(CABOT CORPORATION)

Company Geophysical & Cabot, Inc.

Address 900 UNION BLDG. CHARLESTON WVA

Farm DOVIA ALDERMAN

Tract _____ Acres 18 A^c Lease No. 3-469

Well (Farm) No. 1 Serial No. 1009

Elevation (Spirit Level) 897.98

Quadrangle KENNA #1 EC

County JACKSON District Washington

Engineer R. F. Randolph

Engineer's Registration No. 806

File No. _____ Drawing No. _____

Date Sept 29, 1941 Scale 1" = 1320'

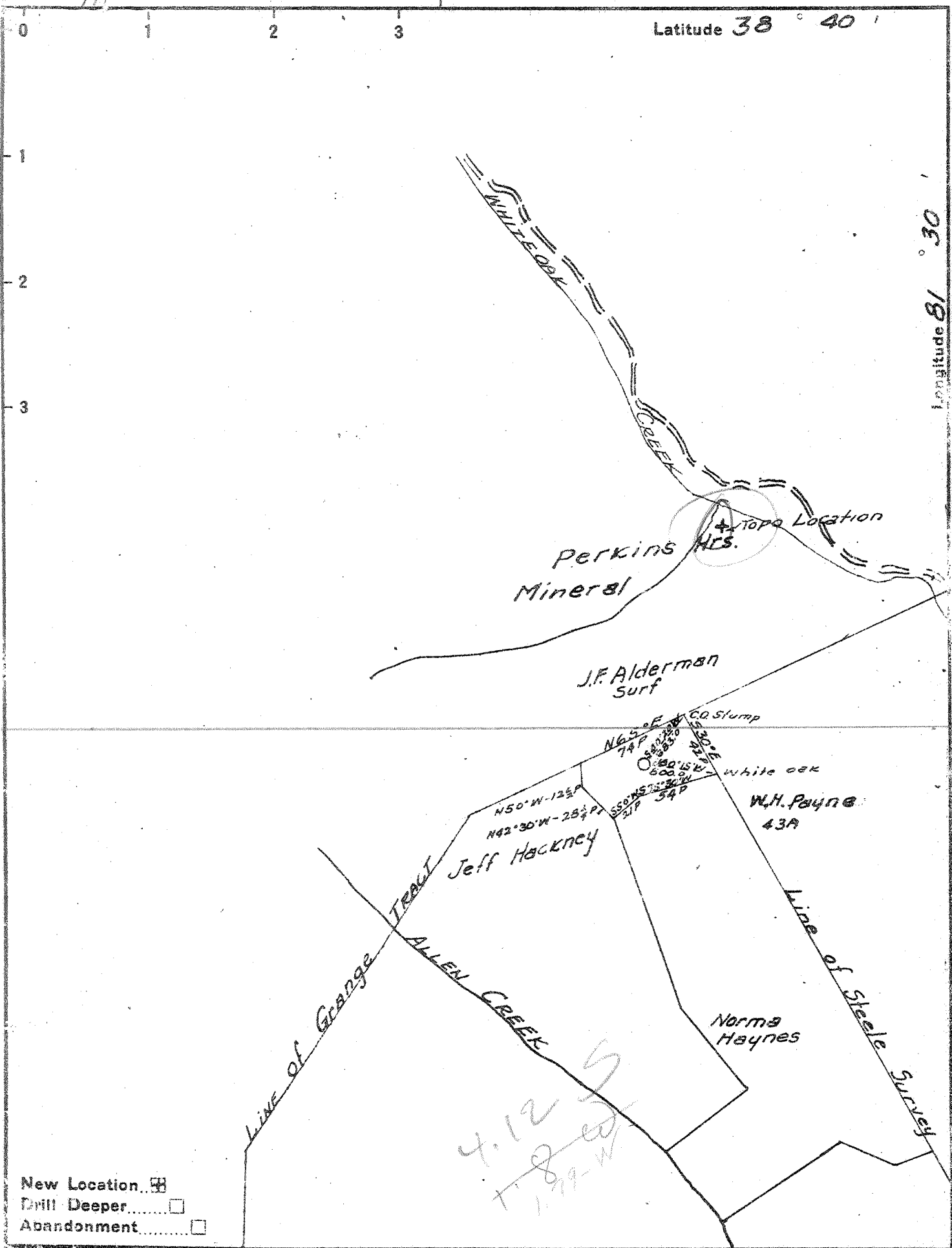
STATE OF WEST VIRGINIA
DEPARTMENT OF MINES
OIL AND GAS DIVISION
CHARLESTON

WELL LOCATION MAP
FILE NO. JAC-216-P

+ Denotes location of well on United States Topographic Maps, scale 1 to 62,500, latitude and longitude lines being represented by border lines as shown.

- Denotes one inch spaces on border line of original tracing.

"IMPERIAL" TRACING CLOTH
K & E CO., N. Y.



- New Location
- Drill Deeper
- Abandonment

Company GODFREY L. CABOT INC.
 Address 900 UNION BLDG. CHARLESTON WVA
 Farm DOVA ALDERMAN
 Tract _____ Acres 18 A^c Lease No. 3-469
 Well (Farm) No. 1 Serial No. 1009
 Elevation (Spirit Level) 897.98
 Quadrangle KENNA EC
 County JACKSON District Washington
 Engineer G. J. Randolph
 Engineer's Registration No. 806
 File No. _____ Drawing No. _____
 Date Sept 29, 1941 Scale 1" = 1320'

STATE OF WEST VIRGINIA
 DEPARTMENT OF MINES
 OIL AND GAS DIVISION
 CHARLESTON

WELL LOCATION MAP
 FILE NO. JAC-216

- + Denotes location of well on United States Topographic Maps, scale 1 to 62,500, latitude and longitude lines being represented by border lines as shown.
- Denotes one inch spaces on border line of original tracing.

WEST VIRGINIA DEPARTMENT OF MINES
OIL & GAS DIVISION
WELL RECORD

Permit No. JAC-216

Company Godfrey L. Cabot, Inc.
Address Charleston, W. Va.
Farm Dovia Alderman #1
Well No. 1 Serial No. 1009 Elev. 898
District Washington Jackson County
Commenced 10-16-41
Completed 1-4-42
Volume 16,104 M.C.F. Natural
Rock Pressure 1690 lbs., Oriskany Sand Testing Cas. & 28 sacks aquagel
Salt water 1485; 1787-1795 filled up 400' from top.

Gas Well

Casing Record
10 3/4 767 767
8 5/8 1984 -
7" 5142 5142
2 3/8" 5250 5250 Bull plugged (welded)
10 3/4" Casing shoe
1 - 8 5/8"x10x16" B.H.Packer
1 - 7" OD Sp. Orisk.Packer.
40 sacks aquagel & 4 sacks fibertex

Clay	0	16	Shale	5098	5120
Clay Sand	16	50	—Limo. <i>42</i>	5120	5243
Slate	50	100	—Orisk.	5243	5256
Red Rock	100	125			
Shale	125	160	Total Depth	5256/	
Lime	160	180			
Sand	180	200			
Red Rock	200	240			
Lime	240	290			
Shale Broken	290	337			
Sand	337	357	Gauges in Oriskany Sand.		
Slate	357	377	1-2-42	5243-44	202 M
Red Rock	377	420	1-4-42	5245	492 M
Lime	420	448		5246	2466M
Red Rock	448	630		5247	3182 M
Slate, Sholly	630	728		5248	4270 M
Sand	728	902		5249	5589 M
Shale	902	909		5250	7073 M
Sand	909	1000		5251	7437 M
Coal	1000	1015		5252	8987 M
Shale	1015	1047		5253	10,385 M
Lime	1047	1059		5253	11,042 M
Slate	1059	1125		5254	13,632 M
Sand	1125	1135		5254	14,355 M
Shale	1135	1163		5254	15,696 M
Lime	1163	1188		5255	16,104 M
Sand	1188	1282		5255	15,790 M
Shale	1282	1352		5256	15,790 M
Sand	1352	1385			
Lime	1385	1390			
Shale	1390	1425			
Sand - Salt Sand?	1425	1775			
Lime	1775	1785			
Shale	1785	1787			
Lime	1787	1795			
Shale	1795	1797			
Lime	1797	1802			
Shale - P. Cave?	1802	1804			
Lime - Biglime	1804	1962			
Sand - Keener?	1962	1979			
Shale	1979	1990			
Lime	1990	1998			
Shale Shells	1998	2124			
Shale	2124	2415			
Shale	2415	2790			
Shale	2790	3190			
Shale, Sholly	3190	3246			
Shale	3246	3401			
Lime	3401	3459			
Shale, Sholly	3459	3511			
Shale	3511	3553			
Shale, Sholly	3553	3610			
Shale, Br. - 441	3610	3720			
Shale, Limoy Shells	3720	3863			
Shale	3863	3891			
Shale, Sholly	3891	3988			
Shale, Gray	3988	4108			
Shale, Br.	4108	4335			
Shale	4335	4782			
Shale	4782	5058			
Shale, Br.	5058	5098			

Tubed & Shut in 1-28-42
Perf. Top 5248 Bot. 5254
D.M.

Producing Sand Record:
Orisk. Sand, from 5243 to 5255
Init, Prod, 16,104 M.C.F. Gas