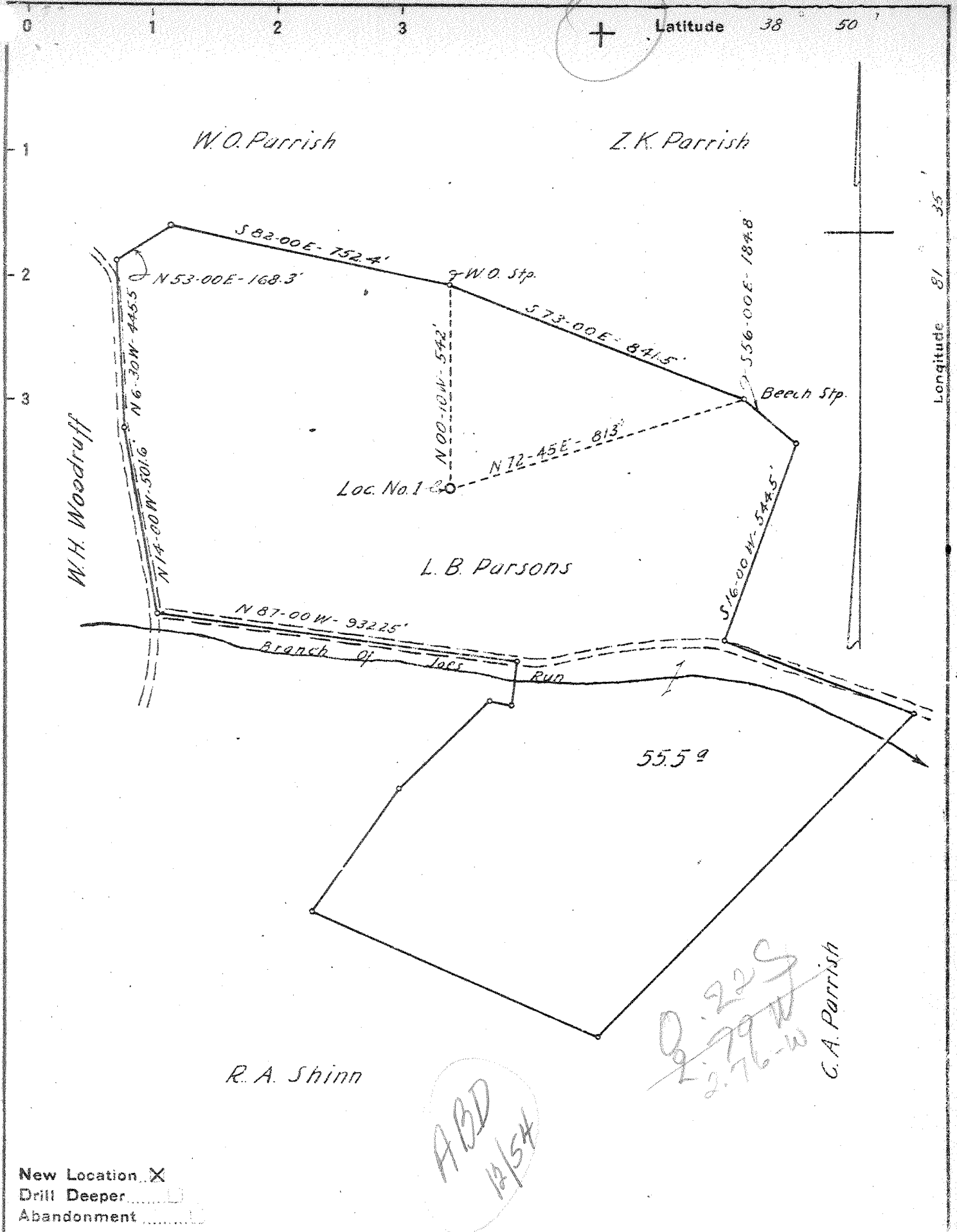


M



New Location X
 Drill Deeper
 Abandonment

ABD
12/54

0.225
2.79 W
2.76-W
C.A. Parrish

Company United Carbon Company
 Address Charleston, W. Va.
 Farm L. B. Parsons
 Tract Acres 55.5 Lease No. 3137
 Well (Farm) No. 1 Serial No. 974
 Elevation (Spirit Level) 914.5
 Quadrangle Ripley SC
 County Jackson District Ripley
 Engineer E. W. Withrow
 Engineer's Registration No. _____
 File No. _____ Drawing No. _____
 Date 9-10-41 Scale 1"=330'

STATE OF WEST VIRGINIA
 DEPARTMENT OF MINES
 OIL AND GAS DIVISION
 CHARLESTON

WELL LOCATION MAP
 FILE NO. JAC-206

+ Denotes location of well on United States Topographic Maps, scale 1 to 62,500, latitude and longitude lines being represented by border lines as shown.
 - Denotes one inch spaces on border line of original tracing.

6-4-192



WEST VIRGINIA DEPARTMENT OF MINES
OIL & GAS DIVISION
W E L L R E C O R D

Permit No. Jac-206		Gas Well
Company	United Carbon Co.	CASING & TUBING
Address	United Carbon Bldg., Chas., W. Va.	13 3/8 651 Pulled
Farm	L.B. Parsons Acres 55.5	10 1/2 1130 "
Location	Joe's Run of Mill Creek	8-5/8 2101 2101
Well No	1-974 Elev. 811.5	7" 5005 5005
District	Ripley Jackson County	3 3/8 5099
Surface	L.B. Parsons, Ripley, W. Va.	
Mineral	" "	
Commenced	Dec. 31, 1942	Casing cemented:
Completed	April 29, 1942	8-5/8" 680' - 3-11-42
Flow	42/10ths W in 7" O.D. 22#	7" 215' 4-22-42
Volume	10,314,000 C.F.	
Rock Pressure	1750 lbs. 24 hrs.	
Fresh Water	585' ~ 7 Blr. pr. hr.	
Salt Water	1455' ~ Hole Full	

Conductor	0	15	
Sand	15	30	
Red Rock	30	110	
Slate	110	250	
Sand	250	335	
Slate & Shells	335	560	
Sand	560	615	
Red Rock	615	630	
Slate	630	755	
Red Rock	755	815	
Slate	815	955	
Sand	955	965	
Slate & Shells	965	1285	
Sand	1285	1335	
Slate	1335	1350	
- Salt Sand	1350	1500	
Slate & Shells	1500	1760	
- Maxon Sand	1760	1908	
- Big Lime	1908	1973	
- Injun Sand	1973	2000	
Slate & Shell	2000	2015	
- Squaw Sand	2015	2080	
Lime	2080	2125	
Slate & Shell	2125	2445	
- Brown Shale	2445	2460	
- Berea Shells	2460	2472	Show gas 2462'
Slate & Shells	2472	3988	
Brown Shale	3988	4277	
Slate	4277	4620	
Brown Shale	4620	4930	
Black Shale - MARCELLUS	4930	4990	
- Corniferous Lime	4990	5101	
- Oriskany Sand	5101	5105	
TOTAL DEPTH		5105	

AMS