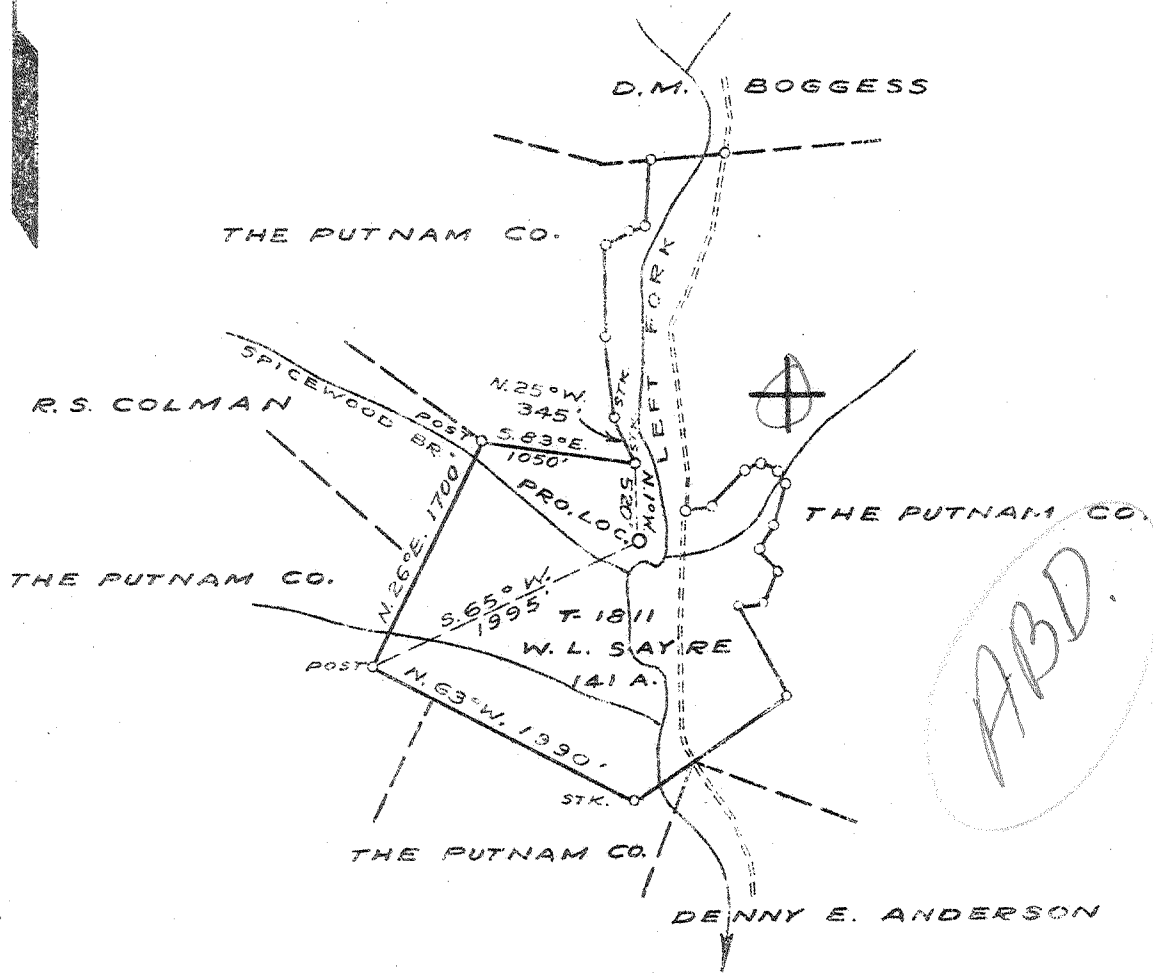


Latitude 38 40'

Longitude 81 35'



3.13-W
 3-2 W
 5-5 W
 5.46-3

New Location X
 Drill Deeper
 Abandonment

LOCATION IS 1.6 MILES NORTH OF LOOP

Company COLUMBIAN CARBON CO.
 Address BOX 1240 - CHARLESTON - W.VA.
 Farm W. L. SAYRE
 Tract _____ Acres 141 Lease No. 7-1811
 Well (Farm) No. ONE Serial No. _____
 Elevation (Spirit Level) 641.1
 Quadrangle KENNA SW C-5-
 County JACKSON District RIPLEY
 Engineer J. Noelle
 Engineer's Registration No. 772
 File No. _____ Drawing No. _____
 Date JUNE 12, 1941 Scale 1" = 1320'

STATE OF WEST VIRGINIA
 DEPARTMENT OF MINES
 OIL AND GAS DIVISION
 CHARLESTON

WELL LOCATION MAP
 FILE NO. JAC-169

+ Denotes location of well on United States Topographic Maps, scale 1 to 62,500, latitude and longitude lines being represented by border lines as shown.

- Denotes one inch spaces on border line of original tracing.

WEST VIRGINIA DEPARTMENT OF MINES
OIL & GAS DIVISION
W E L L R E C O R D

Permit No	Jac-169	Gas Well		
Company	Columbian Carbon Co	Casing & Tubing		
Address	Box 1240, Charleston, W.Va.	16	46'6"	46'6"
Farm	W.L.Sayre Acres 141	13 3/8	293'10"	Pulled
Location	Spicewood Branch	10 1/2	745'5"	"
Well No	1 (GW-603) Elev. 643.7 DF	8 5/8	1860'2"	1860'2"
District	Ripley Jackson County	7	4869'1"	4869'1"
Surface	W.L. Sayre, R. # 1, Kenna, W.Va.	2 3/8	5035'4"	5035'4"
Mineral	Same	Liner		
Commenced	7-26-41	3 1/2	92'8"	92'8"
Completed	10-13-41			
Shot	10-13-41	Depth 4929 DLM		
		4969 DLM		

Volume	421 M C F
Rock Pressure	740 lbs 9 days
Fresh Water	35' - 4-15" Blrs. pr hr; 40' Hole Full
	240' Hole Full; 675' 1 1/2"-12 1/2" Blrs. pr. hr.
Salt Water	1320' 2-10" Blrs. pr hr.; 1370-80
	hole full, Rises to 200' top hole

Cellar	0	12	Slate & Shells	1858	2210
Quicksand	12	21	Brown Shale	2210	2230
Gravel	21	40	Sand <i>Beaver</i>	2230	2247 <i>Beaver</i>
Blue Shell	40	42	Shells	2247	2278
Red Rock	42	45	Slate & Shells	2278	3710
Sand	45	70	Brown Shale	3710	3760
Blue Slate	70	155	Slate & Shells	3760	3800
Lime	155	170	Brown Shale	3800	3850
Red Rock	170	175	Slate & Shells	3850	3870
Slate	175	215	Brown Shale	3870	4035
Sand	215	245	Slate	4035	4460
Slate	245	253	Brown Shale	4460	4821 SLM
Sand	253	268	Corniferous Lime <i>43</i>	4821 SLM	4924 SLM
Light Slate	268	320	Oriskany Sand	4924 SLM	4976
Sand	320	330	Lime	4976	4988
Red Rock	330	335	Oriskany Sand	4988	5010
Slate	335	420	Lime	5010	5022 SLM
Red Rock	420	435	TOTAL DEPTH		5022 SLM
Slate	435	485			
Red Rock	485	495	Pay: 4929-48		
Slate	495	537	Gas 2230-33 Smell		
Red Rock	537	565			
Sand	565	579	CEMENT RECORD:		
Slate	579	644	8-1-41	Set 1 3/8" casing down	
Sand	644	702		in 30 pails of red clay.	
Slate	702	712	8-6-41	Aquagelled 10 1/2" casing.	
Sand	712	785		Ran 18 sacks Aquagel and	
Slate	785	885		50# Fibrotex.	
Sand	885	935	8-26-41	Cemented 8 5/8" casing.	
Slate	935	985		Ran 85 sacks cement	
Sand	985	1005		and 1 sack Aquagel.	
Slate	1005	1035		10' cement in pipe.	
Sand	1035	1065	10-2-41	Cemented 7" casing. Ran	
Slate	1065	1125		10 sacks Alpha cement in	
Sand	1125	1131		dump bailer. 34' solid	
Slate	1131	1195		cement in pipe.	
Sand	1195	1240			
Slate	1240	1246			
Lime	1246	1271			
Slate	1271	1285			
Salt Sand	1285	1320			
Water Sand	1320	1324			
Salt Sand	1324	1370			
Water Sand	1370	1380			
Salt Sand	1380	1545			
Slate	1545	1553			
Lime	1553	1590			
Sand	1590	1610			
Lime	1610	1614			
Slate	1614	1618			
Big Lime	1618	1768			
Big Injun Sand	1768	1785			
Slate	1785	1788			
Lime	1788	1815			
Slate	1815	1845			
Shell	1845	1858			