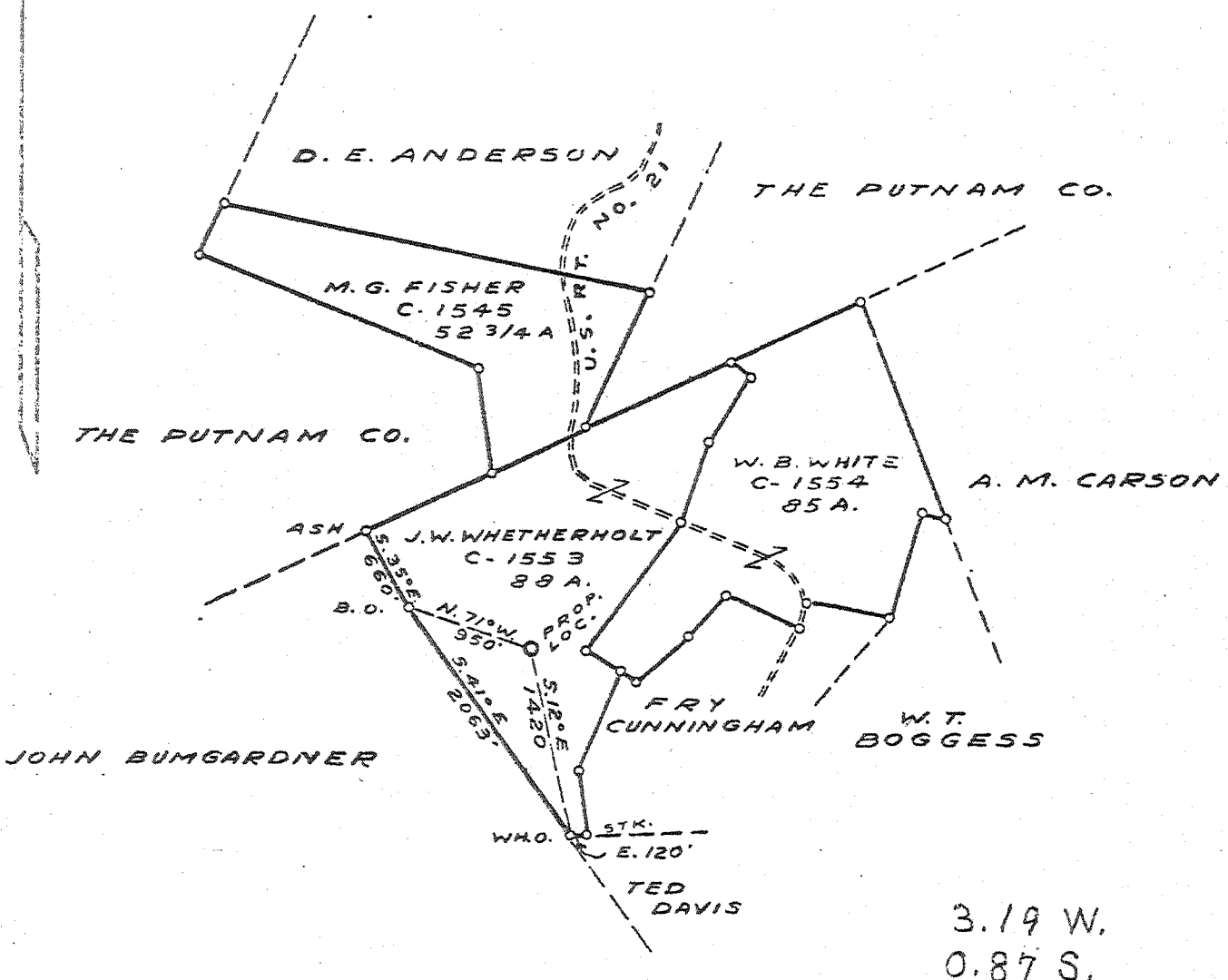


Latitude - 38 35'

Longitude 81 35'



New Location
 Drill Deeper
 Abandonment

LOC. 15 0.4 M. N.W. OF LOOP
 B. 18 P. 60 P.T. 23

Company COLUMBIAN CARBON CO.
 Address BOX 1240 - CHARLESTON - W. VA.
 Farm J. W. WHETHERHOLT ET AL
C-1545 - 1553
 Tract _____ Acres 225 3/4 Lease No. 1554
 Well (Farm) No. ONE Serial No. GW-458
 Elevation (Spirit Level) 951.5
 Quadrangle KENNA S.W.
 County JACKSON District RIPLEY
 Engineer J. McCall
 Engineer's Registration No. 772
 File No. _____ Drawing No. _____
 Date MAY 23, 1940 Scale 1" = 1320

STATE OF WEST VIRGINIA
 DEPARTMENT OF MINES
 OIL AND GAS DIVISION
 CHARLESTON

WELL LOCATION MAP
 FILE NO. JAC-86

+ Denotes location of well on United States Topographic Maps, scale 1 to 62,500, latitude and longitude lines being represented by border lines as shown.
 - Denotes one inch spaces on border line of original tracing.

6-6 192 DEEP WELL

WEST VIRGINIA DEPARTMENT OF MINES
OIL & GAS DIVISION
W E L L R E C O R D

Permit No. Jac-86
Kenna S. W. Quad.

Gas Well

		CASING & TUBING
Company	Columbian Carbon Company	13-3/8 40 40
Address	Box 1240, Charleston, W. Va.	10-3/4 906-4 pulled
Farm	J. W. Whetherholt ACRES 225-3/4	8-5/8 2164-1 2164-1
Location	Left Fork of Poca River	7 5203-7 5203-7
Well No.	1 (GW-458) ELEV. 956.4DF	2-3/8 5332-11 5332-11
District	Rinley - Jackson County	
Surface & Mineral	J. W. Whetherholt, et al	No packer
	Route 1, Kenna, W. Va.	
Commenced	June 25, 1940	Cemented - see below
Completed	Sept. 27, 1940	
Shot	Not shot	
Volume	4,927,000 c.f.	
Rock Pressure	1280 lbs. 12 days	
Salt Water	1620 - 2 - 10" blrs. per hr.	
	1635 - hole full	

Sand	0	47	
Slate	47	80	
Sand	80	120	
Red Rock	120	145	
Sand	145	155	
Red Rock	155	190	
Sand	190	207	
Red Rock	207	328	
Slate	328	364	
Sand	364	374	
Slate	374	420	
Red Rock	420	440	
Slate	440	485	
Sand	485	512	
Slate	512	525	
Red Rock	525	655	
Slate	655	726	
Sandy Lime	726	747	
Pink Rock	747	763	
Gritty Shells	763	794	
Red Rock	794	830	
Sandy Lime	830	855	
Black Slate	855	870	
Gritty Shell	870	914	
Sand	914	955	
Slate	955	975	
Sand	975	1030	
Slate	1030	1120	
Black Slate	1120	1140	
Sand	1140	1210	
Slate	1210	1243	
Sand	1243	1267	
Slate	1267	1474	
Sand	1474	1494	
Slate&Shells	1494	1560	
Salt Sand	1560	1837	
Slate	1837	1840	
Maxton Sand - 485' salt	1840	2010	
Sig Lime 3340	2010	2073	
Slate	2073	2075	
Injun Sand	2075	2130	
Slate	2130	2135	
Lime	2135	2155	
Slate & Shells	2155	2256	
White Slate	2256	2523	
Brown Shale	2523	2539	
Berea Sand	2539	2545	
Slate & Shells	2545	3760	
Shale	3760	3830	
Slate & Shells	3830	4185	

Brown Shale-441	4185	4315
Slate & Shells	4315	4495
White Slate	4495	4790
Brown Shale	4790	5015
White Slate	5015	5052
Black Shale - <i>Mackinac</i>	5052	5125 SLM
Corniferous Lime - <i>SLM</i>	5125	5232 SLM
Oriskany	SLM 5232	5286
Black Lime Break	5286	5300
Oriskany Sand	5300	5315
Lime	5315	5316
Total Depth	<i>485</i>	5316

Water 1620 - 2-10" blrs. hr.
" 1635 - hole full

Gas 4190 - show
PAY: 5237-51; 5254-56

CEMENT RECORD:

7/5/40 Aquageled 10-3/4 casing. Ran 12 sacks Aquagel mixed 4% solution. Plug stopped 8' off bottom. L.G. Miller Cemente - Halliburton Oil Well Cem. Co.

7/28/40 - Cemented 8-5/8 casing. Ran 90 sacks Alpha cement with 10' spacer on top. 1 Sack of Aquagel with cement. Ran 6 sacks of Aquagel ahead of cement. 24' of cement left in hole. F.M. Mills, Cemente, Halliburton Oil Well Cementing Co.

8/1/40 - Ran 10 sacks of cement to squeeze off water. Put 100# pressure on plug above cement. Pressure stood for 2 hours. Pumped bottom plug down to within 23' of bottom of pipe. Top plug was 61' off bottom when drilled out. F. M. Mills, Cemente, Halliburton Oil Well Cem. Co.

9/10/40 - Cemented 7" casing. Ran 12 Sacks Alpha cement in dump bailer. Cemented by Columbia Carbon Co. 40' of cement in hole.