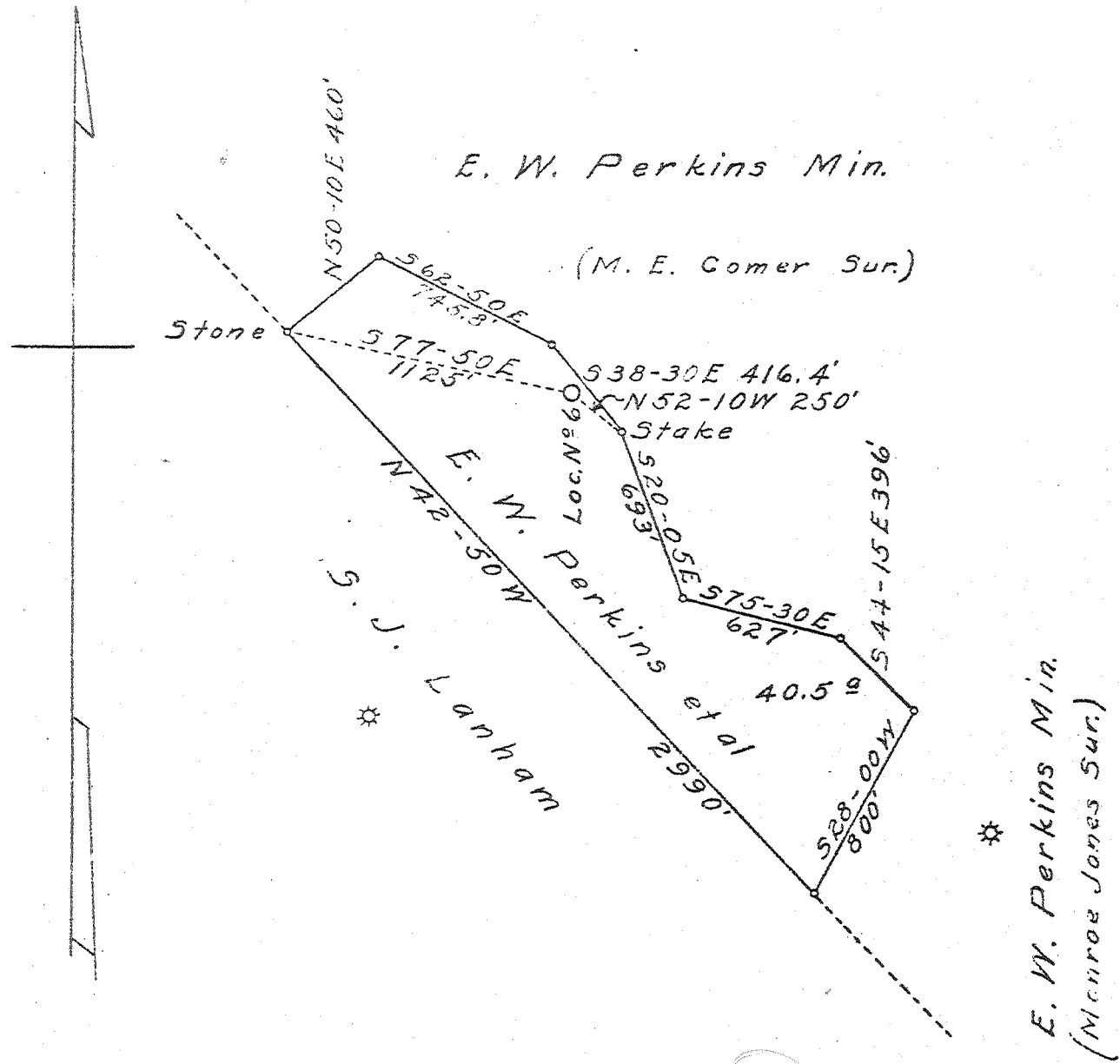


TOPO  
102.



ABD  
6/40

0.24 W  
0.10 S  
0.09 S

New Location  X  
 Drill Deeper   
 Abandonment

Company UNITED CARBON CO.  
 Address CHARLESTON, W.VA.  
 Farm ELIZ. W. PERKINS ET AL  
 Tract \_\_\_\_\_ Acres 40.5 Lease No. 2428  
 Well (Farm) No. 6 Serial No. 832  
 Elevation (Spirit Level) 1020.8  
 Quadrangle KENNA  
 County JACKSON District WASHINGTON  
 Engineer C. G. Withrow  
 Engineer's Registration No. \_\_\_\_\_  
 File No. \_\_\_\_\_ Drawing No. \_\_\_\_\_  
 Date MAY 16, 1940 Scale 1" = 660'

STATE OF WEST VIRGINIA  
 DEPARTMENT OF MINES  
 OIL AND GAS DIVISION  
 CHARLESTON

**WELL LOCATION MAP**  
 FILE NO. JAC-82

+ Denotes location of well on United States Topographic Maps, scale 1 to 62,500, latitude and longitude lines being represented by border lines as shown.

- Denotes one inch spaces on border line of original tracing.

6-6 192

WEST VIRGINIA DEPARTMENT OF MINES  
OIL & GAS DIVISION  
W E L L R E C O R D

Permit No. Jackson-82  
Kenna Quad.

Gas Well

CASING & TUBING

Company	United Carbon Co.	13	375	375
Address	901 Union Bldg., Charleston, W. Va.	10-3/4	940	940
Farm	E. W. Perkins ACRE 40.5	8-5/8	2143	2143
Location	Middle Fork Poca	7	5211	5211
Well No.	6 ELEV. 1020.8	2 tbg.	5340	5340
District	Washington - Jackson County			
Surface	Otmer Shamblin, Sissonville, W. Va.	CASING CEMENTED:		
Mineral	E. W. Perkins, c/o J. H. Nash	Size	Feet	Date
	710 Kanawha St., Charleston, W. Va.	8-5/8	306	7/28/40
Commenced	June 16, 1940	7 OD	260	9/12/40
Completed	Sept. 27, 1940			
Shot	Not Shot			
Open Flow	8/10ths Merc. in 7" OD 22#			
Volume	4,500,000 c.f.			
Rock Pressure	1240 lbs. 24 hrs.			
Salt Water	1600			

Sand	1	75	Shale - brown	4845	4952
Slate	75	80	Slate - white	4952	5030
Sand	80	105	Shale - brown	5030	5065
Slate&Shells	105	160	Slate - white	5065	5085
Rock - red	160	175	-Shale - black	5085	5193
Slate & Shells	175	225	-Corniferous Lime	5193	5316
Rock - red	225	250	-Oriskany Sand	5316	5346
Slate & Shells	250	300	Total Depth		5346
Rock - red	300	360			
Slate & Shells	360	515			
Rock - red	515	530			
Slate & Shells	530	545			
Rock - red	545	555			
Sand	555	570			
Slate & Shells	570	585			
Rock - red	585	780			
Slate & Shells	780	920			
Sand	920	990			
Slate & Shells	990	1060			
Sand	1060	1090			
Slate & Shells	1090	1200			
Sand	1200	1318			
Slate	1318	1330			
Lime	1330	1367			
Slate - black	1367	1500			
Lime	1500	1520			
Slate	1520	1530			
-Salt Sand	1530	1895	Gas 1540		
-Little Lime	1895	1920	Water 1600 - hole full		
-Pencil Cave	1920	1923			
-Big Lime	1923	2063			
-Injun Sand	2063	2093			
Slate&Shells	2093	2096			
Sand - Squaw	2096	2126			
Slate & Shells	2126	2165			
Lime	2165	2250			
Slate & Shells	2250	2526	Gas 2535 - show		
Lime	2526	2605			
Slate & Shells	2605	3750			
Shale - brown - 44	3750	3800			
Slate & Shells	3800	4200			
Shale - brown	4200	4375			
Slate & Shells	4375	4845			

475