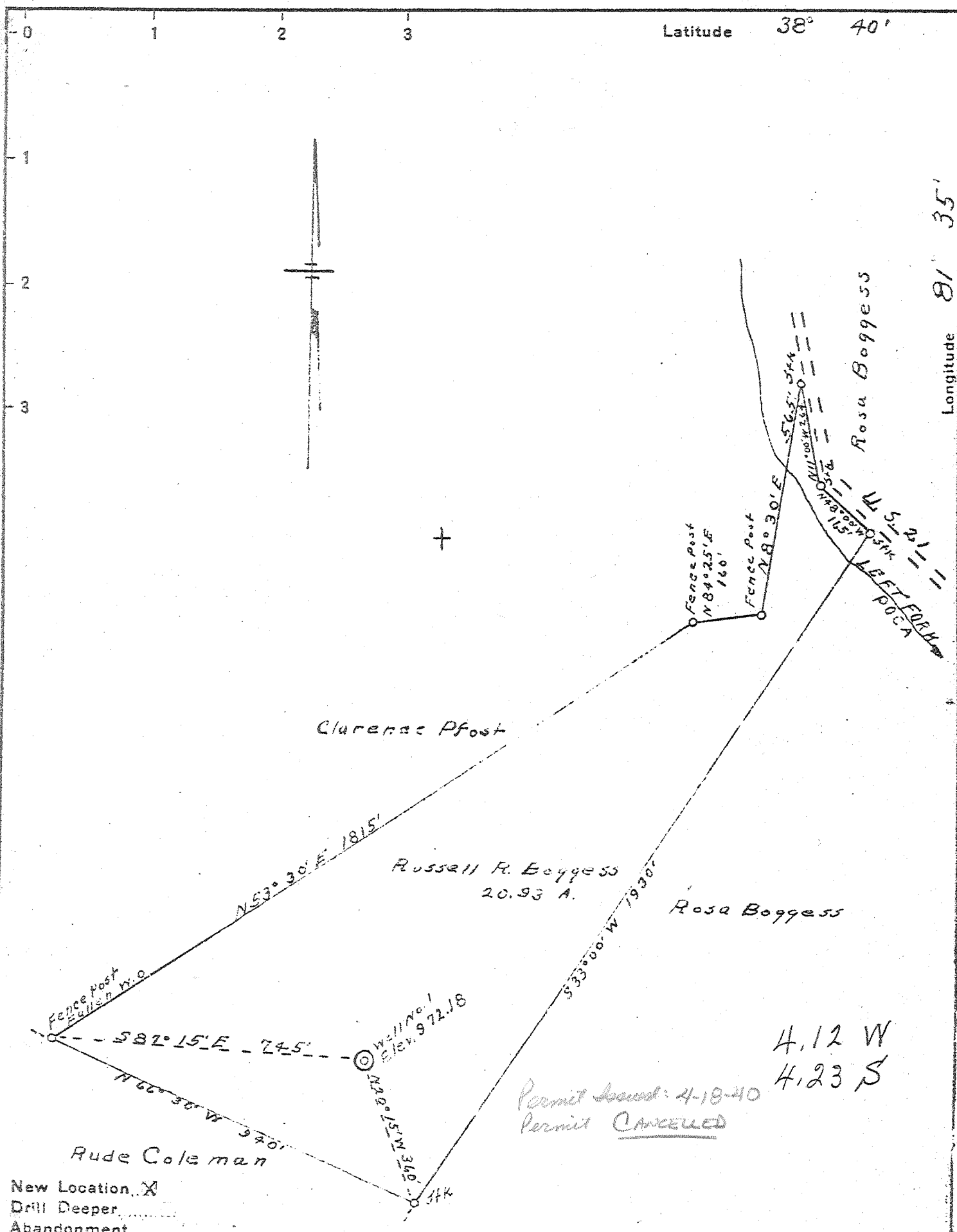


Latitude 38° 40'

Longitude 81° 35'



New Location  X  
 Drill Deeper.....  
 Abandonment.....

Company Everett Starcher ET AL.  
 Address Spencer, W. Va.  
 Farm Russell R. Boggess  
 Tract 20.93 Acres \_\_\_\_\_ Lease No. \_\_\_\_\_  
 Well (Farm) No. 1 Serial No. \_\_\_\_\_  
 Elevation (Spirit Level) 972.18  
 Quadrangle Kenna C  
 County Jackson District Ripley  
 Engineer L. F. Lyle  
 Engineer's Registration No. 804  
 File No. \_\_\_\_\_ Drawing No. \_\_\_\_\_  
 Date Apr. 3, 1940 Scale 1" = 500'

STATE OF WEST VIRGINIA  
 DEPARTMENT OF MINES  
 OIL AND GAS DIVISION  
 CHARLESTON

WELL LOCATION MAP  
 FILE NO. JAC-78  
CANCELLED

+ Denotes location of well on United States Topographic Maps, scale 1 to 62,500, latitude and longitude lines being represented by border lines as shown.

- Denotes one inch spaces on border line of original tracing.