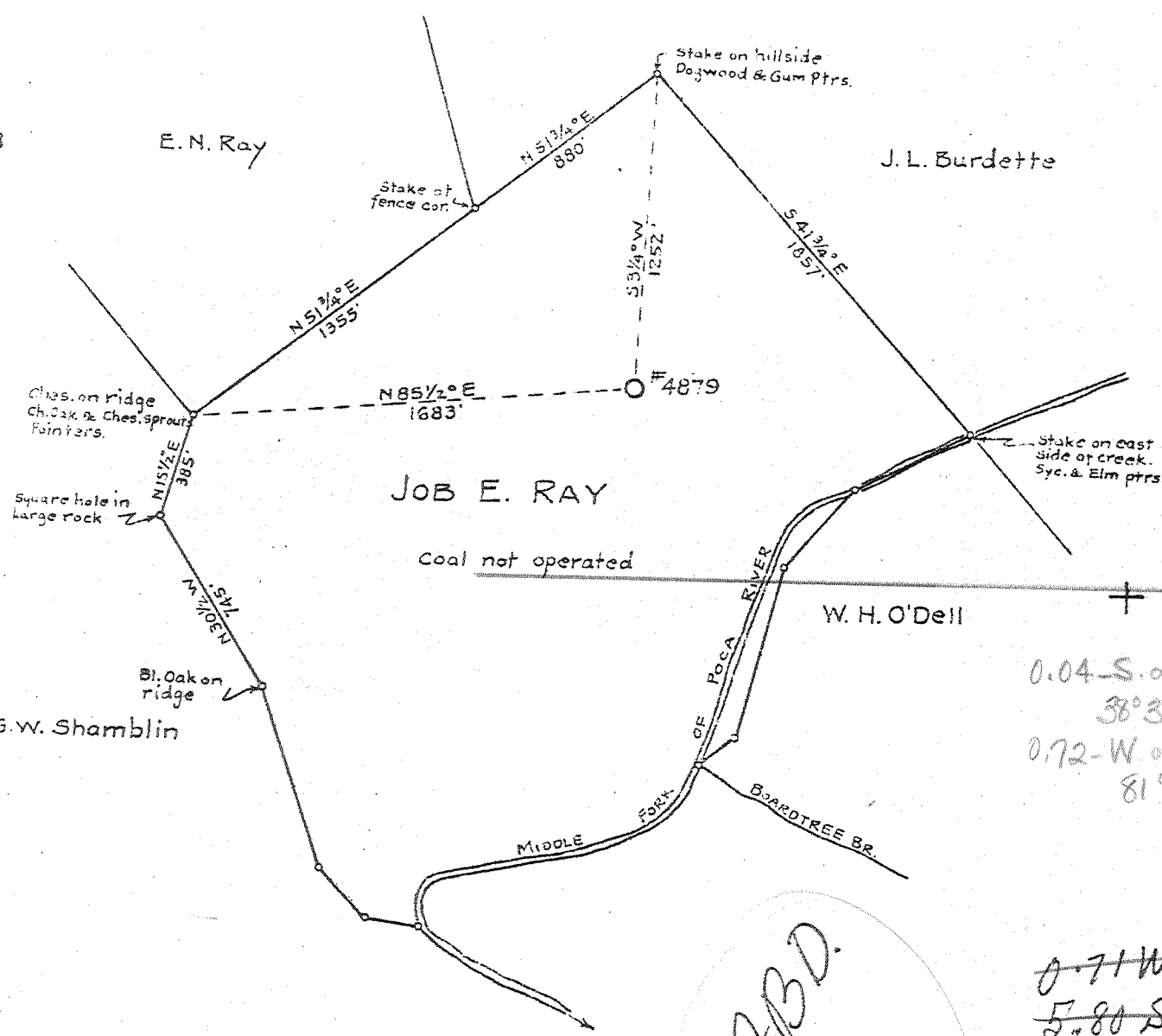


1
2
3



New Location X
 Drill Deeper
 Abandonment

Company	UNITED FUEL GAS CO.		
Address	CHARLESTON, W.VA.		
Farm	JOB E. RAY		
Tract	Acres	Lease No.	129 41423
Well (Farm) No.	1	Serial No.	4879
Elevation (Spirit Level)	928		
Quadrangle	KENNA		
County	JACKSON	District	WASHINGTON
Engineer			
Engineer's Registration No.	659		
File No.	62-75	Drawing No.	
Date	MARCH 4, 1940 Scale 1" = 660'		

STATE OF WEST VIRGINIA
 DEPARTMENT OF MINES
 OIL AND GAS DIVISION
 CHARLESTON

WELL LOCATION MAP
 FILE NO. JAC-74

+ Denotes location of well on United States Topographic Maps, scale 1 to 62,500, latitude and longitude lines being represented by border lines as shown.

- Denotes one inch spaces on border line of original tracing

Deep Well 66 192 ✓

WEST VIRGINIA DEPARTMENT OF MINES
OIL & GAS DIVISION
W E L L R E C O R D

Permit No. Jac-74
Kenna Quad.

Gas Well

Company United Fuel Gas Co.
Address Box 1256, Charleston, W. Va.
Farm Job E. Ray ACRES 129
Location Middle Fork of Poca River
Well No. 4879 ELEV. 928.0
District Washington - Jackson County
Surface & Mineral Job E. Ray, Romance, W. Va.
Commenced April 12, 1940
Completed Aug. 2, 1940
Volume Gas Well 4726 mcf - Vol XVI
Rock Pressure -
Salt Water 1540

CASING & TUBING		
10	871	871
8-1/4	2063	2063
7"	5174	5174
2"	5288	5288

Soil	0	12	
Red Rock	12	85	
Blue Mud	85	125	
Sand	125	200	
Black Slate	200	250	
Red Rock	250	300	
Slate	300	325	
Sand	325	525	
Red Rock	525	648	
Sand	648	668	
Red Rock	668	780	
Black Slate	780	855	
Sand	855	870	
Slate	870	876	
Sand	876	925	
Slate	925	980	
Sand	980	1000	
Slate	1000	1025	
Sand	1025	1060	
Slate&Shells	1060	1100	
Sand	1100	1114	
Slate	1114	1128	
Sand	1128	1225	
Slate	1225	1240	
Sand	1240	1270	
Slate & Shells	1270	1500	
Salt Sand	1500	1840	W 1540 - hole full
Little Lime	1840	1859	
Big Lime	1859	2010	
Big Injun	2010	2053	
Shell	2053	2064	
Slate&Shells	2064	3025	
Slate	3025	3525	
Slate&Shells	3525	4120	
Brown Shale	4120	4270	
White Slate	4270	4720	
Brown Shale	4720	5099	
Corniferous Lime <i>Ab3</i>	5099	5221	
7"OD 22# Steel Casing on Steel Shoe at 5114 - Cemented in by Halliburton			
Oriskany Sand	5221		Gas 5241-5248
Total Depth		5263	

475