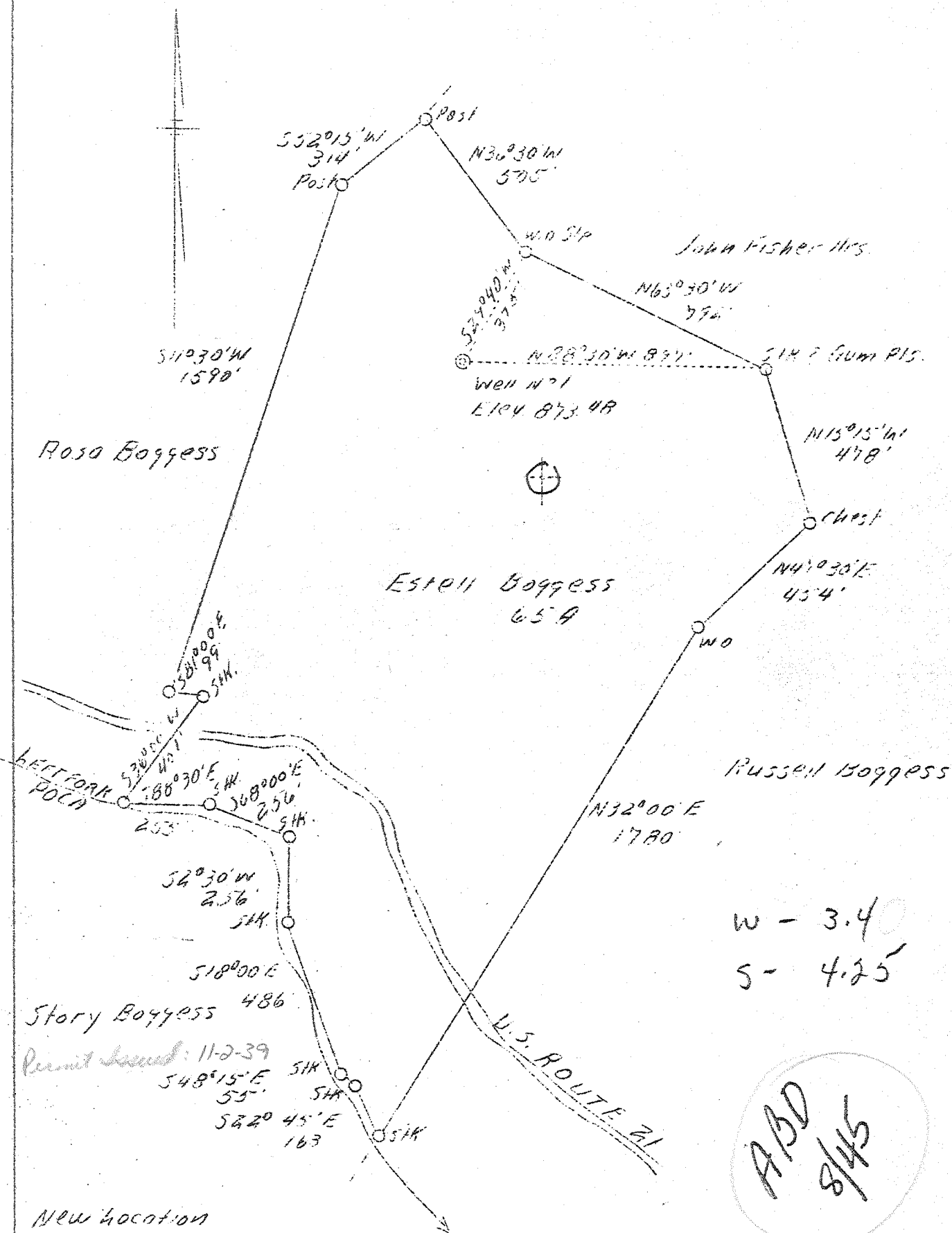


LATITUDE 38° 40'

LONGITUDE 81° 35'



Company Everett Starcher, et al
 Address Spencer, W. Va.
 Farm Estell Boggess
 Acres 65
 Well (Farm) No. 1
 Elevation (SL) 873.48 772 7080
 Quadrangle Konna
 County Jackson
 District Ripley
 Engineer L. F. Dye
 Eng. Reg. No. 804
 Date Sept. 16, 1939
 Scale 1" = 400'

STATE OF WEST VIRGINIA
 Department of Mines
 OIL & GAS DIVISION
 Charleston

WELL LOCATION MAP

File No. 106-59

x Denotes location of well on U. S. Topographic Maps, scale 1 to 62,500, latitude and longitude lines being represented by border lines as shown.

- Denotes one inch spaces on border line of original tracing.

6-6-192

WEST VIRGINIA DEPARTMENT OF MINES
OIL & GAS DIVISION
W E L L R E C O R D

Permit No. Jac-59
Kenna Quad.

Gas Well

CASING & TUBING

Company	Everett Starcher, et al	13	29½
Address	Spencer, W. Va.	16	724
Farm	Estel Boggess ACRE 65	8-1/4	1977 1977
Location	Duddens Fork	5-3/16	4982 4982
Well No.	1 ELEV. 873.48		
District	Ripley - Jackson County		
Surface & Mineral	Estel Boggess, Kenna, W. Va.		
Commenced	Oct. 1, 1939		
Completed	Jan. 13, 1940		
Shot	1/9/40 - Depth 5110		
Open Flow	20/10ths Mor. in 5-1/2"		
Volume	4,917,000 c.f.		
Rock Pressure	1850 lbs. - hrs.		
Salt Water	1456		

Red Rock	158	184	Slate&Shells	4200	4345
White Slate	158	184	Brown Shale	4345	4360
Red Rock	184	240	Slate&Shells	4360	4644
White Slate	240	292	Brown Shale	4644	4890
Red Rock	292	311	Black Shale - <i>Manellus</i>	4890	4960
White Slate	311	370	Corniferous Lime - <i>48</i>	4960	5073
Sand	370	408	Oriskany Sand	5073	5143 <i>quartz</i>
Red Rock	408	472	Lime - <i>held</i>	5143	5152 T.D.
Blue Lime	472	494			
Red Rock	494	567			
White Slate	567	586			
Red Rock	586	602			
White Slate	602	624			
Red Rock	624	644			
Sand	644	682			
Pink Rock	682	706			
White Slate	706	722			
Sand	722	737			
Black Slate	737	785			
Sand	785	892			
Black Slate	892	964			
Sand	964	1060			
Black Slate	1060	1114			
Sand	1114	1200			
Black Slate	1200	1358			
Lime	1358	1396			
Sand	1396	1405			
Black Slate	1405	1413			
Salt Sand	1413	1723			
Black Slate	1723	1778			
Maxon Sand	1778	1806			
Black Slate - <i>plave?</i>	1806	1808			
Big Lime	1808	1904			
Injun Sand	1904	1940			
White Slate	1940	1944			
Sand - <i>Squaw?</i>	1944	1959			
Black Slate	1959	1975			
Gritty Lime	1975	1979			
Slate&Shells	1979	2370			
Brown Shale	2370	2383			
Berea Grit	2383	2404			
Slate&Shells	2404	3600			
Brown Shale - <i>44</i>	3600	3663			
Slate&Shells	3663	3893			
Brown Shale	3893	3934			
Slate&Shells	3934	3978			
Brown Shale	3978	4200			

Shot from 5076 to 5110 with 100 qts. with 35 feet gravel on top and did not blow out filled with water and cleaned out satisfactorily.

485