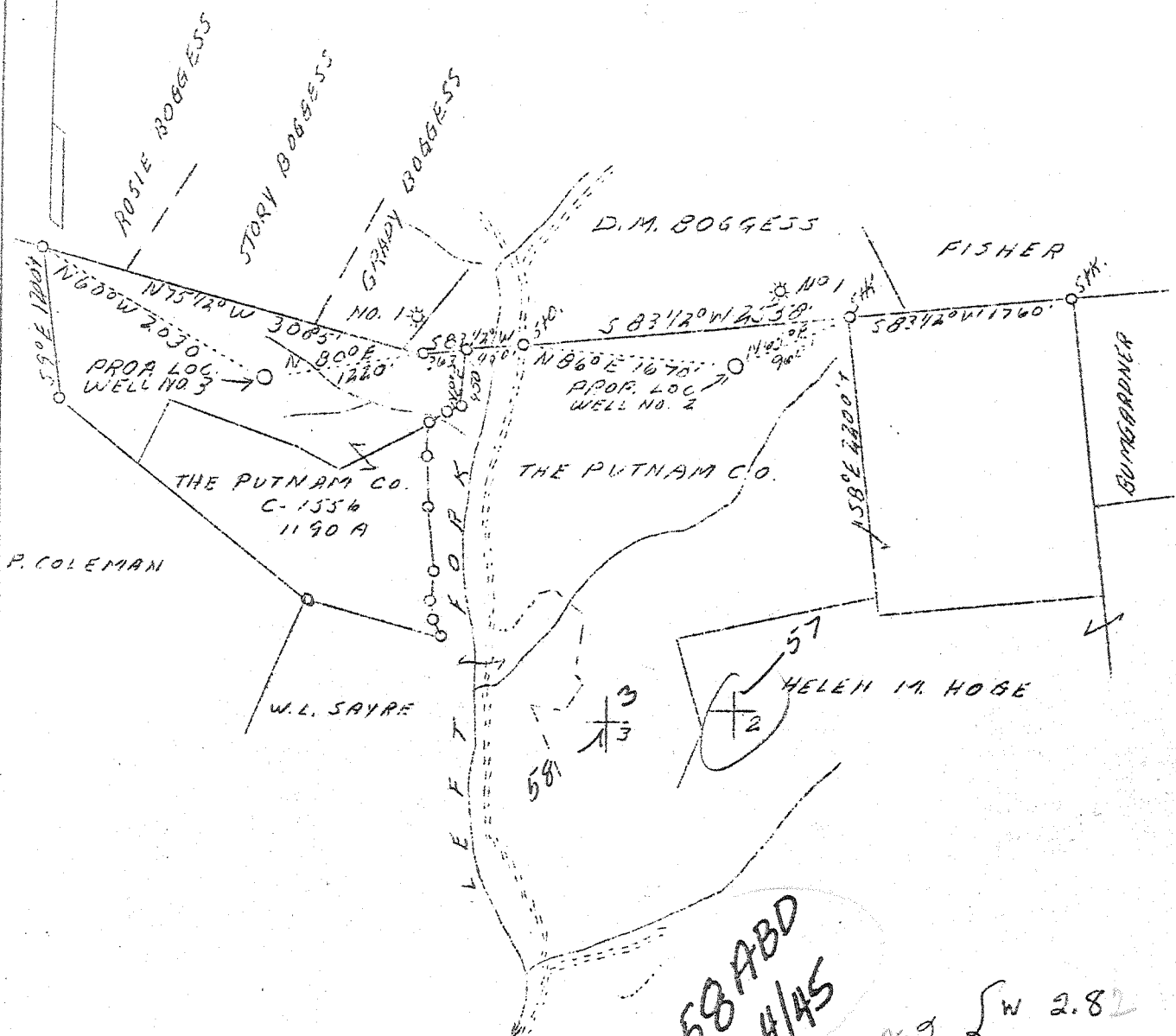


LATITUDE 38°40'

LONGITUDE 81°35'



Permit Serial: 95839
(9583)

57 - abandoned
May 50

57-2 { W 2.82
S 5.07
4.98-5

57-3 { W 3.58
S 5.07
3.57-W

Sheet # 3
No. 2 - 1.2 MILES S.E. OF GOLDTOWN
No. 3 - 0.8 " SOUTH "

MAP LOCATION

Company Columbian Carbon Co.
 Address B-1240, Charleston, W.Va.
 Farm The Putnam Co.
 Acres 1190
 Lease No. C-1556
 Well (Farm) No. 2 and 3
 Serial No. G.W.-442 G.W.-
 Elevation (SL) #2-1020.8 - #3-895.5
 Quadrangle Kenna S. W. C
 County Jackson
 District Ripley
 Engineer James N. Sell
 Eng. Reg. No. 772
 Date Sept. 13, 1939
 Scale 1" = 1320'

STATE OF WEST VIRGINIA
 Department of Mines
 OIL & GAS DIVISION
 Charleston

WELL LOCATION MAP

File No. Jac-57-58

x Denotes location of well on U. S. Topographic Maps, scale 1 to 62,500, latitude and longitude lines being represented by border lines as shown.

- Denotes one inch spaces on border line of original tracing.

66-192 ✓ Deep well

WEST VIRGINIA DEPARTMENT OF MINES
OIL & GAS DIVISION
W E L L R E C O R D

Gas Well

Permit No. Jac-57
Kenca Quad.

CASING & TUBING

Company	Columbian Carbon Co.	14	40-8	40-8
Address	Box 1240, Charleston, W. Va.	10-3/4	977-11	977-11
Farm	The Putnam Co. ACRES 1190	8-5/8	2265-11	2265-11
Location	Left Fork of Pocatalico River	7	5264-3	5264-3
Well No.	2 (GW-442) ELEV. 1025.8 DF	2-3/8	5348-8	5348-8
District	Ripley - Jackson County			
Surface	R. L. Fisher, Rt. 1, Ripley, W. Va.		No packer	
Mineral	Godfrey L. Cabot, Inc., et al		CEMENT RECORD: 1/1/40 Cemented	
Address	Charleston, W. Va.		8-5/8 csg. Ran 132 sacks Alpha	
Commenced	11/29/39 - completed 2/25/40		cement - 6 sacks Aquagel ahead	
Shot	2/26/40 - Depth 5323-5362 SLM		of cement. 14 1/2' cement in hole.	
Volume	7,117 M.C.F.		Dallas Holley, Cementer, Halli-	
Rock Pressure	1585 lbs. 2 days		burton Oil Well Cementing Co.	
Fresh Water	615-630 1/2-13" blr. hr.		1/8/40 Recemented 8-5/8" csg.	
	673-686 1/2-13" blr. hr.		squeezed 10 sacks cement behind	
Salt Water	1292-1302 3-10" blr. hr.		8". 4' cement in pipe, Dick Allen	
	1375-1380 6-10 blr. hr.		Cementer, Halliburton Oil Cem. Co.	
	1760 - hole full		2/9/40 cement 7" csg. Ran 25 sacks	
			Alpha C. 10' spacer & plug. 80'	
			cement in Hole, L. C. Miller, Contr.	

Red Rock	0	30	Slate&Shells	1407	1444
White Slate	30	75	Sand	1444	1467
Black Slate	75	90	Slate&Shells	1467	1526
White Slate	90	105	Sand	1526	1535
Lime	105	110	Slate	1535	1551
White Slate	110	130	Lime Shells	1551	1630
Sand	130	185	Slate&Shells	1630	1676
White Slate	185	202	—Slat Sand	1676	1812 HFW 1760
Red Rock	202	254	Slate	1812	1814
Blue Slate	254	260	—Salt Sand	1814	1924
Red Rock	260	315	Black Slate	1924	1933
Lime	315	325	—Maxton Sand	1933	1989
Red Rock	325	380	—Little Lime	1989	2012
Lime	380	390	—Pencil Cave	2012	2014DLM
Red Rock	390	415	—Big Lime	DLM 2014	2176
Slate	415	435	—Big Injun	2176	2186
Red Rock	435	480	Blue Slate	2186	2190
Slate	480	485	Slate&Shell	2190	2235
Lime	485	610	Lime Shell	2235	2329
Sand	610	630	FW 615-630—Weir Shells	2329	2356
Red Rock	630	650	Black Slate	2356	2460
Slate	650	673	FW 673-686 White Slate	2460	2475
Sand	673	686	Black Slate	2475	2620
Red Rock	686	689	—Brown Shale	2620	2634 Gas 2634 &
Lime	689	710	—Berea Grit	2634	2645 45 show
Red Rock	710	789	Lime	2645	2661
Slate&Lime	789	801	Slate&Shells	2661	2714
Red Rock	801	812	Black Slate	2714	2761
Lime Shells	812	853	Slate&Shells	2761	3850
Red Rock	853	875	Brown Shale—441	3850	3908
Slate	875	885	Lime Shells	3908	3960
Lime	885	912	Slate&Shells	3960	4337
Red Rock	912	942	Brown Shale	4337	4488
Lime	942	960	White Slate	4488	4935
Slate&Shells	960	995	Brown Shale	4935	5213SLM
Sand	995	1000	—Corniferous Lime ⁴⁶³	*5213S	5230SLM
Slate	1000	1054	Oriskany Sand	*5320	5370
Lime	1054	1060	Lime	*5370	5380
Sand	1060	1135	Oriskany Sand	*5380	5403
Slate	1135	1178	—Lime—held	*5403	5433SLM
Slate&Shells	1178	1238	Total Depth	5433SLM	
Sand	1238	1258			
Black Slate	1258	1264			
Slate&Shells	1264	1280			
Sand	1280	1317	PAYS: 5324-30; 5337-47;		
Lime	1317	1360	5349-52; 5356-60		
Slate	1360	1370			
Sand	1370	1380			
Lime Shells	1380	1407			

*Also per sample examination

445