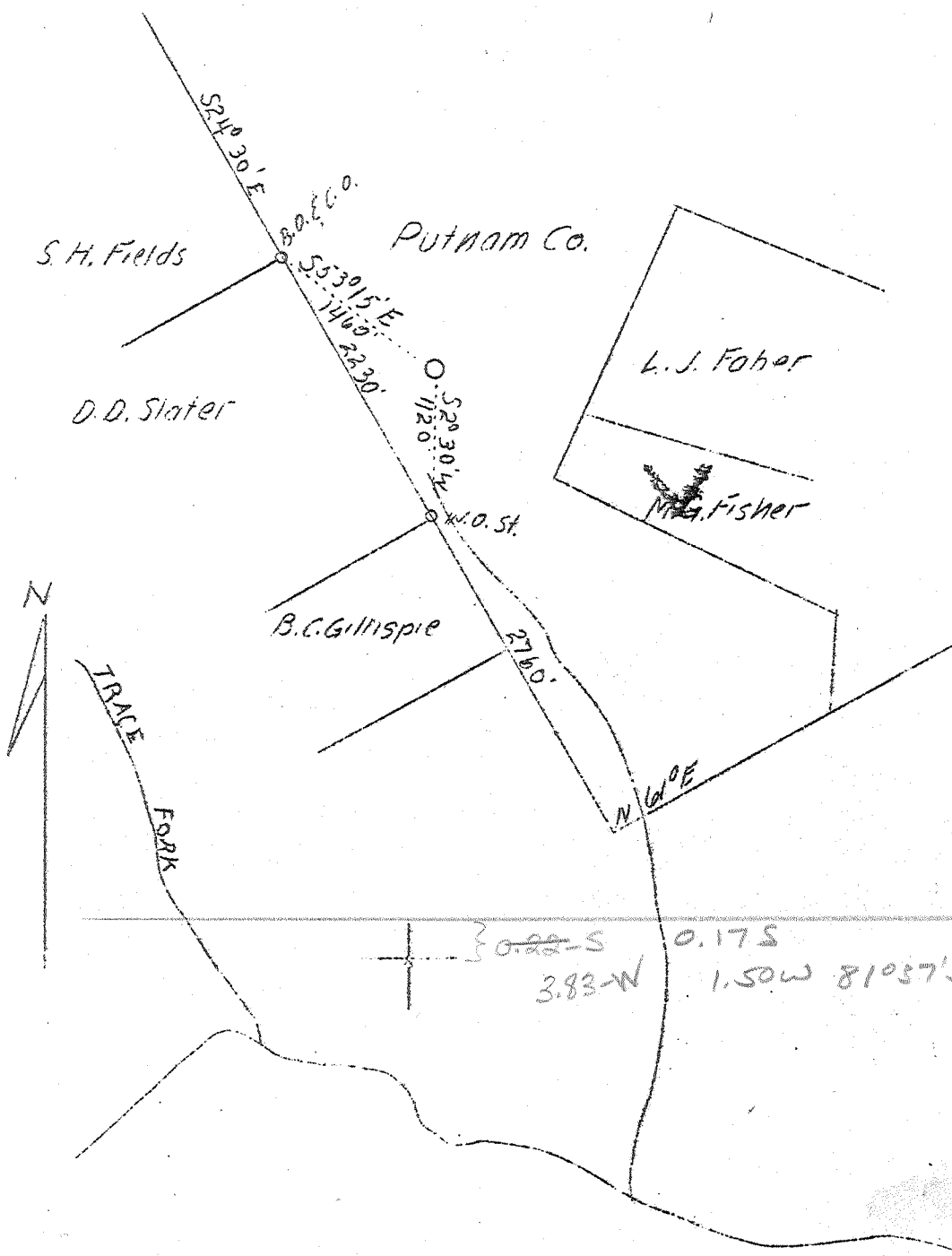


LATITUDE 38°40'

LONGITUDE 81°35'



Permit No. 8-29-39

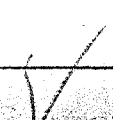
Abandoned
Feb. 49

~~W-3.82
S-5.96~~

Well Location

Company	Godfrey L. Cabot, Inc.,	STATE OF WEST VIRGINIA Department of Mines OIL & GAS DIVISION Charleston
Address	600 Union Bldg., Charleston, W. Va.	
Farm	Putnam Company	WELL LOCATION MAP File No. <u>100-54</u> x Denotes location of well on U. S. Topographic Maps, scale 1 to 62,500, latitude and longitude lines being represented by border lines as shown. - Denotes one inch spaces on border line of original tracing.
Well (Farm) No.	3	
Serial No.	933	
Elevation (SL)	904	
Quadrangle C	Kenna	
County	Jackson	
District	Ripley	
Engineer	? Fitz Randolph	
Eng. Reg. No.	806	
Date	August 17, 1939	
Scale	1" = 1320'	

See wells 6-6 192



WEST VIRGINIA DEPARTMENT OF MINES
OIL & GAS DIVISION
W E L L R E C O R D

Permit No. Jrc-54
Kenna Quad.

Gas Well

Company Godfrey L. Cabot, Inc.,
Address Charleston, W. Va.
Farm The Putnam Company ACRES -
District Ripley - Jackson County
Surface & Mineral -
Commenced Oct. 30, 1939 - completed 3/12/40
Shot Not shot
Open Flow 14/10ths Merc. in 6-5/8 after
drilling at 5199
Volume 5,323,000 c.f.
Rock Pressure 1637 lbs. 18 hrs. - Oriskany
Salt Water 1555, 1705 & 2035
Well No. 3 - Serial 933 ELEV. 904

CASING & TUBING

13	700	700
10	2023	-
8	2013	-
7	5090	5090
2	5218	5218
10	- 15 bags Aquagel	
8	- 20 " "	
7	- Casing Shoe, 40 bags aquagel & 20 bags cement	

Red Rock	0	35
Slate	35	45
Red Rock	45	85
Sand	85	105
Slate	105	130
Red Rock	130	180
Shells	130	250
Red Rock	250	265
Slate & Shells	265	336
Red Rock	336	350
Lime	350	420
Sand	420	477
Slate	477	490
Red Rock	490	572
Sand	572	587
Shells	587	700
Sand	700	751
Red Rock	751	759
Lime Shell	759	763
Slate	763	780
Sand	780	830
Slate	830	940
Lime	940	960
Sand	960	1015
Slate&Shell	1015	1110
Sand	1110	1150
Slate	1150	1160
Sand	1160	1205
Slate	1205	1215
Lime	1215	1315
Slate&Shell	1315	1370
Sand	1370	1410
Slate	1410	1470
Sand	1470	1502
Lime	1502	1540
- Salt Sand	1540	1825 SW 1555
Slate	1825	1850 " 1705
- Marton Sand	1850	2000 " 2035
- Big Lime	2000	2045
- Injun Sand	2045	2090
Slate	2090	2093
- Hoir Shells	2093	2150
Slate & Shell	2150	2493
- Brown Shale	2493	2505
- Borea Sand	2505	2515
Slate	2515	2540
Lime Shells	2540	2650
Shale	2650	2740
Lime	2740	2870
Slate & Shell	2870	3710
✓ Brown Shale -441	3710	3730

Lime	3730	3790
Slate&Shell	3790	4100
Brown Shale	4100	4120
Slate&Shell	4120	4170
Brown Shale	4170	4260
Slate&Shell	4260	4305
White Slate	4305	4750
Brown Shale	4750	4990
White Slate	4990	5009
- Black Shale - <i>Maccellus</i>	5009	5068
- Corniferous Lime - <i>4123</i>	5068	5183
- Oriskany Sand	5183	5218
Total Depth		5218

475

GAUGES IN CRISKANY SAND:

3/5/40	120/10	7 in 2"	at 5184-35
3/7/40	20/10	7 in 2"	after blowing off at 5185
"	20/10	7 in 6-5/8	Drilling at 5189
"	28/10	7 in 6-5/8	Tools out " 5190
"	8/10	7 in 6-5/8	Tools out " 5191
"	5/10	7 in 6-5/8	" " " 5193
"	4/10	7 in 6-5/8	" " " 5194
"	30/10	7 in 6-5/8	Drilling " 5196
3/8/40	14/10	Merc.	" " " 5199
"	13/10	" " "	Tools out " 5204
3/9/40	11/10	" " "	" " " 5206
3/10/40	10/10	" " "	" " " 5210
3/11/40	9/10	" " "	" " " 5213
3/12/40	10/10	" " "	" " " 5218